

Maximum reliability. Minimum fuss.



# SikaTack Adhesive System

Fastener Systems

**Product Focus**



# Our Story

We design, manufacture and supply specialist fasteners and components for the walls and roofs of industrial, commercial and larger residential buildings.

## **Fixfast has provided quality products and reliable service for over 40 years.**

We have always focused on a very specific market, designing, manufacturing, and supplying fasteners and components for the walls and roofs of industrial, commercial and larger residential buildings.

We provide our customers with a broad range of products that have been specifically chosen to service them with the highest level of reliability.

Fixfast's collaborative approach and desire to help create successful buildings means that we have become well respected in the market, forging trustworthy relationships with major industry players.

## **First class service**

Our staff are trained to know all about the products they sell, so they can help you with useful advice and answer any technical queries you may have. We think you'll enjoy the experience of purchasing from Fixfast as our number one focus is to provide maximum reliability with minimum fuss.





# Production and Certification

## Manufacturing

Over the past 40 years, Fixfast has fine-tuned our product ranges to ensure each item serves its purpose in the best way possible.

Our team has built up the resources for both innovative and well-proven designs, with close monitoring systems ensuring reliable quality and efficiency through state-of-the-art manufacturing to unique specifications.

Our Facade Support Systems are carefully selected and manufactured according to our exact specifications, to ensure that customers receive the highest quality components.

## Quality Assurance

ISO Accredited.

Fixfast have ISO accreditations for 9001 for quality assurance, 14001 for environmental management, and BS OHSAS 18001 for occupational health and safety. We are very aware of the ever-increasing drive towards higher quality, best practice and better working conditions, as we do every possible to promote this.





# Technical Support

## **Trained and experienced technicians**

Every construction project, particularly on existing buildings, holds surprises. If you're unsure how the materials you're fixing into will respond to the stresses being put on them, we can carry out the necessary tests to put your mind at ease. Fixfast's technical support staff are highly trained, experienced at knowing what tests to carry out and how to read them. For example, where you're fixing into old materials, we can conduct pullout tests and provide you with a detailed report showing exactly how a given Fixfast product will perform in the circumstances.

## **Wind load calculations**

Wind can put considerable force on a structure and there are many things that can affect that force and how the installation handles it. Location, height, the size and shape of the building, whether the openings are large or small, the type of surrounding landscape and more.

Leaving façade fixing and support to chance is a big risk, and over specifying for safety can cost valuable money for the contractor or client.

Fortunately, there are UK specific European regulations which detail exactly how to arrive at a safe fixing pattern, but they are technically very complex.

The technical support team at Fixfast can carry out wind load calculations for projects using rainscreens and facades, providing results for the mechanical fixing of the support system, the rainscreen, or both. The calculation report is clear and comprehensive, showing fixing patterns for each component. All calculations are in accordance with Eurocode 1991-1-4 and use data from testing according to ETAG 006 and EN 16002:2010.



### Site visits

Fixfast are committed to exceptional onsite support. Whether it is offering advice, testing to ensure the correct products are used, or producing reports confirming these details, you can be sure that your requirement will be attended to quickly and efficiently. Our trained onsite support team is available to visit you at short notice, and will quickly produce a comprehensive report.



## SikaTack panel adhesive system

---

The SikaTack®-Panel System is an adhesive system for the economic, concealed fixing of ventilated façade panels. The system consists of the elastic adhesive SikaTack®-Panel, the double sided SikaTack®-Panel fixing tape and pre-treatment products. With the SikaTack®-Panel System, façade panels are invisibly attached to their normal substructures.

## Applications and features

---

### Applications

Concealed bonded fixing of ventilated façade panels for:

- Residential and commercial buildings
- New build and renovation projects
- Interior finishing works

### Features

- 1-part products, ready to use
- Economical for rapid fixing
- Uniform tension over the whole façade panel (no stress points)
- Resistant to weathering and ageing
- Vibration and movement absorbing fixing system
- Provides creative opportunities for façade design
- Good looking, easy to maintain façade surface
- Silicone free

## Tests / Approvals / Standards

---

Approval from “Deutsches Institut für Bautechnik” Berlin, Reg. No.: Z-10.8-408.

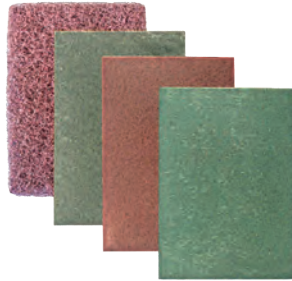
Note: Panels have to be pre-tested to confirm their suitability.

Our Technical Department can assist in this evaluation.



## System components

1. ST panel abrasive pads  
for abrasing the surface before applying primer



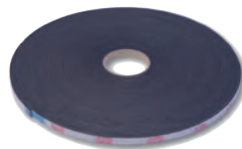
2. ST panel cleaner  
for cleaning the surface to ensure perfect adhesion



3. ST panel primer  
to coat the surface and provide a key to the panel adhesive and tape



4. ST panel tape  
First part of the two-part adhesive system



5. ST panel adhesive  
Available in 600ml sausages and is the second part of the adhesion system, applied in a triangular shaped bead.



For detailed application instructions, please contact Fixfast customer service.

## Sika cleaner & primer

PRODUCT DESCRIPTION		
Uses	Cleaning and bonding agents to optimise adhesion.	
PRODUCT DATA		
Form	Sika® Aktivator-205 (Sika® Cleaner-205)	SikaTack®-Panel Primer
Colour	Clear, colourless	Black
Packaging	1000ml 250ml	1000ml
STORAGE		
	Sika® Aktivator-205 (Sika® Cleaner-205)	SikaTack®-Panel Primer
Storage Conditions	From date of production if stored in undamaged original sealed containers, in dry conditions and protected from direct sunlight at temperatures between +10°C and 25°C.	
Shelf Life	12 months	9 months
TECHNICAL DATA		
	Sika® Aktivator-205 (Sika® Cleaner-205)	SikaTack®-Panel Primer
Chemical Base	Bonding agent in alcohol solution.	Solvent containing pigmented epoxy resin
Density	0.80 kg/l	1.00 kg/l
Flash Point	+12°C	-4°C
APPLICATION CONDITIONS / LIMITATIONS		
	Sika® Aktivator-205 (Sika® Cleaner-205)	SikaTack®-Panel Primer
Ambient Temperature	+5°C min. / +35°C max.	+5°C min. / +35°C max.

## SikaTack adhesive

PRODUCT DESCRIPTION	
Uses	1-part adhesive for the SikaTack®-Panel System.
PRODUCT DATA	
Colour	Ivory
Packaging	300 ml cartridges 600 ml sausages
STORAGE	
Storage Conditions / Shelf Life	9 months from date of production if stored properly in undamaged original sealed containers in dry conditions and protected from direct sunlight at temperatures between +10°C and +25°C.
TECHNICAL DATA	
Chemical Base	1-part polyurethane, moisture curing.
Density	1.18 kg/l (DIN 53 479)
Skinning- / Laying Time	20 min. (+23° C / 50r. h.)
Curing Rate	3 mm / 24h (+23°C / 50 r. h.)
Service Temperature	-40°C to +90°C
Building-Material Class	B2 DIN 4102 part 1
MECHANICAL / PHYSICAL PROPERTIES	
Ultimate Shear Strength	~ 2.00 Mpa - See Maximum Permissible Strengths on Page 6
Ultimate Tensile Strength	~ 2.50 Mpa – See Maximum Permissible Strengths on Page 6
APPLICATION CONDITIONS / LIMITATIONS	
Ambient Temperature	+5°C min. / +35°C max.



# SikaTack panel tape

PRODUCT DESCRIPTION		
Uses	A double sided self adhesive fixing tape used for the initial fixing of façade panels (until the adhesive has cured and also to ensure that the minimum thickness of the SikaTack®-Panel adhesive is 3 mm.	
PRODUCT DATA		
Colour	Anthracite	
Packaging	33 m per roll	
STORAGE		
Storage Conditions / Shelf Life	24 months from date of production if stored properly in undamaged original sealed containers in dry conditions and protected from direct sunlight at temperatures between +10°C and +25°C.	
TECHNICAL DATA		
Chemical Base	Closed cell polyethylene foam.	
Density	0.064 kg / l	
Thickness	12mm	
Dimension	3.3 mm (+ 0.2 mm)	
Service Temperature	-40°C to +70°C	
MECHANICAL / PHYSICAL PROPERTIES		
Compressive Strength	Deflection	Compressive Strength (ISO 844)
	10%	22 kPa
	25%	47 kPa
	50%	120 kPa
Shear Strength	> 150 hours (1 kg / 25 x 25 mm) (FTM 2)	
Tensile Strength	MD 25 N / 15 mm, CD 20 N / 15 mm (DIN 53 455)	
Elongation at Break	MD 250%, CD 150% (DIN 53 455)	
Peel Strength	> 23 N / 25 mm (180°C - 30 min.) on stainless steel (FTM 1)	
Important	Long-term strength is provided by the SikaTack-Panel adhesive. Do not include the mechanical values of the tape in the calculation of the long term strength required. The tape must be applied onto the full length of the substructure.	
APPLICATION CONDITIONS / LIMITATIONS		
Ambient Temperature	+10°C min. / +35°C max.	

## Application Details

	<b>Material</b>	<b>Application</b>	<b>Consumption</b>
CONSUMPTION / DOSAGE	SikaTack®-Panel Cartridge 300 ml Sausage 600 ml	Triangular bead 8 x 10mm	~ 44 ml / m, corresponds to 6.5 m / cartridge or 13 m / sausage
	Sika® Aktivator-205 (Sika® Cleaner-205) 250 ml bottle 1000 ml bottle	Width 50 mm	~ 3.5 ml / m, corresponds to ~ 71 m / 250 ml bottle to ~285 m / 1000 ml bottle
	SikaTack®-Panel Primer 1000 ml bottle	Width 50 mm	~ 8 ml / m, corresponds to ~125 m / 1000 ml bottle
	SikaTack®-Panel Fixing Tape, Roll 33 m		1 m / m
SUBSTRATE QUALITY	Clean and dry, homogeneous, even, free from oils and grease, dust and loose or friable particles. Paint, laitance and other poorly adhering particles must be removed. Standard construction rules must be observed.		
Substrate Temperature	For 5 hours after mounting, the temperature should not fall below the minimum temperature of +5°C.		
Ambient Temperature	+5°C min. / +35°C max.		
Material Temperature	The temperature of the building components to be bonded (cladding panels, sub structure etc.) must be at least 3°C higher than the dew point temperature of the air in order to avoid the formation of condensation on the surfaces.		
Substrate Humidity	Dry, wood moisture content < 14%.		
Relative Air Humidity	Max. 75%		

Whether you're at the feasibility design stage or through to final specification and tender, our comprehensive service and technical support is designed to help you.

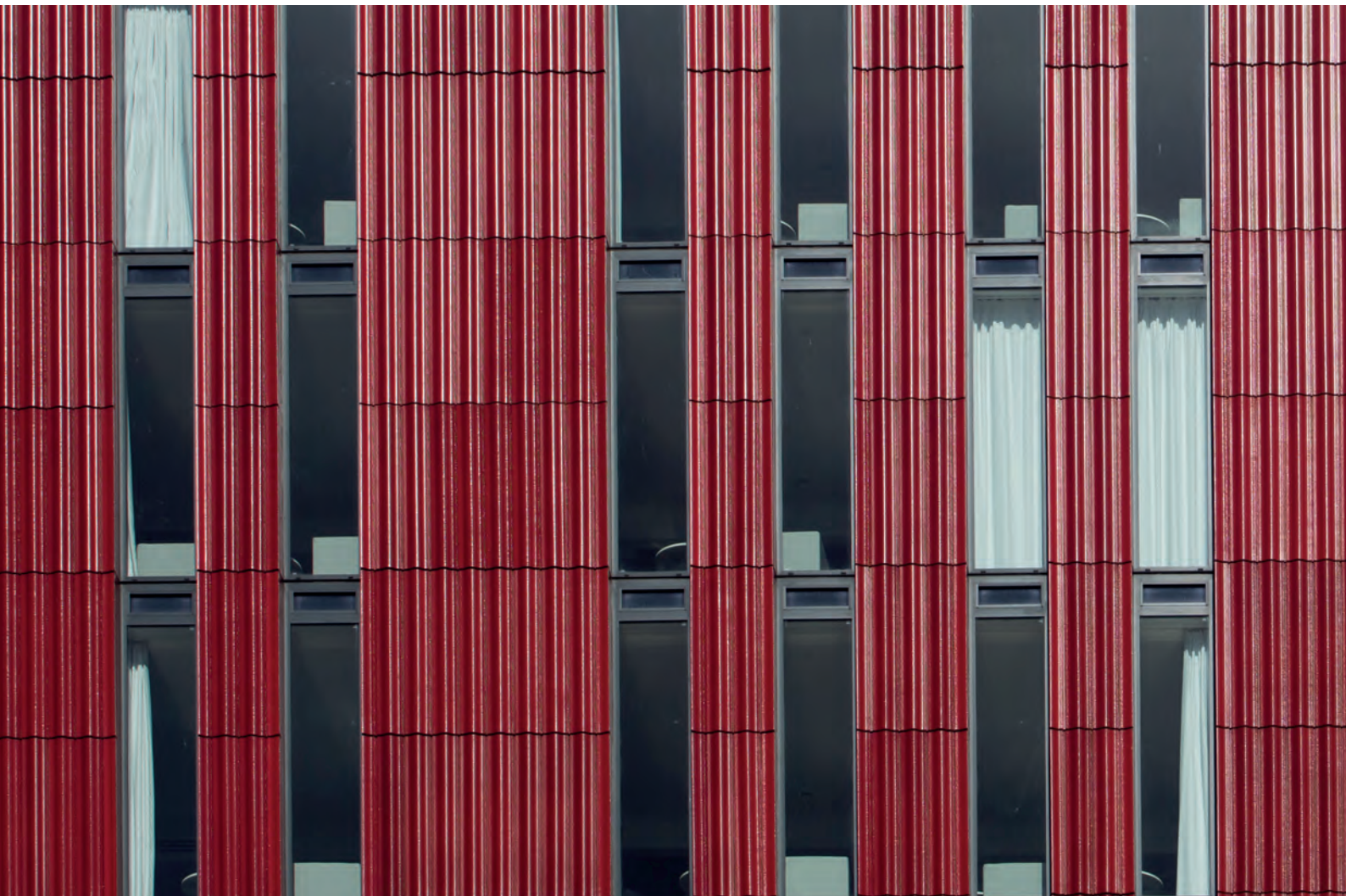
### **Engineering-led approach**

Each rainscreen support system is customised to your specific requirements. Based on the location and structure of your building, our in-house technical team will undertake substrate and wind load calculations to determine the exact support system you require. We can give you the technical datasheets and CAD files you need to be sure of delivering safe, secure and durable rainscreens.

We support architects and engineers with our specification team who will make life simple by writing specific NBS specifications and providing other relevant information for each project.

### **Simplified installation**

We optimise your support system to match with the outer skin of your rainscreen design, and make installation as straightforward as possible. We can provide fasteners in any colour to blend in or stand out, with low profile options available. The end result is a system configured specifically to your project and easily installed by your on-site team, so you can move on to the next job sooner.





You can contact us at any stage of your project. The earlier you involve our technical team, the more we can help.

### Get in touch

We will ask you to share a few important details of your proposed project with us, including:

- Building plans/elevations for the rainscreen
- Substrate material and thickness
- Your chosen face panels
- Your chosen insulation
- Your preferred bar profile for the substructure

Using the information you provide and our extensive test data, our expert team will undertake wind load and substrate calculations to determine the optimal rainscreen support system for your application. Where required, we will carry out on-site pull tests to confirm the structural suitability of your chosen system with the available substrate.

### Speak with us about your rainscreen project today:

By email: [sales@fixfast.com](mailto:sales@fixfast.com)

By telephone: 0800 304 7616





Merlin House  
Seven Mile Lane  
Borough Green  
Sevenoaks  
Kent  
TN15 8QY

**Enquiries**  
0800 304 7616  
**International**  
+44 (0) 1732 882387  
**Email**  
info@fixfast.com



Certificate number 10905  
ISO 9001, ISO 14001  
OHSAS 18001