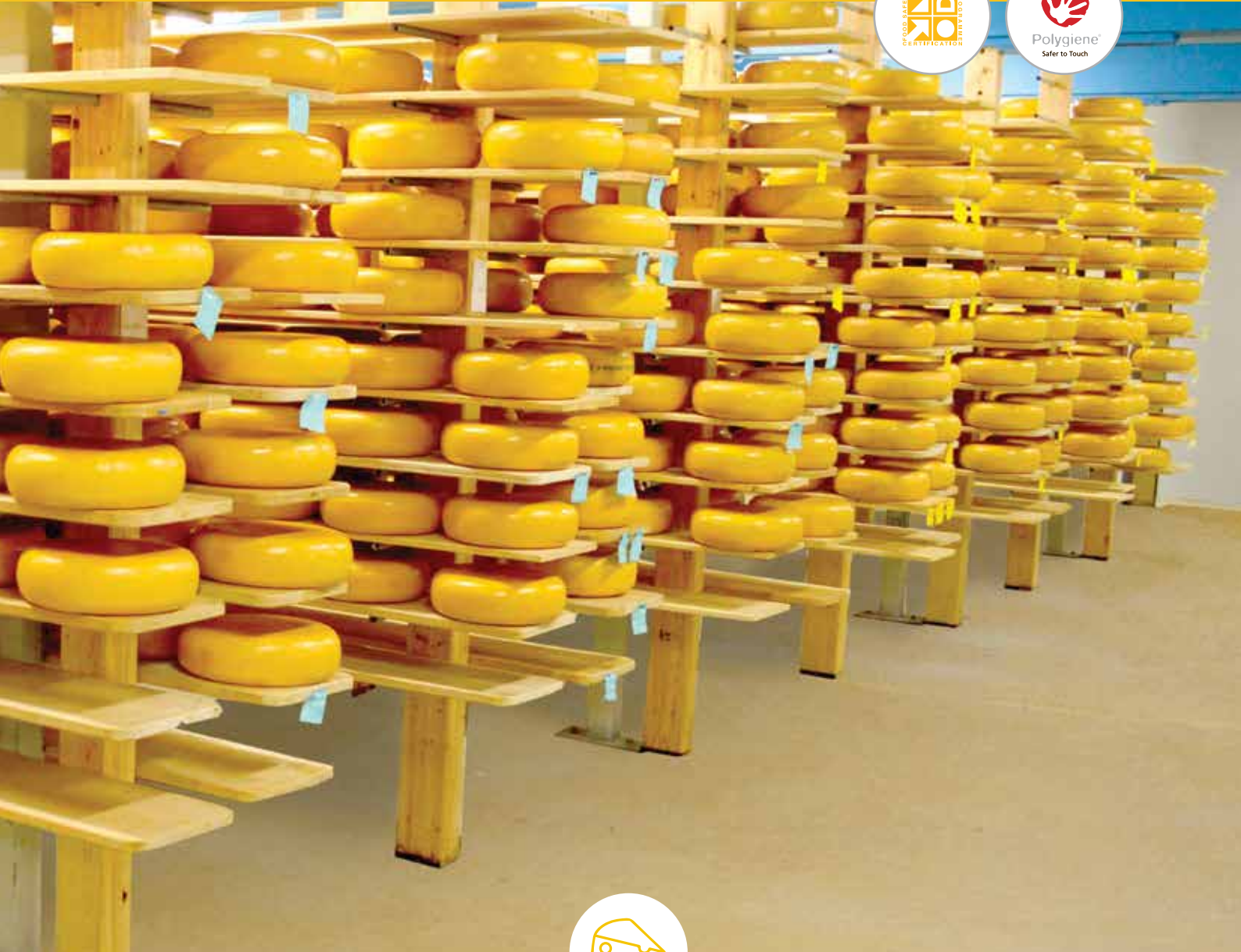


Flowcrete

for the world at your feet



A complete package of specialty resin and antimicrobial treated floor coating systems for...

DAIRY & CHEESE PLANTS

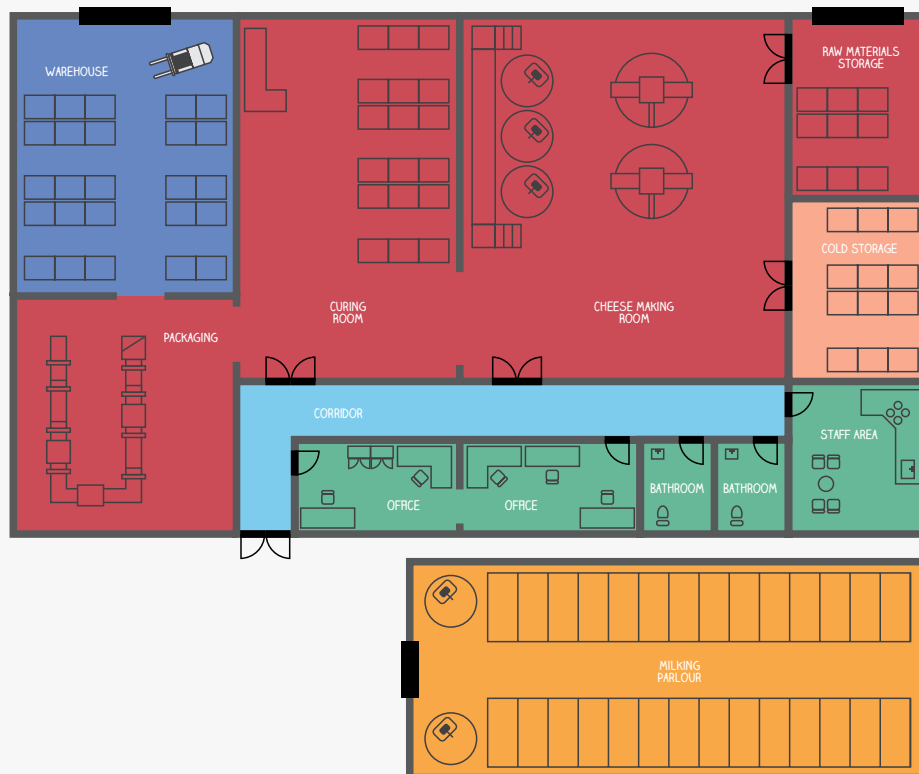
Welcome to Flowcrete UK

Like most wet processing facilities, dairy and cheese plants can prove a challenging environment for unprotected concrete. Protective floor coating systems must offer sufficient chemical resistance to corrosive dairy fats, lactic acids and proteins as well as provide an anti-slip, easily cleaned and de-greased surface.

In addition, floors found in dairy and cheese processing facilities are subject to heavy forklift and pallet truck traffic as well as thermal shock conditions resulting from pressurised steam cleaning - both of which can lead to mechanical damage.

Flowcrete UK offers a complete package of specialty resin and antimicrobial treated floor coating systems designed to cater for all areas within dairy and cheese processing facilities.

Dairy Plant Floor Plan



Deckshield ID

Flowfresh HF

Flowfresh MF/SR*

Flowfresh RT

Flowcoat SF41

Flowfast Quartz/Classic
for Wet Areas

✓ For the application suitability of each system, look out for the check mark symbol throughout the brochure.



Polygiene® Antimicrobial Effectiveness



SARS-CoV	✓
Salmonella Typhi	✓
MRSA	✓
Enterococcus Faecalis	✓
E-coli	✓
Staphylococcus Aureus	✓
Listeria	✓
Streptococcus Pyogenes	✓
C.difficile	✓
Pseudomonas Aeruginosa	✓
Proteus Vulgaris	✓
Campila Bacta	✓



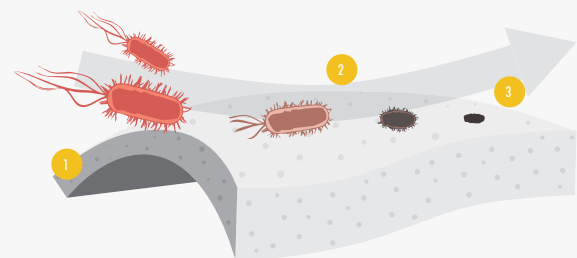
HACCP International Certified Hygienic Flooring

Dairy and cheese plant floors are subject to spillage from water, milk, brine and whey. As such, they can present a slip and hygiene risk.

Resin flooring systems ensure a non-porous, smooth and seamless surface where there is nowhere for bacteria or mold spores to grow.

Flowcrete UK's HACCP International and ISO 22196 certified cementitious urethane flooring materials offer enhanced protection with the inclusion of Polygiene®, a silver-ion antimicrobial agent, designed to protect the surface from degradation caused by microbial growth.

How Does Polygiene® Work?



- 1 The silver ions are distributed throughout the floor.
- 2 The silver ions migrate to the surface.
- 3 They inhibit bacteria growth by penetrating the cell membrane.

Flowfresh MF (4–6 mm)

Flowfresh MF is a heavy duty, chemical resistant antimicrobial treated polyurethane resin floor finish. Best suited to dry processing zones subject to heavy duty wheeled traffic these trowel applied systems deliver an attractive smooth matt coloured floor finish.

PACKAGING, CURING ROOMS, CHEESE MAKING ROOMS, RAW MATERIALS STORAGE

Standard Colours



Cream



Ochre



Red



Mustard



Mid Grey



Dark Green



Gentian Blue



Dark Grey



TEMPERATURE RESISTANCE

Tolerant to intermittent spillages up to 70°C or sustained heat from -20°C to 60°C

FIRE RESISTANCE

EN 13501-1

B_{FL} - s1

SLIP RESISTANCE

BS 7976-2

Dry >40



*Flowfresh SR is available for slip resistance.

Please contact your local Flowcrete representative for further information. A full technical profile is available at www.flowcrete.co.uk



Flowfresh HF (6–9 mm)

Flowfresh HF is a trowel applied, heavy-duty and wear resistant antimicrobial treated polyurethane resin floor screed. Flowfresh HF provides a durable, anti-slip finish, which is resistant to thermal shock, steam cleaning and moisture vapour transmission.

COLD STORAGE

Standard Colours



Cream



Ochre



Red



Mustard



Dark Green



Mid Grey



Dark Grey



Gentian Blue

TEMPERATURE RESISTANCE

Tolerant to intermittent spillages up to 120°C or sustained dry heat from -40°C to 105°C (at 9 mm thickness)

COEFFICIENT OF THERMAL EXPANSION

ASTM C531

3.74×10^{-5} mm/mm°C

SLIP RESISTANCE

BS 7976-2

Dry >40

Applied colours may differ from the examples shown. For a full technical profile, colour chart and samples, contact your local Flowcrete office.



Flowfresh contains an antimicrobial additive to reduce the build up of bacteria, and is suitable for daily washdowns and regular cleaning.

Flowfresh RT (6-9 mm)

Flowfresh RT is a slip-resistant, polyurethane screed for use in wet areas subject to high volumes of traffic. Best suited to wet processing zones where it is subject to high volumes of foot and wheeled traffic, this trowel applied system delivers a seamless joint-free matt finish.

MILKING PARLOURS

Standard Colours



TEMPERATURE RESISTANCE	
Tolerant to intermittent spillages up to 120°C or sustained dry heat from -40°C to 105°C (at 9 mm thickness)	
IMPACT RESISTANCE	
EN ISO 6272	21 Nm
SLIP RESISTANCE	
BS 7976-2	Dry >40

Applied colours may differ from the examples shown. For a full technical profile, colour chart and samples, contact your local Flowcrete office.

Ask us about our range of wall coatings that contribute to a hygienic barrier throughout your facility.



Flowfast Quartz & Classic for Wet Areas (4 mm)

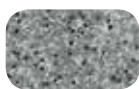
Durable, fast curing MMA resin floor toppings made from decorative quartz granules in a clear resin binder. Delivers a slip and chemical resistant finish suited to environments subject to heavy foot traffic and aggressive cleaning agents.

✓ OFFICES, BATHROOMS, STAFF AREAS

Standard Industrial Colours



Red 301



Grey 704



Green 602



Cream 103



Blue 502



Yellow 104



TEMPERATURE RESISTANCE

Tolerant up to 70°C

FIRE RESISTANCE

EN 13501-1

B_{FL} - s1

SLIP RESISTANCE

BS 7976-2

Dry >40

Applied colours may differ from the examples shown. For a full technical profile, colour chart and samples, contact your local Flowcrete office.

Flowcoat SF41 (0.35 mm)

A high performance, solvent free, epoxy resin coating that can deliver an anti-slip profile by inclusion of graded aggregate between coats. Flowcoat SF41 is also hard wearing against sustained vehicle traffic, as well as chemical and abrasion resistant.

✓ CORRIDORS

Standard Colours



Light Grey
232



Beige
326



Goosewing Grey
222



Tile Red
637



Mid Grey
280



Forest Green
754



Dark Grey
281



Traffic Blue
466



SLIP RESISTANCE

BS 7976-2	Dry >40
-----------	---------

IMPACT RESISTANCE

EN ISO 6272	10 Nm
-------------	-------

BOND STRENGTH

EN 1542	> 2.5 N/mm ²
---------	-------------------------



Deckshield ID (2-3 mm)

Deckshield ID is a flexible, solvent free polyurethane car park deck coating system for intermediate decks of multi storey structures. Deckshield ID cosmetically enhances and reduces noise, making multi storey car parks brighter, safer environments to visit.

✓ WAREHOUSES

Standard Colours



Forest Green



Mid Grey



Dark Grey



Tile Red



Traffic Purple



Traffic Blue

TEMPERATURE RESISTANCE

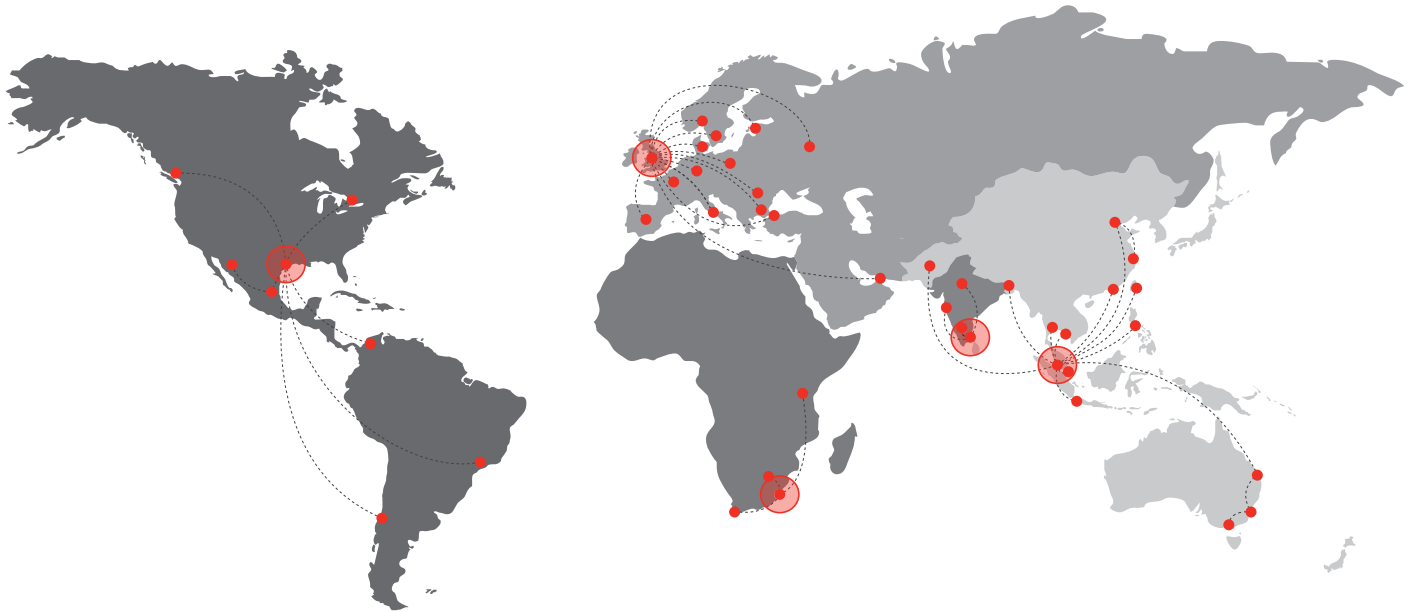
Softens over 70°C, hardens on cooling

IMPACT RESISTANCE

EN ISO 6272-1	Class II: ≥10 Nm
---------------	------------------

ABRASION RESISTANCE

EN ISO 5470-1	Weight loss <3000mg using H22 wheel, 1000 cycles, load 1000g
---------------	--



Flowcrete

World leader in seamless resin flooring solutions and other specialist coatings.

Europe & Middle East

Baltic States	+48 883 303 880	latvia@flowcrete.com
Bulgaria	+359 898 61 58 31	bulgaria@flowcrete.com
Denmark	+46 435 40 01 10	denmark@flowcrete.com
France	+33 1 60 61 74 42	france@flowcrete.com
Germany	+49 4187 50 29 470	germany@flowcrete.com
Italy	+39 339 4853258	italy@flowcrete.com
Norway	+47 6486 0830	norway@flowcrete.com
Poland	+48 22 879 8907	poland@flowcrete.com
Romania	+40 766 596 991	romania@flowcrete.com
Russia	+7 916 931 35 13	russia@flowcrete.com
Spain	+34 937 07 0872	spain@flowcrete.com
Sweden	+46 435 40 01 10	sweden@flowcrete.com
Turkey	+90 212 294 6567	turkey@flowcrete.com
UAE	+971 4 886 4728	uae@flowcrete.com
UK	+44 1270 753 000	uk@flowcrete.com

Africa

East Africa	+254 20 682 1011	eastafrica@flowcrete.com
South Africa	+27 31 701 0017	southafrica@flowcrete.com

India

India	+91 44 4017 6600	india@flowcrete.com
-------	------------------	---------------------

Asia Pacific

Australia	+61 7 3205 7115	australia@flowcrete.com
Bangladesh	+88 02 985 7222	bangladesh@flowcrete.com
China	+86 10 8472 1912	china@flowcrete.com
Hong Kong	+852 2795 0478	hongkong@flowcrete.com
Indonesia	+62 21 252 3201	indonesia@flowcrete.com
Malaysia	+60 3 6277 9575	malaysia@flowcrete.com
Pakistan	+92 337 3159272	pakistan@flowcrete.com
Philippines	+63 2 834 6506	philippines@flowcrete.com
Singapore	+65 6848 7166	singapore@flowcrete.com
Taiwan	+886 916 954 291	taiwan@flowcrete.com
Thailand	+66 2539 3424	thailand@flowcrete.com
Vietnam	+84 28 6287 0846	vietnam@flowcrete.com

Americas

Brazil	+55 11 3230 1107	brazil@flowcrete.com
Canada	+1 604 628 1782	canada@flowcrete.com
Chile	+56 2 2938 1962	chile@flowcrete.com
Colombia	+57 1 381 9254	colombia@flowcrete.com
Mexico	+01 800 099 0468	mexico@flowcrete.com
USA	+1 936 539 6700	usa@flowcrete.com

*Whilst every care has been taken to ensure that the information included in this document was accurate at the time of printing, Flowcrete reserves the right to change product specifications at any time without prior notice. The photographs and colours reproduced in this publication are within the constraints of the printing process and are not to be used for matching purposes. All photographs are used for approximate representation only and may not show the actual products on offer. E&OE.