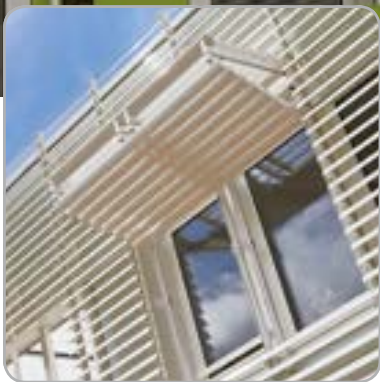




Creating healthy spaces



# Cilium®

Dynamic sun protection in aluminium



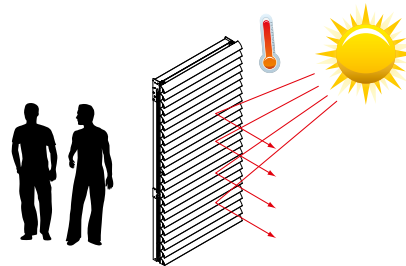
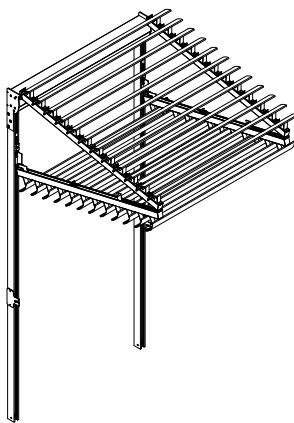
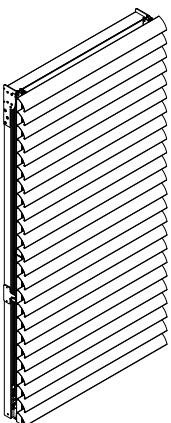
**Cilium® is a dynamic sunshade by RENSON® that can be transformed from a vertical sunshade in front of a window to a horizontal, open position above a window.**

Cilium® meets the requirements set by the EPBD “Energy Performance of Buildings Directive”. Based on these guidelines, energy performance standards were introduced in all EU Member States for new builds and building renovations with the goal to reduce energy use in buildings, including by:

**- Limiting energy use through artificial cooling**

It is essential to limit the amount buildings over-heat during the warm summer months in order to minimize the use of artificial cooling systems.

**Cilium®** offers the solution for this: in a closed vertical position the Cilium® offers optimal protection against the sun’s direct rays.

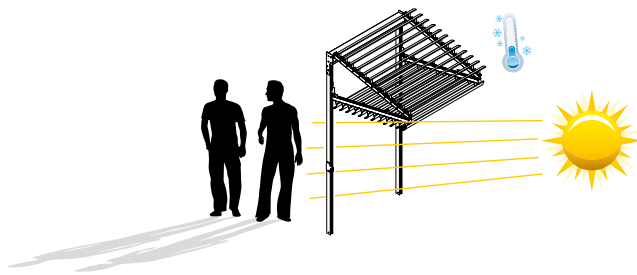




- **Limiting energy use through artificial heating**

In most buildings, the primary energy user continues to be the heating system. It is strongly recommended to use the sun's natural rays during cold periods.

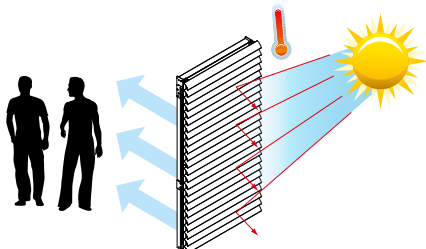
**Cilium®** offers the solution for this: during the cold winter months the low position of the warm rays can flow unhindered into the building under the retracted folding shutter.



- **Limiting energy use through artificial lighting**

Artificial lighting is one of the primary energy consumers. It is highly recommended to make optimal use of natural sunlight within buildings to limit energy use.

**Cilium®** offers the solution to this: by its open lamellar structure indirect diffused light can enter the building even when it is in a closed vertical position.





Sunclips® Evo SE.096



Sunclips® Evo SE.130



**Cilium®** is available as standard in two versions:

- with Sunclips Evo SE. 096 cladding  
Maximum dimensions b x h: 1200 mm x 3000 mm
- with Sunclips Evo SE. 130 cladding  
Maximum dimensions b x h: 1600 mm x 3000 mm

**Cilium®** is, due to its far-reaching aesthetic finish, suited for applications in projects and also house construction.

**Cilium®** can be discretely integrated in exterior walls with identical cladding or as a separate element constructed in front of a window.

**Cilium®** is completely rustproof and consists mainly of aluminium and is available in anodized or powder coated versions.

**Cilium®** is powered by 230V motor and belt-drive system.

**Cilium®** guarantees exceptional quality due to the integration of the patented Stabil-hook mechanism.



RENSON® reserves the right to make technical changes to the products shown.  
The most recent versions of our brochures can be downloaded from [www.renson.eu](http://www.renson.eu)

N.V. RENSON® Sunprotection-Projects S.A • Maalbeekstraat 6 • IZ 2 Vijverdam • B-8790 Waregem  
Tel. +32 (0)56 62 71 07 • Fax +32 (0)56 62 71 47 • [projects@renson.be](mailto:projects@renson.be) • [www.renson.eu](http://www.renson.eu)

