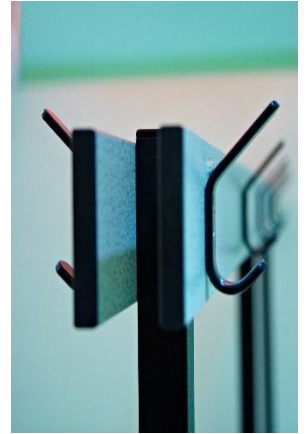
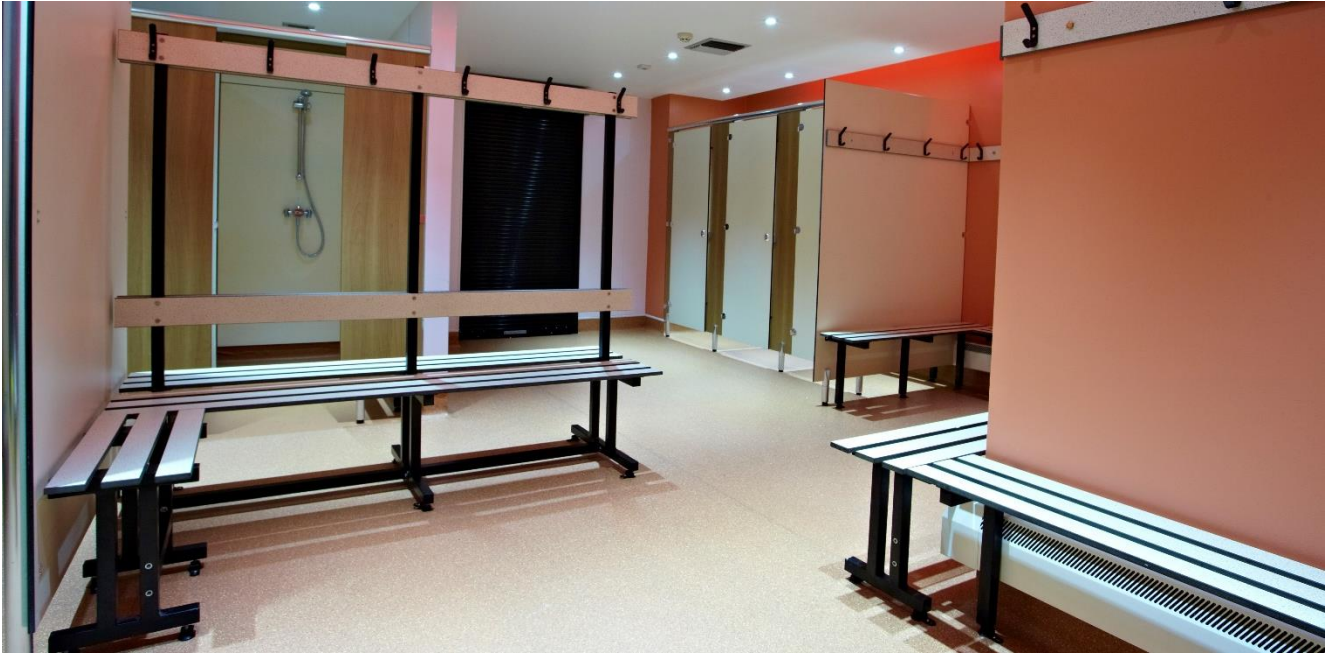


Bench Systems



Our bench systems are designed to provide exceptional long-life solutions for cloakroom and changing areas.

Solid Grade Laminate bench seats can be specified in the same colours as your washroom furniture to create stunning and consistent design themes throughout your project.

designers and manufacturers of exemplary washroom systems

call 01603 424855 fax 01603 413336 email info@dunhamsofnorwich.co.uk
Dunhams Washroom Systems The Granary School Road Neatishead Norwich NR12 8BU

www.dunhamsofnorwich.co.uk

VAT Registration No. 105 2240 29

Partners BH Dunham MH Dunham JN Dunham SG Dunham TJ Percival

Specification

Frame

Type: 38mm steel box section, fully welded and zinc treated

Finish/Colour: Polyester powder coated finish

Seat

Material: 13mm solid grade laminate slats / seat board

Colour: Refer to Dunhams colour selector

Dimensions

Seat Depth: Island 560 to 700mm / Free-standing 300 to 700mm / Wall to floor 300 to 700mm / Cantilever 300 to 450mm

Height: 450mm from floor level to top of seat / Island benching 1250mm std from seat height to top of hookboard

Configurations

Island: Double sided island bench complete with integrated hookboard and backrest

Free-standing: Free-standing bench suitable for back to wall and island applications

Wall/Floor: Wall to floor bench for back to wall applications

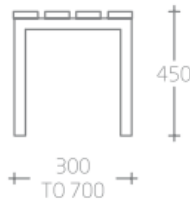
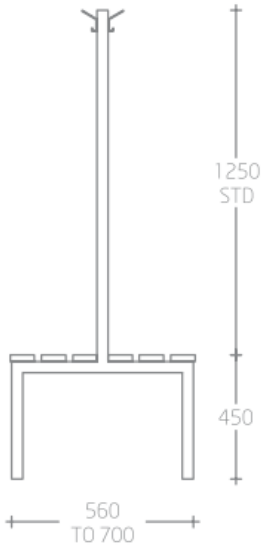
Cantilever: Cantilever bench for back to wall applications

Options

Extras: Matching hookboards and backrests / Adjustable foot fixing / Shoe trays / Shelving all available as extras

Frame Material: Stainless steel frames available on request

Technical Drawings

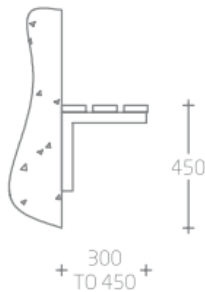
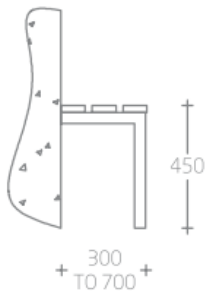


Island

Double sided island bench complete with integrated hookboard and backrest.

Free-standing

Freestanding bench suitable for back to wall and island applications.



Wall to floor

Wall to floor bench for back to wall applications.

Cantilever

Cantilever bench for back to wall applications.

designers and manufacturers of exemplary washroom systems

call 01603 424855 fax 01603 413336 email info@dunhamsofnorwich.co.uk
Dunhams Washroom Systems The Granary School Road Neatishead Norwich NR12 8BU

www.dunhamsofnorwich.co.uk

VAT Registration No. 105 2240 29

Partners BH Dunham MH Dunham JN Dunham SG Dunham TJ Percival