



[www.bohle-group.com](http://www.bohle-group.com)

# Bohle Vigo Walk-In Shower

# Simply walk through: The Vigo walk-in shower

Whether open to the front and fixed to the wall or detached and accessible from both sides: The Vigo walk-in shower does without a reinforcement bar. As a passage open to one or both sides, the shower is an elegant solution for a barrier-free bathroom. The stainless steel profiles stand out thanks to their minimalistic design for the greatest possible transparency. The glass pane is inserted into the profile, no glass cut-outs or bore holes are required.

The shower wall can be adjusted to suit requirements, the maximum possible ceiling height is 2800 mm with a glass height of 2200 mm. This guarantees the greatest possible flexibility when designing a bathroom.



## Product highlights:

- ✓ Modern and elegant – the shower cubicle of the future
- ✓ Barrier-free – easy access, suitable for wheelchair users
- ✓ Robust – reliable stability
- ✓ Safe – protected glass edges
- ✓ Simple – plug-in glass installation
- ✓ Minimal glass processing – no cut-outs required
- ✓ Flexible – can be cut to size
- ✓ Multifunctional – partition wall for any area

## ▶ Bohle Vigo - Walk-In Shower

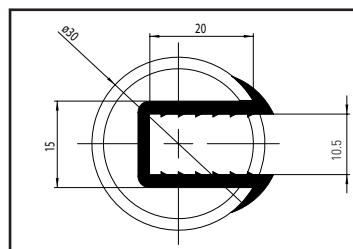
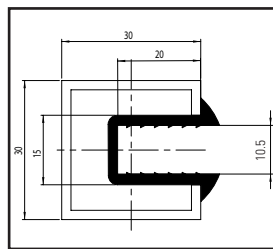


**i** Material: stainless steel (AISI 1.304) · Glass type: tempered glass  
8 - 10 mm · Length: can be trimmed to size 2800 mm · Glass height: max.  
2200 mm

### Included in delivery:

- 1x Stainless steel profile incl. mounting accessories
- Rubber profile for 8 and 10 mm

Art. no.	Design · Finish · Dimensions
BO 5215435	Square · matt brushed · 30 x 30 mm
BO 5215436	Square · polished · 30 x 30 mm
BO 5215437	Round · matt brushed · $\varnothing$ 30 mm
BO 5215438	Round · polished · $\varnothing$ 30 mm



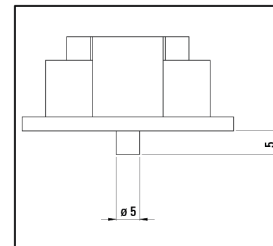
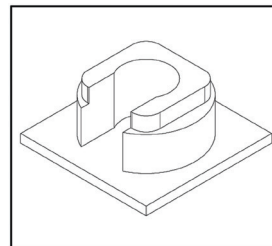
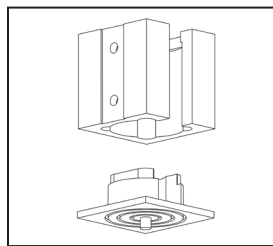
## ▶ Bohle Vigo Bonding Plate square



Bonding plate for screwless floor mounting • with corrugated bottom surface for optimum distribution of the adhesive • only one stabilising bore hole in the floor needed

**i** Material stainless steel AISI 304 · Shape square

Art. no.	Finish
BO 5215700	matt brushed
BO 5215701	polished



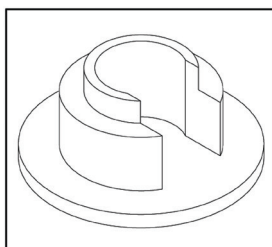
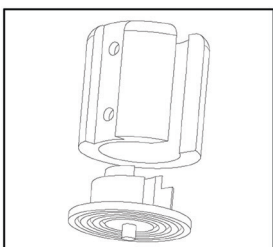
## ▶ Bohle Vigo Bonding Plate round



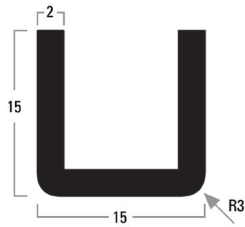
Bonding plate for screwless floor mounting • with corrugated bottom surface for optimum distribution of the adhesive • only one stabilising bore hole in the floor needed

**i** Material stainless steel AISI 304 · Shape round

Art. no.	Finish
BO 5215702	matt brushed
BO 5215703	polished



## ▶ U-Channels V2A · 15 x 15 x 15 x 2 mm

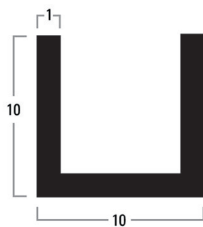


For framing glass panels, for edge protection or for all-glass constructions and diverse applications · minimum surface roughness, exquisite-looking finish

**i** Tolerance  $\pm 100$  mm · Material stainless steel V2A

Art. no.	Finish · Length
BO 5201574	polished · 5000 mm
BO 5201575	brushed · 5000 mm
BO 5201577	polished · 2150 mm
BO 5201576	brushed · 2150 mm

## ▶ U-Channels 10 x 10 x 10 x 1 mm

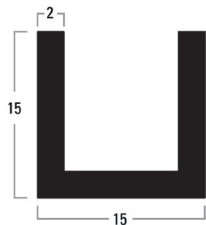


For framing glass panels, for edge protection or for all-glass constructions and diverse applications · aluminium, minimum surface roughness, exquisite-looking finish

**i** Length 5000 mm

Art. no.	Finish
BO 5201562	shiny chrome-plated

## ▶ U-Channels 15 x 15 x 15 x 2 mm



For framing glass panels, for edge protection or for all-glass constructions and diverse applications · aluminium, minimum surface roughness, exquisite-looking finish

**i** Length 5000 mm

Art. no.	Finish
BO 5201572	shiny chrome-plated

### United Kingdom and Ireland

Bohle Ltd.

Fifth Avenue  
Tameside Park · Dukinfield  
Cheshire · SK16 4PP

T +44 161 342 1100  
F +44 161 344 0111

info@bohle.ltd.uk