

## Cavity Drain Systems

- Type C Drained Protection in accordance with BS8102 (2009)
- Suitable for existing, retrofit and new build projects
- Quick and easy to install with minimal surface preparation required
- Tough, studded HDPE, HDPP and PP sheets for internal and external use
- Sympathetic to heritage buildings and in conservation projects



## About Type C waterproofing systems

BS 8102: 2009, the code of practice for the protection of below ground structures from water from the ground, defines three types of waterproofing system – Type A (barrier), Type B (integral) and Type C (drained). Any of these, or a combination of two or more systems, may be specified in a structural waterproofing project.

### **Waterproof concrete:**

Cavity drain membranes supplied by Triton Systems can be used in conjunction with waterproof concrete incorporating Triton TT Admix as a combined system under BS 8102: 2009 and as specified by NHBC within NHBC Chapter 5.4 - Waterproofing of basements and other below ground structures.

### **Support and education:**

For the specifier or contractor who ideally will be looking for a single point of supply and support, Triton supplies a comprehensive range of each type of waterproofing system along with all the ancillary products required. All Triton's systems are backed up with expert technical support.

The company also offers a full programme of training courses for architects, surveyors and contractors including RIBA approved CPD seminars on basement waterproofing and green/living roofs. More details can be found in the Resources section at [tritonsystems.co.uk](http://tritonsystems.co.uk)



Through our sister company, INK Technical Services Ltd, we can offer a fully P.I. insured, detailed waterproofing design service – expertly tailored to your project. This is undertaken by technical experts who understand the essential details that need to be incorporated into the design and who will ensure that nothing is overlooked. Please contact our office directly or visit:

[inktechnicalservices.com](http://inktechnicalservices.com)



*A fully sealed Type C system showing cavity drain membranes installed to walls and floor*



*We supply a full range of pumps, sumps, drainage channels and alarms to provide effective mechanical drainage solutions for our Type C waterproofing systems*



## PLATON P8

- BBA approved
- Suitable for use on walls and floors
- Quick and easy to install
- Suitable for use as a Radon barrier

A high-density polyethylene (HDPE) cavity drain membrane which is impermeable and resistant to most chemicals used in building construction. Tough but pliable enough so that it can be formed around corners and projections without the risk of breaking, even in very low temperatures. The product can be easily cut with a knife or scissors.

### Specification:

In accordance with NBS Specification J40 (clause 290) – Flexible Sheet Tanking/Damp Proofing. Type C Drained Protection in accordance with BS8102 (2009).

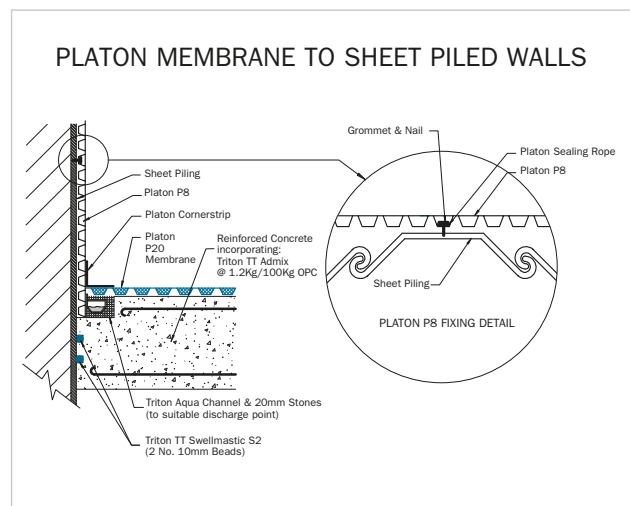
Suitable for use as a Radon barrier in accordance with BRE Report – BR211 (1999) Radon: Guidance on protective measures for new dwellings.

### Technical Data:

Roll size:	2.07m x 20m
Stud height (net):	6.5mm
Unit weight:	0.45 kg/m <sup>2</sup>
Life expectancy:	At least 50 years for defined applications
Air gap volume:	4.01 l/m <sup>2</sup>
Drainage capacity:	Approximately 3.8 l/m <sup>2</sup>
Max compressive strength:	150 kN/m <sup>2</sup>
Deformation under long term loading:	Max. 20% (at 50 kN/m <sup>2</sup> )
Thermal resistance:	0.18 m <sup>2</sup> . °C/W
Water vapour resistance:	280m equivalent air layer



Platon P8 cavity drain membrane shown installed to walls



## PLATON P20

- BBA approved
- Heavy duty, deep studded HDPE cavity drain membrane
- Principally used on floors
- For areas subject to high volume water penetration
- Impermeable to water, gas and water vapour
- Available in roll or sheet form

P20 is a high capacity drainage membrane recommended for use on all floor applications below ground due to its ability to control free flowing water. The deep stud profile is designed to resist blockages caused by lime deposits. P20 Sheet is recommended for easier detailing around columns and access covers etc.

### Specification:

In accordance with NBS Specification J40 (clause 290) – Flexible Sheet Tanking/Damp Proofing. Type C Drained Protection in accordance with BS8102 (2009).

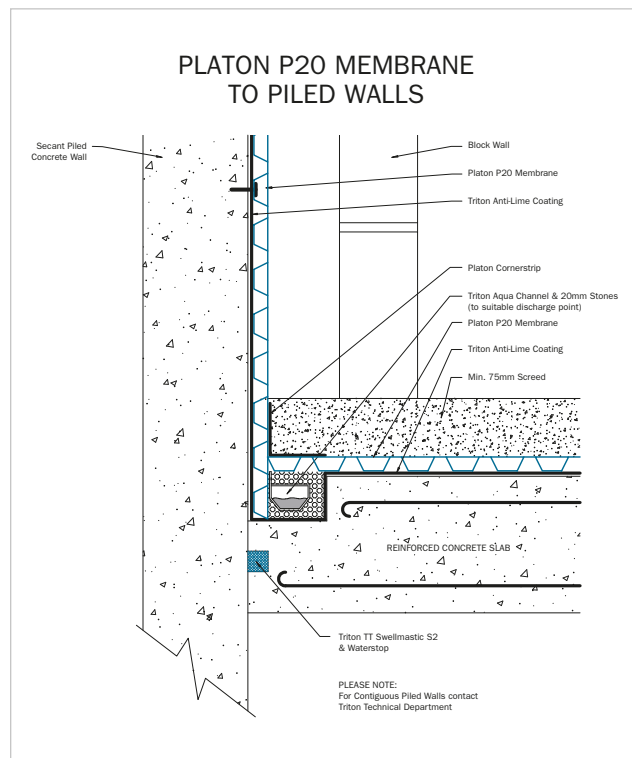
Suitable for use as a Radon barrier in accordance with BRE Report – BR211 (1999) Radon: Guidance on protective measures for new dwellings.

### Technical Data:

Roll Size:	2m x 20m
Sheet size:	1.36 x 2.22m
Stud height:	20mm
Unit weight:	0.95 kg/m <sup>2</sup>
Life Expectancy:	At least 50 years for defined applications
Air Gap Volume:	14 l/m <sup>2</sup>
Drainage Capacity:	Approximately 13 l/m <sup>2</sup>
Max compressive strength:	240 kN/m <sup>2</sup>
Deformation under long term load:	Max. 10% (load of 50 kN/m <sup>2</sup> )
Thermal resistance:	0.17m <sup>2</sup> .°C/W
Water vapour resistance:	350m equivalent air layer



Platon P20 membrane shown installed to floor





### PLATON PLASTER BASE

- BBA approved
- HDPE cavity drain membrane for direct plastering
- Single component, no mesh or fabric layer
- Unique undercut stud design creates mechanical key for plaster
- Easy to cut, fix and seal
- Impermeable to water, gas and water vapour

Can be installed on internal walls and vaulted ceilings above or below ground level. The substrate remains visible through the clear membrane for precise fixing. Suitable for use with sand and cement renders and most lightweight and renovating plasters. Plasterboard can be fixed directly to the membrane using the 'Dot and Dab' method.

**Specification:**

In accordance with NBS Specification J40 (clause 290) – Flexible Sheet Tanking/Damp Proofing. Type C Drained Protection in accordance with BS8102 (2009).

**Technical Data:**

Roll size:	2m x 20m
Stud height:	5mm
Unit weight:	0.48 kg/m <sup>2</sup>
Life expectancy:	At least 50 years for defined applications
Air gap volume:	3.2 l/m <sup>2</sup>
Drainage capacity:	Approximately 1.84 l/m <sup>2</sup>



### PLATON PLASTER MESH

- HDPE membrane with integrated mesh layer for direct plastering
- For internal application on walls above or below ground level

Platon Plaster Mesh is a double layered cavity drain membrane comprising a studded HDPE layer bonded to an 'HDPE twist' mesh layer which forms a key for most common plasters and renders. Plasterboard can be fixed directly to the membrane using the 'Dot and Dab' method. As with other Platon membranes, Platon Plaster Mesh can be fixed directly to existing wall finishes without the need for extensive hacking off or preparation.

**Specification:**

In accordance with NBS Specification J40 (clause 290) – Flexible Sheet Tanking/Damp Proofing. Type C Drained Protection in accordance with BS8102 (2009).

**Technical Data:**

Roll size:	2m x 20m
Stud height:	8mm
Unit weight:	0.7 kg/m <sup>2</sup>
Life expectancy:	At least 50 years for defined applications
Air gap volume:	5.5 l/m <sup>2</sup>
Drainage capacity:	Approximately 4.0 l/m <sup>2</sup>



## PLATON DOUBLE DRAIN

- A membrane system for external basement walls which protects underlying waterproofing from backfill damage
- Filter fabric layer ensures soil cannot enter membrane cavities to impede drainage
- De-pressurisation and drainage layer for horizontal and vertical surfaces

Platon Double Drain is a dual layer external drainage and protection membrane for use on retaining walls, terraces, balconies, podium decks etc.

### Specification:

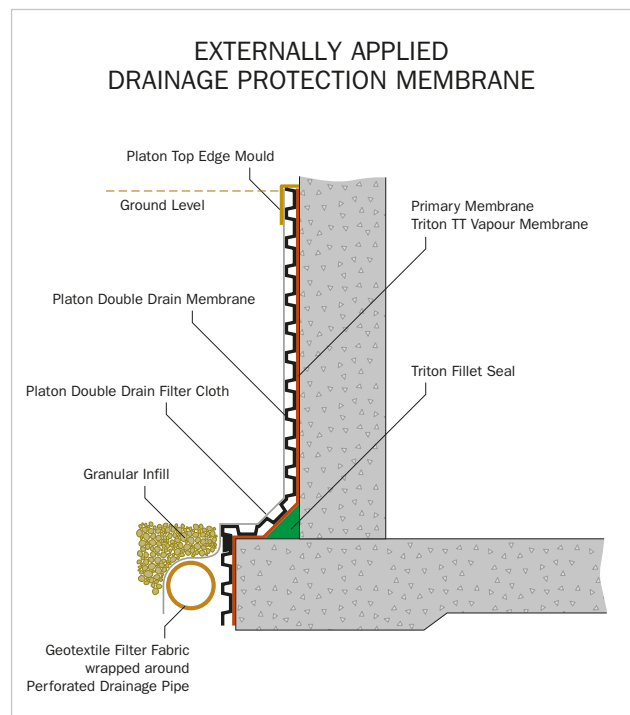
In accordance with NBS Specification J40 (clauses 290/295/380) – Flexible Sheet Tanking/Damp Proofing. Type C Drained Protection in accordance with BS8102 (2009).

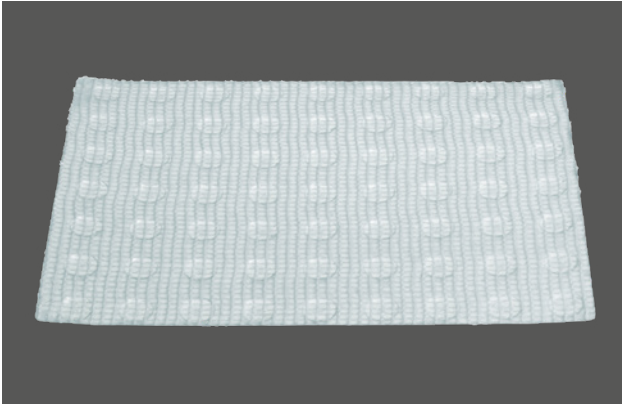
### Installation:

Platon Double Drain can be fixed vertically or horizontally to suit the application. It must be installed over a primary membrane, such as Triton TT Vapour Membrane or Triton TWS EX-100 self-adhesive sheet membrane. Fix Double Drain along the top edge above the primary membrane, with Platon Double Drain cramps at 250mm centres. Overlap vertical and horizontal joints by 120mm. Filter fabric can be pulled back for successive overlap of the membrane and filter fabric. Fix Platon Top Edge Moulding along the top edge of the membrane to avoid debris or backfill material from blocking the drainage channels. Ensure adequate drainage from Platon Double Drain to drainage pipes.

### Technical Data:

Roll size:	2m x 15m
Stud height:	8mm
Unit weight:	0.58 kg/m <sup>2</sup>
Life expectancy:	At least 50 years for defined applications
Air gap volume:	4.0 l/m <sup>2</sup>
Drainage capacity:	Approximately 2.3 l/m <sup>2</sup>
Max compressive strength:	200 kN/m <sup>2</sup>





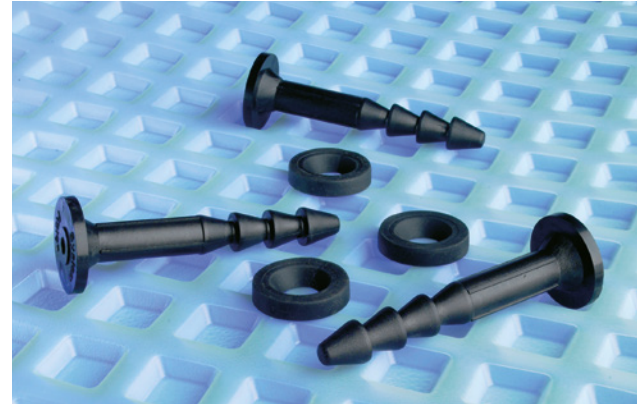
### PLATON PB2 MESH

- PP membrane with integrated mesh layer for direct plastering
- For internal application on walls above or below ground level
- Compatible with other Platon membranes

A 3mm polypropylene cavity drain membrane suitable for direct plastering. Suitable for use as an isolating plaster membrane following remedial treatments.

#### Technical Data:

Roll Size:	1m x 20m and 2m x 20m
Raw Material:	PP
Sheet thickness:	Nominal 0.50mm
Stud height:	Approx 2.0mm
Construction height:	Approx 2.5mm
Unit weight:	0.505 kg/m <sup>2</sup>
Working temperature:	Max +60°C
Softening temperature:	+160°C
Linear coefficient of thermal expansion:	0.18mm/m°C
Water vapour resistance:	250m equivalent air layer
Life expectancy:	At least 50 years for defined applications.
Colour:	Clear/Translucent, Mesh – White



### PLATON CAVITY DRAIN MEMBRANES – ANCILLARIES

A full range of ancillary products is available from Triton for the installation of Platon cavity drain membranes including:

Platon Brick Plugs	10mm x 75mm (100/box)
Platon Plaster Plugs	8mm x 70mm (500/box)
Platon Sealing Tape	2mm x 30mm x 20m (5/box)
Platon Sealing Rope	10mm x 5m (10/box)
Platon Overtape	115mm x 1mm x 25m
Platon Corner Strip	150mm x 1.5mm x 10m
Platon X Cramps	60 per box
Platon Top Edge Mould	2m
Platon Sealer	300ml cartridge
Triton Anti-Lime Coating	25kg drum

To calculate quantities required, please refer to the Platon Cavity Membrane Fixing and Sealing Calculator at [tritonsystems.co.uk](http://tritonsystems.co.uk)

### PUMPS & DRAINAGE

Our extensive range of pumps, sumps, drainage channels and alarms provides effective and fully maintainable mechanical drainage solutions for cavity drain systems. Visit [tritonsystems.co.uk](http://tritonsystems.co.uk) for more information.



*Aqua Channel drainage conduit (with its rodding eyes and connector pieces) provides perimeter drainage to a sealed Type C system*



**Also available from Triton Systems:**

- BBA certified watertight concrete admix
- Liquid applied waterproof coatings for terraces, podiums, light-wells and lift pits
- High performance timber preservation and damp proofing products
- Ground gas barriers, flooring systems, anti-condensation products
- Products for structural repair
- Drainage and water storage membranes for green roofs
- Ancillary products for use with all of the above

**Please refer to [tritonsystems.co.uk](http://tritonsystems.co.uk) for:**

- More information about and booking forms for Triton training courses/RIBA approved CPD seminars on structural waterproofing
- Technical and Material Safety Data Sheets for all Triton products
- Detail drawings in PDF and DWG format
- Installation guides
- Product literature
- BBA and CE Marking Certificates
- Case studies



**Triton Systems**

Units 3 – 5 Crayford Commercial Centre, Greyhound Way, Crayford, Kent DA1 4HF  
Tel: 01322 318830 Fax: 01322 524017 Email: [info@tritonsystems.co.uk](mailto:info@tritonsystems.co.uk)

Triton Chemical Manufacturing Co Ltd trading as Triton Systems