

GEZE TS 1500 / TS 2000 / TS SYSTEM 4000
OVERHEAD DOOR CLOSERS WITH LINK ARM



CONTENTS

| | |
|---|-----------|
| Overview table GEZE System TS 4000/TS 2000 | 4 |
| Technics - GEZE Overhead door closer TS 4000 / TS 2000 | 6 |
| General product functions and information | 7 |
| Overhead door closers for single-leaf doors | |
| GEZE TS 1000 C | 8 |
| GEZE TS 1500 | 12 |
| GEZE TS 2000 NV | 16 |
| GEZE TS 2000 V | 22 |
| GEZE TS 4000 size 1-6 | 27 |
| GEZE TS 4000 size 5-7 | 33 |
| GEZE TS 4000 E | 39 |
| GEZE TS 4000 R | 44 |
| Overhead door closers with freeswing function | |
| GEZE TS 4000 EFS | 48 |
| GEZE TS 4000 RFS | 53 |
| Overhead door closer systems for double-leaf doors | |
| GEZE TS 4000 IS | 57 |
| GEZE TS 4000 E-IS | 63 |
| GEZE TS 4000 R-IS | 70 |
| Overhead door closer for single-leaf doors and gates | |
| GEZE TS 4000 Tandem | 74 |
| General product information | |
| Cover caps for GEZE door closers | 78 |
| Product information for door closers | 79 |

Overview table: GEZE System TS 4000/TS 2000

For single-leaf doors

| | TS 1000 C | TS 1500 | TS 2000 NV | TS 2000 V | TS 4000 size 1-6 | TS 4000 size 5-7 | TS 4000 E | TS 4000 R | TS 4000 EFS | TS 4000 RFS |
|--|-----------|-----------|-----------------|-----------------|------------------|------------------|-----------------|-----------------|-------------|-----------------|
| Approval for fire and smoke doors | ● | ● | ● | ● | ● | ● | ● | ● | ● | ● |
| Max. door leaf width (mm) | 950 | 1100 | 1100 | 1250 | 1400 | 1600 | 1400 | 1400 | 1400 | 1400 |
| Potential applications: | | | | | | | | | | |
| Mounting on door leaf, hinge side | ● | ● | ● | ● | ● | ● | ● | | ● | |
| Transom mounting, hinge side | | | | | | | ● ⁶⁾ | ● ⁶⁾ | | ● ⁶⁾ |
| Mounting on door leaf, opposite hinge side | | | ● ⁷⁾ | ● ⁷⁾ | ● ⁷⁾ | ● ⁷⁾ | | | | |
| Transom mounting, opposite hinge side | ● | ● | ● | ● | ● | ● | ● | ● | ● | ● |
| Functions: | | | | | | | | | | |
| Adjustable closing force | ● | ● | ● | ● | ● | ● | ● | ● | ● | ● |
| Back check | | | ● ²⁾ | ● ²⁾ | ● | ● | | | | |
| Latching action | ● | ● | ● | ● | ● | ● | ● | ● | ● | ● |
| Adjustable delayed closing action | | | | | ● ¹⁾ | | | | | |
| Adjustable closing speed | ● | ● | ● | ● | ● | ● | ● | ● | ● | ● |
| Mechanical hold-open ³⁾ | ● | ● | ● | ● | ● | ● ⁴⁾ | | | | |
| Electric hold-open | | | | | | | ● | ● | | |
| Electric hold-open for freeswing | | | | | | | | | ● | ● |
| Integrated smoke switch control unit | | | | | | | | ● | | ● |
| Integrated closing sequence control | | | | | | | | | | |
| Freeswing function | | | | | | | | | ● | ● |
| Page | 8 | 12 | 16 | 22 | 27 | 33 | 39 | 44 | 48 | 53 |

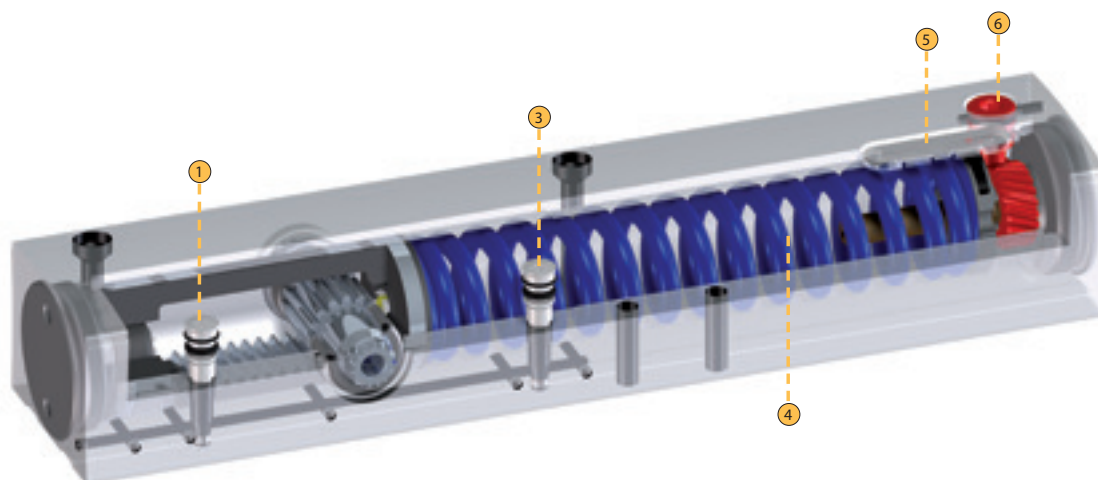
● = yes

¹⁾ Model TS 4000 S with delayed closing action²⁾ Model TS 2000 NV BC/TS 2000 V BC³⁾ Not with F and RD doors⁴⁾ Hold-open linkage only effective up to EN 6⁵⁾ System solution comprising TS 4000 IS/E-IS/R-IS on moving leaf combined with a TS 4000 /E/R-IS second unit on the fixed leaf and release mechanism in the rebate⁶⁾ With guide rail, closing force EN 3 only, no DIBt (German Institute for Building Technology) approval⁷⁾ With parallel arm mounting

GEZE SYSTEM TS 4000 / TS 2000 / TS 1500

| | TS 4000 tandem | TS 4000 IS ⁵⁾ | TS 4000 E-IS ⁵⁾ | TS 4000 R-IS ⁵⁾ |
|--|-----------------|--------------------------|----------------------------|----------------------------|
| Approval for fire and smoke doors | ● | ● | ● | ● |
| Max. door leaf width (mm) | >1600 | 1400 | 1400 | 1400 |
| Potential applications: | | | | |
| Mounting on door leaf, hinge side | ● | ● | ● | |
| Transom mounting, hinge side | | | | |
| Mounting on door leaf, opposite hinge side | ● ⁷⁾ | | | |
| Transom mounting, opposite hinge side | ● | ● | ● | ● |
| Functions: | | | | |
| Adjustable closing force | ● | ● | ● | ● |
| Back check | ● | | | |
| Latching action | ● | ● | ● | ● |
| Adjustable delayed closing action | | | | |
| Adjustable closing speed | ● | ● | ● | ● |
| Mechanical hold-open ³⁾ | | ● | | |
| Electric hold-open | | | ● | ● |
| Electric hold-open for freeswing | | | | |
| Integrated smoke switch control unit | | | | ● |
| Integrated closing sequence control | | ● | ● | ● |
| Freeswing function | | | | |
| Page | 74 | 57 | 64 | 70 |

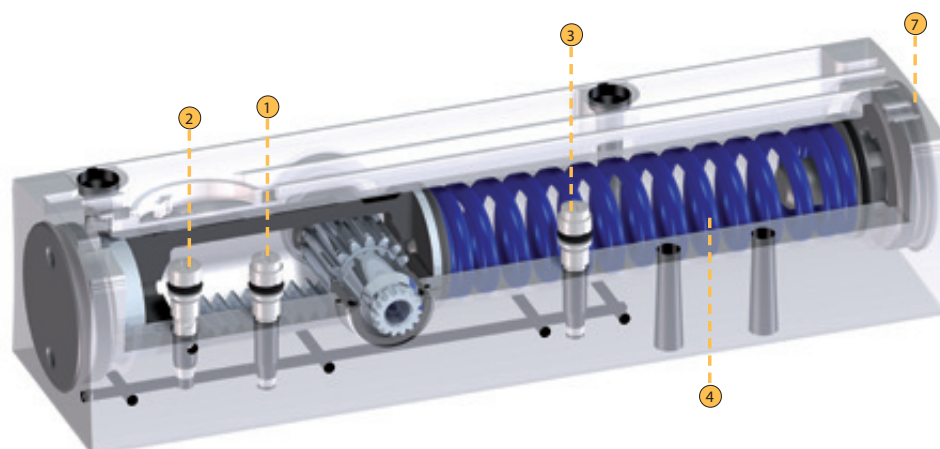
Technics - GEZE Overhead door closer TS 4000



Legende

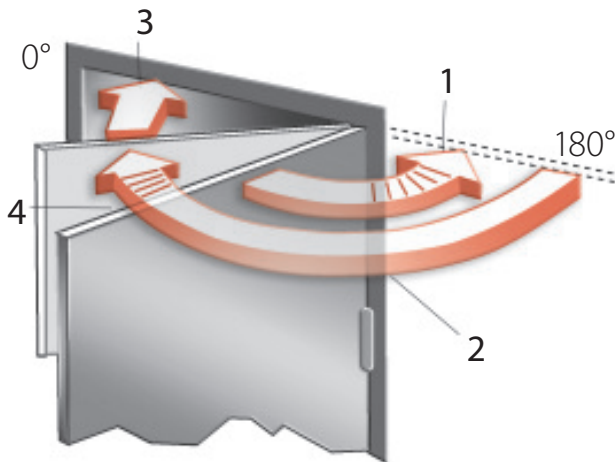
- ① Adjustment closing speed
- ② Adjustment latching action
- ③ Adjustment back check
- ④ Spring package
- ⑤ Display closing force
- ⑥ Adjustment closing force in front
- ⑦ Adjustment closing force on the side

Technics - GEZE Overhead door closer TS 2000 NV BC



General product functions and information

GEZE door closers with link arm



1) Back check

When doors are pushed open forcefully by approximately 90°, this function is activated in order to slow them down. However, it must not be used as a substitute for separate measures designed to limit the opening angle (such as a door stopper or other structural method), e.g. in the case of doors that open outwards or are liable to blow in the wind.

2) Closing speed

The speed at which a door closes can be set on an individual basis.

3) Latching action

When the door is just a few degrees away from reaching the closed position, this function increases the door speed in order to overcome any closing resistance (e.g. in the form of air resistance).

4) Delayed closing action

This function reduces the closing speed of a door or stops the door so that people have enough time to get through it.

GEZE door closers with adjustable closing force:

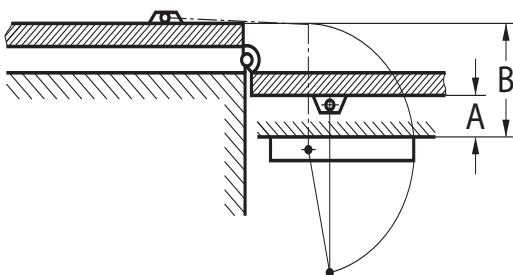
The relevant standards stipulate that the door closer size (closing force of the closer) must be selected in accordance with the door leaf width.

Where necessitated by the structural (door height, door weight) or local conditions (wind), the next size up must be set.

The GEZE TS 4000, TS 2000 and related versions offer several door closer sizes in one housing. The desired size can be selected by means of an adjustment screw or by altering the mounting position. The TS 4000 features an indicator so you can see which size is currently selected.

| Door closing force acc. to EN standard | Door leaf width (mm) |
|--|----------------------|
| Size 1 | up to 750 |
| Size 2 | over 751 up to 850 |
| Size 3 | over 851 up to 950 |
| Size 4 | over 951 up to 1100 |
| Size 5 | over 1101 up to 1250 |
| Size 6 | over 1251 up to 1400 |
| Size 7 | over 1401 up to 1600 |

Specially designed for mounting on opposite hinge side



Dimension A = soffit depth

Dimension B = soffit depth + 2 door thickness
+ 2 pivot point distance

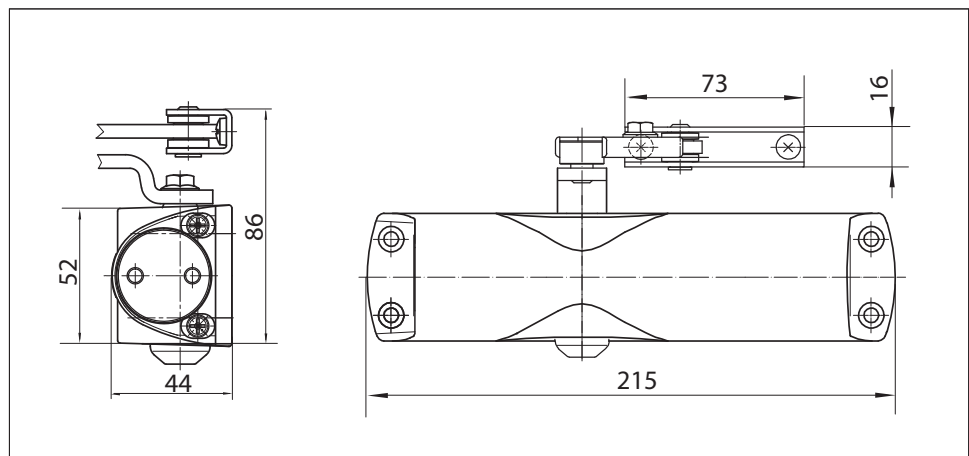
If a door is to be opened 180°,
dimension A = 70 mm and
dimension B = 200 mm
must not be exceeded.

GEZE TS 1000 C**Link arm door closer for single-leaf doors with a leaf width up to 950 mm**

The overhead door closer is suitable for single-leaf doors with a leaf width up to 950 mm. The closing speed and hydraulic latching action can be adjusted. There are two different closing force settings, which can be selected simply by turning the bearing block for the link arm: 'Weak' closing force (size 2 acc. to EN 1154) for door leaf widths up to 850 mm and "strong" closing force (size 3 acc. to EN 1154) for door leaf widths up to 950 mm. The door closer is available with an optional mounting plate. This makes it suitable for left and right single-action doors without the need for conversion.

Special version:

- GEZE TS 1000 C with hold-open linkage featuring adjustable hold-open angle of between 70° and 150°

GEZE TS 1000 C**Application range**

- For internal doors
- For single-action doors, leaf width up to 950 mm
- Compatible with left-hand and right-hand doors without the need for conversion
- Standard mounting on door leaf, hinge side; transom mounting on opposite hinge side also possible

Closer specifications

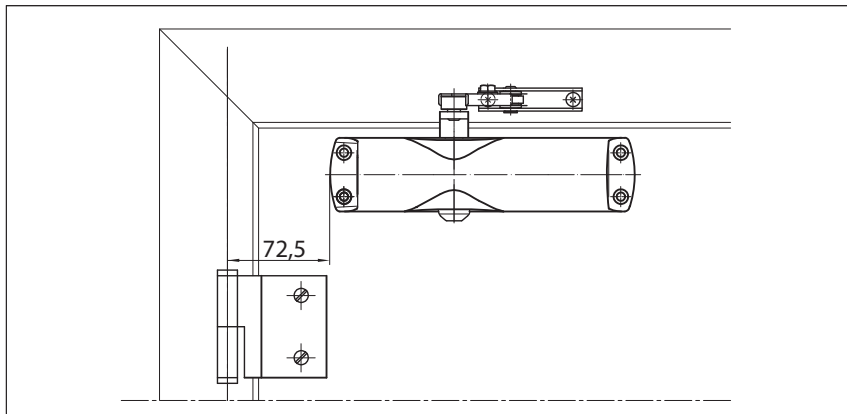
| Product features | GEZE TS 1000 C closer |
|-----------------------------------|---|
| Closing force to EN 1154 | 2/3 |
| Leaf width recommended up to | 950 mm |
| Identical version DIN-L and DIN-R | ● |
| Product tested in acc. with | Door closer tested in acc. with EN 1154 |
| Length | 215 mm |
| Installation depth | 44 mm |
| Height | 52 mm |
| Functions | |
| Adjustable closing force | ● Via mounting |
| Adjustable closing speed | ● |
| Adjustable latching action | ● Via valve |
| Integrated back check | ○ |
| Closing force adjustment position | Mounting position |

● = yes

○ = no

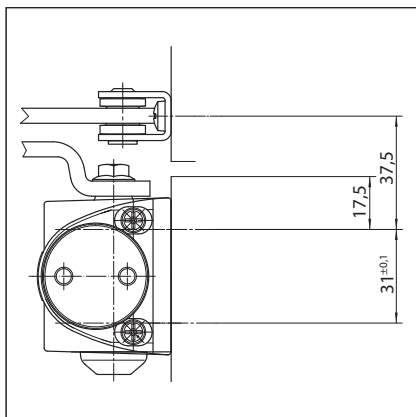
Door leaf mounting/hinge side TS 1000 C

View

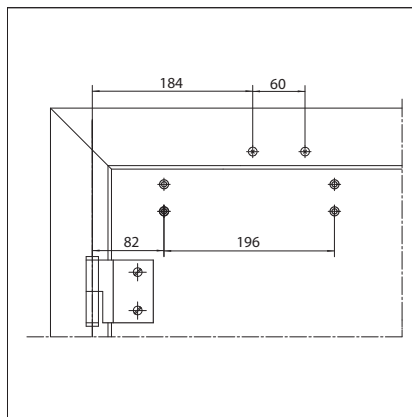


Mounting example for GEZE TS 1000 C

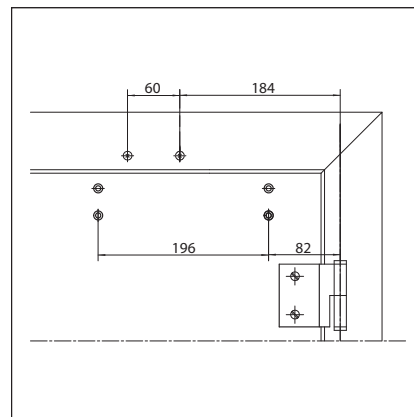
Direct mounting



Cross section = direct mounting

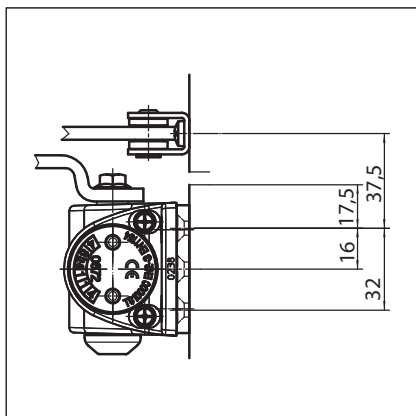


Fitting dimensions for left-hand door

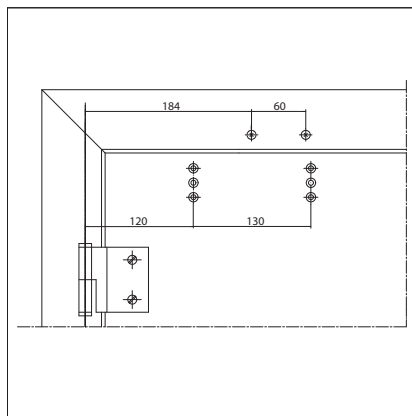


Fitting dimensions for right-hand door

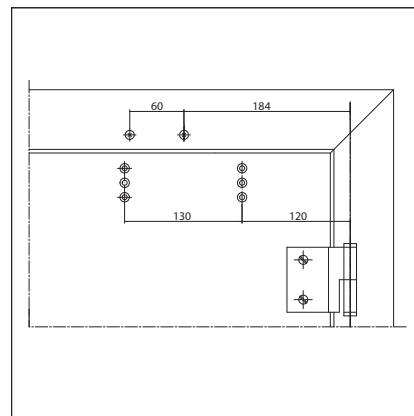
Mounting with mounting plate



Cross section = mounting with mounting plate



Fitting dimensions for left-hand door



Fitting dimensions for right-hand door

GEZE TS 1000 C - Ordering information

| Designation | Version | ID no. |
|--|---------------------------|--------|
| GEZE TS 1000 C closer Size EN 2/3 (without link arm) | Silver-coloured | 114303 |
| | Dark bronze | 114304 |
| | White RAL 9016 | 114305 |
| | Black RAL 9005 | 114306 |
| | Brass-coloured | 114307 |
| | Acc. to RAL ¹⁾ | 114308 |
| GEZE TS 1000 C complete package Size EN 2/3, with hold-open linkage | Silver-coloured | 101771 |
| | Dark bronze | 101772 |
| | White RAL 9016 | 101773 |
| | Black RAL 9005 | 101774 |
| | Brass-coloured | 101777 |
| | Acc. to RAL | 101776 |
| GEZE TS 1000 C complete package Size EN 2/3, with link arm | Silver-coloured | 101765 |
| | Dark bronze | 101766 |
| | White RAL 9016 | 101767 |
| | Black RAL 9005 | 101768 |
| | Brass-coloured | 101770 |
| | Acc. to RAL | 101769 |
| Link arm TS 1500/1000C With mechanical hold-open | Silver-coloured | 101815 |
| | Dark bronze | 101816 |
| | White RAL 9016 | 101817 |
| | Acc. to RAL ¹⁾ | 101818 |
| Link arm TS 1500/1000C Standard | Silver-coloured | 101878 |
| | Dark bronze | 101879 |
| | White RAL 9016 | 101881 |
| | Acc. to RAL ¹⁾ | 101882 |
| Installation material | | |
| Door closer mounting plate For TS 1000 C | Silver-coloured | 072019 |
| | Dark bronze | 072020 |
| | White RAL 9016 | 072021 |
| | Black RAL 9005 | 072022 |

¹⁾ Surcharge for special RAL colours, see general information

GEZE TS 1500

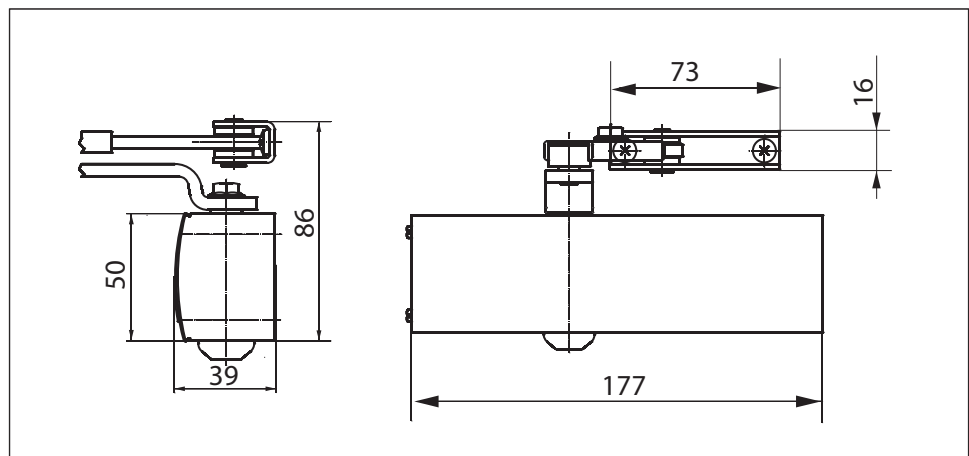
Link arm door closer for single-leaf doors with a leaf width up to 1100 mm

TS 1500 overhead door closer is suitable for single-leaf doors with a leaf width up to 1100 mm. The closing speed and hydraulic latching action can be adjusted. There are two different closing force settings, which can be selected simply by turning the bearing block for the link arm: 'Weak' closing force (size 3 acc. to EN 1154) for door leaf widths up to 950 mm and "strong" closing force (size 4 acc. to EN 1154) for door leaf widths up to 1100 mm. The door closer is available with an optional mounting plate. This makes it suitable for left and right single-action doors without the need for conversion.

Special version:

- GEZE TS 1500 with hold-open linkage featuring adjustable hold-open angle of between 70° and 150°

GEZE TS 1500



Application range

- For internal doors
- For single-action doors, leaf width up to 1100 mm
- Compatible with left-hand and right-hand doors without the need for conversion
- Standard mounting on door leaf, hinge side; transom mounting on opposite hinge side also possible

Closer specifications

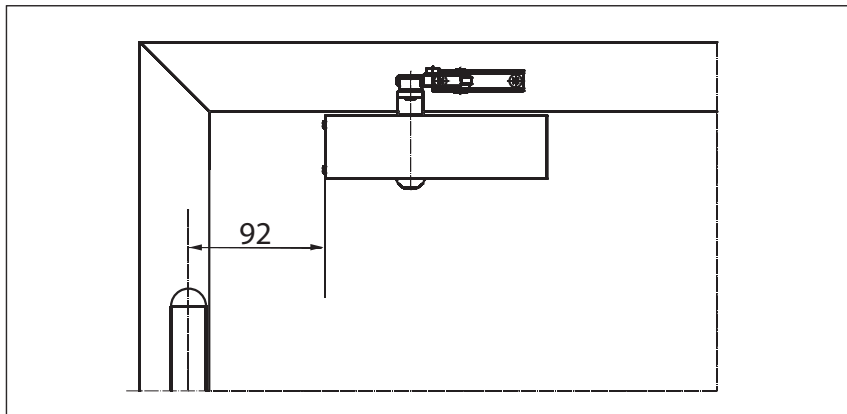
| Product features | GEZE TS 1500 closer |
|-----------------------------------|---|
| Closing force to EN 1154 | 3/4 |
| Leaf width recommended up to | 1100 mm |
| Identical version DIN-L and DIN-R | ● |
| Product tested in acc. with | Door closer tested in acc. with EN 1154 |
| Length | 177 mm |
| Installation depth | 39 mm |
| Height | 50 mm |
| Functions | |
| Adjustable closing force | ● Via mounting |
| Adjustable closing speed | ● |
| Adjustable latching action | ● Via valve |
| Integrated back check | ○ |
| Closing force adjustment position | Mounting position |

● = yes

○ = no

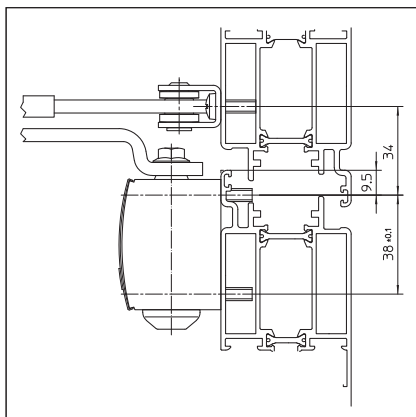
Door leaf mounting/hinge side TS 1500

View

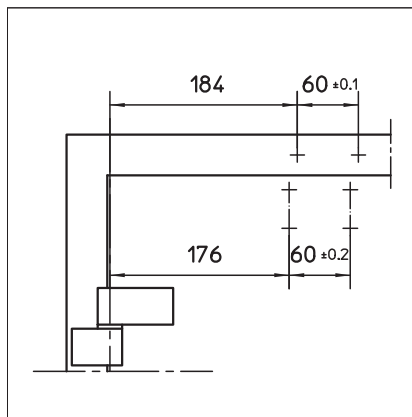


Mounting example for GEZE TS 1500

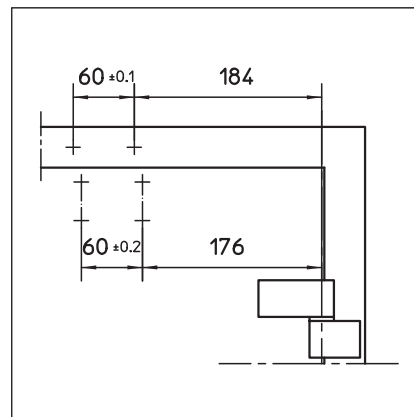
Direct mounting



Cross section = direct mounting

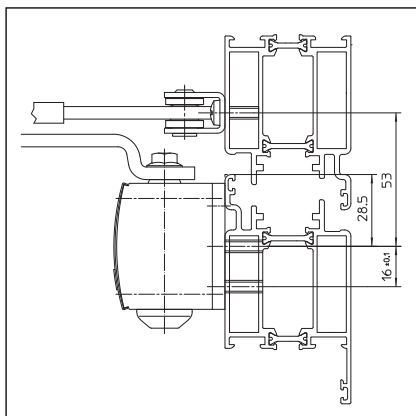


Fitting dimensions for left-hand door

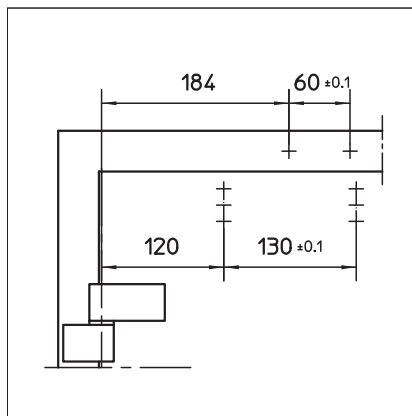


Fitting dimensions for right-hand door

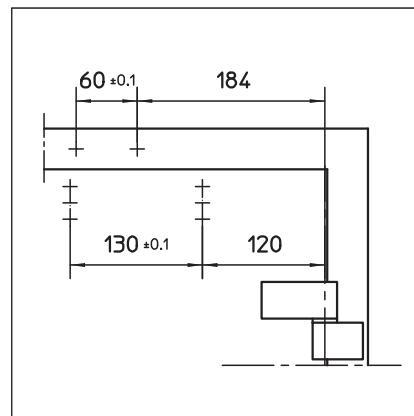
Mounting with mounting plate



Cross section = mounting with mounting plate



Fitting dimensions for left-hand door



Fitting dimensions for right-hand door

GEZE TS 1500 – Ordering information

| Designation | Version | ID no. |
|--|---------------------------|--------|
| GEZE TS 1500 closer Size EN 3/4 (without link arm) | Silver-coloured | 101792 |
| | Dark bronze | 101793 |
| | White RAL 9016 | 101794 |
| | Acc. to RAL ¹⁾ | 101875 |
| Link arm TS 1500/1000 C With mechanical hold-open | Silver-coloured | 101815 |
| | Dark bronze | 101816 |
| | White RAL 9016 | 101817 |
| | Acc. to RAL ¹⁾ | 101818 |
| Link arm TS 1500/1000 C Standard | Silver-coloured | 101878 |
| | Dark bronze | 101879 |
| | White RAL 9016 | 101881 |
| | Acc. to RAL ¹⁾ | 101882 |
| Installation material | | |
| Door closer mounting plate For TS 1500 | Silver-coloured | 029682 |
| | Dark bronze | 029683 |
| | White RAL 9016 | 029685 |
| | Acc. to RAL ¹⁾ | 029686 |
| Accessories | | |
| Door closer cover cap For TS 1500, only suitable for door leaf installation | Silver-coloured | 080147 |
| | Dark bronze | 080148 |
| | White RAL 9016 | 080149 |
| | Acc. to RAL | 080150 |

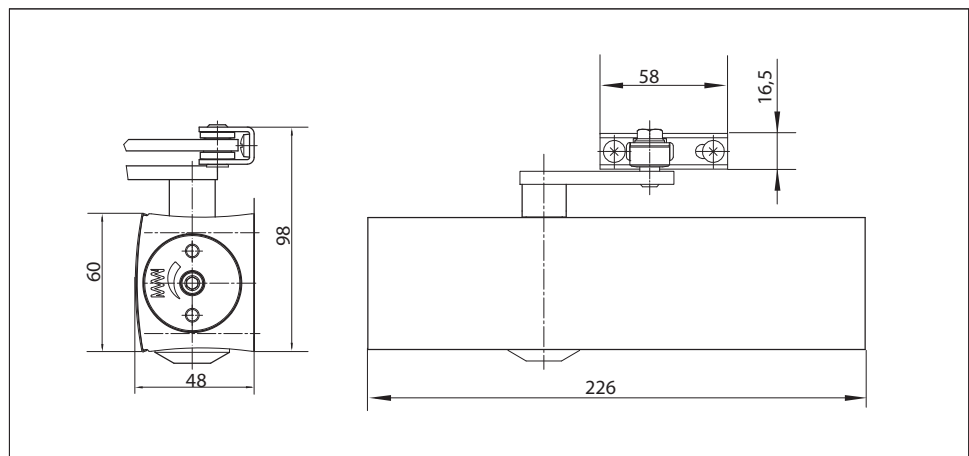
¹⁾ Surcharge for special RAL colours, see general information

GEZE TS 2000 NV**Link arm door closer for single-leaf doors with a leaf width up to 1100 mm**

TS 2000 NV overhead door closer is approved for use with left and right single-action doors with leaf widths up to 1100 mm (without any need for conversion) and for use on fire and smoke doors. The closing force to DIN EN 1154 size 2-4 is infinitely variable and is adjusted at the side. The closing speed and latching action can be conveniently adjusted from the front.

Special versions:

- GEZE TS 2000 NV BC
With hydraulic back check that can be adjusted from the front
- GEZE TS 2000 NV/NV BC with hold-open linkage
With adjustable hold-open angle of between 70° and 150°

GEZE TS 2000 NV**Application range**

- For single-action doors, leaf width up to 1100 mm
- Compatible with left-hand and right-hand doors without the need for conversion
- For fire and smoke doors (door closers with mounting plate)
- Standard mounting on door leaf, hinge side; transom mounting on opposite hinge side also possible
- Can be installed on door leaf on opposite hinge side with parallel arm mounting

GEZE SYSTEM TS 4000 / TS 2000 / TS 1500

Closer specifications

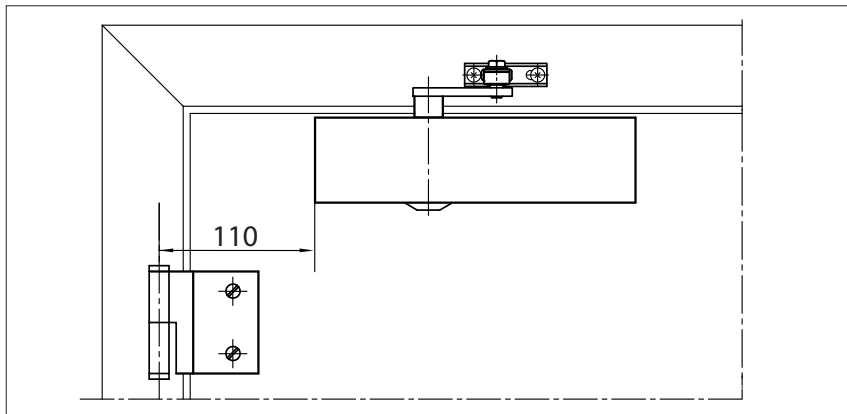
| Product features | GEZE TS 2000 NV closer | GEZE TS 2000 NV BC closer |
|---|---|-------------------------------|
| Closing force to EN 1154 | 2 - 4 | |
| Leaf width recommended up to | 1100 mm | |
| Identical version DIN-L and DIN-R | ● | ● |
| Product tested in acc. with | Door closer tested in acc. with EN 1154 | |
| Suitable for fire and smoke doors | ● | ● |
| Mounting plate with hole pattern acc. to EN 1154 Supplement 1 | ● | ● |
| Length | 226 mm | |
| Installation depth | 48 mm | |
| Height | 60 mm | |
| | | |
| Functions | | |
| Adjustable closing force | ● Infinitely variable | |
| Adjustable closing speed | ● | ● |
| Adjustable latching action | ● Via valve | |
| Integrated back check | ○ | Yes, hydraulically adjustable |
| Closing force adjustment position | On the side | |
| Thermo-constant valves | ● | ● |

● = yes

○ = no

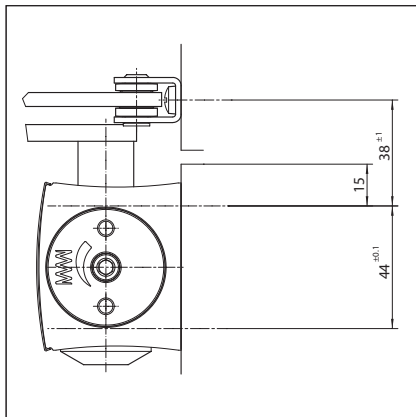
Door leaf mounting/hinge side TS 2000 NV/NV BC

View

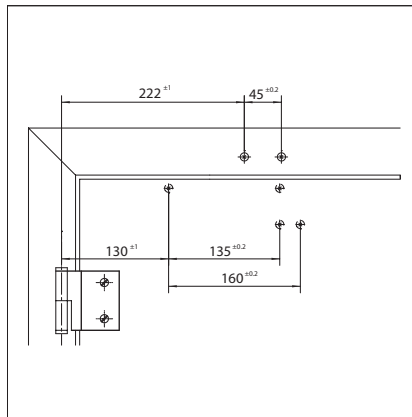


Mounting example for GEZE TS 2000 NV/NV BC

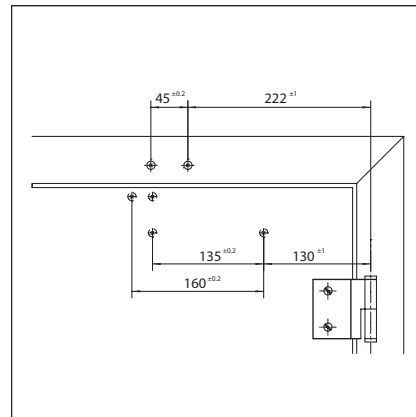
Direct mounting



Cross section = direct mounting

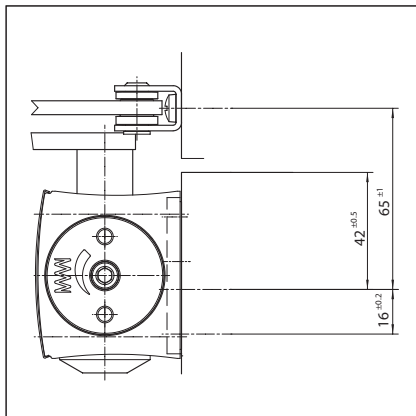


Fitting dimensions for left-hand door

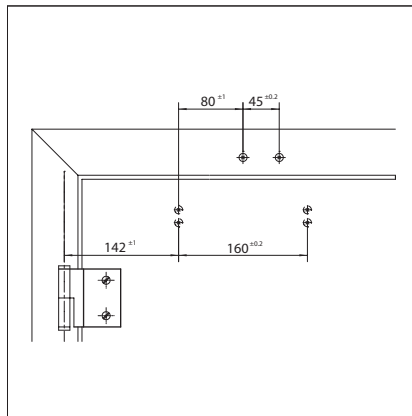


Fitting dimensions for right-hand door

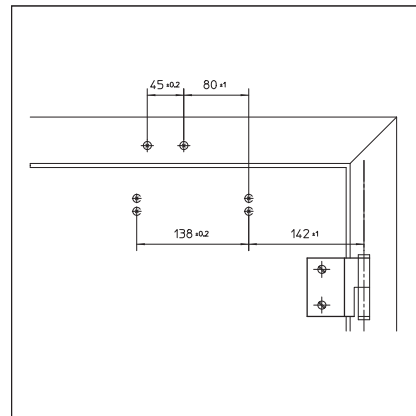
Mounting with mounting plate



Cross section = mounting with mounting plate



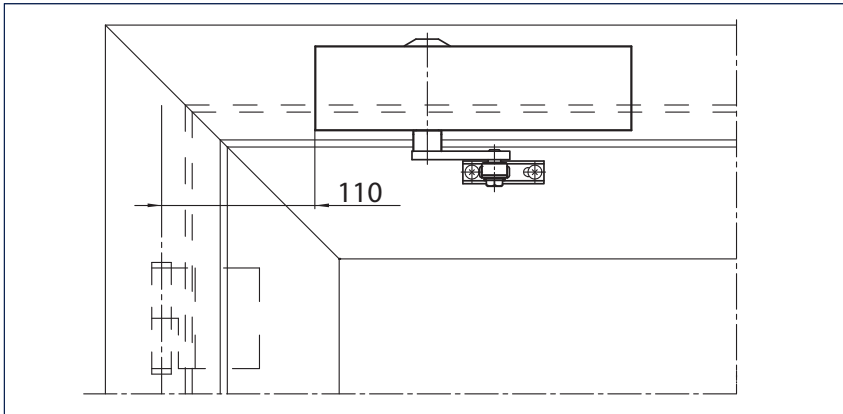
Fitting dimensions for left-hand door



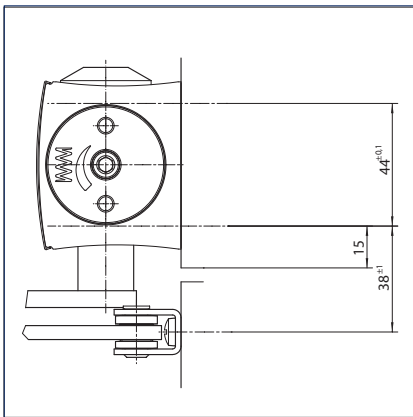
Fitting dimensions for right-hand door

Transom mounting/opposite hinge side TS 2000 NV/NV BC

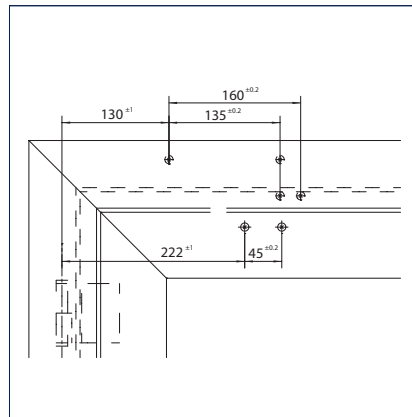
View



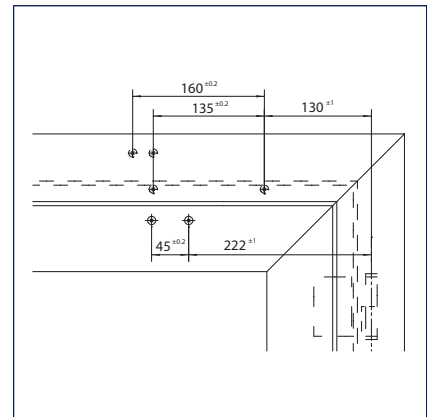
Mounting example for GEZE TS 2000 NV/NV BC

Direct mounting

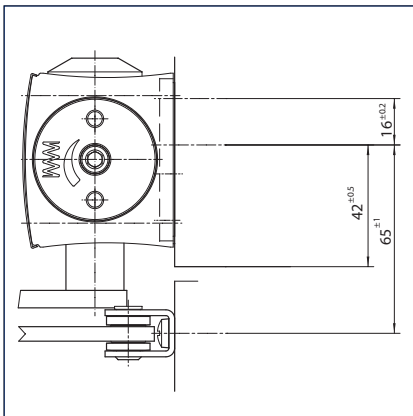
Cross section = direct mounting



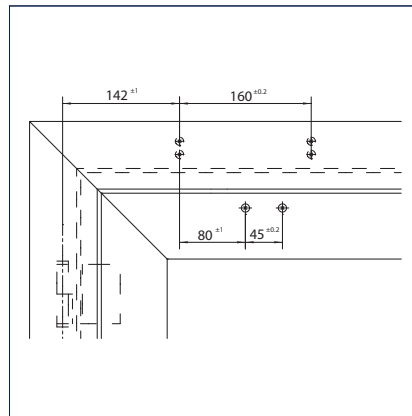
Fitting dimensions for right-hand door



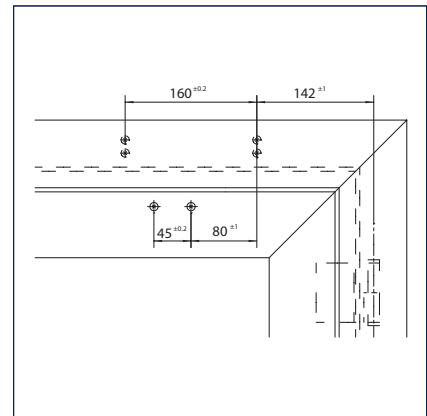
Fitting dimensions for left-hand door

Mounting with mounting plate

Cross section = mounting with mounting plate



Fitting dimensions for right-hand door



Fitting dimensions for left-hand door

GEZE TS 2000 NV - Ordering information

| Designation | Ausführung | ID no. |
|---|--------------------------------------|--------|
| GEZE TS 2000 NV closer Size EN 2-4 (without link arm) | Silver-coloured | 128885 |
| | Dark bronze | 128886 |
| | White RAL 9016 | 128887 |
| | Acc. to RAL ²⁾ | 128888 |
| GEZE TS 2000 NV BC closer Size EN 2-4 with back check (without link arm) | Silver-coloured | 124944 |
| | Dark bronze | 124945 |
| | White RAL 9016 | 124946 |
| | Acc. to RAL ²⁾ | 124947 |
| Link arm TS 4000/2000 ³⁾ With mechanical hold-open | Silver-coloured | 102454 |
| | Dark bronze | 102455 |
| | White RAL 9016 | 102456 |
| | Acc. to RAL ²⁾ | 102457 |
| Link arm TS 4000/2000 With mechanical hold-open that can be switched on and off | Silver-coloured | 102445 |
| | Dark bronze | 102446 |
| | White RAL 9016 | 102447 |
| | Acc. to RAL ²⁾ | 102448 |
| Link arm TS 4000/2000 Extended, for transom mounting with a soffit depth of 70-170 mm | Silver-coloured | 102431 |
| | Dark bronze | 102432 |
| | White RAL 9016 | 102433 |
| | Acc. to RAL ²⁾ | 102434 |
| Link arm TS 4000/2000 Standard | Silver-coloured | 102421 |
| | Dark bronze | 102422 |
| | White RAL 9016 | 102423 |
| | Stainless steel effect ¹⁾ | 102426 |
| | Acc. to RAL ²⁾ | 102425 |
| Installation material | | |
| Spindle extension for TS 4000/TS 2000 Crown type connection | 10 mm Galvanised | 103548 |
| | 10 mm Black | 103677 |
| | 15 mm Galvanised | 103549 |
| | 15 mm Black | 103678 |
| | 20 mm Galvanised | 103550 |
| | 20 mm Black | 103679 |
| Door closer drilling template For TS 5000/4000/3000/2000 | | 053134 |
| Glass clamping plate for door closer For TS 3000/TS 2000NV | Silver-coloured | 014835 |
| | Dark bronze | 014836 |
| | White RAL 9016 | 014843 |
| | nach RAL ²⁾ | 014845 |
| All-glass door mounting and counter plate For TS 3000/TS 2000NV | Silver-coloured | 090259 |
| Link arm mounting plate For TS 4000/2000, with narrow rebates | Silver-coloured | 057109 |
| | Acc. to RAL ²⁾ | 082506 |
| Link arm mounting plate For TS 4000/2000, with parallel arm mounting | Silver-coloured | 053318 |
| | Dark bronze | 053319 |
| | Acc. to RAL ²⁾ | 027460 |
| Mounting plate for segmental arch door For TS 2000 NV, max. arch height 130 mm | Silver-coloured | 127434 |
| | Acc. to RAL ²⁾ | 127435 |
| Door closer mounting plate For TS 2000 NV & NV BC with hole pattern acc. to DIN EN 1154 Supplement 1 | | 126234 |
| Lintel casing bracket for transom mounting opposite hinge side For TS 2000 NV | Silver-coloured | 127432 |

GEZE SYSTEM TS 4000 / TS 2000 / TS 1500

Accessories

Door closer cover cap

For TS 3000/TS 2000, only suitable for door leaf installation

Silver-coloured 013487

Dark bronze 014849

White RAL 9016 014855

Brass 072770

Stainless steel 072769

Acc. to RAL ²⁾ 014856

1) Only suitable for dry rooms

2) Surcharge for special RAL colours, see general information

3) Not approved for fire and smoke doors in Germany

GEZE TS 2000 V

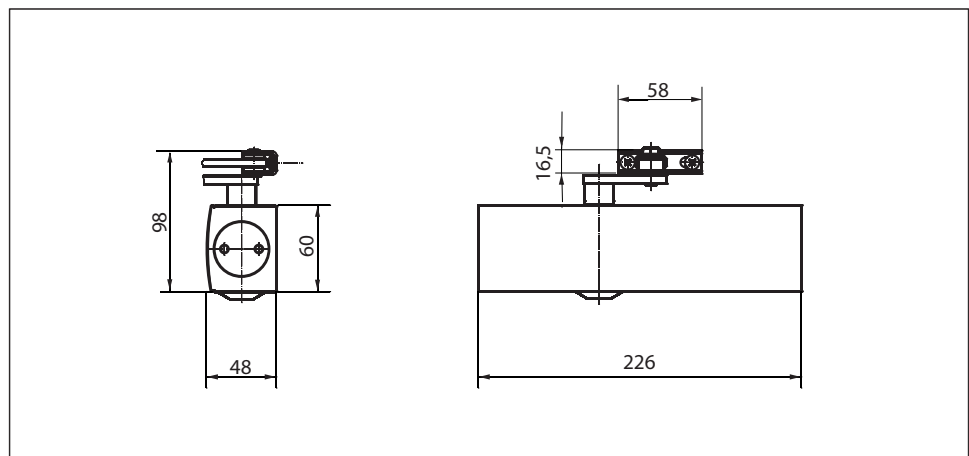
Link arm door closer for single-leaf doors with a leaf width up to 1250 mm

TS 2000 V overhead door closer is suitable for single-leaf doors with a leaf width up to 1250 mm. The closing force is variable in accordance with DIN EN 1154, size 2/4/5 (closing force is varied by changing the mounting position, but same size of closer is used in all cases). The closing speed can be conveniently adjusted from the front and the latching action is adjusted by means of the link arm. The door closer is available with an optional mounting plate. This makes it suitable for left and right single-action doors without the need for conversion.

Special versions:

- GEZE TS 2000 V BC
With hydraulic latching action that can be adjusted from the front and fixed back check setting
- GEZE TS 2000 V with hold-open linkage
With adjustable hold-open angle of between 70° and 150°

GEZE TS 2000 V



Application range

- For single-action doors, leaf width up to 1250 mm
- Compatible with left-hand and right-hand doors without the need for conversion
- Standard mounting on door leaf, hinge side; transom mounting on opposite hinge side also possible
- Can be installed on door leaf on opposite hinge side with parallel arm mounting

Closer specifications

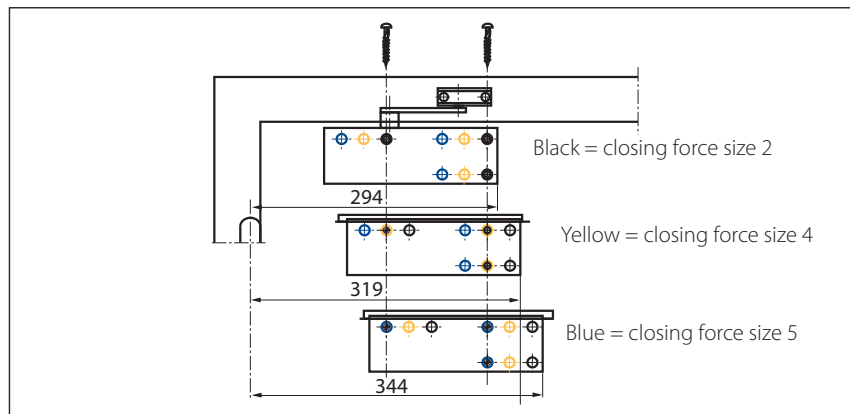
| Product features | GEZE TS 2000 V closer | GEZE TS 2000 VBC closer |
|-----------------------------------|---|-------------------------|
| Closing force to EN 1154 | 2/4/5 | |
| Leaf width recommended up to | 1250 mm | |
| Identical version DIN-L and DIN-R | ● | ● |
| Product tested in acc. with | Door closer tested in acc. with EN 1154 | |
| Length | 226 mm | |
| Installation depth | 48 mm | |
| Height | 60 mm | |
| | | |
| Functions | | |
| Adjustable closing force | Yes, via mounting | |
| Adjustable closing speed | ● | ● |
| Adjustable latching action | ● Via link arm | ● Via valve |
| Integrated back check | ○ | ● Hydraulic, fixed |
| Closing force adjustment position | Mounting position | |
| Thermo-constant valves | ● | ● |

● = yes

○ = no

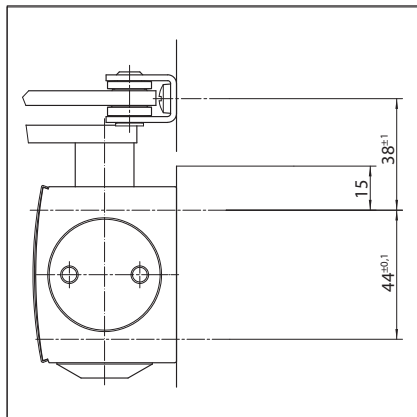
Door leaf mounting/hinge side TS 2000 V/V BC

View

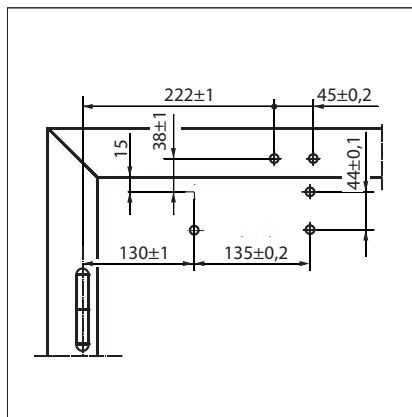


Mounting example for GEZE TS 2000 V/V BC (closing force EN 2/4/5)

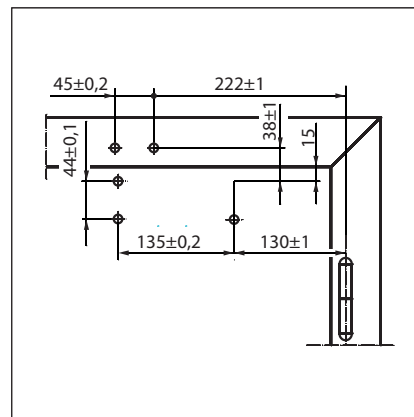
Direct mounting



Cross section = direct mounting

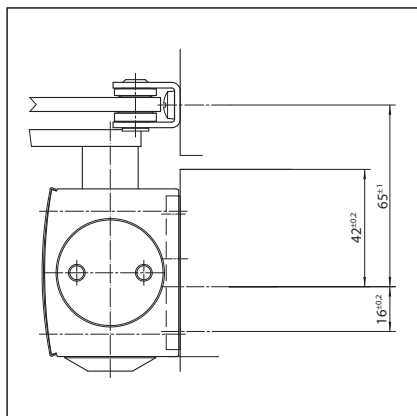


Fitting dimensions for left-hand door

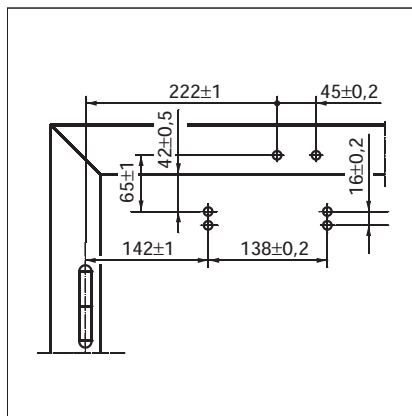


Fitting dimensions for right-hand door

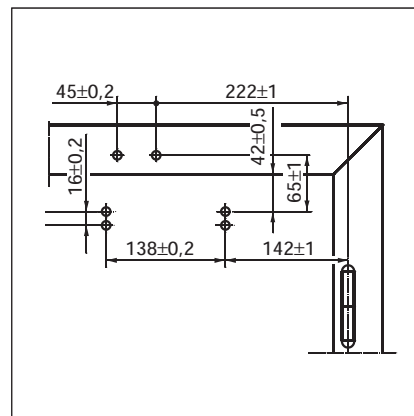
Mounting with mounting plate



Cross section = mounting with mounting plate



Fitting dimensions for left-hand door



Fitting dimensions for right-hand door

GEZE TS 2000 V – Ordering information

| Designation | Version | ID no. |
|--|--------------------------------------|--------|
| GEZE TS 2000 V closer Size EN 2/4/5 (without link arm) | Silver-coloured | 103386 |
| | Dark bronze | 103387 |
| | White RAL 9016 | 103388 |
| | Acc. to RAL ²⁾ | 103389 |
| GEZE TS 2000 VBC closer Size EN 2/4/5 with back check (without link arm) | Silver-coloured | 103392 |
| | Dark bronze | 103393 |
| | White RAL 9016 | 103394 |
| | Acc. to RAL ²⁾ | 103406 |
| Link arm TS 4000/2000 ³⁾ With mechanical hold-open | Silver-coloured | 102454 |
| | Dark bronze | 102455 |
| | White RAL 9016 | 102456 |
| | Acc. to RAL ²⁾ | 102457 |
| Link arm TS 4000/2000 With mechanical hold-open that can be switched on and off | Silver-coloured | 102445 |
| | Dark bronze | 102446 |
| | White RAL 9016 | 102447 |
| | Acc. to RAL ²⁾ | 102448 |
| Link arm TS 4000/2000 Extended, for transom mounting with a soffit depth of 70-170 mm | Silver-coloured | 102431 |
| | Dark bronze | 102432 |
| | White RAL 9016 | 102433 |
| | Acc. to RAL ²⁾ | 102434 |
| Link arm TS 4000/2000 Standard | Silver-coloured | 102421 |
| | Dark bronze | 102422 |
| | White RAL 9016 | 102423 |
| | Stainless steel effect ¹⁾ | 102426 |
| Acc. to RAL ²⁾ | 102425 | |
| Installation material | | |
| Spindle extension for TS 4000/TS 2000 Crown type connection | 10 mm Galvanised | 103548 |
| | 10 mm Black | 103677 |
| | 15 mm Galvanised | 103549 |
| | 15 mm Black | 103678 |
| | 20 mm Galvanised | 103550 |
| | 20 mm Black | 103679 |
| Door closer drilling template For TS 5000/4000/3000/2000 | | 053134 |
| Glass clamping plate for door closer For TS 2000 V | Silver-coloured | 055773 |
| | Dark bronze | 055774 |
| | Acc. to RAL | 009499 |
| | Acc. to RAL ²⁾ | 009500 |
| Link arm mounting plate For TS 4000/2000, with narrow rebates | Silver-coloured | 057109 |
| | Acc. to RAL ²⁾ | 082506 |
| Link arm mounting plate For TS 4000/2000, with parallel arm mounting | Silver-coloured | 053318 |
| | Dark bronze | 053319 |
| | Acc. to RAL ²⁾ | 027460 |
| Mounting plate for segmental arch door For TS 2000 V, max. arch height 130 mm | Silver-coloured | 059044 |
| | Dark bronze | 059045 |
| Door closer mounting plate For TS 2000 V | | 055756 |
| Lintel casing bracket for transom mounting opposite hinge side For TS 2000 V | Silver-coloured | 055766 |
| | Dark bronze | 055767 |
| | Acc. to RAL ²⁾ | 104450 |

1) Only suitable for dry rooms

2) Surcharge for special RAL colours, see general information

3) Not approved for fire and smoke doors in Germany

Accessories

Door closer cover cap
For TS 3000/TS 2000, only suitable for door leaf installation

| | |
|---------------------------|--------|
| Silver-coloured | 013487 |
| Dark bronze | 014849 |
| White RAL 9016 | 014855 |
| Brass | 072770 |
| Stainless steel | 072769 |
| Acc. to RAL ²⁾ | 014856 |

- 1) Only suitable for dry rooms
2) Surcharge for special RAL colours, see general information
3) Not approved for fire and smoke doors in Germany

GEZE TS 4000

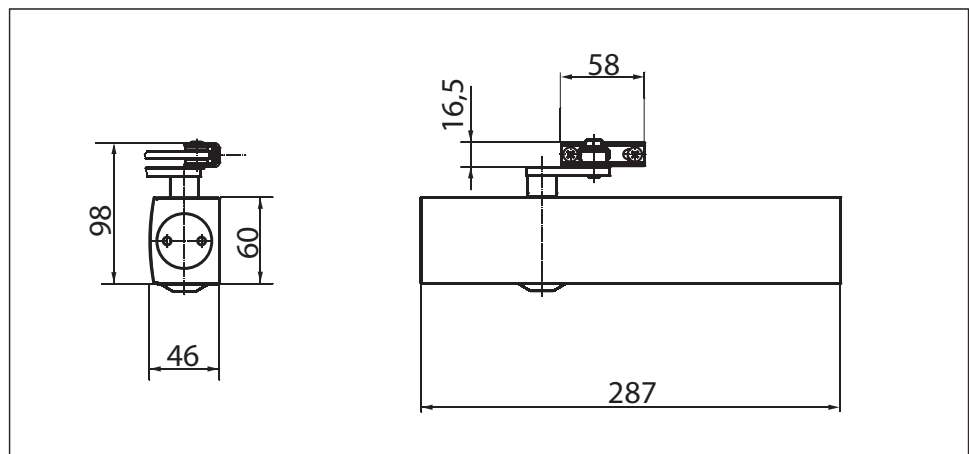
Link arm door closer for single-leaf doors with a leaf width up to 1400 mm

TS 4000 overhead door closer is approved for use with left and right single-action doors with leaf widths up to 1400 mm (without any need for conversion) and for mounting on fire and smoke doors. The closing force to EN 1154 size 1-6 is infinitely variable from the front and is easy to monitor thanks to the optical size indicator. The back check and thermo-constant closing speed are also adjustable from the front; the latching action is adjusted by means of the link arm. The closer features a safety valve for both the open and close directions.

Special versions:

- GEZE TS 4000 with hold-open linkage
Hold-open angle up to 150° (must not be used on fire and smoke doors)
- GEZE TS 4000 S
With delayed closing action of up to 30 seconds, adjustable from the front (delayed closing action not effective with transom mounting on opposite hinge side).
- GEZE TS 4000 door closer, wet room version
Same as TS 4000, but with specially nickel-plated spindle, bearing shells and stainless steel screw accessories for aggressive environments.

GEZE TS 4000



Application range

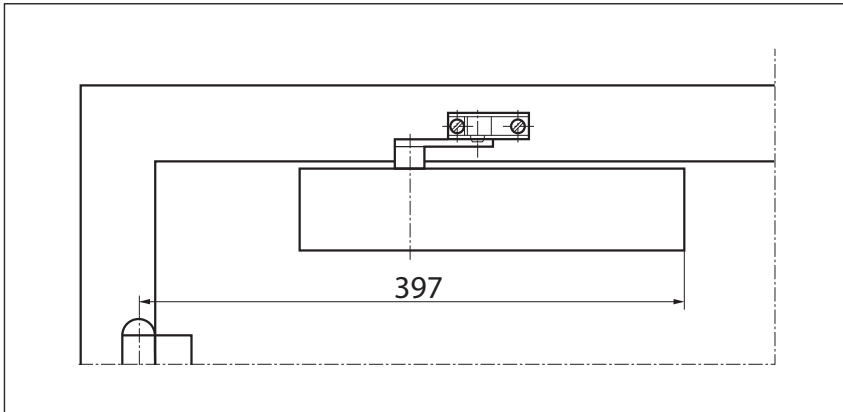
- For single-action doors, leaf width up to 1400 mm
- Compatible with left-hand and right-hand doors without the need for conversion
- For fire and smoke doors (door closers with mounting plate)
- Standard mounting on door leaf, hinge side; transom mounting on opposite hinge side also possible
- Can be installed on door leaf on opposite hinge side with parallel arm mounting

Closer specifications

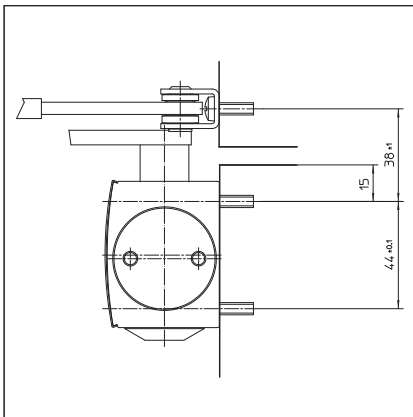
| Product features | GEZE TS 4000 closer | GEZE TS 4000 S closer |
|---|---|-----------------------|
| Closing force to EN 1154 | 1 - 6 | |
| Leaf width recommended up to | 1400 mm | |
| Identical version DIN-L and DIN-R | ● | ● |
| Product tested in acc. with | Door closer tested in acc. with EN 1154 | |
| Suitable for fire and smoke doors | ● | ● |
| Mounting plate with hole pattern acc. to EN 1154 Supplement 1 | ● | ● |
| Length | 287 mm | |
| Installation depth | 46 mm | |
| Height | 60 mm | |
| | | |
| Functions | | |
| Adjustable closing force | ● Infinitely variable | |
| Adjustable closing speed | ● | ● |
| Adjustable latching action | ● Via link arm | ● Via valve |
| Integrated back check | ● Hydraulically adjustable | |
| Integrated delayed closing action | | ● |
| Closing force adjustment position | Front | |
| Optical closing force display | ● | ● |
| Safety valve featuring protection against vandalism | ● | ● |
| Thermo-constant valves | ● | ● |

● = yes

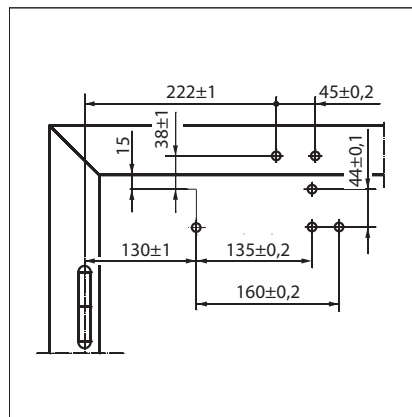
○ = no

Door leaf mounting/hinge side TS 4000**View**

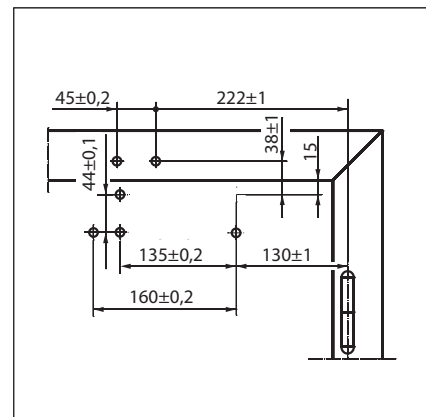
Mounting example for GEZE TS 4000 1-6, TS 4000 S, TS 4000 wet room

Direct mounting

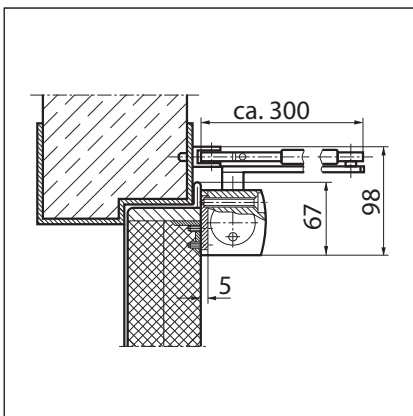
Cross section = direct mounting



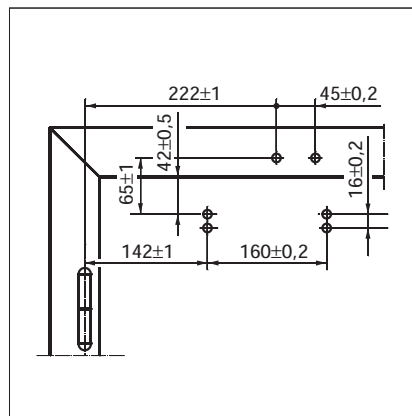
Fitting dimensions for left-hand door



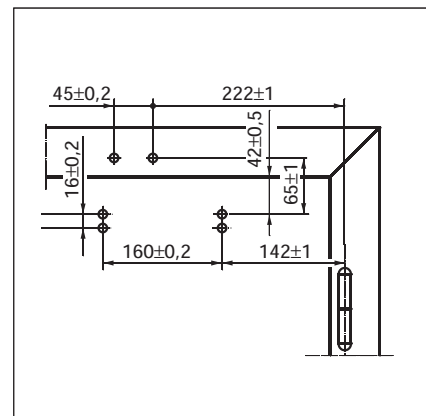
Fitting dimensions for right-hand door

Mounting with mounting plate

Cross section = mounting with mounting plate



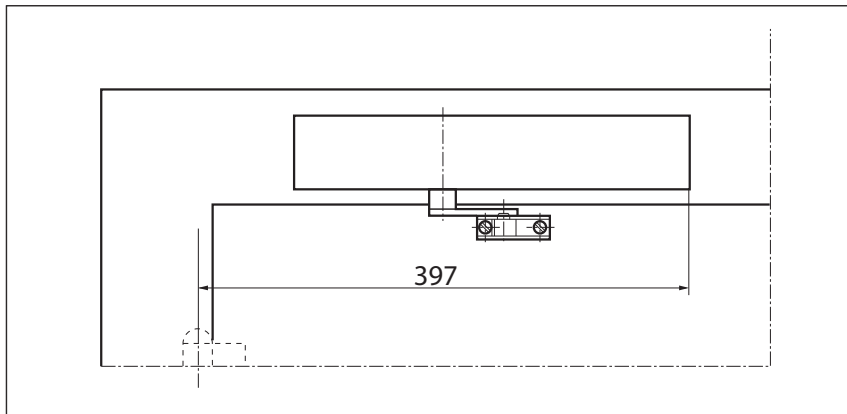
Fitting dimensions for left-hand door



Fitting dimensions for right-hand door

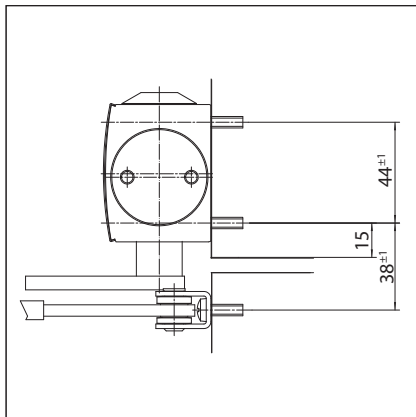
Transom mounting/opposite hinge side TS 4000

View

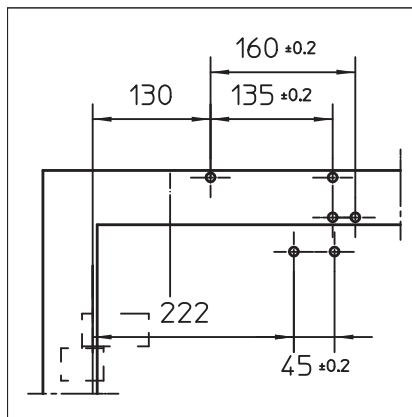


Mounting example for GEZE TS 4000 1-6, TS 4000 S, TS 4000 wet room

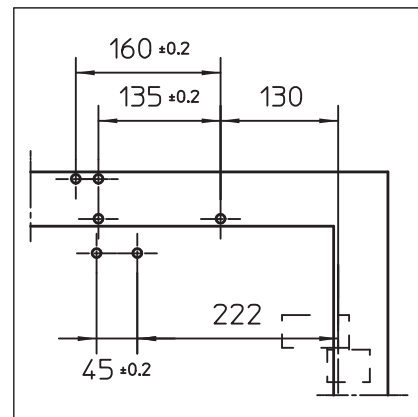
Direct mounting



Cross section = direct mounting

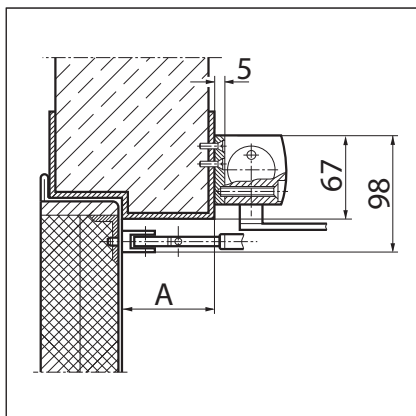


Fitting dimensions for right-hand door



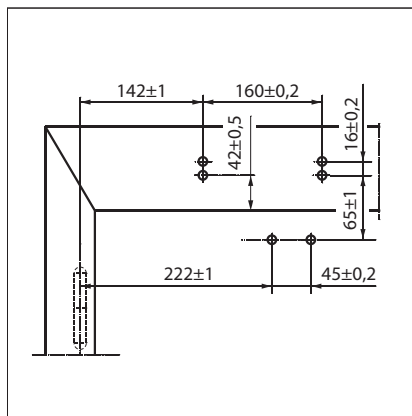
Fitting dimensions for left-hand door

Mounting with mounting plate

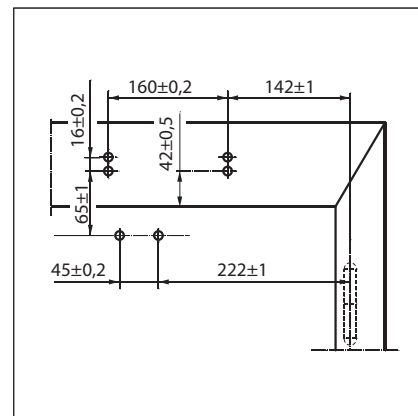


Cross section = mounting with mounting plate

A = max. 70 mm lintel depth with fire and smoke doors



Fitting dimensions for right-hand door



Fitting dimensions for left-hand door

GEZE TS 4000 – Ordering information

| Designation | Version | ID no. |
|--|--------------------------------------|--------|
| GEZE TS 4000 closer Size EN 1-6 with back check (without link arm) | Silver-coloured | 102789 |
| | Dark bronze | 102790 |
| | White RAL 9016 | 102791 |
| | Acc. to RAL ²⁾ | 102792 |
| GEZE TS 4000 S closer Size EN 1-6 with delayed closing action and back check (without link arm) | Silver-coloured | 107745 |
| | Dark bronze | 107746 |
| | White RAL 9016 | 107747 |
| | Acc. to RAL ²⁾ | 107748 |
| Link arm TS 4000/2000 ³⁾ With mechanical hold-open | Silver-coloured | 102454 |
| | Dark bronze | 102455 |
| | White RAL 9016 | 102456 |
| | Acc. to RAL ²⁾ | 102457 |
| Link arm TS 4000/2000 With mechanical hold-open that can be switched on and off | Silver-coloured | 102445 |
| | Dark bronze | 102446 |
| | White RAL 9016 | 102447 |
| | Acc. to RAL ²⁾ | 102448 |
| Link arm TS 4000/2000 Extended, for transom mounting with a soffit depth of 70-170 mm | Silver-coloured | 102431 |
| | Dark bronze | 102432 |
| | White RAL 9016 | 102433 |
| | Acc. to RAL ²⁾ | 102434 |
| Link arm TS 4000/2000 Standard | Silver-coloured | 102421 |
| | Dark bronze | 102422 |
| | White RAL 9016 | 102423 |
| | Stainless steel effect ¹⁾ | 102426 |
| | Acc. to RAL ²⁾ | 102425 |
| GEZE TS 4000 wet room version complete package Size EN 1-6 with back check, special protection against corrosion with stainless steel screw accessories and standard link arm | Silver-coloured | 120104 |

1) Only suitable for dry rooms

2) Surcharge for special RAL colours, see general information

3) Not approved for fire and smoke doors in Germany

Installation material

| | | | |
|---|---------------------------|------------|--------|
| Spindle extension for TS 4000/TS 2000 Crown type connection | 10 mm | Galvanised | 103548 |
| | 10 mm | Black | 103677 |
| | 15 mm | Galvanised | 103549 |
| | 15 mm | Black | 103678 |
| | 20 mm | Galvanised | 103550 |
| | 20 mm | Black | 103679 |
| Door closer drilling template For TS 5000/4000/3000/2000 | | | 053134 |
| Glass clamping plate for door closer For TS 5000/TS 4000 | Silver-coloured | | 057126 |
| | Dark bronze | | 057127 |
| | White RAL 9016 | | 009491 |
| | Acc. to RAL ²⁾ | | 009494 |
| All-glass door mounting and counter plate For TS 5000/TS 4000 | Silver-coloured | | 007923 |
| | Dark bronze | | 007924 |
| | Acc. to RAL ²⁾ | | 007926 |
| Link arm mounting plate For TS 4000/2000, with narrow rebates | Silver-coloured | | 057109 |
| | Acc. to RAL ²⁾ | | 082506 |
| Link arm mounting plate For TS 4000/2000, with parallel arm mounting | Silver-coloured | | 053318 |
| | Dark bronze | | 053319 |
| | Acc. to RAL ²⁾ | | 027460 |
| Mounting plate for segmental arch door For TS 4000, max. arch height 130 mm | Silver-coloured | | 058782 |
| | Dark bronze | | 058783 |
| | Acc. to RAL ²⁾ | | 119472 |
| Door closer mounting plate For TS 5000/4000 with hole pattern acc. to DIN EN 1154 Supplement 1 | Silver-coloured | | 049185 |
| | Dark bronze | | 052351 |
| | White RAL 9016 | | 068627 |
| | Galvanised | | 057956 |
| Lintel casing bracket for transom mounting opposite hinge side For TS 5000/TS 4000 | Acc. to RAL ²⁾ | | 029176 |
| | Silver-coloured | | 049240 |
| | Dark bronze | | 052352 |
| | Acc. to RAL ²⁾ | | 104451 |

Accessories

| | | | |
|--|---------------------------|--|--------|
| Door closer cover cap For TS 5000/TS 4000, only suitable for door leaf installation | Silver-coloured | | 067724 |
| | Dark bronze | | 067725 |
| | White RAL 9016 | | 067726 |
| | Brass | | 072698 |
| | Stainless steel | | 072696 |
| | Acc. to RAL ²⁾ | | 000756 |

1) Only suitable for dry rooms

2) Surcharge for special RAL colours, see general information

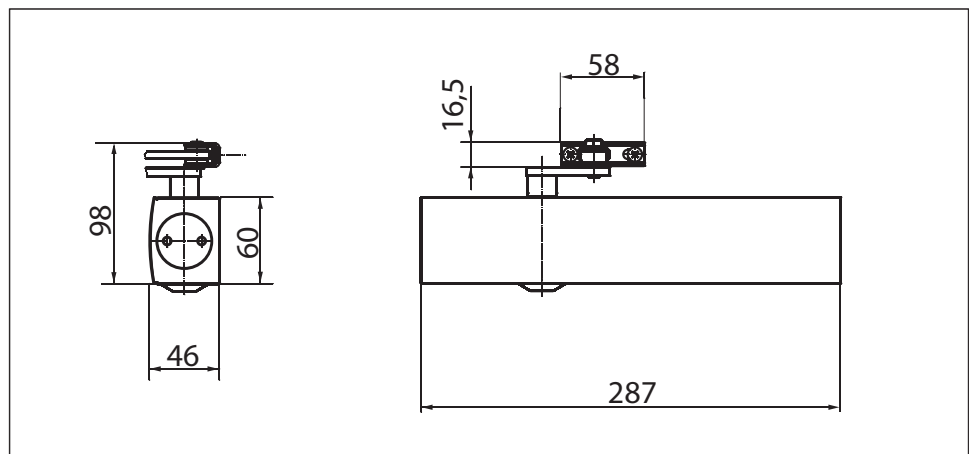
3) Not approved for fire and smoke doors in Germany

GEZE TS 4000 size 5-7**Link arm door closer for single-leaf doors with a leaf width up to 1600 mm**

TS 4000 overhead door closer is approved for use with left and right single-action doors with leaf widths up to 1600 mm (without any need for conversion) and for mounting on fire and smoke doors. The closing force to EN 1154 size 5-7 is infinitely variable from the front and is easy to monitor thanks to the optical size indicator. The back check and thermo-constant closing speed are also adjustable from the front; the latching action is adjusted by means of the link arm. The closer features a safety valve for both the open and close directions.

Special versions:

- GEZE TS 4000 with hold-open linkage
Hold-open angle of up to 150° (must not be used on fire and smoke doors, hold-open mechanism only effective up to size EN 6)

GEZE TS 4000 size 5-7**Application range**

- For single-action doors, leaf width up to 1600 mm
- Compatible with left-hand and right-hand doors without the need for conversion
- For fire and smoke doors (door closers with mounting plate)
- Standard mounting on door leaf, hinge side; transom mounting on opposite hinge side also possible
- Can be installed on door leaf on opposite hinge side with parallel arm mounting

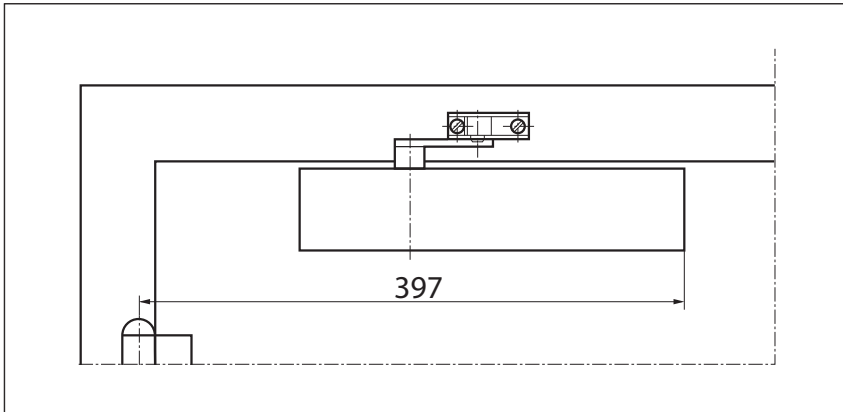
Closer specifications

| Product features | GEZE TS 4000 closer |
|---|---|
| Closing force to EN 1154 | 5 - 7 |
| Leaf width recommended up to | 1600 mm |
| Identical version DIN-L and DIN-R | ● |
| Product tested in acc. with | Door closer tested in acc. with EN 1154 |
| Suitable for fire and smoke doors | ● |
| Mounting plate with hole pattern acc. to EN 1154 Supplement 1 | ● |
| Length | 287 mm |
| Installation depth | 46 mm |
| Height | 60 mm |
| | |
| Functions | |
| Adjustable closing force | ● Infinitely variable |
| Adjustable closing speed | ● |
| Adjustable latching action | ● Via link arm |
| Integrated back check | ● Hydraulically adjustable |
| Closing force adjustment position | Front |
| Optical closing force display | ● |
| Safety valve featuring protection against vandalism | ● |
| Thermo-constant valves | ● |

● = yes
○ = no

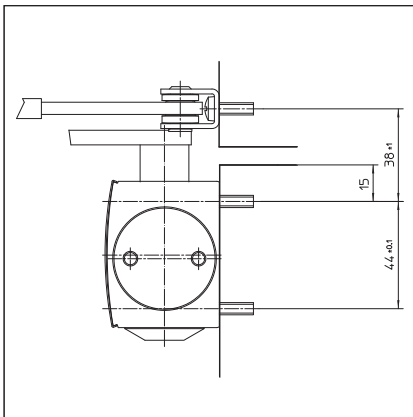
Door leaf mounting/hinge side TS 4000 size 5-7

View

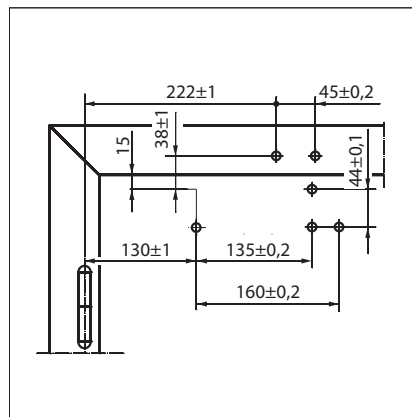


Mounting example for GEZE TS 4000 5-7

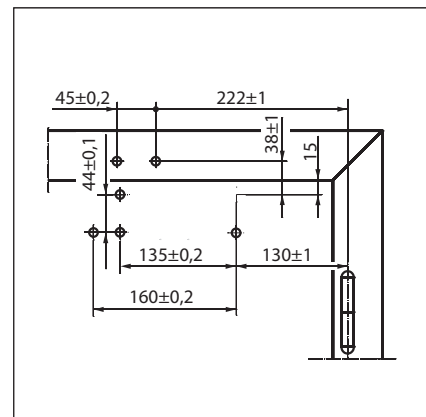
Direct mounting



Cross section = direct mounting

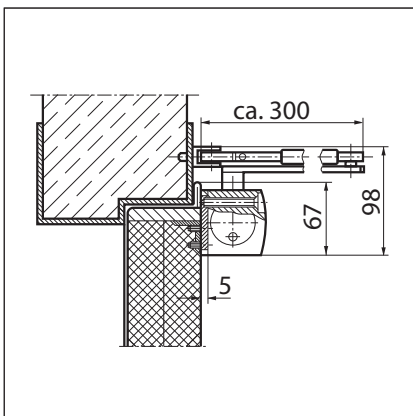


Fitting dimensions for left-hand door

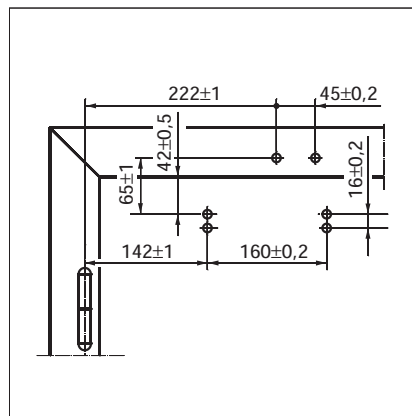


Fitting dimensions for right-hand door

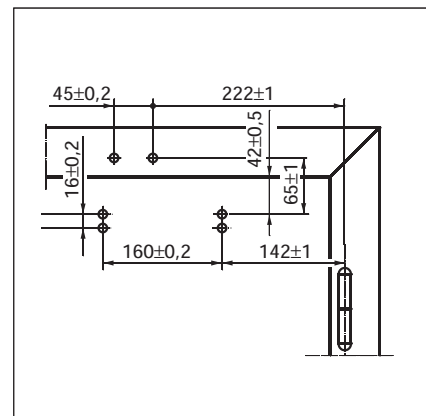
Mounting with mounting plate



Cross section = mounting with mounting plate



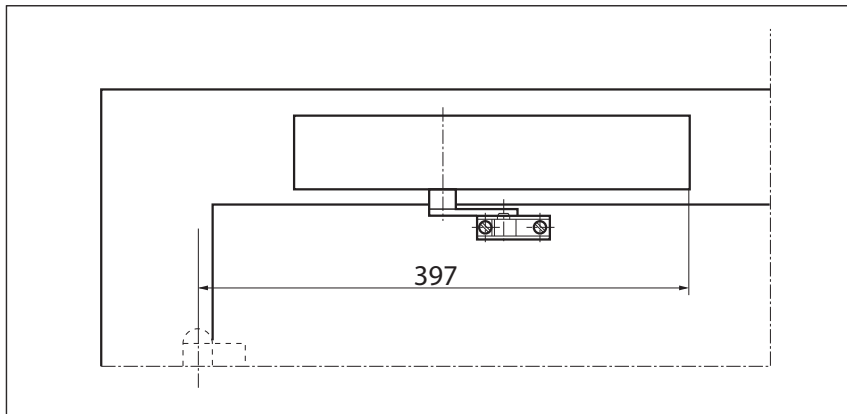
Fitting dimensions for left-hand door



Fitting dimensions for right-hand door

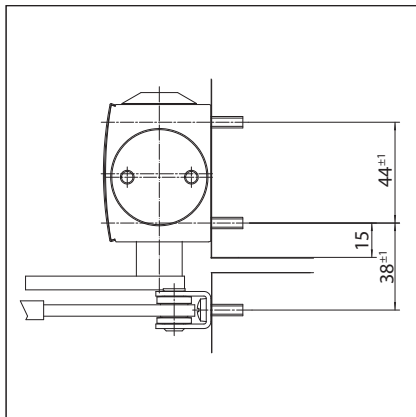
Transom mounting/opposite hinge side TS 4000 size 5-7

View

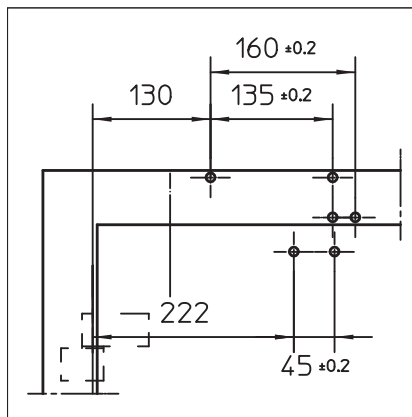


Mounting example for GEZE TS 4000 5-7

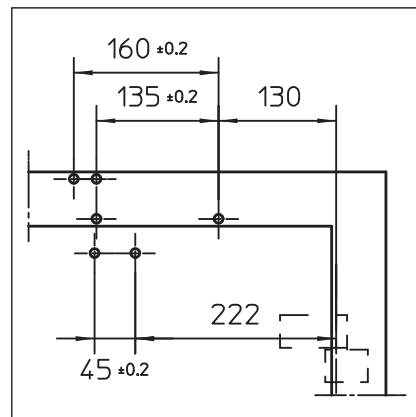
Direct mounting



Cross section = direct mounting

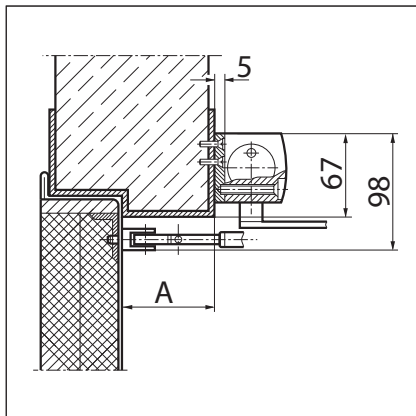


Fitting dimensions for right-hand door

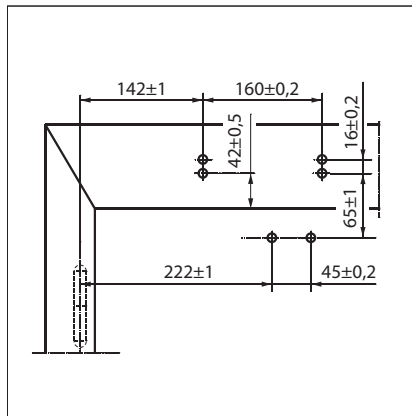


Fitting dimensions for left-hand door

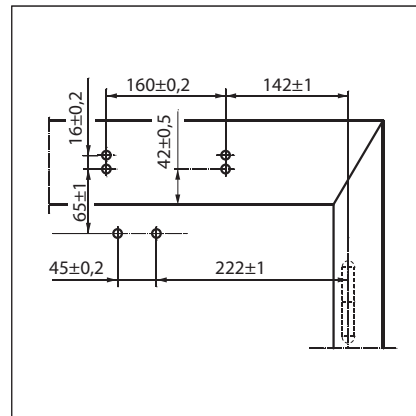
Mounting with mounting plate



Cross section = mounting with mounting plate
 A = max. 70 mm lintel depth with fire and smoke doors



Fitting dimensions for right-hand door



Fitting dimensions for left-hand door

GEZE SYSTEM TS 4000 / TS 2000 / TS 1500

GEZE TS 4000 size 5-7 - Ordering information

| Designation | Version | ID no. |
|---|--------------------------------------|--------|
| GEZE TS 4000 closer | Silver-coloured | 102837 |
| Size EN 5-7 with back check (without link arm) | Acc. to RAL ²⁾ | 102838 |
| Link arm TS 4000/2000 ³⁾ | Silver-coloured | 102454 |
| With mechanical hold-open | Dark bronze | 102455 |
| | White RAL 9016 | 102456 |
| | Acc. to RAL ²⁾ | 102457 |
| Link arm TS 4000/2000 | Silver-coloured | 102445 |
| With mechanical hold-open that can be switched on and off | Dark bronze | 102446 |
| | White RAL 9016 | 102447 |
| | Acc. to RAL ²⁾ | 102448 |
| Link arm TS 4000/2000 | Silver-coloured | 102431 |
| Extended, for transom mounting with a soffit depth of 70-170 mm | Dark bronze | 102432 |
| | White RAL 9016 | 102433 |
| | Acc. to RAL ²⁾ | 102434 |
| Link arm TS 4000/2000 | Silver-coloured | 102421 |
| Standard | Dark bronze | 102422 |
| | White RAL 9016 | 102423 |
| | Stainless steel effect ¹⁾ | 102426 |
| | Acc. to RAL ²⁾ | 102425 |
| Installation material | | |
| Spindle extension for TS 4000/TS 2000 Crown type connection | 10 mm Galvanised | 103548 |
| | 10 mm Black | 103677 |
| | 15 mm Galvanised | 103549 |
| | 15 mm Black | 103678 |
| | 20 mm Galvanised | 103550 |
| | 20 mm Black | 103679 |
| Door closer drilling template For TS 5000/4000/3000/2000 | | 053134 |
| Glass clamping plate for door closer For TS 5000/TS 4000 | Silver-coloured | 057126 |
| | Dark bronze | 057127 |
| | White RAL 9016 | 009491 |
| | Acc. to RAL ²⁾ | 009494 |
| All-glass door mounting and counter plate For TS 5000/TS 4000 | Silver-coloured | 007923 |
| | Dark bronze | 007924 |
| | Acc. to RAL ²⁾ | 007926 |
| Link arm mounting plate For TS 4000/2000, with narrow rebates | Silver-coloured | 057109 |
| | Acc. to RAL ²⁾ | 082506 |
| Link arm mounting plate For TS 4000/2000, with parallel arm mounting | Silver-coloured | 053318 |
| | Dark bronze | 053319 |
| | Acc. to RAL ²⁾ | 027460 |
| Mounting plate for segmental arch door For TS 4000, max. arch height 130 mm | Silver-coloured | 058782 |
| | Dark bronze | 058783 |
| | Acc. to RAL ²⁾ | 119472 |
| Door closer mounting plate For TS 5000/4000 with hole pattern acc. to DIN EN 1154 Supplement 1 | Silver-coloured | 049185 |
| | Dark bronze | 052351 |
| | White RAL 9016 | 068627 |
| | Galvanised | 057956 |
| | Acc. to RAL ²⁾ | 029176 |
| Lintel casing bracket for transom mounting opposite hinge side For TS 5000/TS 4000 | Silver-coloured | 049240 |
| | Dark bronze | 052352 |
| | Acc. to RAL ²⁾ | 104451 |

1) Only suitable for dry rooms

2) Surcharge for special RAL colours, see general information

3) Not approved for fire and smoke doors in Germany

Accessories

Door closer cover cap
For TS 5000/TS 4000, only suitable for door leaf installation

| | |
|---------------------------|--------|
| Silver-coloured | 067724 |
| Dark bronze | 067725 |
| White RAL 9016 | 067726 |
| Brass | 072698 |
| Stainless steel | 072696 |
| Acc. to RAL ²⁾ | 000756 |

1) Only suitable for dry rooms
2) Surcharge for special RAL colours, see general information
3) Not approved for fire and smoke doors in Germany

GEZE TS 4000 E

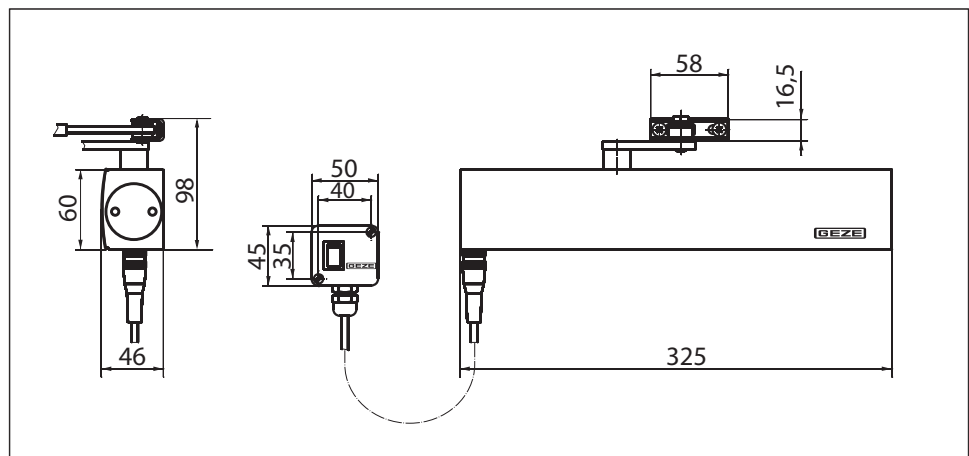
Link arm door closer for single-leaf doors with a leaf width up to 1400 mm featuring electric hold-open

TS 4000 E (24 V DC) overhead door closer, featuring an electric hold-open that is infinitely variable between 80° and 175° in accordance with EN 1155, is approved for use with left and right single-action doors with a door leaf width up to 1400 mm and for mounting on fire and smoke doors. In the event of a fire or power failure, the hold-open mechanism is activated and the door closes securely. The size 1-6 closing force to EN 1154, with optical size indicator, and the thermo-constant closing speed can be conveniently adjusted from the front; the latching action is adjusted by means of the link arm.

Special version:

- GEZE TS 4000 E/transom mounting on opposite hinge side 24 V DC

GEZE TS 4000 E



Application range

- For single-action doors, leaf width up to 1400 mm
- Compatible with left-hand and right-hand doors without the need for conversion
- For fire and smoke doors (door closers with mounting plate)
- Standard mounting on door leaf, hinge side; transom mounting on opposite hinge side also possible
- Transom mounting on hinge side possible with guide rail, closing force EN3, not approved for fire and smoke doors

Closer specifications

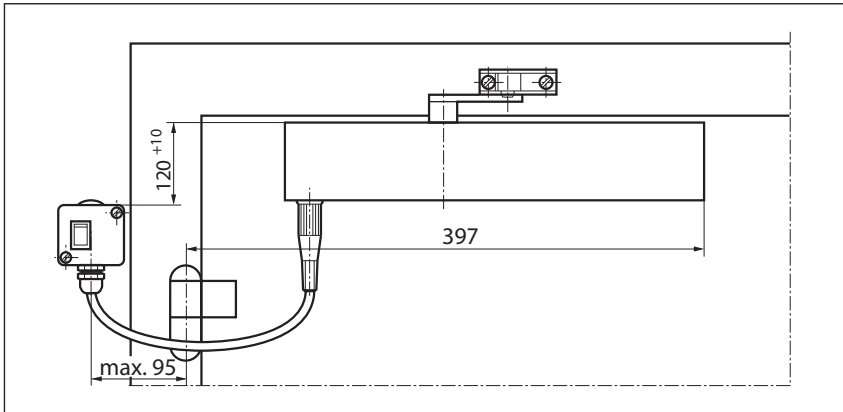
| Product features | GEZE TS 4000 E closer |
|---|--|
| Closing force to EN 1154 | 1 - 6 |
| Leaf width recommended up to | 1400 mm |
| Identical version DIN-L and DIN-R | ● |
| Supply voltage | 24 V DC |
| Enclosure rating IP | IP 43 |
| Product tested in acc. with | Door closer tested in acc. with EN 1154 Hold-open mechanism tested in acc. with EN 1155 |
| Suitable for fire and smoke doors | ● |
| Mounting plate with hole pattern acc. to EN 1154 Supplement 1 | ● |
| Length | 325 mm |
| Installation depth | 46 mm |
| Height | 60 mm |
| Functions | |
| Adjustable closing force | ● Infinitely variable |
| Adjustable closing speed | ● |
| Adjustable latching action | ● Via link arm |
| Integrated back check | ○ |
| Closing force adjustment position | Front |
| Optical closing force display | ● |
| Safety valve featuring protection against vandalism | ● |
| Thermo-constant valves | ● |
| Integrated hold-open mechanism | Electric |
| Hold-open angle | 80°-175° |
| Hold-open mechanism can be overridden | ● |

● = yes

○ = no

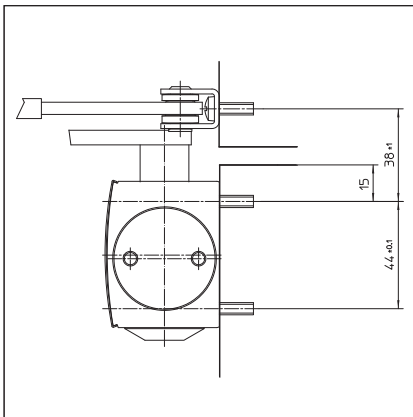
Door leaf mounting/hinge side TS 4000 E

View

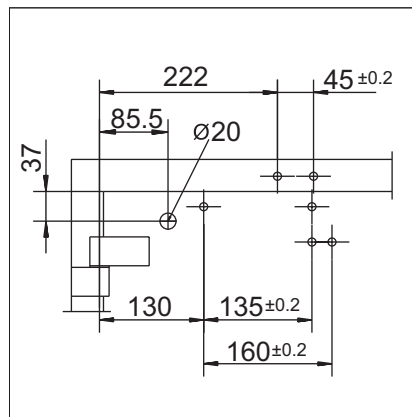


Mounting example for GEZE TS 4000 E

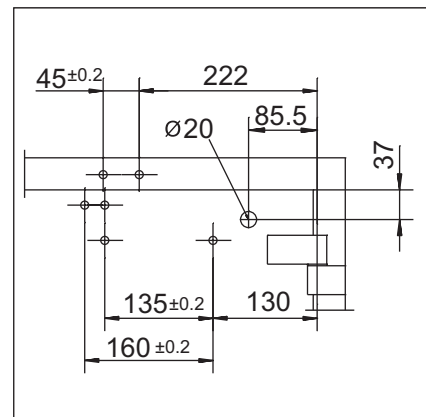
Direct mounting



Cross section = direct mounting

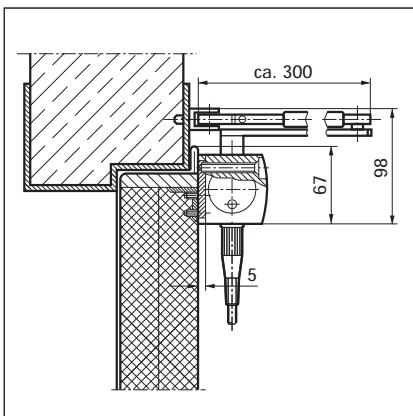


Fitting dimensions for left-hand door

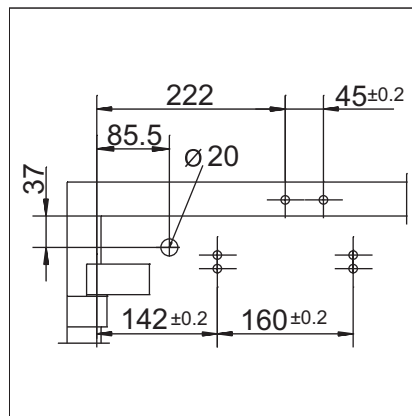


Fitting dimensions for right-hand door

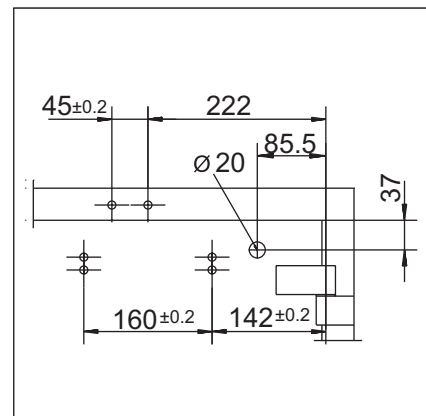
Mounting with mounting plate



Cross section = mounting with mounting plate



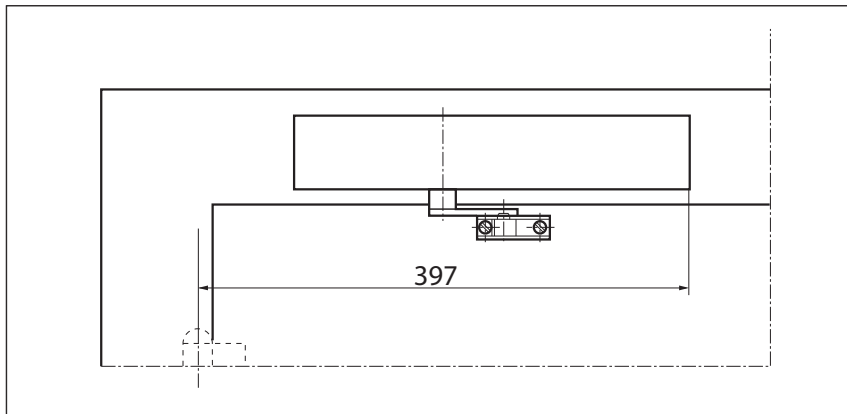
Fitting dimensions for left-hand door



Fitting dimensions for right-hand door

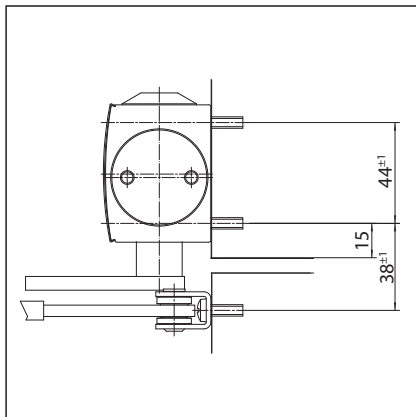
Transom mounting/opposite hinge side TS 4000 E

View

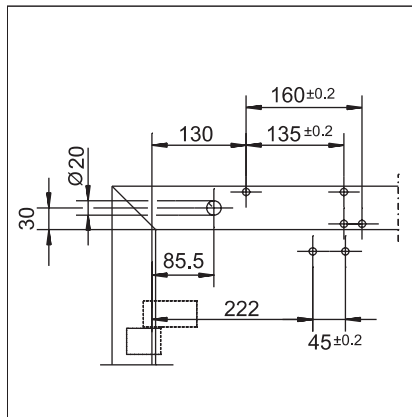


Mounting example for GEZE TS 4000 E

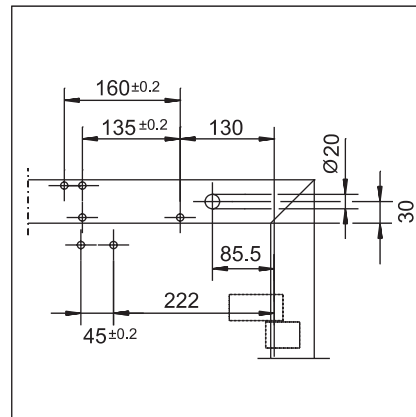
Direct mounting



Cross section = direct mounting

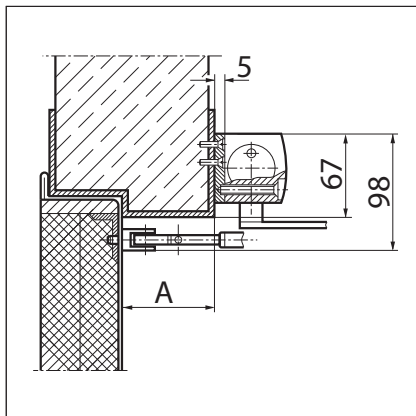


Fitting dimensions for right-hand door

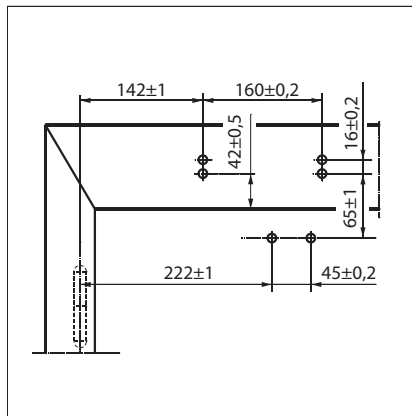


Fitting dimensions for left-hand door

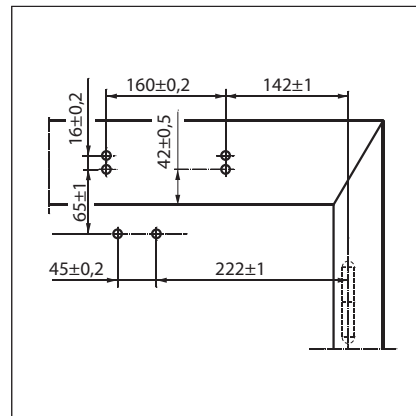
Mounting with mounting plate



Cross section = mounting with mounting plate
 A = max. 70 mm lintel depth with fire and smoke doors



Fitting dimensions for right-hand door



Fitting dimensions for left-hand door

GEZE TS 4000 E - Ordering information

| Designation | Version | ID no. |
|---|--------------------------------------|--------|
| GEZE TS 4000 E closer | Silver-coloured | 105211 |
| Size EN 1-6, door leaf installation on hinge side, featuring electric hold-open and connector box (without link arm) | Acc. to RAL ²⁾ | 105212 |
| GEZE TS 4000 E KM BG closer | Silver-coloured | 105213 |
| Size EN 1-6, transom mounting on opposite hinge side, featuring electric hold-open (without link arm) | Acc. to RAL ²⁾ | 105214 |
| GEZE TS 4000 E KM BS closer ³⁾ | Silver-coloured | 105235 |
| Size EN 1-3, transom mounting on hinge side, featuring electric hold-open (without guide rail) | Acc. to RAL ²⁾ | 105236 |
| Guide rail TS 4000 E/R | Silver-coloured | 102527 |
| With lever, designed for transom mounting on hinge side | Acc. to RAL ²⁾ | 102530 |
| Link arm TS 4000/2000 Extended, for transom mounting with a soffit depth of 70-170 mm | Silver-coloured | 102431 |
| | Dark bronze | 102432 |
| | White RAL 9016 | 102433 |
| | Acc. to RAL ²⁾ | 102434 |
| Link arm TS 4000/2000 Standard | Silver-coloured | 102421 |
| | Dark bronze | 102422 |
| | White RAL 9016 | 102423 |
| | Stainless steel effect ¹⁾ | 102426 |
| | Acc. to RAL ²⁾ | 102425 |
| Installation material | | |
| Spindle extension for TS 4000/TS 2000 Crown type connection | 10 mm Galvanised | 103548 |
| | 10 mm Black | 103677 |
| | 15 mm Galvanised | 103549 |
| | 15 mm Black | 103678 |
| | 20 mm Galvanised | 103550 |
| | 20 mm Black | 103679 |
| Door closer drilling template For TS 5000/4000/3000/2000 | | 053134 |
| Link arm mounting plate For TS 4000/2000, with narrow rebates | Silver-coloured | 057109 |
| | Acc. to RAL ²⁾ | 082506 |
| Link arm mounting plate For TS 4000/2000, with parallel arm mounting | Silver-coloured | 053318 |
| | Dark bronze | 053319 |
| | Acc. to RAL ²⁾ | 027460 |
| Door closer mounting plate For TS 5000 EFS/RFS/EHY / 4000 E with hole pattern acc. to DIN EN 1154 Supplement 1 | Silver-coloured | 059107 |
| | Acc. to RAL ²⁾ | 100044 |
| Accessories | | |
| GEZE smoke switch control unit RSZ 6 Approved for all GEZE hold-open mechanisms | Silver-coloured | 099851 |
| | Dark bronze | 099857 |
| | White RAL 9016 | 099858 |
| | Stainless steel effect ¹⁾ | 099856 |
| | Acc. to RAL ²⁾ | 099859 |
| GEZE smoke switch RS 5 For ceiling and lintel mounting | Silver-coloured | 027052 |
| | Dark bronze | 028939 |
| | White RAL 9016 | 028940 |
| | Stainless steel effect ¹⁾ | 028942 |
| | Acc. to RAL ²⁾ | 028941 |
| GEZE circuit breaker Concealed version, for manual release of electrically controlled door closers and retention magnets | Alpine white | 116266 |
| Surface-mounted socket Package | | 120503 |

1) Only suitable for dry rooms

2) Surcharge for special RAL colours, see general information

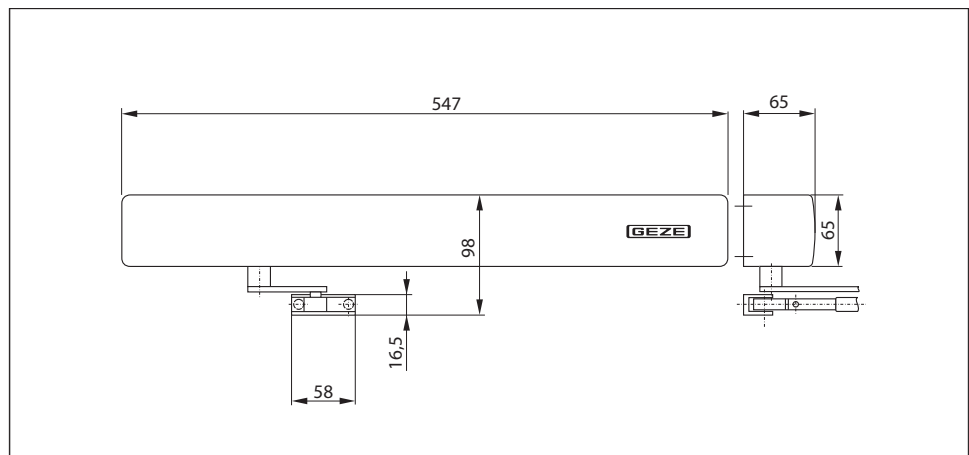
3) Not currently approved for fire and smoke doors, EN size 3, leaf width up to 950 mm

GEZE TS 4000 R

Link arm door closer for single-leaf doors with a leaf width up to 1400 mm featuring electric hold-open and smoke switch control unit

TS 4000 R overhead door closer, featuring an electric hold-open that is infinitely variable between 80° and 175° in accordance with EN 1155 and a smoke switch control unit built into the closer cover, is approved for use with left and right single-action doors with a door leaf width up to 1400 mm and for mounting on fire and smoke doors. In the event of a fire, the smoke detector is activated and the door closes automatically. The size 1-6 closing force to EN 1154, with optical size indicator, and the thermo-constant closing speed can be conveniently adjusted from the front; the latching action is adjusted by means of the link arm. Official building approval of a general nature from the DIBt (German Institute for Building Technology) (not applicable to transom mounting on the hinge side).

GEZE TS 4000 R



Application range

- For single-action doors, leaf width up to 1400 mm
- Compatible with left-hand and right-hand doors without the need for conversion
- For fire and smoke doors (door closers with mounting plate)
- Standard mounting involving transom mounting on opposite hinge side
- Transom mounting on hinge side possible with guide rail, closing force EN3, not approved for fire and smoke doors

Closer specifications

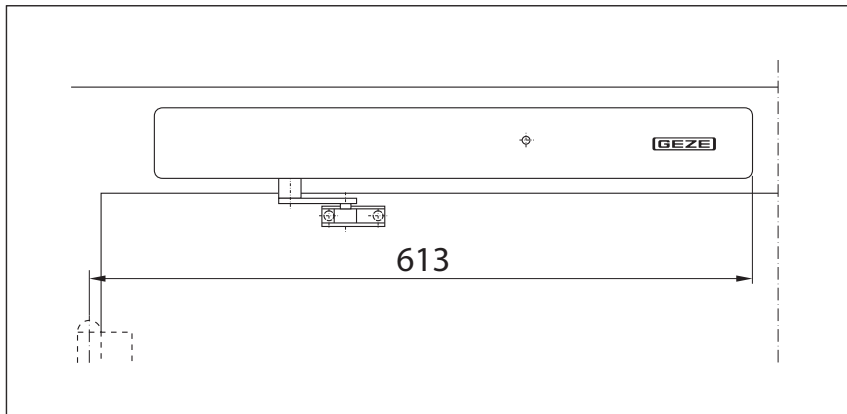
| Product features | GEZE TS 4000 R KM BG closer |
|---|--|
| Closing force to EN 1154 | 1 - 6 |
| Leaf width recommended up to | 1400 mm |
| Identical version DIN-L and DIN-R | ● |
| Supply voltage | 230 V 50 Hz |
| Enclosure rating IP | IP 20 |
| Product tested in acc. with | Door closer tested in acc. with EN 1154 Hold-open mechanism tested in acc. with EN 1155 Official building approval of a general nature from the DIBt (German Institute for Building Technology) for use as a hold-open system |
| Suitable for fire and smoke doors | ● |
| Mounting plate with hole pattern acc. to EN 1154 Supplement 1 | ● |
| Length | 547 mm |
| Installation depth | 65 mm |
| Height | 65 mm |
| Functions | |
| Adjustable closing force | ● Infinitely variable |
| Adjustable closing speed | ● |
| Adjustable latching action | ● Via link arm |
| Integrated back check | ○ |
| Closing force adjustment position | Front |
| Optical closing force display | ● |
| Safety valve featuring protection against vandalism | ● |
| Thermo-constant valves | ● |
| Integrated hold-open mechanism | Electric |
| Hold-open mechanism can be overridden | ● |
| Integrated smoke switch | ● |
| With visual status display | ● |
| With soiling indicator | ● |
| With adaption of the alarm threshold | ● |
| Integrated power supply unit | ● |

● = yes

○ = no

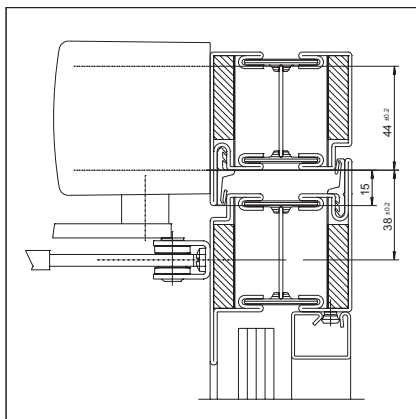
Transom mounting/opposite hinge side TS 4000 R

View

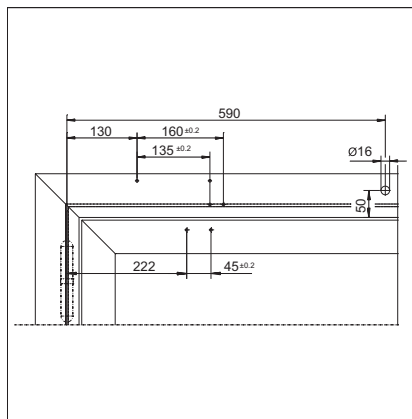


Mounting example for GEZE TS 4000 R

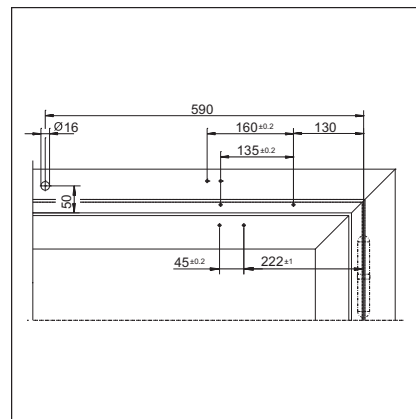
Direct mounting



Cross section = direct mounting

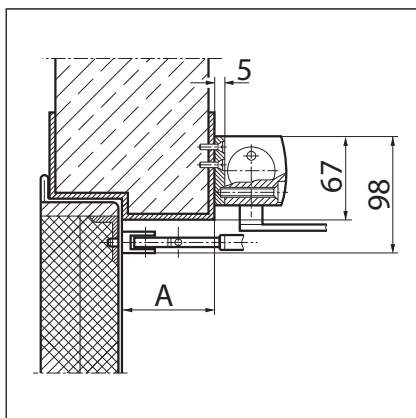


Fitting dimensions for right-hand door

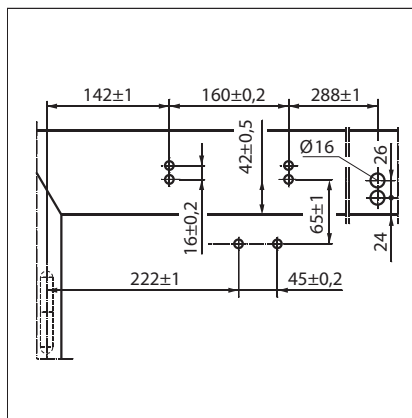


Fitting dimensions for left-hand door

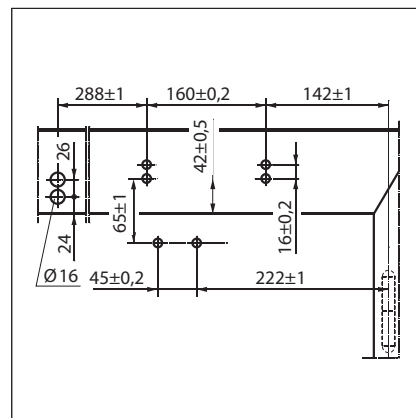
Mounting with mounting plate



Cross section = mounting with mounting plate
 A = max. 70 mm lintel depth with fire and smoke doors



Fitting dimensions for right-hand door



Fitting dimensions for left-hand door

GEZE SYSTEM TS 4000 / TS 2000 / TS 1500

GEZE TS 4000 R - Ordering information

| Designation | Version | ID no. |
|--|--------------------------------------|--------|
| GEZE TS 4000 R KM BG closer | Silver-coloured | 105241 |
| Size EN 1-6, transom mounting on opposite hinge side, featuring electric hold-open and integrated smoke switch control unit (without link arm) | Acc. to RAL ²⁾ | 105242 |
| GEZE TS 4000 R KM BS closer ³⁾ | Silver-coloured | 105243 |
| Size EN 1-3, transom mounting on hinge side, featuring electric hold-open and integrated smoke switch control unit (without guide rail) | Acc. to RAL ²⁾ | 105267 |
| Guide rail TS 4000 E/R | Silver-coloured | 102527 |
| With lever, designed for transom mounting on hinge side | Acc. to RAL ²⁾ | 102530 |
| Link arm TS 4000/2000 Extended, for transom mounting with a soffit depth of 70-170 mm | Silver-coloured | 102431 |
| | Dark bronze | 102432 |
| | White RAL 9016 | 102433 |
| | Acc. to RAL ²⁾ | 102434 |
| Link arm TS 4000/2000 Standard | Silver-coloured | 102421 |
| | Dark bronze | 102422 |
| | White RAL 9016 | 102423 |
| | Stainless steel effect ¹⁾ | 102426 |
| | Acc. to RAL ²⁾ | 102425 |
| Installation material | | |
| Spindle extension for TS 4000/TS 2000 Crown type connection | 10 mm Galvanised | 103548 |
| | 10 mm Black | 103677 |
| | 15 mm Galvanised | 103549 |
| | 15 mm Black | 103678 |
| | 20 mm Galvanised | 103550 |
| | 20 mm Black | 103679 |
| Door closer mounting plate For TS 5000 RFS KM/4000 R & R-IS with hole pattern acc. to DIN EN 1154 Supplement 1 | Black | 058808 |
| Accessories | | |
| GEZE smoke switch RS 5 For ceiling and lintel mounting | Silver-coloured | 027052 |
| | Dark bronze | 028939 |
| | White RAL 9016 | 028940 |
| | Stainless steel effect ¹⁾ | 028942 |
| | Acc. to RAL ²⁾ | 028941 |
| GEZE circuit breaker Concealed version, for manual release of electrically controlled door closers and retention magnets | Alpine white | 116266 |
| Surface-mounted socket Package | | 120503 |

1) Only suitable for dry rooms

2) Surcharge for special RAL colours, see general information

3) Not currently approved for fire and smoke doors, EN size 3, leaf width up to 950 mm

GEZE TS 4000 EFS

Link arm door closer for single-leaf doors with a leaf width up to 1400 mm featuring electric freeswing-function

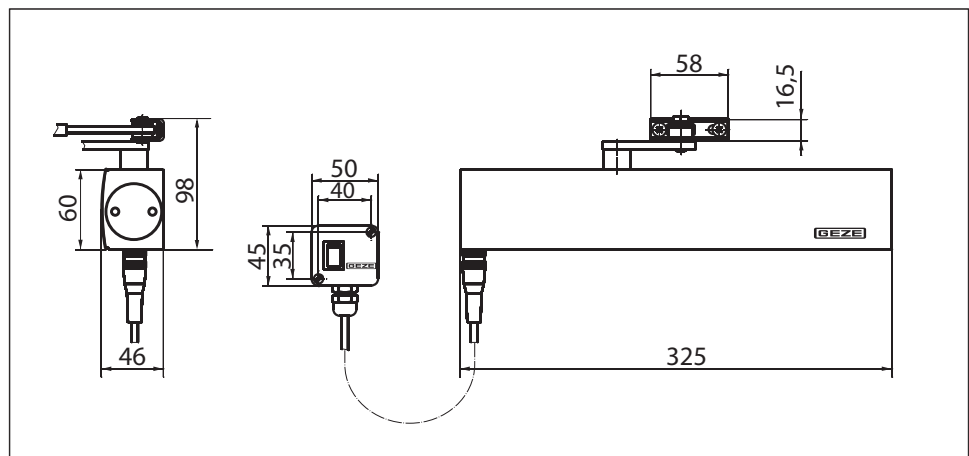
TS 4000 EFS (24 V DC) overhead door closer for single-leaf doors features what is known as a "freeswing" function. After the freeswing function has been activated by opening the door once by an angle of approximately 90° (e.g. in the morning), users can pass through the door in either direction without having to press very hard on the door at all. This function is particularly useful in retirement homes or hospitals, for example. TS 4000 EFS features an electric hold-open that is infinitely variable between 80° and 180° in accordance with EN 1155 to support the freeswing function. It is approved for use with left and right single-action doors with a door leaf width up to 1400 mm and for mounting on fire and smoke doors. The size 1-6 closing force to EN 1154, with optical size indicator, and the thermo-constant closing speed can be conveniently adjusted from the front; the latching action is adjusted by means of the link arm.

Please note: Due to the guideline of hold-open systems of the DIBt (German Institution for Construction Technology) a circuit breaker is imperatively stipulated when using a door closer with freeswing function.

Special version:

- GEZE TS 4000 EFS/transom mounting on opposite hinge side 24 V DC

GEZE TS 4000 EFS



Application range

- For single-action doors, leaf width up to 1400 mm
- Compatible with left-hand and right-hand doors without the need for conversion
- For fire and smoke doors (door closers with mounting plate)
- Standard mounting on door leaf, hinge side; transom mounting on opposite hinge side also possible
- Transom mounting on hinge side possible with freeswing guide rail, closing force EN3, not approved for fire and smoke doors

Closer specifications

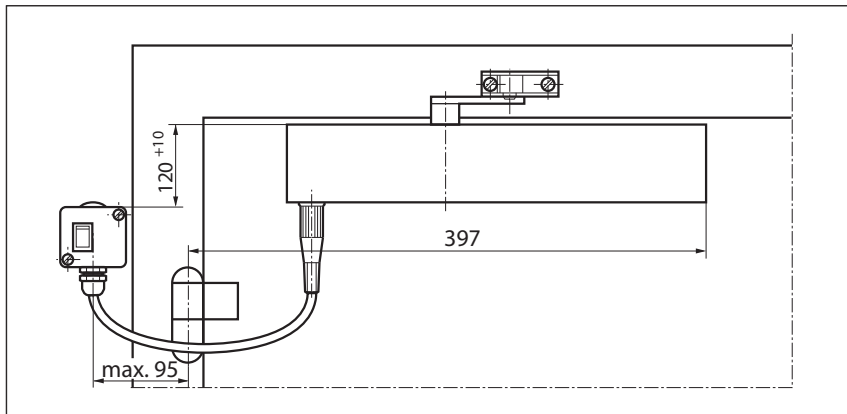
| Product features | GEZE TS 4000 EFS closer |
|---|--|
| Closing force to EN 1154 | 1 - 6 |
| Leaf width recommended up to | 1400 mm |
| Identical version DIN-L and DIN-R | ● |
| Supply voltage | 24 V DC |
| Enclosure rating IP | IP 43 |
| Product tested in acc. with | Door closer tested in acc. with EN 1154 Hold-open mechanism tested in acc. with EN 1155 |
| Suitable for fire and smoke doors | ● |
| Mounting plate with hole pattern acc. to EN 1154 Supplement 1 | ● |
| Length | 325 mm |
| Installation depth | 46 mm |
| Height | 60 mm |
| Functions | |
| Adjustable closing force | ● Infinitely variable |
| Adjustable closing speed | ● |
| Adjustable latching action | ● Via link arm |
| Integrated back check | ○ |
| Closing force adjustment position | Front |
| Optical closing force display | ● |
| Safety valve featuring protection against vandalism | ● |
| Thermo-constant valves | ● |
| Integrated hold-open mechanism | Electric |
| Freeswing range | 80°-175° |

● = yes

○ = no

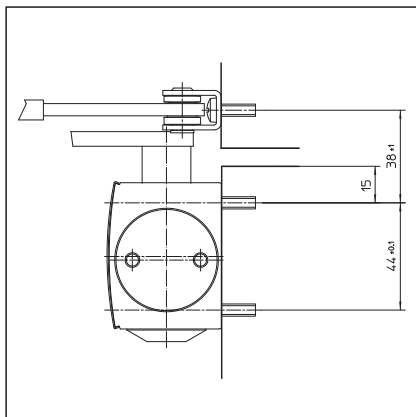
Door leaf mounting/hinge side TS 4000 EFS

View

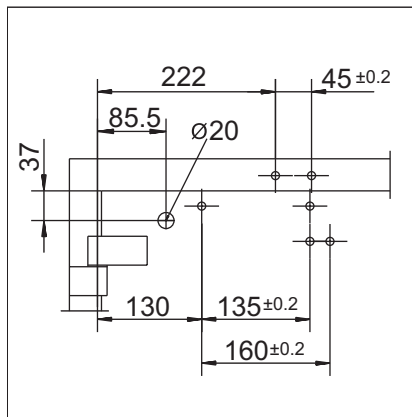


Mounting example for GEZE TS 4000 EFS

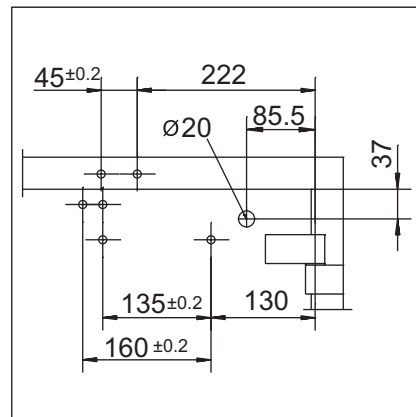
Direct mounting



Cross section = direct mounting

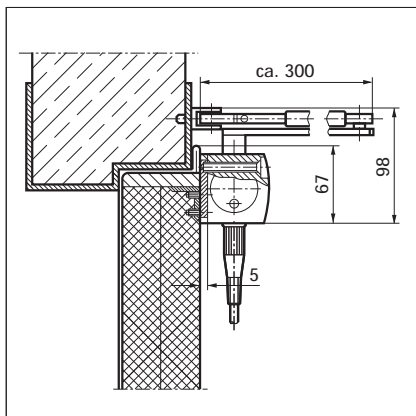


Fitting dimensions for left-hand door

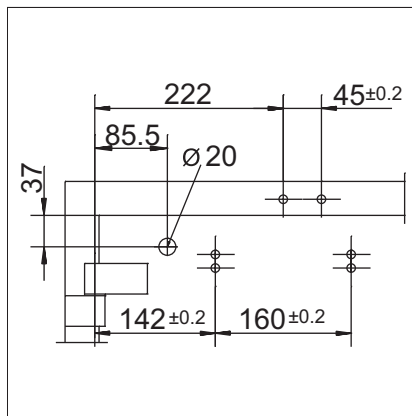


Fitting dimensions for right-hand door

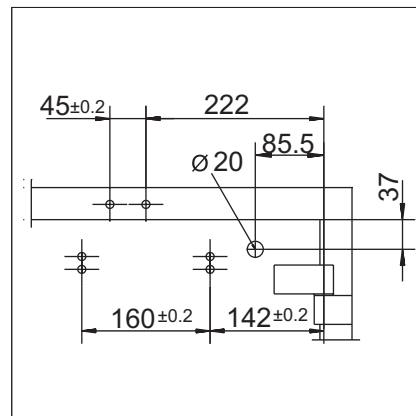
Mounting with mounting plate



Cross section = mounting with mounting plate



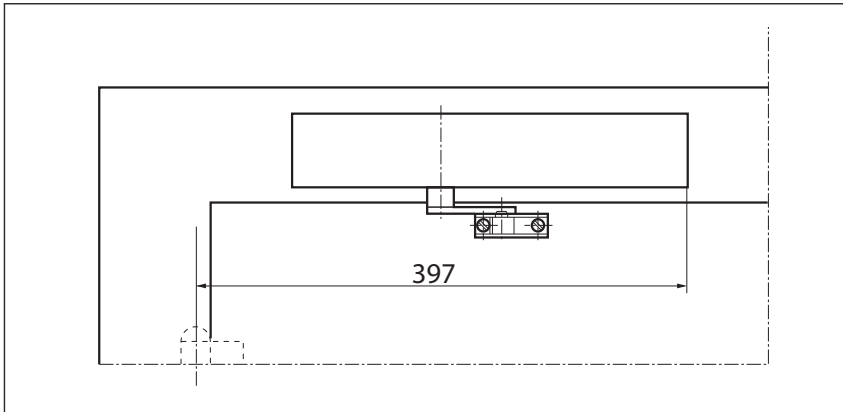
Fitting dimensions for left-hand door



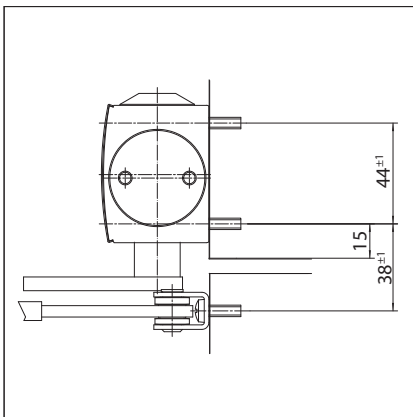
Fitting dimensions for right-hand door

Transom mounting/opposite hinge side TS 4000 EFS

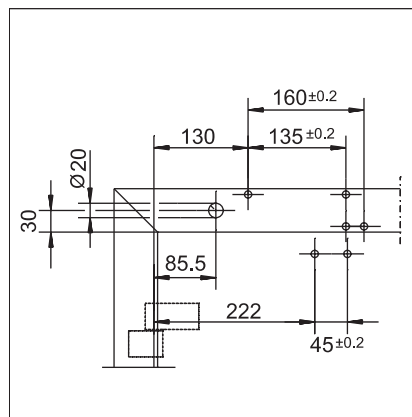
View



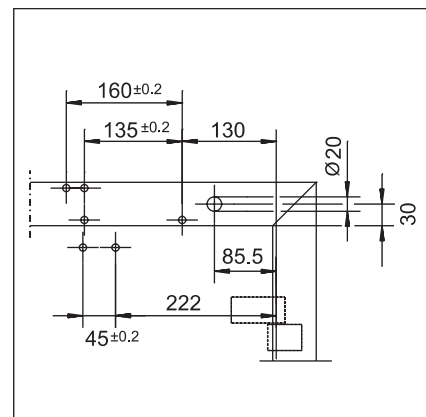
Mounting example for GEZE TS 4000 EFS

Direct mounting

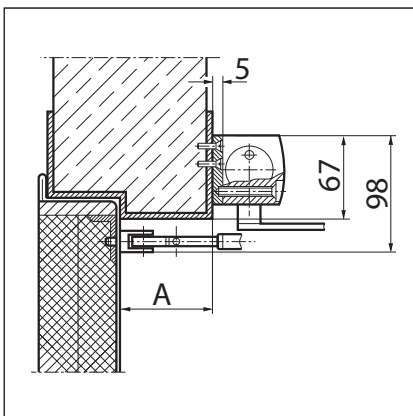
Cross section = direct mounting



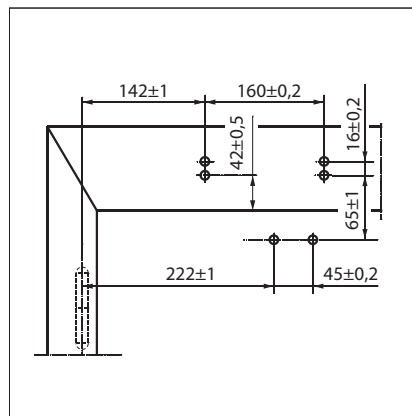
Fitting dimensions for right-hand door



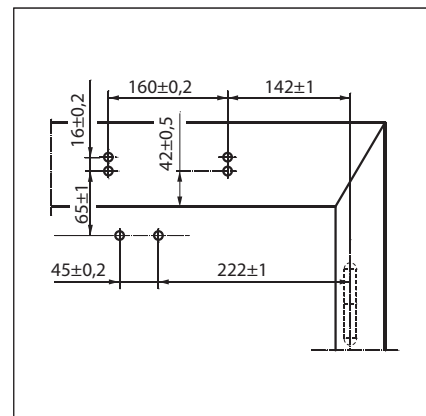
Fitting dimensions for left-hand door

Mounting with mounting plate

Cross section = mounting with mounting plate
 A = max. 70 mm lintel depth with fire and smoke doors



Fitting dimensions for right-hand door



Fitting dimensions for left-hand door

GEZE TS 4000 EFS - Ordering information

| Designation | Version | ID no. |
|--|--------------------------------------|--------|
| GEZE TS 4000 EFS closer | Silver-coloured | 105211 |
| Size EN 1-6, door leaf installation on hinge side, featuring electric hold-open for freeswing function and connector box (without freeswing arm) | Acc. to RAL | 105212 |
| GEZE TS 4000 EFS KM BG closer | Silver-coloured | 105213 |
| Size EN 1-6, transom mounting on opposite hinge side, featuring electric hold-open for freeswing function (without freeswing arm) | Acc. to RAL | 105214 |
| GEZE TS 4000 EFS KM BS closer ³⁾ | Silver-coloured | 105235 |
| Size EN 1-3, transom mounting on hinge side, featuring electric hold-open for freeswing function (without freeswing guide rail) | Acc. to RAL | 105236 |
| Guide rail TS 4000 EFS/RFS ³⁾ | Silver-coloured | 106844 |
| With freeswing function and lever, designed for transom mounting on hinge side | Acc. to RAL | 106466 |
| Link arm TS 4000 EFS/RFS | Silver-coloured | 106460 |
| With freeswing function | Acc. to RAL ²⁾ | 106462 |
| Installation material | | |
| Spindle extension for TS 4000/TS 2000 Crown type connection | 10 mm Galvanised | 103548 |
| | 10 mm Black | 103677 |
| | 15 mm Galvanised | 103549 |
| | 15 mm Black | 103678 |
| | 20 mm Galvanised | 103550 |
| | 20 mm Black | 103679 |
| Door closer drilling template For TS 5000/4000/3000/2000 | | 053134 |
| Link arm mounting plate For TS 4000/2000, with narrow rebates | Silver-coloured | 057109 |
| | Acc. to RAL ²⁾ | 082506 |
| Link arm mounting plate For TS 4000/2000, with parallel arm mounting | Silver-coloured | 053318 |
| | Dark bronze | 053319 |
| | Acc. to RAL ²⁾ | 027460 |
| Door closer mounting plate For TS 5000 EFS/RFS/EHY / 4000 E with hole pattern acc. to DIN EN 1154 Supplement 1 | Silver-coloured | 059107 |
| | Acc. to RAL ²⁾ | 100044 |
| Accessories | | |
| GEZE smoke switch control unit RSZ 6 Approved for all GEZE hold-open mechanisms | Silver-coloured | 099851 |
| | Dark bronze | 099857 |
| | White RAL 9016 | 099858 |
| | Stainless steel effect ¹⁾ | 099856 |
| | Acc. to RAL ²⁾ | 099859 |
| GEZE smoke switch RS 5 For ceiling and lintel mounting | Silver-coloured | 027052 |
| | Dark bronze | 028939 |
| | White RAL 9016 | 028940 |
| | Stainless steel effect ¹⁾ | 028942 |
| | Acc. to RAL ²⁾ | 028941 |
| GEZE circuit breaker Concealed version, for manual release of electrically controlled door closers and retention magnets | Alpine white | 116266 |
| Surface-mounted socket Package | | 120503 |

1) Only suitable for dry rooms

2) Surcharge for special RAL colours, see general information

3) Not approved for fire and smoke doors in Germany

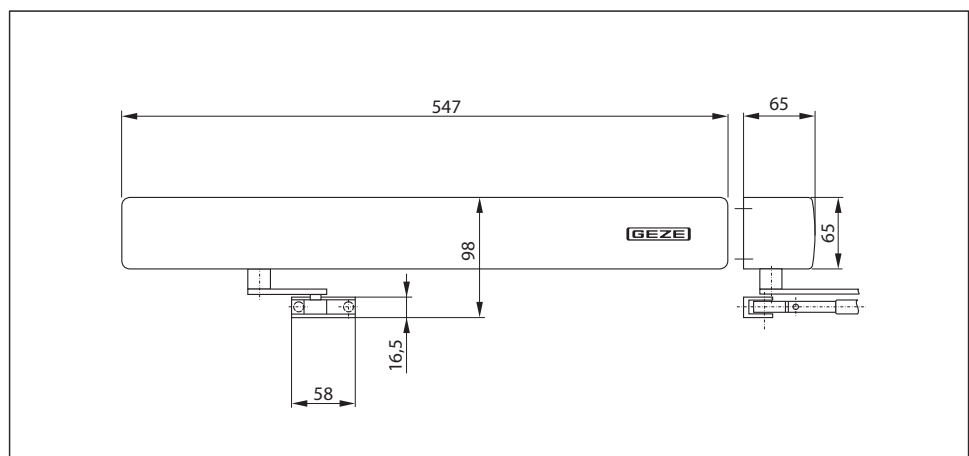
GEZE TS 4000 RFS

Link arm door closer for single-leaf doors with a leaf width up to 1400 mm featuring electric freeswing function and smoke switch control unit

TS 4000 RFS overhead door closer for single-leaf doors features what is known as a "freeswing" function. After the freeswing function has been activated by opening the door once by an angle of approximately 90° (e.g. in the morning), users can pass through the door in either direction without having to press very hard on the door at all. This function is particularly useful in retirement homes or hospitals, for example. TS 4000 RFS features an infinitely variable electric hold-open in accordance with EN 1155 and a smoke switch control unit built into the closer cover. It is approved for use with left and right single-action doors with a door leaf width up to 1400 mm and for mounting on fire and smoke doors. The size 1-6 closing force to EN 1154, with optical size indicator, and the thermo-constant closing speed can be conveniently adjusted from the front; the latching action is adjusted by means of the link arm. The product has been granted official building approval of a general nature by the DIBt (German Institute for Building Technology) (EN 1155 and DIBt approval not applicable to transom mounting on the hinge side).

Please note: Due to the guideline of hold-open systems of the DIBt (German Institution for Construction Technology) a circuit breaker is imperatively stipulated when using a door closer with freeswing function.

GEZE TS 4000 RFS



Application range

- For single-action doors, leaf width up to 1400 mm
- Compatible with left-hand and right-hand doors without the need for conversion
- For fire and smoke doors (door closers with mounting plate)
- Standard mounting involving transom mounting on opposite hinge side
- Transom mounting on hinge side possible with freeswing guide rail, closing force EN3, not approved for fire and smoke doors

Closer specifications

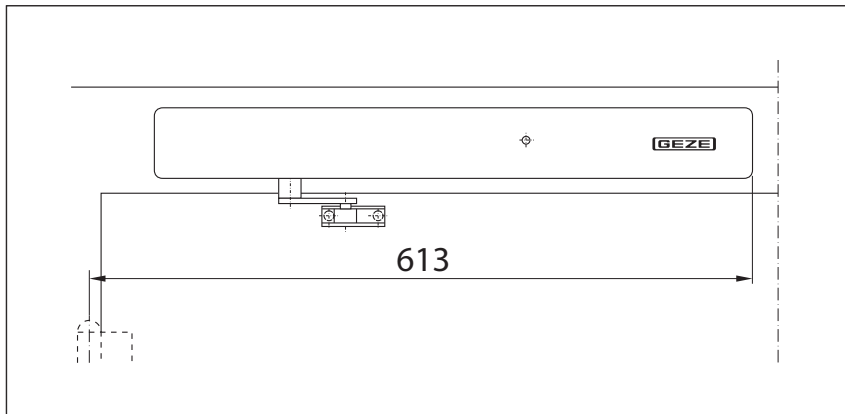
| Product features | GEZE TS 4000 RFS KM BG closer |
|---|---|
| Closing force to EN 1154 | 1 - 6 |
| Leaf width recommended up to | 1400 mm |
| Identical version DIN-L and DIN-R | ● |
| Supply voltage | 230 V 50 Hz |
| Enclosure rating IP | IP 20 |
| Product tested in acc. with | Door closer tested in acc. with EN 1154 Hold-open mechanism tested in acc. with EN 1155 Official building approval of a general nature from the DIBt (German Institute for Building Technology) for use as a hold-open system |
| Suitable for fire and smoke doors | ● |
| Mounting plate with hole pattern acc. to EN 1154 Supplement 1 | ● |
| Length | 547 mm |
| Installation depth | 65 mm |
| Height | 65 mm |
| Functions | |
| Adjustable closing force | ● Infinitely variable |
| Adjustable closing speed | ● |
| Adjustable latching action | ● Via link arm |
| Integrated back check | ○ |
| Closing force adjustment position | Front |
| Optical closing force display | ● |
| Safety valve featuring protection against vandalism | ● |
| Thermo-constant valves | ● |
| Integrated hold-open mechanism | Electric |
| Integrated smoke switch | ● |
| With visual status display | ● |
| With soiling indicator | ● |
| With adaption of the alarm threshold | ● |
| Integrated power supply unit | ● |
| Freeswing range | 80°-175° |

● = yes

○ = no

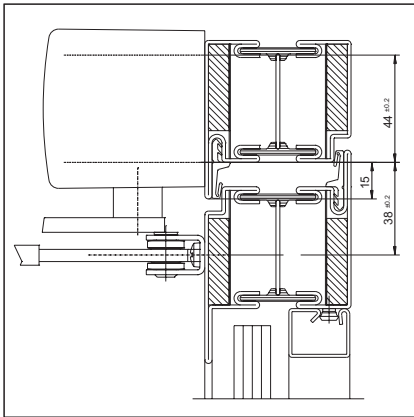
Transom mounting/opposite hinge side TS 4000 RFS

View

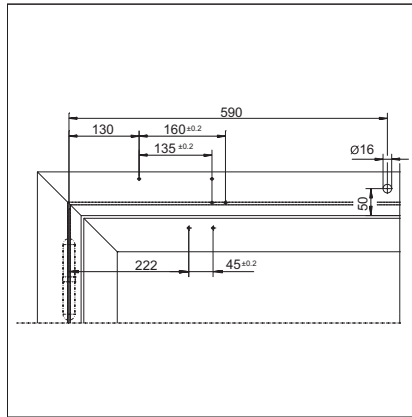


Mounting example for GEZE TS 4000 RFS

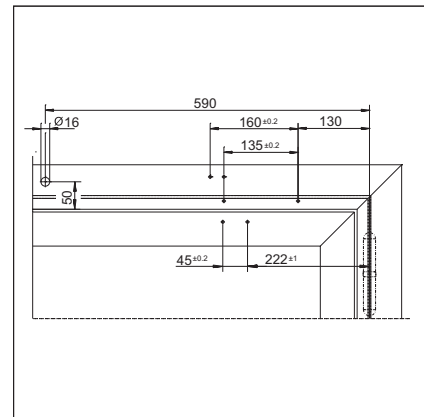
Direct mounting



Cross section = direct mounting

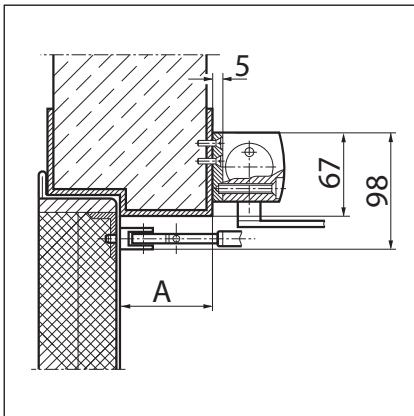


Fitting dimensions for right-hand door

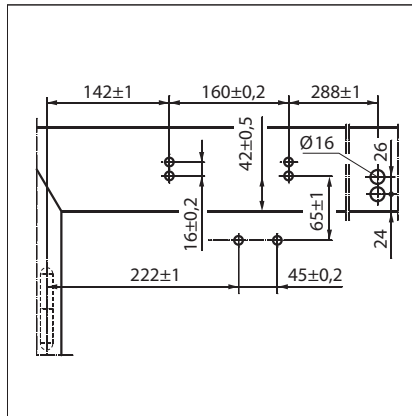


Fitting dimensions for left-hand door

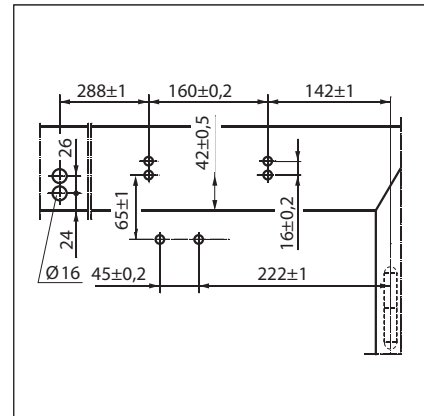
Mounting with mounting plate



Cross section = mounting with mounting plate,
A = max. 70 mm lintel depth with fire and
smoke doors



Fitting dimensions for right-hand door



Fitting dimensions for left-hand door

GEZE TS 4000 RFS - Ordering information

| Designation | Version | ID no. |
|---|--------------------------------------|--------|
| GEZE TS 4000 RFS KM BG closer Size EN 1-6, transom mounting on opposite hinge side, featuring electric hold-open for freeswing function and integrated smoke switch control unit (without freeswing arm) | Silver-coloured | 105241 |
| | Acc. to RAL | 105242 |
| GEZE TS 4000 RFS KM BS closer ³⁾ Size EN 1-3, transom mounting on hinge side, featuring electric hold-open for freeswing function and integrated smoke switch control unit (without freeswing guide rail) | Silver-coloured | 105243 |
| | Acc. to RAL | 105267 |
| Guide rail TS 4000 EFS/RFS With freeswing function and lever, designed for transom mounting on hinge side | Silver-coloured | 106844 |
| | Acc. to RAL | 106466 |
| Link arm TS 4000 EFS/RFS With freeswing function | Silver-coloured | 106460 |
| | Acc. to RAL ²⁾ | 106462 |
| Installation material | | |
| Spindle extension for TS 4000/TS 2000 Crown type connection | 10 mm Galvanised | 103548 |
| | 10 mm Black | 103677 |
| | 15 mm Galvanised | 103549 |
| | 15 mm Black | 103678 |
| | 20 mm Galvanised | 103550 |
| | 20 mm Black | 103679 |
| Door closer mounting plate For TS 5000 RFS KM/4000 R & R-IS with hole pattern acc. to DIN EN 1154 Supplement 1 | Black | 058808 |
| Accessories | | |
| GEZE smoke switch RS 5 For ceiling and lintel mounting | Silver-coloured | 027052 |
| | Dark bronze | 028939 |
| | White RAL 9016 | 028940 |
| | Stainless steel effect ¹⁾ | 028942 |
| | Acc. to RAL ²⁾ | 028941 |
| GEZE circuit breaker Concealed version, for manual release of electrically controlled door closers and retention magnets | Alpine white | 116266 |
| Surface-mounted socket Package | | 120503 |

¹⁾ Only suitable for dry rooms

²⁾ Surcharge for special RAL colours, see general information

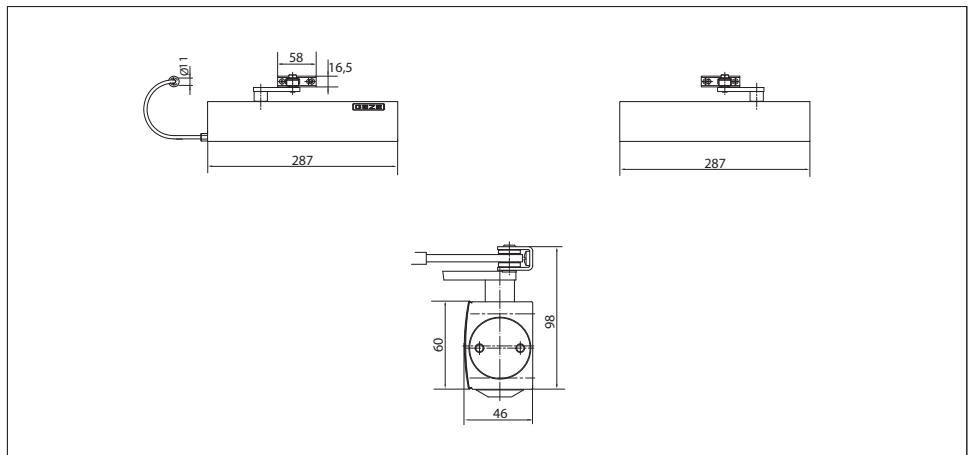
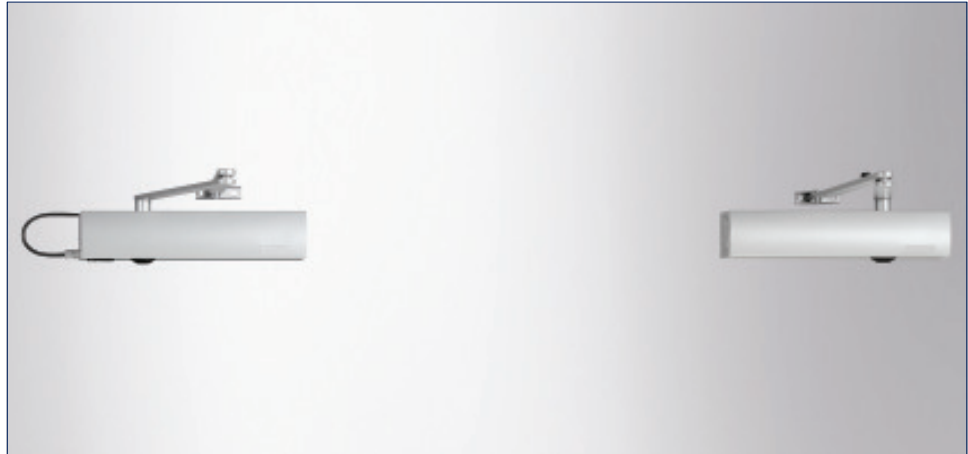
³⁾ Not approved for fire and smoke doors, EN size 3, leaf width up to 950 mm

GEZE TS 4000 IS

Link arm door closer system for double-leaf doors with a hinge clearance up to 2800 mm featuring integrated closing sequence control

TS 4000 IS overhead door closer system, featuring integrated hydraulic closing sequence control, is approved for mounting on fire and smoke doors. The integrated closing sequence control, featuring protection against vandalism, ensures that both door leaves close in the correct order when used with double-leaf doors. When the door closes, the moving leaf remains in the waiting position until the fixed leaf is closed and until the moving leaf is released by the closing sequence control. The size 1-6 closing force to EN 1154, with optical size indicator, and the closing speed can be adjusted from the front. The latching action is adjusted by means of the link arm.

GEZE TS 4000 IS



Application range

- For double-leaf doors, leaf width up to 1400 mm
- Compatible with left-hand and right-hand doors without the need for conversion
- For fire and smoke doors (door closers with mounting plate)
- Standard mounting on door leaf, hinge side; transom mounting on opposite hinge side also possible

Closer specifications

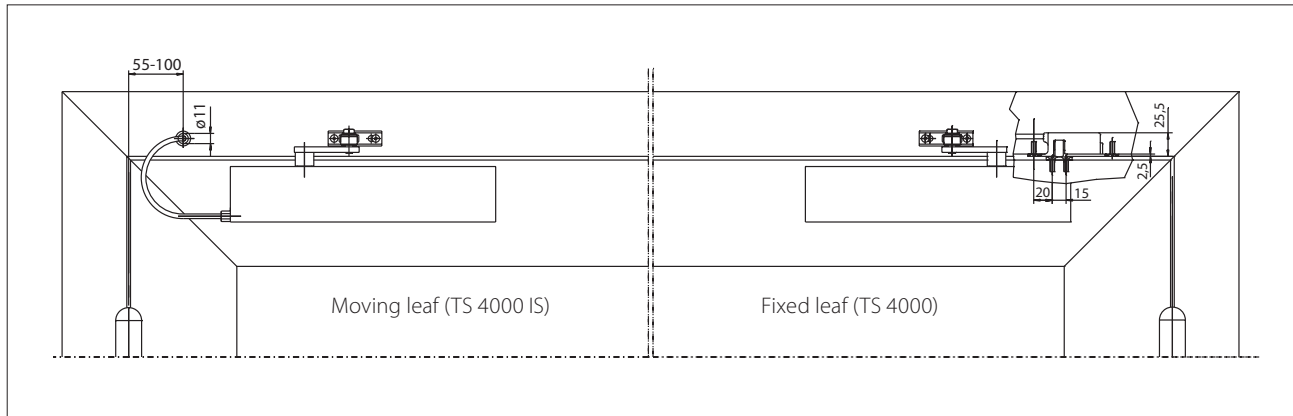
| Product features | GEZE TS 4000 IS closer | GEZE TS 4000 closer |
|---|---|---|
| Closing force to EN 1154 | 1 - 6 | |
| Leaf width recommended up to | 1400 mm | |
| Identical version DIN-L and DIN-R | ● | ● |
| Product tested in acc. with | Door closer tested in acc. with EN 1154 Door closing sequence selector tested in acc. with EN 1158 | Door closer tested in acc. with EN 1154 |
| Suitable for fire and smoke doors | ● | ● |
| Mounting plate with hole pattern acc. to EN 1154 Supplement 1 | ● | ● |
| Length | 287 mm | |
| Installation depth | 46 mm | |
| Height | 60 mm | |
| | | |
| Functions | | |
| Adjustable closing force | ● Infinitely variable | |
| Adjustable closing speed | ● | ● |
| Adjustable latching action | ● Via link arm | |
| Integrated back check | ○ | ● Hydraulically adjustable |
| Closing force adjustment position | Front | |
| Optical closing force display | ● | ● |
| Safety valve featuring protection against vandalism | ● | ● |
| Thermo-constant valve | ● | ● |
| Integrated closing sequence control | ● | |

● = yes

○ = no

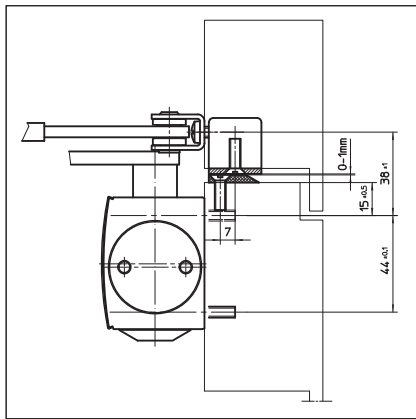
Door leaf mounting/hinge side TS 4000 IS

View

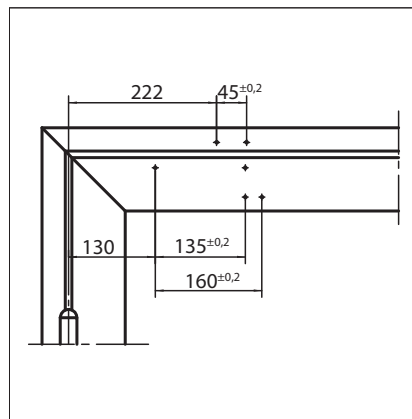


Mounting example for GEZE TS 4000 IS

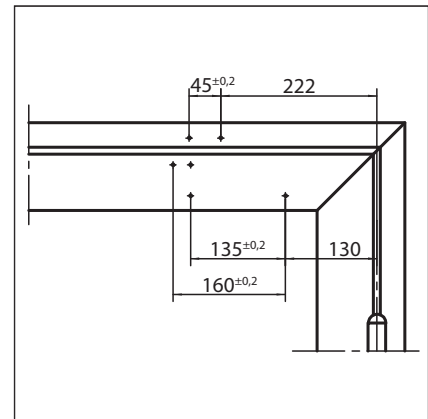
Direct mounting



Cross section = direct mounting

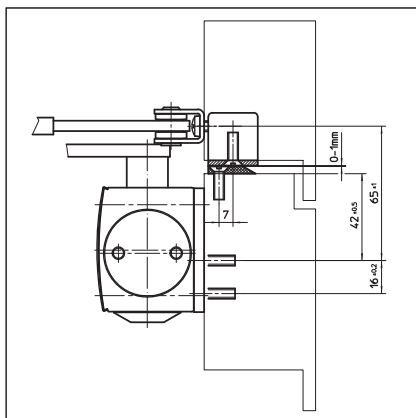


Fitting dimensions for left-hand door

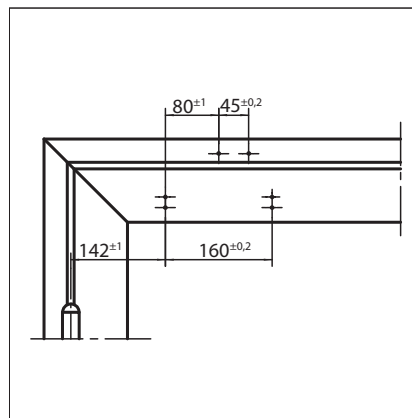


Fitting dimensions for right-hand door

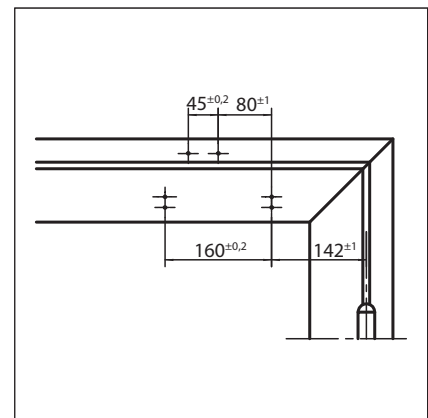
Mounting with mounting plate



Cross section = mounting with mounting plate



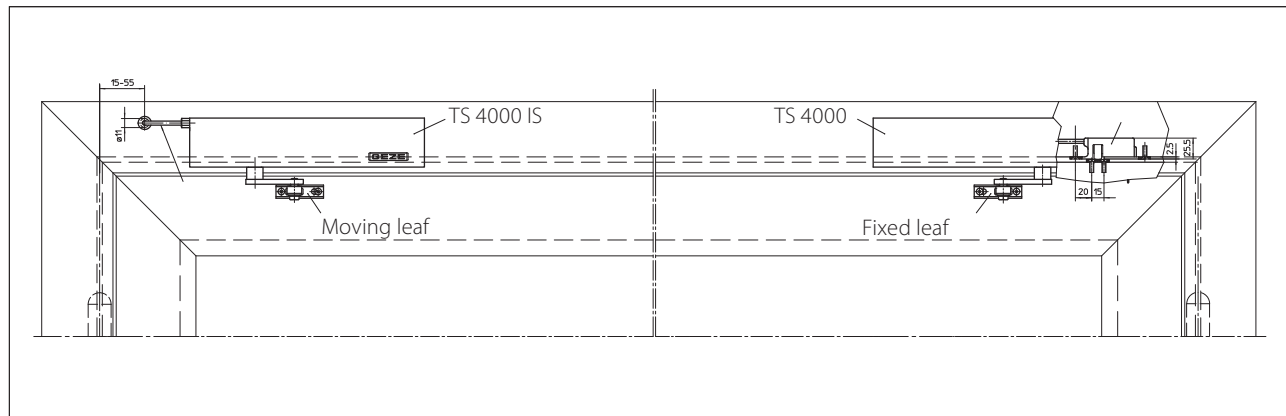
Fitting dimensions for left-hand door



Fitting dimensions for right-hand door

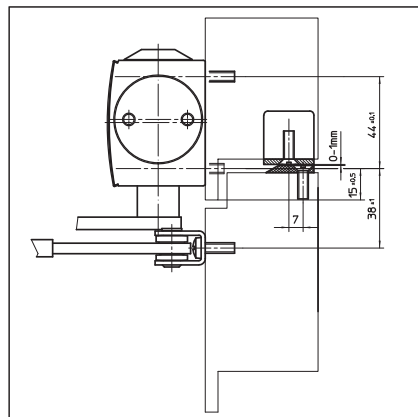
Transom mounting/opposite hinge side TS 4000 IS

View

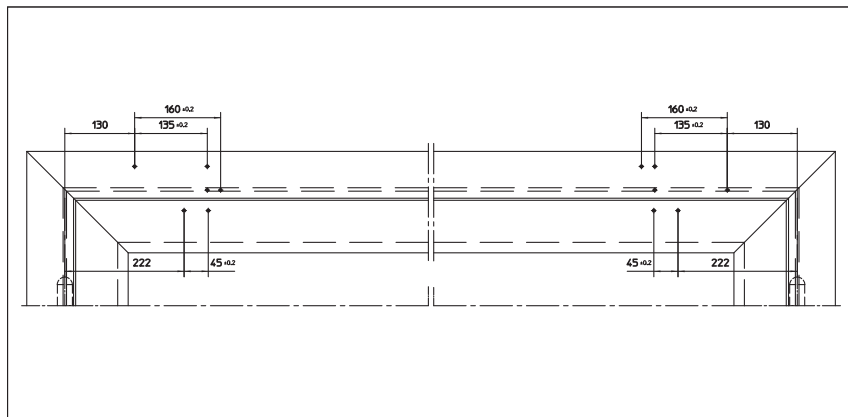


Mounting example for GEZE TS 4000 IS

Direct mounting

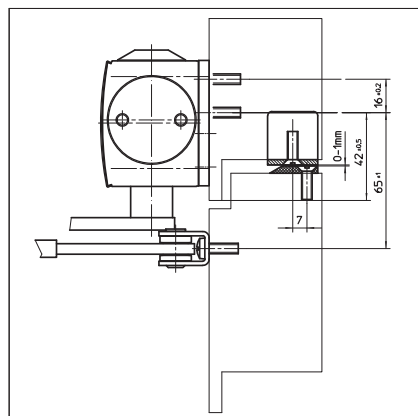


Cross section = direct mounting

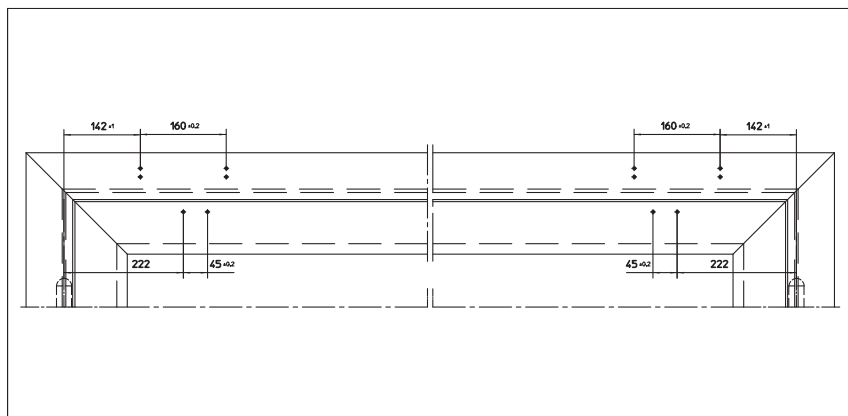


Fitting dimensions for right-hand leaf = moving leaf, left-hand leaf = fixed leaf

Mounting with mounting plate

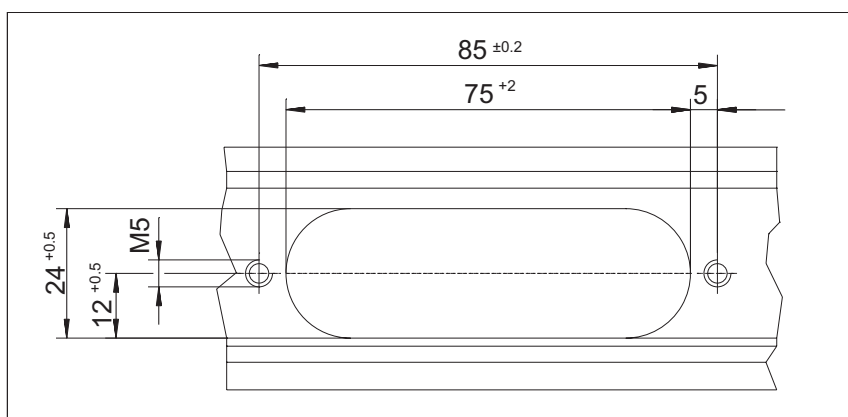


Cross section = mounting with mounting plate



Fitting dimensions for right-hand leaf = moving leaf, left-hand leaf = fixed leaf

Recess for release mechanism



GEZE TS 4000 IS - Ordering information

| Designation | Version | ID no. | |
|---|--------------------------------------|------------|--------|
| GEZE TS 4000 IS closer Size EN 1-6 with integrated closing sequence control (without release mechanism and link arm) | Silver-coloured | 102798 | |
| | Dark bronze | 102799 | |
| | White RAL 9016 | 102801 | |
| | Acc. to RAL ²⁾ | 102802 | |
| GEZE TS 4000 closer Size EN 1-6 with back check (without link arm) | Silver-coloured | 102789 | |
| | Dark bronze | 102790 | |
| | White RAL 9016 | 102791 | |
| | Acc. to RAL ²⁾ | 102792 | |
| Link arm TS 4000/2000 Extended, for transom mounting with a soffit depth of 70-170 mm | Silver-coloured | 102431 | |
| | Dark bronze | 102432 | |
| | White RAL 9016 | 102433 | |
| | Acc. to RAL ²⁾ | 102434 | |
| Link arm TS 4000/2000 Standard | Silver-coloured | 102421 | |
| | Dark bronze | 102422 | |
| | White RAL 9016 | 102423 | |
| | Stainless steel effect ¹⁾ | 102426 | |
| | Acc. to RAL ²⁾ | 102425 | |
| Installation material | | | |
| Spindle extension for TS 4000/TS 2000 Crown type connection | 10 mm | Galvanised | 103548 |
| | 10 mm | Black | 103677 |
| | 15 mm | Galvanised | 103549 |
| | 15 mm | Black | 103678 |
| | 20 mm | Galvanised | 103550 |
| | 20 mm | Black | 103679 |
| Door closer drilling template For TS 5000/4000/3000/2000 | | 053134 | |
| Glass clamping plate for door closer For TS 5000/TS 4000 | Silver-coloured | 057126 | |
| | Dark bronze | 057127 | |
| | White RAL 9016 | 009491 | |
| | Acc. to RAL ²⁾ | 009494 | |
| All-glass door mounting and counter plate For TS 5000/TS 4000 | Silver-coloured | 007923 | |
| | Dark bronze | 007924 | |
| | Acc. to RAL ²⁾ | 007926 | |
| Link arm mounting plate For TS 4000/2000, with narrow rebates | Silver-coloured | 057109 | |
| | Acc. to RAL ²⁾ | 082506 | |
| Link arm mounting plate For TS 4000/2000, with parallel arm mounting | Silver-coloured | 053318 | |
| | Dark bronze | 053319 | |
| | Acc. to RAL ²⁾ | 027460 | |
| Door closer mounting plate For TS 5000/4000 with hole pattern acc. to DIN EN 1154 Supplement 1 | Silver-coloured | 049185 | |
| | Dark bronze | 052351 | |
| | White RAL 9016 | 068627 | |
| | Galvanised | 057956 | |
| | Acc. to RAL ²⁾ | 029176 | |
| Lintel casing bracket for transom mounting opposite hinge side For TS 5000/TS 4000 | Silver-coloured | 049240 | |
| | Dark bronze | 052352 | |
| | Acc. to RAL ²⁾ | 104451 | |

GEZE SYSTEM TS 4000 / TS 2000 / TS 1500

Accessories

Closing sequence control release mechanism
For TS 4000 IS / E-IS

| | |
|---|--------|
| No.1 hinge clearance 1200-1500 mm | 058306 |
| No.2 hinge clearance 1500-1800 mm | 058307 |
| No.3 hinge clearance 1800-2100 mm | 058308 |
| No.4 hinge clearance 2100-2400 mm | 058309 |
| No.5 hinge clearance 2400-2700 mm | 058310 |
| No.6 hinge clearance in excess of 2700 mm | 058311 |

1) Only suitable for dry rooms

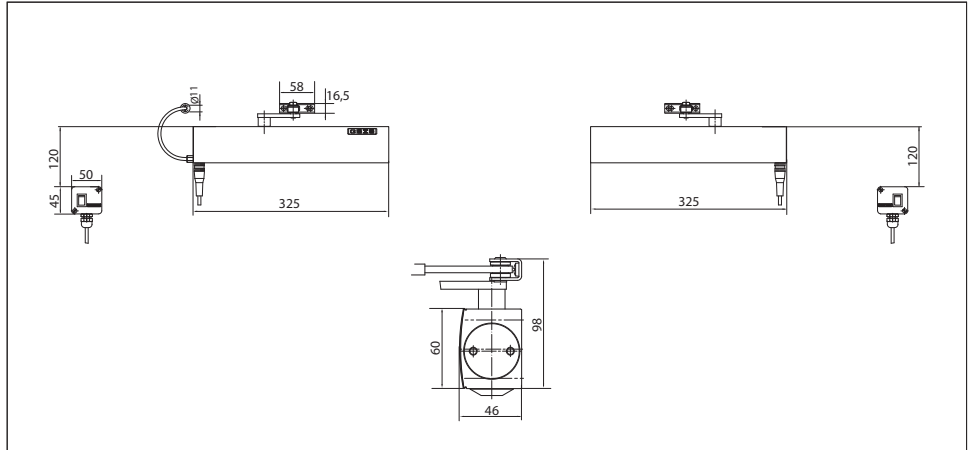
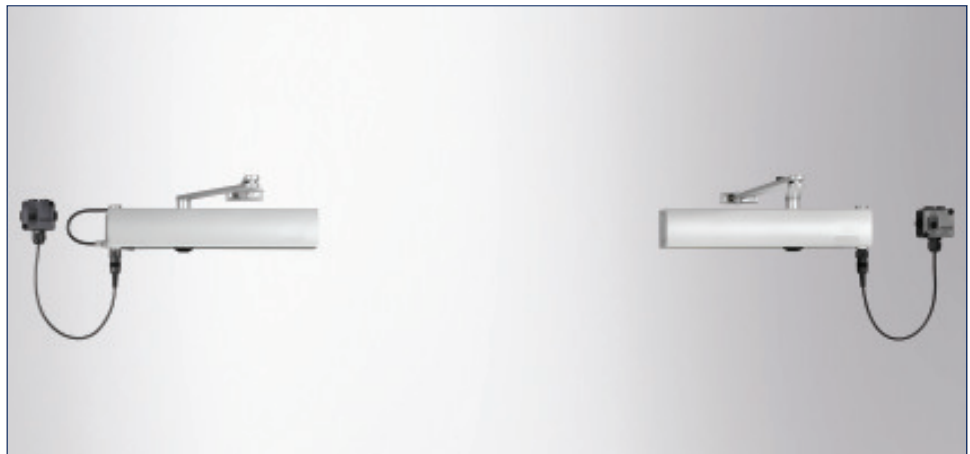
2) Surcharge for special RAL colours, see general information

GEZE TS 4000 E-IS

Link arm door closer system for double-leaf doors with a hinge clearance up to 2800 mm featuring integrated closing sequence control and electric hold-open

TS 4000 E-IS (24 V DC) overhead door closer system, featuring integrated hydraulic closing sequence control and electric hold-open, is approved for mounting on fire and smoke doors. The integrated closing sequence control, featuring protection against vandalism, ensures that both door leaves close in the correct order when used with double-leaf doors. When the door closes, the moving leaf remains in the waiting position until the fixed leaf is closed and until the moving leaf is released by the closing sequence control. The electric hold-open is infinitely variable between 80° and 175° in accordance with EN 1155. The size 1-6 closing force to EN 1154, with optical size indicator, and the closing speed can be adjusted from the front. The latching action is adjusted by means of the rod assembly.

GEZE TS 4000 E-IS



Application range

- For double-leaf doors, leaf width up to 1400 mm
- Compatible with left-hand and right-hand doors without the need for conversion
- For fire and smoke doors (door closers with mounting plate)
- Standard mounting on door leaf, hinge side; transom mounting on opposite hinge side also possible

GEZE SYSTEM TS 4000 / TS 2000 / TS 1500

Closer specifications

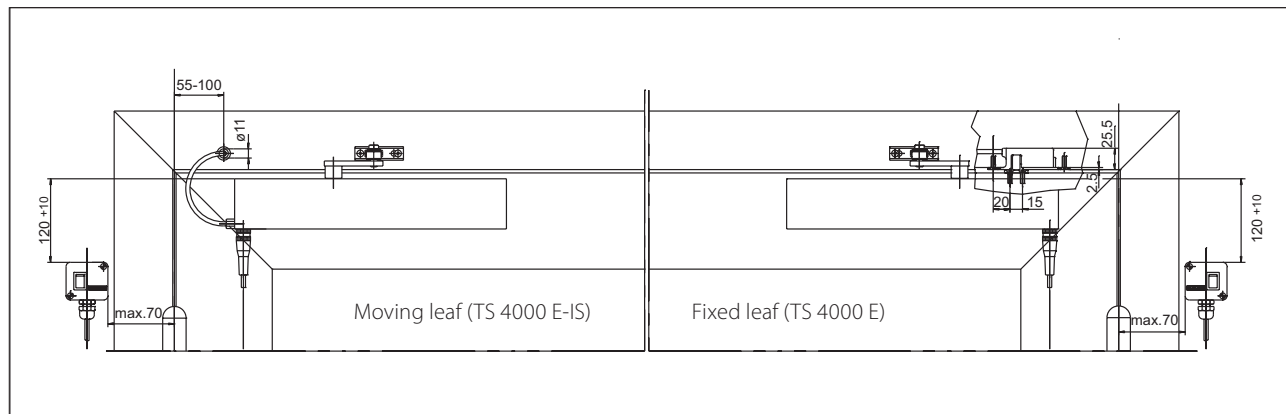
| Product features | GEZE TS 4000 E-IS closer | GEZE TS 4000 E closer |
|---|--|--|
| Closing force to EN 1154 | 1 - 6 | |
| Leaf width recommended up to | 1400 mm | |
| Identical version DIN-L and DIN-R | ● | ● |
| Supply voltage | 24 V DC | |
| Enclosure rating IP | IP 43 | |
| Product tested in acc. with | Door closer tested in acc. with EN 1154 Hold-open mechanism tested in acc. with EN 1155 Door closing sequence selector tested in acc. with EN 1158 | Door closer tested in acc. with EN 1154 Hold-open mechanism tested in acc. with EN 1155 |
| Suitable for fire and smoke doors | ● | ● |
| Mounting plate with hole pattern acc. to EN 1154 Supplement 1 | ● | ● |
| Length | 325 mm | |
| Installation depth | 46 mm | |
| Height | 60 mm | |
| | | |
| Functions | | |
| Adjustable closing force | ● Infinitely variable | |
| Adjustable closing speed | ● | ● |
| Adjustable latching action | ● Via link arm | |
| Integrated back check | ○ | |
| Closing force adjustment position | Front | |
| Optical closing force display | ● | ● |
| Safety valve featuring protection against vandalism | ● | ● |
| Thermo-constant valves | ● | ● |
| Integrated closing sequence control | ● | |
| Integrated hold-open mechanism | Electric | |
| Hold-open mechanism can be overridden | ● | ● |
| Hold-open angle | 80°-175° | |

● = yes

○ = no

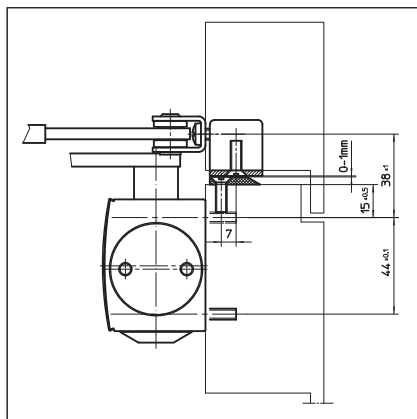
Door leaf mounting/hinge side TS 4000 E-IS

View

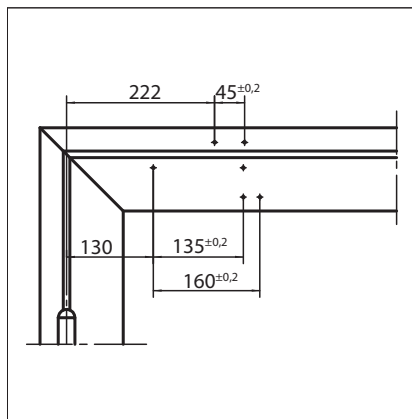


Mounting example for GEZE TS 4000 E-IS

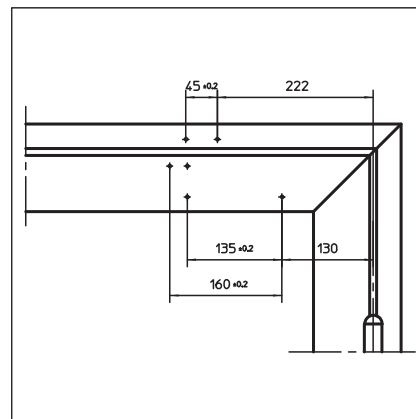
Direct mounting



Cross section = direct mounting

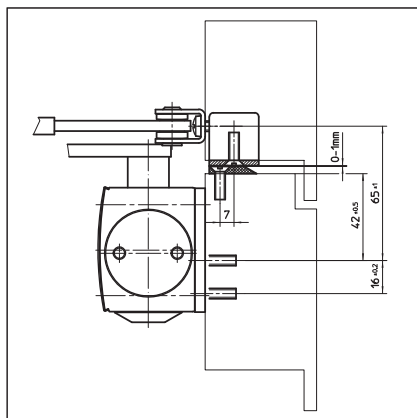


Fitting dimensions for left-hand door

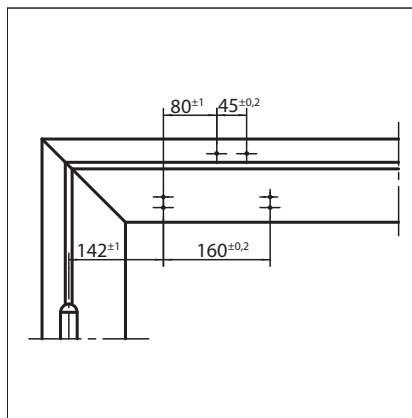


Fitting dimensions for right-hand door

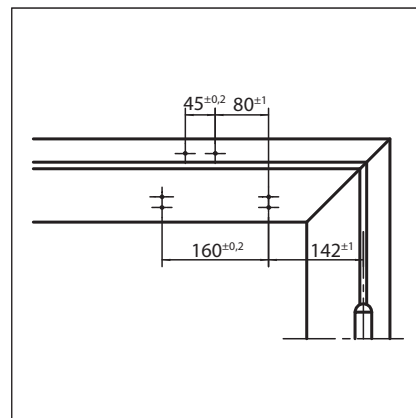
Mounting with mounting plate



Cross section = mounting with mounting plate



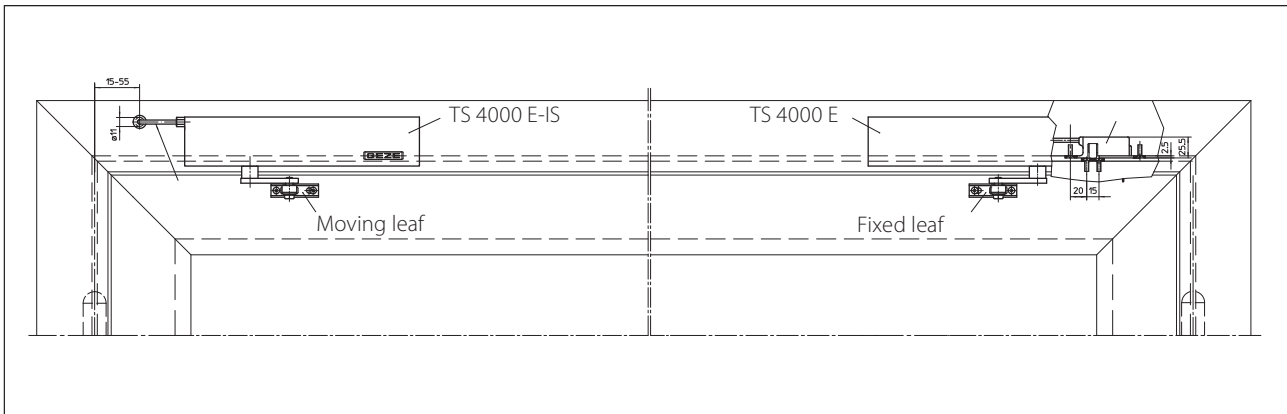
Fitting dimensions for left-hand door



Fitting dimensions for right-hand door

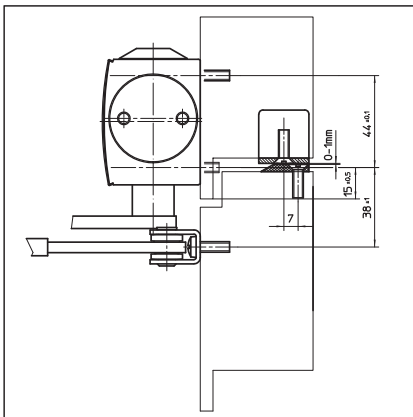
Transom mounting/opposite hinge side TS 4000 E-IS

View

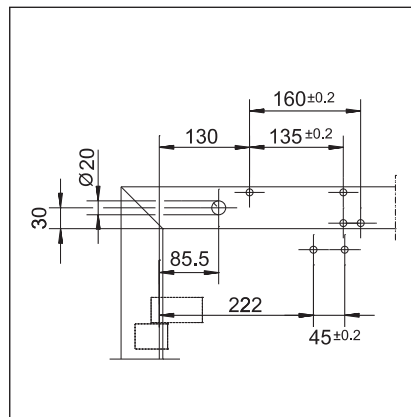


Mounting example for GEZE TS 4000 E-IS

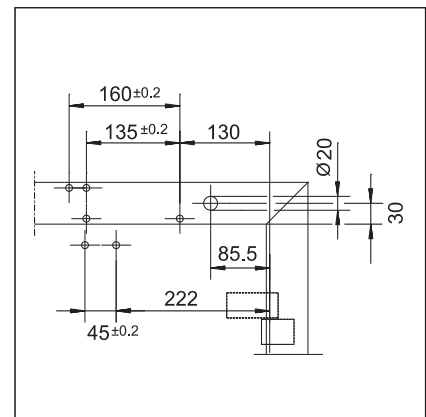
Direct mounting



Cross section = direct mounting

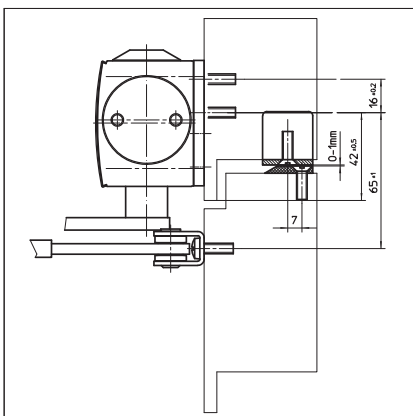


Fitting dimensions for right-hand door

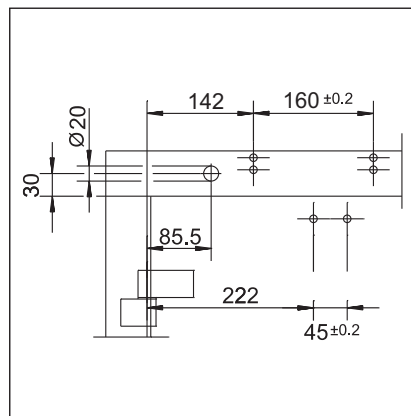


Fitting dimensions for left-hand door

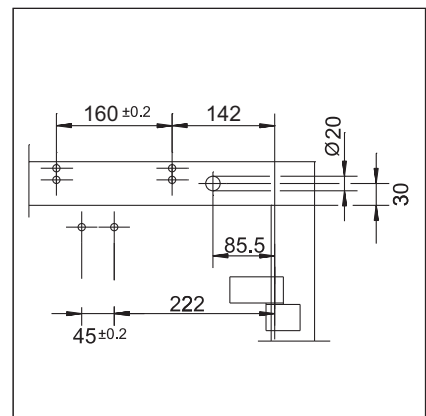
Mounting with mounting plate



Cross section = mounting with mounting plate



Fitting dimensions for right-hand door



Fitting dimensions for left-hand door

GEZE TS 4000 E-IS - Ordering information

| Designation | | Version | ID no. |
|---|-------|--------------------------------------|--------|
| GEZE TS 4000 E closer | | Silver-coloured | 105211 |
| Size EN 1-6, door leaf installation on hinge side, featuring electric hold-open and connector box (without link arm) | | Acc. to RAL ²⁾ | 105212 |
| GEZE TS 4000 E KM BG closer | | Silver-coloured | 105213 |
| Size EN 1-6, transom mounting on opposite hinge side, featuring electric hold-open (without link arm) | | Acc. to RAL ²⁾ | 105214 |
| GEZE TS 4000 E-IS closer | | Silver-coloured | 105237 |
| Size EN 1-6, door leaf installation on hinge side, featuring electric hold-open, connector box, integrated closing sequence control and mounting plate (without release mechanism and link arm) | | Acc. to RAL ²⁾ | 105238 |
| GEZE TS 4000 E-IS KM BG closer | | Silver-coloured | 105239 |
| Size EN 1-6, transom mounting on opposite hinge side, featuring electric hold-open, integrated closing sequence control and mounting plate (without link arm and connector box) | | Acc. to RAL ²⁾ | 105240 |
| Link arm TS 4000/2000 Extended, for transom mounting with a soffit depth of 70-170 mm | | Silver-coloured | 102431 |
| | | Dark bronze | 102432 |
| | | White RAL 9016 | 102433 |
| | | Acc. to RAL ²⁾ | 102434 |
| Link arm TS 4000/2000 Standard | | Silver-coloured | 102421 |
| | | Dark bronze | 102422 |
| | | White RAL 9016 | 102423 |
| | | Stainless steel effect ¹⁾ | 102426 |
| | | Acc. to RAL ²⁾ | 102425 |
| Installation material | | | |
| Spindle extension for TS 4000/TS 2000 Crown type connection | 10 mm | Galvanised | 103548 |
| | 10 mm | Black | 103677 |
| | 15 mm | Galvanised | 103549 |
| | 15 mm | Black | 103678 |
| | 20 mm | Galvanised | 103550 |
| | 20 mm | Black | 103679 |
| Door closer drilling template For TS 5000/4000/3000/2000 | | | 053134 |
| Link arm mounting plate For TS 4000/2000, with narrow rebates | | Silver-coloured | 057109 |
| | | Acc. to RAL ²⁾ | 082506 |
| Link arm mounting plate For TS 4000/2000, with parallel arm mounting | | Silver-coloured | 053318 |
| | | Dark bronze | 053319 |
| | | Acc. to RAL ²⁾ | 027460 |
| Door closer mounting plate For TS 5000 EFS/RFS/EHY / 4000 E with hole pattern acc. to DIN EN 1154 Supplement 1 | | Silver-coloured | 059107 |
| | | Acc. to RAL ²⁾ | 100044 |

GEZE SYSTEM TS 4000 / TS 2000 / TS 1500

Accessories

| | | |
|--|---|--------|
| Closing sequence control release mechanism For TS 4000 IS/E-IS/R-IS | No.1 hinge clearance 1200-1500 mm | 058306 |
| | No.2 hinge clearance 1500-1800 mm | 058307 |
| | No.3 hinge clearance 1800-2100 mm | 058308 |
| | No.4 hinge clearance 2100-2400 mm | 058309 |
| | No.5 hinge clearance 2400-2700 mm | 058310 |
| | No.6 hinge clearance in excess of 2700 mm | 058311 |
| GEZE smoke switch control unit RSZ 6 Approved for all GEZE hold-open mechanisms | Silver-coloured | 099851 |
| | Dark bronze | 099857 |
| | White RAL 9016 | 099858 |
| | Stainless steel effect ¹⁾ | 099856 |
| | Acc. to RAL ²⁾ | 099859 |
| GEZE smoke switch RS 5 For ceiling and lintel mounting | Silver-coloured | 027052 |
| | Dark bronze | 028939 |
| | White RAL 9016 | 028940 |
| | Stainless steel effect ¹⁾ | 028942 |
| | Acc. to RAL ²⁾ | 028941 |
| GEZE circuit breaker Concealed version, for manual release of electrically controlled door closers and retention magnets | Alpine white | 116266 |
| Surface-mounted socket Package | | 120503 |

1) Only suitable for dry rooms

2) Surcharge for special RAL colours, see general information

GEZE TS 4000 R-IS

Link arm door closer system for double-leaf doors with a hinge clearance up to 2800 mm featuring integrated closing sequence control, electric hold-open and smoke switch control unit

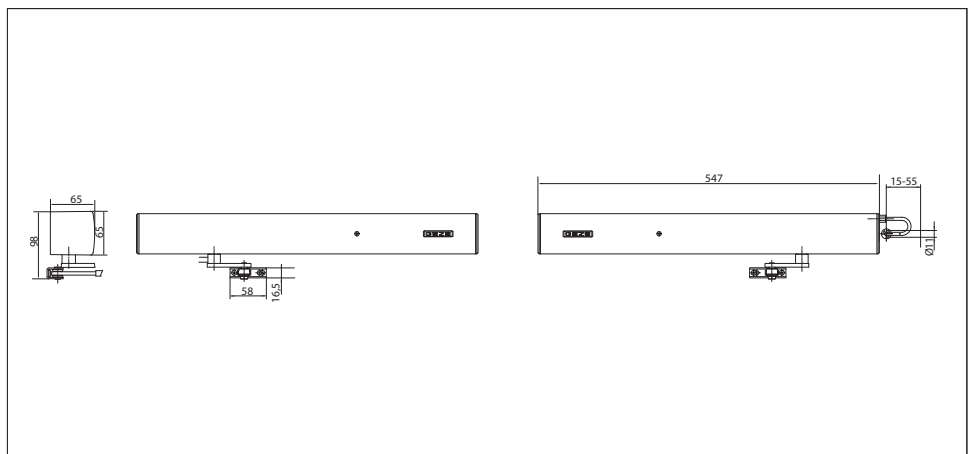
TS 4000 R-IS overhead door closer system, featuring integrated hydraulic closing sequence control, electric hold-open and integrated smoke switch control unit, is approved for mounting on fire and smoke doors. In the event of a fire, the smoke detector is activated and the door closes automatically. When used with double-leaf doors, the integrated closing sequence control ensures that both door leaves close in the correct order. When the door closes, the moving leaf remains in the waiting position until the fixed leaf is closed and until the moving leaf is released by the closing sequence control. The electric hold-open is infinitely variable between 80° and 175° in accordance with EN 1155.

The size 1-6 closing force to EN 1154, with optical size indicator and the closing speed can be adjusted from the front. The latching action is adjusted by means of the link arm. The product has been granted official building approval of a general nature by the DIBt (German Institute for Building Technology).

Special version:

- GEZE door closer TS 4000 R-IS second unit
Second unit (similar to TS 4000 R-IS), without smoke switch and power supply unit for direct connection to GEZE TS 4000 R-IS, for an identical "look". The product has been tested in accordance with the EN 1154 and EN 1155 standards.

GEZE TS 4000 R-IS



Application range

- For double-leaf doors, leaf width up to 1400 mm
- Compatible with left-hand and right-hand doors without the need for conversion
- For fire and smoke doors (door closers with mounting plate)
- Standard mounting involving transom mounting on opposite hinge side
- Transom mounting on hinge side possible with guide rail, closing force EN3, not approved for fire and smoke doors

GEZE SYSTEM TS 4000 / TS 2000 / TS 1500

Closer specifications

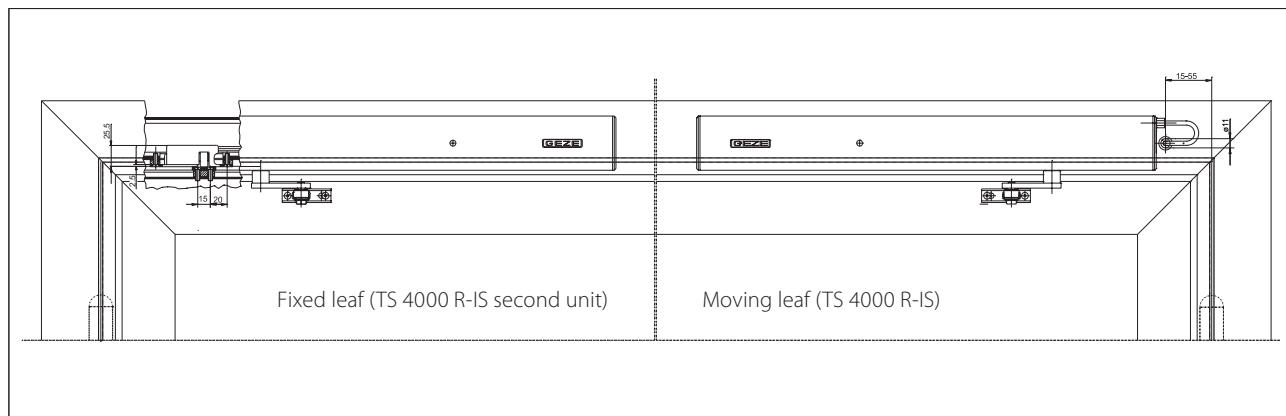
| Product features | | GEZE TS 4000 R-IS KM BG Closer | GEZE TS 4000 R-IS KM BG Closer second unit |
|---|--|---|--|
| Closing force to EN 1154 | | 1 - 6 | |
| Leaf width recommended up to | | 1400 mm | |
| Identical version DIN-L and DIN-R | | ● | ● |
| Supply voltage | | 230 V 50 Hz | 24 V |
| Enclosure rating IP | | IP 20 | |
| Product tested in acc. with | | Door closer tested in acc. with EN 1154 Hold-open mechanism tested in acc. with EN 1155 Door closing sequence selector tested in acc. with EN 1158 Official building approval of a general nature from the DIBt (German Institute for Building Technology) for use as a hold-open system | Door closer tested in acc. with EN 1154 Hold-open mechanism tested in acc. with EN 1155 |
| Suitable for fire and smoke doors | | ● | ● |
| Mounting plate with hole pattern acc. to EN 1154 Supplement 1 | | ● | ● |
| Length | | 547 mm | |
| Installation depth | | 65 mm | |
| Height | | 65 mm | |
| | | | |
| Functions | | | |
| Adjustable closing force | | ● Infinitely variable | |
| Adjustable closing speed | | ● | ● |
| Adjustable latching action | | ● Via link arm | |
| Integrated back check | | ○ | |
| Closing force adjustment position | | Front | |
| Optical closing force display | | ● | ● |
| Safety valve featuring protection against vandalism | | ● | ● |
| Thermo-constant valves | | ● | ● |
| Integrated closing sequence control | | ● | |
| Integrated hold-open mechanism | | Electric | |
| Hold-open angle | | 80°-175° | |
| Hold-open mechanism can be overridden | | ● | ● |
| Integrated smoke switch | | ● | |
| With visual status display | | ● | |
| With soiling indicator | | ● | |
| With adaption of the alarm threshold | | ● | |
| Integrated power supply unit | | ● | |

● = yes

○ = no

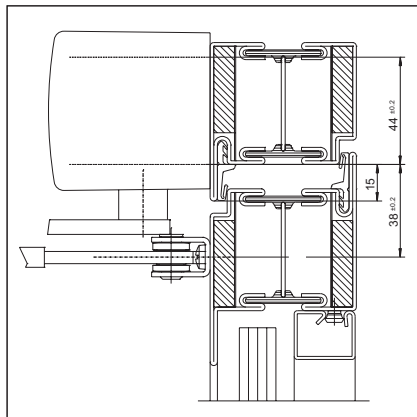
Transom mounting/opposite hinge side TS 4000 R-IS

View

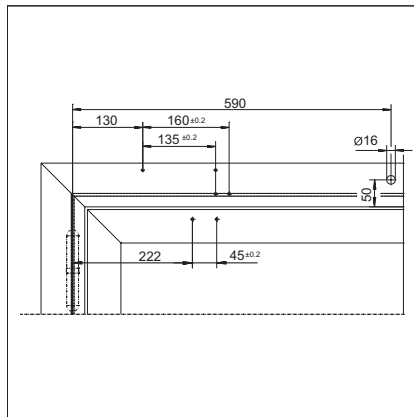


Mounting example for GEZE TS 4000 R-IS

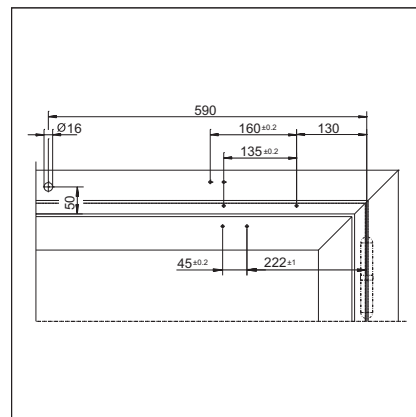
Direct mounting



Cross section = direct mounting

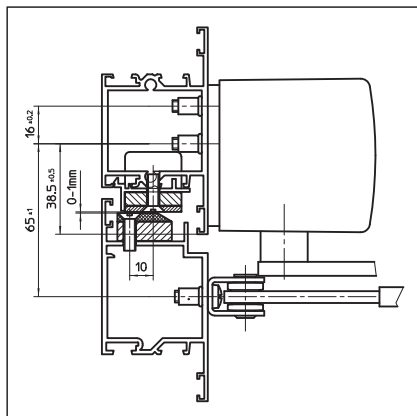


Fitting dimensions for right-hand door

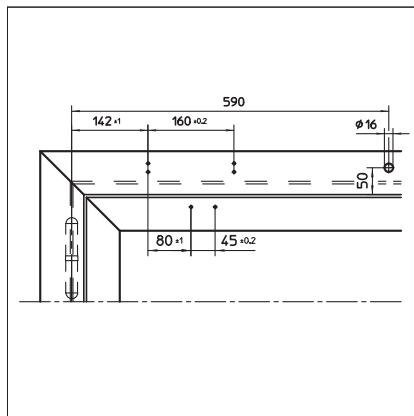


Fitting dimensions for left-hand door

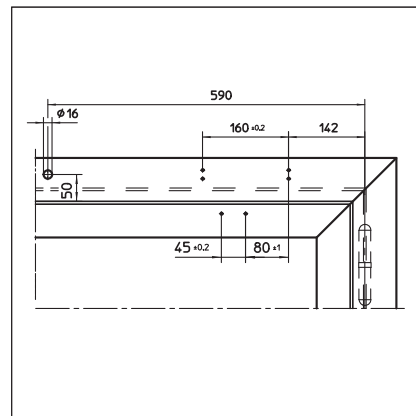
Mounting with mounting plate



Cross section = mounting with mounting plate

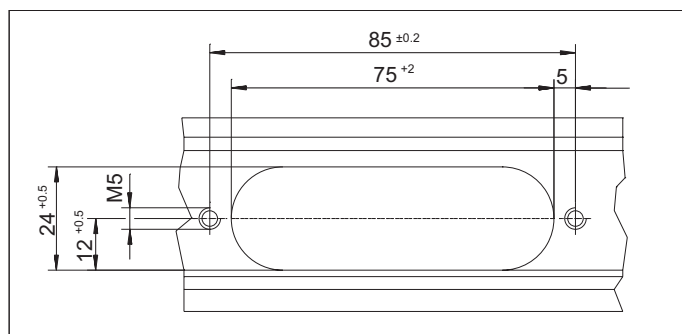


Fitting dimensions for right-hand door



Fitting dimensions for left-hand door

Recess for release mechanism



GEZE TS 4000 R-IS - Ordering information

| Designation | Version | ID no. |
|--|---|--------|
| GEZE TS 4000 R-IS KM BG closer | Silver-coloured | 105244 |
| Size EN 1-6, transom mounting on opposite hinge side, featuring integrated closing sequence control, electric hold-open and smoke switch control unit (without link arm and release mechanism) | Acc. to RAL ²⁾ | 105245 |
| GEZE TS 4000 R-IS KM BG closer second unit | Silver-coloured | 105246 |
| Size EN 1-6, transom mounting on opposite hinge side, featuring electric hold-open (without smoke switch control unit and link arm) | Acc. to RAL ²⁾ | 105247 |
| Link arm TS 4000/2000 Extended, for transom mounting with a soffit depth of 70-170 mm | Silver-coloured | 102431 |
| | Dark bronze | 102432 |
| | White RAL 9016 | 102433 |
| | Acc. to RAL ²⁾ | 102434 |
| Link arm TS 4000/2000 Standard | Silver-coloured | 102421 |
| | Dark bronze | 102422 |
| | White RAL 9016 | 102423 |
| | Stainless steel effect ¹⁾ | 102426 |
| | Acc. to RAL ²⁾ | 102425 |
| Installation material | | |
| Door closer mounting plate For TS 5000 RFS KM/4000 R & R-IS with hole pattern acc. to DIN EN 1154 Supplement 1 | Black | 058808 |
| Accessories | | |
| Closing sequence control release mechanism For TS 5000 IS/E-IS/R-IS | Nr.1 hinge clearance 1200-1500 mm | 058306 |
| | Nr.2 hinge clearance 1500-1800 mm | 058307 |
| | Nr.3 hinge clearance 1800-2100 mm | 058308 |
| | Nr.4 hinge clearance 2100-2400 mm | 058309 |
| | Nr.5 hinge clearance 2400-2700 mm | 058310 |
| | Nr.6 hinge clearance in excess of 2700 mm | 058311 |
| GEZE smoke switch RS 5 For ceiling and lintel mounting | Silver-coloured | 027052 |
| | Dark bronze | 028939 |
| | White RAL 9016 | 028940 |
| | Stainless steel effect ¹⁾ | 028942 |
| | Acc. to RAL ²⁾ | 028941 |
| GEZE circuit breaker Concealed version, for manual release of electrically controlled door closers and retention magnets | Alpine white | 116266 |
| Surface-mounted socket Package | | 120503 |

1) Only suitable for dry rooms

2) Surcharge for special RAL colours, see general information

GEZE TS 4000 Tandem

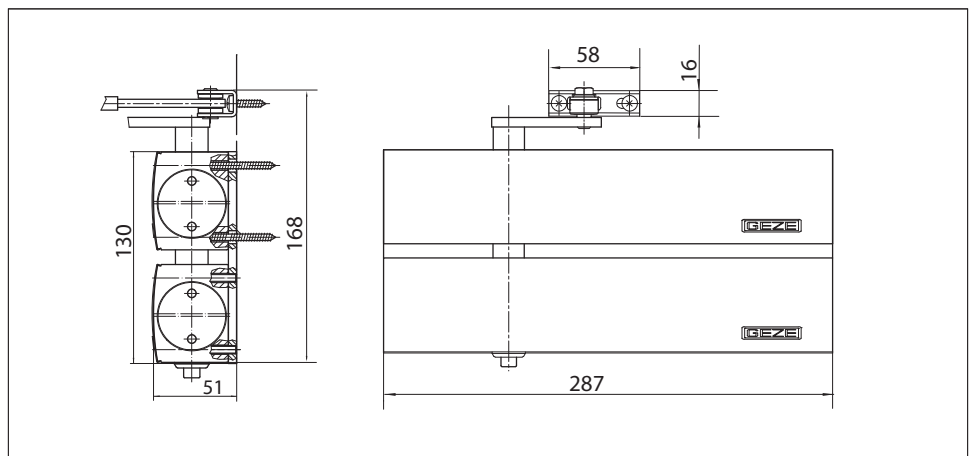
Link arm door closer for single-leaf doors/gates with a leaf width in excess 1600 mm or that are extremely heavy

Combination of a TS 4000 EN 5-7 and a TS 4000 EN 1-6 on an adapter plate with a shared spindle. Closing force > EN 7, for use with extremely large and heavy doors or gates. The individual products have been tested in accordance with the EN 1154 standard.

Special version:

- GEZE TS 4000 tandem wet room version
Same as TS 4000 tandem, but with specially nickel-plated spindle and bearing shells, plus stainless steel screw accessories for aggressive environments.

GEZE TS 4000 tandem



Application range

- For single-action doors, leaf width > 1600 mm
- Compatible with left-hand and right-hand doors (conversion required)
- For fire and smoke doors (door closers with mounting plate)
- Standard mounting on door leaf, hinge side; transom mounting on opposite hinge side also possible
- Can be installed on door leaf on opposite hinge side with parallel arm mounting

Closer specifications

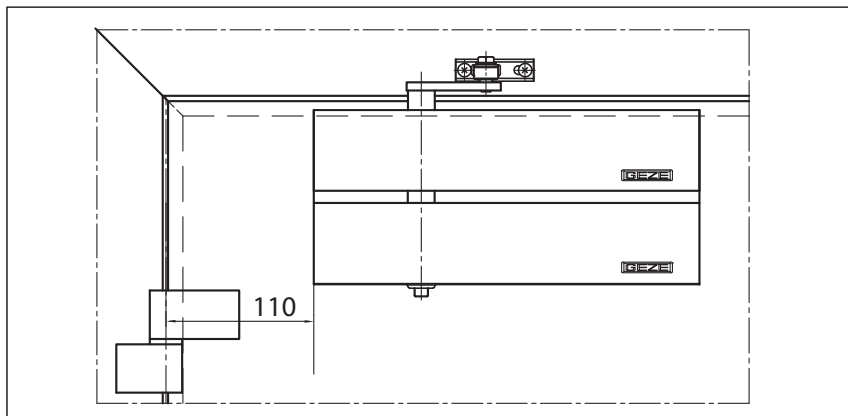
| Product features | GEZE TS 4000 tandem complete package |
|---|---|
| Identical version DIN-L and DIN-R | ● |
| Product tested in acc. with | Door closer tested in acc. with EN 1154 |
| Suitable for fire and smoke doors | ● |
| Mounting plate with hole pattern acc. to EN 1154 Supplement 1 | ● |
| Length | 287 mm |
| Installation depth | 51 mm |
| Height | 130 mm |
| Functions | |
| Adjustable closing force | ● Infinitely variable |
| Adjustable closing speed | ● |
| Adjustable latching action | ● Via link arm |
| Integrated back check | ● Hydraulically adjustable |
| Closing force adjustment position | Front |
| Optical closing force display | ● |
| Safety valve featuring protection against vandalism | ● |
| Thermo-constant valves | ● |

● = yes

○ = no

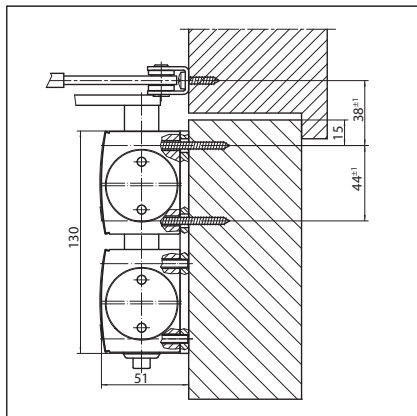
Door leaf mounting/hinge side TS 4000 tandem

View

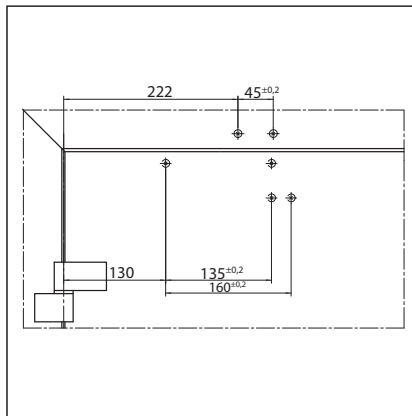


Mounting example for GEZE TS 4000 tandem

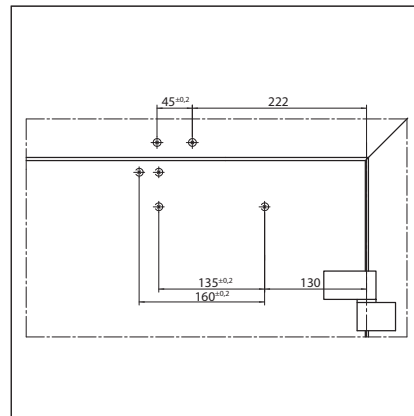
Direct mounting



Cross section = direct mounting

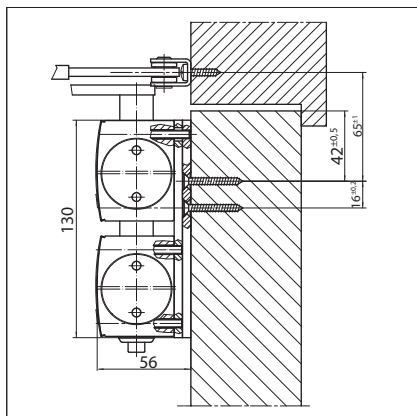


Fitting dimensions for left-hand door

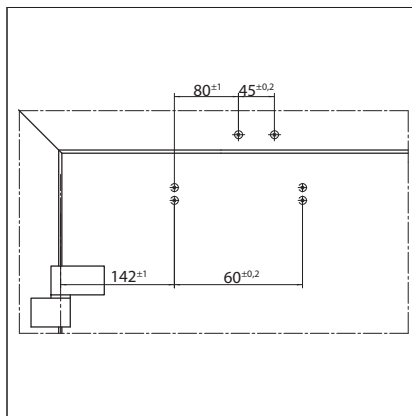


Fitting dimensions for right-hand door

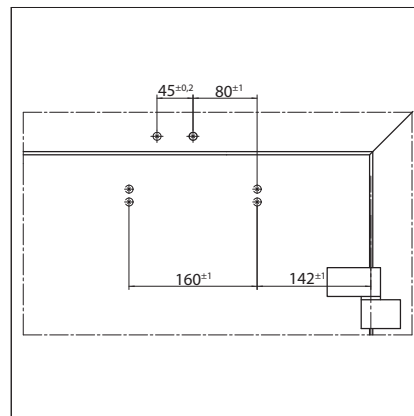
Mounting with mounting plate



Cross section = mounting with mounting plate



Fitting dimensions for left-hand door



Fitting dimensions for right-hand door

GEZE TS 4000 tandem - Ordering information

| Designation | Version | ID no. |
|--|---------------------------|--------|
| GEZE TS 4000 tandem complete package With back check, featuring standard link arm | Silver-coloured | 102841 |
| | Acc. to RAL ¹⁾ | 116186 |
| Link arm TS 4000/2000 Extended, for transom mounting with a soffit depth of 70-170 mm | Silver-coloured | 102431 |
| | Dark bronze | 102432 |
| | White RAL 9016 | 102433 |
| | Acc. to RAL ¹⁾ | 102434 |
| GEZE TS 4000 tandem wet room version complete package With back check, special protection against corrosion with stainless steel screw accessories and standard link arm | Silver-coloured | 120105 |
| Installation material | | |
| Spindle extension for TS 4000/TS 2000 Crown type connection | 10 mm Galvanised | 103548 |
| | 10 mm Black | 103677 |
| | 15 mm Galvanised | 103549 |
| | 15 mm Black | 103678 |
| | 20 mm Galvanised | 103550 |
| | 20 mm Black | 103679 |
| Door closer drilling template For TS 5000/4000/3000/2000 | | 053134 |
| Link arm mounting plate For TS 4000/2000, with narrow rebates | Silver-coloured | 057109 |
| | Acc. to RAL ¹⁾ | 082506 |
| Link arm mounting plate For TS 4000/2000, with parallel arm mounting | Silver-coloured | 053318 |
| | Dark bronze | 053319 |
| | Acc. to RAL ¹⁾ | 027460 |
| Door closer mounting plate For TS 4000 tandem with hole pattern acc. to DIN EN 1154 Supplement 1 | Silver-coloured | 105119 |
| | Acc. to RAL ¹⁾ | 116189 |

¹⁾ Surcharge for special RAL colours, see general information

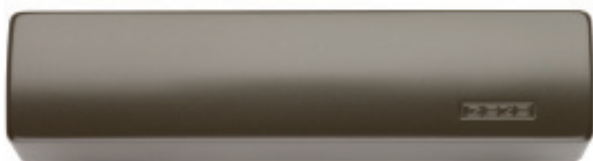
Cover caps for GEZE door closers

The following cover caps are available for the TS 2000 and TS 4000 overhead door closers:

- Silver-coloured



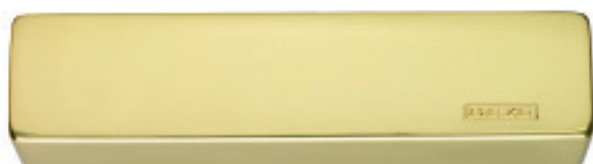
- Dark bronze



- White RAL 9016



- Polished brass



- Stainless steel



Other RAL colours are available on request.

Product information for door closers

Due to the liability the manufacturer has for its products under the German product liability law (§ 4 Prod-HaftG), the following information regarding door closers for swing doors must be observed. Non-compliance discharges the manufacturer from its liability.

1) Product information and use as intended

Within this context, door closers are to be defined as products for closing swing doors after they have been opened manually. The closing action is dampened using a hydraulically adjustable feature. The level of closing force required for specific leaf widths is defined in EN 1154. In the case of non-standard applications, the details provided by the manufacturer are to be regarded as definitive. Door closers are used on internal swing doors made from metal, timber or plastic and combinations thereof. When used on fire and smoke doors or other standardised self-closing doors, they are subject to strict requirements in terms of the type of installation and their position. Any deviation from these requirements constitutes improper use.

Proper use of door closers (use as intended) relies on doors being installed perpendicular and their being able to move smoothly; it is also dependent on the door closers being properly secured. The products must be installed and adjusted professionally in accordance with the manufacturer's specifications.

Where local conditions are particularly unfavourable (wind), door closers with higher torques must be used.

It is particularly important to use door closers with a back check function on swing doors that are exposed to wind when opening outwards.

The back check function helps protect people, door elements, plus nearby walls and objects, without restricting the door opening angle. If the structural conditions of the door are such that there is a risk of the door leaf hitting the frame in the vicinity of the door's axis of rotation, a buffer must be installed to limit the door's maximum opening angle. If swing doors are to be fixed in the open position, this may only be achieved using special additional fittings or integrated constructional elements. When used with fire and smoke doors, the devices must be officially approved by the German Institute for Building Technology (door suitability certificates must be heeded).

Door closers are not suitable for installation on swing doors in the case of unprotected exterior mounting or for installation in environments where the air contains aggressive, corrosive substances or in extremely high or low temperatures.

Following installation, enclosures for floor-mounted door closers must be protected against soiling. If floor-mounted door closers are exposed to penetrating water (e.g. wet rooms or external doors with no protection from the rain), the area between the cement box and the door closer cover must be sealed with a suitable sealing compound.

Compliance with mandatory statutory provisions must be ensured, where applicable, before door closers (including any additional devices) are installed and commissioned.

2) Misuse

Misuse (i.e. improper use of door closer products for swing doors) includes, in particular:

- The presence of obstacles in the closing area, scraping doors, sticking seals, wooden wedges, etc. that hinder the door's closing action
- Incorrect or improper mounting and/or adjustment
- Reaching into the area between the door frame and leaf (risk of injury)
- If the warranted properties are likely to trigger proper functioning, e.g. in the event of storms or unusual levels of overpressure or underpressure acting on the door

- If door closers are used for any purpose other than closing doors
- If the selected door closer size does not tally with the manufacturer's recommendations

3) Product performance

Where catalogues, brochures, manuals, etc. do not contain specific details of product performance, special requirements must be discussed and agreed with the manufacturer.

The EN 1154 standards serve as a guideline. These standards stipulate the vast majority of basic and additional requirements. Amongst other things, the usability of door closers depends on how often they are operated, how they are operated, environmental influences and how they are cared for. Door closers must be replaced as soon as the door's closing action can no longer be guaranteed to be fault-free and reliable.

4) Product maintenance

Safety-related components of door closers must be checked regularly for tightness and signs of wear (depending on what the requirements are). Fixing screws must be re-tightened and defective components replaced. In addition, the following maintenance work must be carried out at least once a year (depending on the swing door type and extent of use):

- Grease all moving parts on the link arm
- In the case of door closers with special functions (hold-open mechanisms and hold-open devices), ensure compliance with statutory inspections, monitoring requirements and suggested maintenance intervals
- Check the closer settings, e.g. the closing speed
- Check that the door is able to move easily

Do not use any cleaning agents that contain corrosive or damaging ingredients.

5) Duties to inform and instruct

The following resources are available to help planners, specialist suppliers, installers, builders and users fulfil their duties of information and instruction:

- Catalogues, brochures, leaflets,
- Specification texts and bidding documents
- Attachment instructions, installation drawings, operating instructions, standards
- Advice from field staff

To ensure correct use of door closers on swing doors, guarantee their function and make sure they are maintained and cared for appropriately:

- Architects and planners are advised to order and observe the necessary product information
- Specialist suppliers are advised to observe the product information and advice in the price lists and, in particular, to order all relevant instructions, which are to be passed on to the installer
- Installers are advised to observe all the product information and to pass it on to the client and user

GEZE GmbH
P.O. Box 1363
71226 Leonberg
Germany

GEZE GmbH
Reinhold-Vöster-Straße 21-29
71229 Leonberg
Germany
Telefon +49 (0) 7152-203-0
Telefax +49 (0) 7152-203-310

www.geze.com

Germany
 GEZE Sonderkonstruktionen GmbH
 Planken 1
 97944 Boxberg-Schweigern
 Tel. +49 (0) 7930-92 94-0
 Fax +49 (0) 7930-92 94-10
 E-Mail: sk.de@geze.com

GEZE GmbH
 Niederlassung Nord/Ost
 Bühringstraße 8
 13086 Berlin (Weissensee)
 Tel. +49 (0) 30-47 89 90-0
 Fax +49 (0) 30-47 89 90-17
 E-Mail: berlin.de@geze.com

GEZE GmbH
 Niederlassung West
 Nordsternstraße 65
 45329 Essen
 Tel. +49 (0) 201-83 082-0
 Fax +49 (0) 201-83 082-20
 E-Mail: essen.de@geze.com

GEZE GmbH
 Niederlassung Mitte
 Adenauerallee 2
 61440 Oberursel (b. Frankfurt)
 Tel. +49 (0) 6171-63 610-0
 Fax +49 (0) 6171-63 610-1
 E-Mail: frankfurt.de@geze.com

GEZE GmbH
 Niederlassung Süd
 Breitwiesenstraße 8
 71229 Leonberg
 Tel. +49 (0) 7152-203-594
 Fax +49 (0) 7152-203-438
 E-Mail: leonberg.de@geze.com

GEZE Service GmbH NL Südwest
 Reinhold-Vöster-Straße 25
 71229 Leonberg
 Tel. +49 (0) 7152-92 33 34

GEZE Service GmbH NL Nord-Ost
 Bühringstraße 8
 13086 Berlin (Weissensee)
 Tel. +49 (0) 30-47 02 17 32

GEZE Service GmbH NL West
 Nordsternstraße 65
 45329 Essen
 Tel. +49 (0) 201-8 30 82 16

GEZE Service GmbH NL Mitte
 Feldbergstraße 59
 61440 Oberursel
 Tel. +49 (0) 6171-63 327-0

GEZE Service GmbH NL Süd
 Parkring 17
 85748 Garching bei München
 Tel. +49 (0) 89-120 07 42-0

Austria
 GEZE Austria
 Wiener Bundesstrasse 85
 A-5300 Hallwang
 Tel: +43/6225/87180
 Fax: +43/6225/87180-299
 E-Mail: austria.at@geze.com

Baltic States
 GEZE GmbH Baltic States office
 Dzelzavas iela 120 S
 1021 Riga
 Tel. +371 (0) 67 89 60 35
 Fax +371 (0) 67 89 60 36
 E-Mail: office-latvia@geze.com

Benelux
 GEZE Benelux B.V.
 Leemkuil 1
 Industrierrein Kapelbeemd
 5626 EA Eindhoven
 Tel. +31 (0) 40-26 290-80
 Fax +31 (0) 40-26 290-85
 E-Mail: benelux.nl@geze.com

Bulgaria
 GEZE Bulgaria - Trade
 Representative Office
 61 Pirinski Prohod, entrance „B“,
 4th floor, office 5,
 1680 Sofia
 Tel. +359 (0) 24 70 43 73
 Fax +359 (0) 24 70 62 62
 E-Mail: office-bulgaria@geze.com

China
 GEZE Industries (Tianjin) Co., Ltd.
 Shuangchenzhong Road
 Beichen Economic Development
 Area (BEDA)
 Tianjin 300400, P.R. China
 Tel. +86 (0) 22-26 97 39 95-0
 Fax +86 (0) 22-26 97 27 02
 E-Mail: Sales-info@geze.com.cn

GEZE Industries (Tianjin) Co., Ltd.
 Branch Office Shanghai
 Unit 25N, Cross Region Plaza
 No 899, Ling Ling Road,
 XuHui District
 200030 Shanghai, P.R. China
 Tel. +86 (0) 21-523 40 960
 Fax +86 (0) 21-644 72 007
 E-Mail: chinasales@geze.com.cn

GEZE Industries (Tianjin) Co., Ltd.
 Branch Office Guangzhou
 Room 17C3
 Everbright Bank Building, No.689
 Tian He Bei Road
 510630 Guangzhou
 P.R. China
 Tel. +86 (0) 20-38 73 18 42
 Fax +86 (0) 20-38 73 18 34
 E-Mail: chinasales@geze.com.cn

GEZE Industries (Tianjin) Co., Ltd
 Branch Office Beijing
 Room 1001, Tower D
 Sanlitun SOHO
 No. 8, Gongti North Road,
 Chaoyang District
 100027 Beijing, P.R.China
 Tel. +86 (0) 10-59 35 93 00
 Fax +86 (0) 10-59 35 93 22
 E-Mail: chinasales@geze.com.cn

France
 GEZE France S.A.R.L.
 ZAC de l'Orme Rond
 RN 19
 77170 Servon
 Tel. +33 (0) 1-60 62 60-70
 Fax +33 (0) 1-60 62 60-71
 E-Mail: france.fr@geze.com

Hungary
 GEZE Hungary Kft.
 Bartók Béla út 105-113.
 Budapest
 H-1115
 Tel. +36 (1) 481 4670
 Fax +36 (1) 481 4671
 E-Mail: office-hungary@geze.com

Iberia
 GEZE Iberia S.R.L.
 Pol. Ind. El Pla
 C/Comerc, 2-22, Nave 12
 08980 Sant Feliu de Llobregat
 (Barcelona)
 Tel. +34 9-02 19 40 36
 Fax +34 9-02 19 40 35
 E-Mail: info@geze.es

India
 GEZE India Private Ltd.
 MF 2 & 3, Guindy Industrial Estate
 Ekkattuthangal
 Chennai 600 097
 Tamilnadu
 Tel. +91 (0) 44 30 61 69 00
 Fax +91 (0) 44 30 61 69 01
 E-Mail: office-india@geze.com

Italy
 GEZE Italia Srl
 Via Giotto, 4
 20040 Cambiago (MI)
 Tel. +39 (0) 29 50 695-11
 Fax +39 (0) 29 50 695-33
 E-Mail: italia.it@geze.com

GEZE Engineering Roma Srl
 Via Lucrezia Romana, 91
 00178 Roma
 Tel. +39 (0) 6-72 65 311
 Fax +39 (0) 6-72 65 3136
 E-Mail: roma@geze.biz

Poland
 GEZE Polska Sp.z o.o.
 ul. Annapol 21
 03-236 Warszawa
 Tel. +48 (0) 22 440 4 440
 Fax +48 (0) 22 440 4 400
 E-Mail: geze.pl@geze.com

Romania
 GEZE Romania s.r.l.
 IRIDE Business Park,
 Str. Dimitrie Pompeiu nr. 9-9a,
 Building 10, Level 2, Sector 2,
 020335 Bucharest
 Tel.: +40 (0) 21 25 07 750
 Fax: +40 (0) 21 25 07 750
 E-Mail: office-romania@geze.com

Russian Federation
 GEZE GmbH Representative
 Office Russia
 Kolodesnij pereulok3, str. 25
 Office Nr. 5201-5203
 107076 Moskau
 Tel. +7 (0) 49 55 89 90 52
 Fax +7 (0) 49 55 89 90 51
 E-Mail: office-russia@geze.com

Scandinavia – Sweden
 GEZE Scandinavia AB
 Mallslingan 10
 Box 7060
 18711 Täby, Sweden
 Tel. +46 (0) 8-7323-400
 Fax +46 (0) 8-7323-499
 E-Mail: sverige.se@geze.com

Scandinavia – Norway
 GEZE Scandinavia AB avd. Norge
 Industriveien 34 B
 2073 Dal
 Tel. +47 (0) 639-57 200
 Fax +47 (0) 639-57 173
 E-Mail: norge.se@geze.com

Scandinavia – Finland
 Branch office of GEZE Scandinavia AB
 Herrlantie 824
 Postbox 20
 15871 Hollola
 Tel. +358 (0) 10-40 05 100
 Fax +358 (0) 10-40 05 120
 E-Mail: finland.se@geze.com

Scandinavia – Denmark
 GEZE Danmark
 Branch office of GEZE Scandinavia AB
 Mårkærvej 13 J-K
 2630 Taastrup
 Tel. +45 (0) 46-32 33 24
 Fax +45 (0) 46-32 33 26
 E-Mail: danmark.se@geze.com

South Africa
 DCLSA Distributors (Pty.) Ltd.
 118 Richards Drive, Halfway House,
 Ext 111
 P.O. Box 7934, Midrand 1685
 Tel. +27 (0) 1131 58 286
 Fax +27 (0) 1131 58 261
 E-Mail: info@dclsa.co.za

Switzerland
 GEZE Schweiz AG
 Bodenackerstrasse 79
 4657 Dulliken
 Tel. +41 (0) 62-285 54 00
 Fax +41 (0) 62-285 54 01
 E-Mail: schweiz.ch@geze.com

Turkey
 GEZE GmbH Türkiye - İstanbul
 İrtibat Bürosu
 Ataşehir Bulvarı, Ata 2/3
 Plaza Kat: 9 D: 84 Ataşehir
 Kadıköy / İstanbul
 Tel. + 90 (0) 21 64 55 43 15
 Fax + 90 (0) 21 64 55 82 15
 E-Mail: office-turkey@geze.com

Ukraine
 GEZE Ukraine TOV
 ul. Viskoznaya, 17,
 Building 93-B, Office 12
 02094 Kiev
 Tel./Fax +38 (0) 44 501 22 25
 Tel. +38 (0) 44 499 77 25
 E-Mail: office-ukraine@geze.com

United Arab Emirates/GCC
 GEZE Middle East
 P.O. Box 17903
 Jebel Ali Free Zone
 Dubai
 Tel. +971 (0) 4-88 33 112
 Fax +971 (0) 4-88 33 240
 E-Mail: geze@emirates.net.ae

United Kingdom
 GEZE UK Ltd.
 Blenheim Way
 Fradley Park
 Lichfield
 Staffordshire WS13 8SY
 Tel. +44 (0) 1543 44 30 00
 Fax +44 (0) 1543 44 30 01
 E-Mail: info.uk@geze.com

GEZE REPRESENTATIVE