

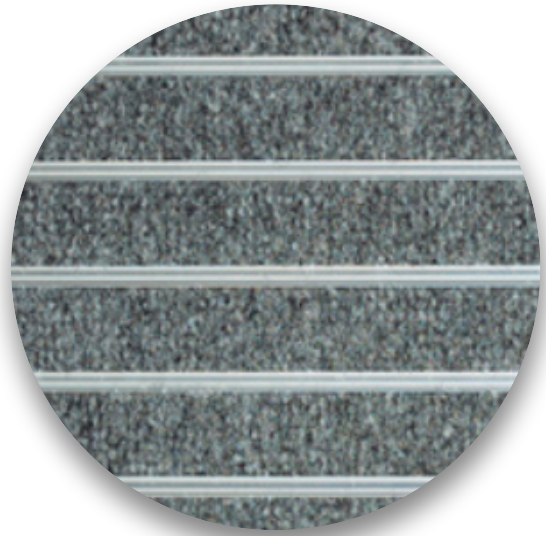
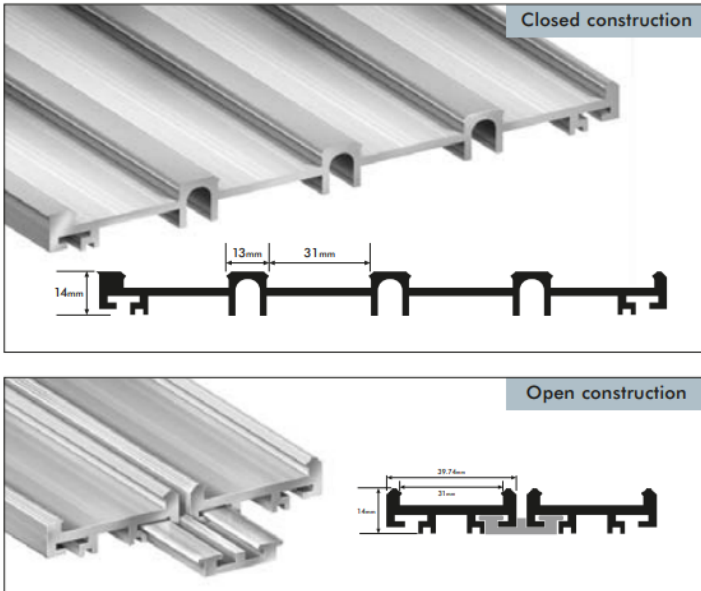


Jaymart

Street King Aluminium Entrance Matting Information & Specification

Designed with very heavy duty U.V and rot resistant inserts offering optimal resistance for brushing and drying action for internal/ external sheltered applications in a very heavy duty aluminium scraper system for extremely heavy use applications.

Street King Aluminium Entrance Matting System



A prestigious heavy duty matting, with superior moisture absorbency properties. Consisting of alternating silver aluminum ridged scraper sections with channeled replaceable 13mm Contract King available in 4 colours

Street- Beater matting is designed for use in indoor and outdoor entrances such as airports, shopping centres, railway stations, shops, public buildings, schools, offices, hotels, leisure centres, banks and hospitals.

The matting can be supplied in virtually any size or shape but for reasons of safe handling it is recommended that mat sections, which can be butted together, do not exceed 2m². It is available in standard 22mm in single or alternating colours from a colourway of four colours.

The following constructions are available:

Closed construction – for normal interior entrance areas

Open construction – for external or excessively wet areas

The Jaymart system allows for perfect rib alignment without the need for T Bars.

Consult Jaymart Rubber & Plastics Ltd technical literature for details of the finishes available.

Jaymart Rubber & Plastics Ltd can also provide a design and specification service and it is recommended that they be consulted early in the design process.



Proudly Manufactured in The UK



100% Recycled Aluminium



Street Beater Complies with BS 8300 - 2:2018 for an inclusive and accessible environment

Wheel Chair Friendly

22mm
Gauge



Key Features

They trap up to 90% of dirt and moisture, therefore reducing cleaning costs and use of harmful cleaning chemicals

They help to protect the expensive floor finishes reducing the amount sent to landfill.

The panel construction, which allows for rib alignment between panels, renders them stronger than wired construction types which can snap or bend. This also facilitates replacement of insert strips in the unlikely event of damage or desire to change colour scheme. Leading to a useful lifespan of 30 years when refurbished.

This also allows for more elaborate designs to be incorporated if required.

The Insert materials can be customised to maximise performance of the product and if required to make a statement upon entering the building.

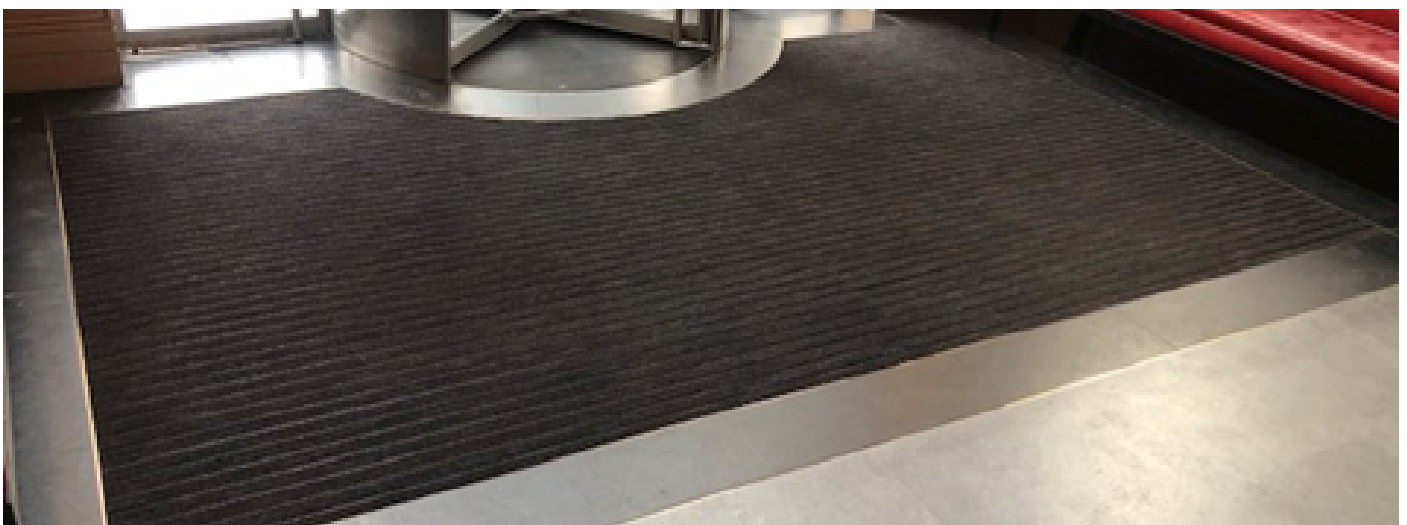
Logos can easily be incorporated into the mat at very reasonable costs.

They can be surface mounted or installed in a recessed matwell.

The mats incorporate 100% Recycled Aluminium and are also easy to recycle after useful life, and so are an environmentally friendly product.

Now can be anodised in colours including antique bronze and black.

10 year warranty.





Our 4 step process to a cleaner environment

Step 1

The best way to keep your premises clean is to stop dirt from even getting through the front door. Effective exterior matting scrapes clean and wipes dry, leaving the worst dirt and grit outside, and allowing subsequent interior matting to clean even better.

Step 2

Working in a similar way to exterior matting, this is similarly tough and durable matting that carries on the work to remove the last of the most damaging soil and grit, and continue the drying process.

Step 3

With the worst of the damp and debris now dealt with, secondary internal matting is a high-specification, high-performance product that finishes the dusting and drying.

Step 4

The foyer is one of the highest traffic areas in your building so, however effective your entrance matting, easy to clean, highly durable and attractive carpet that always looks its best will help you make a great first impression – every time.

Environmental Impact & Sustainability

Our Products Use 100% recycled aluminium and can be recycled after use making our aluminium mat products very environmentally friendly. This combined with the ability to replace the insert material rather than replacing the whole mat, means that although not directly eligible for BREEAM Credits selecting Jaymart will help in supporting your BREEAM certification.

We manufacture in the United Kingdom to precise specifications/ measurements. This means Jaymart can reduce waste and transport.

Our products are extremely Hard wearing and will reduce the need for frequent replacement to support BREEAM MAT 05 criteria and also minimise the use of harmful cleaning chemicals and cleaning/ maintenance costs for the end user.

BREEAM MAT 01 addresses the environmental impact through the life cycle of the product. The Jaymart aluminium entrance matting system have the ability to refurbish rather than replace means that our products can further support your aims. It will also help with meeting BREEAM MAT 06 requirements. We can also offer products made from natural inserts from sustainable sources to further meet environmental aims. The expected useful lifespan when refurbished is 30 years approximately dependent on wear and correct maintenance being carried out.



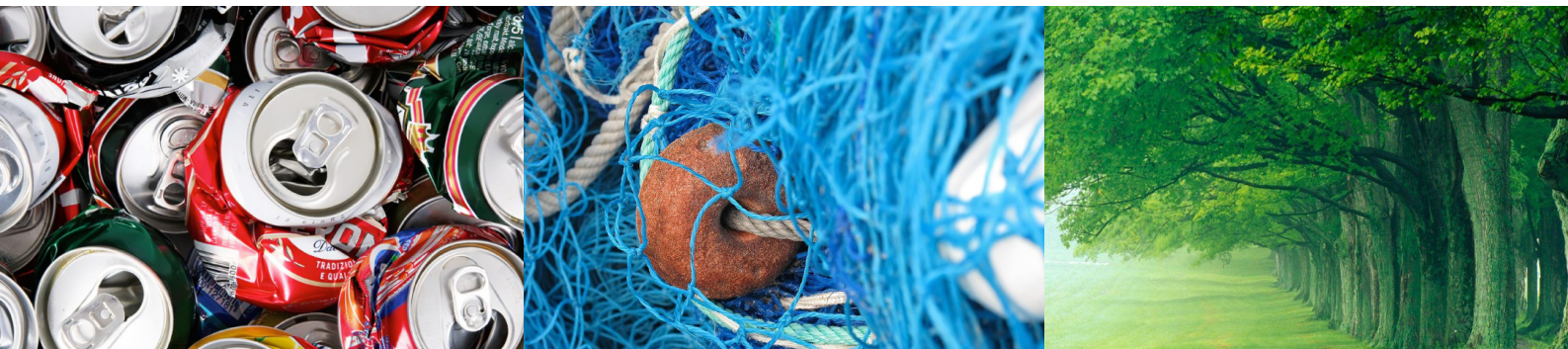
Manufactured in United Kingdom



100% Recycled Aluminium



100% Econyl Recycled Nylon Yarn



Street King Specification

Typical Specification

N10

General Fixtures/ Furnishings/ Equipment

300

Entrance Matting

40

Miscellaneous Fittings

Manufacturer

Jaymart Rubber & Plastics Ltd

Roman Way Crusader Park Warminster Wiltshire BA12 BSP

Tel: 01985 218994 Fax: 01985 217417

email : sales@jaymart.co.uk Web: www.jaymart.co.uk

Application

Internal and External Extremely Heavy Traffic Areas

DDA Compliant can be used in conjunction with wheelchairs and shopping trolleys.

Closed and Open Construction Heel Safe

Aluminium Finishes Available

Standard Mill Finish & Anodised Finishes (Special Order)

Composition

Made from 100% Recycled Aluminium

Thickness/ Depth

22mm

Weight

20 Kg per m²

Construction

Closed and Open Construction Panel System

Pile Type

100% polypropylene heavy duty polypropylene brush fibre bonded inserts (REPLACEABLE INSERTS) - UV and rot resistant

Warranty/ Guarantee

10 Year Subject to correct Maintenance and Cleaning procedures being carried out

Slip Rating

>PTV 36

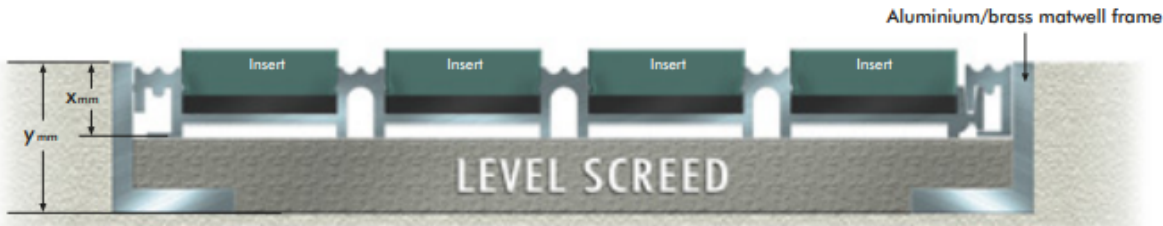
Fixing

Street King can be surface mounted or in a recessed matwell

Size

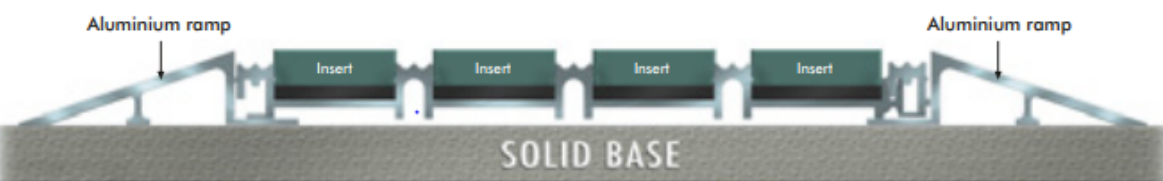
Specify size and shape but matting should be ordered in sections maximum width 3m wide. Panel sections allow for designs

Recessed matwell sample



Matting Type	Recommended Frame Section (Y)	Finished Recess Depth (X) (Dependent on gauge of your choice of insert material)	Surface Mounted Ramping
Street Range Low Profile	32 x 32 x 5mm	16-20mm	Safe-T-Edge
Street Range Standard	32 x 32 x 5mm	20-22mm	Bevalu II
Buffer Zone Range	32 x 32 x 5mm	16-20mm	Safe-T-Edge
Alligator Range	32 x 32 x 5mm	14-20mm	Safe-T-Edge
Grime Range	25 x 25 x 5mm	11-17mm	Alu-Ramp
Grime Rail Firefighter	38 x 38 x 6mm (special section)	14-15mm	Safe-T-Edge

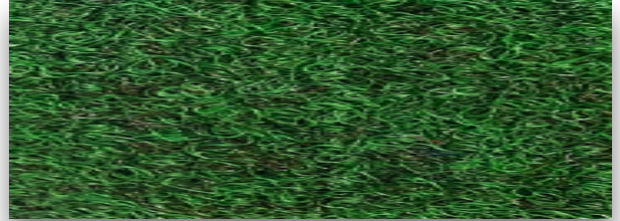
Ramped sample



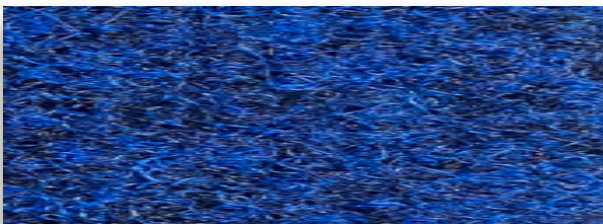
Colours Available



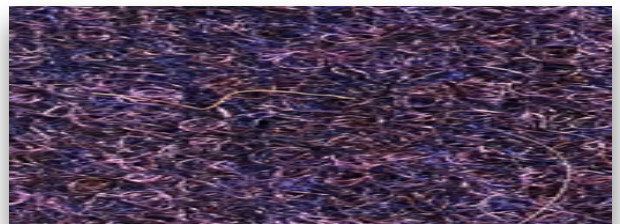
Anthracite



Green



Blue



Purple

The polypropylene insert strips are tested to and certified to GUT European standards for chemical emissions. The tests are carried out to certify:

1. Environmental compatible production
2. The absence of any contaminants
3. Minimal emissions and odours in new carpet
4. Recycling of scrapped carpet and production waste

Testing includes the following:

1. Tests for heavy metals, plasticizers, biocides, pesticides and Persistent Organic Pollutants (POPS)
2. A stringent emission test (according to ISO 16000) for carcinogens, Total Volatile Organic Compounds (TVOC), Semi Volatile Organic Compounds (SVOC), formaldehydes and other aldehydes
3. A sensory odour test

Street King Contract King Insert Specification

Contract King Insert Specification

Manufacturing Process

Fibre Bonded ISO 2424

Surface Aspect

Velour

Pile Yarn Composition

100% Polypropylene

Backing

High Grade Recycled Crumb Rubber ISO 2424

Pile Weight

2000g/m²

Backing Weight

900g/m²

Binder Compound

600g/m²

Total Weight

3500g/m²

Width

2.00m

Fire Rating

BS4790 Medium Radius Effects of Ignition



Street King Cleaning & Maintenance

Cleaning and Maintenance Guide

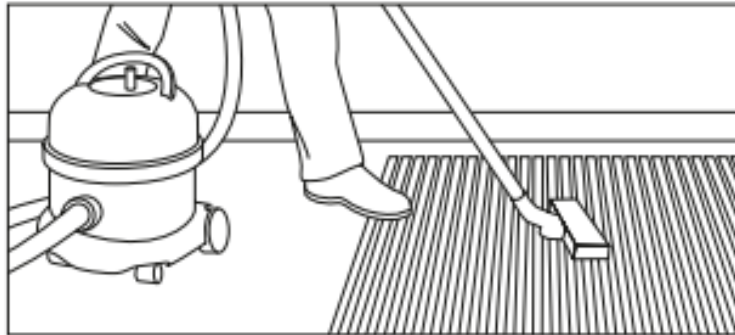
Street King entrance mats are designed to prevent the foot borne ingress of dirt and moisture into a building.

The aluminum ribs of the mat scrape dirt from shoe soles, whilst the studded design polypropylene offer brushing action/ resistance and absorb moisture. The inserts are quick drying thus making a more effective entrance matting system.

Daily Cleaning

Regular maintenance is vital to ensure that **Street King** remains effective.

Normal daily soiling can be dealt with using a suction vacuum cleaner. A 2000-Watt model will give better results than a lower powered model. The use of rubber bladed wet floor tool attachment should increase the effectiveness of the cleaning.



Periodic maintenance

Best results can be achieved by the periodic use of a spray extraction carpet cleaning machine.

The use of a mild detergent (neutral pH) cleaning solution in the carpet cleaning machine should loosen ingrained soiling and aid the removal of oils and grease. More stubborn stains should be treated a solvent-based spot remover prior to re-cleaning with the detergent solution.

Chewing Gum can be removed by freeze spraying or with a proprietary chewing gum remover and then scraped or combed out of the matting carpet pile. This should be done before the full cleaning process is started.

Street King mats have replaceable Polypropylene heavy duty fibre bonded carpet inserts (Contract King)

Depending on the regularity of maintenance and the volume of foot traffic, the strips may require replacement at infrequent intervals.

Replacement Polypropylene heavy duty fibre bonded carpet inserts (Contract King) may be obtained from **Jaymart Rubber & Plastics Ltd.**





Jaymart

**Jaymart Rubber & Plastics
Limited**

**Roman Way, Crusader
Park,**

Warminster

BA12 8SP

Tel 01985 218994

Email: sales@jaymart.co.uk

www.jaymart.co.uk