



GRASPOINTNER
Sustainable innovation.



As unique
as your
requirements.

Steel channels

Facade channels
Terrace channels
Terrace slot channels
OMEGA
SIGMA

Drainage systems

Intelligent Technology for any environment.



You expect performance,
and our mission is to deliver it.

Drainage poses special challenges, be it for facades, terraces or parking garages. These challenges concern drainage channels themselves, but also in large part how they fit into their environment. Our intelligent steel channel systems offer an optimal solution for any situation. How does that work? It works with intelligent products combined with expert advice and bold ambition.

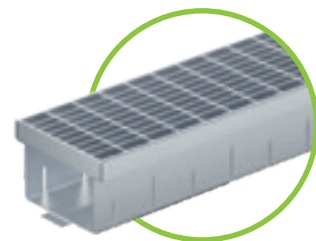


GRASPOINTNER
Sustainable innovation.

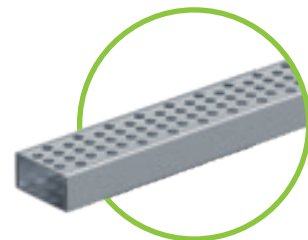


Perfect teamwork for optimal results.

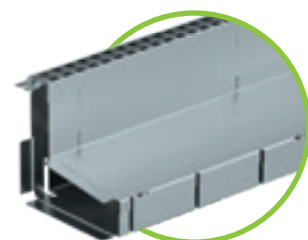
BG steel channels are made of high-quality steel and manufactured with extreme precision, to meet the most stringent requirements. A range of optimized accessories open up a spectrum of usage possibilities. And we have a team of highly qualified and experienced technicians who closely cooperate with architects and specialists to tailor-make complete packages to meet your requirements.



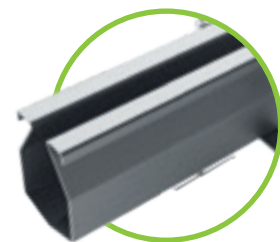
BG-FA facade channels
walkable | page 4-13



BG-TM terrace channels
walkable | page 14-15



BG-TE terrace slot channels
walkable | page 16-19



BG-OMEGA
up to class C | page 22-25



BG-SIGMA
up to class C | page 26-29

Maximum flexibility meets optimal performance.

BG-FA facade channel system

Our galvanised and stainless steel facade channels are exceptional for their flexibility. Ideal adaptation for the application area affords maximum building protection at all times.

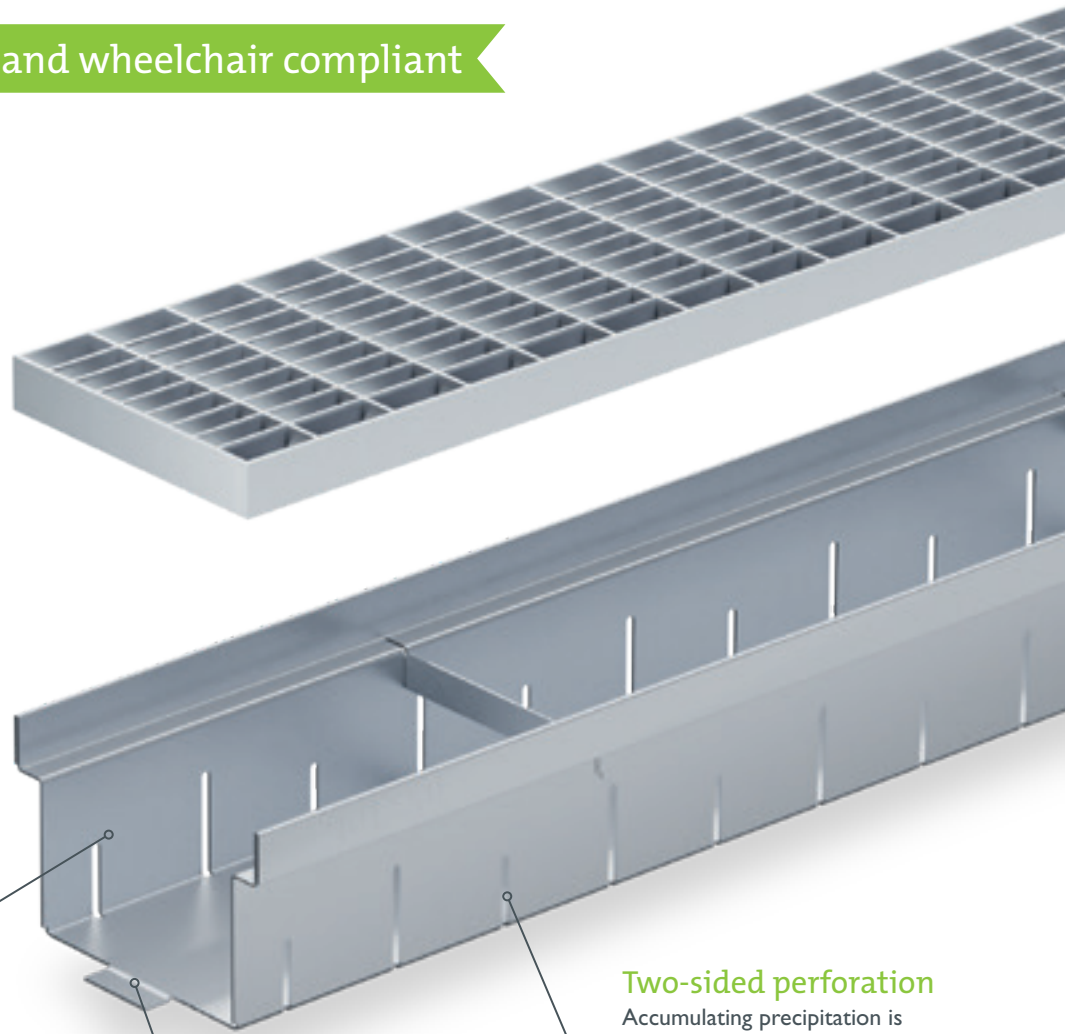
Extremely flexible usage.

BG-FA facade channels are available with fixed height. The BG-FA plus version with adjustable legs is allowing level adjustments on uneven surfaces.

Application areas

Ideal drainage for facades, building entrances, terraces, balconies, flat roofs, roof terraces and similar areas.

walkable and wheelchair compliant



Fixed element heights

Elements are available in different heights conforming to different standards, per channel width.

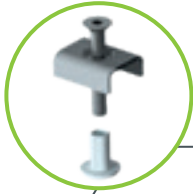
Two-sided perforation

Accumulating precipitation is discharged on the sealing level through the perforation.

Connection tabs

Tongue-and-groove connection tabs keep the individual segments securely connected.



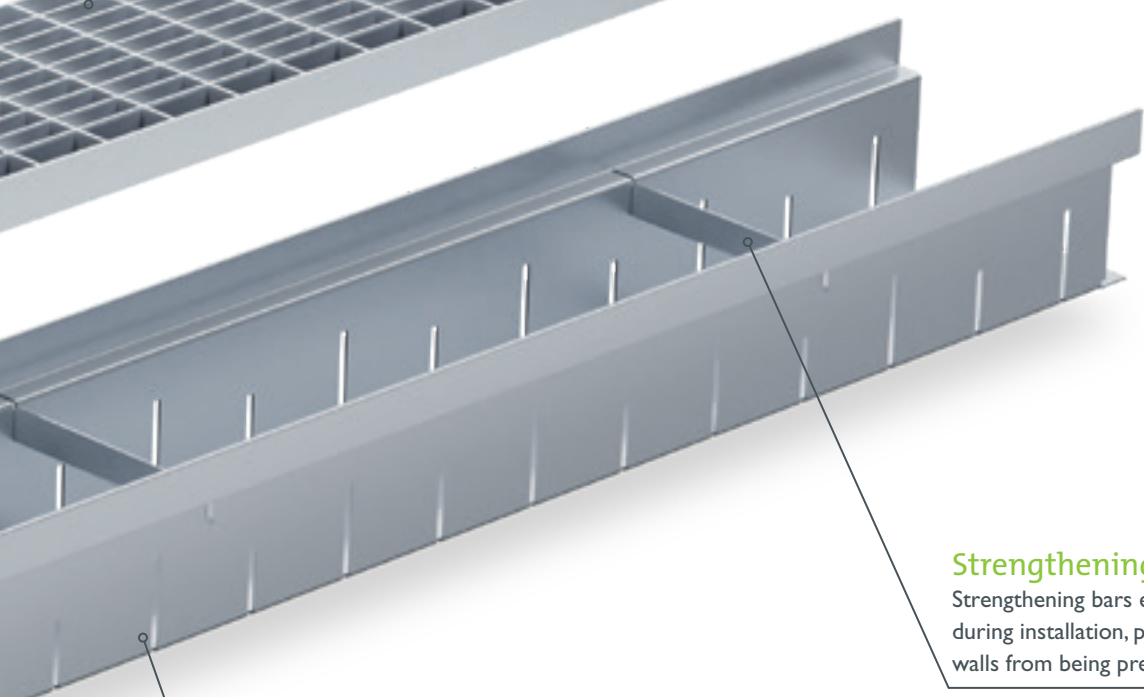
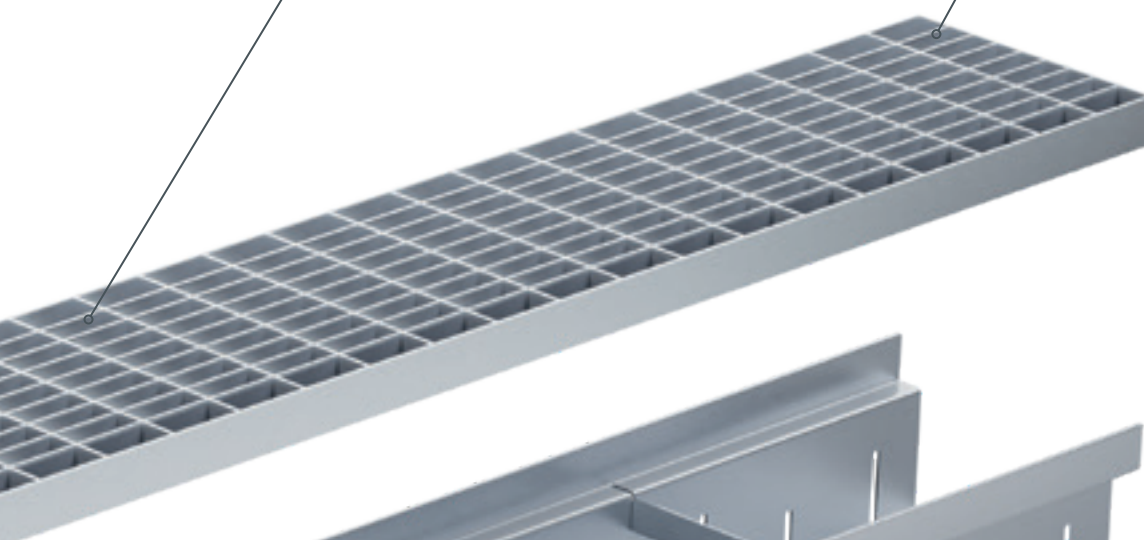


Bolting material

Gratings are available with a locking system.

Gratings

Choose from mesh, slotted, perforated and decorative grates, as well as longitudinal bar or cross bar gratings.



Strengthening bars

Strengthening bars ensure a stable form during installation, preventing the channel walls from being pressed together or apart.

Material

The channels are made of galvanised steel or stainless steel I.4301.

Benefits:

- Highly stable yet lightweight steel channel body
- Channel elements in widths 130 and 200
- Element lengths 500, 1000 and 2000 mm
- Minimal height, optimal drainage performance
- Height adjustable for great flexibility (BG-FA plus), with a range of accessories
- Ideal for flat roofs, terraces, balconies, and much more.



Adjustable height, constant performance.

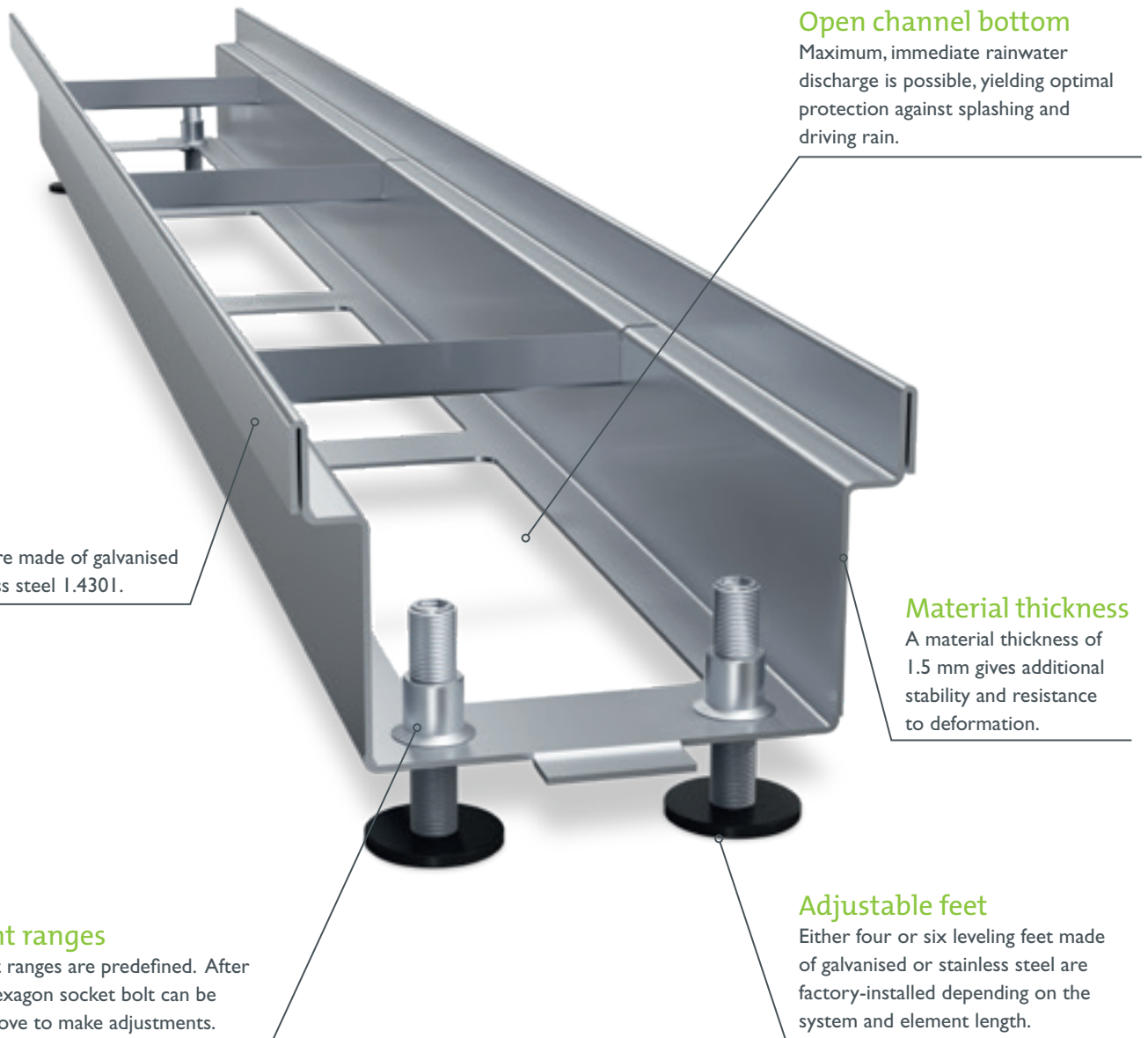
The BG-FA plus facade channel system.

Variability is the 'plus'.

BG-FA 'plus' facade channel elements can be adapted to any variation of height requirement, using adjustable feet. This has numerous application advantages.

Application areas

Individually height-adjustable, thus particularly suitable for compensating building construction tolerances, sloping substructures and terrace coverings laid on pedestals.



Open channel bottom

Maximum, immediate rainwater discharge is possible, yielding optimal protection against splashing and driving rain.

Material

The channels are made of galvanised steel or stainless steel 1.4301.

Material thickness

A material thickness of 1.5 mm gives additional stability and resistance to deformation.

Adjustment ranges

The adjustment ranges are predefined. After installation, a hexagon socket bolt can be turned from above to make adjustments.

Adjustable feet

Either four or six leveling feet made of galvanised or stainless steel are factory-installed depending on the system and element length.



Meeting all current requirements.

Standard conformity according to Austrian standard B 3691 – valid from 01.02.2019

All of our steel channels conform with the Austrian standard B 3691 as amended. Here you can find relevant information and installation instructions to ensure that your project meets the latest statutory requirements.

Three distinct usage situations:

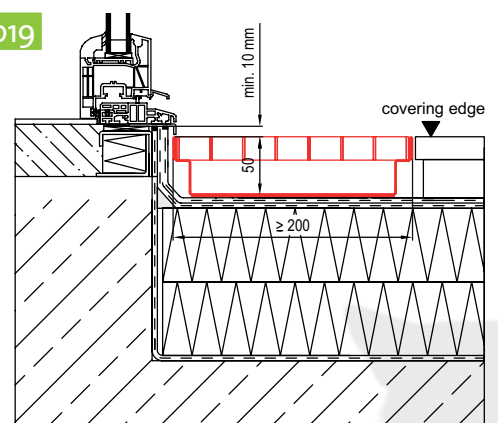
- **Exposed location:** Wall, door or window connection directly exposed to weathering effects of driving rain
- **Partially exposed location:** Wall, door or window connection partially protected from weathering effects of driving rain
- **Non-exposed location:** Wall, door or window connection protected from weathering effects of driving rain

Door and window element connections conformant with Austrian standard B 3691:

	min. width of drainage channel in mm	min. height of the drainage channel in mm	minimum height above covering	Recommended product
Partially exposed location	120	80	10	BG-FA RB 130, fixed height 80 BG-FA RB 130, variable height 80-120
	200	40	10	BG-FA RB 200, fixed height 50 BG-FA RB 200, variable height 50-70
Exposed location	120	180	10	BG-FA RB 130, fixed height 180
	200	90	10	BG-FA RB 200, fixed height 90 BG-FA RB 200, variable height 70-100

Further important requirements under Austrian standard B 3691:2019

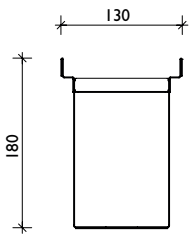
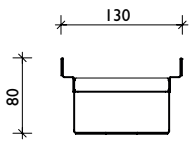
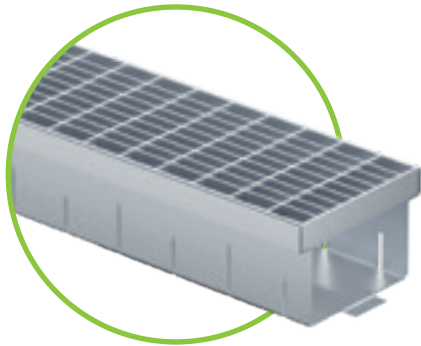
- The cross section of the hydraulic channel must be adapted for local conditions
- For roof drainage, branch channels are to be planned to lie beneath coverings in gravel bed or under bound coverings
- Double-sided perforated or closed side walls of the drainage channel
- For variable-height drainage channels, height adjustment should be possible when installed
- For facade channels installed in front of the soffit, the area between door element and channel must have a 5° slope. In such case, the channel must be extended at least 20 cm beyond the door reveal width on both sides.



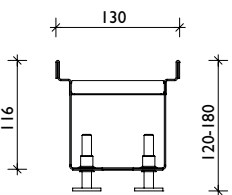
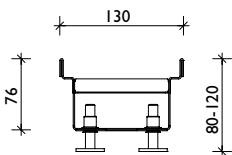


BG-FA facade channels

width 130 – walkable and wheelchair compliant



fixed height



variable height

i Further heights on request

Channel width 130 – both-sided perforation.

Item no. galvanised	Item no. stainl. steel	Channel type perforated material thickness 1 mm	Length mm	Height mm	Weight
21013200	21013300	RB 130, fixed height	500	80	1.3 kg
21013201	21013301	RB 130, fixed height	1000	80	2.6 kg
21013202	21013302	RB 130, fixed height	2000	80	5.0 kg
21013211	21013311	RB 130, fixed height	1000	180	4.1 kg
21013212	21013312	RB 130, fixed height	2000	180	8.1 kg

Facade channel "plus" width 130 – open bottom.

Item no. galvanised	Item no. stainl. steel	Channel type – open bottom material thickness 1.50 mm	Length mm	Height mm	Weight
21013231	21013331	RB 130, incl. 4 adjustable feet	1000	80 – 120	3.0 kg
21013232	21013332	RB 130, incl. 6 adjustable feet	2000	80 – 120	6.1 kg
21013233	21013333	RB 130, incl. 4 adjustable feet	1000	120 – 180	3.9 kg
21013234	21013334	RB 130, incl. 6 adjustable feet	2000	120 – 180	8.0 kg

Channel width 130 – unperforated.

Item no. galvanised	Item no. stainl. steel	Channel type unperforated material thickness 1 mm	Length mm	Height mm	Weight
21013251	21013351	RB 130, fixed height	1000	80	2.6 kg
21013252	21013352	RB 130, fixed height	2000	80	5.1 kg
21013261	21013361	RB 130, fixed height	1000	180	4.1 kg
21013262	21013362	RB 130, fixed height	2000	180	8.3 kg

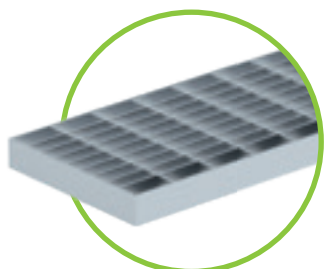
Accessories for channel width 130 – galvanised or stainless steel.

Item no. galvanised	Item no. stainl. steel	Accessories	Height	Weight
24913201	24913301	Outlet unit DN 75, width 130, length = 1000 mm	80	2.6 kg
24913202	24913302	Outlet unit DN 75, width 130, length = 1000 mm	180	4.3 kg
24913211	24913311	Corner piece 90°, width 130, fixed height	80	2.1 kg
24913221	24913321	Front cap, width 130, fixed height	80	0.1 kg
24913222	24913322	Front cap, width 130, fixed height	180	0.2 kg
24900010	24900011	Locking set for mesh gratings and longitudinal bar gratings, consisting of clip, bolt and sleeve nut (2 pieces per m)		0.1 kg

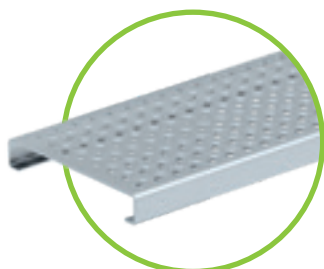
i Details to the accessories incl. additional pictures = see page 12

Gratings for channel width 130 – walkable and wheelchair compliant – width 122.

Item no. galvanised	Item no. stainl. steel	Gratings	Length/width/height in mm	Slot-/mesh width in mm	Pc./pallett	Weight/pc.	Inlet cross section
24513201	24513301	1. Mesh grating	1000/122/20	MW 30/10	120	2.5 kg	925 cm ² /m
24513202	24513302		500/122/20	MW 30/10	48	1.3 kg	925 cm ² /m
24513205	24513305	2. Perforated grating	1000/122/20	Ø 6 mm	120	1.6 kg	160 cm ² /m
24513206	24513306		500/122/20	Ø 6 mm	48	0.8 kg	160 cm ² /m
24513203	24513303	3. Slotted grating	1000/122/20	SW 9/85	120	1.5 kg	225 cm ² /m
24513204	24513304		500/122/20	SW 9/85	48	0.8 kg	225 cm ² /m
24513207	24513307	4. Longitudinal bar gr.	1000/122/20	bar distance 10 mm	120	3.9 kg	970 cm ² /m
24513208	24513308		500/122/20	bar distance 10 mm	48	2.0 kg	970 cm ² /m
24513209	24513309	5. Cross bar grating	1000/122/20	bar distance 10 mm	120	4.2 kg	940 cm ² /m
24513210	24513310		500/122/20	bar distance 10 mm	48	2.1 kg	940 cm ² /m
24513211	24513311	6. Design grating	1000/122/20		120	1.4 kg	
24513212	24513312		500/122/20		48	0.7 kg	



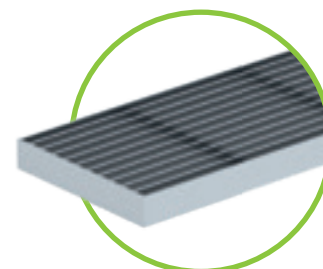
1. Mesh grating MW 30/10 galvanised or stainless steel



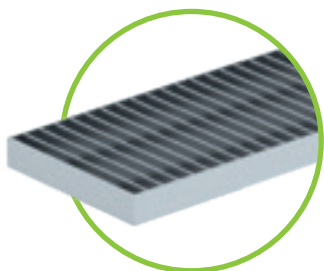
2. Perforated grating Ø 6 mm galvanised or stainless steel



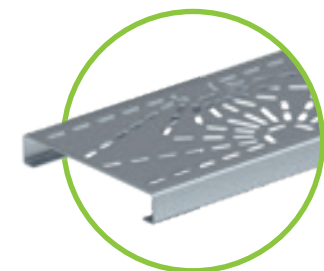
3. Slotted grating SW 9/85 galvanised or stainless steel



4. Longitudinal bar grating galvanised or stainless steel



5. Cross bar grating galvanised or stainless steel



6. Design grating „RAY“ on request

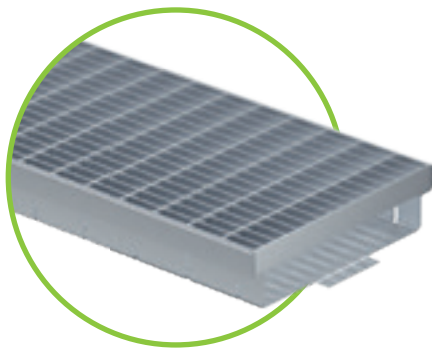


BG-FA facade channels incl. gratings are walkable and wheelchair compliant!



BG-FA facade channels

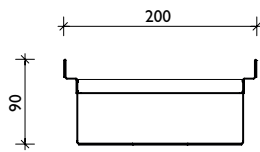
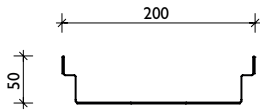
width 200 – walkable and wheelchair compliant



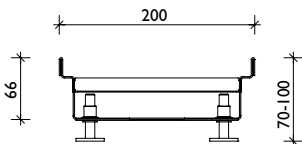
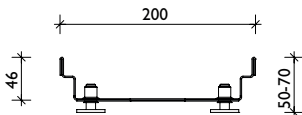
Channel width 200 – both-sided perforation.

Item no. galvanised	Item no. stainl. steel	Channel type perforated material thickness 1 mm	Length mm	Height mm	Weight
21020200	21020300	RB 200, fixed height	500	50	1.3 kg
21020201	21020301	RB 200, fixed height	1000	50	2.6 kg
21020202	21020302	RB 200, fixed height	2000	50	5.3 kg
21020211	21020311	RB 200, fixed height	1000	90	3.3 kg
21020212	21020312	RB 200, fixed height	2000	90	6.6 kg

Facade channel "plus" width 200 – open bottom.



fixed height



variable height

Item no. galvanised	Item no. stainl. steel	Channel type – open bottom material thickness 1.50 mm	Length mm	Height mm	Weight
21020221	21020321	RB 200, incl. 4 adjustable feet	1000	50 – 70	2.4 kg
21020222	21020322	RB 200, incl. 6 adjustable feet	2000	50 – 70	4.9 kg
21020223	21020323	RB 200, incl. 4 adjustable feet	1000	70 – 100	3.0 kg
21020224	21020324	RB 200, incl. 6 adjustable feet	2000	70 – 100	5.9 kg

Channel width 200 – unperforated.

Item no. galvanised	Item no. stainl. steel	Channel type unperforated material thickness 1 mm	Length mm	Height mm	Weight
21020231	21020331	RB 200, fixed height	1000	50	2.6 kg
21020232	21020332	RB 200, fixed height	2000	50	5.3 kg
21020241	21020341	RB 200, fixed height	1000	90	3.4 kg
21020242	21020342	RB 200, fixed height	2000	90	6.7 kg

Channel width 200 – barrier-free – perforated.

Item no. galvanised	Channel type barrier-free material thickness 1 mm	Length mm	Height mm	Weight
21020251	RB 200, different heights	1000	50 / 60	2.7 kg
21020252	RB 200, different heights	2000	50 / 60	5.3 kg

Accessories for channel width 200 – galvanised or stainless steel.

Item no. galvanised	Item no. stainl. steel	Accessories	Height	Weight
24920201	24920301	Outlet unit DN 75, width 200, length = 1000 mm	50	2.8 kg
24920202	24920302	Outlet unit DN 75, width 200, length = 1000 mm	90	3.5 kg
24920211	24920311	Corner piece 90°, width 200, fixed height	50	2.0 kg
24920212	24920312	Corner piece 90°, width 200, fixed height	90	2.6 kg
24920221	24920321	Front cap, width 200, fixed height	50	0.1 kg
24920222	24920322	Front cap, width 200, fixed height	90	0.1 kg
24900010	24900011	Locking set for mesh gratings and longitudinal bar gratings, consisting of clip, bolt and sleeve nut (2 pieces per m)		0.1 kg
24900012 ¹⁾	24900013 ¹⁾	Locking set for mesh gratings and longitudinal bar gratings, strengthening bar incl. sleeve nut, clip and bolt (2 pieces per m)		0.1 kg



Further heights on request



Details to the accessories incl. additional pictures = see page 12

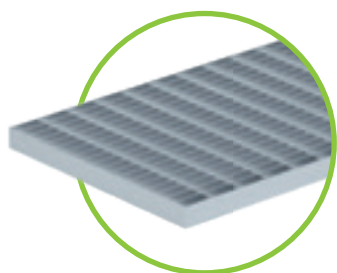
¹⁾ Locking clips only for fixed height 50 mm and variable height 50-70 mm – for all other heights: please use item-no. 24900010 / 24900011

Gratings for channel width 200 – walkable and wheelchair compliant – width 198.

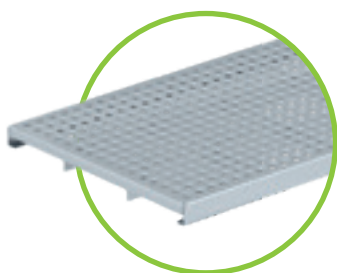
Item no. galvanised	Item no. stainl. steel	Gratings	Length/width/height in mm	Slot-/mesh width in mm	Pc./pallett	Weight/pc.	Inlet cross section
24520201	24520301	1. Mesh grating	1000/198/20	MW 30/10	60	3.8 kg	1615 cm ² /m
24520202	24520302		500/198/20	MW 30/10	30	2.0 kg	1615 cm ² /m
24520207	24520307	2. Perforated grating	1000/198/20	Ø 6 mm	60	3.5 kg	250 cm ² /m
24520208	24520308		500/198/20	Ø 6 mm	30	1.7 kg	250 cm ² /m
24520203	24520303	3. Longitudinal bar gr.	1000/198/20	bar distance 10 mm	60	6.4 kg	1575 cm ² /m
24520204	24520304		500/198/20	bar distance 10 mm	30	3.2 kg	1575 cm ² /m
24520205	24520305	4. Cross bar grating	1000/198/20	bar distance 10 mm	60	8.8 kg	1555 cm ² /m
24520206	24520306		500/198/20	bar distance 10 mm	30	4.4 kg	1555 cm ² /m



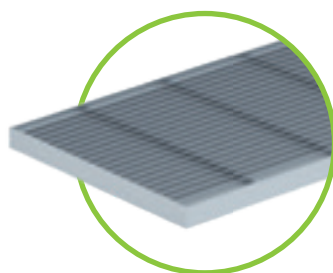
BG-FA facade channels incl. gratings are walkable and wheelchair compliant!



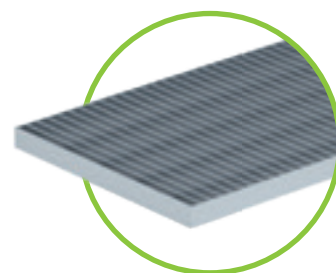
1. Mesh grating MW 30/10 galvanised or stainless steel



2. Perforated grating Ø 6 mm galvanised or stainless steel



3. Longitudinal bar grating galvanised or stainless steel



4. Cross bar grating galvanised or stainless steel

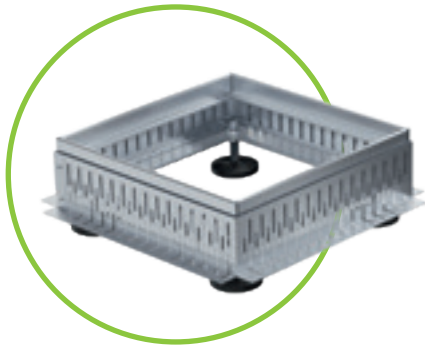
References





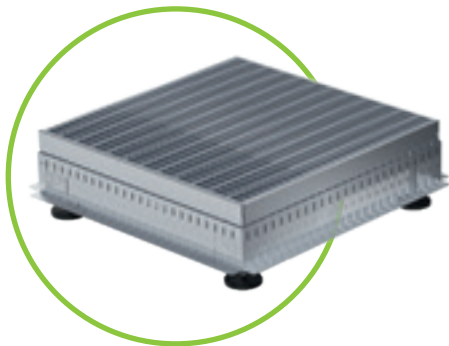
BG-FA facade channels

Gully tops, branch canals and accessories



Gully tops for all channel widths.

Item no. galvanised	Item no. stainl. steel	Gully tops	Height mm	Weight
24925200	24925300	Gully top 250/250, fixed height	50	1.9 kg
24925201	24925301	Gully top 250/250, variable height	70 – 100	2.6 kg
24925202	24925302	Gully top 250/250, variable height	100 – 160	2.9 kg
24940200	24940300	Gully top 400/400, fixed height	50	2.4 kg
24940201	24940301	Gully top 400/400, variable height	70 – 100	3.3 kg
24940202	24940302	Gully top 400/400, variable height	100 – 160	4.1 kg



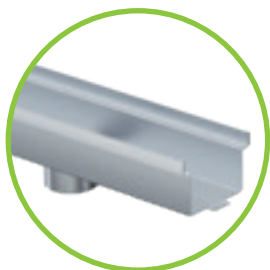
Gratings for gully tops.

Item no. galvanised	Item no. stainl. steel	Gratings	Length/width/height in mm	Slot-/mesh width in mm	Weight
24525200	24525300	Mesh grating	242/242/20	MW 30/10	1.0 kg
24540200	24540300	Mesh grating	392/392/20	MW 30/10	2.5 kg

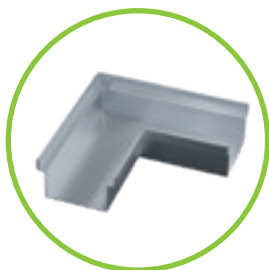


Branch canals for all channel width.

Item no. galvanised	Item no. stainl. steel	Branch canal	Length mm	Height mm	Weight
37851	37861	Branch canal, 1000/90/30	1000	30	1.1 kg
37852	37862	Branch canal, 2000/90/30	2000	30	2.2 kg



BG-FA outlet unit with bottom outlet DN 75



BG-FA corner pieces



BG-FA front caps



BG-FA locking set consisting of clip, bolt and sleeve nut (2 pieces per m)



BG-FA locking set consisting of strengthening bar incl. sleeve nut, clip and bolt (2 pieces per m)

i Position of outlet opening: channel end to outlet centre = 250 mm

References



Easy to install Elegant design

BG-TM terrace channel system

Functional aesthetics

The BG-TM terrace channel's narrow width of just 60 mm gives it an inconspicuous elegance that is ideal for terraces and garden areas. They can be laid simultaneously with the terrace plates. No special substructure is required.

Application areas

Ideal for laying on terraces in combination with tile coverings. Quick-and-easy installability makes this system an excellent choice for both contractors and DIY users.

Discreet look

The 60 mm channel width lends an inconspicuous elegance.

Channel cover

Made with a U-profile, the channel cover is simply inserted into the channel body. Its brushed surface has appealing-looking Ø 6 mm perforations. A protective film is provided against damage while construction is ongoing.

Element height

The element's low height of 30 mm is excellently suited for laying in a terrace surface covering.

Material

The channels are made of stainless steel 1.4301.
Material thicknesses:
Channel body: 0.75 mm
Cover: 1.5 mm

Front/connecting cap

A U-shaped piece can function as a transition plate to prevent shifting at the rebated joint, and also as a cap at the end of the channel line.

Channel body with outlet

Channel bodies with a DN 50 bottom outlet are also available.

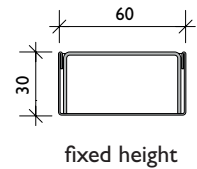
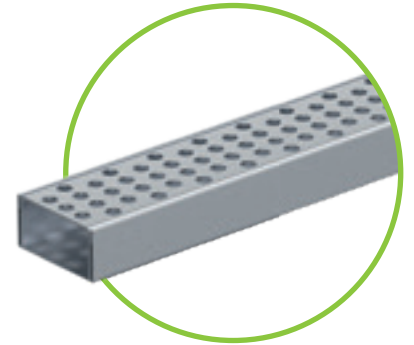


BG-TM terrace channels

width 60 – walkable and wheelchair compliant

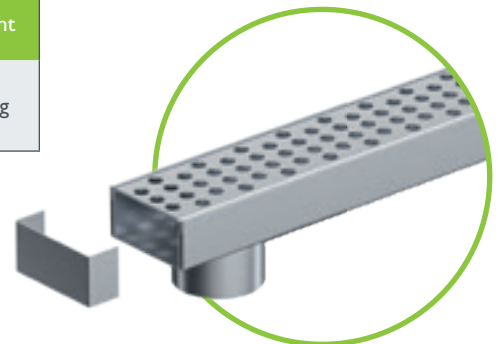
Channel width 60 – stainless steel 1.4301

Item no.	material thickness:	Length	Height	Weight
stainl. steel	channel 0.75 mm / grating 1.50 mm	mm	mm	
21106301	Channel width 60, fixed height incl. grating and front-/connecting cap	1000	30	1.9 kg



Outlet unit channel width 60 – stainless steel 1.4301

Item no.	material thickness:	Length	Height	Weight
stainl. steel	channel 0.75 mm / grating 1.50 mm	mm	mm	
21106302	Outlet unit, channel width 60, fixed height incl. grating and 2 front-/connecting cap, outlet DN 50	1000	30	2.0 kg



Outlet unit incl. front cap,
bottom outlet DN 50

Understated, yet remarkably efficient.

BG-TE Terrace slot channel system.

Sometimes you need to look twice to see true performance. Our terrace slot channels have a slot of only 18 mm - blending optimally into the overall architecture without compromising drainage capacity.

Terrace slot channels: Drainage on two levels.

Terrace slot channels are excellent for terraces, roof terraces and garden drainage. They offer a big advantage by allowing drainage on two levels: the flooring and the underlying floor plates.

walkable and wheelchair compliant

Slot width 18 mm

A narrow slot width of only 18 mm renders these drainage elements barely visible.

Front tabs

Perfectly interlocking front tabs ensure a secure connection between individual segments.

Two-sided perforation

Drainage possible on two water bearing levels.



GRASPOINTNER
Sustainable innovation.

Slot inlay

A grate cover keeps out solid materials, ensuring clean and proper flow through the channel line. The cover can be easily removed to clean the channel body.

Construction time barrier

The construction time barrier should remain in the terrace slot channels during the entire construction period to avoid deforming and keep the system clean.



Height adjustment

BG-TE terrace slot channels are height-adjustable, allowing a perfect fit in case of slope differences between floor covering and floor plate.

Material

The channels are made of stainless steel 1.4301.

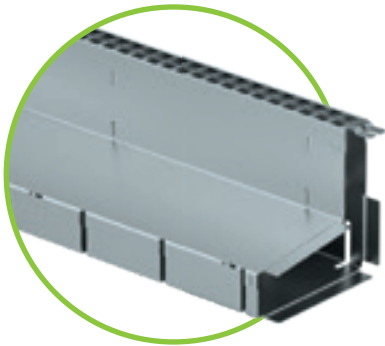
Benefits:

- Highly stable yet lightweight stainless steel channel body
- High drainage performance with 18 mm slot width
- Blends in well with the overall architectural aesthetics thanks to great flexibility and an extremely slim design
- Many versions and a range of accessories
- Easy-to-clean channel body with removable cover and maintenance units



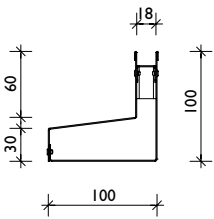
BG-TE terrace slot channels

Slot width 18 – walkable and wheelchair compliant



Channel body with slot width 18 – perforated.

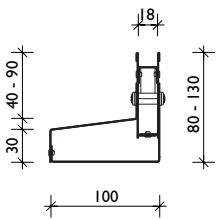
Item no. stainl. steel	Channel type perforated material thickness 1.00 mm	Length mm	Height mm	Weight
38020	SW 18, perforated	1000	100	3.2 kg
38030	SW 18, perforated	1000	80 – 130	3.0 kg



fixed height

Channel body with slot width 18 – unperforated.

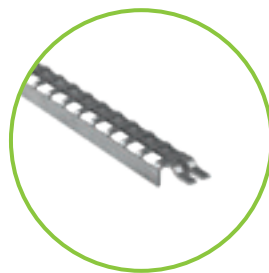
Item no. stainl. steel	Channel type unperforated material thickness 1.00 mm	Length mm	Height mm	Weight
38000	SW 18, unperforated	1000	100	3.2 kg
38010	SW 18, unperforated	1000	80 – 130	3.0 kg



variable height

Gratings for BG-TE terrace slot channels - slot width 18.

Item no. stainl. steel	Gratings	Weight
37955	BG-TE slot inlay with square perforation 8/8 mm, L = 500 mm	0.1 kg
37956	BG-TE slot inlay with square perforation 8/8 mm, L = 1000 mm	0.2 kg
37961 – wood	BG-TE construction time barrier, slot width 18, L = 1000 mm	0.1 kg



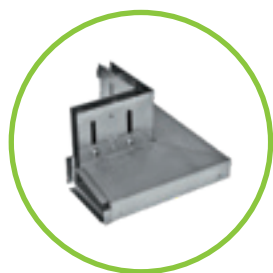
BG-TE slot inlay with square perforation 8/8 mm



BG-TE construction time barrier made of wood, L = 1000 mm

Accessories for BG-TE terrace slot channels - slot width 18 – stainless steel.

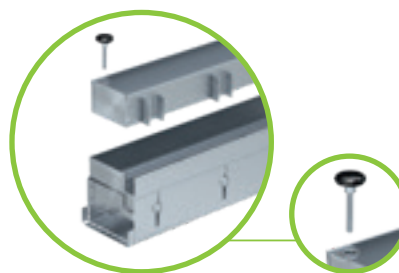
Item no. stainl. steel	Accessories	Height mm	Weight
13399	BG-TE opening tool for maintenance unit-cover – 2 pcs. required		0.1 kg
38040	BG-TE maintenance unit 500/100 with outlet at bottom or side	80 – 130	3.0 kg
38050	BG-TE external corner 200/200 – unperforated	80 – 130	1.2 kg
38055	BG-TE internal corner 200/200 – unperforated	80 – 130	1.4 kg
38060	BG-TE front cap left/right, width 100 mm	80 – 130	0.1 kg



BG-TE external corner
200/200 – unperforated



BG-TE internal corner
200/200 – unperforated



BG-TE maintenance unit
500/100 with outlet:
bottom DN 75 / at the side DN 50



BG-TE front cap left/right,
width 100 mm

References



As unique as your requirements.

Our special solutions.

We know that some challenges cannot be solved with standard channel elements. Our technicians can design any solution for your specific requirements. With our know-how, we will produce what you need, and provide support on site.

Send us your project!

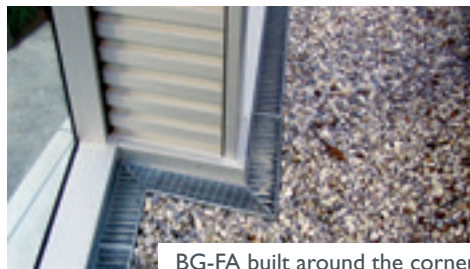
Our technical support will be happy to provide you with a quote for your project.



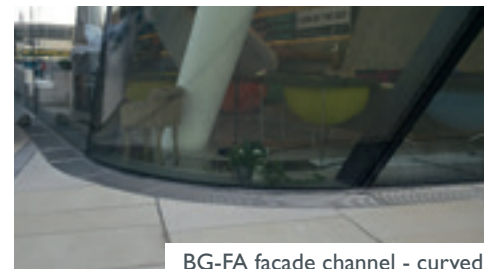
BG-FA facade channel - built-in radial



Slot tops near fountains



BG-FA built around the corner



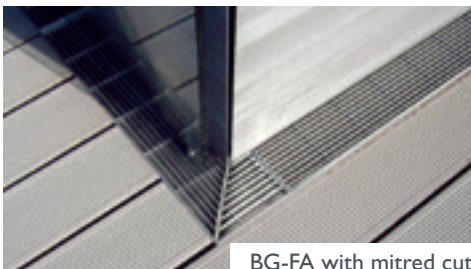
BG-FA facade channel - curved



References



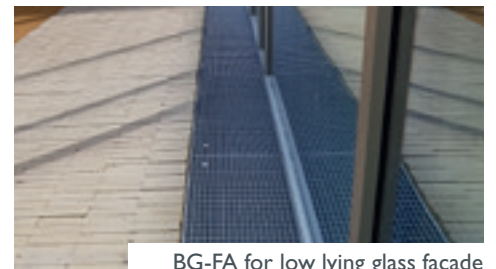
BG-FA with anti-slip mesh gratings



BG-FA with mitred cut



BG-FA with design grating "sunrays"



BG-FA for low lying glass facade



Understated, yet remarkably efficient & resilient:

BG-OMEGA indoor slot channel system

The ability to withstand heavy loads without a cover and, at the same time, ensure reliable and long-lasting drainage performance, makes the BG-OMEGA slotted channel a simple, economical solution for your indoor drainage.

Thanks to the “V”-shaped channel bottom, liquids can be drained off safely and efficiently. An odour trap is integrated in the outlet elements as standard.

Areas of application.

Food industry, industrial kitchens, slaughterhouses, wineries, breweries, etc.

up to class C 250

Visible edge with shimming

- shimming made from PVC, bonded into the edge profile
- for cavity-free, high load capacity grouting in the concrete/in the coating

Liquid-tight joints

- bolted flange
- seal made from EPDM (alternatively made from Teflon® or silicone)
- complete with stainless steel M8 bolting

Corner piece

- corner piece with a leg length of 500 mm
- cost-effective and efficient corner solution
- best trafficability
- stable and durable

Outlet elements incl. odour trap

- outlet element with vertical or horizontal outlet
- various dimensions and heights for higher drainage capacity
- removable sediment bucket
- solid cover up to B 125 kN, class C 250 kN upon request



Channel body made from stainless steel

- optimized OMEGA shape for high runoff performance, easy cleaning and high stability (inbuilt slot bridge)
- 1.4301 stainless steel or higher quality upon request
- material thickness 2 mm
- slot width 16 mm, no cover required

Connecting elements

- for corners, cross or T connections
- also available with outlets

Channel with outlet

- vertical/horizontal outlet directly from the channel element
- freely chosen position in the channel run

Anchor plate

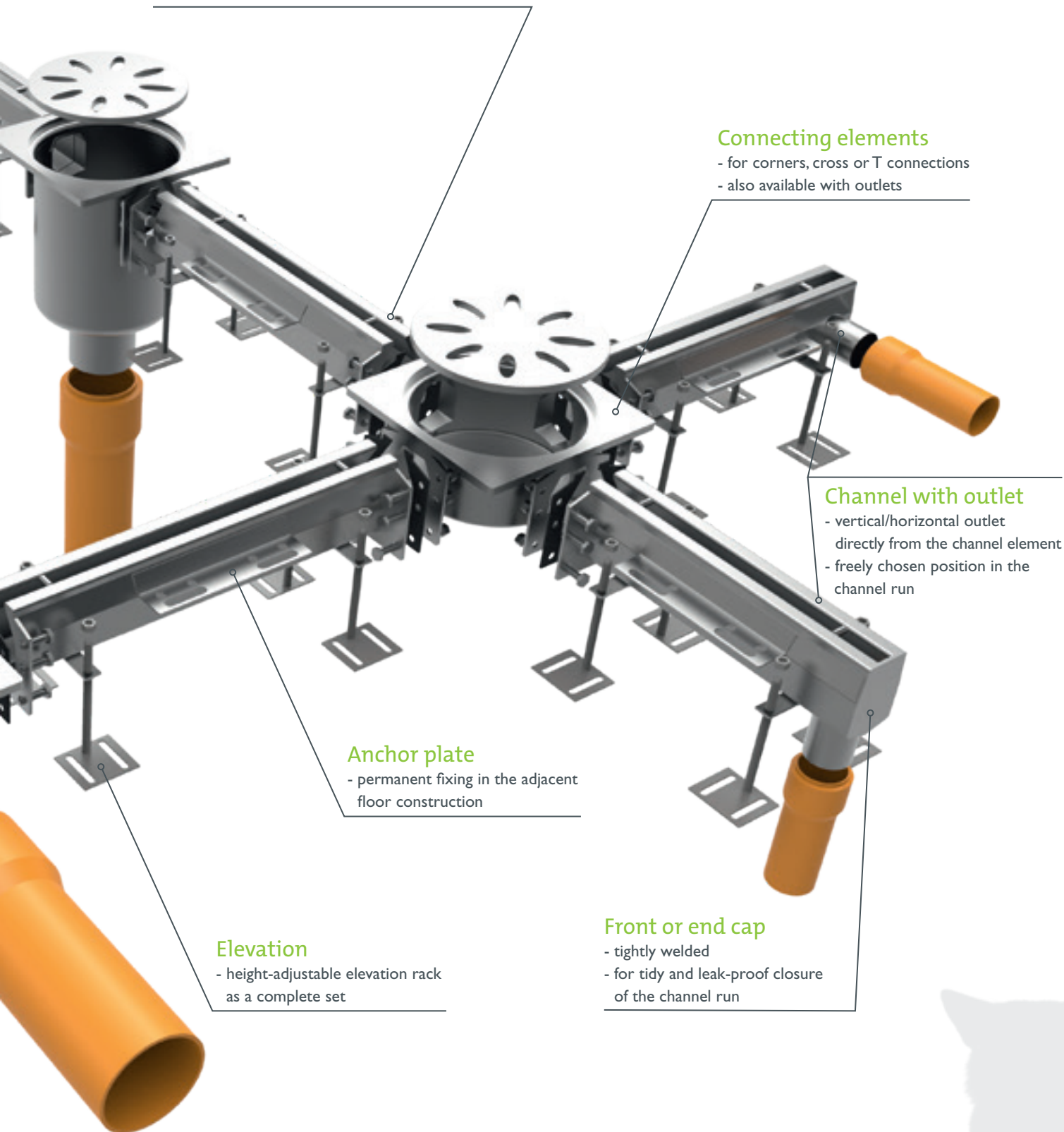
- permanent fixing in the adjacent floor construction

Elevation

- height-adjustable elevation rack as a complete set

Front or end cap

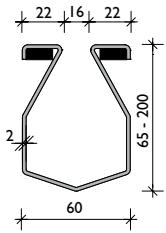
- tightly welded
- for tidy and leak-proof closure of the channel run





BG-OMEGA

Slot width 16 – up to class C 250



BG-OMEGA slotted channels SW 16 - STAINLESS STEEL 1.4301

Channel elements with or without slope, with sealing flange for bolting

BG-OMEGA without slope - material thickness: 2.0 mm	Length mm	Height mm	Weight
BG-OMEGA - SW 16, without slope, various heights - flange at both ends	to max. 3000	65 - 200	4.4 - 25.5 kg
BG-OMEGA with 0.5% slope - material thickness: 2.0 mm	Length mm	Height mm	Weight
BG-OMEGA - SW 16, with 0.5 % slope, various heights - flange at both ends	to max. 3000	65 - 200	4.5 - 24.6 kg



Flange connection with seal

BG-OMEGA outlet elements incl. odour trap

for BG-OMEGA slotted channels, with sediment bucket, in various sizes and heights, always for vertical or horizontal connection

BG-OMEGA outlet-elements incl. odour trap and sediment bucket	Material	Height mm	Weight
BG-OMEGA outlet element 247 x 247 with sediment bucket, with DN 100 outlet, for vertical connection	stainless steel	260	8.3 kg
BG-OMEGA outlet element 247 x 247 with sediment bucket, with DN 100 outlet, for horizontal connection	stainless steel	260	8.3 kg



Other outlet elements for higher hydraulic capacity upon request.



BG-OMEGA outlet elements incl. odour trap and sediment bucket, horizontal outlet



BG-OMEGA outlet elements incl. odour trap and sediment bucket, vertical outlet



Please note that these products are manufactured to order – no in-stock products!

Accessories

for BG-OMEGA slotted channels, SW 16

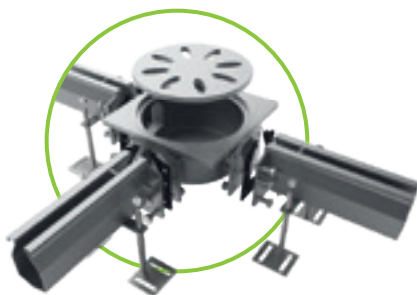
Accessories	Material	Height mm	Weight
BG-OMEGA corner 90°, leg length 500 mm	stainless steel	65 - 200	4.4 - 9.0 kg
BG-OMEGA corner connector 90°	stainless steel	65 - 200	5.7 - 7.3 kg
BG-OMEGA T connector	stainless steel	65 - 200	6.1 - 7.8 kg
BG-OMEGA cross connector	stainless steel	65 - 200	6.5 - 8.3 kg
BG-OMEGA front or end cap	stainless steel	65 - 200	0.3 - 2.7 kg
BG-OMEGA end cap with outlet DN 50	stainless steel	65 - 200	0.4 - 2.8 kg



BG-OMEGA corner with leg length 500 mm



BG-OMEGA corner connector



BG-OMEGA T connector



BG-OMEGA cross connector

Send us your project!

Our technical support service will be happy to provide you with a quote for your project:
sales.int@bg-graspointner.com

References



Square-shaped and **well-sealed.**

BG-SIGMA grid unit system

The BG-SIGMA drainage channels are made from 1.4301 or higher quality stainless steel and are used to conduct water from the floor area into a waste water collecting system. The specially developed flange connector ensures absolutely leak-proof laying of the channel run.

This high-quality and individual drainage system can be adapted to suit your needs. Practically any height, width and load capacity are possible. Stainless steel mesh gratings up to class C 250 are available as covers.

Areas of application:

Car parks, parking areas, food processing sites, chemical plants, breweries, dairies, supermarkets, catering, hospitals, etc.

up to class C 250

Liquid-tight joints

- bolted flange
- seal made from NBR
- complete with stainless steel M6 bolting

Perforated, continuous flange plate

- durable connection of the floor coating to the drainage channels

Elevation

- height-adjustable elevation rack as a complete set



Grating

- 1.4301 stainless steel mesh grating
- Mesh width 30/10 or 30/30 mm
- load class B 125 or C 250
- optional bolting upon demand

Sump pit frame

- as a connecting element
- also for T, corner and cross connections
- as stacking frame for a catch basin/sump pit constructed on site

Front/end cap

- tightly welded (incl. perforated flange plate)
- tight closure of channel run

Channel body

- made from 1.4301 or higher quality stainless steel
- nominal width: 150 mm
- visible width: 208 mm
- element length: 4000 mm (adjustable to the line length)
- material thickness: 1.5 mm

Anchor bar

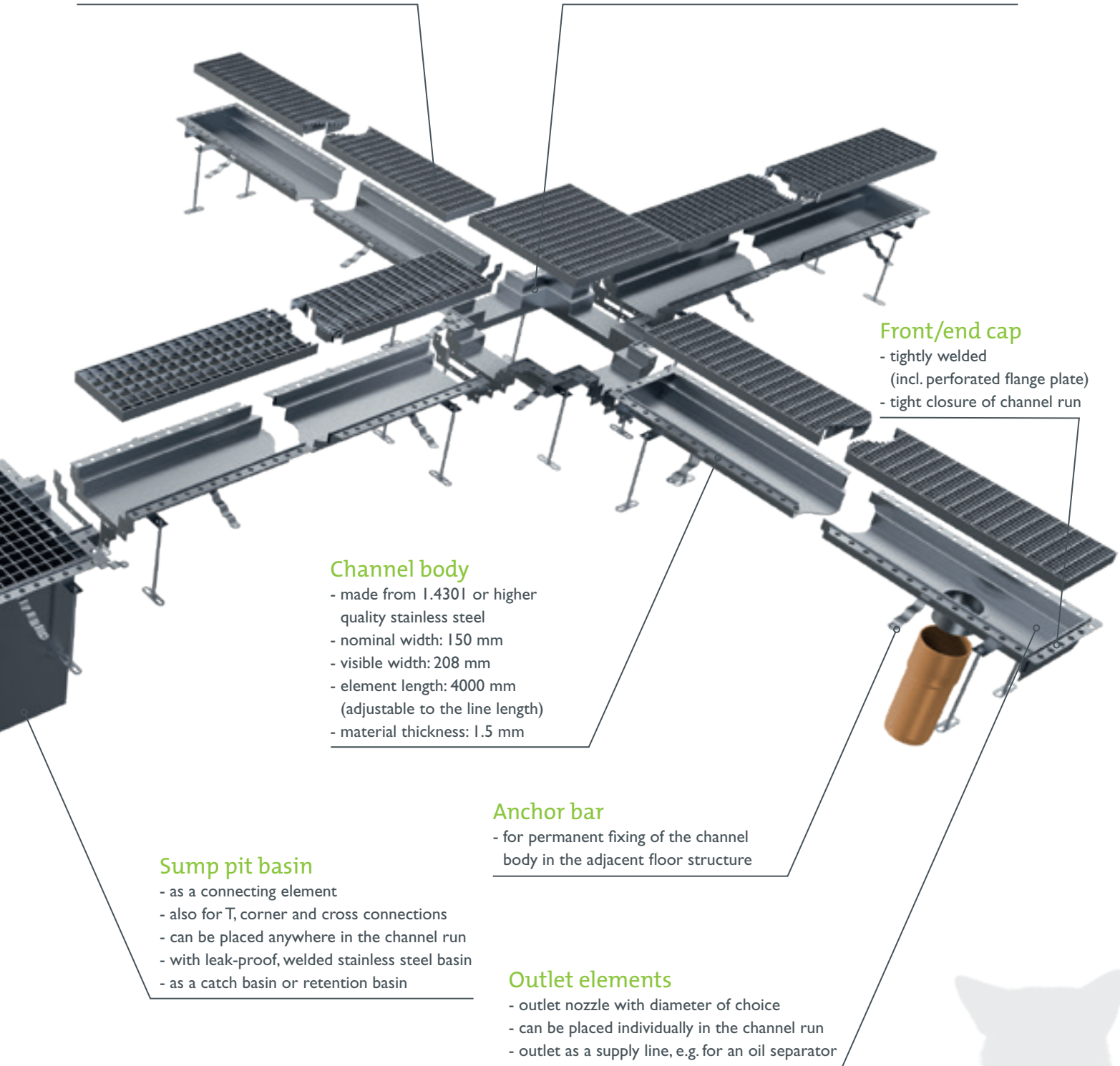
- for permanent fixing of the channel body in the adjacent floor structure

Sump pit basin

- as a connecting element
- also for T, corner and cross connections
- can be placed anywhere in the channel run
- with leak-proof, welded stainless steel basin
- as a catch basin or retention basin

Outlet elements

- outlet nozzle with diameter of choice
- can be placed individually in the channel run
- outlet as a supply line, e.g. for an oil separator





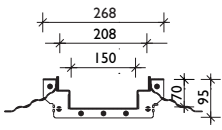
BG-SIGMA

Nominal width 150 – up to class C 250

BG-SIGMA grid unit, nominal width 150 - STAINLESS STEEL 1.4301

Channel body without slope, with welded on sealing flange, standard length 4000 mm

BG-SIGMA without slope - material thickness: 1.5 mm	Length mm	Height mm	Weight
BG-SIGMA grid unit with flange, nominal width 150, without slope, standard length: 4000 mm / visible width: 208 mm / nominal width: 150 mm internal height: 70 mm / incl. mesh grating stainless steel 1.4301	4000	95	29 kg

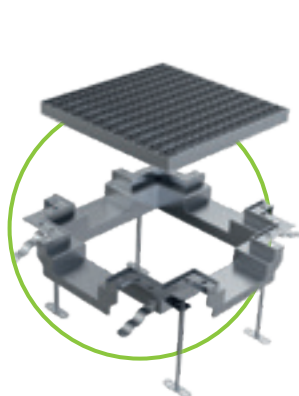


Flange connection with NBR seal bolted

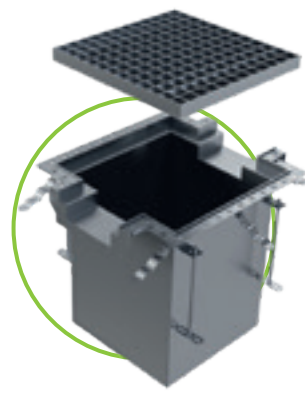
BG-SIGMA outlet elements

Sump pit frame or sump pit basin, can be placed anywhere in the channel run, as a connecting, end, T or cross piece

Sump pit frame	Material	Height mm	Weight
BG-SIGMA sump pit frame - end piece	stainless steel	100	5.3 kg
BG-SIGMA sump pit frame - corner or connecting piece	stainless steel	100	5.5 kg
BG-SIGMA sump pit frame - T-element	stainless steel	100	5.7 kg
BG-SIGMA sump pit frame - cross element	stainless steel	100	5.8 kg
Sump pit basin	Material	Height mm	Weight
BG-SIGMA sump pit basin - end piece	stainless steel	482	13.3 kg
BG-SIGMA sump pit basin - corner or connecting piece	stainless steel	482	13.4 kg
BG-SIGMA sump pit basin - T-element	stainless steel	482	13.6 kg
BG-SIGMA sump pit basin - cross element	stainless steel	482	13.8 kg
Gratings for sump pits	Load class	Height mm	Weight
Mesh grating 397/397/30, MW 30/10	B 125 kN	30	7.0 kg
Mesh grating 397/397/30, MW 30/30	B 125 kN	30	5.0 kg
Mesh grating 397/397/30, MW 30/10	C 250 kN	30	7.8 kg
Mesh grating 397/397/30, MW 30/30	C 250 kN	30	6.0 kg



BG-SIGMA sump pit frame



BG-SIGMA sump pit basin



Please note that these products are manufactured to order – no in-stock products!

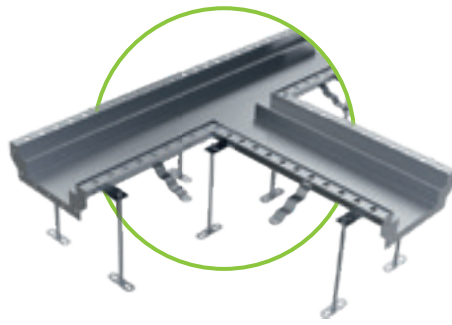
Gratings and accessories

for BG-SIGMA grid unit, nominal width 150

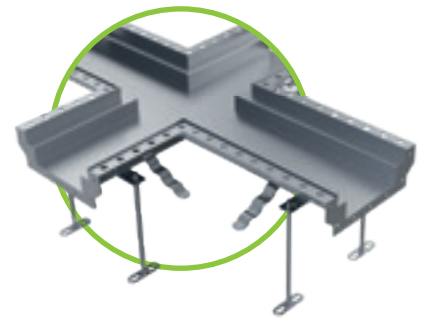
Gratings without bolt connection	Load class	Height mm	Weight
Mesh grating 1000/197/30, MW 30/10	B 125 kN	30	8.0 kg
Mesh grating 1000/197/30, MW 30/30	B 125 kN	30	6.0 kg
Mesh grating 1000/197/30, MW 30/10	C 250 kN	30	10.0 kg
Mesh grating 1000/197/30, MW 30/30	C 250 kN	30	8.0 kg
Accessories	Material	Height mm	Weight
BG-SIGMA corner piece 90°, leg length 700 x 700 mm	stainless steel	95	8.9 kg
BG-SIGMA T piece, leg length 1000 x 700 mm	stainless steel	95	11.6 kg
BG-SIGMA cross piece, leg length 1000 x 700 mm	stainless steel	95	11.2 kg
Additional charge for tightly welded drain nozzles DN 100, bottom			
Additional charge for bolted gratings per running meter / grate incl. sump pit			



BG-SIGMA corner piece 90°,
leg length 700 x 700 mm



BG-SIGMA T piece,
leg length 1000 x 700 mm



BG-SIGMA cross piece,
leg length 1000 x 700 mm

Send us your project!

Our technical support service will be happy to provide you with a quote for your project:
sales.int@bg-graspointner.com

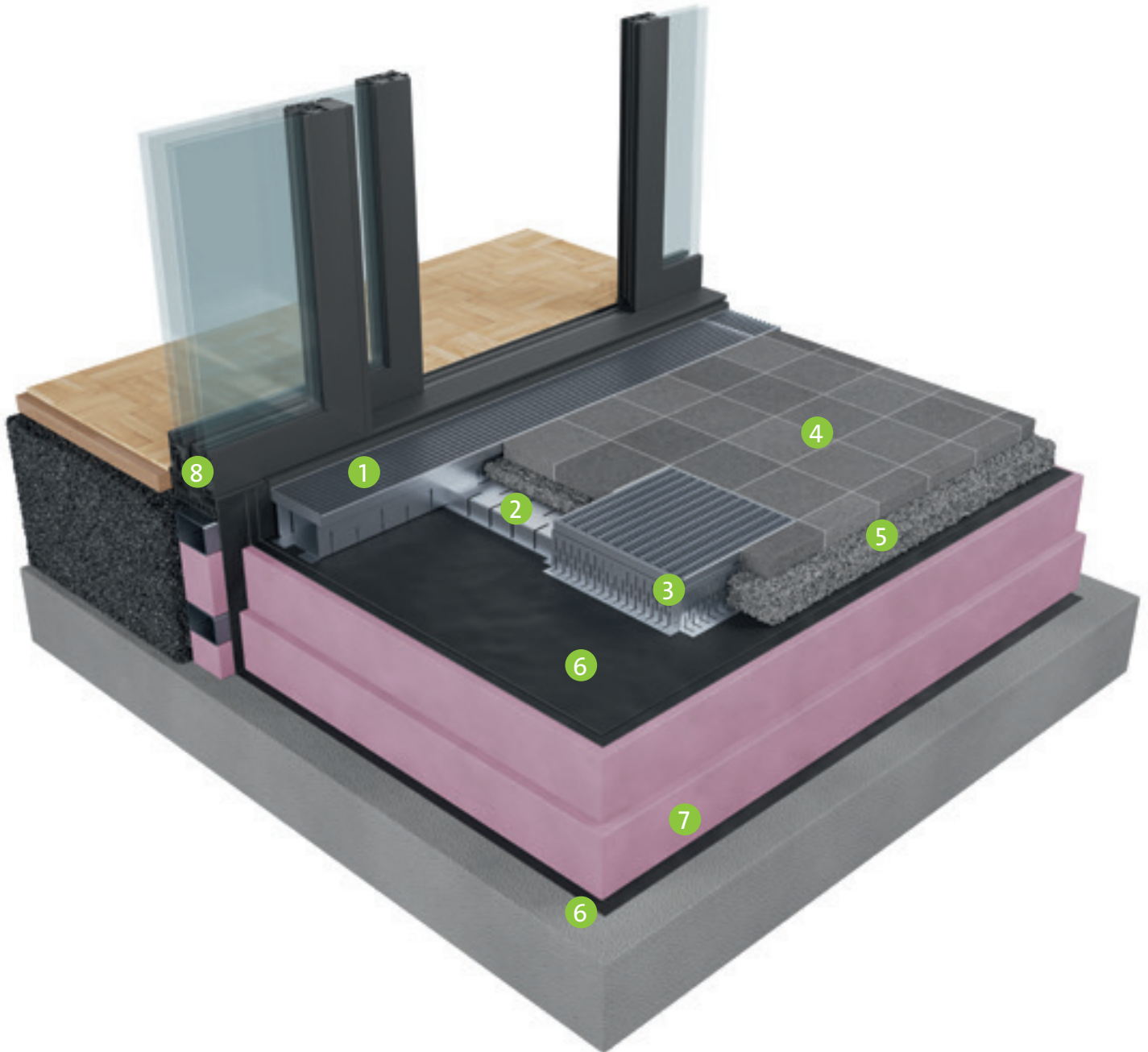
References





BG Installation examples

BG-FA facade channels

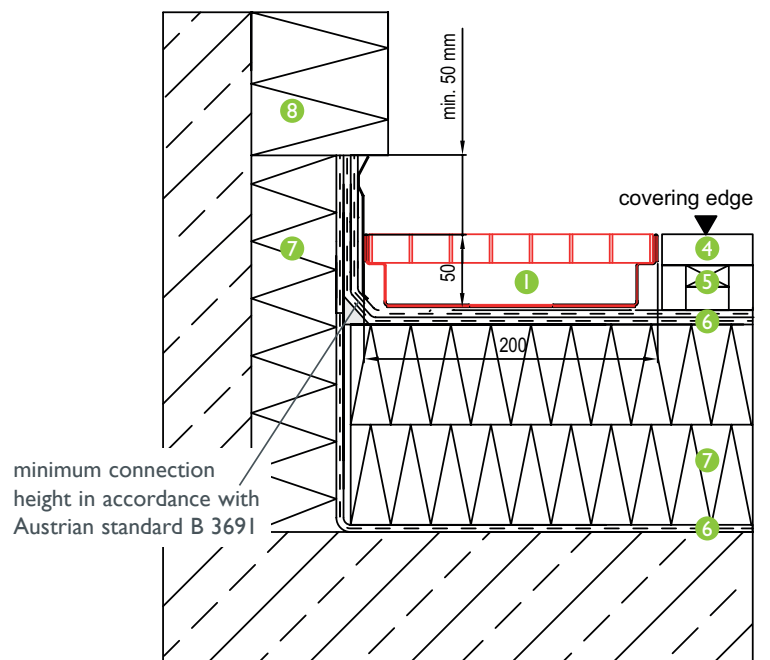
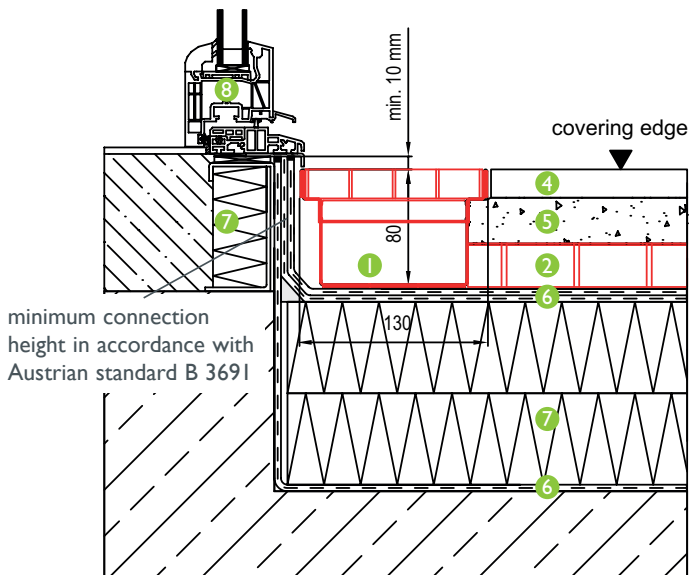
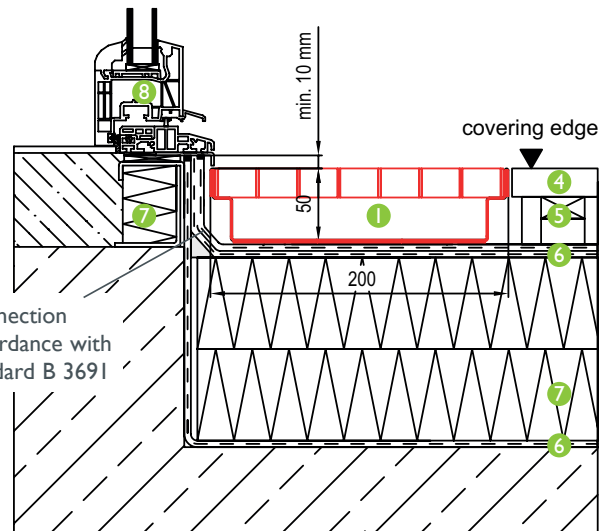


- 1 BG-FA facade channel fixed height 130 or 200
- 2 Branch canal to outlet
- 3 Gully top element with mesh grating

- 4 Flooring/floor structure such as terrace plates/planks, etc.
- 5 Construction according to planer such as gravel bed or drainage concrete
- 6 Sealing film
- 7 Thermal insulation
- 8 Door or facade construction

Installation in areas without ground contact

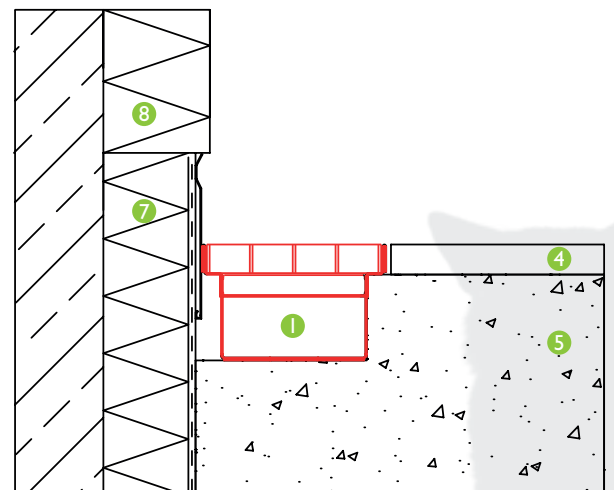
For installation of a BG-FA facade channel, the connection height in the door area can be reduced from 10 cm to 1 cm. The sealing heights specified in the standard Austrian standard B 3691 must be adhered to during installation. The BG-FA facade channel with branch canal can even be used at low installation heights, and is recommended in case of a larger distance to the next roof outlet (top attachment element).



Installation in areas with ground contact

Laid in a gravel bed or single-grained concrete, BG-FA facade channels with two-sided perforation conduct accumulating rainwater into the ground below to seep off.

BG-FA facade channels with a closed channel body are suitable for controlled rainwater drainage, and can be connected to the surface drainage system.





BG Installation examples

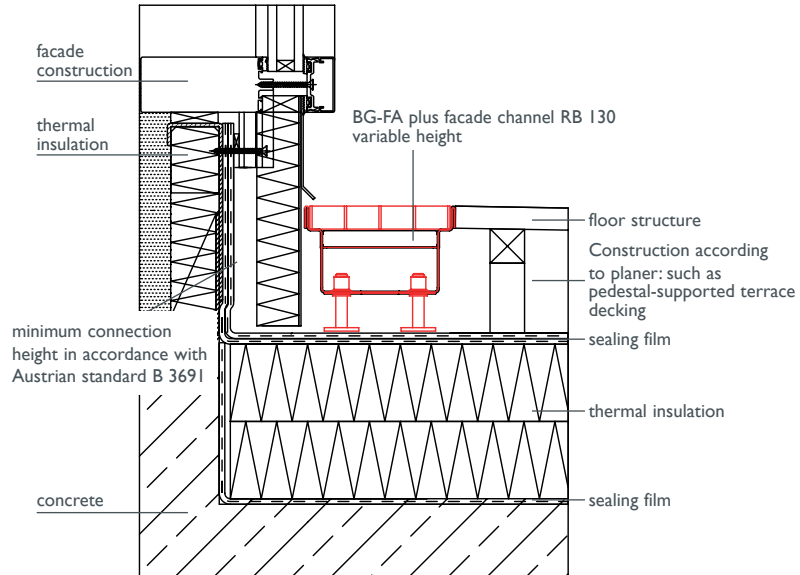
BG-FA plus facade channels & terrace channel systems

BG-FA plus facade channels

BG-FA plus facade channels afford steplessly adjustable installation.

This open bottomed channel is factory-made with adjustable feet and hexagon socket allowing adjustment from above even after installation. Height flexibility allows precise adjustment for gradient differences and building construction tolerances.

BG-FA plus facade channels are also excellently suited for installation with pedestal-supported terrace coverings.

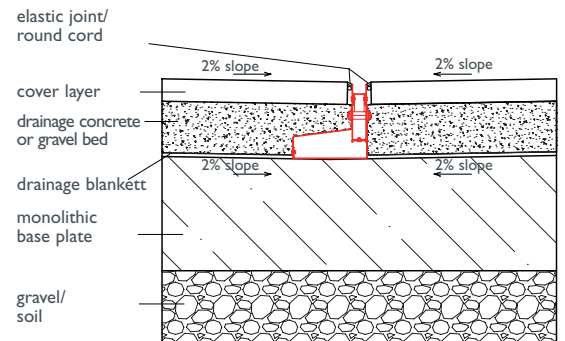


BG-TE terrace slot channels:

BG-TE terrace slot channels are primarily used for terrace and garden drainage. These channels offer a big advantage by allowing drainage on two levels: the floor covering and the underlying floor plates.

Surface water is discharged through the narrow slot and with slot inlay. Penetrating seepage water is captured in the slotted channel body.

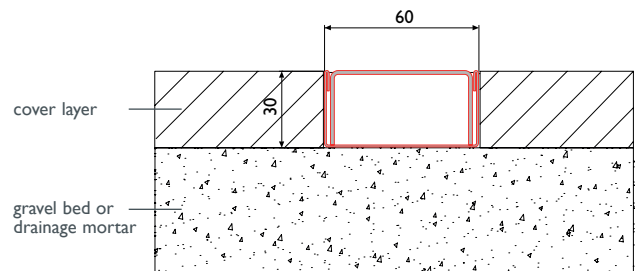
Height variability allows precise adjustment for level and gradient differences between floor covering and floor plates.



BG-TM terrace channels

BG-TM terrace channels are used for terrace drainage in combination with paving plates. Because of their low 30 mm height they can be placed anywhere between paving plates on the gravel without any special substructure being required.

Accumulating surface water is reliably and rapidly drained through the perforated cover grate.



BG installation examples

BG-OMEGA and BG-SIGMA

A) BG-OMEGA installation guidelines

B) BG-SIGMA installation guidelines

1) A+B The BG installation and maintenance guidelines and installation examples below are intended for standard applications. The load class and installation location in accordance with EN1433 should be adapted during planning to suit the local conditions. The technical policies and guidelines generally recognized among experts should be taken into consideration. In special cases, please contact BG Application Engineering.

2.1) A+B A recess in accordance with the installation examples must be provided in order to be able to create epoxy resin grouting, or the channel will be concreted with the floor panel.

2.2) A+B The channel elements should be laid according to the laying plan/installation instructions in the designated location and rotated correctly to be able to establish a sealed flange connection – attention should be paid to the equal size/height of the flange.

2.3) A First, the pipe nozzles/outlet piece has to be connected to the sewer and levelled in height with the lower nut of the supports (do not tighten the second nut yet) – channel edge approx. 1 – 1.5 mm below the level of the finished floor.

2.3) B First, the pipe nozzles/outlet piece has to be connected to the sewer and levelled in height with the lower nut of the supports (do not tighten the second nut yet) – the channel edge provides the level of the finished floor. If a sump pit frame or a sump pit basin is used (instead of connection to the sewer), place this over the sump pit first and level accordingly.

2.4) A+B Clean the flanges of the channel elements thoroughly (dirt must be removed) and bolt together including seal – the bolting material is included in the scope of delivery as standard.

2.5) A+B When bolting the flanges, take care to ensure the exact orientation of the channel run (plumb line, scale beam).

2.6) A+B Once the entire run is aligned and leveled, it must be secured against slipping by concreting or grouting – to this end, tighten the second nut on the racks from above and dowel them or set them in concrete locally.

2.7) A+B Cover the channel with pour protection to avoid concrete spills on the channel surface.

2.8) A During concreting or grouting, a spacer which later creates the groove for a high elasticity joint between the channel wall and the floor must be inserted.

2.8) B The perforated flange plate must be evenly concreted/grouted.

2.9) A+B When applying the grout, care must be taken to ensure that it fully encloses the external contour of the channel, without forming bubbles. The channel must be fully supported. Otherwise the channel body may deform under loading at a later point.

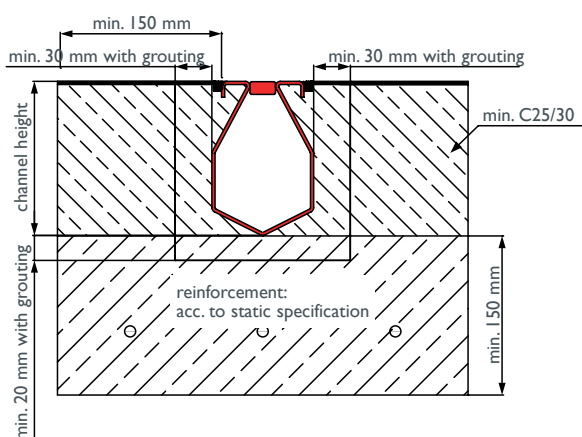
2.10) A+B When pouring and vibrating the concrete, take care that the position and shape of the channel body does not change.

3) A We recommend creating a maintenance joint between the BG-OMEGA channel and the road connector. The maintenance joint should be installed using a high elasticity sealant. Apply coating in accordance with the coating manufacturer's specifications.

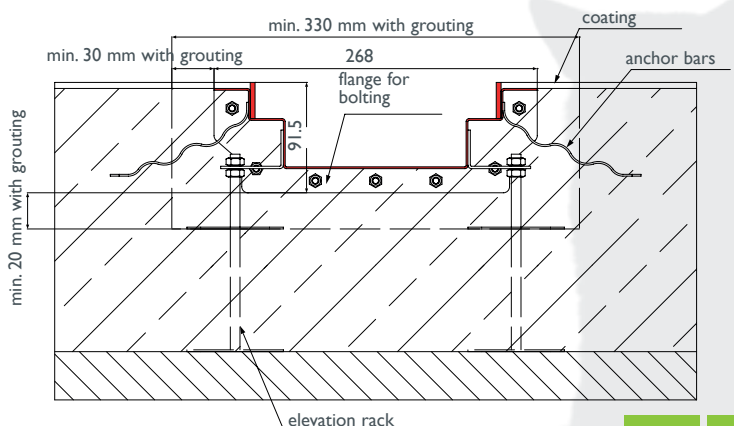
4) A All adjoining floor covering surfaces should be permanently approx. 1-1.5 mm higher than the surface of the channel in order to ensure proper water drainage.

5) A+B Cleaning and maintenance work: in areas in which higher exposure to chemical substances (e.g. de-icing chemicals, acids, bases, etc.) is to be expected, we recommend cleaning the channel regularly in order to prevent deposits.

BG-OMEGA installation examples:



BG-SIGMA installation examples:

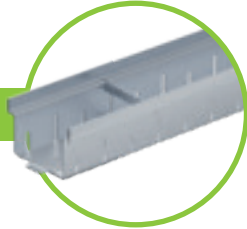




Materials description

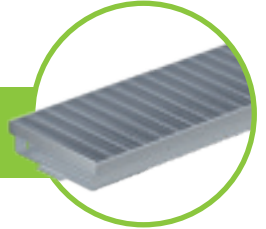
Properties for material selection

galvanised steel



Steel elements in the channels systems are covered with a protective layer of zinc. To ensure lasting corrosion protection, this layer must itself be protected against mechanical and chemical damage. Contact with calcareous or cement-bound materials (screed, etc.) can destroy or dissolve the protective zinc layer. Condensation also corrodes the protective zinc layer through white rust formation – this is not a defect. Edges cut on-site of galvanised channel bodies and covers are to be suitably treated for corrosion protection.

stainless steel 1.4301



Contrary to popular belief, stainless steel can corrode. Base metals (in dust or chip form, for example) cause contact corrosion on stainless steel surfaces, forming 'rust spots'. Regular cleaning must be ensured in case of contact with road salt.

For our stainless steel edges and grates, AISI no. 1.4301 (V2A) is used as standard. Stainless steel grates made of AISI no. 1.4404 (V4A) are available for an extra charge.



ADVISORY: Galvanised channel elements may not be laid on fresh lime mortar or cement mortar, and may not be grouted with acetic acid silicone in order to avoid accelerated corrosion.

Further product highlights for GALA construction.

FILCOTEN® light

Nominal width 100, 150 **up to class C 250 kN**



- Channel body made of FILCOTEN HPC High Performance Concrete
- with or without slope
- in-lay slotted, mesh or ductile iron gratings
- mini elements with height 55 mm

Application areas

Residential and lot driveways, garage entrances, terraces, sports and garden facilities, pedestrian zones, sidewalks



Technical data: www.bg-graspointner.com/FILCOTEN_light

FILCOTEN® yard drainage

300 x 300 **up to class B 125 kN**



- Point drainage element made of FILCOTEN HPC High Performance Concrete
- with or without ductile iron frame
- mesh or ductile iron gratings with fiX lock
- incl. odour trap and silt bucket

Application areas

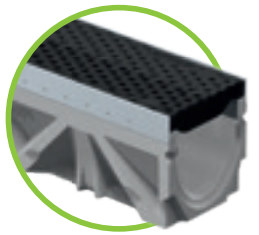
Outdoor areas, courtyard and garage entrances, parking areas, schoolyards, gardening and landscaping



Technical data: www.bg-graspointner.com/FILCOTEN_Hofablauf

FILCOTEN® tec

Nominal width 100, 150, 200 **up to class C 250 kN**



- Channel body made of FILCOTEN HPC High Performance Concrete
- with integrated galvanised steel or stainless steel edges
- with or without slope
- Slotted, perforated and mesh grates, COMBee design grates and ductile iron grates with fiX self-locking system
- mini elements with height 80/100 mm

Application areas

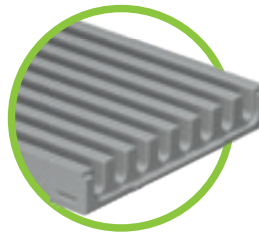
Parking lots, pedestrian zones, parks, city squares, office buildings, sports and leisure facilities



Technical data: www.bg-graspointner.com/FILCOTEN_tec

FILCOTEN® parkline

Nominal width 150, 300 **up to class C 250 kN**



- Channel body made of FILCOTEN HPC High Performance Concrete
- without slope
- element heights 35 and 50 mm
- slot width 12.5/17/18 mm
- no cover needed

Application areas

Parking garages, parking decks, garages, parking areas, production plants



Technical data: www.bg-graspointner.com/FILCOTEN_parkline



GRASPOINTNER
Sustainable innovation.

BG-Graspointner GmbH
Gessenschwandt 39
4882 Oberwang
AUSTRIA

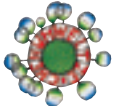
Tel.: +43 6233/8900-0

Fax: +43 6233/8900-303

E-Mail: office@bg-graspointner.com

Web: www.bg-graspointner.com

Innovation & environmental awareness
also apply for our print products.



Printed according to criteria documents of the austrian Eco-Label
„printed products“: gugler*print, Melk, UWZ-Nr. 609, www.gugler.at



This paper comes from
sustainably managed forests and
controlled sources.
www.pefc.at

greenprint* Printed within climate-positive guidelines.

* Our contribution to the reforestation project of BOKU Wien in Ethiopia.



Your Partner for BG-Graspointner Drainage Systems