



Wall mounted units



Total comfort at home

Why choose Daikin?

Daikin is the world leader when it comes to air conditioning and heating. Thanks to our constant innovation in **comfort, energy efficiency, control** and **reliability** we define the benchmarks for quality within the industry.

Comfort

Why choose a wall mounted unit?

Wall mounted units are simple to install and can be less intrusive than floor mounted units. They can be placed discreetly, high on a wall, where they do not distract from your décor. Whether your rooms are large or small, we have units with the capacities to provide the climate you want and which suit your budget. We can offer you anything from high-efficiency design units, to units which offer excellent value for money.

What is an air-to-air heat pump?

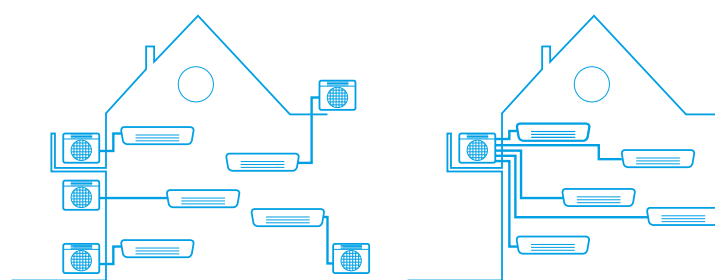
Heat pumps extract heat from the outside air, even in cold weather. They use an electrically powered compressor and are extremely effective at heating a flat or a house. Daikin heat pumps are silent and discreet, and use state-of-the-art technology to keep your energy bills as low as possible. With a Daikin heat pump, 80% of the energy used to heat your home comes from the outside air, a free and infinitely renewable resource! For cooling, the system is reversed, extracting heat from the indoor air.

One room or more, the choice is yours

By choosing a multi outdoor unit, you can connect up to five indoor units to a single outdoor unit to create the perfect climate everywhere in your property. All the indoor units can be individually controlled and do not need to be installed in the same room or even at the same time.

Save space with a multi outdoor unit

A multi outdoor unit not only allows you to connect up to five indoor units, it also saves you precious space on your balcony, terrace, wall or garden, as you only need one outdoor unit for all your cooling and heating requirements.



pair application

multi application



✓ Energy Efficiency

BLUEEVOLUTION

Thinking beyond today

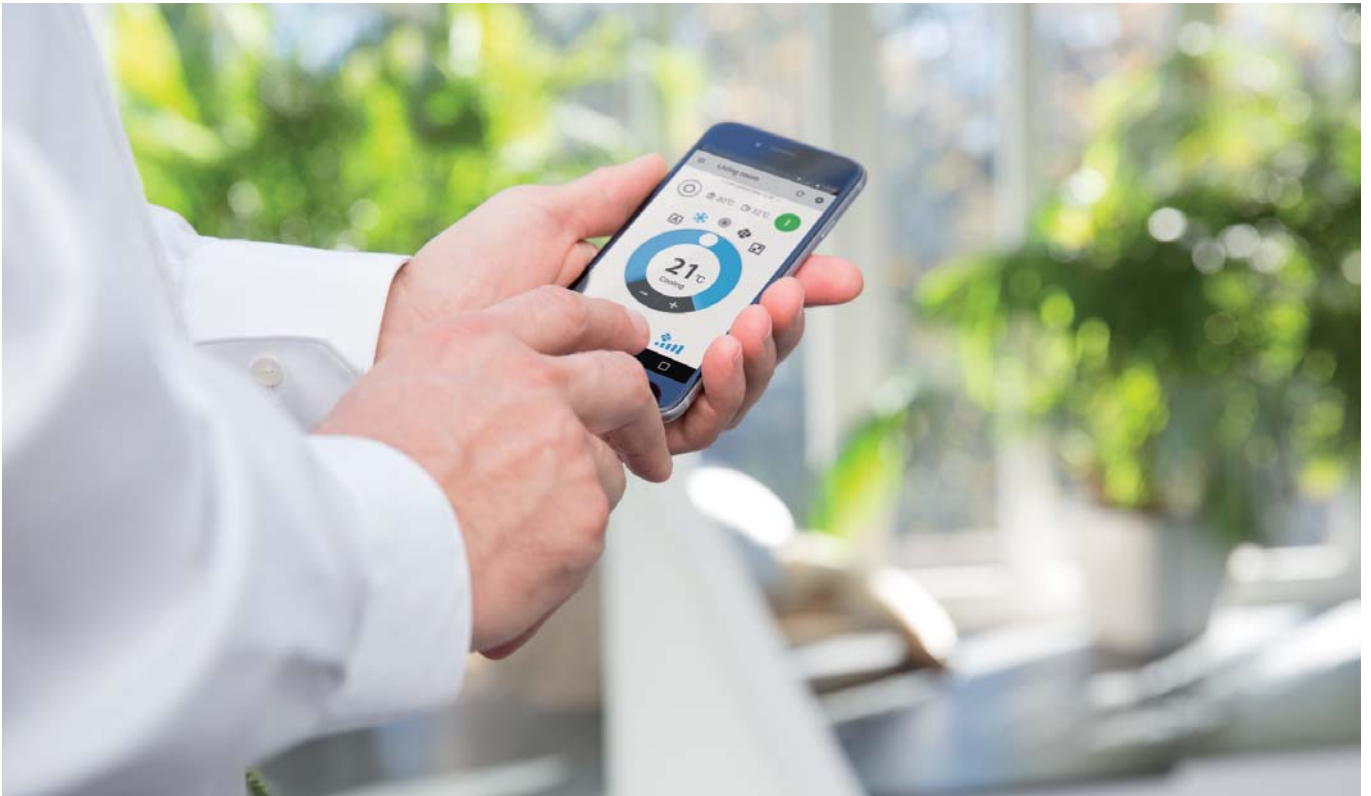
From 2025 on, the European F-gas regulation prescribes the use of refrigerants with a GWP below 750 for all pair split air conditioning installations with a refrigerant charge below 3kg. R-410A (GWP 2087.5) will remain available for other applications and service.

Daikin first introduced R-32 in 2012. Its low GWP of 675, competitive energy efficiency, safety and affordability make it very attractive. Since 2016, Daikin has offered you a unique **Bluevolution** range of pair and multi units that once again sets the benchmark for residential air conditioning. An intelligent and fresh design combines leading efficiency values with the highest level of comfort.

An old friend who doesn't make trouble

Using R-32 is not unknown territory because R-410A is a blend of 50 % R-32 and 50 % R-125. Additional benefits of using the single component refrigerant R-32 include the prevention of fractioning or gliding problems and easier recharging and recycling.

With working pressures similar to R-410A, R32 offers the possibility of charging in both liquid and gas phase. Thanks to the availability of tools suitable for both R-32 and R-410A equipment, deciding on the Daikin Bluevolution range is easy.



Always in control, no matter where you are



The Daikin Online Controller application can control and monitor the status of your heating system or up to 50 split air conditioning units and allows you to:

Monitor:

- › Monitor the status of your air conditioning or heating system
- › Consult **energy consumption graphs**

Control:

- › Control the **operation mode**, set temperature, fan speed and powerful mode, air direction and filtering (streamer) function
- › Remotely control your system and domestic hot water
- › Control **multiple** units, zone by zone (Split and Daikin Altherma integrated bi-zone only)

Schedule:

- › Schedule the set temperature and operation mode with up to **6 actions per day for 7 days**
- › Enable **holiday mode**
- › View in an intuitive mode
- › Integrate 3rd party products & services via IFTTT
- › Demand control/power power limitation (Split only)





If this, then that

Programme your unit to reflect your lifestyle. Connectable with different appliances via the iFTTT platform, you can control all element of your home from a distance. For example: If you leave your house, then your heating will turn off.

IFTTT: make your work flow

IFTTT is a solution that connects compatible 3rd party products and services (e.g. smart meters, lights, thermostats), so they work best for you.

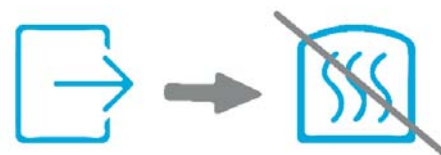
Within IFTTT, two operation set-ups can be made:

- › DO: it simply executes an action (e.g.: on/off)
- › IFTTT stands for If This Then That and allows you to automate actions (Then That) depending on certain triggers (If This)

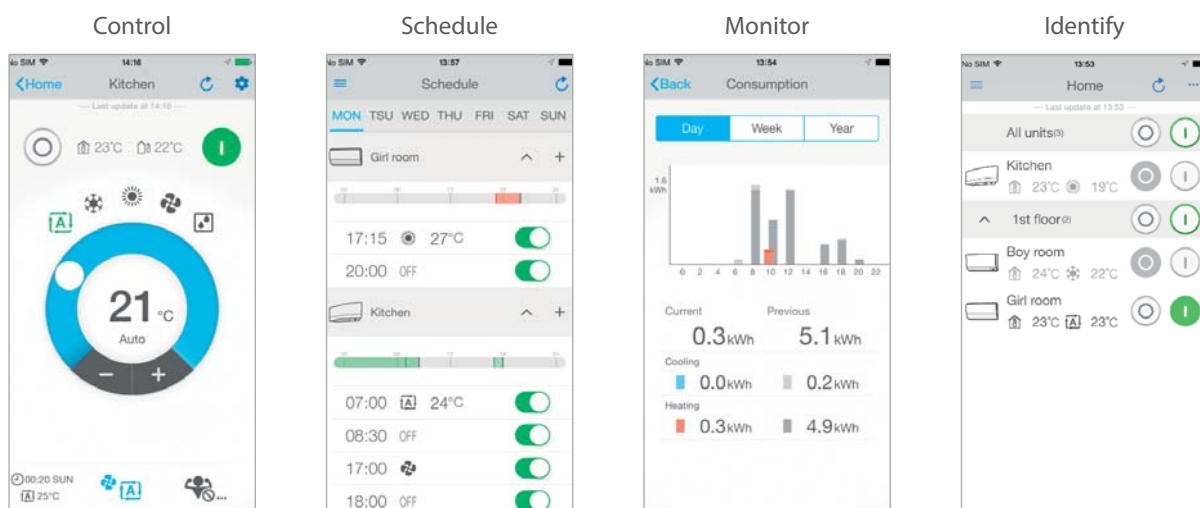
Example

IF you exit an area, **THEN** turn off the heating.

The trigger is location, which is determined by your smartphone. If you leave an area, such as your house for example, your heating will turn off automatically.



App with intuitive lay-out



Control operation mode, temperature, air purification, fan speed & direction

Schedule the set temperature, operation mode and fan speed

Monitor your energy consumption, set holiday schedule

Identify the rooms in your house

Daikin service

Creating the perfect indoor climate goes beyond purchasing and installing a product. It's also about achieving year-round comfort, energy efficiency, reliability and control. At Daikin, we offer a selection of support and maintenance services to ensure your system achieves optimal performance throughout its lifetime.

An optimal installation at minimal cost

Through our support services, a well maintained installation achieves:

- ✓ Higher energy efficiency
- ✓ A longer life cycle
- ✓ Compliance with the latest legal and regulatory requirements

Supplier and service provider

From selecting the right climate solution to starting up, monitoring and maintaining it, Daikin is ready to support you through every step of the process. Even if you do not have a Daikin installation, you can still benefit from Daikin services provided by our helpdesk staff and our team of qualified specialists and service engineers.

What we offer

- ✓ **Operation, maintenance and repairs**
Together with our Service Partners, we offer a range of service plans to oversee, manage and monitor your installation.
- ✓ **Upgrades and optimisations**
To enhance the performance and extend the lifetime of your system, we have developed a variety of upgrades.
- ✓ **Daikin commissioning service**
From the start up and testing to the final fine-tuning, our Daikin Service representatives are there to offer support for every step of the installation process. Our effective and efficient practices help all installers ensure a Daikin installation continues to run at peak performance.
- ✓ **Daikin project support and helpdesk**
Whether it's selecting the right solution for your application or integrating our HVAC-R systems into your building management system, our experienced specialists and engineers are ready to assist you.
- ✓ **Daikin warranty policy**
Daikin has a broad and transparent warranty policy. In specific contracts you can get warranty on labour in addition to the factory warranty on parts.
- ✓ **Components that you can trust**
All the components that make up a Daikin solution are high quality. This means that if a component is replaced by a Daikin installer, you can rest assured that your installation will maintain at its peak efficiency and performance.

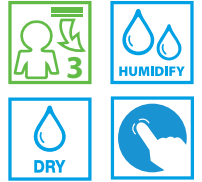


BLUEVOLUTION Range



Complete climate control with (de)humidification, air purification & ventilation with top efficiencies in heating & cooling.

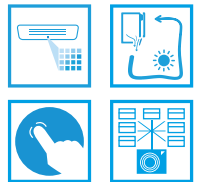
> Details on page 8&9



stylish

Where innovation meets creativity

> Details on page 10&11



Design at its best, delivering superior efficiency and comfort.

> Details on page 12&13



Standard Wall Mount



Discreet, modern design for **optimal efficiency and comfort** thanks to 2-area intelligent eye.

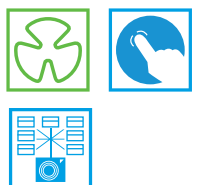
> Details on page 14&15



Low Inverter Wall Mount



Discreet wall mounted unit providing **high efficiency and comfort**.



Ururu Sarara

The best of the best

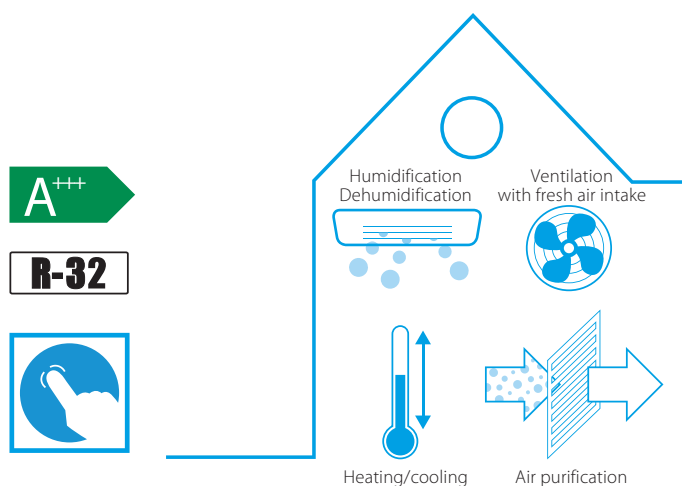




reddot design award winner 2013

Why choose Ururu Sarara?

The Daikin Ururu Sarara brings a new level of sophisticated control to air conditioning. It has five air treatment techniques which together provide a total comfort solution. In addition, the Ururu Sarara range has SEER and SCOP A+++ ratings thanks to its energy efficient compressor and heat exchanger. Because of its innovative technology, as well as its design, it won the prestigious Red Dot design award in 2013.



5 air treatment techniques

- 1 Heating and cooling in one unit, for year-round comfort with the highest energy label available
- 2 In winter, the Ururu function replenishes the moisture in the air to maintain a comfortable feel without unnecessary heating
- 3 In summer, the Sarara function removes excess moisture while maintaining an even temperature thus eliminating the need for extra cooling
- 4 Ventilation for fresh air even with closed windows
- 5 Air purification and automatic filter cleaning, for non-stop purified and allergy-free air

Flash Streamer: releases streams of high-speed electrons with strong oxidation power

Pre-filter: catches dust

Deodorising filter: odours are absorbed and broken down before the air is returned into the room

Stylish

where innovation meets creativity



White: FTXA-AW



Silver: FTXA-AS



Blackwood: FTXA-AT

Most consumers today are looking for an air conditioning system that combines the best of performance and design. With Stylish, Daikin balances function and aesthetics to create an innovative product that suits any interior.

Why choose Stylish?

Stylish brings together excellent design and technology to deliver a total climate solution for any interior. Measuring only 189 mm, Stylish is the thinnest unit on the market in the design segment for wall mounted units and uses innovative features to achieve the best in comfort, energy efficiency, reliability and control.



BLUEVOLUTION

Available in 3 colours

- › Users can choose from **three distinct colours** (white, silver and blackwood)
- › **Curved corners create** an unobtrusive and space-saving design
- › **Thin dimensions** make it the most compact design unit on the market
- › Perfect indoor air quality: the flash streamer captures viruses and allergens leaving you with a cleaner indoor environment
- › Award winning design: Stylish earned the Good Design Award, iF award and Reddot award in 2018 for its innovative look and functional capabilities



GOOD
DESIGN



DESIGN
AWARD
2018



reddot award 2018
winner



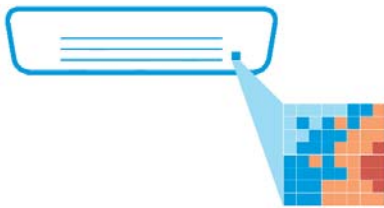
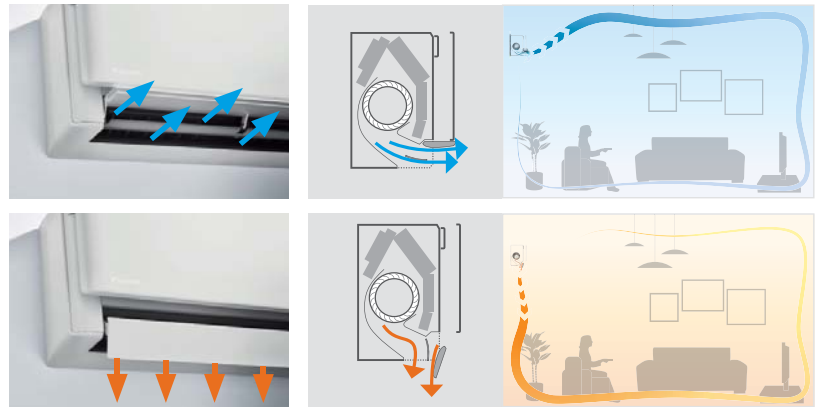
The Coanda effect

Just like in the Ururu Sarara, the **Coanda effect** optimises the airflow for a comfortable climate. By using specially designed flaps, a more focused airflow allows a better temperature distribution throughout the whole room.

How it works

Stylish determines the airflow pattern based on whether the room needs heating or cooling. When Stylish is in heating mode, two flaps will direct air downward (vertical airflow), while in cooling mode the flaps will move air upward (ceiling airflow).

By creating two different airflow patterns, Stylish prevents draughts and establishes a more stable and comfortable room temperature for occupants.

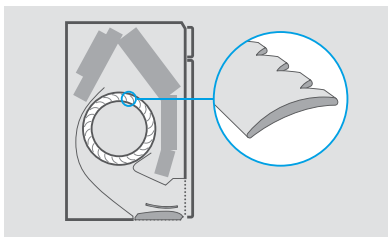


The grid eye sensor measures the surface temperature of a room by dividing it into a grid with 64 different squares.

Grid eye sensor

Stylish uses a **grid eye sensor** to detect the surface temperature of a room to create a more comfortable climate.

After determining the current room temperature, the grid eye sensor distributes air evenly throughout the room before switching to an airflow pattern that directs warm or cool air to areas that need it.

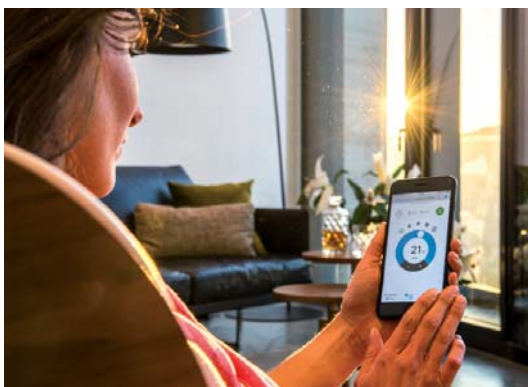


Sound dispersion and noise reduction are the results of new fan design.

Quiet operation

Stylish uses a **newly designed fan** to optimise airflow for higher energy efficiency at low sound levels.

To achieve higher energy efficiency, Daikin designed a new fan that runs efficiently within Stylish's compact dimensions. Together, the fan and heat exchanger attain top energy performance but operate at a sound level that is practically inaudible to occupants.



Daikin Online Controller

You can also manage Stylish using your smartphone. Simply connect to Wi-Fi and download the Daikin Online Controller app to begin creating your perfect climate.

Your benefits

- › Access several features to control your climate
- › Manage the temperature, operating mode, air purification and fans with interactive thermostat
- › Create different schedules and operation modes
- › Monitor energy consumption
- › Compatible with the If This Then That (IFTTT) app

Daikin Emura

Form. Function. Redesigned.



Why choose Daikin Emura

The Daikin Emura is the result of ongoing research into creating superior air conditioning solutions for European interiors. The new generation's extra functions make it even more suitable for European homes. This has been confirmed by the fact that the Daikin Emura is the winner of the prestigious Reddot design award 2014, German Design Award – Special Mention 2015, Focus Open 2014 Silver Good Design Award 2014 and iF design award 2015.

- › Premium design with two stylish finishes: silver and anthracite or pure matt white
- › High seasonal efficiencies up to A+++
- › Silver allergen removal and air purifying filter: captures allergens such as pollen
- › Whisper quiet sound levels as low as 19 decibels
- › Control and keep an overview on your energy consumption via a smartphone app or a user-friendly remote control



BLUEVOLUTION



reddot award 2014
winner



German
Design Award
SPECIAL
MENTION 2015



Focus Open 2014
Silver



GOOD
DESIGN



DESIGN
AWARD
2015



DAIKIN
emura



Standard Wall Mount

The feel-good vision of the future



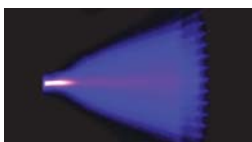
BLUEEVOLUTION

Enjoy state-of-the-art comfort

This unit typifies Daikin's future vision of air conditioning. Wrapped in fresh European design, it impresses with brilliant seasonal efficiency values up to A+++ without compromising comfort. The exceptional Daikin Flash Streamer guarantees superior air purification.

Better air quality with the Daikin Flash Streamer

This all-in-one heating and cooling unit purifies the air year round. Using electrons to trigger chemical reactions with air molecules, the flash streamer captures viruses and allergens leaving you with a cleaner indoor environment.



Online Controller App

With our online controller app, you have control from wherever you are. This full-range is the ideal choice for most applications. It also displays energy consumption for all R-32 products. 3-D air flow and 2-area intelligent eye create perfect and non-invasive air flow. And all this with superbly quiet operation.



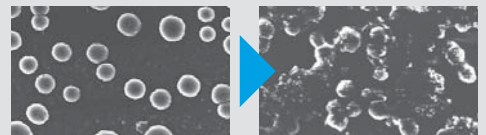
Flash Streamer technology



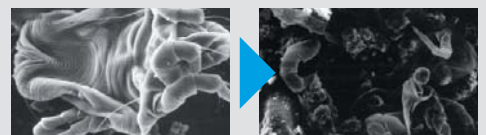
Viruses and allergens were placed on the electrode of the streamer discharge unit and then photographed through an electron microscope after being irradiated.

(Testing organization: Yamagata University and Wakayama Medical University)

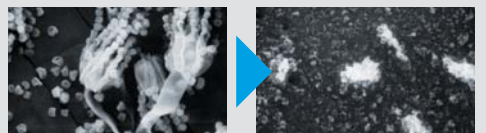
Virus
before and after irradiation



Fungal allergens
before and after irradiation



Pollen-based allergen
before and after irradiation



Daikin wall mounted units offer you all sorts of advantages



Econo mode



2-area Intelligent eye



Guaranteed operation down to -25°C



Comfort mode



Powerful mode



Whisper quiet



3D Airflow



Auto fan



Titanium apatite deodorising filter



Online controller

✓ Comfort

Creating the perfect climate is what Daikin units are all about. To ensure a perfect balance in 'comfort mode', cooling air is directed upwards to avoid cold draughts. When the unit is heating the room, hot air is directed downwards to avoid cold air at floor level. If the temperature in the room is too high or too low, 'powerful mode' will quickly adjust the temperature appropriately until the room reaches the right temperature.

Superbly silent

Loud units are a thing of the past. Daikin systems are nearly inaudible. Enjoy year-round well-being without distracting noise.

Better air quality with the Daikin Flash Streamer

Daikin's Ururu Sarara and Stylish and Perfera are all-in-one heating and cooling units that purify the air, all year round. Using electrons to trigger chemical reactions with air molecules, the Flash Streamer breaks down viruses, leaving you with perfect, allergen-free air.

Air flow

Daikin units' 3-D air flow function combines vertical and horizontal auto-swing to ensure that the stream of warm or cool air reaches the corners of even the largest spaces. Auto fan speed ensures that the fan is running at the right speed to reach or maintain the temperature you have chosen.

Filter

For your health, you want the air that you breathe to be free of dust, bacteria or other harmful particles. Daikin's titanium apatite deodorising filter removes airborne dust particles and decomposes the odours of tobacco and pets, for example. It also traps and even deactivates harmful organic chemical substances like bacteria, viruses and allergens.

✓ Energy efficiency

Creating a fresh climate at home is about more than just pure comfort. Daikin systems are easy on your wallet and good for the environment, too. The next-generation refrigerant R-32 and optimised compressors make sure you stay in your comfort zone.

Seasonal efficiency in heating and cooling

Daikin's range of advanced energy-saving technologies provide high seasonal efficiencies in heating and cooling up to A+++ , and our redesigned swing compressors are more efficient. Seasonal efficiency is a new way of rating heating and cooling products based on their energy efficiency over an entire year.

R-32: more efficient, better for the environment

Daikin uses R-32 refrigerant, so our units have a lower global warming potential and are more efficient overall.

✓ Control



Daikin wall mounted units come with a standard wireless remote controller. Our online controller ensures that you are in control wherever you are. You can control your indoor units with an app (available for iOS and Android). The weekly timer can be set to start operation at any time on a daily or weekly basis.

✓ Service

With your new Daikin installation and service programme, you can rest assured you are benefiting from the best comfort, energy efficiency, usability and service available on the market.

Benefits overview

Split

		R-32 Wall mounted				
		FTXZ-N	C/FTXA-AW/S/T	FTXJ-MW/S	C/FTXM-M	FTXP-L
						
We care	 Econo mode	•	•	•	•	•
	 2-area intelligent eye			•	•	
	 3-area intelligent eye	•				
	 Movement sensor				•	
	 Energy saving during operation standby	•	•	•	•	•
	 Home leave operation					
	 Night set mode		•	•	•	•
Comfort	 Fan only	•	•	•	•	•
	 Auto cleaning filter	•				
	 Comfort mode	•	•	•	•	•
	 Powerful mode	•	•	•	•	•
	 Auto cooling-heating changeover	•	•	•	•	•
	 Whisper quiet (down to 19dBA)	•		•	•	
	 Practically inaudible		•		•	
	 Indoor unit silent operation	•	•	•	•	•
	 Comfortable sleeping mode	•				
	 Outdoor unit silent operation	•	•	•	•	
	 3-D Air flow	•	•	•	•	
	 Vertical auto swing	•	•	•	•	•
	 Horizontal auto swing	•	•	•	•	
	 Auto fan speed	•	•	•	•	•
Air flow	 Fan speed steps	5	5	5	5	5
	 Grid Eye Sensor		•			
	 Coanda Effect	• (cooling only)	• (cooling and heating)			
	 Ururu - humidification	•				
	 Sarara - dehumidification	•				
	 Dry programme		•	•	•	•
	 Flash streamer	•	•		•	
	 Titanium apatite deodorising filter	•	•	•		•
	 Air filter	•	•	•	•	•
	 Online controller	•*	•	•	•*	•*
Remote control & timer	 Weekly timer		•	•	•	
	 24 Hour timer	•	•	•	•	•
	 Infrared remote control	•	•	•	•	•
	 Wired remote control		•*	•*	•*	
	 Centralised remote control	•	•	•	•	
Other func-	 Auto-restart	•	•	•	•	•
	Self-diagnosis	•	•	•	•	•
	Multi model application		•	•	•	• 20,25,35 class

* available as option

BLUEEVOLUTION

range



FTXZ-N + RXZ-N

BLUEEVOLUTION

	Efficiency							Indoor unit				Outdoor unit					
	Cooling capacity	Heating capacity	Seasonal efficiency (according to EN14825)					Dimensions	Sound pressure level		Sound power level	Sound power level	Refrigerant				
			Cooling/Heating (Average climate)		Cooling	Heating (Average climate)	Cooling/Heating (Average climate)		Unit	Cooling			Heating	Cooling/Heating (dBA)	Cooling/Heating (dBA)	Type/GWP	Charge (kg/TCO2Eq)
			Energy efficiency class	Pdesign (kW)													
Min./Nom./Max. (kW)	Min./Nom./Max. (kW)																
FTXZ25NV1B / RXZ25NV1B	0.6/2.5/3.9	0.6/3.6/7.5		2.50/3.50	9.54	5.90	92/831	295x798x372	19/26/33/38	19/28/35/39	54/56	59/59	R-32/675	1.34/0.9			
FTXZ35NV1B / RXZ35NV1B	0.6/3.5/5.3	0.6/5.0/9.0	A+++/A+++	3.50/4.50	9.00	5.73	136/1,100		19/27/35/42	19/29/36/42	57/57	61/61					
FTXZ50NV1B / RXZ50NV1B	0.6/5.0/5.8	0.6/6.3/9.4		5.00/5.60	8.60	5.50	203/1,427		23/30/38/47	24/31/38/44	60/59	63/64					

stylish

FTXA-AW/S/T + RXA-A

BLUEEVOLUTION

	Efficiency							Indoor unit				Outdoor unit					
	Cooling capacity	Heating capacity	Seasonal efficiency (according to EN14825)					Dimensions	Sound pressure level		Sound power level	Sound power level	Refrigerant				
			Cooling/Heating (Average climate)		Cooling	Heating (Average climate)	Cooling/Heating (Average climate)		Unit	Cooling			Heating	Cooling/Heating (dBA)	Cooling/Heating (dBA)	Type/GWP	Charge (kg/TCO2Eq)
			Energy efficiency class	Pdesign (kW)													
Nom. (kW)	Nom. (kW)																
CTXA15AW/S/T	multi connection only							295x798x189	21/25/39	21/25/39	57	multi connection only					
FTXA20AW/S/T / RXA20A2V1B	1.3/2.0/2.6	1.30/2.50/3.50	A+++/A+++	2.00/2.40	8.75	5.15	80/653		19/25/39	19/25/39		59/59	R-32/675.0	0.76/0.52			
FTXA25AW/S/T / RXA25A2V1B	1.3/2.5/3.2	1.30/2.80/4.70		2.50/2.45	8.74	5.15	101/666		19/25/40	19/25/40	60	61/61	1.30/0.88				
FTXA35AW/S/T / RXA35A2V1B	1.4/3.4/4.0	1.40/4.00/5.20		3.40/2.50	8.73	5.15	137/680		19/25/41	19/25/41							
FTXA42AW/S/T / RXA42A2V1B	1.7/4.2/5.0	1.70/5.40/6.00	A++/A++	4.20/3.80	7.50	4.60	196/1,150		21/29/45	21/29/45	62/62						
FTXA50AW/S/T / RXA50A2V1B	1.7/5.0/5.3	1.70/5.80/6.50		5.00/4.00	7.33	4.60	239/1,217		24/31/46	24/33/46							



FTXJ-MW/S + RXJ-M

BLUEEVOLUTION

	Efficiency							Indoor unit				Outdoor unit					
	Cooling capacity	Heating capacity	Seasonal efficiency (according to EN14825)					Dimensions	Sound pressure level		Sound power level	Sound power level	Refrigerant				
			Cooling/Heating (Average climate)		Cooling	Heating (Average climate)	Cooling/Heating (Average climate)		Unit	Cooling			Heating	Cooling/Heating (dBA)	Cooling/Heating (dBA)	Type/GWP	Charge (kg/TCO2Eq)
			Energy efficiency class	Pdesign (kW)													
Nom. (kW)	Nom. (kW)																
FTXJ20MV1B / RXJ20M2V1B	2.3	2.5	A+++/A++	2.30/2.10	8.73	4.61	92/638	303x998x212	19/25/38	19/28/40	54/56	61/62	R-32/675	1.30/0.9			
FTXJ25MV1B / RXJ25M2V1B	2.4	3.2		2.40/2.70	8.64	4.60	97/822			19/28/41							
FTXJ35MV1B / RXJ35M2V1B	3.5	4	A++/A++	3.50/3.00	7.19	170/913	20/26/45		20/29/45	59/59	63/63						
FTXJ50MV1B / RXJ50M1V1B	4.80	5.80	A++/A+	4.80/4.60	7.02	4.28	239/1,505		32/35/46	32/35/47	60/60	61/62					
FTXJ20MV1BW / RXJ20M2V1B	2.3	2.5	A+++/A++	2.30/2.10	8.73	4.61	92/638		19/25/38	19/28/40	54/56	61/62			0.72/0.5		
FTXJ25MV1BW / RXJ25M2V1B	2.4	3.2	2.40/2.70	8.64	4.60	97/822	19/28/41										
FTXJ35MV1BW / RXJ35M2V1B	3.5	4	A++/A++	3.50/3.00	7.19	170/913	20/26/45	20/29/45	59/59	63/63							
FTXJ50MV1BW / RXJ50M1V1B	4.80	5.80	A++/A+	4.80/4.60	7.02	4.28	239/1,505	32/35/46	32/35/47	60/60	61/62	1.30/0.9					

Standard Wall Mount

FTXM-M + RXM-M(9)

BLUEEVOLUTION

	Efficiency							Indoor unit				Outdoor unit					
	Cooling capacity	Heating capacity	Seasonal efficiency (according to EN14825)					Dimensions	Sound pressure level		Sound power level	Sound power level	Refrigerant				
			Cooling/Heating (Average climate)		Cooling	Heating (Average climate)	Cooling/Heating (Average climate)		Unit	Cooling			Heating	Cooling/Heating (dBA)	Cooling/Heating (dBA)	Type/GWP	Charge (kg/TCO2Eq)
			Energy efficiency class	Pdesign (kW)													
Min./Nom./Max. (kW)	Min./Nom./Max. (kW)																
FTXM20M2V1B / RXM20M3V1B9	1.3/2.0/2.6	1.30/2.50/3.50	A+++/A+++	2.00/2.30	8.53	5.10	83/632	294x811x272	19/25/33/41	20/26/34/39	57/54	59/59	R-32/675.0	0.76/0.52			
FTXM25M2V1B / RXM25M3V1B9	1.3/2.5/3.2	1.30/2.80/4.70		2.50/2.40	8.52		103/659			20/27/34/39							
FTXM35M2V1B / RXM35M3V1B9	1.4/3.4/4.0	1.40/4.00/5.20		3.40/2.50	8.51		140/686			20/28/35/39							
FTXM42M2V1B / RXM42M3V1B9	1.70/4.20/5.00	1.70/5.40/6.00	A++/A++	4.20/4.00	7.50	4.60	196/1,216		21/30/39/45	21/29/39/45	60/60	62/62			1.30/0.88		
FTXM50M2V1B / RXM50M3V1B9	1.70/5.00/5.30	1.70/5.80/6.50		5.00/4.60	7.33	4.60	239/1,400		31/34/39/43	31/34/39/43	59/58	63/63			1.40/0.95		
FTXM60M2V1B / RXM60M3V1B9	1.90/6.00/6.70	1.70/7.00/8.00	A++/A+	6.00/4.60	6.90	4.30	304/1,496		34/37/42/46	33/36/41/45	60/59	63/63			1.45/0.98		
FTXM71M2V1B / RXM71M2V1B	2.30/7.10/8.50	2.30/8.20/10.20	A++/A	7.10/6.20	6.11	3.81	407/2,276	35/38/43/47	34/37/42/46	60/61	66/67	R-32/675.0	1.15/0.78				

Low Inverter Wall Mount

FTXP-L + RXP-L

BLUEVOLUTION



	Efficiency							Indoor unit				Outdoor unit			
	Cooling capacity	Heating capacity	Seasonal efficiency (according to EN14825)				Dimensions	Sound pressure level		Sound power level	Sound power level	Refrigerant			
			Cooling/Heating (Average climate)		Cooling	Heating (Average climate)		Cooling/Heating (Average climate)	Unit			Cooling	Heating	Cooling/Heating (dBA)	Cooling/Heating (dBA)
	Min./Nom./Max. (kW)	Min./Nom./Max. (kW)	Energy efficiency class	Pdesign (kW)			SEER			SCOP/A	Annual energy consumption (kWh)				
FTXP20L2V1B / RXP20L2V1B	1.3/2.00/2.6	1.30/2.50/3.50	A++/A++	2.00/2.20	6.79	4.65	104/662	286x770x225	20/25/39	21/28/39	55/55	60/61	R-32/675.0	0.70/0.48	
FTXP25L2V1B / RXP25L2V1B	1.3/2.50/3.0	1.30/3.00/4.00		2.50/2.40	6.92	4.61	127/728		20/26/40	21/28/40					
FTXP35L2V1B / RXP35L2V1B	1.3/3.50/4.0	1.30/4.00/4.80		3.50/2.80	6.62	4.64	186/845		20/27/43	21/29/40					58/58
FTXP50L2V1B / RXP50L2V1B	-/5.0/-	-/6.0/-	A++	-	5.0		260	295x990x263	31/34/43	30/33/42	59/61	61/61			1.40/0.95
FTXP60L2V1B / RXP60L2V1B	-/6.0/-	-/7.0/-			6.0		308		33/36/45	32/35/44	60/62	63/63			1.45/0.98
FTXP71L2V1B / RXP71L2V1B	-/7.1/-	-/8.2/-	A		7.1		469	34/37/46	33/36/45	62/62	66/65	1.15/0.78			

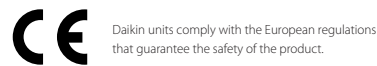
Multi model application



	Wall mounted																				
	CTXA-AW/S/T	FTXA-AW/S/T					CTXM-M	FTXM-M					FTXJ-M					FTXP-L			
	15	20	25	35	42	50	15	20	25	35	42	50	60	71	20	25	35	50	20	25	35
2MXM40M	●	●	●	●			●	●	●	●					●	●	●		●	●	●
2MXM50M9	●	●	●	●	●	●	●	●	●	●	●	●			●	●	●	●	●	●	●
3MXM40N	●	●	●	●			●	●	●	●					●	●	●				
3MXM52N	●	●	●	●	●	●	●	●	●	●	●	●			●	●	●	●	●	●	●
3MXM68N	●	●	●	●	●	●	●	●	●	●	●	●	●		●	●	●	●	●	●	●
4MXM68N	●	●	●	●	●	●	●	●	●	●	●	●	●	●	●	●	●	●	●	●	●
4MXM80N	●	●	●	●	●	●	●	●	●	●	●	●	●	●	●	●	●	●	●	●	●
5MXM90N	●	●	●	●	●	●	●	●	●	●	●	●	●	●	●	●	●	●	●	●	●



DAIKIN EMURA FTXG-LW



Daikin Europe N.V. participates in the Eurovent Certification programme for Air conditioners (AC), Liquid Chilling Packages (LCP), Air handling units (AHU) and Fan coil units (FCU). Check ongoing validity of certificate online: www.eurovent-certification.com or using: www.certiflash.com

Daikin products are distributed by:

The present leaflet is drawn up by way of information only and does not constitute an offer binding upon Daikin UK. Daikin UK has compiled the content of this leaflet to the best of its knowledge. No express or implied warranty is given for the completeness, accuracy, reliability or fitness for particular purpose of its content and the products and services presented therein. Specifications are subject to change without prior notice. Daikin UK explicitly rejects any liability for any direct or indirect damage, in the broadest sense, arising from or related to the use and/or interpretation of this leaflet. All content is copyrighted by Daikin UK.

Daikin Airconditioning UK Limited The Heights Brooklands Weybridge Surrey KT13 0NY Tel 0845 6419000 Fax 0845 6419009 daikin.co.uk

London South 0845 641 9355*	London Central 0845 641 9350*	London North 0845 641 9360*	Western Region 0845 641 9320*	Midlands Region 0845 641 9370*	Northern Region 0845 641 9340*	Scottish Region 0845 641 9330*
---------------------------------------	---	---------------------------------------	---	--	--	--

* Call charges to 0845 numbers are made up of a service charge (to the organisation you are calling) and an access charge (to your phone provider). 0845 calls to Daikin UK cost 0p per minute service charge. Please check your phone company's access charge separately. Your mobile provider may charge more for these calls, if 0845 numbers are not included in your mobile package. Please check with your mobile provider.