



[www.bohle-group.com](http://www.bohle-group.com)

**Frameless glass balustrade system**  
Posiglaze from Bohle

# Quick, easy, and cost effective to install!

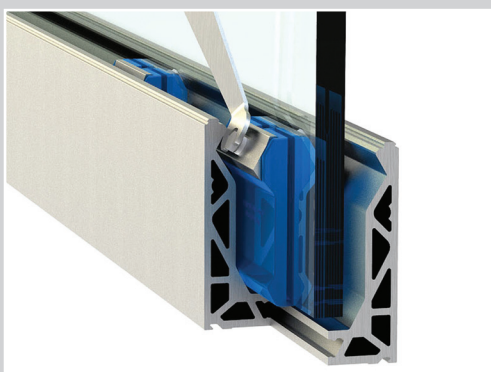
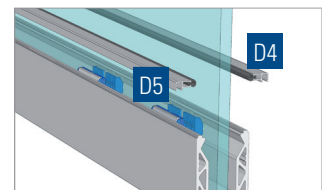
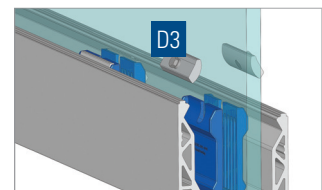
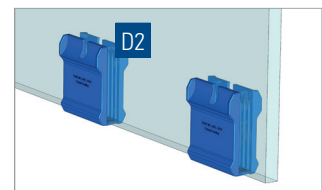
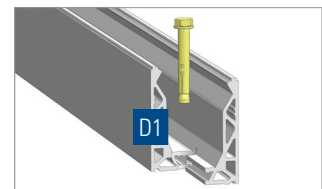
Posiglaze is an innovative aluminium channel system that holds glass panels in place for use on balustrades and partitions. Posiglaze is:

- Quick and easy to install
- Fully adjustable
- Lightweight and extremely strong
- Suitable for domestic and commercial applications
- Fully anodised in a stainless steel effect

## Posiglaze is so easy to install, in a series of simple steps:

- 01** Fit the base channel (D1) to the substructure
- 02** Clip the glass slip clamps (D2) to the bottom edge of the glass panel (we supply different sized clamps for different glass thicknesses).
- 03** Position the glass in the channel.
- 04** Place the bolt screws in the pivot clamp (D3).
- 05** Using the adjustment bolts; loosen one side and tighten the other. This will allow the alignment of the glass with the next panel and enable plumbing of the glass.
- 06** Attach the cover strip (D4) and bead gasket (D5).

Accredited to  
BS 6180:2011

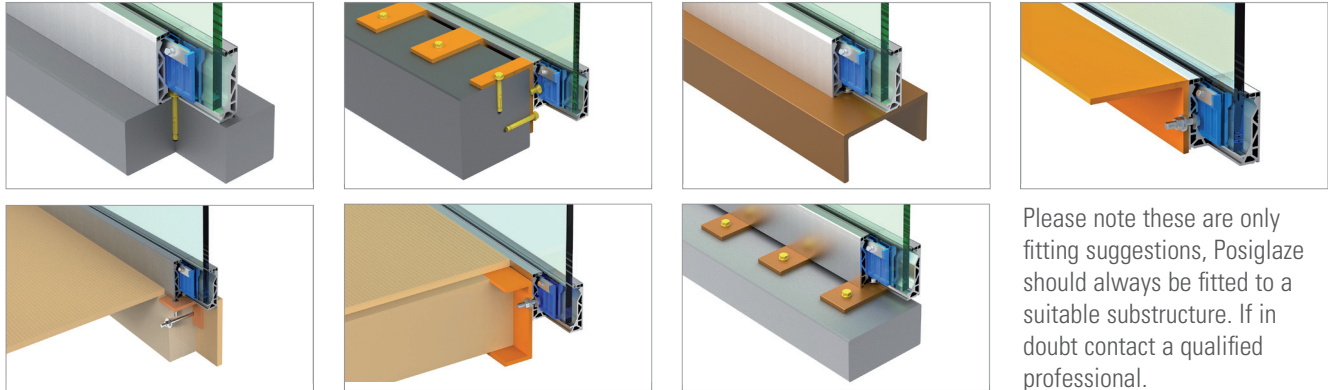


*Fast and easy glass adjustment with the use of a screw...*

Posiglaze allows the installer to easily adjust the glass panels once in place. All the installer needs to do is simply adjust the bolt screw to align the glass. Fast and simple, saving both time and money!

# Fitting scenarios

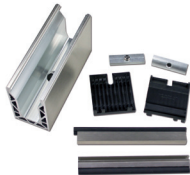
Posiglaze can accommodate a range of different glass sizes; 12 mm, 15 mm, 17.5 mm, 19 mm and 21.5 mm in a number of different scenarios, some of which are shown below.



Please note these are only fitting suggestions, Posiglaze should always be fitted to a suitable substructure. If in doubt contact a qualified professional.

Posiglaze is designed to meet with BS 6180:2011 which covers the balustrade market. It also dictates the different loading requirements in certain situations therefore Posiglaze has been designed so it can take a 1.5 kN loading on 19mm glass in a wide range of fitting positions.

## Posiglaze Kits for Surface Mounting



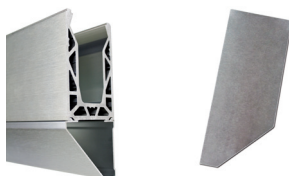
Art. No.  
BO 6003401A - E

## Posiglaze Kit for Face Fixing



Art. No.  
BO 6003405A - E

## End Caps for Face Fixed Mounting



Art. No.  
BO 6003407 - 08

## Adjustment Spanner

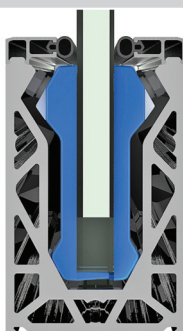


Art. No.  
BO 6003426

## Need something different?

Posiglaze is supplied in brushed stainless steel effect as standard but other finishes can be supplied on request.

Posiglaze is just one of the products in our wide range of fixtures and fittings. Contact our sales team for further information.



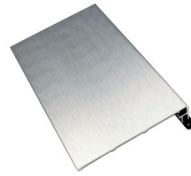


### Additional Fitting Pack



Art. No.  
BO 6003412A - BO 6003421E

### Side Cladding



Art. No.  
BO 6003406

### Joining Dowels



Art. No.  
BO 6003425

### Handrail



Art. No.  
BO 6003442 / BO 6003448

### Handrail Gasket



Art. No.  
BO 6003445A - E

### Handrail Articulated Connector



Art. No.  
BO 6003447 / BO 6003453

### Handrail End Cap



Art. No.  
BO 6003443 / BO 6003449

### Handrail Wall Connector



Art. No.  
BO 6003444 / BO 6003450

### Handrail 90° Connector



Art. No.  
BO 6003446 / BO 6003452

### Straight Connector



Art. No.  
BO 6003445 / BO 6003451

## United Kingdom and Ireland

Bohle Ltd.  
Fifth Avenue  
Tameside Park · Dukinfield  
Cheshire · SK16 4PP

T 0800 616151  
F +44 161 344 0111

info@bohle.ltd.uk  
www.bohle-group.com