

Perm-A-Barrier® Aluminum Flashing

Self-adhesive, rubberized asphalt detail membrane for air and vapour barrier applications

Product Description

Perm-A-Barrier® Aluminum Flashing is ideal for protecting and sealing critical areas of the building superstructure from the damaging effects of the elements. By minimizing air and water vapor flow through the building exterior at transition areas, Perm-A-Barrier Aluminum Flashing:

- Seals transition and detail areas to provide a continuous air barrier
- Prevents premature deterioration of the building envelope.

Installation

Surface Preparation

Surface must be smooth, clean, dry and free of voids, spalled areas, loose aggregate, loose nails, sharp protrusions or other matter that will hinder the adhesion or regularity of the flashing installation. Clean loose dust or dirt from the surface to which the flashing is to be applied by wiping with a clean, dry cloth or brush.

Temperature

Perm-A-Barrier Aluminum Flashing may only be applied in dry weather when air and surface temperatures are above -5°C .

Priming

Surfaces should be primed with one coat of GCP's solvent based primer - Bituthene® Primer S2. It is used to allow priming and installation of membrane on damp surfaces or "green" concrete. Bituthene Primer S2 can be applied by brush or roller.

Advantages

- **Fully bonded** - transmits wind loads directly to the substrate.
- **Waterproof and impermeable to moisture** - impermeable to the passage of liquid water and water vapour.
- **Aluminum film** - provides extended UV exposure, improved sealant adhesion to film, dimensional stability, high tear strength, puncture and impact resistance.
- **Cold applied** - no flame hazard; self-adhesive overlaps ensure continuity.
- **Flexible** - accommodates minor settlement and shrinkage movement.
- **Controlled thickness** - factory made sheet ensures constant, non-variable site application.
- **Aggressive, conformable adhesive** - allows self-sealing around mechanical fasteners.
- **Wide application window** - Perm-A Barrier Aluminum Flashing surface and ambient temperatures at -5°C and above.

DO NOT apply any primer to Perm-A-Barrier Aluminum Flashing.

The drive for continual improvements in performance may result in product modifications. Your GCP representative will be able to provide up-to-date advice.

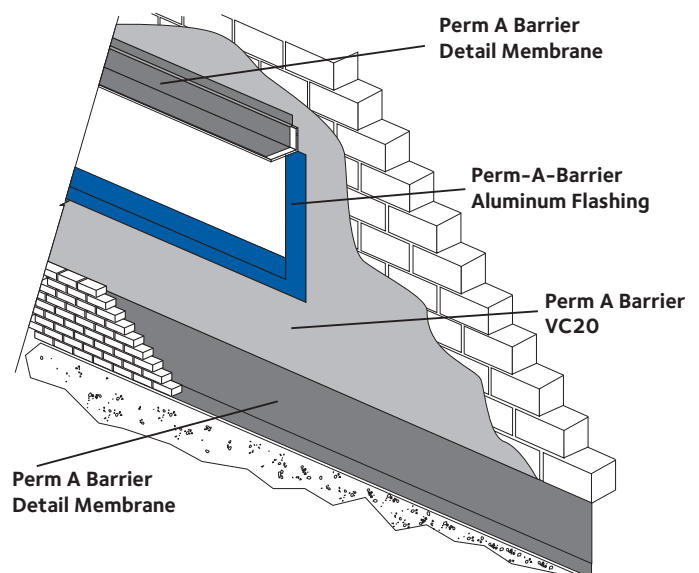
Aluminum Flashing Application

Pre-cut Perm-A-Barrier Aluminum Flashing to easily handled lengths. Peel release paper from roll to expose rubberized asphalt and carefully position tape against substrate. Press firmly into place with a steel hand roller or the back of a utility knife as soon as possible, fully adhering the tape to the substrate to prevent water from migrating under the Perm-A-Barrier Aluminum Flashing. Overlap adjacent pieces 50 mm and roll overlap with a smooth seam roller.

Perm A Barrier VC 20 and Perm A Barrier Detail Membrane

Apply a bead of Bituthene Mastic along all top edges, cuts, penetrations and trowel into place.

If wrinkles develop, carefully cut out affected area and replace in similar procedure outlined in the application section. The repair



Details shown are typical illustrations only and not working drawings. For assistance with working drawings and additional technical advice please contact GCP Technical Services.

Supply

Perm-A-Barrier® Aluminum Flashing		
Widths	Rolls per carton	Approx. Weight per roll
100 mm x 15 m	18 rolls	1.6 kg
150 mm x 15 m	12 rolls	2.4 kg
225 mm x 15 m	6 rolls	3.7 kg
300 mm x 15 m	6 rolls	4.8 kg
Ancillary Products: Bituthene® Primer S2		
Coverage	5 & 20 litre can 10-12 sq m per litre (depending upon method of application, surface porosity and ambient temperature)	
Bituthene Mastic	4.5 litre can	

Physical Properties

Property	Typical Value	Test Method
Thickness	1 mm	ASTM D3767 method A
Minimum tensile strength, membranes	4.1 MPa (600 psi)	ASTM D412 die C modified
Minimum tensile strength, film	27.6 MPa (4000 psi)	ASTM D412 die C modified
Minimum elongation, to failure of rubberized asphalt	200 %	ASTM D412 die C modified
Pliability, at 180° bend over 25mm mandrel	Pass at -26°C	ASTM D1970
Crack Cycling, 3.2 mm at -32°C	Unaffected	ASTM C836
Minimum puncture resistance, membrane	355 N	ASTM E154
Water absorption	0.1 %	ASTM 570

All declared values shown in this data sheet are based on test results determined under laboratory conditions and with the product sample taken directly from stock in its original packing without any alteration or modification of its component parts.

piece must be pressed into place with a hand roller as soon as possible to ensure continuous and intimate contact with the substrate.

Membrane Protection

Perm-A-Barrier Aluminum Flashing must be protected from damage by other trades or construction materials.

Storage and Handling Information

All materials must be protected from rain and physical damage. Pallets of Perm-A-Barrier Aluminum Flashing must not be double stacked on the job site. Provide cover on top and all sides, allowing for adequate ventilation. Store membrane where temperatures will not exceed 30°C for extended periods.

Limitations

Perm-A-Barrier Aluminum Flashing can be used in cavity or vertical wall construction where extended UV exposure is required (up to 1 year). However,

Perm-A-Barrier Aluminum Flashing should not be used in applications such as roofing applications and open joint wall panels where it will be left permanently exposed to UV.

Health and Safety

There is no legal requirement for a Safety Data Sheet for Perm-A-Barrier membranes and flashing. Refer to product carton for additional safety information. For health and safety questions please contact GCP Applied Technologies Limited.

For Bituthene Primer S2 and Bituthene Mastic, read the product label and Safety Data Sheet (SDS) before use. Users must comply with all risk and safety phrases. SDS's can be obtained from GCP Applied Technologies.

gcpat.com | Customer Service: Tel +44 (0)1753 490000 Fax +44 (0)1753 490001

We hope the information here will be helpful. It is based on data and knowledge considered to be true and accurate, and is offered for consideration, investigation and verification by the user, but we do not warrant the results to be obtained. Please read all statements, recommendations, and suggestions in conjunction with our conditions of sale, which apply to all goods supplied by us. No statement, recommendation, or suggestion is intended for any use that would infringe any patent, copyright, or other third party right.

Bituthene and Perm-A-Barrier are trademarks, which may be registered in the United States and/or other countries, of GCP Applied Technologies Inc. This trademark list has been compiled using available published information as of the publication date and may not accurately reflect current trademark ownership or status.

© Copyright 2016 GCP Applied Technologies Inc. All rights reserved.

GCP Applied Technologies Inc., 62 Whittemore Avenue, Cambridge, MA 02140 USA.

In the UK, Ipswich Road Slough Berkshire SL1 4EQ United Kingdom

GCP0082_0816 PAB-Aluminum-Flashing



gcp applied technologies