



MultipliCITY Path Light

The MultipliCITY LED pathlight shares the graceful visual vocabulary of the collection in which robust verticals end in winged forms. Powered lights can be specified with type 4 or type 5 light distributions to provide desired light patterns and illuminance of which are achieved by variations in the number and placement of LED arrays within the luminaire.

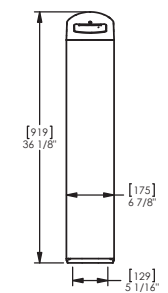
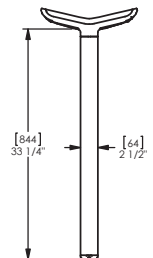
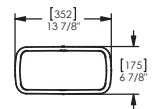
Specification

Materials

Body - powder coated cast aluminium

Dimensions

H: 919mm
W: 352mm
D: 175mm



artform
urban furniture