

For more information on Mapei visit www.barbourproductsearch.info



Systems for resin and cementitious flooring





SYSTEMS FOR RESIN AND CEMENTITIOUS FLOORING

In the resin and cementitious-based flooring sector, Mapei have developed a wide range of technologically advanced systems which offer high standards of quality for each specific area of use, including public, private, industrial and civil applications. These standards are a guarantee for the final user of their characteristics of functionality, ease of maintenance and an attractive finish.

Mapei's research laboratories have developed two main product groups: **Mapefloor System**, a complete range of epoxy and polyurethane systems, and **Ultratop System**, a self-levelling, quick-setting and quick-hardening cementitious system which, thanks to its versatility, may be used for installing both industrial and civil floors in a wide range of environments.

INDEX

p. 3	Mapefloor System 31
p. 3	Mapefloor System 32
p. 4	Mapefloor System 33
p. 4	Mapefloor System 34
p. 5	Mapefloor System 51
p. 5	Mapefloor System 52
p. 6	Mapefloor System 53
p. 6	Decor System 70
p. 7	Mapefloor System 61
p. 7	Mapefloor System 91
p. 8	Mapefloor System PU 65
p. 8	Mapefloor CPU/MF
p. 9	Mapefloor CPU/HD
p. 9	Mapefloor I 320 SL CONCEPT
p. 10	“Natural effect” Ultratop System
p. 10	“Polished effect” Ultratop System
p. 11	“Terrazzo alla Veneziana effect” Ultratop System
p. 14	Colour chart

Mapefloor System 31

Non-slip, multi-layered dressing, applied at a thickness from 0.8 to 1.2 mm, for floors with a vapour barrier subject to medium/light traffic and where high chemical resistance is required.

Products required:

Primer SN
Mapefloor I 300 SL
Mapecolor Paste
Quartz 0.5
Quartz 0.25

Mapei solution

Prepare the substrate by grinding or shot blasting, to guarantee the best performance of the **MAPEFLOOR SYSTEM 31** epoxy system. Any defects present, such as holes, pitting, cracking, etc. must be repaired beforehand using either **EPORIP**, **PRIMER SN** or **MAPEFLOOR I 300 SL**, according to the width and depth of the defects and cracks. Where required, consolidation operations must be carried out using **PRIMER MF** or **PRIMER EP**. If there are either large hollows or highly deteriorated areas present, they must be repaired using **MAPEFLOOR EP 19**, or with one of the products from the **MAPEGROUT** range (e.g. **MAPEGROUT SV**).

Spread **PRIMER SN** mixed with **MAPECOLOR PASTE** and 4 kg of **QUARTZ 0.5** onto the substrate. Pour the product as mixed on the floor to be dressed, and spread it out evenly using either a finishing trowel or smooth rake.

While the product is still fresh, fully sprinkle on a layer of **QUARTZ 0.5**.

Once the **PRIMER SN** has hardened, remove excess sand and dust with a vacuum cleaner.

Apply **MAPEFLOOR I 300 SL**, specially prepared by adding **MAPECOLOR PASTE** and 0.5 kg of **QUARTZ 0.25**. Spread on evenly and continuously using a medium-haired roller, making sure that the roller strokes cross over each other to obtain a defect-free surface.



3

Mapefloor System 32

Non-slip, multi-layered dressing applied at a thickness from 3 to 3.5 mm, for floors with a vapour barrier subject to medium to heavy traffic and where high chemical resistance is required.

Products required:

Primer SN
Mapefloor I 300 SL
Mapecolor Paste
Quartz 0.5
Quartz 0.25

Mapei solution

Prepare the substrate by shot blasting or grinding, to guarantee the best performance of the **MAPEFLOOR SYSTEM 32** epoxy system. Any defects present, such as holes, pitting, cracking, etc. must be repaired beforehand using either **EPORIP**, **PRIMER SN** or **MAPEFLOOR I 300 SL**, according to the width and depth of the defects and cracks. Where required, consolidation operations must be carried out using **PRIMER MF** or **PRIMER EP**. If there are either large hollows or highly deteriorated areas present, they must be repaired using **MAPEFLOOR EP 19**, or with one of the products from the **MAPEGROUT** range (e.g. **MAPEGROUT SV**).

Spread **PRIMER SN** mixed with **MAPECOLOR PASTE** and 4 kg of **QUARTZ 0.5** onto the substrate. Pour the product as mixed on the floor to be dressed, and spread it out evenly using either a finishing trowel or smooth rake. While the product is still fresh, fully sprinkle on a layer of **QUARTZ 0.5**.

Once the **PRIMER SN** has hardened, remove excess sand with a vacuum cleaner.

Apply an intermediate layer of **MAPEFLOOR I 300 SL**, prepared by adding **MAPECOLOR PASTE** and 3 kg of **QUARTZ 0.5**. Spread the product as mixed evenly on the previous layer using either a finishing trowel or a smooth rake. While the product is still fresh, fully sprinkle on a layer of **QUARTZ 0.5**.

Once the layer has hardened, remove excess sand with a vacuum cleaner, sand the surface and then remove all dust. Finish off using **MAPEFLOOR I 300 SL** specially prepared by adding **MAPECOLOR PASTE** and 0.5 kg of **QUARTZ 0.25**.

Apply the mix uniformly and continuously using a medium-haired roller, making sure that the roll strokes cross over each other to obtain a defect-free surface.



Mapefloor System 51

Non-slip, multi-layered dressing applied at an average thickness of 3 mm, also suitable for floors without a vapour barrier subject to medium-light traffic and where only low chemical resistance is required.

Products required:

Mapefloor I 500 W

Mapecolor Paste

Quartz 0.5

Mapei solution

Preparation of the substrate by shot blasting. Any defects present, such as holes, pitting, cracking, etc. must be repaired beforehand using either [EPORIP](#), [PRIMER SN](#) or [MAPEFLOOR I 500 W](#), according to the width and depth of the defects and cracks. Where required, consolidation operations must be carried out using [MAPECOAT I 600 W](#). If there are either large hollows or highly deteriorated areas present, they must be repaired using [MAPEFLOOR EP 19](#), or with one of the products from the [MAPEGROUT](#) range (e.g. [MAPEGROUT SV](#)). Before applying the product, wet the surface to be treated, taking care not to form puddles or to leave standing water.

Spread [MAPEFLOOR I 500 W](#) on the substrate as a primer, mixed with [MAPECOLOR PASTE](#) and 2 litres of water. Pour the mix as prepared onto the floor to be dressed, and spread it out evenly and uniformly using a finishing trowel or a notched rake.

While the product is still fresh, fully sprinkle on a layer of [QUARTZ 0.5](#).

Once the [MAPEFLOOR I 500 W](#) has hardened, remove excess sand using an industrial vacuum cleaner, sandpaper the surface and remove residual dust with a vacuum cleaner.

Finish off using [MAPEFLOOR I 500 W](#), specially prepared by adding [MAPECOLOR PASTE](#) and 2 litres of water. Lay the product uniformly and continuously using a finishing trowel or a smooth rake, and where required, pass over the surface with a medium-haired roller to create an even more uniform finish.



5

Mapefloor System 52

Non-slip, multi-layered dressing applied at an average thickness of 5 mm, also suitable for floors without a vapour barrier subject to medium-heavy traffic, and where only low chemical resistance is required.

Products required:

Mapefloor I 500 W

Mapecolor Paste

Quartz 0.5

Mapei solution

Prepare the substrate by shot blasting, being careful to not go too deep down into the substrate. Any defects present, such as holes, pitting, cracking, etc. must be repaired beforehand using either [EPORIP](#), [PRIMER SN](#) or [MAPEFLOOR I 500 W](#), according to the width and depth of the defects and cracks. Where required, consolidation operations must be carried out using [MAPECOAT I 600 W](#). If there are either large hollows or highly deteriorated areas present, they must be repaired using [MAPEFLOOR EP 19](#), or with one of the products from the [MAPEGROUT](#) range (e.g. [MAPEGROUT SV](#)). Before applying the product, wet the surface to be treated, taking care not to form puddles or to leave standing water.

Spread [MAPEFLOOR I 500 W](#) on the substrate as a primer, mixed with [MAPECOLOR PASTE](#) and 2 litres of water. Pour the mix onto the floor to be dressed, and spread it out evenly and uniformly using a finishing trowel or a notched rake. While the product is still fresh, fully sprinkle on a layer of [QUARTZ 0.5](#).

Once the [MAPEFLOOR I 500 W](#) has hardened, remove excess sand using an industrial vacuum cleaner.

Apply an intermediate layer of [MAPEFLOOR I 500 W](#), prepared by adding [MAPECOLOR PASTE](#) and 2 litres of water. Lay the product as mixed evenly on the layer prepared previously, using a finishing trowel or a notched rake. While the product is still fresh, fully sprinkle on a layer of [QUARTZ 0.5](#).

Once hardened, remove excess sand using an industrial vacuum cleaner, sandpaper the surface and remove residual dust with a vacuum cleaner.

Finish off with [MAPEFLOOR I 500 W](#), specially prepared by adding [MAPECOLOR PASTE](#) and 2 litres of water. Lay the product uniformly and continuously using a finishing trowel or a smooth rake, and where required pass over the surface with a medium-haired roller to create an even more uniform surface.



Mapefloor System 53

Self-levelling, solvent-free epoxy dressing product applied at an average thickness of 4 mm, also suitable for floors without a vapour barrier in shopping centres, septic rooms, the food industry and the pharmaceutical industry.

Products required:

Mapecoat I 600 W

Mapefloor I 500 W

Mapecolor Paste

Quartz 0.5

Mapelux Lucida or Mapelux Opaca

(Mapefloor Filler)

Mapei solution

Prepare the substrate by shot blasting, being careful to not go too deep down into the substrate. Any defects present, such as holes, pitting, cracking, etc. must be repaired beforehand using either **EPORIP**, **PRIMER SN** or **MAPEFLOOR I 500 W**, according to the width and depth of the defects and cracks. Where required, consolidation operations must be carried out using **MAPECOAT I 600 W**. If there are either large hollows or highly deteriorated areas present, they must be repaired using **MAPEFLOOR EP 19**, or with one of the products from the **MAPEGROUT** range (e.g. **MAPEGROUT SV**). Before application, wet the surface to be treated, taking care not to form puddles or to leave standing water.

Spread the **MAPECOAT I 600 W** on the substrate as a primer, diluted with water up to a maximum ratio of 1 : 1. Pour the mix onto the floor to be dressed, and spread it out evenly and uniformly using a medium-haired roller.

While the product is still fresh, spread on a light layer of **QUARTZ 0.5**.

Finish using **MAPEFLOOR I 500 W**, specially prepared by adding **MAPECOLOR PASTE** and 2 litres of water. Lay the product uniformly and continuously with a finishing trowel or a notched rake, and immediately pass over the surface with a spike roller to help completely eliminate any air entrapped in the product. To increase the abrasion resistance of **MAPEFLOOR SYSTEM 53**, we recommend applying a coat of **MAPEFLOOR FINISH 50** or **MAPEFLOOR FINISH 52 W**. It is also possible to give a slightly non-slip finish to the system by adding 5% of **MAPEFLOOR FILLER** to the **MAPEFLOOR FINISH 50**. For civil applications, we recommend treating the floor with either metallic **MAPELUX LUCIDA** or **MAPELUX OPACA** wax.



Decor System 70

Creating floors with a trowelled or mottled finish in internal environments such as homes, showrooms and shops, obtained by applying a solvent-free, epoxy resin-based system.

Products required:

Primer SN

Quartz 0,5

Mapefloor Decor 700

Mapecolor Paste

Mapefloor Finish 52 W or Mapefloor Finish 50

Mapelux Lucida or Mapelux Opaca

(Mapefloor I 300 SL TRP)

Mapei solution

Prepare the substrate by shot blasting or grinding, to guarantee the best performance from the **DECOR SYSTEM 70** epoxy system. Any defects present, such as holes, pitting, cracking, etc. must be repaired beforehand using either **EPORIP** or **PRIMER SN**, according to the width and depth of the defects and cracks. Where required, consolidation operations must be carried out using **PRIMER MF** or **PRIMER EP**. If there are either large hollows or highly deteriorated areas present, they must be repaired using **MAPEFLOOR EP 19**, or with one of the products from the **MAPEGROUT** range (e.g. **MAPEGROUT SV**).

Spread **PRIMER SN** mixed with **MAPECOLOR PASTE** and 4 kg. of **QUARTZ 0.5** on the substrate. Pour the product as mixed on the floor to be dressed, and spread it out evenly using either a finishing trowel or a smooth rake. While the product is still fresh, spread **QUARTZ 0.5** on the surface. If the surface is still porous after the first coat of primer, apply a further smoothing layer of **PRIMER SN**.

Once the **PRIMER SN** has hardened, remove excess sand with a vacuum cleaner, sandpaper the surface and remove all remaining dust.

Finish using **MAPEFLOOR DECOR 700**, specially prepared by adding **MAPECOLOR PASTE**. Spread on the product in a number of coats and strokes with a finishing trowel to obtain the finished effect required. To improve the product's resistance to scoring, apply either **MAPEFLOOR FINISH 50** or **MAPEFLOOR FINISH 52 W** on the surface of the **MAPEFLOOR DECOR 700** within 24 hours of its application. For civil applications, we recommend treating the floor with either metallic **MAPELUX LUCIDA** or **MAPELUX OPACA** wax. **MAPEFLOOR I 300 SL TRP** may be used as an alternative to the finishing products described above, at the same maximum thickness of 1.5 mm, to give the surface a lens-type finish.



Mapefloor System 61

Anti-dust and anti-oil treatment using an epoxy system in water dispersion also suitable for industrial floors without a vapour barrier, or as an impregnator for [ULTRATOP](#).

Products required:

Mapecoat I 600 W

Mapei solution

Prepare the substrate by sanding, to guarantee the best performance from the [MAPEFLOOR SYSTEM 61](#) epoxy system.

Apply a first coat of [MAPECOAT I 600 W](#) mixed with water at a ratio of up to 1 : 4, and spread the product on uniformly using a medium-haired roller.

Apply a second coat of [MAPECOAT I 600 W](#) mixed with water at a ratio of up to 1 : 3, and spread the product on homogenously using a medium-haired roller.



7

Mapefloor System 91

Renovation of old floors subject to medium-heavy traffic where high chemical resistance is required, by means of a solvent-free, epoxy mortar dressing layer with a consistency similar to a mortar screed, applied by trowel at a thickness between 6 and 15 mm.

Products required:

Primer SN

Mapefloor I 900

Mapefloor I 300 SL

Mapeflex PU21

Mapeflex PU55 SL

Mapeflex PU50 SL

Quartz 1.9

Quartz 0.5

Quartz 0.25

Mapei solution

Prepare the substrate by milling or shot blasting, and remove residual dust with a vacuum cleaner. Any defects present, such as holes, pitting, cracking, etc. must be repaired beforehand using either [EPORIP](#), [PRIMER SN](#) or [MAPEFLOOR I 900](#) mixed with [QUARTZ 0.5](#), according to the width and depth of the defects and cracks. If the substrate needs to be consolidated, use either [PRIMER MF](#) or [PRIMER EP](#). If there are either large hollows or highly deteriorated areas present, they must be repaired using [MAPEFLOOR EP 900](#) mixed with [QUARTZ 1.9](#), or with one of the products from the [MAPEGROUT](#) range (e.g. [MAPEGROUT SV](#)).

Spread the specially prepared [PRIMER SN](#) on the substrate using a medium-haired roller. The successive layers of mortar must be laid on the primer while still wet.

Apply the [MAPEFLOOR I 900](#) mortar with a consistency similar to a mortar screed, prepared beforehand by adding a package of resin to 180 kg of [QUARTZ 1.9](#).

Spread the mix using rakes, 8 mm templates and an aluminium straight edge.

Smooth over the surface using a special vibro-compact while the mortar is still wet.

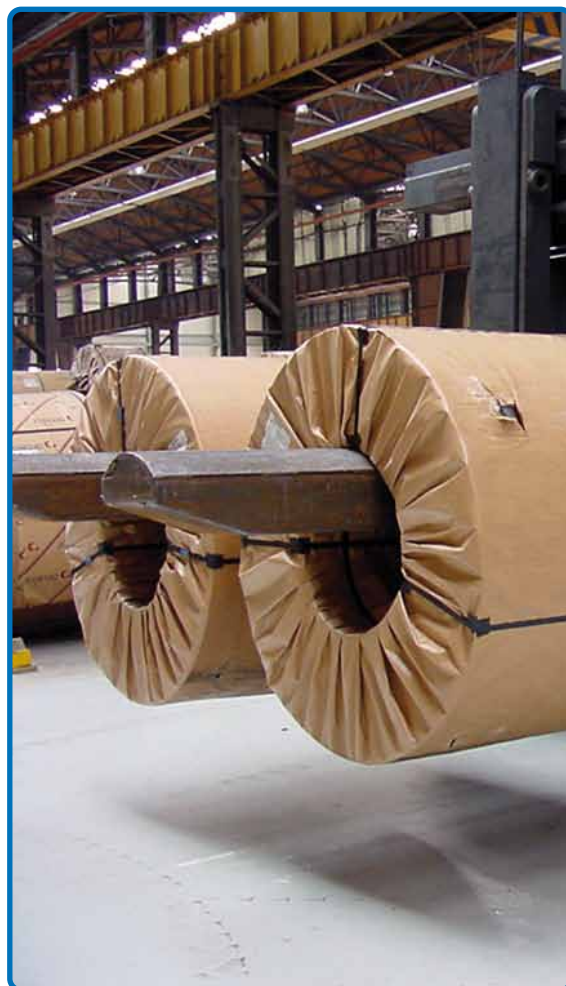
Apply a first smoothing layer of [MAPEFLOOR I 300 SL](#), prepared by adding [MAPECOLOR PASTE](#) and 1.8 kg of [QUARTZ 0.25](#). Spread the product on the previous layer and smooth down to a feather edge with a finishing trowel or a smooth rake. Use a clipper to cut the distribution and expansion joints, following the same layout as the existing ones.

Then seal the intermediate joints using [MAPEFLEX PU 21](#) (for movements of up to 5%), or [MAPEFLEX PU55 SL](#). Seal the expansion joints, using [MAPEFLEX PU50 SL](#).

Apply a second smoothing layer after a maximum of 12 hours, using [MAPEFLOOR I 300 SL](#) prepared by adding [MAPECOLOR PASTE](#) and 4.8 kg of [QUARTZ 0.25](#).

Spread the product and smooth off down to a feather edge using a finishing trowel or a smooth rake.

Finish using [MAPEFLOOR I 300 SL](#), prepared by adding [MAPEFLOOR PASTE](#) and 0.8 kg of [QUARTZ 0.5](#). Spread on evenly and continuously using a medium-haired roller, making sure that the roller strokes cross over each other to obtain a defect-free surface.



Mapefloor System PU 65

Anti-dust and anti-oil treatment using a solvent-free, transparent aliphatic polyurethane system which is permeable to water vapour for concrete industrial floors, or as a protective impregnator with the property of reducing the absorption and improving the abrasion resistance of [ULTRATOP](#).

Products required:

Mapefloor Finish 50

Mapelux Lucida or **Mapelux Opaca**
(Mapefloor Filler)

Mapei solution

Prepare the substrate by sanding with a carborundum disc or a suitable abrasive disc, and remove residual dust with a vacuum cleaner. Any defects present, such as holes, pitting, cracking, etc. must be repaired beforehand using either [EPORIP](#), [PRIMER SN](#) or [MAPEFLOOR I 300 SL](#), according to the width and depth of the defects and cracks. Where required, consolidation operations must be carried out using [PRIMER MF](#) or [PRIMER EP](#). If there are either large hollows or highly deteriorated areas present, they must be repaired using [MAPEFLOOR EP 19](#), or with one of the products from the [MAPEGROUT](#) range (e.g. [MAPEGROUT SV](#)).

Spread on prepared [MAPEFLOOR FINISH 50](#) evenly and continuously using a medium/short-haired roller. During these operations, make sure that the roller strokes cross over each other to obtain a defect-free surface. It is also possible to give a slightly non-slip finish to the system by adding from 5 to 10% of [MAPEFLOOR FILLER](#) to the [MAPEFLOOR FINISH 50](#).

The treatment with [MAPEFLOOR FINISH 50](#) gives the surface a marked wet-look finish. For civil applications, we recommend treating the floor with either metallic [MAPELUX LUCIDA](#) or [MAPELUX OPACA](#) wax.



8

Mapefloor CPU/MF

Polyurethane/cement-based dressing formulated with high resistance to chemicals, applied at a thickness from 3 to 4 mm. Ideal for floors in the chemical industry, pharmaceutical and food industry (sugar processing and mineral water bottling plants), the textiles industry and in the water treatment sector.

Products required:

Primer SN

Quartz 0.5

Mapefloor CPU/MF

Mapei solution

Prepare the substrate by heavy-gauge shot blasting or milling and the creation of hook-up cuts close to and around the vertical elements and, if present, any drainage holes. Mark out a diagonal line on the surface of the floor to be dressed, and cut along the line to a depth of approximately 2 mm. Remove residual dust with a vacuum cleaner.

Spread [PRIMER SN](#) mixed at a ratio of 1:0.4 with [QUARTZ 0.5](#) on the substrate using a smooth trowel, followed by a sprinkling of [QUARTZ 0.5](#) on the primer while still wet.

Once the primer has hardened, remove excess sand, sandpaper the surface and remove residual dust using an industrial vacuum cleaner.

Prepare the [MAPEFLOOR CPU/MF](#) by carefully mixing the 3 components which make up the product for approximately 3 minutes, in order to obtain a smooth, homogenous paste.

Spread the [MAPEFLOOR CPU/MF](#) on the floor, taking care to distribute the product homogeneously and evenly, using a notched finishing trowel or a rake with spacers.



Mapefloor CPU/HD

Polyurethane cement-based formulate, with high mechanical strength and resistance to chemicals. Applied at a thickness of from 6 to 9 mm, it is ideal for floors subject to heavy traffic, high chemical attack and subject to high thermal shock, such as storage warehouses, production facilities in the food, chemical and pharmaceutical industries.

Products required:

Mapefloor CPU/HD

Mapei solution

Prepare the substrate by milling and the creation of hook-up cuts close to and around the vertical areas and, if present, any drainage holes.

Mark out a diagonal line on the surface of the floor to be dressed, and cut along the line to a depth of approximately 2 mm. Remove residual dust with a vacuum cleaner.

Prepare the **MAPEFLOOR CPU/HD** by carefully mixing the product's 3 components for approximately 3 minutes, to obtain a smooth, homogenous paste.

Spread the **MAPEFLOOR CPU/HD** on the floor, taking care to distribute the product homogeneously and evenly, using a smooth trowel.



9

Mapefloor I 320 SL CONCEPT

Self-levelling, solvent-free epoxy dressing product with a granular effect, to create floors which are resistant to abrasion. Available in a variety of colours.

Products required:

Primer SN

Mapecolor Paste

Mapefloor I 320 SL CONCEPT

Quartz 0.5

Mapei solution

Prepare the substrate by grinding or shot blasting, to guarantee the best performance from the **MAPEFLOOR I 320 SL CONCEPT** epoxy system. Any defects present, such as holes, pitting, cracking, etc. must be repaired beforehand using either **EPORIP** or **PRIMER SN**, according to the width and depth of the defects and cracks. Where required, consolidation operations must be carried out using **PRIMER MF** or **PRIMER EP**. If there are either large hollows or highly deteriorated areas present, they must be repaired using **MAPEFLOOR EP 19**, or with one of the products from the **MAPEGROUT** range [e.g. **MAPEGROUT SV**].

Spread the first coat of **PRIMER SN** mixed with **QUARTZ 0.5** on the substrate.

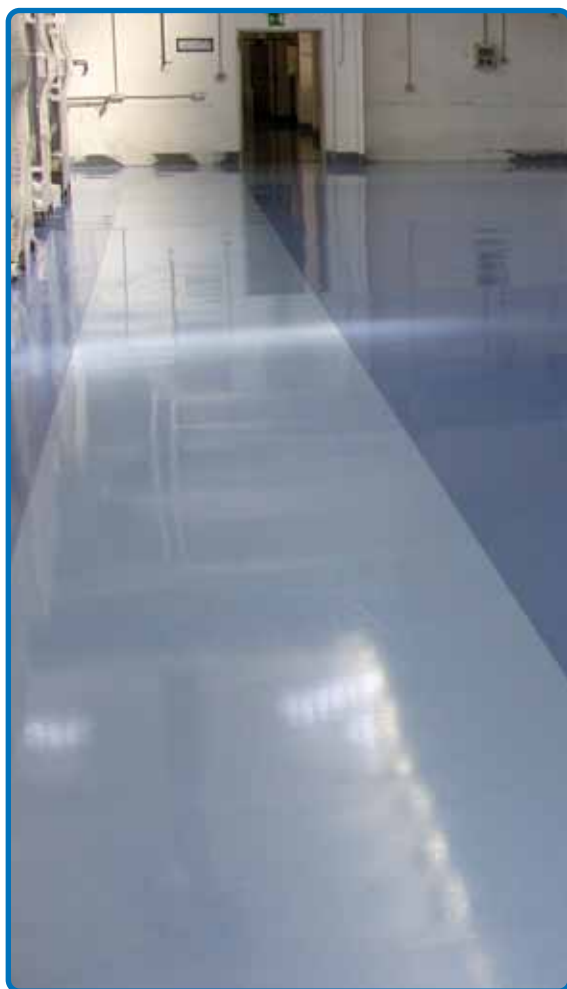
Pour the product as mixed on the floor to be dressed, and spread it out evenly using either a finishing trowel or a smooth rake. While the product is still wet, fully sprinkle on a layer of **QUARTZ 0.5**.

Remove excess quartz. Once the **PRIMER SN** has hardened, remove the excess sand and all residual dust with a vacuum cleaner.

Spread on the second coat of **PRIMER SN** with **MAPECOLOR PASTE** admix (choose a colour similar to the final colour required) and **QUARTZ 0.5**. Pour the product as mixed on the floor to be dressed, and spread it out evenly using either a finishing trowel or a smooth rake. While the product is still fresh, apply a layer of **QUARTZ 0.5**.

Remove excess quartz. Once the **PRIMER SN** has hardened, remove the excess sand and all residual dust with a vacuum cleaner.

Apply the finishing layer, by spreading on a layer of at least 2 mm of specially prepared **MAPEFLOOR I 320 SL CONCEPT**, making sure that the product is distributed evenly and continuously using a finishing trowel.



“Natural effect” Ultratop System

Formation and repair of the functionality of floors used in industry, shopping centres and supermarkets by spreading self-levelling, abrasion-resistant, ultra fast-setting cementitious mortar at a thickness between 5 and 40 mm. The system is also suitable for creating internal cementitious floors in civil environments.

Products required:

Primer G or **Mapeprim SP** or **Primer SN**

Ultratop

Mapefloor Finish 50 or **Mapefloor Finish 52 W** or **Mapecoat I 600 W**

Mapelux Lucida or **Mapelux Opaca**

(Mapefloor Filler)

Mapei solution

Prepare the substrate by shot blasting or milling, and remove all residual dust with a vacuum cleaner. If the substrate is damaged or cracked, it must be repaired using **EPORIP** or **EPOJET** followed by a sprinkling of **QUARTZ 0.5**.

Apply two or three coats of **PRIMER G** diluted with water at a ratio of from 1 : 1 to 1 : 2 according to the absorption of the substrate (but without creating a surface film) on concrete surfaces, or **MAPEPRIM SP** prepared accordingly, on ceramic or natural stone surfaces.

Mixed surfaces, such as concrete/ceramic or concrete/natural stone, for example, may be primed using **PRIMER SN** reinforced with **MESH 320** followed by a sprinkling of **QUARTZ 1.2**.

Spread on the **ULTRATOP**, preferably blended using a rendering machine, and then level off with a metal trowel or a smoother.

Apply two coats of **MAPECOAT I 600 W** diluted as required with water, and spread the product evenly and homogeneously using a medium-haired roller. As an alternative, **MAPEFLOOR FINISH 50** may be used. Spread it on with a short-haired, mohair roller, making sure that the roller strokes cross over each other to obtain a defect-free surface. **MAPECOAT I 600 W** and **MAPEFLOOR FINISH 50** give a wetlook finish to the floor.

If the colour of the floor needs to remain the same, use **MAPEFLOOR FINISH 52 W**.

If a slightly non-slip finish is required on the surface of the floor, add 5% of **MAPEFLOOR FILLER** to the **MAPEFLOOR FINISH 50** and **MAPEFLOOR FINISH 52 W**. We advise against mixing **MAPEFLOOR FINISH 52 W** with **MAPEFLOOR FILLER** if dark-coloured **ULTRATOP** is used.

For civil applications, after the finishing treatment, the surface must be waxed using either **MAPELUX LUCIDA** or **MAPELUX OPACA**.



“Polished effect” Ultratop System

Formation of polished floors, by spreading self-levelling, ultra fast-setting cementitious mortar in civil environments, such as showrooms, shops, restaurants, apartments and shopping centres. The system guarantees perfectly flat, smooth, light-reflecting surfaces.

Products required:

Primer G or **Mapeprim SP** or **Primer SN**

Ultratop

Ultratop Stucco

Keraseal or **Mapefloor Finish 50** or **Mapefloor Finish 52 W**

Mapelux Lucida or **Mapelux Opaca**

Mapei solution

Prepare the substrate by shot blasting or milling, and remove all residual dust with a vacuum cleaner. If the substrate is damaged or cracked, it must be repaired using **EPORIP** or **EPOJET** followed by a sprinkling of **QUARTZ 0.5**.

Apply two or three coats of **PRIMER G** diluted with water at a ratio of from 1 : 1 to 1 : 2 according to the absorption of the substrate (but without creating a surface film) on concrete surfaces, or **MAPEPRIM SP** prepared accordingly, on ceramic or natural stone surfaces.

Mixed surfaces, such as concrete/ceramic or concrete/natural stone for example, may be primed using **PRIMER SN** reinforced with **MESH 320**, followed by a sprinkling of **QUARTZ 1.2**.

Spread the **ULTRATOP**, preferably blended using a rendering machine, and then level off with a metal trowel or a smoother.

Dry polish the surface (approximately 2 or 3 days after applying the **ULTRATOP**) using a diamond-tipped polishing disc. For a complete treatment, we recommend 5 polishing cycles with different discs. The formation of surface micro-porosity after the first phases of the treatment must be grouted using **ULTRATOP STUCCO**.

Apply two coats of **KERASEAL** transparent, protective impregnating paint using a white cotton rag. As an alternative, **MAPEFLOOR FINISH 52 W** or **MAPEFLOOR FINISH 50** may be used.

MAPEFLOOR FINISH 52 W has the property of maintaining the colour of the floor, while **MAPEFLOOR FINISH 50** gives the surface a wetlook finish. For civil applications subject to pedestrian traffic, we recommend using **KERASEAL**. After treatment, the surface must be waxed using the metallic waxes **MAPELUX OPACA** or **MAPELUX LUCIDA**.

Since **MAPEFLOOR FINISH 52 W** and **MAPEFLOOR FINISH 50** leave an opaque finish on the surface, the polishing treatment may be reduced to just a few strokes.



“Terrazzo alla Veneziana effect” Ultratop System

Formation of polished “Terrazzo alla Veneziana” type floors, by spreading on a layer between 15 and 40 mm of self-levelling, ultra fast-setting cementitious mortar mixed with **DYNASTONE COLOR** artificial, coloured cementitious aggregates or natural aggregates in civil environments, such as shopping centres, showrooms, schools, museums, theatres, shops, offices, apartments, etc.

Products required:

Primer G or **Mapeprim SP** or **Primer SN**

Ultratop

Ultratop Stucco

Dynastone Color

Keraseal

Mapelux Lucida or **Mapelux Opaca**

Mapei solution

Prepare the substrate by shot blasting or milling, and removal all residual dust with a vacuum cleaner. If the substrate is damaged or cracked, it must be repaired beforehand using **EPORIP** or **EPOJET** followed by a sprinkling of **QUARTZ 0.5**.

Apply two or three coats of **PRIMER G** diluted with water at a ratio of from 1 : 1 to 1 : 2 according to the absorption of the substrate on concrete surfaces, or **MAPEPRIM SP** prepared accordingly, on ceramic or natural stone surfaces. Mixed surfaces, such as concrete/ceramic or concrete/natural stone, for example, may be primed using **PRIMER SN** reinforced with **MESH 320**, followed by a full sprinkling of **QUARTZ 1.2**.

Prepare the **ULTRATOP/DYNASTONE COLOR** mixture with a cement mixer, and spread on evenly using a straight edge with spacers.

Dry polish the surface (approximately 2 or 3 days after application) using a diamond-tipped polishing disc. For a complete treatment, we recommend 6 polishing cycles with different discs. The formation of surface micro-porosity after the first phases of the treatment must be grouted using **ULTRATOP STUCCO**.

Apply two coats of **KERASEAL** transparent, protective impregnating paint using a white cotton rag. After the treatment with **KERASEAL**, the surface must be waxed using metallic waxes **MAPELUX OPACA** or **MAPELUX LUCIDA**.



New Barilla windmill - Parma - Italy
Products used: “natural effect” ULTRATOP SYSTEM

Berlaymont Building underground car-park - Brussels - Belgium
Products used: “natural effect” ULTRATOP SYSTEM



IP Cleaning - Bagno (Reggio Emilia) - Italy
Products used: ULTRATOP SYSTEM, MAPEFLOOR SYSTEM 34

IKEA Shopping Centre - Padova - Italy
Products used: MAPEFLOOR SYSTEM 33, MAPEFLOOR SYSTEM 91



Solaris store - Civitanova Marche (Macerata) - Italy
Products used: ULTRATOP SYSTEM, MAPEFLOOR SYSTEM 33

Post Office - Peschiera Borromeo (Milan) - Italy
Products used: MAPEFLOOR SYSTEM 91

For more information on Mapei visit www.barbourproductsearch.info



Diamante bodywork repair shop - Montale (Pistoia) - Italy
Products used: MAPEFLOOR SYSTEM 33



FAIST Componenti S.p.A. - Montone (Perugia) - Italy
Products used: MAPEFLOOR SYSTEM 33, MAPEFLOOR SYSTEM 34



Hotel Les Fleurs - Sofia - Bulgaria
Products used: DECOR SYSTEM 70



Sisma storage depot - Bollate (Milan) - Italy
Products used: MAPEFLOOR SYSTEM 32

Floor Coatings Colour Range

MAPECOLOR PASTE

Concentrated coloured pastes for colouring neutral base products from the Mapefloor and Mapecoat Systems. Note: the colours in the Mapecolor Paste range refer to the RAL colour chart.



1001
Beige

1013
Pearl White

1015
Light Ivory

MAPEFLOOR I 320 SL CONCEPT

Self-levelling, solvent-free epoxy dressing product with a granular effect, to create floors which are resistant to abrasion. Available in a variety of colours.

Note: the colours in the **Mapefloor I 320 SL CONCEPT** range do not refer to any colour chart.

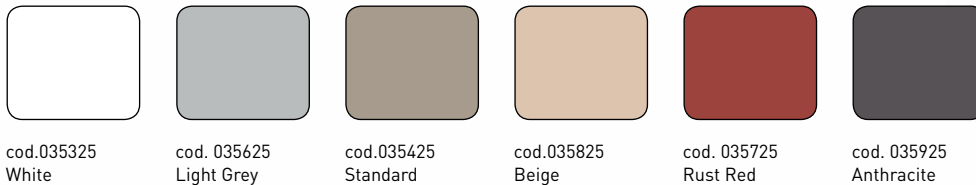


ULTRATOP

Ultra-fast setting, self-levelling mortar based on special hydraulic binders for abrasion-resistant floorings at a thickness from 5 to 40 mm.

Note: the colours in the **Ultratop** range do not refer to any colour chart.

Because of the cementitious nature of the product, the final colour may not be uniform.



DYNASTONE COLOR

Coloured cementitious aggregates used for decorating floors and for elements used in urban design.

Note: the colours in the **Dynastone Color** aggregates range do not refer to any colour chart.

Because of the cementitious nature of the product, the final colour may not be uniform.



For more information on Mapei visit www.barbourproductsearch.info



here is Mapei

Distributor



Mapei UK Ltd - Mapei House - Steel Park Road - Halesowen - B62 8HD
Tel: 0121 508 6970 - Fax: 0121 508 6960 - info@mapei.co.uk - www.mapei.co.uk

