



MICHELMERSH

Britain's Brick Specialists





MICHELMERSH
Britain's Brick Specialists

BRITAIN'S brickspecialists

WELCOME TO MICHELMERSH

As Britain's Brick Specialists, Michelmersh Brick Holdings PLC unites the best in clay traditions. The UK's premium producer of handmade and machine made bricks and pavers, we are also leaders in special shaped bricks and Terra Cotta products. We have grown and innovated from brands that enjoy rich heritages and have become some of the most trusted names behind today's prestigious built environments. The latest technology and new designs let us satisfy wider audiences and still retain our reputation for beautiful, durable, natural looking clay pieces.

Call our Central Sales Office on 0844 931 0022 for products from any of our brands.

CONTENTS

| | |
|---------------------------|-----|
| Welcome to Michelmersh | 3 |
| Introduction | 4 |
| SECTION 1 | |
| Products by Brand | 7 |
| 1a Blockleys Bricks | 8 |
| 1b Carlton Bricks | 18 |
| 1c Charnwood Bricks | 34 |
| 1d Freshfield Lane Bricks | 48 |
| 1e Michelmersh Bricks | 58 |
| 1f i-line | 66 |
| 1g Synthesis | 74 |
| 1h Pavers | 82 |
| SECTION 2 | |
| BS Specials | 88 |
| SECTION 3 | |
| BIM BRICKS | 100 |
| Image Gallery | 102 |
| SECTION 4 | |
| Products by Colour | 106 |

BUILDING the future

INNOVATION. TRADITION. EXCELLENCE.

Michelmersh produces premium, precision made bricks and pavers. Renowned for quality clay products, we go above and beyond to offer our clients a bespoke service, including handmade blending and high standards of quality assurance. Each item is carefully tailored to exacting specifications for perfect finish and lasting durability. Our products combine traditional strength and high achievement of modern standards to ensure that we are building for the future. We're therefore proud of the way we are shaping and leading the brick industry.

Our products can be used in a wide variety of contexts; they excel with sensitive conservation requirements and complement contemporary designs to form inspiring architecture. With our substantial experience of both traditional and modern prestigious schemes, our team offers a research and development service that is yet to be rivalled. We evolve the design alongside your conceptual ideas and onto the bespoke forms and blends that you desire. You think of it and we will bring it to life.

So for outstanding reliability, unparalleled workmanship and high performance that meets any requirement, you have come to the right team. Look no further than our timelessly authentic, warm, 'earthy', natural bricks to give personality to any build. Laid in harmony with its environment, we will ensure that your development will command the character and charm that it deserves when using our products. Michelmersh clay units are specified up and down the country, issued for both public and private sectors and across a multitude of profiles, from schools and hospitals to theatres and offices. This is why we choose to offer a wide cross section of colours and rich textures to meet all your needs, fulfilling the most stringent of planning requirements. We combine unbeatable quality in volume productions, that professionals can rely on, with support and logistics that beat the competition.













Design advice, superb interpretations and a first rate customer service are given to every project, no matter what the size. We are committed to providing the finest level of support with all of our premium products, designed to perform as beautifully as they look and enhancing our built environment for generations to come.

BLOCKLEYS BLACK SMOOTH
FIRE STATION, NOTTINGHAM

PRODUCTS bybrand

SECTION 1

| | | | | |
|---------|----|------------------|--|----|
| SECTION | 1a | Blockleys™ |  | 8 |
| SECTION | 1b | Carlton™ |  | 18 |
| SECTION | 1c | Charnwood™ |  | 34 |
| SECTION | 1d | Freshfield Lane™ |  | 48 |
| SECTION | 1e | Michelmersh™ |  | 58 |
| SECTION | 1f | i-line™ |  | 66 |
| SECTION | 1g | Synthesis™ |  | 74 |
| SECTION | 1h | Pavers |  | 82 |

WINDERMERE GREY
DUNASKIN STUDENT ACCOMMODATION, GLASGOW

SIMPLY
exceptional



Blockleys™

BRICKS

WELCOME TO BLOCKLEYS

Blockleys produces extruded wirecut facing bricks, clay pavers, paving accessories and special shapes, offering our customers the ideal combination of aesthetically appealing clay products.

Exceptional products.
Exceptional performance.
Exceptional delivery.

When customers are counting on your development,
you can count on Blockleys.

Products are currently manufactured in accordance with the requirements of British Standards BS EN 771-1 and BS 4729, and in compliance with independently verified ISO 9001 Quality and ISO 14001 Environmental Management Systems. Products also comply with the BES 6001 Responsible Sourcing standard. All of our products offer outstanding properties of total durability, being F2 rated and fully frost resistant.

Blockleys™ BRICKS



BLACK SMOOTH



BLACK WIRECUT

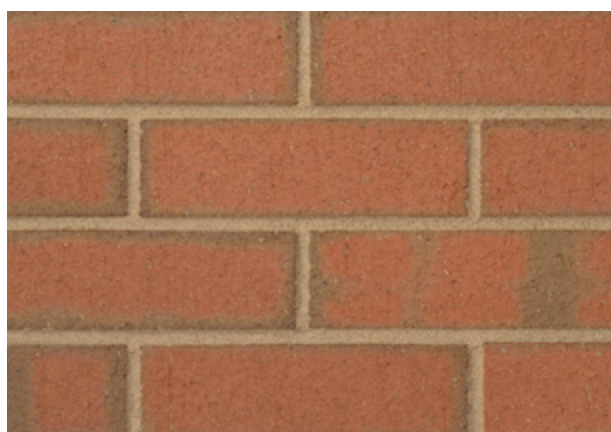


IPSWICH SMOOTH



HADLEY BRINDLE SMOOTH
65 mm & 73 mm

Our extensive range of colours and textures help to build better futures for a wide variety of building typologies including schools, hospitals, offices and apartments from both the public and private sectors, across the UK and overseas.



HADLEY BRINDLE WIRECUT



HADLEY RED SMOOTH

65 mm, 73 mm & 75 mm



HADLEY RED WIRECUT



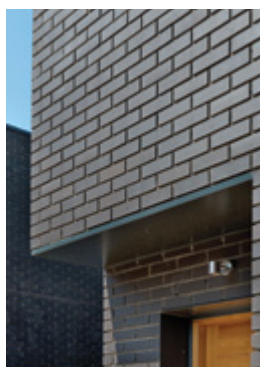
METRO BUFF SMOOTH

| | Dimensional tolerance | Dimensional range | Durability against freeze/thaw | Active soluble salts content | Gross dry density | Compressive strength (minimum) | Water absorption | Thermal conductivity | Dimensions (in mm) |
|------------------------|-----------------------|-------------------|--------------------------------|------------------------------|------------------------|--------------------------------|------------------|--------------------------------------|--|
| BLACK SMOOTH | T2 | R2 | F2 | S2 | 1640 kg/m ³ | 50 N/mm ² | Less than 12% | 0.72 (50%) W/m.K 0.79 (90%) W/m.K | 215 x 102.5 x 65 |
| BLACK WIRECUT | T2 | R2 | F2 | S2 | 1640 kg/m ³ | 50 N/mm ² | Less than 12% | 0.72 (50%) W/m.K 0.79 (90%) W/m.K | 215 x 102.5 x 65 |
| IPSWICH SMOOTH | T2 | R2 | F2 | S2 | 1640 kg/m ³ | 50 N/mm ² | Less than 12% | 0.72 (50%) W/m.K 0.79 (90%) W/m.K | 215 x 102.5 x 65 |
| HADLEY BRINDLE SMOOTH | T2 | R2 | F2 | S2 | 1640 kg/m ³ | 50 N/mm ² | Less than 12% | 0.72 (50%) W/m.K 0.79 (90%) W/m.K | 215 x 102.5 x 65 215 x 102.5 x 73 |
| HADLEY BRINDLE WIRECUT | T2 | R2 | F2 | S2 | 1640 kg/m ³ | 50 N/mm ² | Less than 12% | 0.72 (50%) W/m.K 0.79 (90%) W/m.K | 215 x 102.5 x 65 |
| HADLEY RED SMOOTH | T2 | R2 | F2 | S2 | 1640 kg/m ³ | 50 N/mm ² | Less than 12% | 0.72 (50%) W/m.K 0.79 (90%) W/m.K | 215 x 102.5 x 65 215 x 102.5 x 73 215 x 102.5 x 75 |
| HADLEY RED WIRECUT | T2 | R2 | F2 | S2 | 1640 kg/m ³ | 50 N/mm ² | Less than 12% | 0.72 (50%) W/m.K 0.79 (90%) W/m.K | 215 x 102.5 x 65 |
| METRO BUFF SMOOTH | T2 | R2 | F2 | S2 | 1520 kg/m ³ | 50 N/mm ² | Less than 12% | 0.67 (50%) W/m.K 0.74 (90%) W/m.K | 215 x 102.5 x 65 |

Blockleys™

BRICKS

BLACK SMOOTH
LITTLE KELHAM, SHEFFIELD



BUILDING
the future



Blockleys™ BRICKS



MUNICIPAL GREY SMOOTH



PARK ROYAL
65 mm & 73 mm



Blockleys combines unbeatable quality and volume production with products that encompass outstanding properties including total durability, frost resistance and nil efflorescence.



PENNINE BUFF WIRECUT



PURPLE WIRECUT



| | Dimensional tolerance | Dimensional range | Durability against freeze/thaw | Active soluble salts content | Gross dry density | Compressive strength (minimum) | Water absorption | Thermal conductivity | Dimensions (in mm) |
|-----------------------|-----------------------|-------------------|--------------------------------|------------------------------|------------------------|--------------------------------|------------------|--------------------------------------|--------------------------------------|
| MUNICIPAL GREY SMOOTH | T2 | R2 | F2 | S2 | 1520 kg/m ³ | 50 N/mm ² | Less than 12% | 0.67 (50%) W/m.K 0.74 (90%) W/m.K | 215 x 102.5 x 65 |
| PARK ROYAL | T2 | R2 | F2 | S2 | 1640 kg/m ³ | 50 N/mm ² | Less than 12% | 0.72 (50%) W/m.K 0.79 (90%) W/m.K | 215 x 102.5 x 65 215 x 102.5 x 73 |
| PENNINE BUFF WIRECUT | T2 | R2 | F2 | S2 | 1520 kg/m ³ | 50 N/mm ² | Less than 12% | 0.67 (50%) W/m.K 0.74 (90%) W/m.K | 215 x 102.5 x 65 |
| PURPLE WIRECUT | T2 | R2 | F2 | S2 | 1640 kg/m ³ | 50 N/mm ² | Less than 12% | 0.72 (50%) W/m.K 0.79 (90%) W/m.K | 215 x 102.5 x 65 |

Blockleys™

BRICKS



PORCELAIN WHITE SMOOTH*



STERLING GREY



WINDERMERE GREY
DUNASKIN STUDENT ACCOMMODATION, GLASGOW



WINDERMERE GREY
THE HIVE, MANCHESTER



We also manufacture a full range of standard Special Shaped Bricks, purpose made specials and cut & bond specials to match all of our brick range, whilst offering unbeatable customer service.



WINDERMERE GREY



WREKIN BERKSHIRE



WREKIN BUFF



WREKIN DARK RED

| | Dimensional tolerance | Dimensional range | Durability against freeze/thaw | Active soluble salts content | Gross dry density | Compressive strength (minimum) | Water absorption | Thermal conductivity | Dimensions (in mm) |
|-------------------------|-----------------------|-------------------|--------------------------------|------------------------------|------------------------|--------------------------------|------------------|--------------------------------------|--------------------|
| PORCELAIN WHITE SMOOTH* | T1 | R1 | F2 | S2 | 1303 kg/m ³ | 25 N/mm ² | Less than 9% | 0.45 (50%) W/m.K 0.51 (90%) W/m.K | 215 x 102.5 x 65 |
| STERLING GREY | T2 | R2 | F2 | S2 | 1640 kg/m ³ | 50 N/mm ² | Less than 12% | 0.72 (50%) W/m.K 0.79 (90%) W/m.K | 215 x 102.5 x 65 |
| WINDERMERE GREY | T2 | R2 | F2 | S2 | 1520 kg/m ³ | 50 N/mm ² | Less than 12% | 0.67 (50%) W/m.K 0.74 (90%) W/m.K | 215 x 102.5 x 65 |
| WREKIN BERKSHIRE | T2 | R2 | F2 | S2 | 1640 kg/m ³ | 50 N/mm ² * | Less than 12% | 0.72 (50%) W/m.K 0.79 (90%) W/m.K | 215 x 102.5 x 65 |
| WREKIN BUFF | T2 | R2 | F2 | S2 | 1520 kg/m ³ | 50 N/mm ² | Less than 12% | 0.67 (50%) W/m.K 0.74 (90%) W/m.K | 215 x 102.5 x 65 |
| WREKIN DARK RED | T2 | R2 | F2 | S2 | 1640 kg/m ³ | 50 N/mm ² | Less than 12% | 0.72 (50%) W/m.K 0.79 (90%) W/m.K | 215 x 102.5 x 65 |

*No test results to prove nil efflorescence.

WOLDS MINSTER BLEND
MOORLAND AVENUE, LEEDS



Carlton™ BRICKS

WELCOME TO CARLTON

With over 130 years' experience of making high-quality products, Carlton is a name that you can depend upon. Manufacturing durable products with distinct properties and attributes, Carlton offers a wide range of colours and a variety of textures, including rustic, dragwire, smooth and sandfaced.

Durable.
Versatile.
Affordable.

Products are currently manufactured in accordance with the requirements of British Standard BS EN 771-1 and in compliance with an independently verified ISO 14001 Environmental Management System. All of our products offer outstanding properties of total durability, being F2 rated and fully frost resistant.

SECTION

1b

DURABLE &

Versatile

Carlton™ BRICKS



BRETTON DRAGWIRE



BRODSWORTH MIXTURE



BROWN BRINDLE



BRODSWORTH MIXTURE
CHATSWORTH CLOSE,
SOUTH YORKSHIRE

Every aspect of your project is important to us, and our sales, despatch and technical teams strive to deliver the best possible customer service. Our dedicated staff will assist our clients with enquiries, samples, deliveries, technical support and much more. We'll be with you every step of the way.



BROWN DRAGWIRE



BROWN RUSTIC



BROWN SANDFACED



BUFF DRAGWIRE

| | Dimensional tolerance | Dimensional range | Durability against freeze/thaw | Active soluble salts content | Gross dry density | Compressive strength (minimum) | Water absorption | Thermal conductivity | Dimensions (in mm) |
|--------------------|-----------------------|-------------------|--------------------------------|------------------------------|------------------------|--------------------------------|------------------|--------------------------------------|--------------------|
| BRETTON DRAGWIRE | T2 | R1 | F2 | S2 | 1500 kg/m ³ | 40 N/mm ² | Less than 10% | 0.62 (50%) W/m.K 0.69 (90%) W/m.K | 215 x 102.5 x 65 |
| BRODSWORTH MIXTURE | T2 | R1 | F2 | S2 | 1500 kg/m ³ | 40 N/mm ² | Less than 10% | 0.62 (50%) W/m.K 0.69 (90%) W/m.K | 215 x 102.5 x 65 |
| BROWN BRINDLE | T2 | R1 | F2 | S2 | 1500 kg/m ³ | 40 N/mm ² | Less than 10% | 0.62 (50%) W/m.K 0.69 (90%) W/m.K | 215 x 102.5 x 65 |
| BROWN DRAGWIRE | T2 | R1 | F2 | S2 | 1640 kg/m ³ | 50 N/mm ² | Less than 12% | 0.72 (50%) W/m.K 0.79 (90%) W/m.K | 215 x 102.5 x 65 |
| BROWN RUSTIC | T2 | R1 | F2 | S2 | 1640 kg/m ³ | 50 N/mm ² | Less than 12% | 0.72 (50%) W/m.K 0.79 (90%) W/m.K | 215 x 102.5 x 65 |
| BROWN SANDFACED | T2 | R1 | F2 | S2 | 1500 kg/m ³ | 40 N/mm ² | Less than 10% | 0.62 (50%) W/m.K 0.69 (90%) W/m.K | 215 x 102.5 x 65 |
| BUFF DRAGWIRE | T2 | R1 | F2 | S2 | 1520 kg/m ³ | 50 N/mm ² | Less than 12% | 0.67 (50%) W/m.K 0.74 (90%) W/m.K | 215 x 102.5 x 65 |

Carlton™

BRICKS



BUFF RUSTIC



CIVIC MULTI
73 mm



CLAYBURN CIVIC
WELLINGTON ROAD, STOCKPORT

Widely used for contemporary brickwork in modern housing developments or blended seamlessly for restorations, refurbishments and conservation projects, Carlton's bricks are designed for use throughout the UK as they complement a vast array of vernacular styles.



CLAYBURN CIVIC
65 mm & 73 mm



CLAYBURN CIVIC REVERSE
65 mm & 73 mm



COTTESMORE GREY



CRIGGLESTONE BROWN

| | Dimensional tolerance | Dimensional range | Durability against freeze/thaw | Active soluble salts content | Gross dry density | Compressive strength (minimum) | Water absorption | Thermal conductivity | Dimensions (in mm) |
|-------------------------------|-----------------------|-------------------|--------------------------------|------------------------------|------------------------|--------------------------------|------------------|--------------------------------------|--------------------------------------|
| BUFF RUSTIC | T2 | R1 | F2 | S2 | 1520 kg/m ³ | 50 N/mm ² | Less than 12% | 0.67 (50%) W/m.K 0.74 (90%) W/m.K | 215 x 102.5 x 65 |
| CIVIC MULTI | T2 | R1 | F2 | S2 | 1500 kg/m ³ | 40 N/mm ² | Less than 10% | 0.62 (50%) W/m.K 0.69 (90%) W/m.K | 215 x 102.5 x 73 |
| CLAYBURN CIVIC | T2 | R1 | F2 | S2 | 1500 kg/m ³ | 40 N/mm ² | Less than 10% | 0.62 (50%) W/m.K 0.69 (90%) W/m.K | 215 x 102.5 x 65 215 x 102.5 x 73 |
| CLAYBURN CIVIC REVERSE | T2 | R1 | F2 | S2 | 1500 kg/m ³ | 40 N/mm ² | Less than 10% | 0.62 (50%) W/m.K 0.69 (90%) W/m.K | 215 x 102.5 x 65 215 x 102.5 x 73 |
| COTTESMORE GREY | T2 | R1 | F2 | S2 | 1500 kg/m ³ | 40 N/mm ² | Less than 10% | 0.62 (50%) W/m.K 0.69 (90%) W/m.K | 215 x 102.5 x 65 |
| CRIGGLESTONE BROWN | T2 | R1 | F2 | S2 | 1500 kg/m ³ | 40 N/mm ² | Less than 10% | 0.62 (50%) W/m.K 0.69 (90%) W/m.K | 215 x 102.5 x 65 |

Carlton™

BRICKS



CRIGGLESTONE RED



DALES RED



ESKDALE MULTI



FLAMBOROUGH GOLD
65 mm & 73 mm

Carlton's range includes an extensive offering of 73mm facings, matching older weathered brickwork and offering a wide variety of exciting textures and tones.

FLAMBOROUGH GOLD
M B HOUSE, SHEPCOTE LANE, SHEFFIELD



| | Dimensional tolerance | Dimensional range | Durability against freeze/thaw | Active soluble salts content | Gross dry density | Compressive strength (minimum) | Water absorption | Thermal conductivity | Dimensions (in mm) |
|------------------|-----------------------|-------------------|--------------------------------|------------------------------|------------------------|--------------------------------|------------------|--------------------------------------|--------------------------------------|
| CRIGGLESTONE RED | T2 | R1 | F2 | S2 | 1500 kg/m ³ | 40 N/mm ² | Less than 10% | 0.62 (50%) W/m.K 0.69 (90%) W/m.K | 215 x 102.5 x 65 |
| DALES RED | T2 | R1 | F2 | S2 | 1500 kg/m ³ | 40 N/mm ² | Less than 10% | 0.62 (50%) W/m.K 0.69 (90%) W/m.K | 215 x 102.5 x 65 |
| ESKDALE MULTI | T2 | R1 | F2 | S2 | 1500 kg/m ³ | 40 N/mm ² | Less than 10% | 0.62 (50%) W/m.K 0.69 (90%) W/m.K | 215 x 102.5 x 65 |
| FLAMBOROUGH GOLD | T2 | R1 | F2 | S2 | 1500 kg/m ³ | 40 N/mm ² | Less than 10% | 0.62 (50%) W/m.K 0.69 (90%) W/m.K | 215 x 102.5 x 65 215 x 102.5 x 73 |

Carlton™

BRICKS

CLAYBURN CIVIC
VICTORIA GARDENS, LEEDS

Blended in-house for a consistent, balanced, high-quality finish, we are confident of the bricks' durability, versatility and technical performance. Carlton also offers mixed loads with the flexibility to mix product sizes, colours and textures with improved availability.



GOLDTHORPE MIXTURE



HEATHER RUSTIC

65 mm & 73 mm



HEATHER SANDFACED

65 mm & 73 mm



KIRKBY RUSTIC

73 mm

| | Dimensional tolerance | Dimensional range | Durability against freeze/thaw | Active soluble salts content | Gross dry density | Compressive strength (minimum) | Water absorption | Thermal conductivity | Dimensions (in mm) |
|---------------------------|-----------------------|-------------------|--------------------------------|------------------------------|------------------------|--------------------------------|------------------|--------------------------------------|--------------------------------------|
| GOLDTHORPE MIXTURE | T2 | R1 | F2 | S2 | 1500 kg/m ³ | 40 N/mm ² | Less than 10% | 0.62 (50%) W/m.K 0.69 (90%) W/m.K | 215 x 102.5 x 65 |
| HEATHER RUSTIC | T2 | R1 | F2 | S2 | 1500 kg/m ³ | 40 N/mm ² | Less than 10% | 0.62 (50%) W/m.K 0.69 (90%) W/m.K | 215 x 102.5 x 65 215 x 102.5 x 73 |
| HEATHER SANDFACED | T2 | R1 | F2 | S2 | 1500 kg/m ³ | 40 N/mm ² | Less than 10% | 0.62 (50%) W/m.K 0.69 (90%) W/m.K | 215 x 102.5 x 65 215 x 102.5 x 73 |
| KIRKBY RUSTIC | T2 | R1 | F2 | S2 | 1500 kg/m ³ | 40 N/mm ² | Less than 10% | 0.62 (50%) W/m.K 0.69 (90%) W/m.K | 215 x 102.5 x 73 |

Carlton™

BRICKS



MAPPLEWELL LIGHT



MOORLAND RUSTIC
65 mm & 73 mm



MOORLAND SANDFACED



OLDSTOCK ANTIQUE
BARNLEY

Available from Carlton is a range of eight products known as the 'Capital Collection'. Meticulously designed to match twentieth century brickwork, the bricks complement architecture from a post-war era as well as offering designs for contemporary new builds.



OLDSTOCK ANTIQUE



PINHOLE CROFTON BUFF

73 mm



PINHOLE PRIORY

73 mm



PRIORY MIXTURE

65 mm & 73 mm

| | Dimensional tolerance | Dimensional range | Durability against freeze/thaw | Active soluble salts content | Gross dry density | Compressive strength (minimum) | Water absorption | Thermal conductivity | Dimensions (in mm) |
|----------------------|-----------------------|-------------------|--------------------------------|------------------------------|------------------------|--------------------------------|------------------|--------------------------------------|--------------------------------------|
| MAPPLEWELL LIGHT | T2 | R1 | F2 | S2 | 1500 kg/m ³ | 40 N/mm ² | Less than 10% | 0.62 (50%) W/m.K 0.69 (90%) W/m.K | 215 x 102.5 x 65 |
| MOORLAND RUSTIC | T2 | R1 | F2 | S2 | 1500 kg/m ³ | 40 N/mm ² | Less than 10% | 0.62 (50%) W/m.K 0.69 (90%) W/m.K | 215 x 102.5 x 65 215 x 102.5 x 73 |
| MOORLAND SANDFACED | T2 | R1 | F2 | S2 | 1500 kg/m ³ | 40 N/mm ² | Less than 10% | 0.62 (50%) W/m.K 0.69 (90%) W/m.K | 215 x 102.5 x 65 |
| OLDSTOCK ANTIQUE | T2 | R1 | F2 | S2 | 1500 kg/m ³ | 40 N/mm ² | Less than 10% | 0.62 (50%) W/m.K 0.69 (90%) W/m.K | 215 x 102.5 x 65 |
| PINHOLE CROFTON BUFF | T2 | R1 | F2 | S2 | 1500 kg/m ³ | 40 N/mm ² | Less than 10% | 0.62 (50%) W/m.K 0.69 (90%) W/m.K | 215 x 102.5 x 73 |
| PINHOLE PRIORY | T2 | R1 | F2 | S2 | 1500 kg/m ³ | 40 N/mm ² | Less than 10% | 0.62 (50%) W/m.K 0.69 (90%) W/m.K | 215 x 102.5 x 73 |
| PRIORY MIXTURE | T2 | R1 | F2 | S2 | 1500 kg/m ³ | 40 N/mm ² | Less than 10% | 0.62 (50%) W/m.K 0.69 (90%) W/m.K | 215 x 102.5 x 65 215 x 102.5 x 73 |

Carlton™

BRICKS



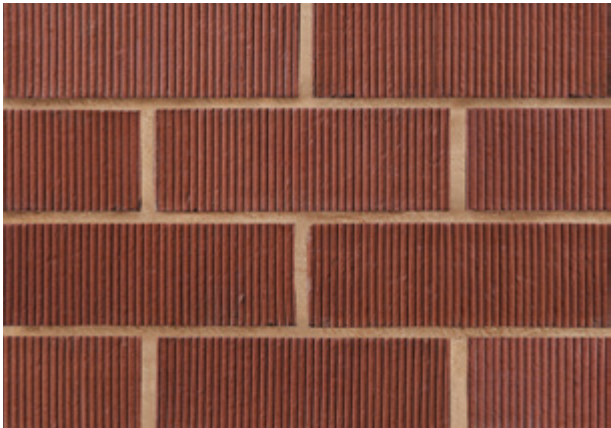
RED DRAGWIRE



RED RUSTIC



RED SANDFACED
65 mm & 73 mm



RIBBED RED
73 mm

Our versatility and durability are essential in helping you to choose the right brick, first time. As they are made of clay, the bricks are beautiful, natural products, and they possess outstanding environmental credentials.



RIDINGS GOLD ANTIQUE



RIDINGS WEATHERED BLEND



| | Dimensional tolerance | Dimensional range | Durability against freeze/thaw | Active soluble salts content | Gross dry density | Compressive strength (minimum) | Water absorption | Thermal conductivity | Dimensions (in mm) |
|-------------------------|-----------------------|-------------------|--------------------------------|------------------------------|------------------------|--------------------------------|------------------|--------------------------------------|--------------------------------------|
| RED DRAGWIRE | T2 | R1 | F2 | S2 | 1640 kg/m ³ | 50 N/mm ² | Less than 12% | 0.72 (50%) W/m.K 0.79 (90%) W/m.K | 215 x 102.5 x 65 |
| RED RUSTIC | T2 | R1 | F2 | S2 | 1640 kg/m ³ | 50 N/mm ² | Less than 12% | 0.72 (50%) W/m.K 0.79 (90%) W/m.K | 215 x 102.5 x 65 |
| RED SANDFACED | T2 | R1 | F2 | S2 | 1500 kg/m ³ | 40 N/mm ² | Less than 10% | 0.62 (50%) W/m.K 0.69 (90%) W/m.K | 215 x 102.5 x 65 215 x 102.5 x 73 |
| RIBBED RED | T2 | R1 | F2 | S2 | 1500 kg/m ³ | 40 N/mm ² | Less than 10% | 0.62 (50%) W/m.K 0.69 (90%) W/m.K | 215 x 102.5 x 73 |
| RIDINGS GOLD ANTIQUE | T2 | R1 | F2 | S2 | 1500 kg/m ³ | 40 N/mm ² | Less than 10% | 0.62 (50%) W/m.K 0.69 (90%) W/m.K | 215 x 102.5 x 65 |
| RIDINGS WEATHERED BLEND | T2 | R1 | F2 | S2 | 1500 kg/m ³ | 40 N/mm ² | Less than 10% | 0.62 (50%) W/m.K 0.69 (90%) W/m.K | 215 x 102.5 x 65 |

Carlton™

BRICKS



RIPLEY RUSTIC
65 mm & 73 mm



VICTORIAN RED
73 mm



WOLDS MINSTER BLEND
BARROWBY GARDENS, COLTON

Created with sustainability in mind under stringent management systems, brick represents a unique contribution to the circular economy of our built environment.



WEATHERED RED
73 mm



WILLERBY RED
73 mm



WOLDS AUTUMN BLEND



WOLDS MINSTER BLEND

| | Dimensional tolerance | Dimensional range | Durability against freeze/thaw | Active soluble salts content | Gross dry density | Compressive strength (minimum) | Water absorption | Thermal conductivity | Dimensions (in mm) |
|---------------------|-----------------------|-------------------|--------------------------------|------------------------------|------------------------|--------------------------------|------------------|--------------------------------------|--------------------------------------|
| RIPLEY RUSTIC | T2 | R1 | F2 | S2 | 1820 kg/m ³ | 40 N/mm ² | Less than 10% | 0.62 (50%) W/m.K 0.69 (90%) W/m.K | 215 x 102.5 x 65 215 x 102.5 x 73 |
| VICTORIAN RED | T2 | R1 | F2 | S2 | 1500 kg/m ³ | 40 N/mm ² | Less than 10% | 0.62 (50%) W/m.K 0.69 (90%) W/m.K | 215 x 102.5 x 73 |
| WEATHERED RED | T2 | R1 | F2 | S2 | 1500 kg/m ³ | 40 N/mm ² | Less than 10% | 0.62 (50%) W/m.K 0.69 (90%) W/m.K | 215 x 102.5 x 73 |
| WILLERBY RED | T2 | R1 | F2 | S2 | 1500 kg/m ³ | 40 N/mm ² | Less than 10% | 0.62 (50%) W/m.K 0.69 (90%) W/m.K | 215 x 102.5 x 73 |
| WOLDS AUTUMN BLEND | T2 | R1 | F2 | S2 | 1500 kg/m ³ | 40 N/mm ² | Less than 10% | 0.62 (50%) W/m.K 0.69 (90%) W/m.K | 215 x 102.5 x 65 |
| WOLDS MINSTER BLEND | T2 | R1 | F2 | S2 | 1500 kg/m ³ | 40 N/mm ² | Less than 10% | 0.62 (50%) W/m.K 0.69 (90%) W/m.K | 215 x 102.5 x 65 |

ASK AND
we'll create it



Charnwood™

HANDMADE BRICKS

WELCOME TO CHARNWOOD

Known as the UK's largest producer of traditionally handmade bricks and specials produced from our manufacturing base in Leicestershire. Combined with the highest durability characteristics, our renowned products are tailored to your exact specifications, handcrafted to create a premier finish.

Precision made.
Premium quality.

Products are currently manufactured in accordance with the requirements of British Standards BS EN 771-1 and BS 4729, and in compliance with independently verified ISO 9001 Quality and ISO 14001 Environmental Management Systems. Products also comply with the BES 6001 Responsible Sourcing standard. All of our products offer outstanding properties of total durability, being F2 rated and fully frost resistant.

Charnwood™

HANDMADE BRICKS



ASHBY RED



CATHEDRAL GREY



DARK VICTORIAN RED



We specialise in identifying the most beautiful, pertinent products for conservation areas, congruent extensions, prestigious new builds and inspiring architecture in order to enhance our built environment.

DARK VICTORIAN RED
BRITISH LIBRARY, LONDON



| | Dimensional tolerance | Dimensional range | Durability against freeze/thaw | Active soluble salts content | Gross dry density | Compressive strength (minimum) | Water absorption | Thermal conductivity | Dimensions (in mm) |
|--------------------|-----------------------|-------------------|--------------------------------|------------------------------|------------------------|--------------------------------|------------------|--------------------------------------|--------------------|
| ASHBY RED | T2 | R1 | F2 | S2 | 1600 kg/m ³ | 25 N/mm ² | Less than 17% | 0.43 (50%) W/m.K 0.49 (90%) W/m.K | 215 x 102.5 x 65 |
| CATHEDRAL GREY | T2 | R1 | F2 | S2 | 1600 kg/m ³ | 25 N/mm ² | Less than 17% | 0.43 (50%) W/m.K 0.49 (90%) W/m.K | 215 x 102.5 x 65 |
| DARK VICTORIAN RED | T2 | R1 | F2 | S2 | 1600 kg/m ³ | 25 N/mm ² | Less than 17% | 0.43 (50%) W/m.K 0.49 (90%) W/m.K | 215 x 102.5 x 65 |

NB. All products available in metric, imperial and bespoke sizes.

Charnwood™

HANDMADE BRICKS





HORSHAM RED MULTI
CHANNING SCHOOL, LONDON



PREMIUM
quality

Charnwood™

HANDMADE BRICKS

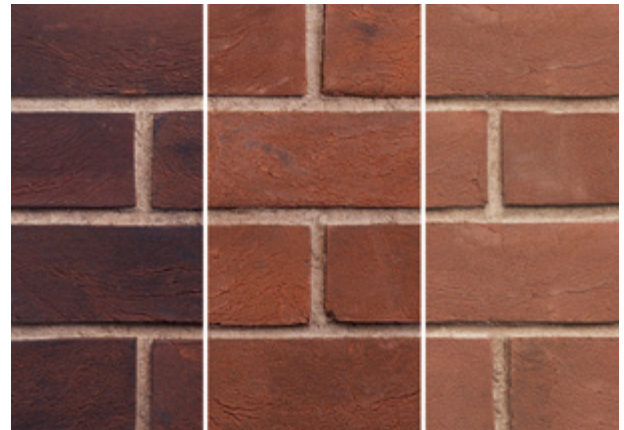


HAMPSHIRE RED
ST PANCRAS, LONDON

Charnwood offers all products in both metric, i-line and imperial sizes, in an unrivalled range of colours.



FARNHAM RED



FINE TEXTURED RENOVATION BLEND

Available in Dark, Medium or Light.



GOLDEN RUSSET



HAMPSHIRE RED

| | Dimensional tolerance | Dimensional range | Durability against freeze/thaw | Active soluble salts content | Gross dry density | Compressive strength (minimum) | Water absorption | Thermal conductivity | Dimensions (in mm) |
|--------------------------------|-----------------------|-------------------|--------------------------------|------------------------------|------------------------|--------------------------------|------------------|--------------------------------------|--------------------|
| FARNHAM RED | T2 | R1 | F2 | S2 | 1600 kg/m ³ | 25 N/mm ² | Less than 17% | 0.43 (50%) W/m.K 0.49 (90%) W/m.K | 215 x 102.5 x 65 |
| FINE TEXTURED RENOVATION BLEND | T2 | R1 | F2 | S2 | 1600 kg/m ³ | 25 N/mm ² | Less than 17% | 0.43 (50%) W/m.K 0.49 (90%) W/m.K | 215 x 102.5 x 65 |
| GOLDEN RUSSET | T2 | R1 | F2 | S2 | 1600 kg/m ³ | 25 N/mm ² | Less than 17% | 0.43 (50%) W/m.K 0.49 (90%) W/m.K | 215 x 102.5 x 65 |
| HAMPSHIRE RED | T2 | R1 | F2 | S2 | 1600 kg/m ³ | 25 N/mm ² | Less than 17% | 0.43 (50%) W/m.K 0.49 (90%) W/m.K | 215 x 102.5 x 65 |

NB. All products available in metric, imperial and bespoke sizes.

Charnwood™

HANDMADE BRICKS



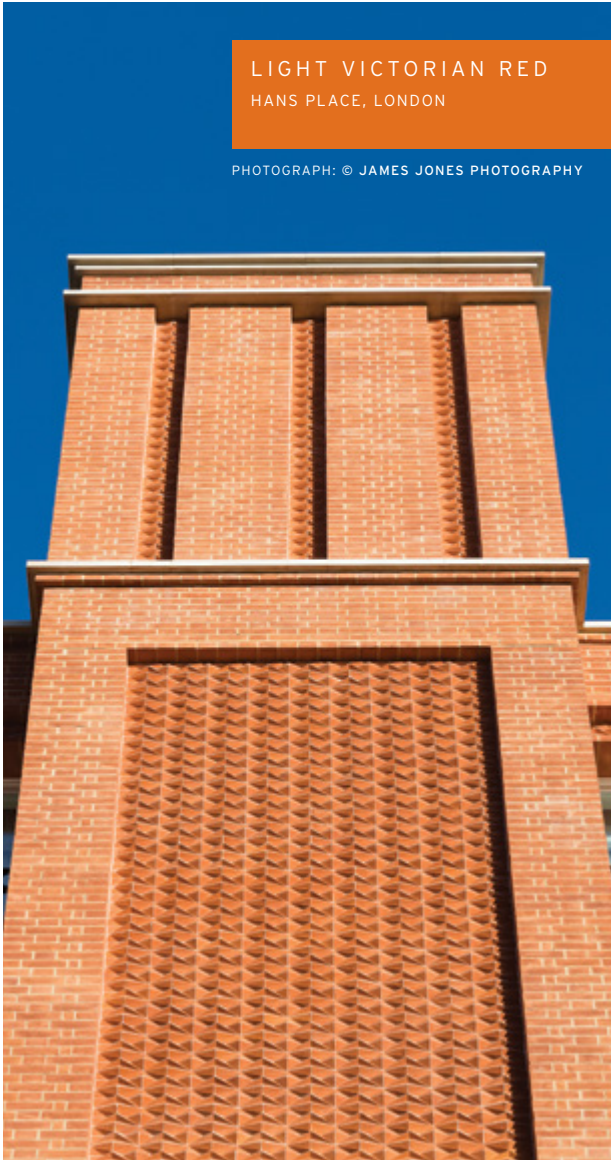
HENLEY RED



HORSHAM RED MULTI



LIGHT RUSSET



We can also develop a truly unique blend to your exact requirements. We match performance with beauty, making Charnwood the choice of Architects.



LIGHT VICTORIAN RED



MULTI BRINDLE



OXBRIDGE YELLOW MULTI



RUSSET GREY

| | Dimensional tolerance | Dimensional range | Durability against freeze/thaw | Active soluble salts content | Gross dry density | Compressive strength (minimum) | Water absorption | Thermal conductivity | Dimensions (in mm) |
|-----------------------|-----------------------|-------------------|--------------------------------|------------------------------|------------------------|--------------------------------|------------------|--------------------------------------|--------------------|
| HENLEY RED | T2 | R1 | F2 | S2 | 1600 kg/m ³ | 25 N/mm ² | Less than 17% | 0.43 (50%) W/m.K 0.49 (90%) W/m.K | 215 x 102.5 x 65 |
| HORSHAM RED MULTI | T2 | R1 | F2 | S2 | 1600 kg/m ³ | 25 N/mm ² | Less than 17% | 0.43 (50%) W/m.K 0.49 (90%) W/m.K | 215 x 102.5 x 65 |
| LIGHT RUSSET | T2 | R1 | F2 | S2 | 1600 kg/m ³ | 25 N/mm ² | Less than 17% | 0.43 (50%) W/m.K 0.49 (90%) W/m.K | 215 x 102.5 x 65 |
| LIGHT VICTORIAN RED | T2 | R1 | F2 | S2 | 1600 kg/m ³ | 25 N/mm ² | Less than 17% | 0.43 (50%) W/m.K 0.49 (90%) W/m.K | 215 x 102.5 x 65 |
| MULTI BRINDLE | T2 | R1 | F2 | S2 | 1600 kg/m ³ | 25 N/mm ² | Less than 17% | 0.43 (50%) W/m.K 0.49 (90%) W/m.K | 215 x 102.5 x 65 |
| OXBRIDGE YELLOW MULTI | T2 | R1 | F2 | S2 | 1600 kg/m ³ | 25 N/mm ² | Less than 17% | 0.43 (50%) W/m.K 0.49 (90%) W/m.K | 215 x 102.5 x 65 |
| RUSSET GREY | T2 | R1 | F2 | S2 | 1600 kg/m ³ | 25 N/mm ² | Less than 17% | 0.43 (50%) W/m.K 0.49 (90%) W/m.K | 215 x 102.5 x 65 |

NB. All products available in metric, imperial and bespoke sizes.

Charnwood™

HANDMADE BRICKS



LIMEWOOD HOUSE

CHARNWOOD MULTI BRINDLE BRICKS WITH
HAMPSHIRE RED DETAIL

PRECISION MADE

SECTION 1c

premium quality



MAYFIELD ROAD

CHARNWOOD THULSTON WINNINGTON BLEND WITH
STEEL GREY HEADERS AND HAMPSHIRE RED DETAIL

Charnwood™

HANDMADE BRICKS



STAMFORD BUFF



STEEL GREY



SUSSEX RED MULTI



STEEL GREY
SHAWFORD PARK, WINCHESTER

Charnwood manufactures a full range of standard Special Shaped Bricks to BS 4729 and makes purpose made specials, brick features and arches to match all of our brick range.



THULSTON WINNINGTON BLEND



UNIVERSITY BUFF



WHITWICK MULTI BUFF



WINDSOR RED MULTI

| | Dimensional tolerance | Dimensional range | Durability against freeze/thaw | Active soluble salts content | Gross dry density | Compressive strength (minimum) | Water absorption | Thermal conductivity | Dimensions (in mm) |
|---------------------------|-----------------------|-------------------|--------------------------------|------------------------------|------------------------|--------------------------------|------------------|--------------------------------------|--------------------|
| STAMFORD BUFF | T2 | R1 | F2 | S2 | 1600 kg/m ³ | 25 N/mm ² | Less than 17% | 0.43 (50%) W/m.K 0.49 (90%) W/m.K | 215 x 102.5 x 65 |
| STEEL GREY | T2 | R1 | F2 | S2 | 1600 kg/m ³ | 25 N/mm ² | Less than 17% | 0.43 (50%) W/m.K 0.49 (90%) W/m.K | 215 x 102.5 x 65 |
| SUSSEX RED MULTI | T2 | R1 | F2 | S2 | 1600 kg/m ³ | 25 N/mm ² | Less than 17% | 0.43 (50%) W/m.K 0.49 (90%) W/m.K | 215 x 102.5 x 65 |
| THULSTON WINNINGTON BLEND | T2 | R1 | F2 | S2 | 1600 kg/m ³ | 25 N/mm ² | Less than 17% | 0.43 (50%) W/m.K 0.49 (90%) W/m.K | 215 x 102.5 x 65 |
| UNIVERSITY BUFF | T2 | R1 | F2 | S2 | 1600 kg/m ³ | 25 N/mm ² | Less than 17% | 0.43 (50%) W/m.K 0.49 (90%) W/m.K | 215 x 102.5 x 65 |
| WHITWICK MULTI BUFF | T2 | R1 | F2 | S2 | 1600 kg/m ³ | 25 N/mm ² | Less than 17% | 0.43 (50%) W/m.K 0.49 (90%) W/m.K | 215 x 102.5 x 65 |
| WINDSOR RED MULTI | T2 | R1 | F2 | S2 | 1600 kg/m ³ | 25 N/mm ² | Less than 17% | 0.43 (50%) W/m.K 0.49 (90%) W/m.K | 215 x 102.5 x 65 |

SELECTED DARK
CERES, CAMBRIDGESHIRE

PHOTOGRAPH: © POLLARD THOMAS EDWARDS / HILL

SUPERIOR
tradition



Freshfield Lane™

BRICKS

WELCOME TO FRESHFIELD LANE

Freshfield Lane produces a varied selection of clamp-fired stock facing bricks in a range of appealing colours, either with machine made or a handmade variety of rich textural finishes. Combining the latest technology with traditional manufacturing techniques, Freshfield Lane produces a full range of special shaped bricks and clay pavers to complement your project.

Beautiful.
Natural.
Desirable.

Products are currently manufactured in accordance with the requirements of British Standards BS EN 771-1 and BS 4729, and in compliance with independently verified ISO 9001 Quality and ISO 14001 Environmental Management Systems. Products also comply with the BES 6001 Responsible Sourcing standard. All of our products offer outstanding properties of total durability, being F2 rated and fully frost resistant.

Freshfield Lane™

BRICKS



ANTHRACITE



DANEHILL YELLOW



FIRST QUALITY MULTI



At our manufacturing base in Danehill, Sussex we have a dedicated team producing the most natural products, sympathetic to the local built environment, making the perfect finish for quality buildings. Our bricks have a timelessly authentic, warm 'earthy' feel, enabling them to sit in harmony with varied architectural styles.



DANEHILL YELLOW & SELECTED DARK
KIDBROOKE VILLAGE, LONDON

| | Dimensional tolerance | Dimensional range | Durability against freeze/thaw | Active soluble salts content | Gross dry density | Compressive strength (minimum) | Water absorption | Thermal conductivity | Dimensions (in mm) |
|---------------------|-----------------------|-------------------|--------------------------------|------------------------------|------------------------|--------------------------------|------------------|----------------------------------|--------------------------------------|
| ANTHRACITE | T2 | R1 | F2 | S2 | 1460 kg/m ³ | 27 N/mm ² | Less than 12% | 0.45 W/m.K-50% 0.51 W/m.K-90% | 215 x 102.5 x 65 |
| DANEHILL YELLOW | T2 | R1 | F2 | S2 | 1460 kg/m ³ | 27 N/mm ² | Less than 12% | 0.45 W/m.K-50% 0.51 W/m.K-90% | 215 x 102.5 x 65 |
| FIRST QUALITY MULTI | T2 | R1 | F2 | S2 | 1460 kg/m ³ | 27 N/mm ² | Less than 12% | 0.45 W/m.K-50% 0.51 W/m.K-90% | 215 x 102.5 x 65 215 x 102.5 x 50 |

Freshfield Lane™

BRICKS



UNIQUE
colours

FIRST QUALITY MULTI
ELEPHANT & CASTLE, LONDON





Freshfield Lane™

BRICKS



HANDMADE



LINDFIELD YELLOW MULTI



RURAL MULTI



FIRST QUALITY, SELECTED
DARK, DANEHILL YELLOW
AND ANTHRACITE
ELEPHANT & CASTLE, LONDON

The timelessly authentic feel results in products that are high in demand with architects, self-builders and premium housebuilders. Clamp fired stock bricks have always been a long lasting, sustainable building material, and you can rely on our bricks to stay beautiful long into the future.



SELECTED DARK



SELECTED LIGHT



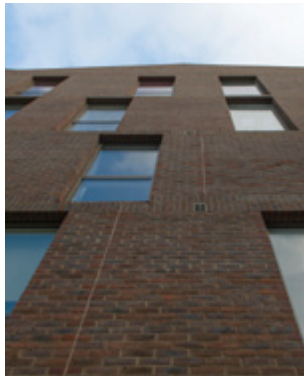
| | Dimensional tolerance | Dimensional range | Durability against freeze/thaw | Active soluble salts content | Gross dry density | Compressive strength (minimum) | Water absorption | Thermal conductivity | Dimensions (in mm) |
|------------------------|-----------------------|-------------------|--------------------------------|------------------------------|------------------------|--------------------------------|------------------|----------------------------------|------------------------------------|
| HANDMADE | T2 | R1 | F2 | S2 | 1460 kg/m ³ | 27 N/mm ² | Less than 12% | 0.45 W/m.K-50% 0.51 W/m.K-90% | 215 x 102.5 x 65 230 x 110 x 70 |
| LINDFIELD YELLOW MULTI | T2 | R1 | F2 | S2 | 1460 kg/m ³ | 27 N/mm ² | Less than 12% | 0.45 W/m.K-50% 0.51 W/m.K-90% | 215 x 102.5 x 65 |
| RURAL MULTI | T1 | R1 | F2 | S2 | 1460 kg/m ³ | 20 N/mm ² | Less than 15% | 0.45 W/m.K-50% 0.51 W/m.K-90% | 215 x 102.5 x 65 |
| SELECTED DARK | T2 | R1 | F2 | S2 | 1460 kg/m ³ | 27 N/mm ² | Less than 12% | 0.45 W/m.K-50% 0.51 W/m.K-90% | 215 x 102.5 x 65 |
| SELECTED LIGHT | T2 | R1 | F2 | S2 | 1460 kg/m ³ | 27 N/mm ² | Less than 12% | 0.45 W/m.K-50% 0.51 W/m.K-90% | 215 x 102.5 x 65 |

Freshfield Lane™

BRICKS

SELECTED DARK
BRENTFORD LOCK WEST, LONDON







Michelmersh™ BRICKS

WELCOME TO MICHELMERSH

Michelmersh offers the highest quality stock bricks in a unique range of colours, manufacturing a traditional stock brick of real character. Producing facing bricks and special shaped bricks from our manufacturing base at Michelmersh near Romsey, we pride ourselves on personal service, which is reflected in our flexible approach and represented in a multitude of award winning projects.

An impressive range.
Highest quality.
Designed to perform.

Products are currently manufactured in accordance with the requirements of British Standards BS EN 771-1 and BS 4729, and in compliance with independently verified ISO 9001 Quality and ISO 14001 Environmental Management Systems. Products also comply with the BES 6001 Responsible Sourcing standard. All of our products offer outstanding properties of total durability, being F2 rated and fully frost resistant.



SECTION

1e



LEADING

the way

Michelmersh™

BRICKS



HAMPSHIRE STOCK COBHAM BLEND



HAMPSHIRE STOCK DARK MULTI



HAMPSHIRE STOCK DOWNS BLEND



We offer extensive experience working on projects within conservation areas. A bespoke blend is often created from a combination of our popular brick ranges to meet specific design objectives.



| | Dimensional tolerance | Dimensional range | Durability against freeze/thaw | Active soluble salts content | Gross dry density | Compressive strength (minimum) | Water absorption | Thermal conductivity | Dimensions (in mm) |
|------------------------------|-----------------------|-------------------|--------------------------------|------------------------------|------------------------|--------------------------------|------------------|--------------------------------------|--------------------|
| HAMPSHIRE STOCK COBHAM BLEND | T1 | R1 | F2 | S2 | 1400 kg/m ³ | 6 N/mm ² | Less than 18% | 0.41 (50%) W/m.K 0.47 (90%) W/m.K | 215 x 102.5 x 65 |
| HAMPSHIRE STOCK DARK MULTI | T1 | R1 | F2 | S2 | 1400 kg/m ³ | 6 N/mm ² | Less than 18% | 0.41 (50%) W/m.K 0.47 (90%) W/m.K | 215 x 102.5 x 65 |
| HAMPSHIRE STOCK DOWNS BLEND | T1 | R1 | F2 | S2 | 1400 kg/m ³ | 6 N/mm ² | Less than 18% | 0.41 (50%) W/m.K 0.47 (90%) W/m.K | 215 x 102.5 x 65 |

Michelmersh™

BRICKS

HAMPSHIRE STOCK DOWNS BLEND
ABINGDON SCHOOL, OXFORDSHIRE





SECTION 1e



HAMPSHIRE STOCK RED MULTI ATR
BRYDENS, HERTFORDSHIRE

Michelmersh™

BRICKS



PRODUCTS
bybrand

Whether you are an architect looking to match a natural looking brick for your conservation project, a developer of prestigious homes who demands the best quality products to give instant kerb appeal, or a self-builder who knows you deserve something really special to make your house a home - Michelmersh has the perfect product for you.



HAMPSHIRE STOCK LIGHT MULTI



HAMPSHIRE STOCK RED MULTI ATR



| | Dimensional tolerance | Dimensional range | Durability against freeze/thaw | Active soluble salts content | Gross dry density | Compressive strength (minimum) | Water absorption | Thermal conductivity | Dimensions (in mm) |
|-------------------------------|-----------------------|-------------------|--------------------------------|------------------------------|------------------------|--------------------------------|------------------|--------------------------------------|--------------------|
| HAMPSHIRE STOCK LIGHT MULTI | T1 | R1 | F2 | S2 | 1400 kg/m ³ | 6 N/mm ² | Less than 18% | 0.41 (50%) W/m.K 0.47 (90%) W/m.K | 215 x 102.5 x 65 |
| HAMPSHIRE STOCK RED MULTI ATR | T1 | R1 | F2 | S2 | 1400 kg/m ³ | 6 N/mm ² | Less than 18% | 0.41 (50%) W/m.K 0.47 (90%) W/m.K | 215 x 102.5 x 65 |

DEFINE
new builds



SECTION

1f



i-line™ BRICKS

WELCOME TO i-line

A reflection of specifiers' and architects' demands for a British product to fulfil the vision of modern, striking, contemporary design. Handmade to offer an elongated elegance, i-line products can define new builds, harmonise with older brickwork to bring a modern vision to renovations and be as individual as every building deserves.

**Slimline, handmade bricks.
Bring your project to life!**

Products are currently manufactured in accordance with the requirements of British Standard BS EN 771-1, and in compliance with independently verified ISO 9001 Quality and ISO 14001 Environmental Management Systems. Products also comply with the BES 6001 Responsible Sourcing standard. All of our products offer outstanding properties of total durability, being F2 rated and fully frost resistant.

i-line™ BRICKS



i-line BF01



i-line BF02



i-line BF03



Available in a palette of natural base colours, but with the unique ability to offer an infinite blend of bespoke combinations, the range consists of core dimensions in a collection of smooth and textured finishes.



i-line BF04



i-line BF05



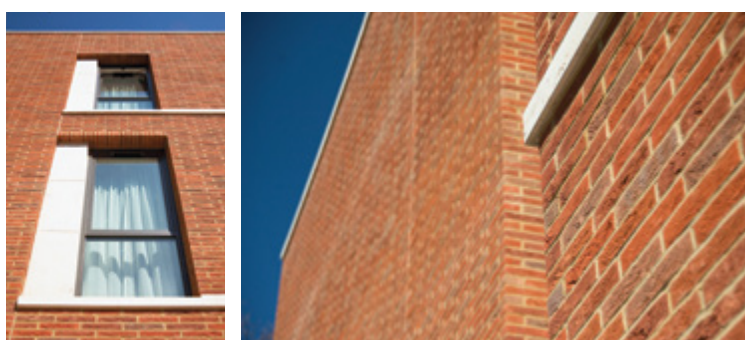
| | Dimensional tolerance: | Dimensional range: | Durability against freeze/thaw: | Active soluble salts content: | Gross dry density: | Normalised Compressive Strength: | Water absorption: | Thermal conductivity: |
|-------------|------------------------|--------------------|---------------------------------|-------------------------------|------------------------|----------------------------------|-------------------|--------------------------------------|
| i-line BF01 | T2 | R1 | F2 | S2 | 1650 kg/m ³ | 18.6 N/mm ² | Less than 17% | 0.43 (50%) W/m.K 0.49 (90%) W/m.K |
| i-line BF02 | T2 | R1 | F2 | S2 | 1650 kg/m ³ | 18.6 N/mm ² | Less than 17% | 0.43 (50%) W/m.K 0.49 (90%) W/m.K |
| i-line BF03 | T2 | R1 | F2 | S2 | 1650 kg/m ³ | 18.6 N/mm ² | Less than 17% | 0.43 (50%) W/m.K 0.49 (90%) W/m.K |
| i-line BF04 | T2 | R1 | F2 | S2 | 1650 kg/m ³ | 18.6 N/mm ² | Less than 17% | 0.43 (50%) W/m.K 0.49 (90%) W/m.K |
| i-line BF05 | T2 | R1 | F2 | S2 | 1650 kg/m ³ | 18.6 N/mm ² | Less than 17% | 0.43 (50%) W/m.K 0.49 (90%) W/m.K |

As i-line products are intended to be usable in combinations of length and bond patterns, Compressive Strength is quoted as a Normalised Value as defined in BS EN 772-1. i.e. Equivalent to a 100 mm wide x 100 mm high unit.

i-line™ BRICKS

i-line BF02

RONALD MCDONALD HOUSE, LONDON



SLIMLINE
handmade





i-line™ BRICKS



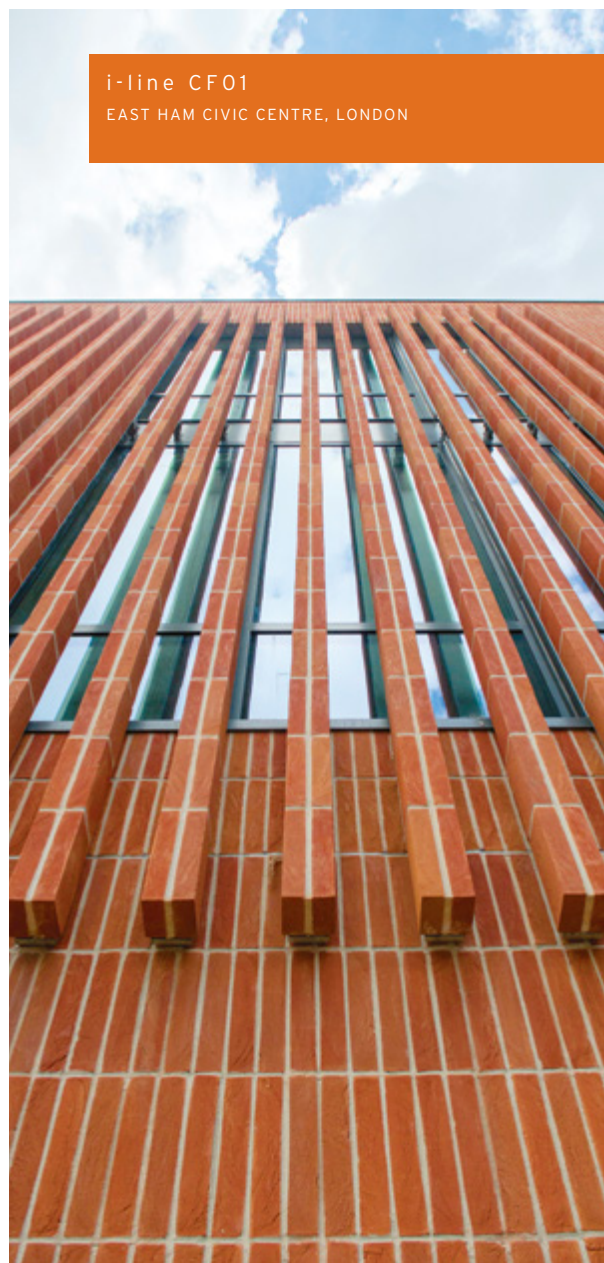
i-line CF01



i-line CF05



i-line CF08



Slimline, handmade bricks to fulfil a vision of striking contemporary design. The possibilities are endless.

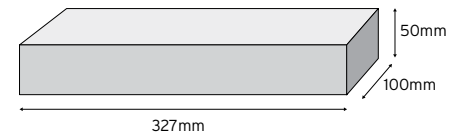
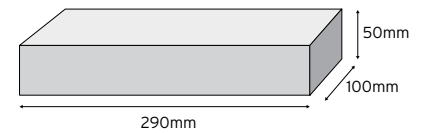
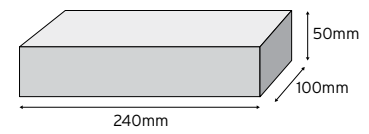
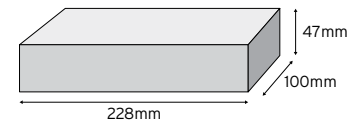


i-line CF13



i-line CF14

SIZE GUIDE:



| | Dimensional tolerance: | Dimensional range: | Durability against freeze/thaw: | Active soluble salts content: | Gross dry density: | Normalised Compressive Strength: | Water absorption: | Thermal conductivity: |
|-------------|------------------------|--------------------|---------------------------------|-------------------------------|------------------------|----------------------------------|-------------------|--------------------------------------|
| i-line CF01 | T2 | R1 | F2 | S2 | 1650 kg/m ³ | 18.6 N/mm ² | Less than 17% | 0.43 (50%) W/m.K 0.49 (90%) W/m.K |
| i-line CF05 | T2 | R1 | F2 | S2 | 1650 kg/m ³ | 18.6 N/mm ² | Less than 17% | 0.43 (50%) W/m.K 0.49 (90%) W/m.K |
| i-line CF08 | T2 | R1 | F2 | S2 | 1650 kg/m ³ | 18.6 N/mm ² | Less than 17% | 0.43 (50%) W/m.K 0.49 (90%) W/m.K |
| i-line CF13 | T2 | R1 | F2 | S2 | 1650 kg/m ³ | 18.6 N/mm ² | Less than 17% | 0.43 (50%) W/m.K 0.49 (90%) W/m.K |
| i-line CF14 | T2 | R1 | F2 | S2 | 1650 kg/m ³ | 18.6 N/mm ² | Less than 17% | 0.43 (50%) W/m.K 0.49 (90%) W/m.K |

As i-line products are intended to be usable in combinations of length and bond patterns Compressive Strength is quoted as a Normalised Value as defined in EN 772-1. i.e. Equivalent to a 100 mm wide x 100 mm high unit.



Synthesis™

BRICKS

WELCOME TO SYNTHESIS

Using our unique ability to manufacture pre-blended bricks in wirecuts, stocks or handmades, we have launched a diverse range of contemporary products. Our Synthesis range brings together unique individual bricks, and transforms them into eye-catching collections, giving an appealing mosaic appearance.

Contemporary mosaic blends.

Products are currently manufactured in accordance with the requirements of British Standard BS EN 771-1, and in compliance with independently verified ISO 9001 Quality and ISO 14001 Environmental Management Systems. Products also comply with the BES 6001 Responsible Sourcing standard. All of our products offer outstanding properties of total durability, being F2 rated and fully frost resistant.



SECTION 1g

UNIQUE & individual

Synthesis™

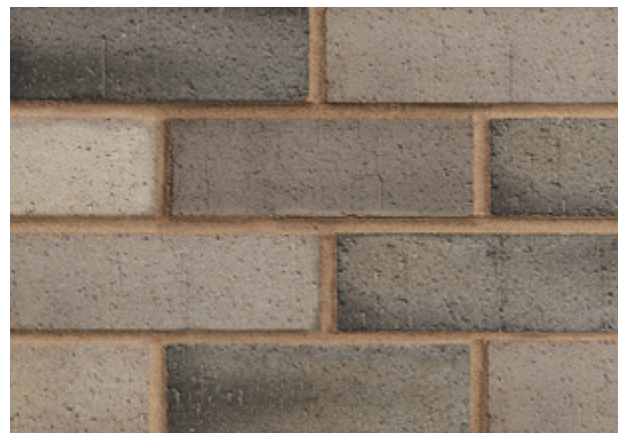
BRICKS



SYNTHESIS S01



SYNTHESIS S03



SYNTHESIS S09

Although the combinations are limitless, we have developed a range and mix of colours that complement each other, from stark contrasts to sympathetic palettes.



SYNTHESIS S11



SYNTHESIS S14



SYNTHESIS S14 & S17
ITV STUDIOS, MEDIA CITY, MANCHESTER

| | Dimensional tolerance: | Dimensional range: | Durability against freeze/thaw: | Active soluble salts content: | Gross dry density: | Compressive strength (minimum) | Water absorption: | Thermal conductivity: | Dimensions: (in mm) |
|---------------|------------------------|--------------------|---------------------------------|-------------------------------|------------------------|--------------------------------|-------------------|--------------------------------------|---------------------|
| SYNTHESIS S01 | T2 | R1 | F2 | S2 | 1640 kg/m ³ | 50 N/mm ² | Less than 12% | 0.72 (50%) W/m.K 0.79 (90%) W/m.K | 215 x 102.5 x 65 |
| SYNTHESIS S03 | T2 | R1 | F2 | S2 | 1640 kg/m ³ | 50 N/mm ² | Less than 12% | 0.72 (50%) W/m.K 0.79 (90%) W/m.K | 215 x 102.5 x 65 |
| SYNTHESIS S09 | T2 | R1 | F2 | S2 | 1640 kg/m ³ | 50 N/mm ² | Less than 12% | 0.72 (50%) W/m.K 0.79 (90%) W/m.K | 215 x 102.5 x 65 |
| SYNTHESIS S11 | T2 | R1 | F2 | S2 | 1640 kg/m ³ | 50 N/mm ² | Less than 12% | 0.72 (50%) W/m.K 0.79 (90%) W/m.K | 215 x 102.5 x 65 |
| SYNTHESIS S14 | T2 | R1 | F2 | S2 | 1640 kg/m ³ | 50 N/mm ² | Less than 12% | 0.72 (50%) W/m.K 0.79 (90%) W/m.K | 215 x 102.5 x 65 |

Synthesis™

BRICKS

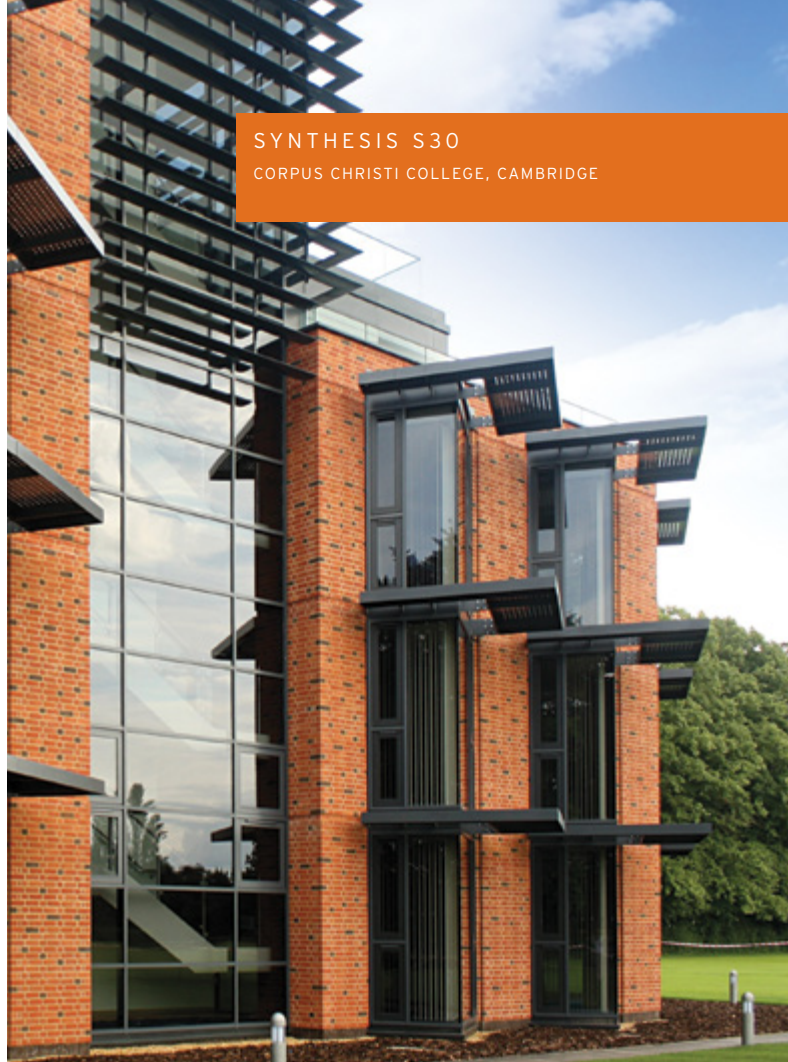


SYNTHESIS S15



SYNTHESIS S17

PRODUCTS
bybrand

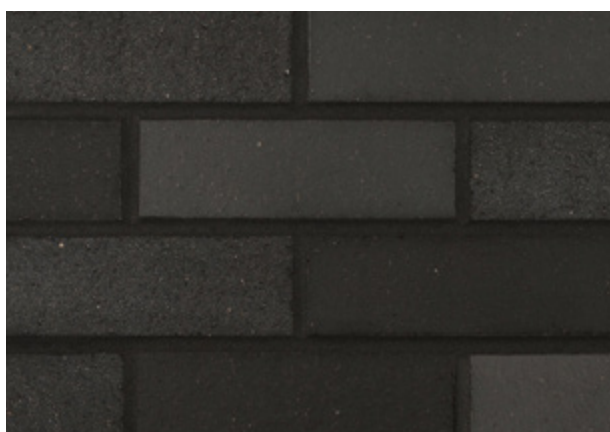


SYNTHESIS S30
CORPUS CHRISTI COLLEGE, CAMBRIDGE



SYNTHESIS S14 & S17
ITV STUDIOS, MEDIA CITY, MANCHESTER

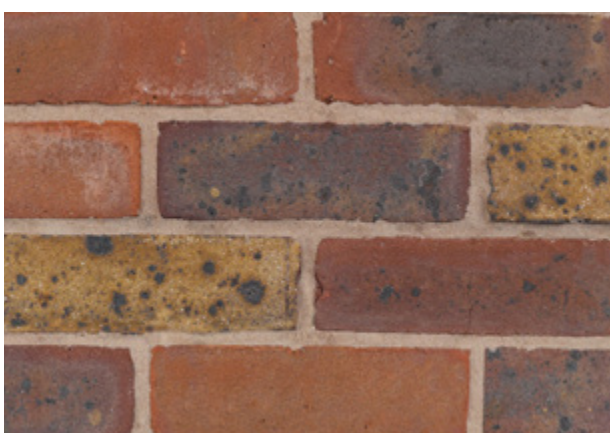
The diversity of Synthesis allows you to ensure your building is unique and will enhance the built environment for generations to come.



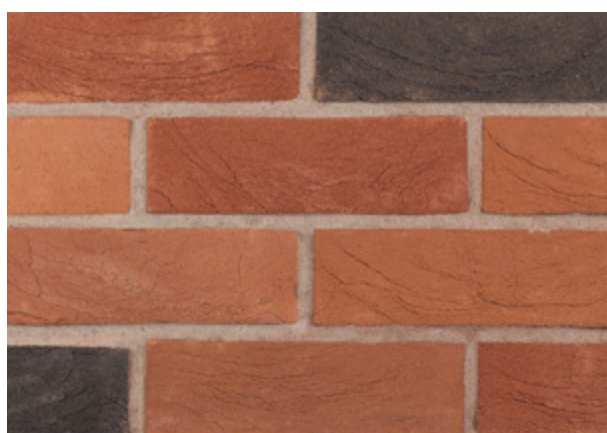
SYNTHESIS S19



SYNTHESIS S20



SYNTHESIS S21



SYNTHESIS S30

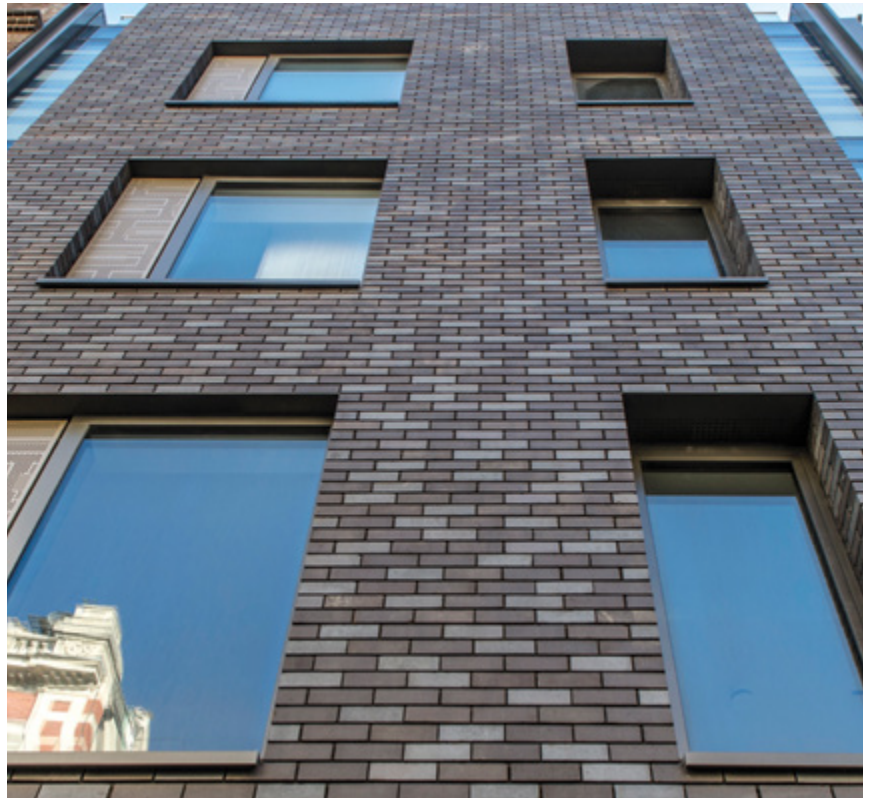
| | Dimensional tolerance: | Dimensional range: | Durability against freeze/thaw: | Active soluble salts content: | Gross dry density: | Compressive strength (minimum) | Water absorption: | Thermal conductivity: | Dimensions: (in mm) |
|---------------|------------------------|--------------------|---------------------------------|-------------------------------|------------------------|--------------------------------|-------------------|--------------------------------------|---------------------|
| SYNTHESIS S15 | T2 | R1 | F2 | S2 | 1520 kg/m ³ | 50 N/mm ² | Less than 12% | 0.69 (50%) W/m.K 0.76 (90%) W/m.K | 215 x 102.5 x 65 |
| SYNTHESIS S17 | T2 | R1 | F2 | S2 | 1640 kg/m ³ | 50 N/mm ² | Less than 12% | 0.72 (50%) W/m.K 0.79 (90%) W/m.K | 215 x 102.5 x 65 |
| SYNTHESIS S19 | T2 | R1 | F2 | S2 | 1640 kg/m ³ | 50 N/mm ² | Less than 12% | 0.72 (50%) W/m.K 0.79 (90%) W/m.K | 215 x 102.5 x 65 |
| SYNTHESIS S20 | T2 | R1 | F2 | S2 | 1460 kg/m ³ | 27 N/mm ² | Less than 12% | 0.45 (50%) W/m.K 0.51 (90%) W/m.K | 215 x 102.5 x 65 |
| SYNTHESIS S21 | T2 | R1 | F2 | S2 | 1460 kg/m ³ | 27 N/mm ² | Less than 12% | 0.45 (50%) W/m.K 0.51 (90%) W/m.K | 215 x 102.5 x 65 |
| SYNTHESIS S30 | T2 | R1 | F2 | S2 | 1600 kg/m ³ | 25 N/mm ² | Less than 17% | 0.43 (50%) W/m.K 0.49 (90%) W/m.K | 215 x 102.5 x 65 |



Synthesis™

BRICKS

SYNTHESIS S14
GOODGE STREET, LONDON



MOSAIC
blends

SQUARE EDGE PAVER

DURABLE
& timeless

Pavers



WELCOME TO PAVERS

We design our machine made pavers to be as individual as you are. Each paver is beautiful, durable and timeless; with the natural character our customers know and love. They come with a wide range of accessories too, so your paving always looks flawless.

**Strength, durability and through-colour.
Imparting character and style.**

Products are currently manufactured in accordance with the requirements of British Standard BS EN 1344, and in compliance with independently verified ISO 9001 Quality and ISO 14001 Environmental Management Systems. Products also comply with the BES 6001 Responsible Sourcing standard. All of our products offer outstanding properties of total durability, being FPI00 rated and fully frost resistant.

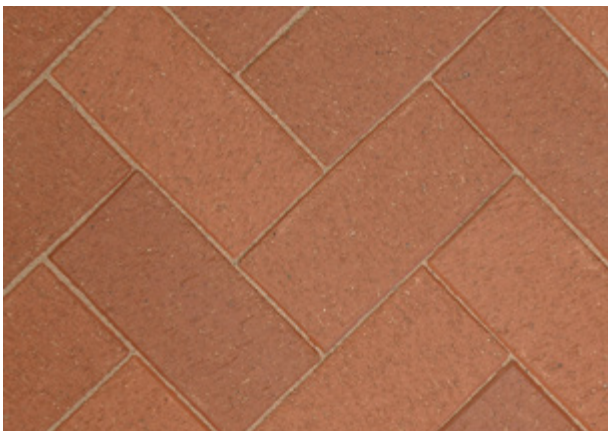
Pavers



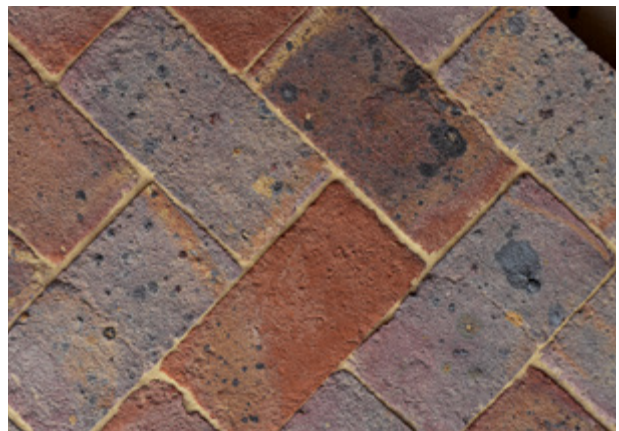
65 MM CHARCOAL CHAMFERED PAVERS*



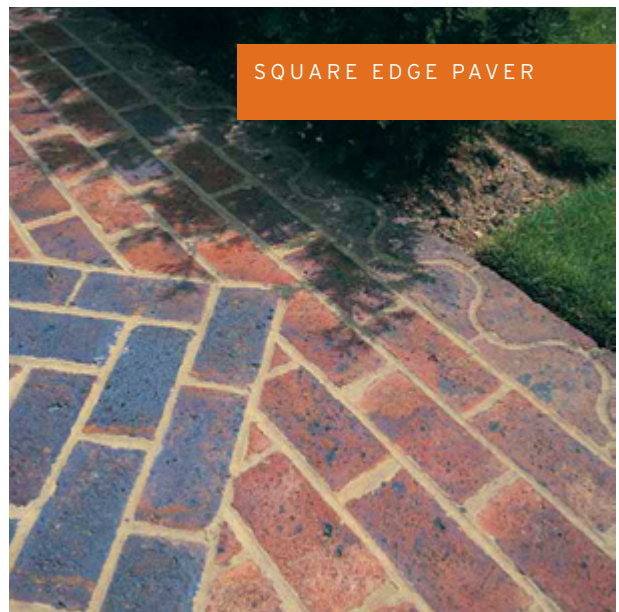
65 MM HADLEY BRINDLE CHAMFERED PAVERS*



65 MM HADLEY RED CHAMFERED PAVERS*



65 MM SQUARE EDGE PAVERS



SQUARE EDGE PAVER

Unlike concrete, our clay pavers won't fade as they exhibit permanent 'through body' colours. They weather naturally and match our bricks beautifully. They're simple to maintain and resistant to staining by oils and petroleum spillages.



65 MM HADLEY RED
CHAMFERED PAVERS

| | Transverse Breaking Load: | Slip - Skid Resistance: | Freeze Thaw Resistance: | Dimensions* | Pavers per m ² |
|--|---------------------------|-------------------------|-------------------------|--------------------|---------------------------|
| 65 MM CHARCOAL CHAMFERED PAVERS* | T4 | U3 | FP100 (Frost Resistant) | 207 x 102 x 65 mm* | 45 |
| 65 MM HADLEY BRINDLE CHAMFERED PAVERS* | T4 | U3 | FP100 (Frost Resistant) | 207 x 102 x 65 mm* | 45 |
| 65 MM HADLEY RED CHAMFERED PAVERS* | T4 | U3 | FP100 (Frost Resistant) | 207 x 102 x 65 mm* | 45 |
| 65 MM SQUARE EDGE PAVERS | T2 | U3 | FP100 (Frost Resistant) | 200 x 100 x 65 mm | 50 |

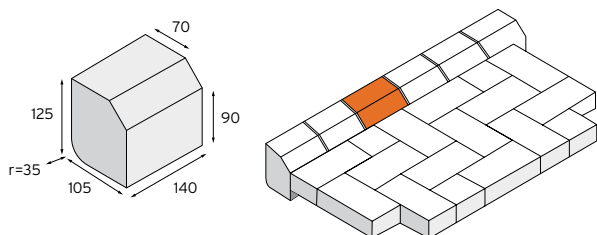
Technical properties are reported in accordance with BS EN 1344.

*Nibbed chamfered pavers have 3 mm nibs, which are not included in the BS EN 1344 work dimensions definition.

Paver Accessories

Paver accessories are only available at Blockleys.

COUNTRY KERB



COUNTRY KERB (WITH 35 MM RADIUS)

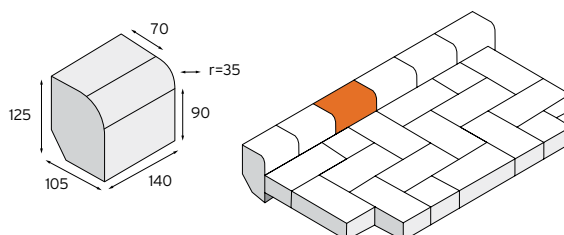
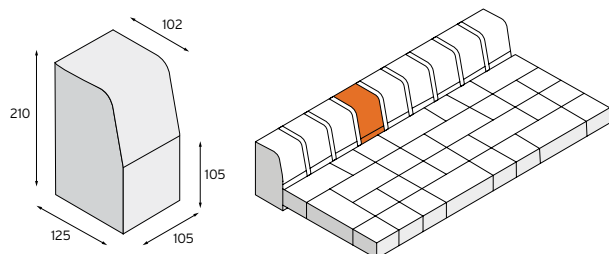
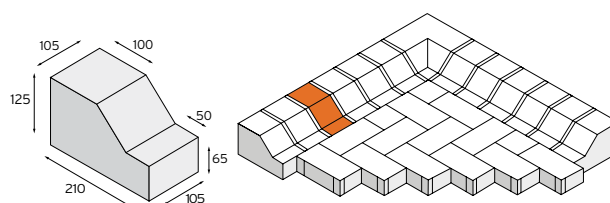


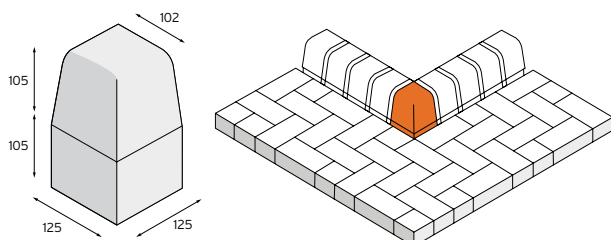
FIGURE 7 KERB



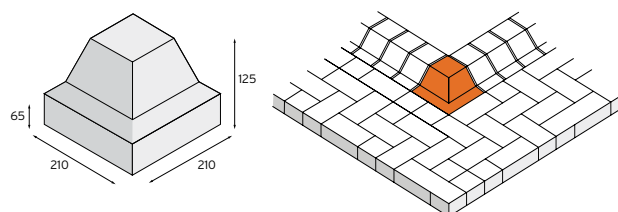
BUCKFAST KERB



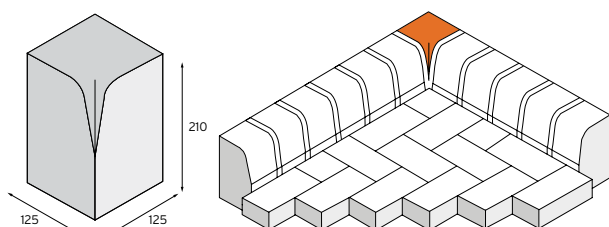
90° EXTERNAL RETURN



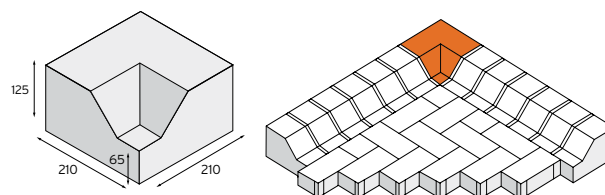
BUCKFAST 90° EXTERNAL RETURN



90° INTERNAL RETURN

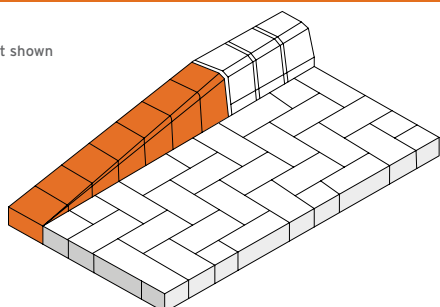


BUCKFAST 90° INTERNAL RETURN

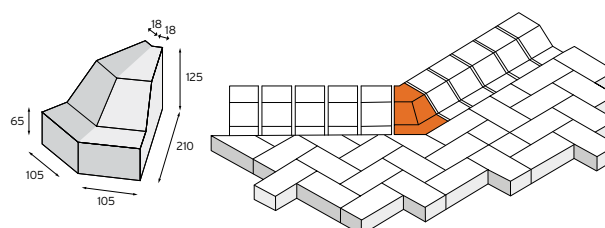


DROP KERB

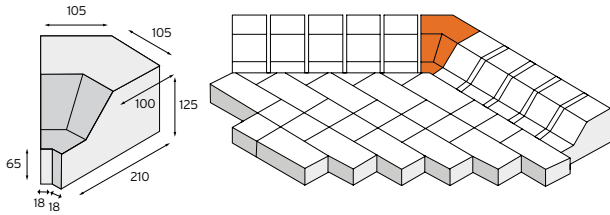
Set of 7 units
Right hand set shown



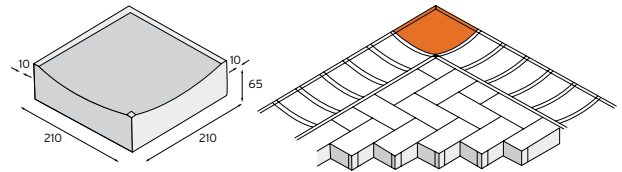
BUCKFAST 45° EXTERNAL RETURN



BUCKFAST 45° INTERNAL RETURN

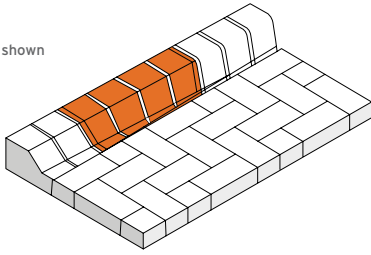


CHANNEL 90° RETURN UNIT

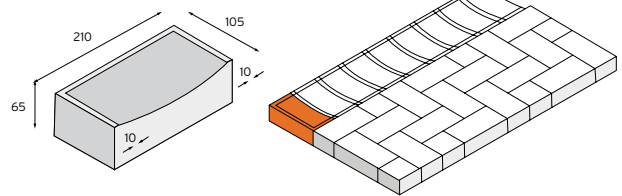


BUCKFAST KERB (LOW) TO STANDARD KERB

Set of 4 units
Right hand set shown

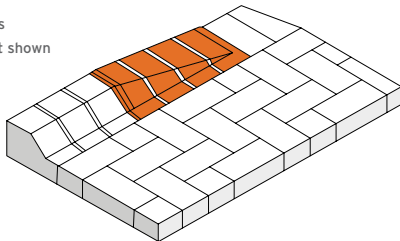


CHANNEL STOP END UNIT

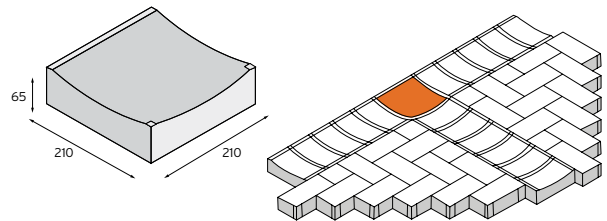


BUCKFAST (LOW) DROP KERB

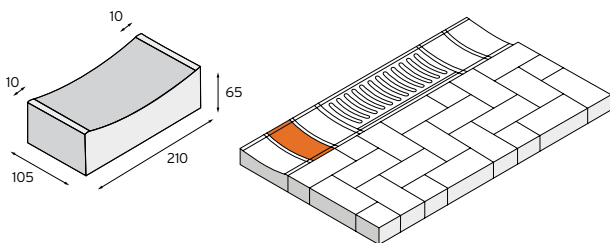
Set of 4 units
Left hand set shown



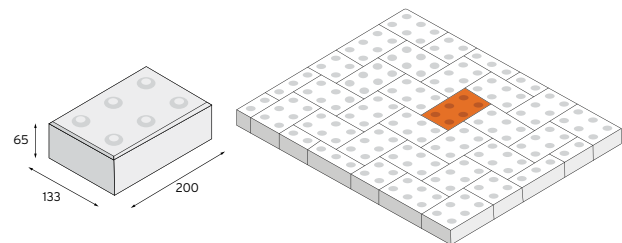
CHANNEL 'T' JUNCTION UNIT



CHANNEL UNIT including Chancast Gulligrid (by other)



TACTILE PAVER



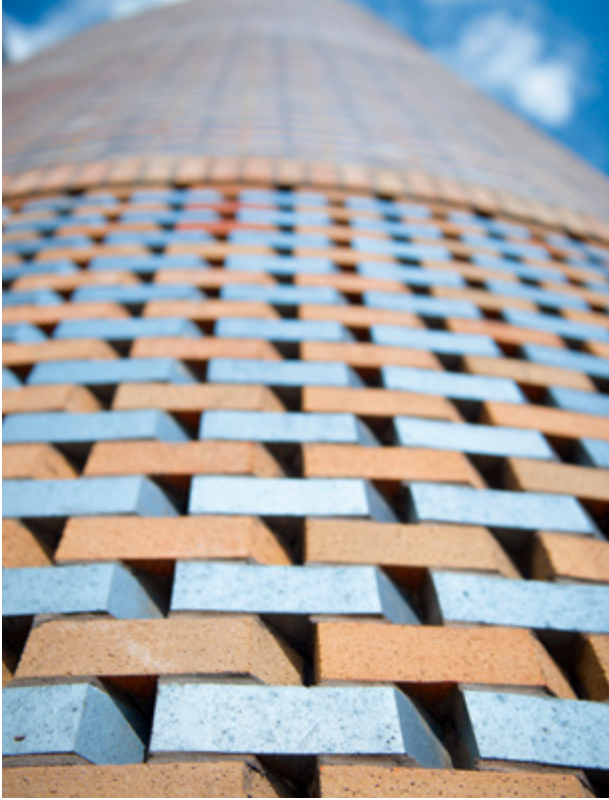
SPECIFIERS'
GUIDE TO

BS Specials



The purpose of this guide is to provide you with a practical specification tool. Within the following pages, you will find reference to the wide range of Michelmersh Specials that are available. We hope that you will find this guide as useful in your everyday work as it was designed to be. We look forward to speaking to you personally, should you require any further information.

All measurements indicated in the following illustrations use millimetre units (mm).



SECTION 2

| | |
|-----------------------|----|
| Bonding Bricks | 90 |
| Copings and Cappings | 91 |
| Bullnose Bricks | 91 |
| Angle and Cant Bricks | 94 |
| Plinth Bricks | 96 |
| Arch Bricks | 98 |
| Radial Bricks | 98 |
| Brick Slips | 99 |
| Soldier Bricks | 99 |
| Cuboid Bricks | 99 |

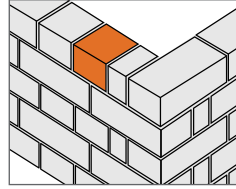
We endeavour to hold the entire range of BS 4729 Specials in stock at all times. Non-standard Specials can be made quickly to meet your individual requirements.

BONDING BRICKS

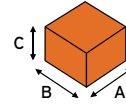
BD.1.1

Half bat (snap header)

| Type No. | A | B | C |
|----------|-----|-----|----|
| BD.1.1 | 102 | 102 | 65 |



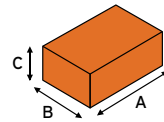
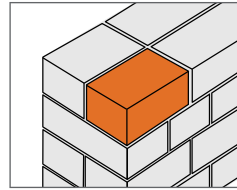
RH shown above



BD.1.2

Three-quarter bat

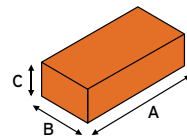
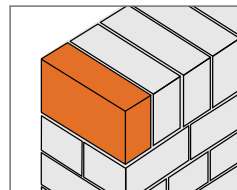
| Type No. | A | B | C |
|----------|-----|-----|----|
| BD.1.2 | 159 | 102 | 65 |



BD.1.3

Cuboid brick faced on bed surface

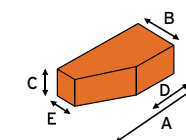
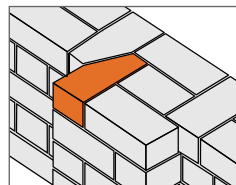
| Type No. | A | B | C |
|----------|-----|-----|----|
| BD.1.3 | 215 | 102 | 65 |



BD.2

King closer (left or right hand)

| Type No. | A | B | C | D | E |
|----------|-----|-----|----|-----|----|
| BD.2 | 215 | 102 | 65 | 102 | 46 |

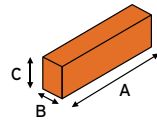
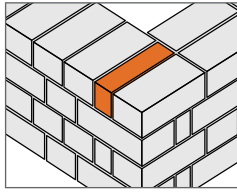


LH shown

BD.3

Queen closer

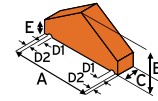
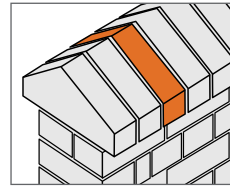
| Type No. | A | B | C |
|----------|-----|----|----|
| BD.3 | 215 | 46 | 65 |



CP.2.1

Saddleback coping

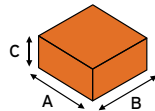
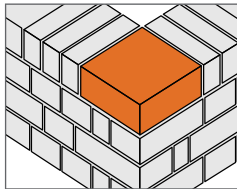
| Type No. | A | B | C | D1 | D2 | E |
|----------|-----|-----|----|----|----|----|
| CP.2.1 | 305 | 153 | 65 | 13 | 15 | 50 |



BD.4

215 mm stop end

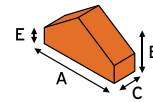
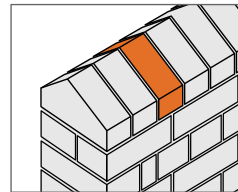
| Type No. | A | B | C |
|----------|-----|-----|-----|
| BD.4.1 | 215 | 159 | 102 |
| BD.4.2 | 215 | 159 | 65 |
| BD.4.3 | 215 | 215 | 102 |
| BD.4.4 | 215 | 215 | 65 |



CP.2.2

Saddleback capping

| Type No. | A | B | C | E |
|----------|-----|-----|----|----|
| CP.2.2 | 215 | 123 | 65 | 50 |

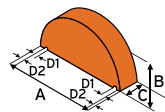
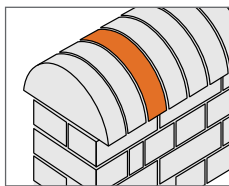


COPINGS AND CAPPINGS

CP.1.1

Half round coping

| Type No. | A | B | C | D1 | D2 |
|----------|-----|-----|----|----|----|
| CP.1.1 | 305 | 153 | 65 | 13 | 15 |

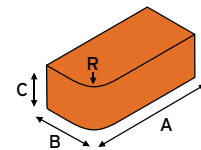
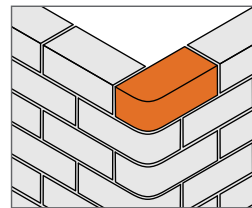


BULLNOSE BRICKS

BN.1

Single bullnose (left or right hand)

| Type No. | A | B | C | R |
|----------|-----|-----|----|----|
| BN.1.1 | 215 | 102 | 65 | 25 |
| BN.1.2 | 215 | 102 | 65 | 51 |

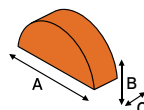
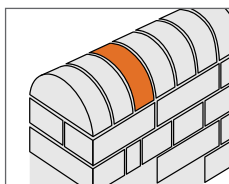


LH shown

CP.1.2

Half round capping

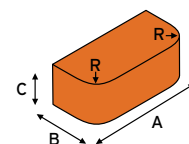
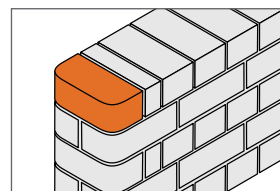
| Type No. | A | B | C |
|----------|-----|-----|----|
| CP.1.2 | 215 | 108 | 65 |



BN.2

Double bullnose

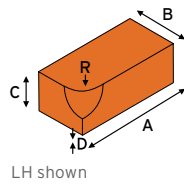
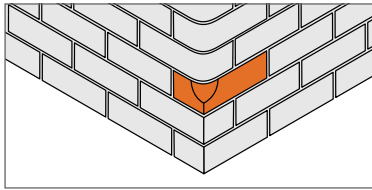
| Type No. | A | B | C | R |
|----------|-----|-----|----|----|
| BN.2.1 | 215 | 102 | 65 | 25 |
| BN.2.2 | 215 | 102 | 65 | 51 |



BN.3

Single bullnose stop (left or right hand)

| Type No. | A | B | C | D | R |
|----------|-----|-----|----|----|----|
| BN.3.1 | 215 | 102 | 65 | 25 | 25 |
| BN.3.2 | 215 | 102 | 65 | 25 | 51 |

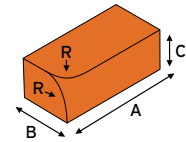
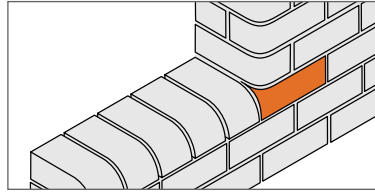


LH shown

BN.7

Single bullnose internal return stretcher faced (left or right hand)

| Type No. | A | B | C | R |
|----------|-----|-----|-----|----|
| BN.7.1 | 215 | 102 | 65 | 25 |
| BN.7.2 | 215 | 102 | 65 | 51 |
| BN.7.3 | 215 | 102 | 215 | 25 |
| BN.7.4 | 215 | 102 | 215 | 51 |

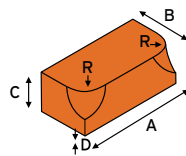
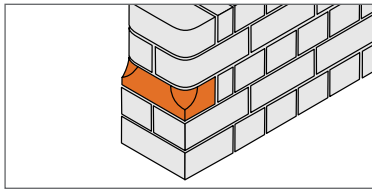


LH shown

BN.4

Double bullnose stop

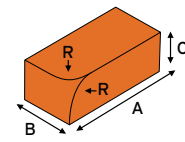
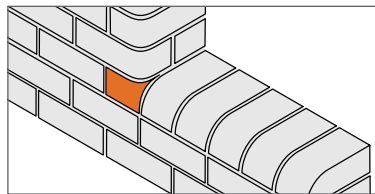
| Type No. | A | B | C | D | R |
|----------|-----|-----|----|----|----|
| BN.4.1 | 215 | 102 | 65 | 25 | 25 |
| BN.4.2 | 215 | 102 | 65 | 25 | 51 |



BN.8

Single bullnose internal return header faced (left or right hand)

| Type No. | A | B | C | R |
|----------|-----|-----|-----|----|
| BN.8.1 | 215 | 102 | 65 | 25 |
| BN.8.2 | 215 | 102 | 65 | 51 |
| BN.8.3 | 215 | 102 | 102 | 25 |
| BN.8.4 | 215 | 102 | 102 | 51 |

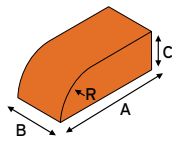
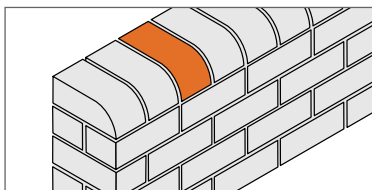


LH shown

BN.5

Single bullnose header on flat

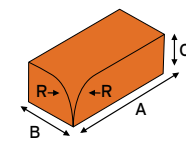
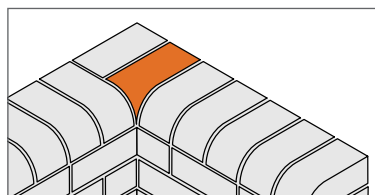
| Type No. | A | B | C | R |
|----------|-----|-----|----|----|
| BN.5.1 | 215 | 102 | 65 | 25 |
| BN.5.2 | 215 | 102 | 65 | 51 |



BN.9

Bullnose internal return flat faced (left or right hand)

| Type No. | A | B | C | R |
|----------|-----|-----|----|----|
| BN.9.1 | 215 | 102 | 65 | 25 |
| BN.9.2 | 215 | 102 | 65 | 51 |

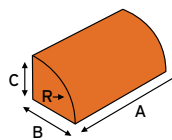
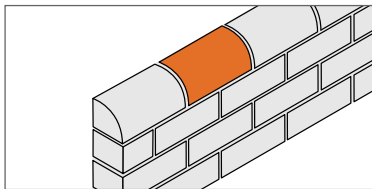


LH shown

BN.6

Single bullnose stretcher on flat

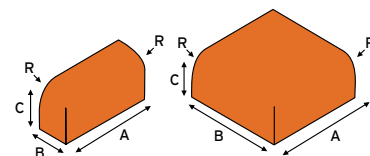
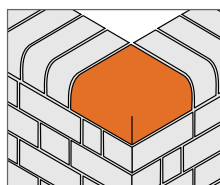
| Type No. | A | B | C | R |
|----------|-----|-----|----|----|
| BN.6.1 | 215 | 102 | 65 | 25 |
| BN.6.2 | 215 | 102 | 65 | 51 |



BN.10

Bullnose external return on edge (left or right hand)

| Type No. | A | B | C | R |
|----------|-----|-----|-----|----|
| BN.10.1 | 215 | 65 | 102 | 25 |
| BN.10.2 | 215 | 65 | 102 | 51 |
| BN.10.3 | 215 | 215 | 102 | 25 |
| BN.10.4 | 215 | 215 | 102 | 51 |

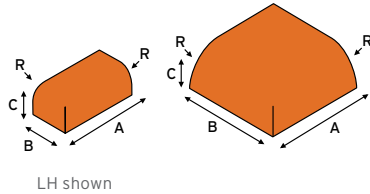
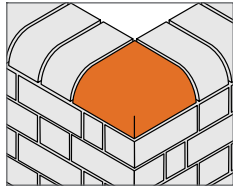


LH shown

B N.11

Bullnose external return on flat (left or right hand)

| Type No. | A | B | C | R |
|----------|-----|-----|----|----|
| BN.11.1 | 215 | 102 | 65 | 25 |
| BN.11.2 | 215 | 102 | 65 | 51 |
| BN.11.3 | 215 | 215 | 65 | 25 |
| BN.11.4 | 215 | 215 | 65 | 51 |

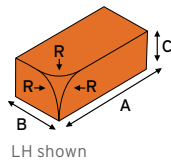
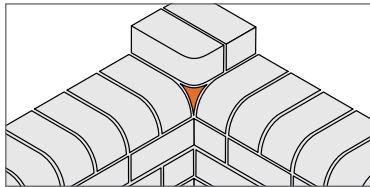


LH shown

B N.12

Bullnose mitre (left or right hand)

| Type No. | A | B | C | R |
|----------|-----|-----|----|----|
| BN.12.1 | 215 | 102 | 65 | 25 |
| BN.12.2 | 215 | 102 | 65 | 51 |

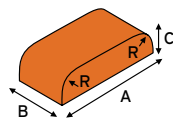
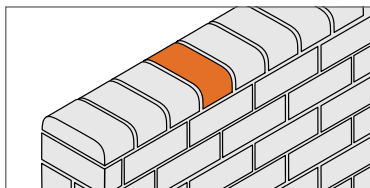


LH shown

B N.13

Bullnose double header on flat

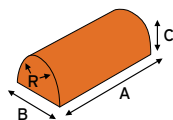
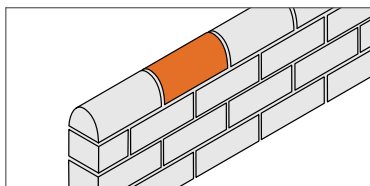
| Type No. | A | B | C | R |
|----------|-----|-----|----|----|
| BN.13.1 | 215 | 102 | 65 | 25 |
| BN.13.2 | 215 | 102 | 65 | 51 |



B N.14

Bullnose double stretcher on flat

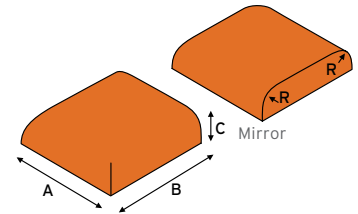
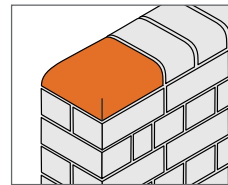
| Type No. | A | B | C | R |
|----------|-----|-----|----|----|
| BN.14.1 | 215 | 102 | 65 | 25 |
| BN.14.2 | 215 | 102 | 65 | 51 |



B N.15

Stop end to double bullnose on edge and to bullnose double header on flat (square corners on bed)

| Type No. | A | B | C | R |
|----------|-----|-----|-----|----|
| BN.15.1 | 215 | 159 | 102 | 25 |
| BN.15.2 | 215 | 159 | 102 | 51 |
| BN.15.3 | 215 | 215 | 102 | 25 |
| BN.15.4 | 215 | 215 | 102 | 51 |
| BN.15.5 | 215 | 159 | 65 | 25 |
| BN.15.6 | 215 | 159 | 65 | 51 |
| BN.15.7 | 215 | 215 | 65 | 25 |
| BN.15.8 | 215 | 215 | 65 | 51 |

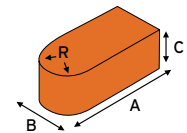
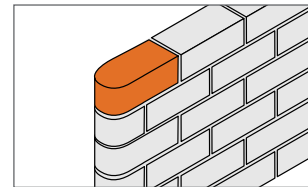


Mirror

B N.16

Cownose

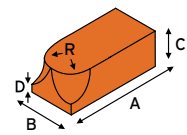
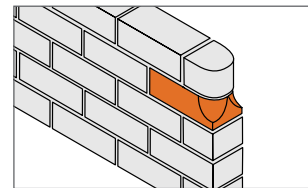
| Type No. | A | B | C | R |
|----------|-----|-----|----|----|
| BN.16.1 | 215 | 102 | 65 | 25 |
| BN.16.2 | 215 | 102 | 65 | 51 |



B N.17

Cownose stop

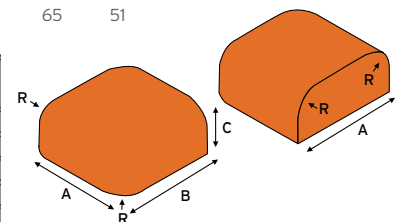
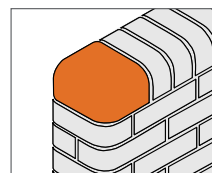
| Type No. | A | B | C | D | R |
|----------|-----|-----|----|----|----|
| BN.17.1 | 215 | 102 | 65 | 25 | 25 |
| BN.17.2 | 215 | 102 | 65 | 25 | 51 |



B N.18

Stop end to double bullnose on edge and to bullnose double header on flat (rounded corners on bed)

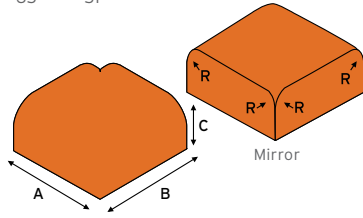
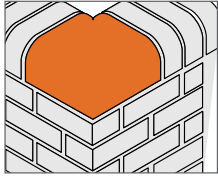
| Type No. | A | B | C | R |
|----------|-----|-----|-----|----|
| BN.18.1 | 215 | 159 | 102 | 25 |
| BN.18.2 | 215 | 159 | 102 | 51 |
| BN.18.3 | 215 | 215 | 102 | 25 |
| BN.18.4 | 215 | 215 | 102 | 51 |
| BN.18.5 | 215 | 159 | 65 | 25 |
| BN.18.6 | 215 | 159 | 65 | 51 |
| BN.18.7 | 215 | 215 | 65 | 25 |
| BN.18.8 | 215 | 215 | 65 | 51 |



BN.19

External return to double bullnose on edge and to bullnose double header on flat (square corners on bed)

| Type No. | A | B | C | R |
|----------|-----|-----|-----|----|
| BN.19.1 | 215 | 215 | 102 | 25 |
| BN.19.2 | 215 | 215 | 102 | 51 |
| BN.19.3 | 215 | 215 | 65 | 25 |
| BN.19.4 | 215 | 215 | 65 | 51 |

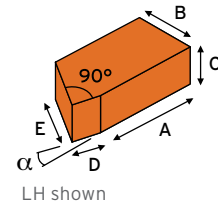
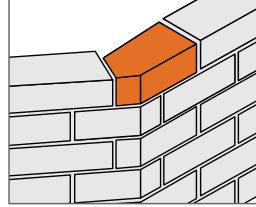


ANGLE AND CANT BRICKS

AN.1

Squint (left or right hand)

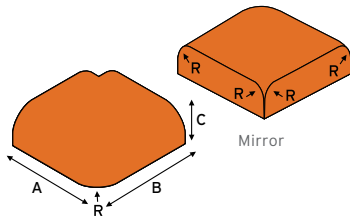
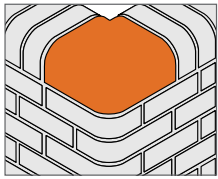
| Type No. | A | B | C | D | E | α |
|----------|-----|-----|----|----|-----|----------|
| AN.1.1 | 164 | 102 | 65 | 51 | 89 | 30° |
| AN.1.2 | 164 | 102 | 65 | 51 | 94 | 45° |
| AN.1.3 | 164 | 102 | 65 | 51 | 117 | 60° |



BN.20

External return to double bullnose on edge and to bullnose double header on flat (rounded corners on bed)

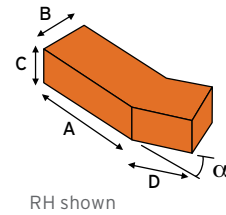
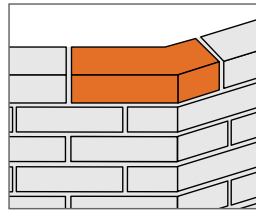
| Type No. | A | B | C | R |
|----------|-----|-----|-----|----|
| BN.20.1 | 215 | 215 | 102 | 25 |
| BN.20.2 | 215 | 215 | 102 | 51 |
| BN.20.3 | 215 | 215 | 65 | 25 |
| BN.20.4 | 215 | 215 | 65 | 51 |



AN.2

External angle (left or right hand)

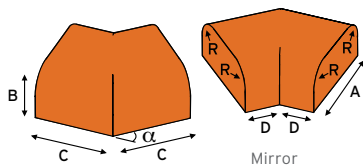
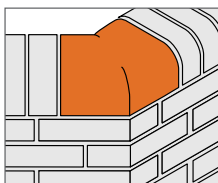
| Type No. | A | B | C | D | α |
|----------|-----|-----|----|-----|----------|
| AN.2.1 | 159 | 102 | 65 | 102 | 30° |
| AN.2.2 | 159 | 102 | 65 | 102 | 45° |
| AN.2.3 | 159 | 102 | 65 | 102 | 60° |
| AN.2.4 | 215 | 102 | 65 | 102 | 30° |
| AN.2.5 | 215 | 102 | 65 | 102 | 45° |
| AN.2.6 | 215 | 102 | 65 | 102 | 60° |



BN.21

Double bullnose external angle to double bullnose on edge and to bullnose double header on flat

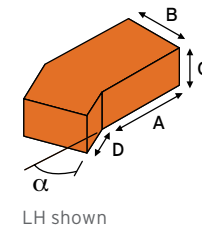
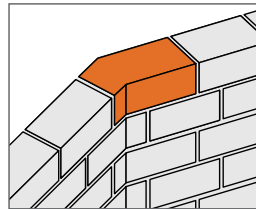
| Type No. | A | B | C | D | R | α |
|----------|-----|-----|-----|-----|----|----------|
| BN.21.1 | 215 | 102 | 159 | 101 | 25 | 30° |
| BN.21.2 | 215 | 102 | 159 | 101 | 51 | 30° |
| BN.21.3 | 215 | 65 | 159 | 101 | 25 | 30° |
| BN.21.4 | 215 | 65 | 159 | 101 | 51 | 30° |
| BN.21.5 | 215 | 102 | 159 | 70 | 25 | 45° |
| BN.21.6 | 215 | 102 | 159 | 70 | 51 | 45° |
| BN.21.7 | 215 | 65 | 159 | 70 | 25 | 45° |
| BN.21.8 | 215 | 65 | 159 | 70 | 51 | 45° |
| BN.21.9 | 215 | 102 | 159 | 35 | 25 | 60° |
| BN.21.10 | 215 | 102 | 159 | 35 | 51 | 60° |
| BN.21.11 | 215 | 65 | 159 | 35 | 25 | 60° |
| BN.21.12 | 215 | 65 | 159 | 35 | 51 | 60° |



AN.3

Internal angle (dog leg) (left or right hand)

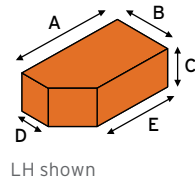
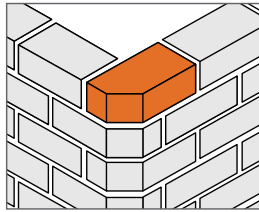
| Type No. | A | B | C | D | α |
|----------|-----|-----|----|-----|----------|
| AN.3.1 | 164 | 102 | 65 | 51 | 30° |
| AN.3.2 | 164 | 102 | 65 | 51 | 45° |
| AN.3.3 | 164 | 102 | 65 | 51 | 60° |
| AN.3.4 | 159 | 102 | 65 | 102 | 30° |
| AN.3.5 | 159 | 102 | 65 | 102 | 45° |
| AN.3.6 | 159 | 102 | 65 | 102 | 60° |
| AN.3.7 | 215 | 102 | 65 | 102 | 30° |
| AN.3.8 | 215 | 102 | 65 | 102 | 45° |
| AN.3.9 | 215 | 102 | 65 | 102 | 60° |



A N. 5

Single cant (left or right hand)

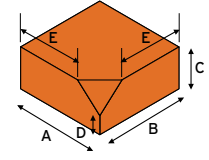
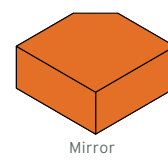
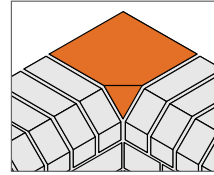
| Type No. | A | B | C | D | E |
|----------|-----|-----|----|----|-----|
| AN.5.1 | 215 | 102 | 65 | 46 | 159 |
| AN.5.2 | 215 | 102 | 65 | 60 | 173 |



A N. 9

Single cant internal return with internal slope (square external corner on bed)

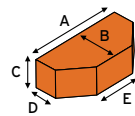
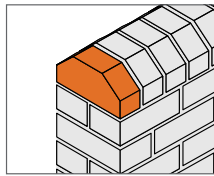
| Type No. | A | B | C | D | E |
|----------|-----|-----|-----|----|-----|
| AN.9.1 | 215 | 215 | 102 | 46 | 159 |
| AN.9.2 | 215 | 215 | 102 | 60 | 173 |



A N. 6

Double cant

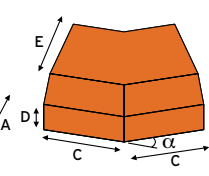
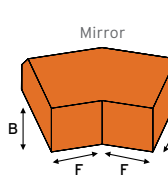
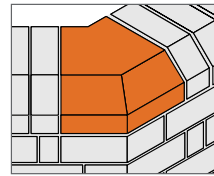
| Type No. | A | B | C | D | E |
|----------|-----|-----|----|----|-----|
| AN.6.1 | 215 | 102 | 65 | 46 | 103 |
| AN.6.2 | 215 | 102 | 65 | 60 | 131 |



A N. 10

Single cant external angle

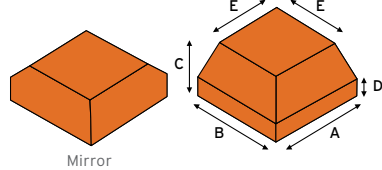
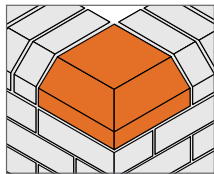
| Type No. | A | B | C | D | E | F | α |
|----------|-----|-----|-----|----|-----|-----|----------|
| AN.10.1 | 215 | 102 | 159 | 46 | 159 | 101 | 30° |
| AN.10.2 | 215 | 102 | 159 | 60 | 173 | 101 | 30° |
| AN.10.3 | 215 | 102 | 159 | 46 | 159 | 70 | 45° |
| AN.10.4 | 215 | 102 | 159 | 60 | 173 | 70 | 45° |
| AN.10.5 | 215 | 102 | 159 | 46 | 159 | 35 | 60° |
| AN.10.6 | 215 | 102 | 159 | 60 | 173 | 35 | 60° |



A N. 7

Single cant external return

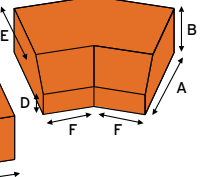
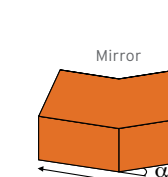
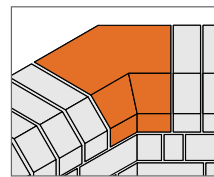
| Type No. | A | B | C | D | E |
|----------|-----|-----|-----|----|-----|
| AN.7.1 | 215 | 215 | 102 | 46 | 159 |
| AN.7.2 | 215 | 215 | 102 | 60 | 173 |



A N. 11

Single cant internal angle

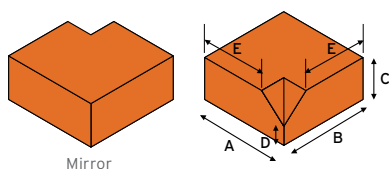
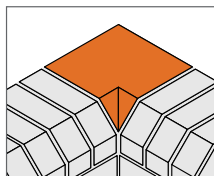
| Type No. | A | B | C | D | E | F | α |
|----------|-----|-----|-----|----|-----|-----|----------|
| AN.11.1 | 215 | 102 | 159 | 46 | 159 | 101 | 30° |
| AN.11.2 | 215 | 102 | 159 | 60 | 173 | 101 | 30° |
| AN.11.3 | 215 | 102 | 159 | 46 | 159 | 70 | 45° |
| AN.11.4 | 215 | 102 | 159 | 60 | 173 | 70 | 45° |
| AN.11.5 | 215 | 102 | 159 | 46 | 159 | 35 | 60° |
| AN.11.6 | 215 | 102 | 159 | 60 | 173 | 35 | 60° |



A N. 8

Single cant internal return with internal mitre (square external corner on bed)

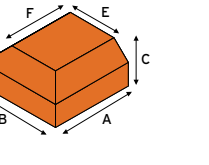
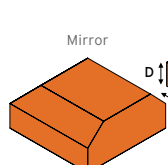
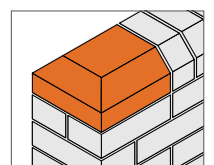
| Type No. | A | B | C | D | E |
|----------|-----|-----|-----|----|-----|
| AN.8.1 | 215 | 215 | 102 | 46 | 159 |
| AN.8.2 | 215 | 215 | 102 | 60 | 173 |



A N. 12

Double cant stop end (square corners on bed)

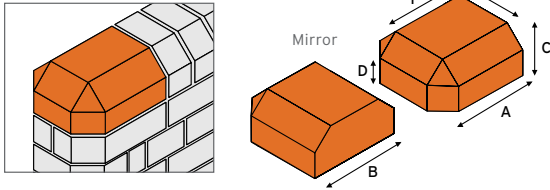
| Type No. | A | B | C | D | E | F |
|----------|-----|-----|-----|----|-----|-----|
| AN.12.1 | 215 | 215 | 102 | 46 | 103 | 159 |
| AN.12.2 | 215 | 215 | 102 | 60 | 131 | 173 |



AN.13

Double cant stop end (canted corners on bed)

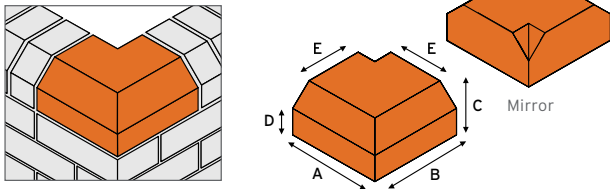
| Type No. | A | B | C | D | E | F |
|----------|-----|-----|-----|----|-----|-----|
| AN.13.1 | 215 | 215 | 102 | 46 | 103 | 159 |
| AN.13.2 | 215 | 215 | 102 | 60 | 131 | 173 |



AN.14

Double cant external return with internal mitre (square corners on bed)

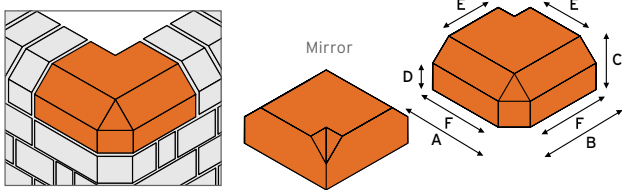
| Type No. | A | B | C | D | E |
|----------|-----|-----|-----|----|-----|
| AN.14.1 | 215 | 215 | 102 | 46 | 103 |
| AN.14.2 | 215 | 215 | 102 | 60 | 131 |



AN.15

Double cant external return with internal mitre (canted corners on bed)

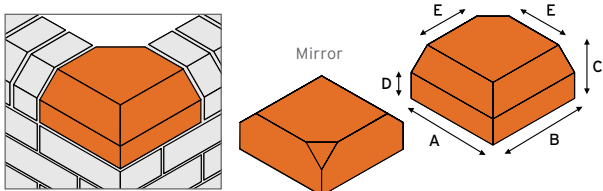
| Type No. | A | B | C | D | E | F |
|----------|-----|-----|-----|----|-----|-----|
| AN.15.1 | 215 | 215 | 102 | 46 | 103 | 159 |
| AN.15.2 | 215 | 215 | 102 | 60 | 131 | 173 |



AN.16

Double cant external return with internal slope (square corners on bed)

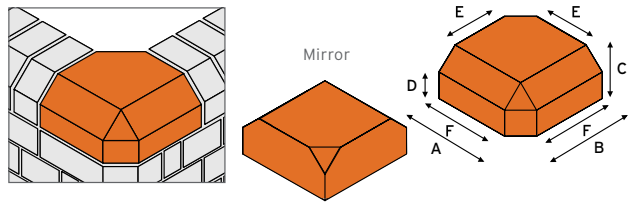
| Type No. | A | B | C | D | E |
|----------|-----|-----|-----|----|-----|
| AN.16.1 | 215 | 215 | 102 | 46 | 103 |
| AN.16.2 | 215 | 215 | 102 | 60 | 131 |



AN.17

Double cant external return with internal slope (canted corners on bed)

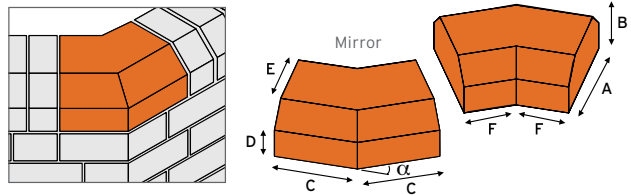
| Type No. | A | B | C | D | E | F |
|----------|-----|-----|-----|----|-----|-----|
| AN.17.1 | 215 | 215 | 102 | 46 | 103 | 159 |
| AN.17.2 | 215 | 215 | 102 | 60 | 131 | 173 |



AN.18

Double cant angle

| Type No. | A | B | C | D | E | F | α |
|----------|-----|-----|-----|----|-----|-----|----------|
| AN.18.1 | 215 | 102 | 159 | 46 | 103 | 101 | 30° |
| AN.18.2 | 215 | 102 | 159 | 60 | 131 | 101 | 30° |
| AN.18.3 | 215 | 102 | 159 | 46 | 103 | 70 | 45° |
| AN.18.4 | 215 | 102 | 159 | 60 | 131 | 70 | 45° |
| AN.18.5 | 215 | 102 | 159 | 46 | 103 | 35 | 60° |
| AN.18.6 | 215 | 102 | 159 | 60 | 131 | 35 | 60° |

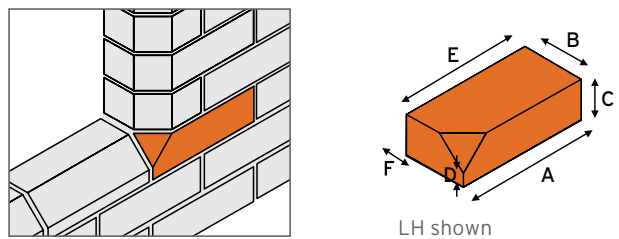


PLINTH BRICKS

PL.1

Plinth stop or cant stop (left or right hand)

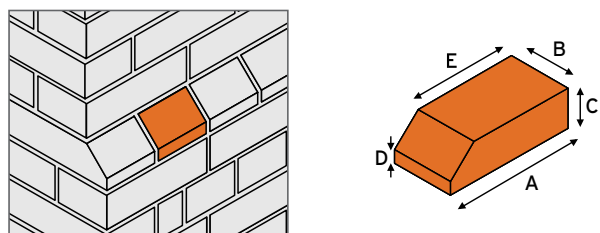
| Type No. | A | B | C | D | E | F |
|----------|-----|-----|----|----|-----|----|
| PL.1.1 | 215 | 102 | 65 | 9 | 159 | 46 |
| PL.1.2 | 215 | 102 | 65 | 23 | 173 | 60 |



PL.2

Plinth header

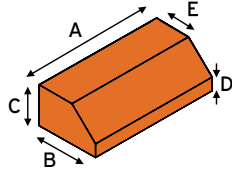
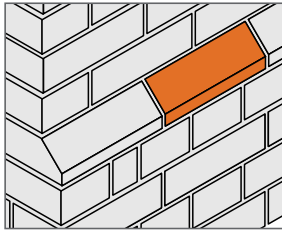
| Type No. | A | B | C | D | E |
|----------|-----|-----|----|----|-----|
| PL.2.1 | 215 | 102 | 65 | 9 | 159 |
| PL.2.2 | 215 | 102 | 65 | 23 | 173 |



P L . 3

Plinth stretcher

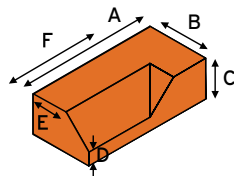
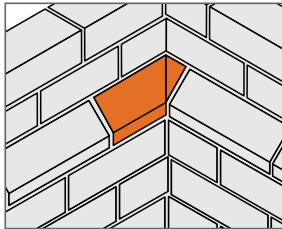
| Type No. | A | B | C | D | E |
|----------|-----|-----|----|----|----|
| PL.3.1 | 215 | 102 | 65 | 9 | 46 |
| PL.3.2 | 215 | 102 | 65 | 23 | 60 |



P L . 4

Plinth internal return (long) (left or right hand)

| Type No. | A | B | C | D | E | F |
|----------|-----|-----|----|----|----|-----|
| PL.4.1 | 215 | 102 | 65 | 9 | 46 | 169 |
| PL.4.2 | 215 | 102 | 65 | 23 | 60 | 155 |

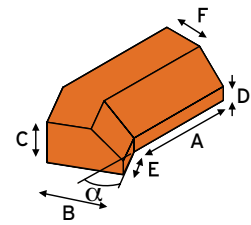
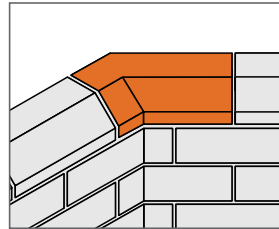


LH shown

P L . 6

Plinth internal angle (left or right hand)

| Type No. | A | B | C | D | E | F | α |
|----------|-----|-----|----|----|-----|----|----------|
| PL.6.1 | 164 | 102 | 65 | 9 | 51 | 46 | 30° |
| PL.6.2 | 164 | 102 | 65 | 23 | 51 | 60 | 30° |
| PL.6.3 | 164 | 102 | 65 | 9 | 51 | 46 | 45° |
| PL.6.4 | 164 | 102 | 65 | 23 | 51 | 60 | 45° |
| PL.6.5 | 164 | 102 | 65 | 9 | 51 | 46 | 60° |
| PL.6.6 | 164 | 102 | 65 | 23 | 51 | 60 | 60° |
| PL.6.7 | 159 | 102 | 65 | 9 | 102 | 46 | 30° |
| PL.6.8 | 159 | 102 | 65 | 23 | 102 | 60 | 30° |
| PL.6.9 | 159 | 102 | 65 | 9 | 102 | 46 | 45° |
| PL.6.10 | 159 | 102 | 65 | 23 | 102 | 60 | 45° |
| PL.6.11 | 159 | 102 | 65 | 9 | 102 | 46 | 60° |
| PL.6.12 | 159 | 102 | 65 | 23 | 102 | 60 | 60° |
| PL.6.13 | 215 | 102 | 65 | 9 | 102 | 46 | 30° |
| PL.6.14 | 215 | 102 | 65 | 23 | 102 | 60 | 30° |
| PL.6.15 | 215 | 102 | 65 | 9 | 102 | 46 | 45° |
| PL.6.16 | 215 | 102 | 65 | 23 | 102 | 60 | 45° |
| PL.6.17 | 215 | 102 | 65 | 9 | 102 | 46 | 60° |
| PL.6.18 | 215 | 102 | 65 | 23 | 102 | 60 | 60° |

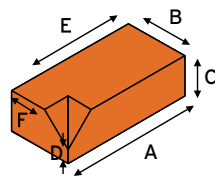
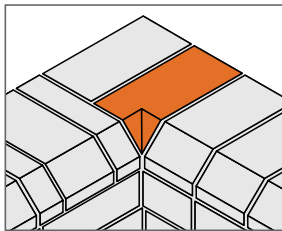


LH shown

P L . 5

Plinth internal return (short) (left or right hand)

| Type No. | A | B | C | D | E | F |
|----------|-----|-----|----|----|-----|----|
| PL.5.1 | 215 | 102 | 65 | 9 | 159 | 46 |
| PL.5.2 | 215 | 102 | 65 | 23 | 173 | 60 |

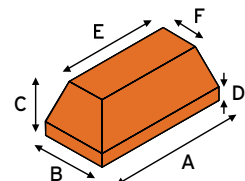
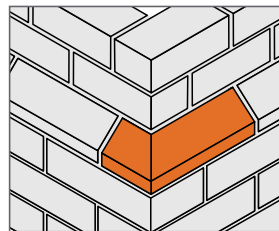


LH shown

P L . 7

Plinth external return (left or right hand)

| Type No. | A | B | C | D | E | F |
|----------|-----|-----|----|----|-----|----|
| PL.7.1 | 215 | 102 | 65 | 9 | 159 | 46 |
| PL.7.2 | 215 | 102 | 65 | 23 | 173 | 60 |

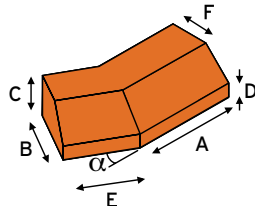
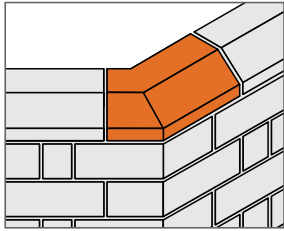


LH shown

PL.8

Plinth external angle (left or right hand)

| Type No. | A | B | C | D | E | F | α |
|----------|-----|-----|----|----|-----|----|----------|
| PL.8.1 | 159 | 102 | 65 | 9 | 102 | 46 | 30° |
| PL.8.2 | 159 | 102 | 65 | 23 | 102 | 60 | 30° |
| PL.8.3 | 159 | 102 | 65 | 9 | 102 | 46 | 45° |
| PL.8.4 | 159 | 102 | 65 | 23 | 102 | 60 | 45° |
| PL.8.5 | 159 | 102 | 65 | 9 | 102 | 46 | 60° |
| PL.8.6 | 159 | 102 | 65 | 23 | 102 | 60 | 60° |
| PL.8.7 | 215 | 102 | 65 | 9 | 102 | 46 | 30° |
| PL.8.8 | 215 | 102 | 65 | 23 | 102 | 60 | 30° |
| PL.8.9 | 215 | 102 | 65 | 9 | 102 | 46 | 45° |
| PL.8.10 | 215 | 102 | 65 | 23 | 102 | 60 | 45° |
| PL.8.11 | 215 | 102 | 65 | 9 | 102 | 46 | 60° |
| PL.8.12 | 215 | 102 | 65 | 23 | 102 | 60 | 60° |

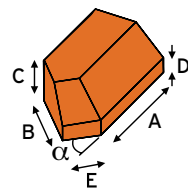
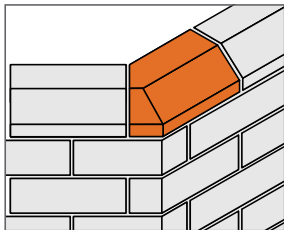


LH shown

PL.9

Plinth squint (left or right hand)

| Type No. | A | B | C | D | E | F | α |
|----------|-----|-----|----|----|----|----|----------|
| PL.9.1 | 164 | 102 | 65 | 9 | 51 | 46 | 30° |
| PL.9.2 | 164 | 102 | 65 | 23 | 51 | 60 | 30° |
| PL.9.3 | 164 | 102 | 65 | 9 | 51 | 46 | 45° |
| PL.9.4 | 164 | 102 | 65 | 23 | 51 | 60 | 45° |
| PL.9.5 | 164 | 102 | 65 | 9 | 51 | 46 | 60° |
| PL.9.6 | 164 | 102 | 65 | 23 | 51 | 60 | 60° |



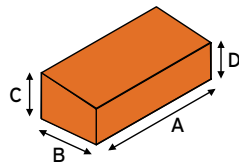
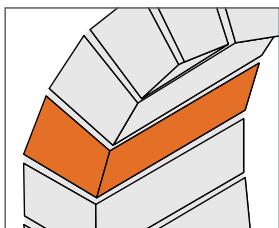
LH shown

ARCH BRICKS

AR.1

Tapered header

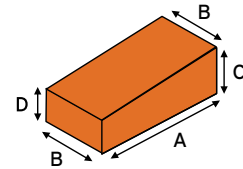
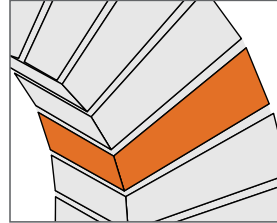
| Type No. | Unit Dimension | | | | Ideal Span | | No of bricks in semi-circle |
|----------|----------------|-----|----|----|------------|---------------------|-----------------------------|
| | A | B | C | D | Dimension | No. of whole bricks | |
| AR1.1 | 215 | 102 | 75 | 59 | 910 | 4 | 20 or 21 |
| AR1.2 | 215 | 102 | 75 | 64 | 1360 | 6 | 28 or 29 |
| AR1.3 | 215 | 102 | 75 | 66 | 1810 | 8 | 36 or 37 |
| AR1.4 | 215 | 102 | 75 | 69 | 2710 | 12 | 53 or 54 |



AR.2

Tapered stretcher

| Type No. | Unit Dimension | | | | Ideal Span | | No of bricks in semi-circle |
|----------|----------------|-----|----|----|------------|---------------------|-----------------------------|
| | A | B | C | D | Dimension | No. of whole bricks | |
| AR2.1 | 215 | 102 | 75 | 48 | 910 | 4 | 25 |
| AR2.2 | 215 | 102 | 75 | 55 | 1360 | 6 | 33 |
| AR2.3 | 215 | 102 | 75 | 58 | 1810 | 8 | 41 |
| AR2.4 | 215 | 102 | 75 | 63 | 2710 | 12 | 58 |

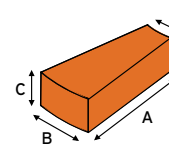
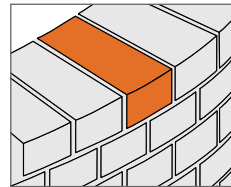


RADIAL BRICKS

RD.1

Radial header

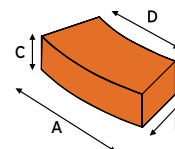
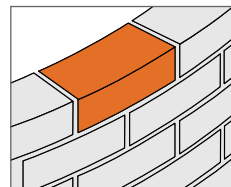
| Type No. | A | B | C | D | Ideal Radius | | No. of bricks in Quadrant |
|----------|-----|-----|----|-----|--------------|-------|---------------------------|
| | | | | | Outer | Inner | |
| RD1.1 | 215 | 108 | 65 | 52 | 450 | 235 | 6 |
| RD1.2 | 215 | 108 | 65 | 70 | 675 | 460 | 9 |
| RD1.3 | 215 | 108 | 65 | 80 | 900 | 685 | 12 |
| RD1.4 | 215 | 108 | 65 | 89 | 1350 | 1135 | 18 |
| RD1.5 | 215 | 108 | 65 | 97 | 2250 | 2035 | 30 |
| RD1.6 | 215 | 108 | 65 | 103 | 5400 | 5185 | 72 |



RD.2

Radial stretcher

| Type No. | A | B | C | D | Ideal Outer Radius | No. of bricks in Quadrant |
|----------|-----|-----|----|-----|--------------------|---------------------------|
| | | | | | | |
| RD2.2 | 226 | 102 | 65 | 190 | 675 | 4.5 |
| RD2.3 | 226 | 102 | 65 | 199 | 900 | 6 |
| RD2.4 | 226 | 102 | 65 | 208 | 1350 | 9 |
| RD2.5 | 226 | 102 | 65 | 215 | 2250 | 15 |
| RD2.6 | 226 | 102 | 65 | 221 | 5400 | 36 |

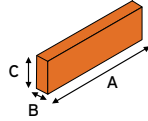
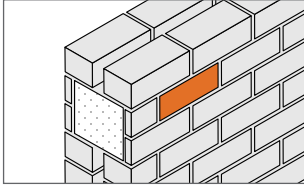


BRICK SLIPS

SL.1

Brick face slip

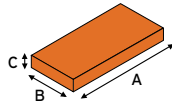
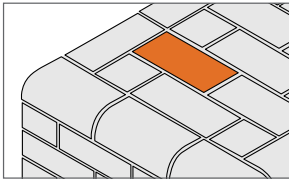
| Type No. | A | B | C |
|----------|-----|----|----|
| SL.1.1 | 215 | 25 | 65 |
| SL.1.2 | 215 | 30 | 65 |
| SL.1.3 | 215 | 40 | 65 |
| SL.1.4 | 215 | 50 | 65 |



SL.2

Brick bed slip

| Type No. | A | B | C |
|----------|-----|-----|----|
| SL.2 | 215 | 102 | 25 |

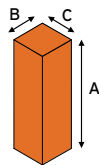
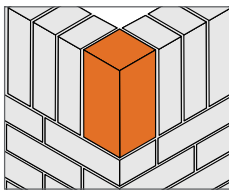


SOLDIER BRICKS

SD.1

Soldier return

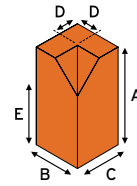
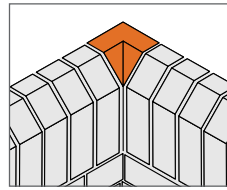
| Type No. | A | B | C |
|----------|-----|-----|-----|
| SD.1.1 | 215 | 65 | 65 |
| SD.1.2 | 215 | 102 | 102 |



SD.2

Internal soldier return to single cant on end

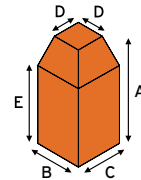
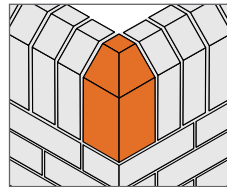
| Type No. | A | B | C | D | E |
|----------|-----|-----|-----|----|-----|
| SD.2.1 | 215 | 102 | 102 | 46 | 159 |
| SD.2.2 | 215 | 102 | 102 | 60 | 173 |



SD.3

External soldier return to single cant on end

| Type No. | A | B | C | D | E |
|----------|-----|-----|-----|----|-----|
| SD.3.1 | 215 | 102 | 102 | 46 | 159 |
| SD.3.2 | 215 | 102 | 102 | 60 | 173 |



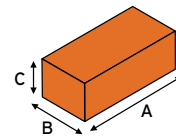
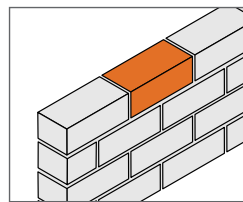
CUBOID BRICKS

CB.1

Cuboid bricks

| Type No. | A | B | C |
|----------|-----|-----|----|
| CB.1.1 | 190 | 90 | 65 |
| CB.1.2 | 190 | 90 | 90 |
| CB.1.3 | 215 | 102 | 50 |
| CB.1.4 | 215 | 102 | 53 |
| CB.1.5 | 215 | 102 | 65 |
| CB.1.6 | 215 | 102 | 73 |

| Type No. | A | B | C |
|----------|-----|-----|----|
| CB.1.7 | 215 | 102 | 80 |
| CB.1.8 | 233 | 112 | 73 |
| CB.1.9 | 233 | 112 | 80 |
| CB.1.10 | 290 | 90 | 65 |
| CB.1.11 | 290 | 90 | 90 |





BUILDING MADE BETTER.

BUILDING MADE BETTER WITH BIMBRICKS.COM

Michelmersh remains at the forefront of industry innovation, by continuing to invest and evolve manufacturing processes. At the same time it leads the way in offering intuitive, informative and supportive product data through the most up-to-date construction technology procedures. Acting rapidly on the Government's Construction Strategy published in May 2011, Michelmersh responded with the first range of clay product files. As the first brick manufacturer to introduce Building Information Modelling (BIM) files in the UK, it is now delighted to see a surge in industry support, acceptance and participation.



We are committed to upgrading our files alongside the latest BIM software developments. Our wide array of files include bricks, pavers and roof tile products, involve improved textures and a breadth of product meta-data, through easy to use schedule material take-off sheets. We have embraced and embarked on the Government's programme for sector modernisation with two objectives: to reduce capital cost and the carbon burden from the construction and operation of the built environment. Central to these ambitions is the adoption of information rich BIM technologies, process and collaborative behaviours that will unlock more efficient ways of working at all stages of the project's life-cycle.

Michelmersh has therefore introduced bimbricks.com, the one-stop website for designers, contractors, facilitators and BIM managers to visit, explore, download and interact with freely available files and product information.

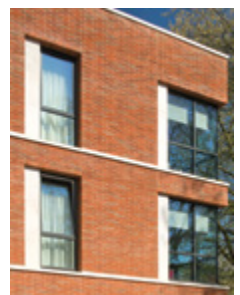
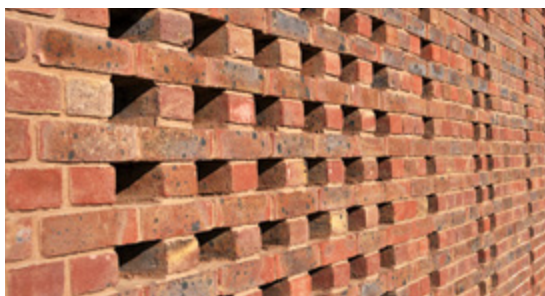
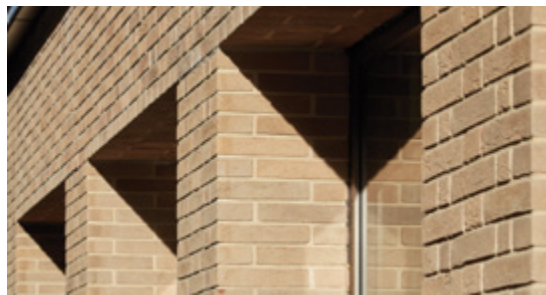
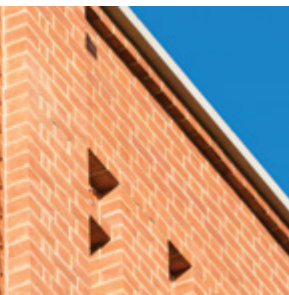
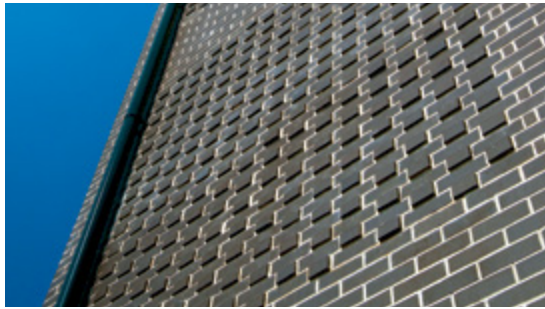
This rich 3D content aims to switch on new, existing and prospective users of BIM, emphasising the manufacturer's ability to offer bespoke products of high quality craftsmanship, alongside high standards of customer service to attract a greater following.





GALLERY







GALLERY



SECTION

4

Bricks by colour

108

Pavers by colour

112

PRODUCTS

bycolour

bricks

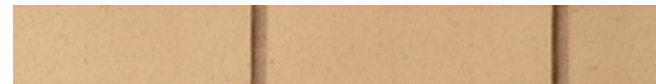
BY COLOUR



PORCELAIN WHITE SMOOTH PAGE 16



WINDERMERE GREY PAGE 17



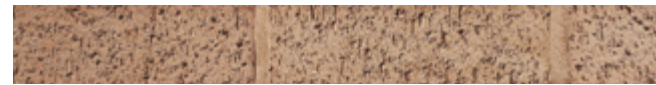
METRO BUFF SMOOTH PAGE 11



PENNINE BUFF WIRECUT PAGE 15



MUNICIPAL GREY SMOOTH PAGE 14



BUFF DRAGWIRE PAGE 21



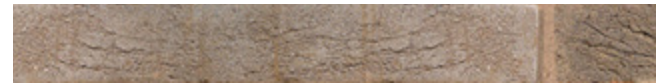
MAPPLEWELL LIGHT PAGE 28



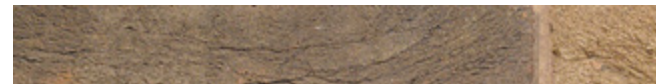
BUFF RUSTIC PAGE 22



WREKIN BUFF PAGE 17



i-line BF05 PAGE 69



i-line BF04 PAGE 69



UNIVERSITY BUFF PAGE 47



PARK ROYAL PAGE 14



PINHOLE CROFTON BUFF PAGE 29



COTTESMORE GREY PAGE 23



WHITWICK MULTI BUFF PAGE 47



STAMFORD BUFF PAGE 46



RUSSET GREY PAGE 43



LINDFIELD YELLOW MULTI PAGE 54



DANEHILL YELLOW PAGE 50



OXBRIDGE YELLOW MULTI PAGE 43



GOLDTHORPE MIXTURE PAGE 27



LIGHT RUSSET PAGE 42



GOLDEN RUSSET PAGE 41



CATHEDRAL GREY PAGE 36



FLAMBOROUGH GOLD PAGE 24



HAMPSHIRE STOCK DARK MULTI PAGE 60



RIPLEY RUSTIC PAGE 32



SELECTED DARK PAGE 55



MULTI BRINDLE PAGE 43



HAMPSHIRE STOCK LIGHT MULTI PAGE 65



HADLEY RED SMOOTH PAGE 11



i-line CF08 PAGE 72



i-line CF01 PAGE 72



HAMPSHIRE RED PAGE 41



i-line BF01 PAGE 68



i-line CF05 PAGE 72



WREKIN BERKSHIRE PAGE 17



HADLEY BRINDLE WIRECUT PAGE 11



HAMPSHIRE STOCK RED MULTI ATR PAGE 65



FARNHAM RED PAGE 41



SUSSEX RED MULTI PAGE 46



i-line BF02 PAGE 68



HENLEY RED PAGE 42



HAMPSHIRE STOCK COBHAM BLEND PAGE 60



LIGHT VICTORIAN RED PAGE 43



HADLEY RED WIRECUT PAGE 11



ASHBY RED PAGE 36



SELECTED LIGHT PAGE 55



WREKIN DARK RED PAGE 17



i-line BF03 PAGE 68



HAMPSHIRE STOCK DOWNS BLEND PAGE 60



HORSHAM RED MULTI PAGE 42



WINDSOR RED MULTI PAGE 47



SYNTHESIS S21 PAGE 79



DARK VICTORIAN RED PAGE 36



SYNTHESIS S01 PAGE 76



MOORLAND SANDFACED PAGE 28



RIDINGS GOLD ANTIQUE PAGE 31



RIDINGS WEATHERED BLEND PAGE 31



WEATHERED RED PAGE 33



VICTORIAN RED PAGE 32



FINE TEXTURED RENOVATION BLEND (LIGHT) PAGE 41



RURAL MULTI PAGE 54



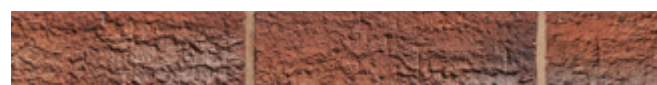
HADLEY BRINDLE SMOOTH PAGE 10



SYNTHESIS S03 PAGE 76



BRETTON DRAGWIRE PAGE 20



WOLDS AUTUMN BLEND PAGE 33



THULSTON WINNINGTON BLEND PAGE 47



SYNTHESIS S30 PAGE 79



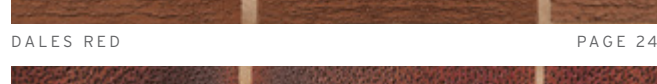
RED RUSTIC PAGE 30



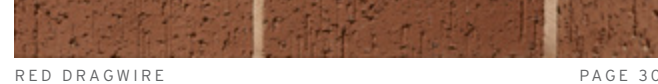
DALES RED PAGE 24



RED DRAGWIRE PAGE 30



PINHOLE PRIORY PAGE 29



MOORLAND RUSTIC PAGE 28



OLDSTOCK ANTIQUE PAGE 29



KIRKBY RUSTIC PAGE 27



HEATHER RUSTIC PAGE 27



RIBBED RED PAGE 30



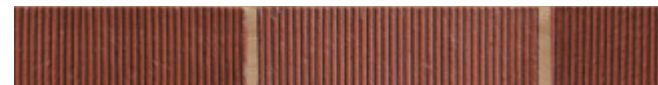
CIVIC MULTI PAGE 22



FIRST QUALITY MULTI PAGE 50



FINE TEXTURED RENOVATION BLEND (MEDIUM) PAGE 41



BRODSWORTH MIXTURE PAGE 20



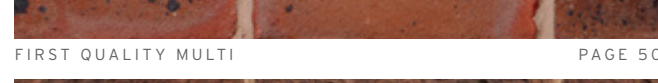
ESKDALE MULTI PAGE 24



CLAYBURN CIVIC PAGE 23



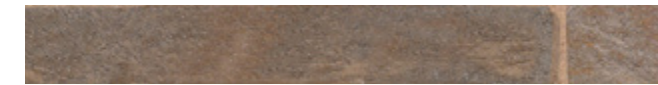
HANDMADE PAGE 54



CLAYBURN CIVIC REVERSE PAGE 23



SYNTHESIS S11 PAGE 77



i-line CF13 PAGE 73



SYNTHESIS S09 PAGE 76



STERLING GREY PAGE 16



i-line CF14 PAGE 73



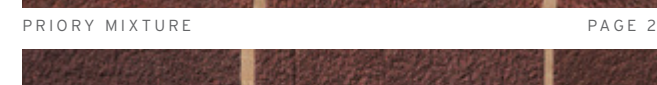
IPSWICH SMOOTH PAGE 10



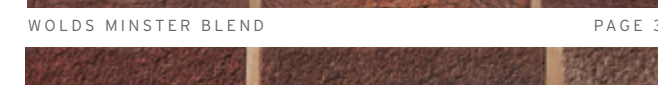
PRIORY MIXTURE PAGE 29



WOLDS MINSTER BLEND PAGE 33



WILLERBY RED PAGE 33



HEATHER SANDFACED PAGE 27



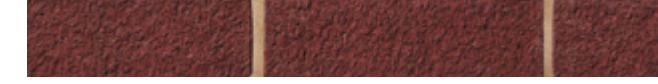
FINE TEXTURED RENOVATION BLEND (DARK) PAGE 41



RED SANDFACED PAGE 30



SYNTHESIS S20 PAGE 79



CRIGGLESTONE RED PAGE 24



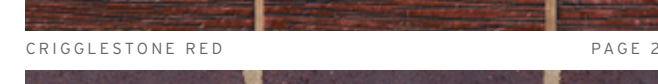
SYNTHESIS S14 PAGE 77



PURPLE WIRECUT PAGE 15



BROWN DRAGWIRE PAGE 21



SYNTHESIS S17 PAGE 78



STEEL GREY PAGE 46



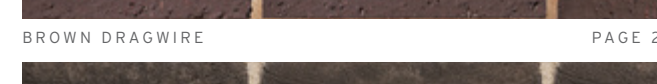
BROWN BRINDLE PAGE 20



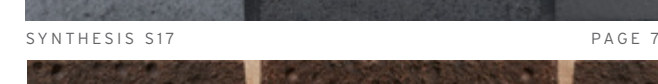
BLACK SMOOTH PAGE 10



BROWN RUSTIC PAGE 21



CRIGGLESTONE BROWN PAGE 23



BROWN SANDFACED PAGE 21



BLACK WIRECUT PAGE 10



ANTHRACITE PAGE 50



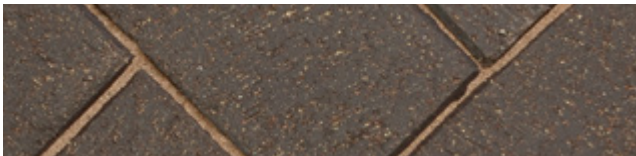
SYNTHESIS S15 PAGE 78



SYNTHESIS S19 PAGE 79

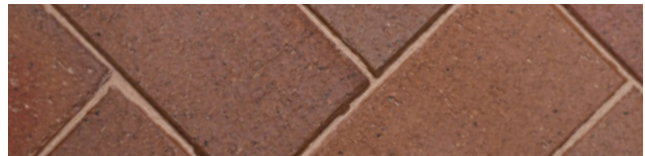
pavers

BY COLOUR



CHARCOAL CHAMFERED PAVERS

PAGE 84



HADLEY BRINDLE CHAMFERED PAVERS

PAGE 84



HADLEY RED CHAMFERED PAVERS

PAGE 84



SQUARE EDGE PAVERS

PAGE 84



Due to the limitations of the printing process brick colours in this document should be used for guidance only and not for exact colour match. For samples please contact our sales team on 0844 931 0022.

ENHANCING

our built environment

FOR GENERATIONS TO COME



Michelmersh Brick Holdings PLC strives to be a well invested, long term, sustainable and environmentally responsible business. We aim to lead the way in producing some of Britain's premium clay products and enhancing our built environment by adding value to the architectural landscape for generations to come.

Michelmersh Brick Holdings PLC holds the following accreditations:

- **Energy Management ISO 50001**
- **Environmental Management ISO 14001**
- **Quality Management ISO 9001**
- **Responsible Sourcing BES 6001**



MICHELMERSH
Britain's Brick Specialists

Michelmersh Brick Holdings PLC
Freshfield Lane, Danehill
Haywards Heath
Sussex RH17 7HH

Tel: 0844 931 0022
Fax: 0844 931 0021
sales@mbhplc.co.uk
www.mbhplc.co.uk