



Jaymart

Kum Kleen II Dust/ Wet Arrester Mat Product Information

Kum Kleen 2 is a high specification loose lay matting. Solution dyed high twist bicolour nylon fibre, which is attached to a long lasting rubber backing. The mat can be machine washed at 40 degrees celsius and is a laundry mat . Has anti-trip edging to all 4 sides.

Kum Kleen 2

Mat Sizes

85cm x 60cm, 120cm x 85cm, 150cm x 85cm, 190cm x 115cm, 240cm x 115cm

Edged on all 4 sides. Sizes include edging

Special sizes can be manufactured upto 8m x 1.5m wide or 6m x 2m wide



New Carcoal/ Grey

**Indoor heavy traffic
Mats Only**

**7mm
Gauge**

Colours



New Black/ White



New Carcoal/ Grey



New Black/ Grey



New Blue



New Blue/ Black



New Red/ Black



New Green Mottle



New Brown/ Black



New Black/ Mink

Kum Kleen 2 Specification

Product Construction

Solution dyed high twist nylon tufted pile with 100% nitrile rubber backing

Sizes (ca.)

55cm x 60cm, 85cm x 120cm, 85cm x 150cm, 85cm x 300cm, 115cm x 180cm, 115cm x 200cm, 115cm x 240cm, 150cm x 250cm

Fabric Weight (ca.)

760gms/m²

Total Weight (ca.)

2260gms/m²

Pile Height

10mm

Border Thickness

2.1mm

Electrical Behavior

Antistatic

Energy Backing

Allows optimum elimination of water during extraction process (reduces/ eliminates drying time)

UV Resistance

ISO 105-B02 test rated on blue scale (maximum mark)

Fire Classification

ISO 123501 test rated Efl

Laundering

Machine washable up to 40 degrees celsius

Warranty

Please refer to our written guarantee.



Our 4 step process to a cleaner environment

Step 1

The best way to keep your premises clean is to stop dirt from even getting through the front door. Effective exterior matting scrapes clean and wipes dry, leaving the worst dirt and grit outside, and allowing subsequent interior matting to clean even better.

Step 2

Working in a similar way to exterior matting, this is similarly tough and durable matting that carries on the work to remove the last of the most damaging soil and grit, and continue the drying process.

Step 3

With the worst of the damp and debris now dealt with, secondary internal matting is a high-specification, high-performance product that finishes the dusting and drying.

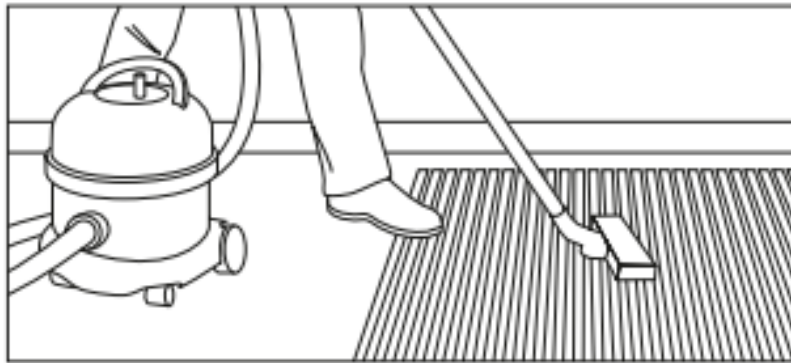
Step 4

The foyer is one of the highest traffic areas in your building so, however effective your entrance matting, easy to clean, highly durable and attractive carpet that always looks its best will help you make a great first impression – every time.

Kum Kleen II Cleaning & Maintenance

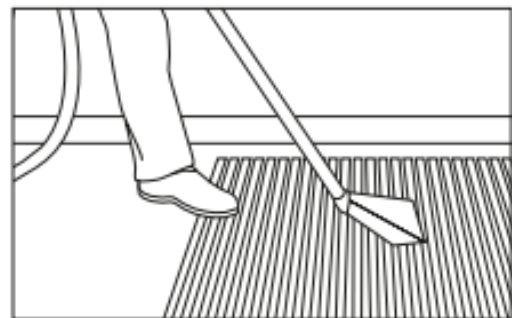
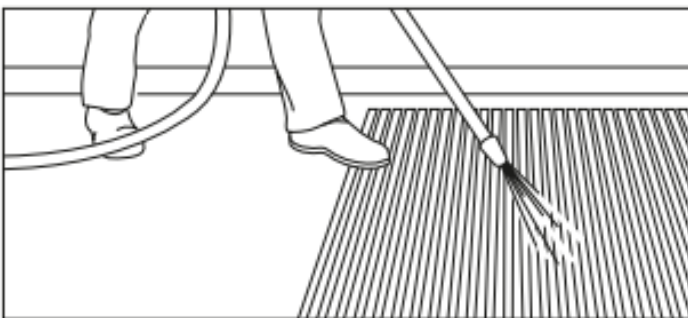
Maintenance

We recommend daily vacuuming with suction attachment for best appearance retention and longer working life.



For periodic maintenance the best results can be achieved by the periodic use of a spray or dry extraction carpet cleaning machine, or where possible by the removal of the matting for pressure washing or steam cleaning.

The use of a mild detergent (neutral pH) cleaning solution in the carpet cleaning machine should loosen ingrained soiling and aid the removal of oils and grease.



More stubborn stains should be treated with a solvent based spot remover prior to re-cleaning with the detergent solution.

Chewing gum can be removed by freeze spraying or with a proprietary chewing gum remover and then scraped or combed out of the matting carpet pile. This should be done before the full cleaning process is started.

Machine washable upto 40 degrees celsius.

Environmental Impact/ Responsibility

Our Products Use 100% recycled Aluminium and can be recycled after use making our aluminium mat products very environmentally friendly. This combined with the ability to replace the insert material rather than replacing the whole mat, means that although not directly eligible for BREEAM Credits selecting Jaymart will help in supporting your BREEAM certification.

We Manufacture in the United Kingdom to precise specifications/ measurements. This means Jaymart can reduce waste and transport.

Our products are extremely Hardwearing and will reduce the need for frequent replacement to support BREEAM MAT 05 criteria and also minimise the use of harmful cleaning chemicals and cleaning/ maintenance costs for the end user.

BREEAM MAT 01 addresses the environmental impact through the lifecycle of the product. The Jaymart aluminium entrance matting system have the ability to refurbish rather than replace means that our products can further support your aims. It will also help with meeting BREEAM MAT 06 requirements. We can also offer products made from natural inserts from sustainable sources to further meet environmental aims. The expected useful lifespan when refurbished is 30 years approximately dependent on wear and correct maintenance being carried out.



Proudly Manufactured in The UK



100% Recycled Aluminium





Jaymart

**Jaymart Rubber & Plastics
Limited**

**Roman Way, Crusader
Park,**

Warminster

BA12 8SP

Tel 01985 218994

Email: sales@jaymart.co.uk

www.jaymart.co.uk