



Cubicle system PRIMO



KEMMLIT For every demand

As market leader for washroom cubicles, KEMMLIT offer a variety of high class solutions ranging from cubicles and lockers to entire washrooms. Everything we do is based on a clear commitment to the highest quality regarding products, our consulting service and installation.

What sets us apart is qualified know-how, state-of-the-art manufacturing and innovative design. For these reasons we have received numerous prizes and awards within the last few years.

What can we do for you?

For further information:
www.kemmlituk.com
Status 07/2017



reddot award 2016
winner



product
design award
2012



PRIMO at a glance

KEMMLIT For every demand	2
PRIMO Smooth, wet area suitable, sturdy	4
PRIMO Kn 42 mm composite elements	6
PRIMO F 30 mm composite elements	7
PRIMO Layout solutions	8
PRIMO F Suspended solution	10
PRIMO F Changing cubicles	11
PRIMO Technical details	13
PRIMO Grab bars	14
PRIMO Door handles	15
saniQub Partition system	16
saniApps Accessories for partition system	17
PRIMO Complementary products	18
PRIMO Planning aid	20
saniQub Planning aid	24
PRIMO Colour concept	25
YOUR KEMMLIT project	26
KEMMLIT Our promise	27



kemmlituk.com



PRIMO Kn with recessed supporting legs combined with partition system saniQub, in traffic white 9317

PRIMO Smooth, wet area suitable, sturdy

Innovation is a trademark of KEMMLIT. In the 1970s, KEMMLIT launched PRIMO - the first solid grade laminate HPL sandwich system. Since then, the system has been continually further developed and improved. The construction with foam-filled PVC frames and visible door stop profiles gradually developed into a smooth-surfaced

system with environmentally friendly components. Meanwhile PRIMO is available in two different constructions: PRIMO Kn made of 42 mm thick and PRIMO F made of 30 mm thick solid grade laminate HPL composite elements. Both solutions are defined by their absolute smooth-surfaced appearance, wet-area suitability and stability.

The innovative partition system saniQub as well as numerous accessories ensure maximum convenience, while the comprehensive colour palette practically meets every colour preference. And all this, within very short delivery times. PRIMO delights customers and architects from the outset.



PRIMO F with recessed supporting legs, door handles in stainless steel, aluminium head rail, finish in special decor



Smooth-surfaced



Wet-area suitable



Sturdy

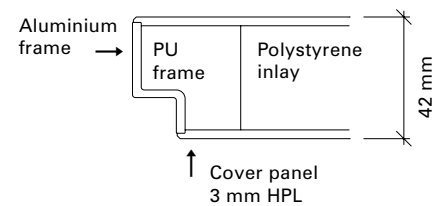


PRIMO Kn support-optimised with recessed supporting legs, door handles and head rail in stainless steel, in graphite 7808

PRIMO Kn 42 mm composite elements

PRIMO Kn meets the highest requirements concerning aesthetics and functionality. The system is smooth-surfaced and rebated. Doors and panels are made of 42 mm thick composite elements with a smooth surfaced aluminium frame and an internal PU-enforcement for maximum torsion resistance and longevity. A special protective layer on the HPL surface increases the scratch and abrasion resistance.

The water resistant solid grade laminate HPL material is easy to clean and offers the best requirements for use in wet areas. In order to withstand intense wear, a solid three-roller edge hinge with stainless steel axis was developed for this system. Sturdy furniture and the construction made of 42 mm solid grade laminate HPL composite elements result in maximum stability and longevity.



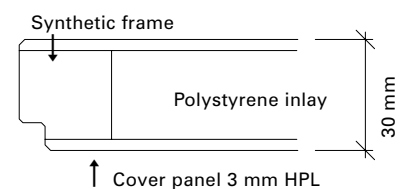


PRIMO F support-optimised with recessed supporting legs, stainless steel furniture, stainless steel head rail and individual digital print

PRIMO F 30 mm composite elements

The cubicle system PRIMO F is also smooth surfaced and rebated. Doors and panels are made of a 30 mm thick composite construction with an internal synthetic frame. Both sides are bonded with 3 mm thick solid grade laminate HPL panels in various decors. The edges are shapely milled. The inlay consists of polystyrene. PRIMO F is designed for both wet and dry areas.

Electric lines for electric connections can be invisibly passed through the elements. Along with stability another advantage of the system is the maximum versatility: Due to the flexible construction, PRIMO F can be more than just a WC cubicle system. PRIMO F is also ideally suitable for changing cubicles, group changing cubicles and therapy or treatment cubicles.





PRIMO Kn floating with recessed supporting leg and head rail, in quarz grey 7708

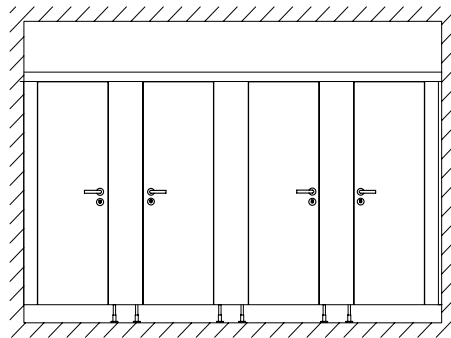


PRIMO Kn with supporting legs and head rail in the front, in traffic white 9317

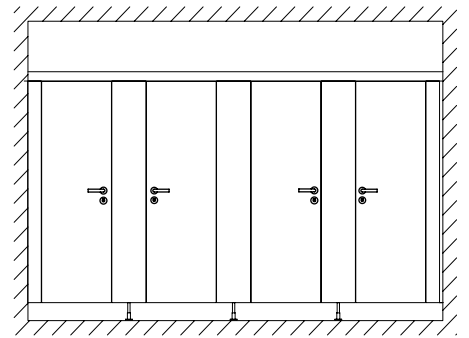


PRIMO Layout solutions

The standard PRIMO version has supporting legs and head rail in the front. As an alternative, PRIMO is available as support-optimised version, with supporting legs in the partitions. This adds a modern look and airiness to the system. On request the head rail can be recessed in addition, for a floating impression.



PRIMO in the standard version

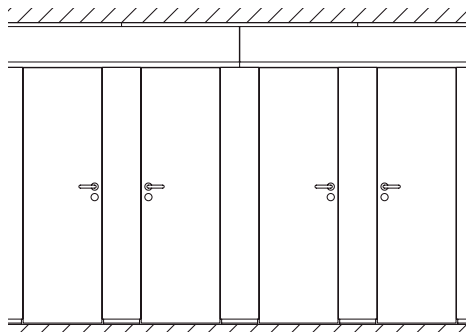


PRIMO as a support-optimised option with supporting legs situated in the partitions

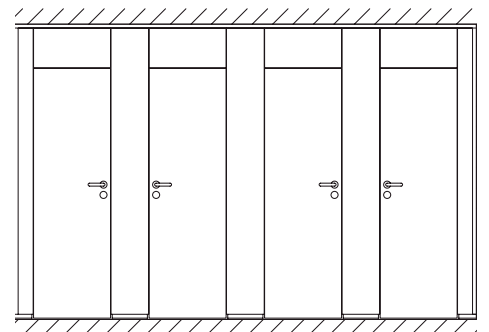


PRIMO F floor-to-ceiling with upper panels, in light grey 7208

For the floor-to-ceiling solution the doors, front and partition panels are closed from floor to ceiling, for maximum privacy.



PRIMO F floor-to-ceiling with upper panel or upper glass panel



PRIMO F with floor-to-ceiling elements and upper panels above the doors

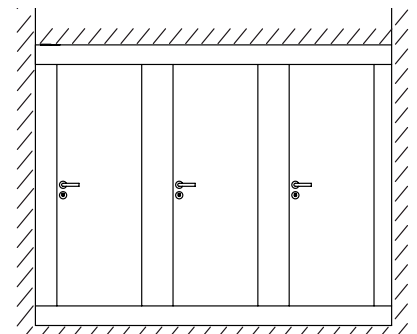


PRIMO F changing cubicles suspended with aluminium carrier, in special colour

PRIMO F Suspended solution

With the suspended solution, the carrier section is held by fastenings in the masonry or by floor supports, which dispenses with the need for subsequently drilling holes in the floor. All the front wall panels are suspended on the carrier section and invisibly screw-connected. The aluminium carrier is firmly bolted to the masonry with heavy-duty plugs.

When working with gypsum plaster-board walls, reinforcement inserts are additionally required on site. The floor supports are also firmly secured to the floor. The number of floor supports is determined by the span width. This technically sophisticated version is also frequently used for changing cubicles in swimming pools.



PRIMO F suspended option



PRIMO F changing cubicles with digital print according to customers request

PRIMO F Changing cubicles

PRIMO F is optimally suitable for dry, humid and wet areas. As shower or changing cubicles as well as group changing areas for both outdoor and indoor swimming pools, leisure centres, rehabilitation and therapy centres, for camp sites and fitness studios.

The changing cubicles are outfitted with integrated bench seating and central locking system to close both doors. On request the cubicles can be additionally outfitted with mirrors, shelves or climb-over protection.



PRIMO F support-optimised with recessed supporting legs.
Door handles and head rail made of stainless steel, in quartz grey 7708

PRIMO Technical details



PRIMO Kn: U-profile made of aluminium, satin anodised.



PRIMO Kn: Optionally shadow gap with aluminium profile, satin anodised.



PRIMO Kn: Head rail made of aluminium 42 x 42 mm, satin anodised, above the front.



PRIMO Kn / PRIMO F: The three-roller edge hinge is durable, maintenance-free, screwed six-times and cannot be un-hinged.



PRIMO Kn / PRIMO F: Depending on the room situation, the doors can be fitted with an integrated spring system within the three-roller edge hinge for self-closing or self-opening.



PRIMO Kn: As an option to the well-proven three-roller edge hinge PRIMO Kn can also be outfitted with a concealed special hinge.



PRIMO Kn / PRIMO F: Ergonomic door knob with red/white indicator optionally in nylon, aluminium or stainless steel.



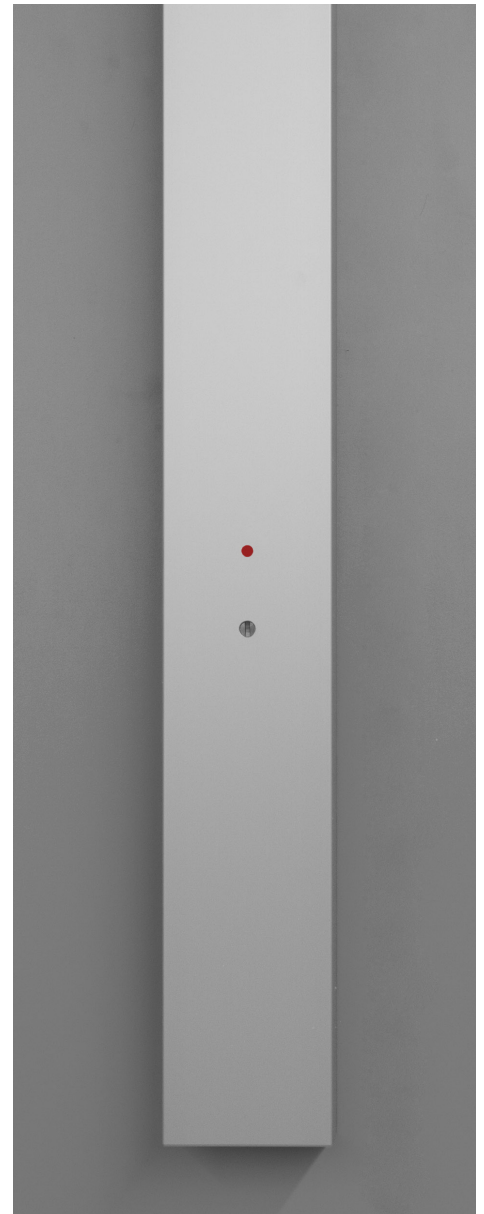
PRIMO F: Central under bench locking system with red/white indicator for changing cubicles.



PRIMO F: Smooth surfaced, milled finger protection with pivot hinge.



Grip bar GS 40 with LED-indicator



Grip bar GS 90 with LED-indicator

PRIMO Grip bars

An exclusive alternative to the classical door handles, KEMMLIT offers high class grip bars in three different options: Grip bar GS 25 made of aluminium round shaped with a diameter of 25 mm. GS 25 is available in length 400 mm and 800 mm. The free-/occupied indicator is situated next to the grip bar.

As a second option the grip bar GS 40 made of aluminium is available in three lengths 430 mm, 1165 mm and 1300 mm.

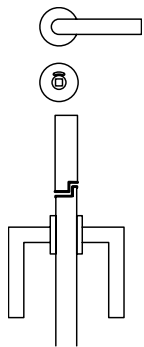
The free-/occupied indicator is available either mechanically or with LED. GS 90 is the third option and is shaped in an ageless square design. The grip bar is 90 mm wide and 700 mm long. For GS 90 the indicator is also available either mechanically or with LED.



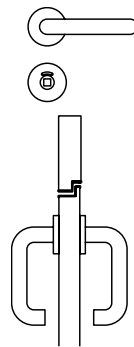
L-handles made of satin anodised aluminium with indicator and aluminium square shaped emergency release

PRIMO door handles

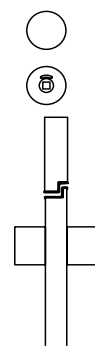
L-handles made of satin anodised aluminium or matt anodised stainless steel with indicator.



Safety door handle U-shaped made of coloured nylon, aluminium or stainless steel with indicator.



Door knob made of nylon, aluminium or stainless steel with indicator.





WC cubicle system PRIMO Kn combined with partition system saniQub with SystemApp M

saniQub[®] Partition system

Our innovative saniQub partition system offers more than just a separation of two cubicles. All the sanitary accessories can be smoothly integrated into the high-quality composite element. Thus it results in an aesthetically perfect overall appearance. The partition walls are equipped according to your individual requests and delivered pre-assembled. saniQub is a custom-made solution, which does not require any subsequent assembly of accessory elements.

You will receive a custom made solution, saving backfitting installation of accessories. saniQub consists of 3 mm solid HPL boards with solid aluminium frames which are filled with polystyrene. The extensive selection of accessories, saniApps, fulfil almost any requirement. The selection ranges from standard elements such as toilet paper holders and brush sets to stainless steel mirrors and fragrance dispensers.



saniApp Toilet brush set



SystemApp M pre-configured system element

saniApps® Accessories for partition system

saniApps can be flexibly planned according to your individual needs. In addition to classical saniApp elements such as toilet paper holders, toilet brush sets and waste bins, it is also possible to include fragrance and or hygiene bag dispensers, and mirrors. Alternatively, you can order saniApps as pre-configured system elements in two different designs: SystemApp M made of stainless steel with an elegant, brushed surface.

Dimensions: 388 x 705 mm, consisting of: double roll holder for commercial toilet paper, fragrance dispenser, toilet brush set and a waste bin with hygiene bag compartment. Or SystemApp L made of stainless steel with an elegant, matt brushed surface. Dimensions: 388 x 900 mm, same construction as SystemApp M, but with additional shelf and disinfectant dispenser.



Modesty screens made of glass, HPL or particle board



Accessories made of stainless steel, aluminium or nylon



Shelves made of nylon



Locker system type S with digital print, engraved numbering and letter drop

PRIMO Complementary products

Further products such as modesty screens, sanitary accessories, shelves as well as locker systems are coordinated to fit PRIMO and perfectly complement the system.



PRIMO Kn floating with supporting legs, door knobs and head rail made of aluminium, with digital print

PRIMO Kn Planning aid

	Standard	Optionally available for a surcharge	
WC cubicles	<ul style="list-style-type: none"> • WC cubicles with supporting legs and headrail in the front 	<ul style="list-style-type: none"> • Support optimised WC cubicles (supp. legs recessed, only for rows of cubicles) • WC cubicles without under panel clearance 	<ul style="list-style-type: none"> • Floating WC cubicles (supp. legs and head rail, only for rows of cubicles) • WC cubicles floor-to-ceiling
Single cubicle	<ul style="list-style-type: none"> • Supp. legs and head rail in the front (recessed head rail not available) 	<ul style="list-style-type: none"> • Anteroom separation between WC area and hand wash area, also floor-to-ceiling 	
Cubicle height	<ul style="list-style-type: none"> • 2000 mm incl. 150 mm under panel clearance (-10 / +25 mm) • 2135 mm incl. 150 mm under panel clearance (-10 / +25 mm) 	<ul style="list-style-type: none"> • Special height on request, max. 2800 mm floor-to-ceiling closed, doors floor-to-ceiling available 	
Front panels (pilasters)	<ul style="list-style-type: none"> • 140 mm up to 1580 mm element width, can be individually planned 		
Cubicle depth	<ul style="list-style-type: none"> • Up to 1600 mm 	<ul style="list-style-type: none"> • Partitions larger than 1600 mm are provided with a tongue-and-groove joint and re-enforced with an additional supp. leg and head rail. In case of floor-to-ceiling construction the partition will be joint from 1200 mm 	
Panel and door material	<ul style="list-style-type: none"> • 42 mm thick laminate composite elements 3 mm, cover panel, core made of polystyrene 		
Edge protection	<ul style="list-style-type: none"> • Solid aluminium frame, integrated flush in the panel, anodised (E6EV1) 		
Door stop	<ul style="list-style-type: none"> • Rebated, inwards or outwards opening within one front available. Threaded, continuous rubber buffer for soft closing 		
Door clearance	<ul style="list-style-type: none"> • For cubicle height of 2135 mm: clear opening height 2093 mm 	<ul style="list-style-type: none"> • Max. 2790 mm for floor-to-ceiling doors • Special door widths available on request 	<ul style="list-style-type: none"> • Door upper panel min. 450 mm in case doors are lower
Door widths	<ul style="list-style-type: none"> • 570 mm (nominal size) • 650 mm (nominal size) • 750 mm (nominal size) • 980 mm (nominal size) 		
Head rail	<ul style="list-style-type: none"> • 42 x 42 mm, aluminium profile, anodised (E6EV1) 	<ul style="list-style-type: none"> • 40 x 30 mm above the front, stainless steel • 40 x 30 mm floating cubicles, stainless steel 	<ul style="list-style-type: none"> • 40 x 30 mm floating cubicles, aluminium
Ceiling connection		<ul style="list-style-type: none"> • With shadow gap (in case of suspended ceilings, solid inlays required) 	
Supporting legs / floor connection	<ul style="list-style-type: none"> • Satin anodised aluminium supporting legs with stainless steel floor plate and aluminium cover sleeve, 150 mm under panel clearance, steplessly adjustable 	<ul style="list-style-type: none"> • Satin anodised aluminium supp. leg with individual height, with stainless steel foot plate and aluminium cover sleeve, 80 - 215 mm under panel clearance • Without under panel clearance, with aluminium profile (shadow gap) and ventilation below the door with 30 mm gap 	<ul style="list-style-type: none"> • Stainless steel supporting leg with individual height with stainless steel cover sleeve, 80 - 215 mm under panel clearance • Adhesive supporting legs (> 80 mm under panel clearance), not available for support optimised construction

	Standard	Optionally available for a surcharge	
Wall connection	<ul style="list-style-type: none"> • U-profile, satin anodised or powder-coated aluminium 	<ul style="list-style-type: none"> • U-profile, stainless steel 	<ul style="list-style-type: none"> • Shadow gap with aluminium profile, satin anodised
Corner cubicle connection	<ul style="list-style-type: none"> • Flush mounted corner profile made of satin anodised aluminium (42x42mm) 	<ul style="list-style-type: none"> • Flush mounted corner profile made of stainless steel (40 x 40 mm) 	
Angular wall connection		<ul style="list-style-type: none"> • Angular wall connection with internal U-channel, satin anodised aluminium 	
Angular panel connection		<ul style="list-style-type: none"> • Aluminium profiles, internal U-channel, satin anodised 	
Hinges	<ul style="list-style-type: none"> • Three-roller edge hinge made of aluminium (145 mm) with stainless steel axis, screwed 6 times 	<ul style="list-style-type: none"> • Three-roller edge hinge with spring made of aluminium (145 mm) with stainless steel axis • Three-roller edge hinge with spring made of stainless steel (145 mm) 	<ul style="list-style-type: none"> • Three-roller edge hinge made of stainless Steel (145 mm) • Concealed hinge system
Finger protection		<ul style="list-style-type: none"> • Aluminium safety profile on the hinge side 	
Door handles/locking	<ul style="list-style-type: none"> • U-shaped nylon door handle and turning latch made of nylon with square emergency release, locking status visible both inside and outside 	<ul style="list-style-type: none"> • Aluminium door handle, L-shaped • Aluminium door handle, U-shaped • Stainless steel door handle, L-shaped • Stainless steel door handle, U-shaped 	<ul style="list-style-type: none"> • Special door handles on request
Door knobs		<ul style="list-style-type: none"> • Door knobs made of nylon • Door knobs made of stainless steel 	<ul style="list-style-type: none"> • Door knobs made of aluminium
Grip bars		<ul style="list-style-type: none"> • Grip bar GS 25, available lengths 400 mm and 800 mm • Grip bar GS 90, available length 700 mm 	<ul style="list-style-type: none"> • Grip bar GS 40, available lengths 430 mm (S), 1165 mm (M) and 1300 mm (L)
Lock	<ul style="list-style-type: none"> • 2-latch lock with metal latch and metal noise reducing catch 	<ul style="list-style-type: none"> • 1-latch lock 	
Further special features		<ul style="list-style-type: none"> • Modesty curtains • saniQub • Modesty screens 13 mm • Modesty partitions 	<ul style="list-style-type: none"> • Individual digital prints • BiColor
Compliance	<ul style="list-style-type: none"> • TÜV and GS (tested safety) certified 		

Subject to technical changes 11/2017

PRIMO F Planning aid

	Standard	Optionally available for a surcharge
WC cubicles	<ul style="list-style-type: none"> • WC cubicles with supporting legs and headrail in the front 	<ul style="list-style-type: none"> • Support optimised WC cubicles (supp. legs recessed, only for rows of cubicles) • WC cubicles without under panel clearance • Floating WC cubicles (supp. legs and head rail, only for rows of cubicles) • head rail, only for rows of cubicles)
Single cubicle	<ul style="list-style-type: none"> • Supp. legs and head rail in the front (recessed head rail not available) 	<ul style="list-style-type: none"> • Anteroom separation between WC area and hand wash area, also floor-to-ceiling
Cubicle height	<ul style="list-style-type: none"> • 2000 mm incl. 150 mm under panel clearance (-10 /+ 25 mm) • 2135 mm incl. 150 mm under panel clearance (-10 /+25 mm) 	<ul style="list-style-type: none"> • Special height on request, max. 2800 mm floor-to-ceiling closed, > 2100 mm with upper panel above the door, special heights available on request
Front panels (pilasters)	<ul style="list-style-type: none"> • 140 mm up to 1580 mm element width, can be individually planned 	
Cubicle depth	<ul style="list-style-type: none"> • Up to 1600 mm 	<ul style="list-style-type: none"> • Partitions larger than 1600 mm are provided with a tongue-and-groove joint and re-enforced with an additional supp. leg and head rail. In case of floor-to-ceiling construction the partition will be joint from 1200 mm
Panel and door material	<ul style="list-style-type: none"> • 30 mm thick solid grade laminate composite elements, 3 mm cover panel on both sides 	
Edge protection	<ul style="list-style-type: none"> • Solid synthetic frame 	
Door stop	<ul style="list-style-type: none"> • Rebated, inwards or outwards opening within one front available. Threaded, continuous rubber buffer for soft closing 	
Door clearance	<ul style="list-style-type: none"> • For cubicle height of 2135 mm: clear opening height 2093 mm 	<ul style="list-style-type: none"> • Max. 2130 mm for floor-to-ceiling doors
Door widths	<ul style="list-style-type: none"> • 570 mm (nominal size) • 650 mm (nominal size) standard • 750 mm (nominal size) • 980 mm (nominal size) 	<ul style="list-style-type: none"> • Special door widths available on request
Head rail	<ul style="list-style-type: none"> • 42 /43 mm, aluminium profile, anodised (E6EV1) 	<ul style="list-style-type: none"> • 40 x 30 mm above the front, stainless steel • 40 x 30 mm floating cubicles, stainless steel
Ceiling connection		<ul style="list-style-type: none"> • With aluminium profile 40 x 3 mm (in case of suspended ceilings, solid inlays required)
Supporting legs / floor connection	<ul style="list-style-type: none"> • Satin anodised aluminium supporting legs with stainless steel floor plate and aluminium cover sleeve, 150 mm under panel clearance, steplessly adjustable 	<ul style="list-style-type: none"> • Satin anodised aluminium supp. leg with individual height, with stainless steel foot plate and aluminium cover sleeve, 80 - 215 mm panel clearance • Without under panel clearance, with aluminium profile (shadow gap) and ventilation below the door with 30 mm gap • Stainless steel supporting leg with individual height with stainless steel cover sleeve, 80 – 215 mm under under panel clearance • Adhesive supporting legs (> 80 mm under panel clearance), not available for support-optimised construction
Upper panel		<ul style="list-style-type: none"> • Max. 1800 x 800 mm; in case of floor-to-ceiling construction with upper panel above the door
Upper glass		<ul style="list-style-type: none"> • Max. 1800 x 800 mm

Standard
Optionally available for a surcharge

Suspended cubicles		<ul style="list-style-type: none"> • carrier 50/150 mm • carrier 50/200 mm
Changing cubicles		<ul style="list-style-type: none"> • on supporting legs • suspended
Wall connection	<ul style="list-style-type: none"> • U-profile, satin anodised or powder-coated aluminium 	<ul style="list-style-type: none"> • U-profile, stainless steel • Shadow gap with aluminium profile satin anodised. In case of gypsum walls with additional angle
Corner cubicle connection	<ul style="list-style-type: none"> • corner profile aluminium satin anodised or powder-coated 	<ul style="list-style-type: none"> • Angular wall connection corner profile stainless steel
Angular wall connection		<ul style="list-style-type: none"> • U-profile and counter profile
Angular panel connection		<ul style="list-style-type: none"> • Aluminium profiles, internal U-channel, satin anodised
Hinges	<ul style="list-style-type: none"> • Three-roller edge hinge with spring, aluminium (145 mm) with stainless steel axis, screwed 6 times 	<ul style="list-style-type: none"> • Three-roller edge hinge with spring, aluminium (145 mm) with stainless steel axis, screwed 6 times
Finger protection		<ul style="list-style-type: none"> • pivot hinge, milled doors
Door handles / locking		<ul style="list-style-type: none"> • Aluminium door handle, L-shaped • Aluminium door handle, U-shaped • Stainless steel door handle, L-shaped • Stainless steel door handle, U-shaped • Nylon door handle, U-shaped and nylon turning bolt
Door knobs	<ul style="list-style-type: none"> • Door knobs made of nylon 	<ul style="list-style-type: none"> • Door knobs made of stainless steel • Door knobs made of aluminium
Grip bars		<ul style="list-style-type: none"> • Grip bar GS 25, available lengths 400 mm and 800 mm • Grip bar GS 90, available length 700 mm • Grip bar GS 40, available lengths 430 mm (S), 1165 mm (M) and 1300 mm (L)
Lock	<ul style="list-style-type: none"> • 1-latch lock 	<ul style="list-style-type: none"> • 2-latch lock with metal latch and metal noise reducing catch
Further special features		<ul style="list-style-type: none"> • Modesty curtains • Modesty screens 13 mm • Modesty partitions • Handicapped cubicles • Individual digital prints • BiColor
Compliance	<ul style="list-style-type: none"> • TÜV and GS (tested safety) certified 	

Subject to technical changes 11/2017

saniQub planning aid

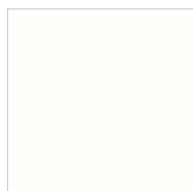
	Standard	Optionally available for a surcharge
Layout	<ul style="list-style-type: none"> Partitions for row of cubicles only, not available as door front 	
Cubicle depth	<ul style="list-style-type: none"> Standard 1500 mm, min. 1250 mm, max. 1600 mm 	
Cubicle height	<ul style="list-style-type: none"> 2000 - 2400 mm 	<ul style="list-style-type: none"> Special heights available on request
Panel element	<ul style="list-style-type: none"> 156 mm thick composite construction with 3 mm solid grade laminate HPL cover panels, polystyrene inlay and an aluminium frame 	
Supporting legs	<ul style="list-style-type: none"> Satin anodised aluminium supporting leg with 80 – 180 mm under panel clearance and aluminium cover sleeve 	<ul style="list-style-type: none"> Without under panel clearance, with aluminium profile
Wall connection without parapet walls	<ul style="list-style-type: none"> With shadow gap profile made of aluminium, satin anodised, joint approx. 10 mm 	
Wall connection with parapet walls		<ul style="list-style-type: none"> With parapet panel and shadow gap
Construction	<ul style="list-style-type: none"> Support optimised construction with recessed supporting leg, head rail in the front 	<ul style="list-style-type: none"> Floating construction with recessed supp. leg and head rail Supporting legs and head rail in the front
Accessories saniApps		
Double toilet paper roll holder	<ul style="list-style-type: none"> Stainless steel, with elegant, brushed matt surface, size 370 x 180 mm, suitable for KEMMLIT longlife toilet paper roll (900 sheet roll), integrated replacement roll, also suitable for standard paper rolls, with cylinder lock 	
Waste bins	<ul style="list-style-type: none"> Stainless steel, with elegant, brushed matt surface, door knob for easy access, capacity appr. 5 litre, size 370 x 180mm 	
Toilet brush sets	<ul style="list-style-type: none"> Stainless steel, with elegant, brushed matt surface, size 370 x 290 mm incl. toilet brush 	
Hygiene bag dispenser	<ul style="list-style-type: none"> For plastic bags, with elegant, brushed matt stainless steel surface, size 180 x 180 mm 	
Door stopper hook	<ul style="list-style-type: none"> Stainless steel, with elegant, brushed matt surface, size: 150 mm long, cover sleeve diameter 60 mm, hook diameter 15 mm 	
Accessories SystemApp M	<ul style="list-style-type: none"> System element made of stainless steel with elegant, brushed matt surface, size 388 x 705 mm, consisting of: Double toilet paper roll holder for commercial toilet paper, fragrance dispenser, toilet brush set made of stainless steel with brushed matt surface, waste dispenser with hygiene bag dispenser compartment 	
Accessories SystemApp L	<ul style="list-style-type: none"> System element made of stainless steel with elegant, brushed matt surface, size 388 x 900 mm, consisting of: Double toilet paper roll holder for commercial toilet paper, fragrance dispenser, toilet brush set made of stainless steel with brushed matt surface, waste dispenser with hygiene bag dispenser, disinfectant dispenser and deposit compartment 	

Subject to technical changes 11/2017

PRIMO colour concept

PRIMO is characterised by a **multitude** of colours and combination possibilities. The selection is nearly boundless. In addition to the standard colours shown, the panels and doors can be created in **PRIMO BiColor** with different colours on both sides. Also available on request are special **colours** and **individual digital prints**. The PRIMO colour concept also covers the partition wall system saniQub and of course, perfectly matches all other KEMMLIT products.

Panels and doors:



Traffic white 9317
similar to NCS S 0502-G50Y



Granite white 9317P



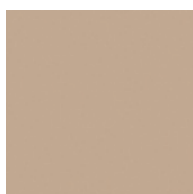
Light grey 7208
similar to NCS S 2500-N



Quartz grey 7708
similar to NCS S 5000-N



Graphite 7808
similar to NCS S 7502-B



Cappuccino 1117
similar to NCS S 3010-Y60R



Burano brown 8617
similar to NCS S 6010-Y30R



Corn Yellow 1708
similar to NCS S 1070-Y10R



Orange 2717
similar to NCS S 0570-Y40R



Tornado red 3508
similar to NCS S 0580-Y90R



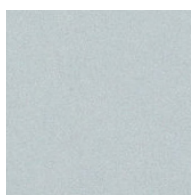
Garnet red 3708
similar to NCS S 3060-R



Pacific blue 5715
similar to NCS S 2060-R90B



Lagoon blue 5408
similar to NCS S 1030-R90B

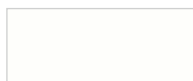


Silver 7408



Lemon green 6715
similar to NCS S 1060-G60Y

Profiles*, hinges, furniture, supporting legs and accessories:



White 02
similar to RAL 9016



Manhattan 05
similar to NCS 2801-Y36R



Anthracite 03
similar to RAL 7043



Dark blue 04
similar to RAL 5003



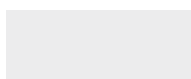
Red 11
similar to RAL 3003



Dark red 01
similar to RAL 3005



Yellow 10
similar to RAL 1023



Satin anodised 08¹
similar to E6 / EV1



Stainless steel V2A 12

Colour concept valid from 07/2017

* colours for PRIMO Kn head rails, U-profiles and corner profiles; panel and door profiles only available in satin anodised 08. The colours shown may slightly differ from the original colour due to typographic reasons. We would gladly advise you personally.



ON-TIME INSTALLATION

98% of all requested delivery
dates can be fulfilled



FASTEST PRODUCTION & INSTALLATION

Prompt and on-schedule
delivery



IMMEDIATE REPAIR

Immediate repair
when you need it



HIGHEST PRODUCT QUALITY

Top quality in terms of material and
processing



WE ARE IN YOUR VICINITY

Individual consulting service by
professional sales representatives



KEMMLIT UK | Bays Platt | Skirmett | Henley-on-Thames Oxfordshire RG9 6TD | United Kingdom
Tel.: +44 (0) 1491/638 606 | info@kemmlituk.com | kemmlituk.com