



Jaymart

Ingenius Synthetic Coir

Product Information

Designed for internal/ external sheltered areas. UV & rot resistant DDA/ wheelchair compliant synthetic coir polypropylene brush entrance matting/ foyer carpeting. Ideal for designs or logo mats. with a large range of colour options.

Description / Colours Available

Ingenius is a super effective extra heavy duty indoor/ outdoor polypropylene brush latex backed entrance matting and foyer carpeting. Ingenius will not absorb moisture, retaining its incredibly efficient dirt removal properties even when wet. Moisture is trapped below the walking surface of the mat, preventing ingress tracking.

Ingenius unlike coir matting is colourfast. This makes Ingenius an Ideal choice for logo and design mats. For very heavy duty of prestigious entrance Ingenius can be incorporated into aluminium channel section matting (Grime Grabber and Alligator Forefront).

DDA and wheelchair compliant matting



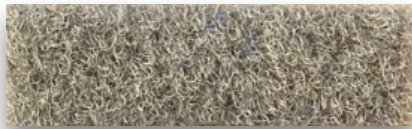
Black (00)



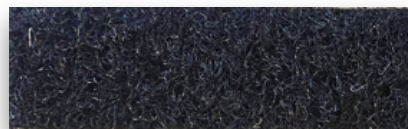
Slate (77)



Granite (27)



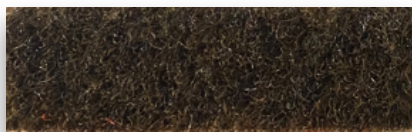
Grey (71)



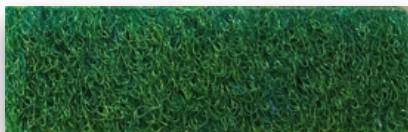
Navy Blue (36)



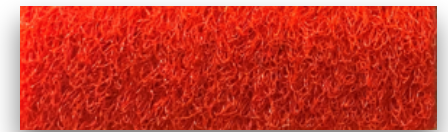
Bright Blue (34)



Brown (82)



Bright Green (21)



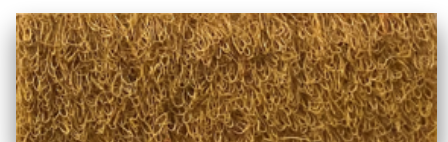
Bright Red (42)



Orange (99)



Yellow (98)



Tan (05)



Ingenius Complies with BS 8300 - 2:2018 for an inclusive and accessible environment

9mm
Gauge

Logo Mat / Design Mat Options Available

Ingenius

Ingenius can be incorporated into designs and logos and is UV and rot resistant.



Ingenius Specification

Ingenius Insert Specification

Manufacturing process

Needled pile floor covering ISO 2424

Surface Aspect

Dilour ISO 2424

Yarn Composition

100% Polypropylene

Backing

Latex ISO 2424

Pile Weight

1000g/m²

Total Weight

1900g/m² +/- 10% ISO 8543

Pile Height

4mm ISO 1766

Total Height

9mm + 15%/- 10% ISO 1765

Luxury Class

LC2 EN 1307

Colour fastness to light

> 5 ISO 105-B02

Colour fastness to rubbing, wet and dry

>4 ISO 105-X12

Colour fastness to water

>4 ISO 105-EO1

Colour fastness to soiling

>3 EN 1269

Dimensional Stability

Shrinkage < 1.2% ISO 2551

Extension < 5% ISO 2551

Electrostatic Charging

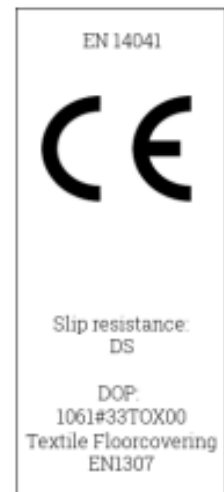
< 2KV ISO 6356

Slip Resistance

DS (>0,30) EN 13893

Flamability

Efl EN 13501 -1



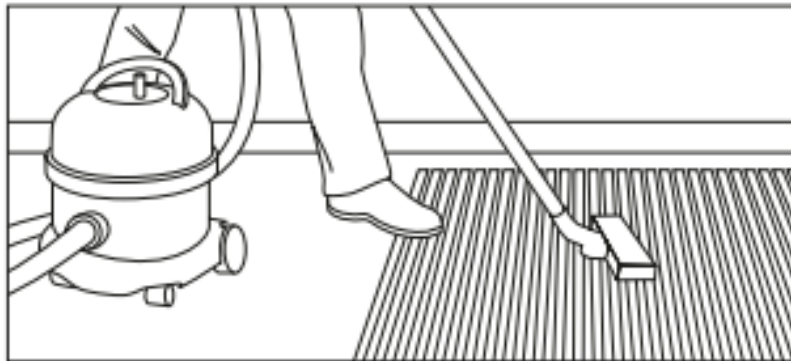
Ingenius Installation, Cleaning & Maintenance

Installation

Ideally fully adhered to dry, smooth sub-floors with approved adhesive but can be loose laid if necessary in matwells or as protective runners. Easily cut to size without fraying.

Maintenance

We recommend daily vacuuming with suction attachment for best appearance retention and longer working life.



For periodic maintenance the best results can be achieved by the periodic use of a spray or dry extraction carpet cleaning machine, or where possible by the removal of the matting for pressure washing or steam cleaning.

The use of a mild detergent (neutral pH) cleaning solution in the carpet cleaning machine should loosen ingrained soiling and aid the removal of oils and grease.



More stubborn stains should be treated with a solvent based spot remover prior to re-cleaning with the detergent solution.

Chewing gum can be removed by freeze spraying or with a proprietary chewing gum remover and then scraped or combed out of the matting carpet pile. This should be done before the full cleaning process is started.



Our 4 step process to a cleaner environment

Step 1

The best way to keep your premises clean is to stop dirt from even getting through the front door. Effective exterior matting scrapes clean and wipes dry, leaving the worst dirt and grit outside, and allowing subsequent interior matting to clean even better.

Step 2

Working in a similar way to exterior matting, this is similarly tough and durable matting that carries on the work to remove the last of the most damaging soil and grit, and continue the drying process.

Step 3

With the worst of the damp and debris now dealt with, secondary internal matting is a high-specification, high-performance product that finishes the dusting and drying.

Step 4

The foyer is one of the highest traffic areas in your building so, however effective your entrance matting, easy to clean, highly durable and attractive carpet that always looks its best will help you make a great first impression – every time.

Environmental Impact/ Responsibility

Our Products Use 100% recycled Aluminium and can be recycled after use making our aluminium mat products very environmentally friendly. This combined with the ability to replace the insert material rather than replacing the whole mat, means that although not directly eligible for BREEAM Credits selecting Jaymart will help in supporting your BREEAM certification.

We Manufacture in the United Kingdom to precise specifications/ measurements. This means Jaymart can reduce waste and transport.

Our products are extremely Hardwearing and will reduce the need for frequent replacement to support BREEAM MAT 05 criteria and also minimise the use of harmful cleaning chemicals and cleaning/ maintenance costs for the end user.

BREEAM MAT 01 addresses the environmental impact through the lifecycle of the product. The Jaymart aluminium entrance matting system have the ability to refurbish rather than replace means that our products can further support your aims. It will also help with meeting BREEAM MAT 06 requirements. We can also offer products made from natural inserts from sustainable sources to further meet environmental aims. The expected useful lifespan when refurbished is 30 years approximately dependent on wear and correct maintenance being carried out.



Proudly Manufactured in The UK



100% Recycled Aluminium





Jaymart

**Jaymart Rubber & Plastics
Limited**

**Roman Way, Crusader
Park,**

Warminster

BA12 8SP

Tel 01985 218994

Email: sales@jaymart.co.uk

www.jaymart.co.uk