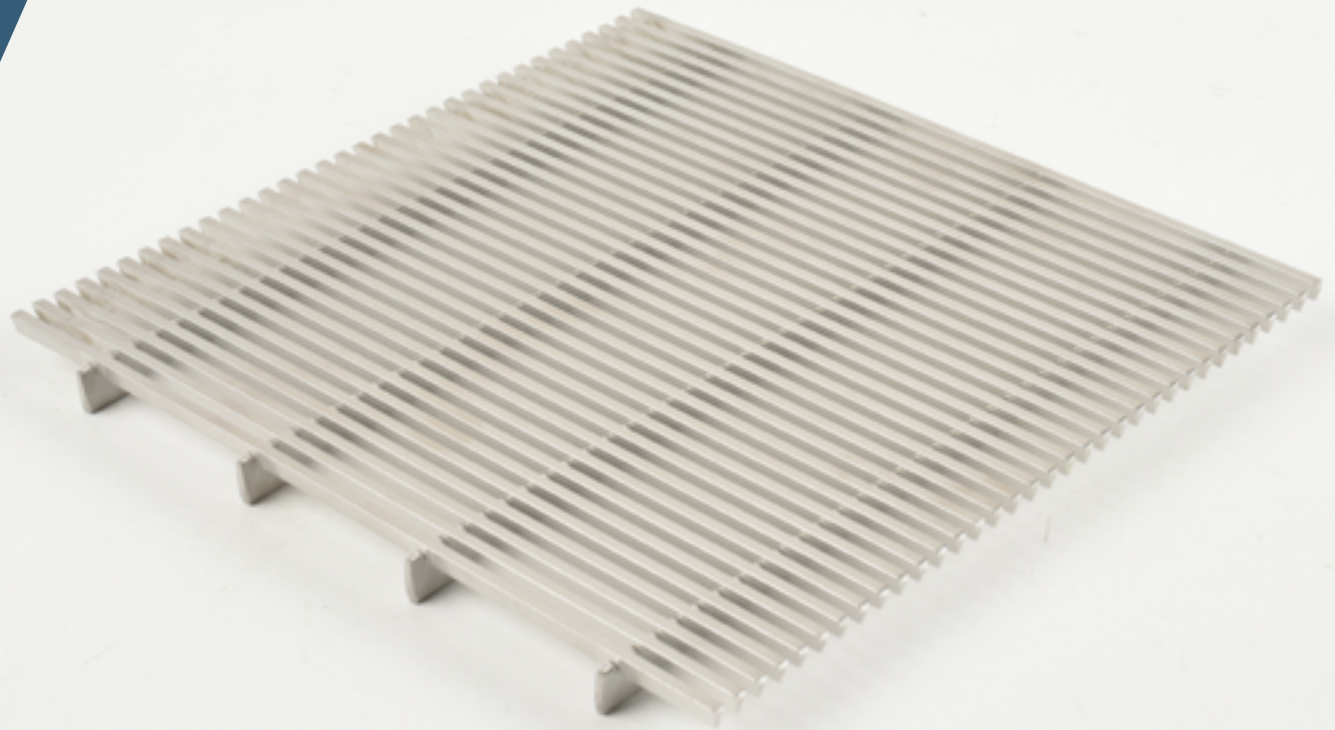


INTR.
SYSTEMS

ARCHITECTURAL GRILLES

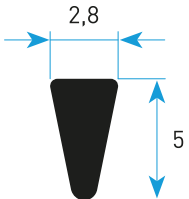
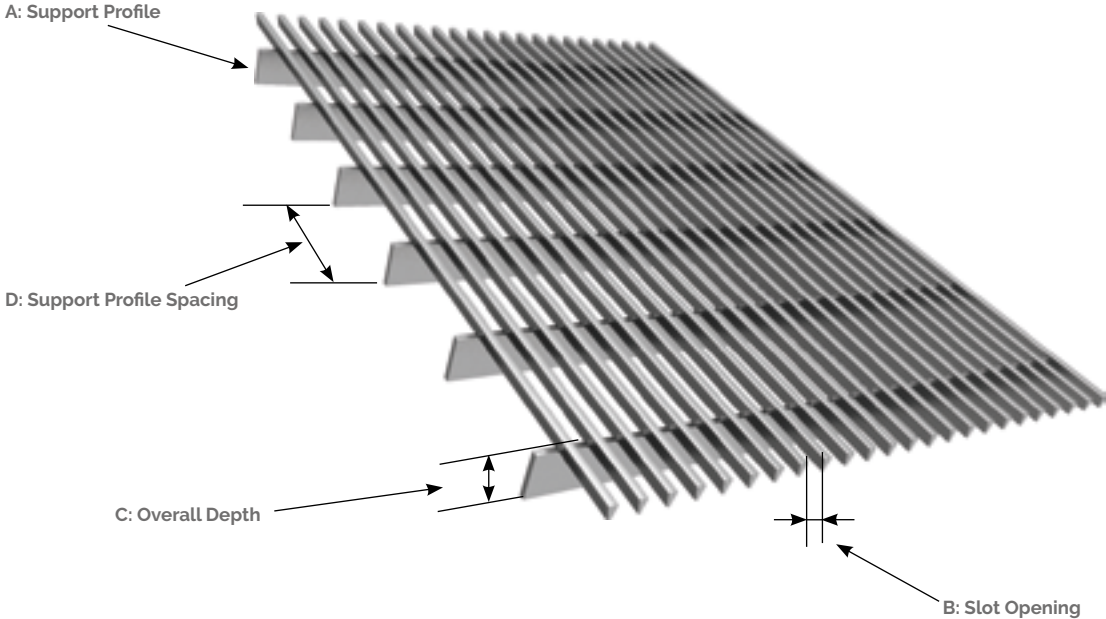
INTRAgrille T2850

- Trench heating covers
- Service trench covers
- Architectural features
- Facades & solar shading
- Balustrades & soffits
- Entrance grilles
- Ventilation



Product shown: INTRAgrille T2850 10x2 stainless steel

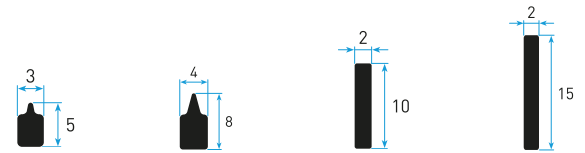
PROFILE T2850



unit of measurement: [mm]
scale: 2,5: 1

SPECIFICATIONS

Product Reference:	INTRAGrille T2850
Support Profile:	5x3, 8x4, 10x2, 15x2
Support Profile spacing:	50mm (other options available)
Slot Opening:	>3mm constant, alternating or increasing (see pp26-27)
Open Area:	52% based on 3mm slot opening
Finish Options:	Pickled & Passivated, Electropolished, Powder Coated, Shot Peened



A	Support Profile	5 x 3	8 x 4	10 x 2	15 x 2
	Material	Stainless steel	Stainless steel	Stainless steel	Stainless steel
B	Slot Opening	3mm	3mm	3mm	3mm
C	Overall Depth	7.5mm	11.5mm	13.5mm	18.5mm
D	Support Profile Spacing	50mm	50mm	50mm	50mm
	Weight kg/m ² *	14.9	16.8	16.2	17.8
	Typical max span**	n/a	n/a	300mm	500mm

* Based on 3mm slot opening
** For heavy pedestrian traffic

FINISHES



Pickling & Passivation

Pickling - the most efficient and economical way to clean stainless steel surfaces of residuals that can lead to corrosion. Pickling improves the appearance of the surface: smoothing out scratches and sharp edges and removing stains from welding and cutting points.

Passivation - creates a thin oxide layer on the surface to increase resistance to chemical agents and passivity to weather conditions.



Powder Coating

Powder coating is the process of applying particles of powder paint to the surface of carbon steel to provide a coating that is resistant to corrosion, chemicals, heat and mechanical damage. Coatings can be made in **any RAL colour**. Special paint finishes are also available including certified antibacterial and abrasion resistant.



Electropolishing

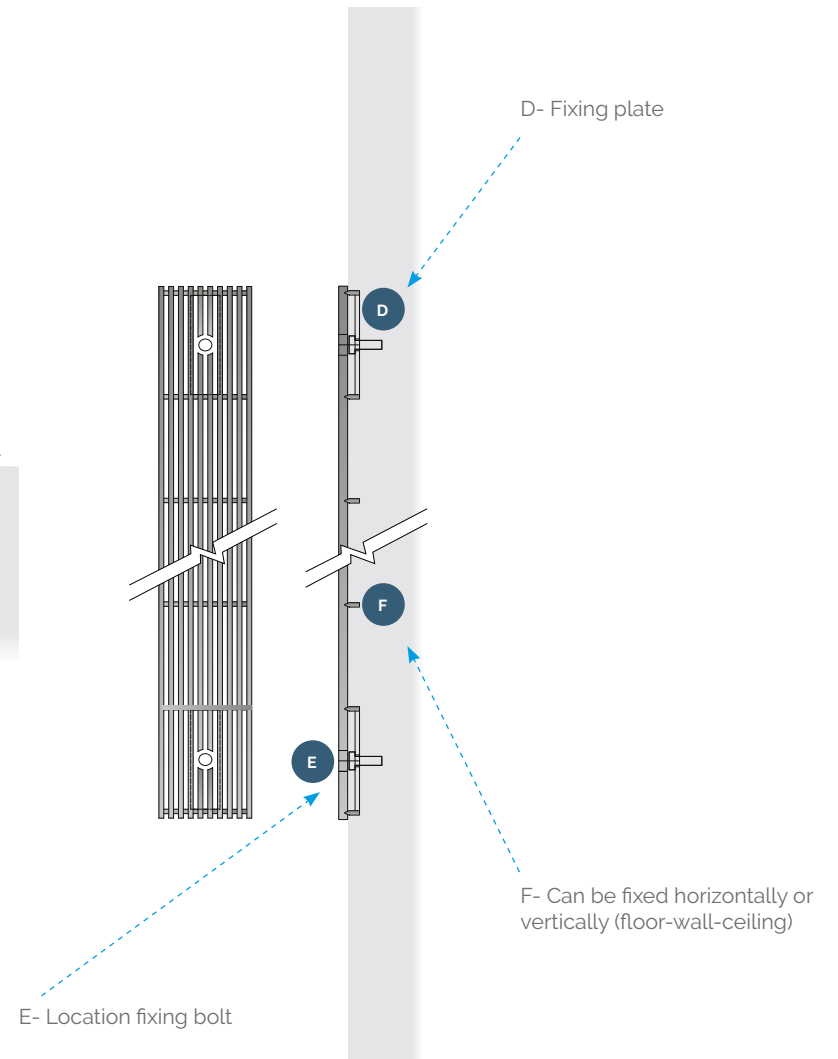
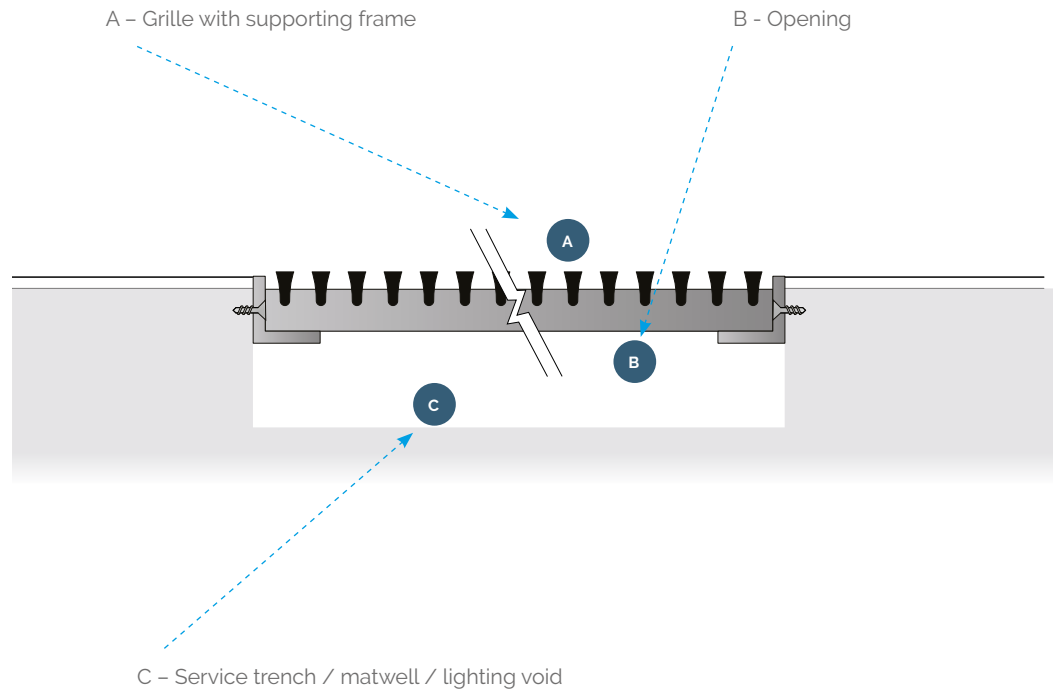
Electropolishing is used to smooth and polish the surface of stainless steel and provide additional protection against corrosion. The process improves the aesthetic appearance and makes the finished product easier to keep clean.



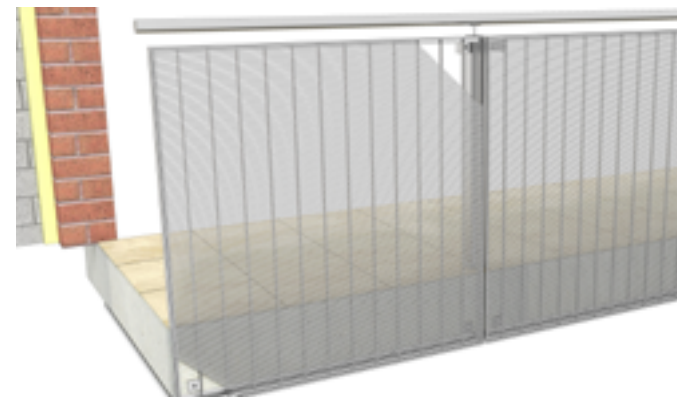
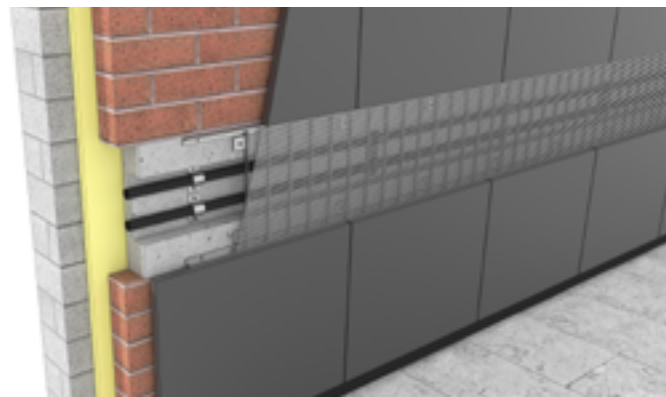
Shot Peening

Shot Peening involves bombarding the surface of stainless steel with steel or glass balls to achieve different degrees of slip resistance.

FIXINGS



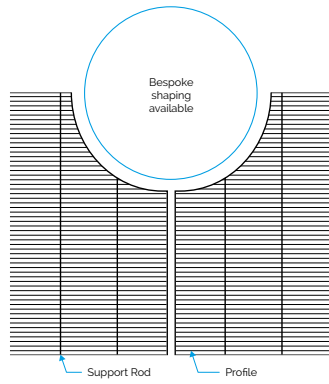
Hinged, framed and bespoke fixings available.



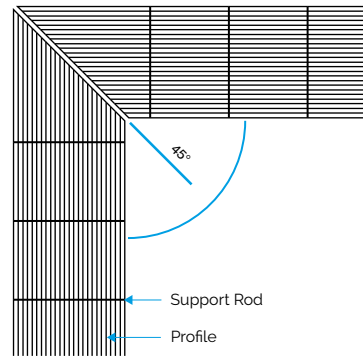
CONFIGURATION OPTIONS

Grilles can be made to nearly any shape and format to suit your projects.

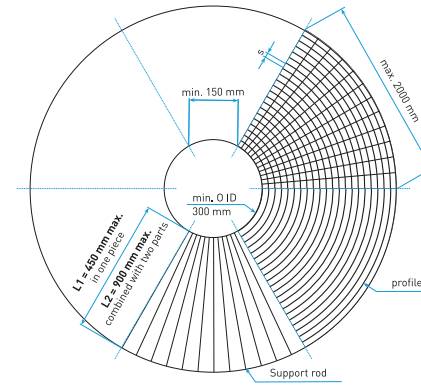
Shaping



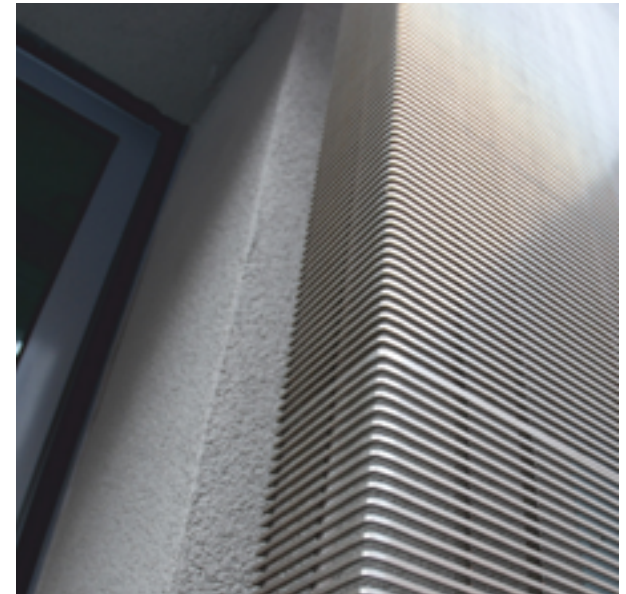
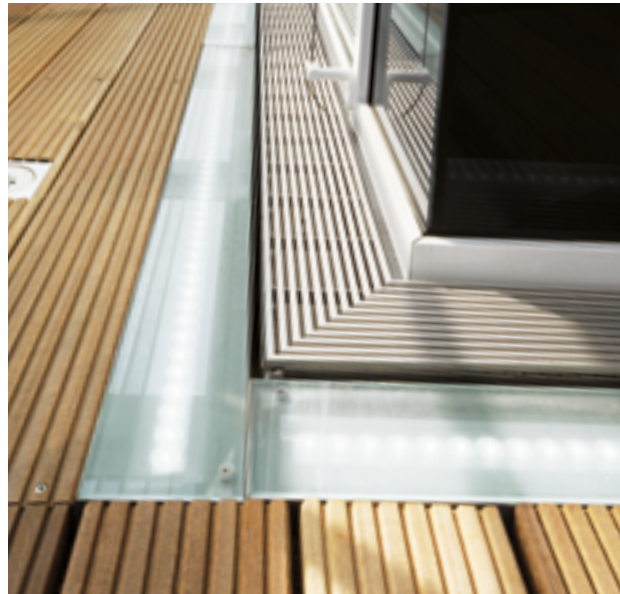
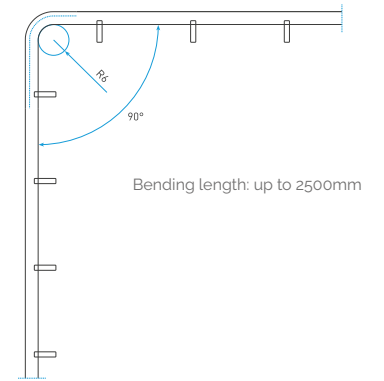
Corner Grilles



Radial Grilles



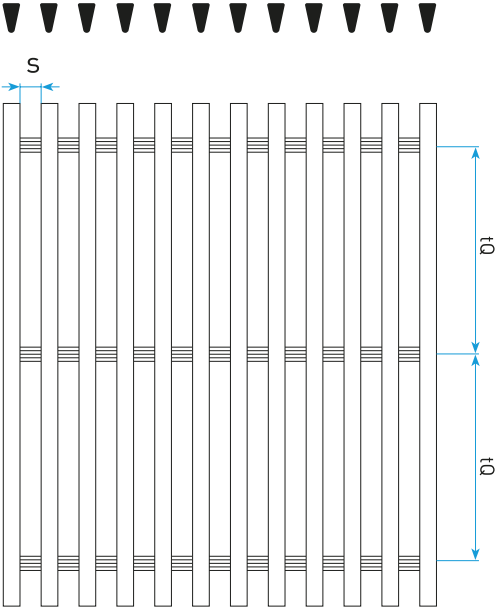
Bending in the vertical plane



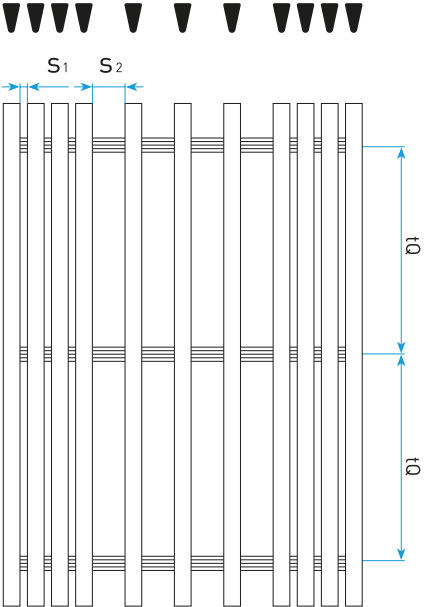
SLOT OPENING

Slot size can be varied within a single grid with options for constant, increasing or alternating spacing to control the degree of screening and airflow

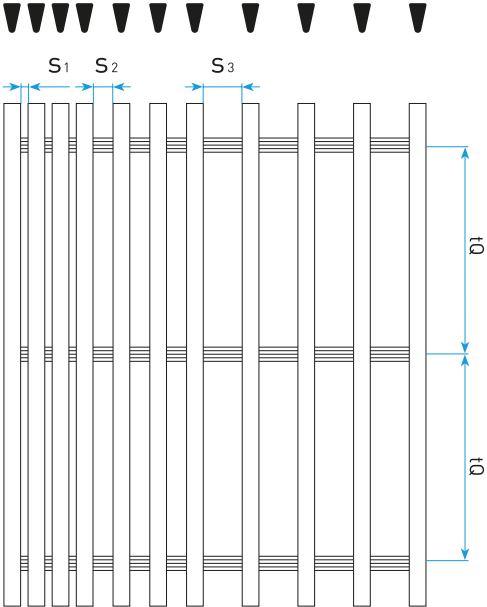
Profile configuration with constant slot opening



Profile configuration with alternating bigger and smaller slots



Profile configuration with increasing slot opening



S = Slot spacing
tQ = Variable support profile spacing

DRAINAGE OPTIONS

Please contact us to specify details such as overall length, width, outlet type and location.

- Options available to suit a wide variety of applications
- Adjustable feet to suit drainage falls
- Suitable for internal and external applications

