



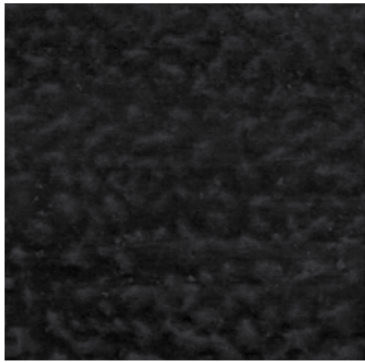
Jaymart

Rubber Flooring Systems

**Hammerlock
Uni & Terrazzo
Rubber Flooring
Colours &
Technical
Information**

HAMMERLOCK UNI

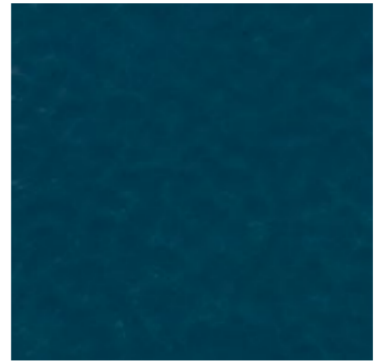
Lastre in gomma autoposanti ad incastro con superficie martellata tinta unita.
Loose-laying interlocking solid colour rubber tiles with hammered surface.



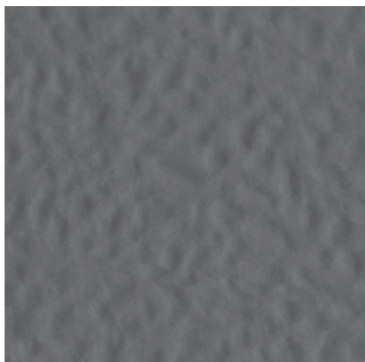
EN 21



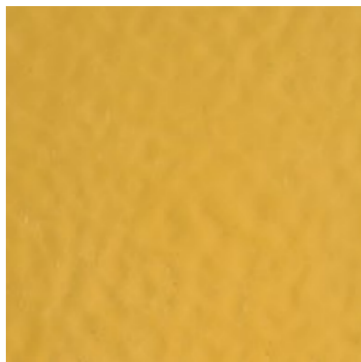
ER 75



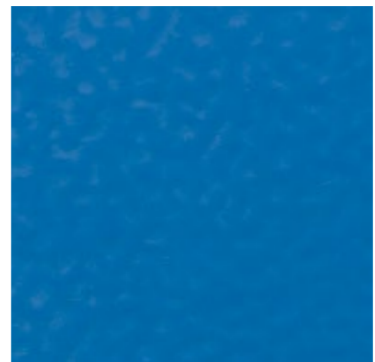
EB 09



EG 06



EY 78



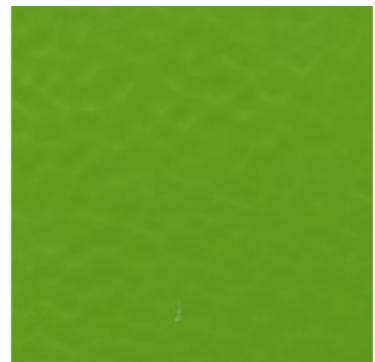
EB 51



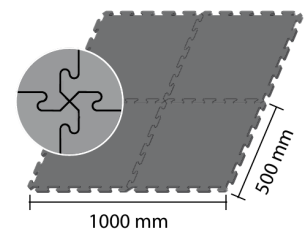
EG 04



EM 22

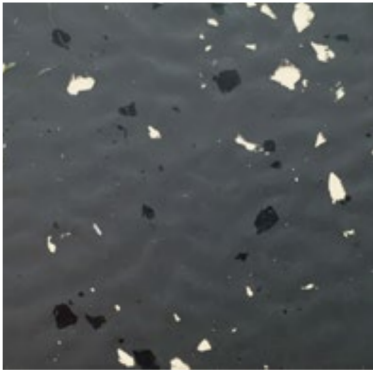


EV 44

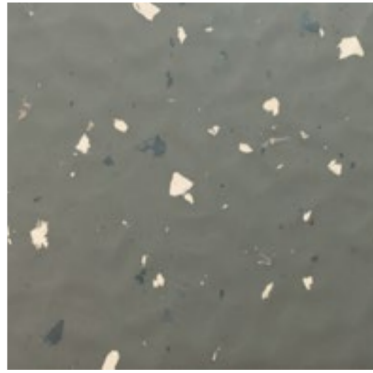


HAMMERLOCK TERRAZZO

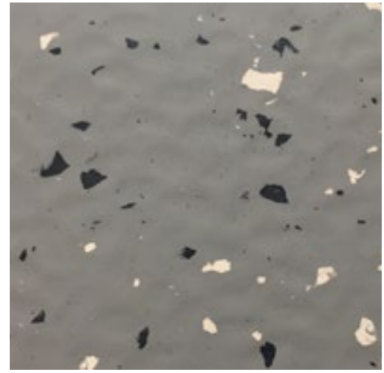
Lastre in gomma autospanti ad incastro con superficie martellata, multicolore.
Loose-laying interlocking rubber tiles with hammered multicoloured surface for heavy traffic.



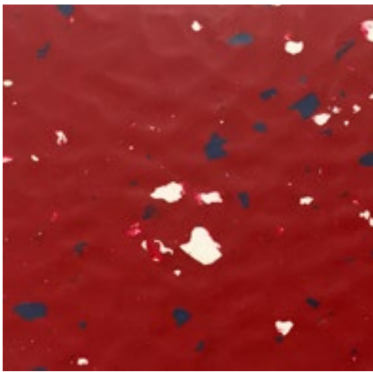
ID 32



ID 110



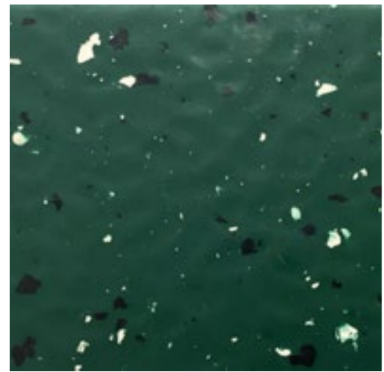
ID 13



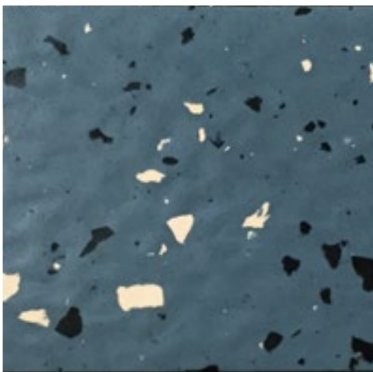
ID 30



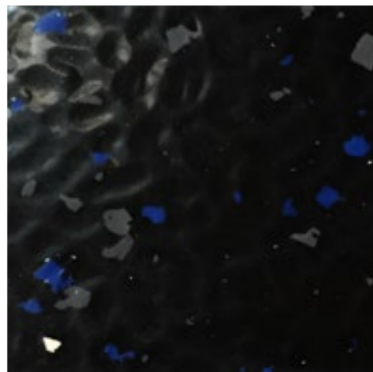
ID 103



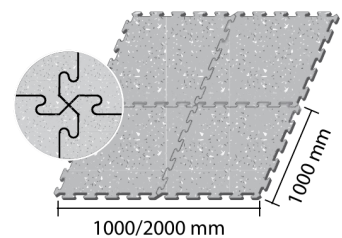
ID 144



ID 20



ID 21



Proprietà secondo EN 1817/EN 14 041 <i>Properties according to EN 1817/EN 14 041</i>	Norma di prova <i>Test method</i>	U.m. & Requisiti <i>U.m. & Requirements</i>	HAMMERLOCK Uni	HAMMERLOCK Terrazzo
			Valori medi risultati da collaudi della produzione in corso <i>Average test results from running production</i>	
Spessore <i>Thickness</i>	UNI EN ISO 24346 (Ex. EN 428)	Valore medio $\pm 0,20$ mm valore nominale EN 12 199	5,0 mm	8,0 mm
Durezza <i>Hardness</i>	UNI EN ISO 7619-1	≥ 70 Shore A	88 ± 3	
Resistenza all'abrasione a 5 N di carico <i>Abrasion resistance at 5 N load</i>	ISO 4649 Procedura A <i>Procedure A</i>	≤ 250 mm ³	160 mm ³	
Impronta residua <i>Residual indentation</i>	UNI EN ISO 24343 (Ex. EN 433)	Valore medio $\leq 0,20$ mm a spessore $\leq 3,0$ mm <i>Mean Value $\leq 0,20$ mm at thickness $\leq 3,0$ mm</i>	0,15 mm	0,20 mm
Stabilità dimensionale <i>Dimensional stability</i>	UNI EN ISO 23999 (Ex. EN 434)	$\pm 0,4\%$	$\pm 0,3\%$	
Flessibilità <i>Flexibility</i>	UNI EN ISO 24344 (Ex. EN 435 Procedura A - Procedure A)	Diametro del mandrino 20 mm nessuna formazione di fessura <i>Mandrel diameter 20 mm no fissuring</i>	Conforme <i>Fulfilled</i>	
Resistenza alla brace di sigaretta <i>Cigarette-burn resistance</i>	EN 1399 Procedura A - B <i>Procedure A - B</i>	Procedura A [espulso] \geq livello 4 Procedura B [in fiamme] \geq livello 3 Procedura A [stubbed out] level ≥ 4 Procedura B [burning] level ≥ 3	Conforme <i>Fulfilled</i>	
Solidità dei colori alla luce artificiale <i>Color fastness to artificial light</i>	ISO 105-B02 Procedura 3 <i>Procedure 3</i>	Almeno 6 sulla scala del blu: \geq livello 3 sulla scala del grigio (= 350 MJ/m ²) <i>At least level 6 on the blue scale; \geq level 3 on the grey scale (= 350 MJ/m²)</i>	Conforme <i>Fulfilled</i>	
Tossicità fumi <i>Smoke toxicity</i>	BS 6853 Ann. B.2	≤ 5 R	Conforme <i>Fulfilled</i>	
Resistenza alla trasmissione del calore <i>Thermal conductivity</i>	DIN 52 612	-	0,03 m ² K/W	
Resistenza allo scivolamento su rampa <i>Ramp slip resistance</i>	DIN 51 130	Conferma a BGR 181 <i>According BGR 181</i>	≥ 6 (R9)	
Reazione alle sostanze chimiche <i>Effect of chemicals</i>	UNI EN ISO 26987 (Ex. EN 423)	-	Dipende dalla concentrazione e dal tempo d'azione <i>Resistant depending on concentration and time of exposure</i>	
Fattore di correzione del rumore da calpestio <i>Improvement in footfall sound absorption</i>	UNI EN ISO 10140-3 (Ex. ISO 140 - 8)	-	16 dB	20 dB
Proprietà elettro-isolante <i>Electrical insulation properties</i>	IEC 60093, VDE 0303 T.30	-	$> 10^{10}$ Ohm	
Carica elettrostatica da calpestio <i>Electrical propensity when walked upon</i>	EN 1815	-	Antistatico, carica elettrostatica in caso di soles in gomma ≤ 2 KV <i>Antistatic - charging in case of rubber soles ≤ 2 KV</i>	
Effetto sedia a rotelle <i>Effect of a castor chair</i>	EN 425	-	Prova di rulli, tipo W, conformi alla norma EN 12 529 <i>Suitable if castor wheels, type W, according to EN 12 529 are used</i>	
Resistenza allo scivolamento <i>Slip resistance</i>	EN 13 893	$\geq 0,30$ DS	DS	
Classe antincendio <i>Reaction to fire</i>	EN 13 501 - 1	-	Bfl - s1	
Resistenza alla lacerazione <i>Tear strenght</i>	ISO 34-1 procedura B, metodo A <i>procedure B, method A</i>	Valore medio ≥ 20 N/mm <i>Mean value ≥ 20 N/mm</i>	-	

I DATI TECNICI POSSONO ESSERE SOGGETTI A MODIFICHE SENZA PREAVVISO
TECHNICAL DATA ARE SUBJECT TO CHANGE WITHOUT NOTICE

EN 1817 Pavimenti di gomma lisci omogenei ed eterogenei
EN 1817 Specification for homogeneous and heterogeneous smooth rubber floor coverings

 500x500mm  5,0 mm  kg/m² 8,00



 1000x1000mm  5,0 mm  kg/m² 8,00

 1000x1000mm  8,0 mm  kg/m² 12,40





Jaymart



**Jaymart Rubber &
Plastics Limited**
**Roman Way, Crusader
Park,**
Warminster
BA12 8SP

Tel 01985 218994
Email:
sales@jaymart.co.uk
www.jaymart.co.uk