



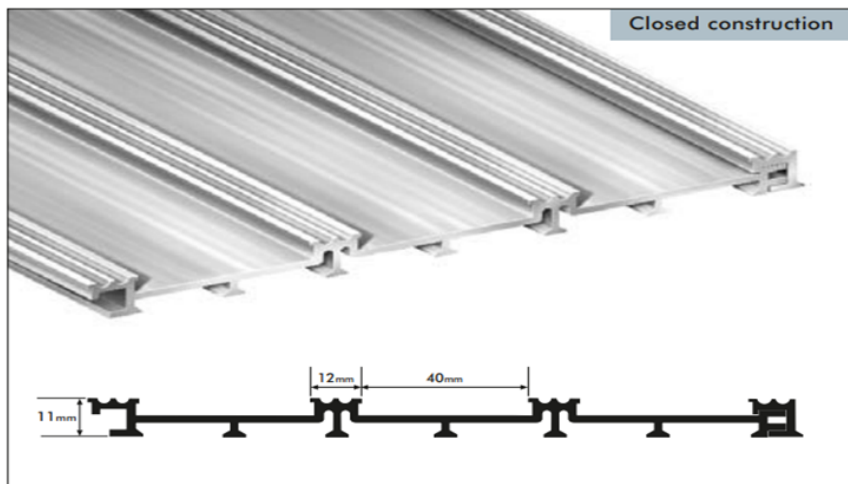
Jaymart



**Grime Design  
Aluminium  
Entrance  
Matting  
Information &  
Specification**

Designed for moisture absorbency and optimal resistance to draw of dirt and moisture with the ability to incorporate the most complex of designs to help make a feature of an entrance whilst helping to reduce dirt and moisture ingressing into the building. For Internal applications.

# Grime Design Aluminium Entrance Matting System



## Description

A matting consisting of strips of very heavy duty high definition injection dyed Nylon design carpeting secured between rigid silver aluminium scraper bars. Designed for indoor use in shops, public buildings, schools, offices, hotels, leisure centres, train stations, bus stations and hospitals.

The matting can be supplied in virtually any size or shape but, for reasons of safe handling, it is recommended that mat sections, which can be butted together, do not exceed 2m<sup>2</sup>

The Panels interconnect on the front and back panel, the panels on the left to right can make up required by butting panels side by side. The Jaymart system allows for perfect rib alignment without the need for T Bars.

Grime Design is 14 mm thick and available to incorporate complex designs.

Consult Jaymart Rubber & Plastics Ltd technical literature for details of the finishes available.

Jaymart Rubber & Plastics Ltd can also provide a design and specification service and it is recommended that they be consulted early in the design process.



Proudly Manufactured in The UK



100% Econyl Recycled Nylon Yarn



100% Recycled Aluminium



Grime Raincheck Complies with BS 8300 - 2:2018 for an inclusive and accessible environment

Wheel Chair Friendly

14mm  
Gauge



#### Key Features

They trap up to 90% of dirt and moisture, therefore reducing cleaning costs and use of harmful cleaning chemicals

They help to protect the expensive floor finishes reducing the amount sent to landfill.

The panel construction, which allows for rib alignment between panels, renders them stronger than wired construction types which can snap or bend. This also facilitates replacement of insert strips in the unlikely event of damage or desire to change colour scheme. Leading to a useful lifespan of 30 years when refurbished.

This also allows for more elaborate designs to be incorporated if required.

The Insert materials can be customised to maximise performance of the product and if required to make a statement upon entering the building.

Logos can easily be incorporated into the mat at very reasonable costs.

They can be surface mounted or installed in a recessed matwell.

The mats incorporate 100% Recycled Aluminium and are also easy to recycle after useful life, and so are an environmentally friendly product.

Now can be anodised in colours including antique bronze and black.

10 year warranty.





# Our 4 step process to a cleaner environment

## Step 1

The best way to keep your premises clean is to stop dirt from even getting through the front door. Effective exterior matting scrapes clean and wipes dry, leaving the worst dirt and grit outside, and allowing subsequent interior matting to clean even better.

## Step 2

Working in a similar way to exterior matting, this is similarly tough and durable matting that carries on the work to remove the last of the most damaging soil and grit, and continue the drying process.

## Step 3

With the worst of the damp and debris now dealt with, secondary internal matting is a high-specification, high-performance product that finishes the dusting and drying.

## Step 4

The foyer is one of the highest traffic areas in your building so, however effective your entrance matting, easy to clean, highly durable and attractive carpet that always looks its best will help you make a great first impression – every time.

## Environmental Impact & Sustainability

Our Products Use 100% recycled aluminium and can be recycled after use making our aluminium mat products very environmentally friendly. This combined with the ability to replace the insert material rather than replacing the whole mat, means that although not directly eligible for BREEAM Credits selecting Jaymart will help in supporting your BREEAM certification.

We manufacture in the United Kingdom to precise specifications/ measurements. This means Jaymart can reduce waste and transport.

Our products are extremely Hard wearing and will reduce the need for frequent replacement to support BREEAM MAT 05 criteria and also minimise the use of harmful cleaning chemicals and cleaning/ maintenance costs for the end user.

BREEAM MAT 01 addresses the environmental impact through the life cycle of the product. The Jaymart aluminium entrance matting system have the ability to refurbish rather than replace means that our products can further support your aims. It will also help with meeting BREEAM MAT 06 requirements. We can also offer products made from natural inserts from sustainable sources to further meet environmental aims. The expected useful lifespan when refurbished is 30 years approximately dependent on wear and correct maintenance being carried out.



Manufactured in United Kingdom



100% Recycled Aluminium



100% Econyl Recycled Nylon Yarn



# Grime Design Specification

## Typical Specification

N10

General Fixtures/ Furnishings/ Equipment

300

Entrance Matting

40

Miscellaneous Fittings

## Application

Internal High Traffic Areas **(Step 2)**

DDA Compliant can be used in conjunction with wheelchairs and shopping trolleys.

Closed Construction Heel Safe

## Aluminium Finishes Available

Standard Mill Finish & Anodised Finishes (Special Order)

## Composition

Made from 100% Recycled Aluminium

## Thickness/ Depth

14 mm

## Weight

12 Kg per m<sup>2</sup>

## Construction

Closed Interlocking Panel System

## Pile Type

Heavy duty high definition injection dyed 100% Nylon design carpeting

## Warranty/ Guarantee

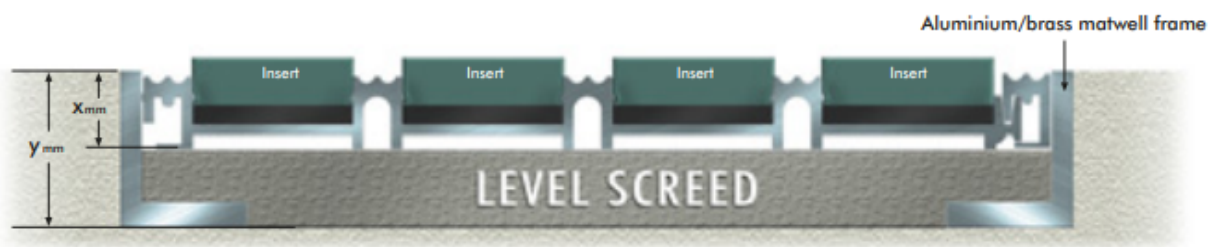
10 Year Subject to correct Maintenance and Cleaning procedures being carried out

## Slip Rating

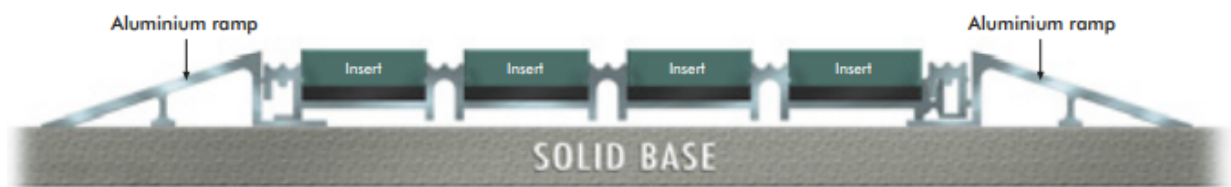
>PTV 36

## Installation Options

### Recessed Installation



### Surface Installation



---

### Manufacturer

Jaymart Rubber & Plastics Ltd

Roman Way Crusader Park Warminster Wiltshire BA12 BSP

Tel: 01985 218994 Fax: 01985 217417

email : sales@jaymart.co.uk Web: www.jaymart.co.uk

## Recessed Matwell Format

Symphony mats can also be supplied with an extra thick 3mm rubber backing for matwell use. These mats would not have anti-trip edges and the maximum matwell size is 5.9m x 1.85cm





# Examples





HD221



HD216



HD211



HD206



HD201



HD222



HD217



HD212



HD207



HD202



HD223



HD218



HD213



HD208



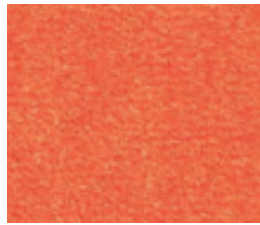
HD203



HD224



HD219



HD214



HD209



HD204



HD225



HD220



HD215



HD210



HD205

## HD 201 - 225

Colours are approximations only - please request samples for confirmation



HD226



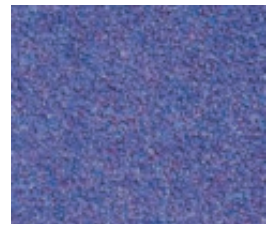
HD231



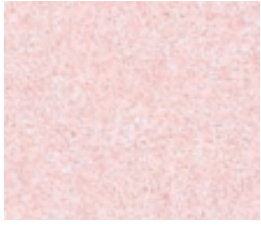
HD236



HD241



HD246



HD227



HD232



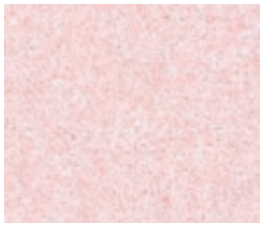
HD237



HD242



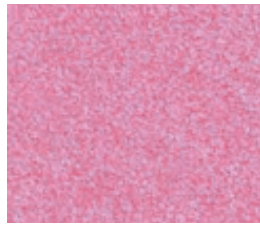
HD247



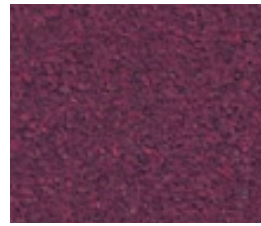
HD228



HD233



HD238



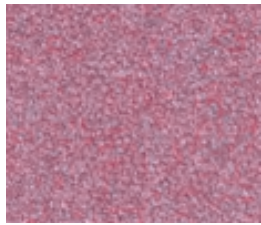
HD243



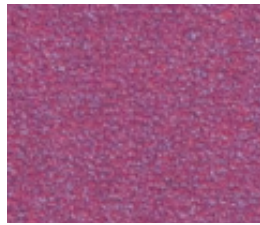
HD248



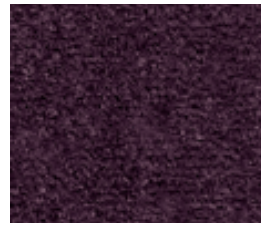
HD229



HD234



HD239



HD244



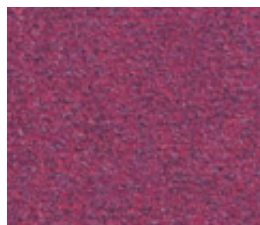
HD249



HD230



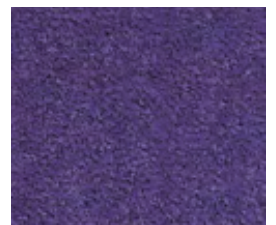
HD235



HD240



HD245



HD250

## HD 226 - 250

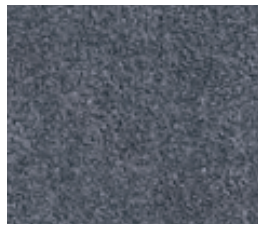
Colours are approximations only - please request samples for confirmation



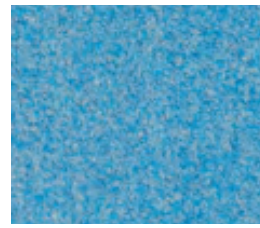
HD251



HD256



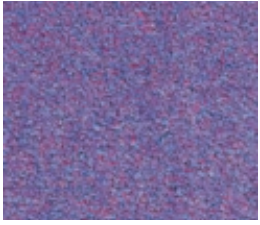
HD261



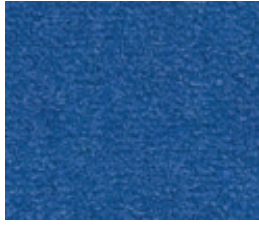
HD266



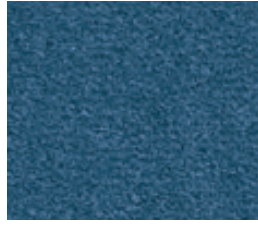
HD271



HD252



HD257



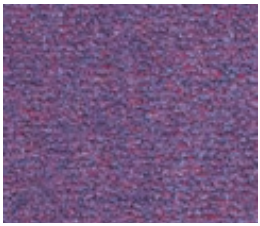
HD262



HD267



HD272



HD253



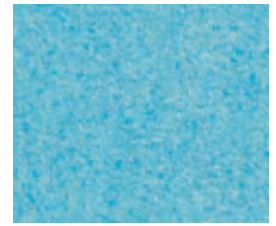
HD258



HD263



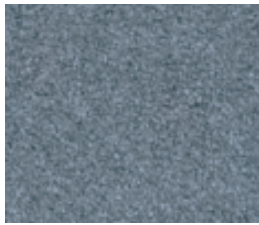
HD270



HD273



HD254



HD259



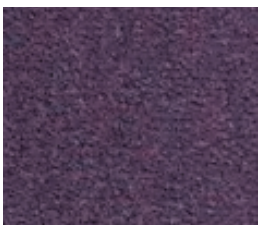
HD264



HD268



HD274



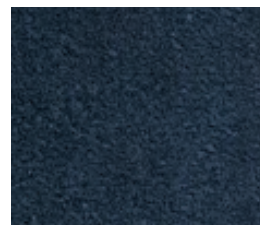
HD255



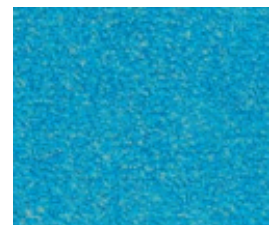
HD260



HD265



HD269



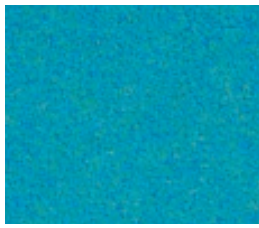
HD275

## HD 251 - 275

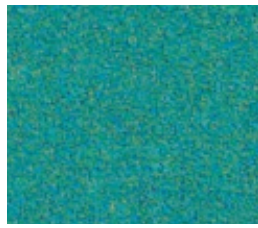
Colours are approximations only - please request samples for confirmation



HD276



HD281



HD286



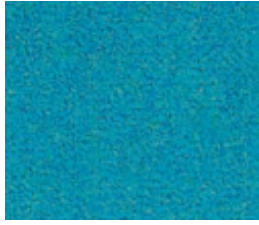
HD291



HD296



HD277



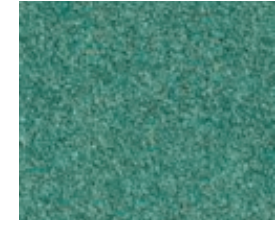
HD282



HD287



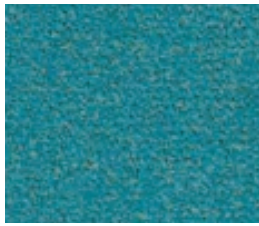
HD292



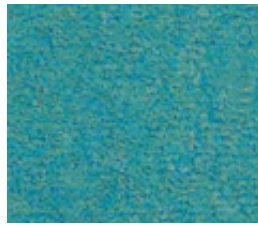
HD297



HD278



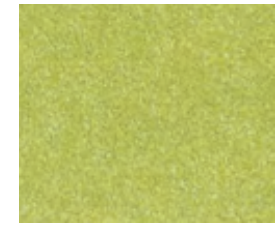
HD283



HD288



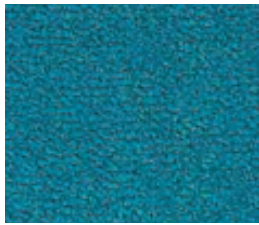
HD293



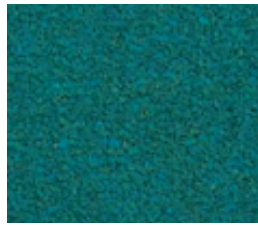
HD298



HD279



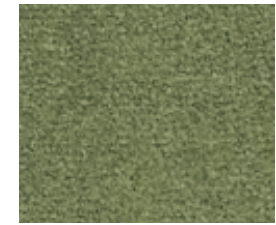
HD284



HD289



HD294



HD299



HD280



HD285



HD290



HD295



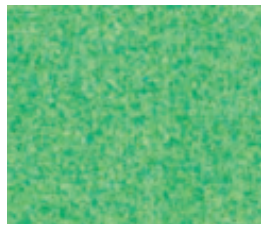
HD300

## HD 276 - 300

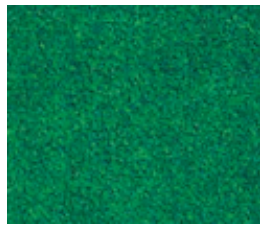
Colours are approximations only - please request samples for confirmation



HD301



HD306



HD311



HD316



HD321



HD302



HD307



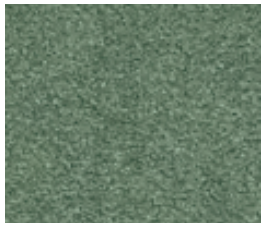
HD312



HD317



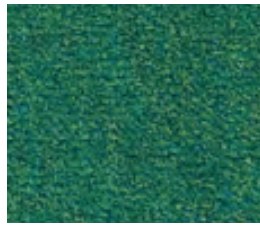
HD322



HD303



HD308



HD313



HD318



HD323



HD304



HD309



HD314



HD319



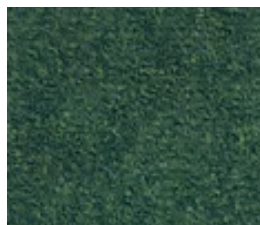
HD324



HD305



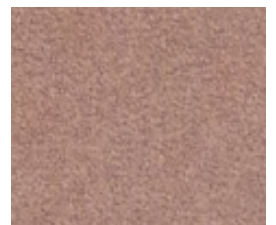
HD310



HD315



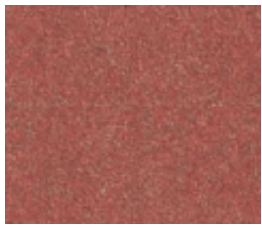
HD320



HD325

## HD 301 - 325

Colours are approximations only - please request samples for confirmation



HD326



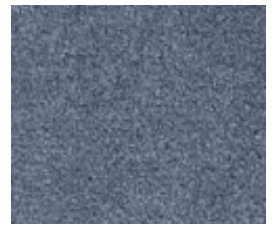
HD331



HD336



HD341



HD346



HD327



HD332



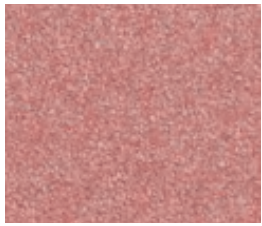
HD337



HD342



HD347



HD328



HD333



HD338



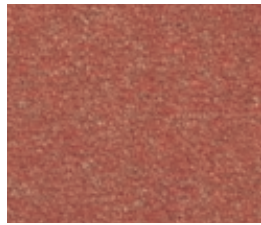
HD343



HD348



HD329



HD334



HD314



HD344



HD349



HD330



HD335



HD340



HD345



HD350

## HD 326 - 350

Colours are approximations only - please request samples for confirmation

# Symphony Technical Specifications

## Product Construction

HD Printed Tufted Cut Pile 100% Heat Set Nylon 6.6 for improved wear and appearance with 100% Nitrile Rubber Backing

## Fabric Weight (ca)

975 gms/ m<sup>2</sup>

## Total Weight (ca)

2560 gms/ m<sup>2</sup>

## Pile Height

### **Looselay Mats**

8mm

Border Thickness 2.1mm (looselay mats only)

### **Recessed Mats**

11mm (8mm plus 3mm Rubber backing)

### **Grime Design Aluminium mat System**

14mm

## Fire Classification

Ca - S1 (Test EN ISO 13501)

## Electrical Behavior

Antistatic (Test EN ISO 14041)

## Energy Backing

Allows optimum reduction of water during extraction process (reduces drying time)

All Specifications are according to ISO 9001 Quality Certification and ISO 14001 Environmental certification and are subject to



# Grime Design Cleaning & Maintenance

## Cleaning and Maintenance Guide

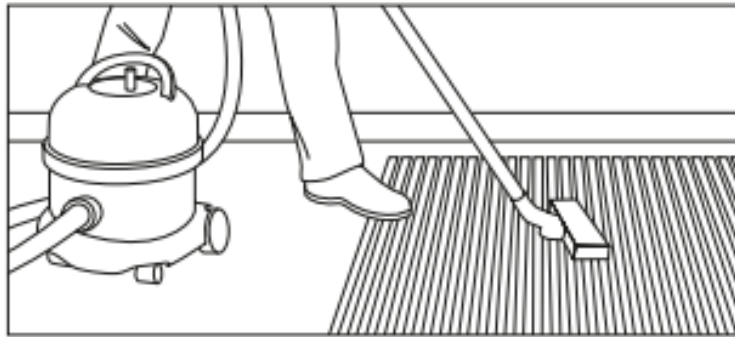
**Grime Design** entrance mats are designed to prevent the foot borne ingress of dirt and moisture into a building.

The aluminum ribs of the mat scrape dirt from shoe soles, whilst the Symphony 100% Econyl recycled Nylon inserts with offer brushing action/ resistance and absorb moisture. The inserts are quick drying thus making a more effective entrance matting system.

## Daily Cleaning

Regular maintenance is vital to ensure that **Grime Design** remains effective.

Normal daily soiling can be dealt with using a suction vacuum cleaner. A 2000-Watt model will give better results than a lower powered model. The use of rubber bladed wet floor tool attachment should increase the effectiveness of the cleaning.



## Periodic maintenance

Best results can be achieved by the periodic use of a spray extraction carpet cleaning machine.

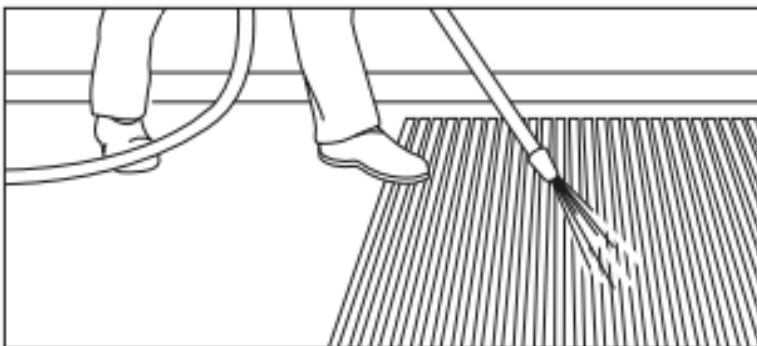
The use of a mild detergent (neutral pH) cleaning solution in the carpet cleaning machine should loosen ingrained soiling and aid the removal of oils and grease. More stubborn stains should be treated a solvent-based spot remover prior to re-cleaning with the detergent solution.

Chewing Gum can be removed by freeze spraying or with a proprietary chewing gum remover and then scraped or combed out of the matting carpet pile. This should be done before the full cleaning process is started.

**Grime Design** mats have replaceable Econyl 100% recycled Nylon inserts (Symphony)

Depending on the regularity of maintenance and the volume of foot traffic, the strips may require replacement at infrequent intervals.

Replacement Econyl 100% recycled Nylon inserts (Symphony) may be obtained from **Jaymart Rubber & Plastics Ltd.**





*Jaymart*

**Jaymart Rubber & Plastics  
Limited**

**Roman Way, Crusader  
Park,**

**Warminster**

**BA12 8SP**

**Tel 01985 218994**

**Email: [sales@jaymart.co.uk](mailto:sales@jaymart.co.uk)**

**[www.jaymart.co.uk](http://www.jaymart.co.uk)**