

**MATERIAL CHARACTERISTICS**

<b>POLYMER CONCRETE</b>	on a Polyester resin basis, with mineral fillers, additives
<b>COMPRESSIVE STRENGTH</b>	≥ 90 N/mm <sup>2</sup>
<b>BENDING STRENGTH</b>	≥ 22 N/mm <sup>2</sup>
<b>ELASTICITY MODULE</b>	25.000 – 35.000 N/mm <sup>2</sup>
<b>DENSITY</b>	2,1 – 2,3 kg/dm <sup>3</sup>
<b>COEFFICIENT OF LINEAR EXPANSION</b>	Approx. 1,45 x 10 <sup>-5</sup> 1/K
<b>HEAT RESISTANCE</b>	100°C continuous load, up to 200°C with a load duration up to 5 min.
<b>FROST RESISTANCE</b>	- 50°C
<b>WATER PENETRATION LEVEL</b>	0 mm
<b>WATER ABSORPTION</b>	< 0,05% DIN 52 103 (A)
<b>MATERIAL STRUCTURE</b>	Capillary free

**PURPOSE OF USE**

Component for the line drainage of surfaces in order to collect, transport and discharge rainwater from adjacent fixed surfaces.

**DESIGN**

- / Length 500 and 1000 mm
- / Length 1000 mm / A including formed-in drain socket
- / Constructive height 115, 140, 165, 190, 215 and 270 mm
- / Sloped channels up to 10 metres, constructive height 115 - 165 mm

**ACCESSORIES**

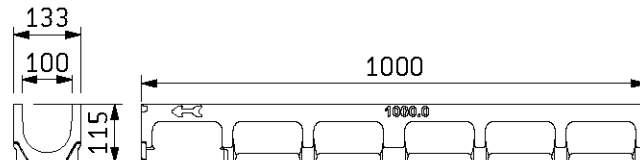
- / Inlet box with an integrated drain socket  
Ø 110 mm or Ø 160 mm
- / End cap closed  
for constructive heights 115 - 270 mm
- / End caps with connection piece Ø 110 mm,  
for constructive heights 115 - 270 mm

# MEADRAIN SL 1000

A 15, B 125, C 250 nominal width 100

## MEADRAIN SL 1000 POLYMER CONCRETE DRAINAGE CHANNEL WITH SEALING JOINT ACCORDING TO EN 1433

Clear width of the drainage channel body 100 mm, total width 133 mm. Suitable for overlaying channel covers **MEA 100 with non-bolted snapping channel cover securement** and **MEA SL 100 bolted**. For the realization of water level slopes, loading classes A 15 to C 250 according to EN 1433. Load capacity according to specification when installed according to the MEA installation instructions.



010713760

## MEADRAIN SL 1000 DRAINAGE CHANNEL BODY WITHOUT FALL, LOADING CLASS C 250\*\* ACCORDING TO EN 1433

Description	Order No.	Length [mm]	Constructive height [mm]	kg/unit
MEADRAIN SL 1000.0 Drainage channel body <sup>4)</sup>	010713760	1000	115	11,30
MEADRAIN SL 1000.0/A Drainage channel with tight formed-in flanged drain socket Ø 110 mm <sup>8)</sup>	010713762	1000	115	11,30
MEADRAIN SL 1000.1 Drainage channel body <sup>4) 14)</sup>	010713764	500	115	6,42
MEADRAIN SL 1005.0 Drainage channel body <sup>4)</sup>	010713766	1000	140	10,82
MEADRAIN SL 1005.0/A Drainage channel with tight formed-in flanged drain socket Ø 110 mm <sup>8)</sup>	010713768	1000	140	12,80
MEADRAIN SL 1005.1 Drainage channel body <sup>4) 14)</sup>	010713770	500	140	6,90
MEADRAIN SL 1010.0 Drainage channel body <sup>4)</sup>	010713772	1000	165	14,30
MEADRAIN SL 1010.0/A Drainage channel with tight formed-in flanged drain socket Ø 110 mm <sup>8)</sup>	010713774	1000	165	14,30
MEADRAIN SL 1010.1 Drainage channel body <sup>4) 14)</sup>	010713776	500	165	7,40
MEADRAIN SL 1015.0 Drainage channel body <sup>4)</sup>	010713778	1000	190	15,80
MEADRAIN SL 1015.0/A Drainage channel with tight formed-in flanged drain socket Ø 110 mm <sup>8)</sup>	010713780	1000	190	15,80
MEADRAIN SL 1015.1 Drainage channel body <sup>4) 14)</sup>	010713782	500	190	7,90
MEADRAIN SL 1020.0 Drainage channel body <sup>4)</sup>	010713784	1000	215	17,30
MEADRAIN SL 1020.0/A Drainage channel with tight formed-in flanged drain socket Ø 110 mm <sup>8)</sup>	010713786	1000	215	17,30
MEADRAIN SL 1020.1 Drainage channel body <sup>4) 14)</sup>	010713788	500	215	8,80
MEADRAIN SL 1030.0 Drainage channel body <sup>4)</sup>	010713790	1000	270	21,30
MEADRAIN SL 1030.0/A Drainage channel with tight formed-in flanged drain socket Ø 110 mm <sup>8)</sup>	010713792	1000	270	21,30

\*\* Not suitable for the diagonal or transverse travel of motorways and highways.

4) Connection option for vertical drain Ø 110 mm or to end cap with connection piece or to a gully

8) Channel elements with tight formed-in drain socket Ø 110 mm made of HD-PE with NBR-O sealing ring

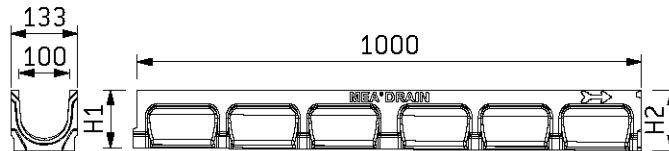
14) Connection option for corner-, t- and cross- connections.

# MEADRAIN SL 1000

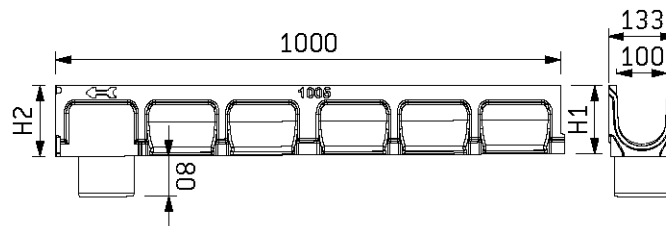
A 15, B 125, C 250 nominal width 100

## MEADRAIN SL 1000 POLYMER CONCRETE DRAINAGE CHANNEL WITH SEALING JOINT ACCORDING TO EN 1433

Clear width of the drainage channel body 100 mm, total width 133 mm. Suitable for overlaying channel covers **MEA 100 with non-bolted snapping channel cover securement** and **MEA SL 100 bolted**. For the realization of a linear fall or with fall 0,5%, loading classes A 15 to C 250 according to EN 1433. Load capacity according to specification when installed according to the MEA installation instructions.



010713794



010713804

## MEADRAIN SL 1000 DRAINAGE CHANNEL BODY WITH FALL 0,5%, LOADING CLASS C 250\*\* ACCORDING TO EN 1433

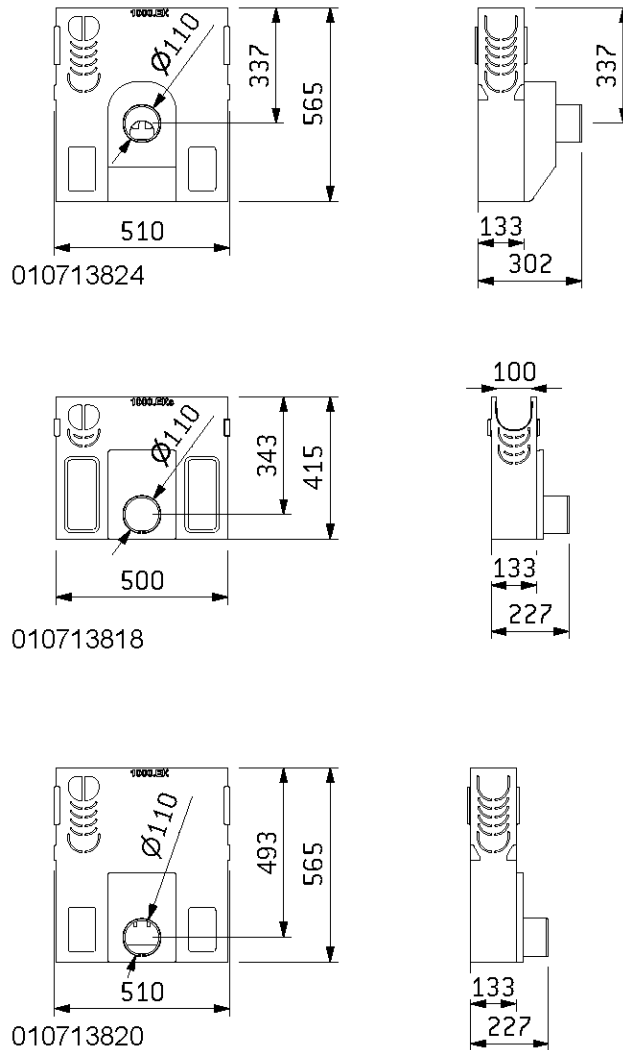
Description	Order No.	Length [mm]	Constructive height H1-H2 [mm]	kg/Stück
MEADRAIN SL 1001 Drainage channel body	010713794	1000	115-120	11,30
MEADRAIN SL 1002 Drainage channel body	010713796	1000	120-125	11,30
MEADRAIN SL 1003 Drainage channel body	010713798	1000	125-130	11,80
MEADRAIN SL 1004 Drainage channel body	010713800	1000	130-135	11,80
MEADRAIN SL 1005 Drainage channel body <sup>4)</sup>	010713802	1000	135-140	12,30
MEADRAIN SL 1005/A Drainage channel with tight formed-in flanged drain socket Ø 110 mm <sup>8)</sup>	010713804	1000	135-140	12,30
MEADRAIN SL 1006 Drainage channel body	010713806	1000	140-145	12,80
MEADRAIN SL 1007 Drainage channel body	010713808	1000	145-150	13,30
MEADRAIN SL 1008 Drainage channel body	010713810	1000	150-155	13,30
MEADRAIN SL 1009 Drainage channel body	010713812	1000	155-160	13,80
MEADRAIN SL 1010 Drainage channel body <sup>4)</sup>	010713814	1000	160-165	13,80
MEADRAIN SL 1010/A Drainage channel with tight formed-in flanged drain socket Ø 110 mm <sup>8)</sup>	010713816	1000	160-165	13,80

\*\* Not suitable for the diagonal or transverse travel of motorways and highways.

4) Connection option for vertical drain Ø 110 mm or to end cap with connection piece or to a gully

8) Channel elements with tight formed-in drain socket Ø 110 mm made of HD-PE with NBR-O sealing ring.

**MEADRAIN SL 1000 ACCESSORIES**

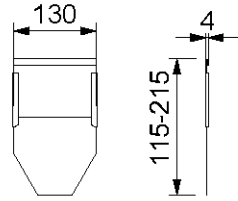


**MEADRAIN SL 1000 GULLIES\*\***

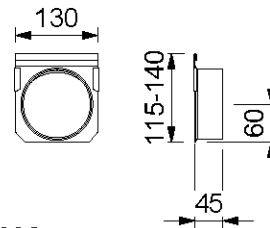
Description	Order No.	Length [mm]	Constructive height [mm]	kg/unit
MEADRAIN SL 1000.EK110 Gully incl. sediment bucket for pipe connection Ø 110 mm	010713820	500	565	33,40
MEADRAIN SL 1000.EK160 Gully incl. sediment bucket for pipe connection Ø 160 mm	010713822	500	565	33,40
MEADRAIN SL 1000.EK QG110 Gully incl. sediment bucket and odour trap transversely to flow direction Ø 110 mm	010713824	500	565	34,90
MEADRAIN SL 1000.EK QG160 Gully incl. sediment bucket and odour trap transversely to flow direction Ø 160 mm	010713826	500	565	35,40
MEADRAIN SL 1000.EK Gully short, H=43,5 cm incl. sediment bucket for pipe connection Ø 110 mm	010713818	500	420	26,90

\*\* Not suitable for the diagonal or transverse travel of motorways and highways.

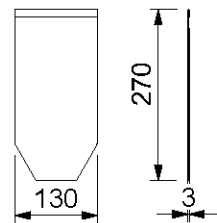
**MEADRAIN SL 1000 ACCESSORIES**



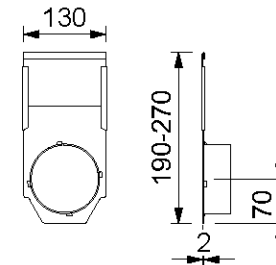
010713828



010713832



010713830



010713836

**MEADRAIN SL 1000 END CAPS**

Description	Order No.	Material	kg/unit
MEADRAIN SL 1000-20.SE End cap for channel start/end, height adjustable	010713828	Galv. steel	0,24
MEADRAIN SL 1030.SE End cap for channel start/end, fixed height	010713830	Galv. steel	0,30
MEADRAIN SL 1000-5.E End cap for channel end - height adjustable with connection piece Ø 110 mm	010713832	Galv. steel	0,39
MEADRAIN SL 1005-15.E End cap for channel end - height adjustable with connection piece Ø 110 mm	010713834	Galv. steel	0,48
MEADRAIN SL 1015-30.E End cap for channel end - height adjustable with connection piece Ø 110 mm	010713836	Galv. steel	0,68

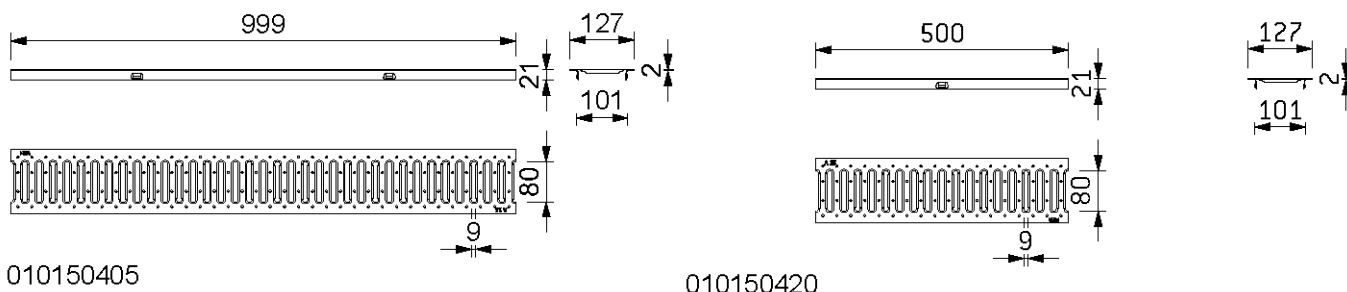
# MEADRAIN SL 1000

A 15, B 125, C 250 nominal width 100



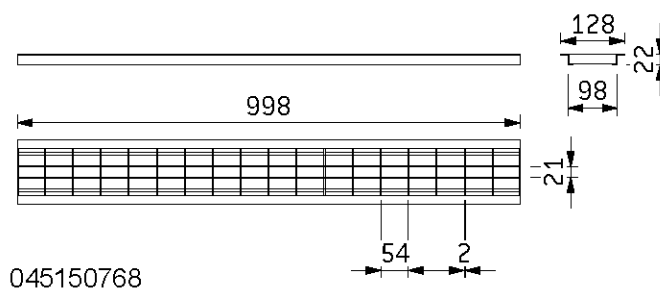
BUILDING SUCCESS

## MEADRAIN SL 1000 CHANNEL COVERS



### MEA 100 WITH NON-BOLTED SNAPPING CHANNEL COVER SECUREMENT, SLOTTED GRATING, LOADING CLASS A 15 ACCORDING TO EN 1433

Description	Order No.	Material	Length [mm]	Inlet sect. area Ø cm <sup>2</sup> /m above	kg/unit
MEA EASY-SL 100 Galv. slotted covering grating-A 15-1 m-SP	010150405	Galv. steel	1000	256,50	1,37
MEA SL 100 Galv. slotted covering grating-A 15-1 m-SP (only for Leroy Merlin)	045115420	Galv. steel	1000	256,50	1,57
MEA EASY-SL 100 Galv. slotted covering grating-A 15-0,5 m-SP	010150420	Galv. steel	500	256,50	1,10



045150768

### MEA 100, OVERLAYING MESH GRATING, LOADING CLASS A 15 ACCORDING TO EN 1433

Description	Order No.	Material	Length [mm]	Inlet sect. area Ø cm <sup>2</sup> /m above	kg/unit
MEA SL 100 Galv. mesh grating covering grating-A 15-1 m-MW 55/22	045150768	Galv. steel	1000	771	2,39

**MEADRAIN SL 1000 CHANNEL COVERS****MEA 100 WITH NON-BOLTED SNAPPING CHANNEL COVER SECUREMENT, SLOTTED GRATING, LOADING CLASS B 125 ACCORDING TO EN 1433**

Description	Order No.	Material	Length [mm]	Inlet sect. area Ø cm <sup>2</sup> /m above	kg/unit
MEA SL 100 ductile iron slotted grating-B 125-0,5 m-SP	010150455	Ductile iron	500	468	2,30
MEA SL 100 Ductile iron slotted covering grating-B 125-0,5 m-SP (only for Leroy Merlin)	045150455	Ductile iron	500	468	2,30

**MEA 100 BOLTED, SLOTTED GRATING, LOADING CLASS C 250 ACCORDING TO EN 1433**

Description	Order No.	Material	Length [mm]	Inlet sect. area Ø cm <sup>2</sup> /m above	kg/unit
MEA SL 100 Ductile iron slotted grating 14/84-C 250-0,5 m bolt fixing possible	010150450	Ductile iron	500	468	3,60

**LOCKING MECHANISM**

Description	Order No.	Material	kg/unit
MEADRAIN SL 1000 bolted channel cover securement, ductile iron grating C 250	010152112	Galv. steel	0,09

This edition of the technical data sheet shall be valid from October 2021 until a revised version is published and replaces any previous publications. The respectively current version is available for download at [www.mea-group.com](http://www.mea-group.com).

MEA Bautechnik GmbH  
 Business Unit MEA Water Management  
 Sudetenstraße 1  
 86551 Aichach  
 Tel.: +49 (0) 82 51. 91 0  
 Fax: +49 (0) 82 51. 91 13 06  
 E-Mail: [info@mea-group.com](mailto:info@mea-group.com)  
[www.mea-group.com](http://www.mea-group.com)