

Maximum reliability. Minimum fuss.



Selector Guide

Kingspan KS1100 CS

Kingspan

Fastener Systems and Sealing Products

Contents

Products for Specific Applications	3 - 9
Accessories	10
Technical Data	11 - 14
Technical Notes	15

Introduction to Fixfast

Fixfast design, manufacture and supply specialist building fasteners and components for the walls and roofs of industrial, commercial and larger residential buildings. We collaborate with major building envelope system manufacturers, such as Kingspan, to provide them and their clients with engineered fastening and sealing solutions.

This selector guide has been created as an easy to use reference document, identifying the most common fasteners and components for use when installing the Kingspan KS1100 CS panel system.

Full technical data for these products along with application uses can be found on our website at www.fixfast.com by searching for the product.

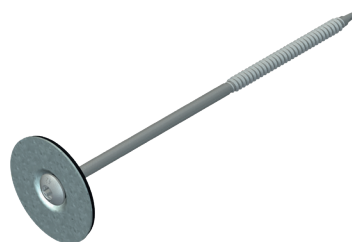
Our specification team can assist in providing NBS specifications for specific projects, whilst our customer services team can answer questions regarding the usage or ordering of Fixfast products.

If you have any queries regarding our products or services then please do contact our customer services team on 0800 304 7616 or by emailing sales@fixfast.com.

KS1100 CS external roof primary fixing to cold rolled steel 1.2 - 3.0mm

Use DrillFast® Stainless low profile fastening system

Low profile head, TX drive - use Fixfast RedDrive.



Panel Thickness	Fastener Code
50	DF3-SSA4-P-HT-SFW-5.5 x 115
60	DF3-SSA4-P-HT-SFW-5.5 x 115
80	DF3-SSA4-P-HT-SFW-5.5 x 115
100	DF3-SSA4-P-HT-SFW-5.5 x 155
125	DF3-SSA4-P-HT-SFW-5.5 x 155
150	DF3-SSA4-P-HT-SFW-5.5 x 240
175	DF3-SSA4-P-HT-SFW-5.5 x 240
200	DF3-SSA4-P-HT-SFW-5.5 x 240
220	Please enquire for details

For fixing panels to timber, please contact Fixfast Customer Service team on **0800 304 7616**

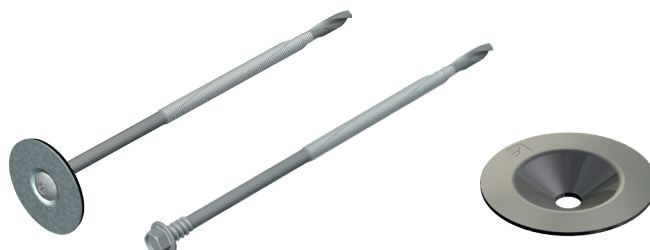
KS1100 CS external roof primary fixing to hot rolled steel 4.0 - 12.0mm

Use DrillFast® Stainless fasteners and deep dish washer or DrillFast® stainless low profile fastening system

8mm hex head, use Fixfast GreenDrive

Low profile head, TX drive - use Fixfast RedDrive

Cut out for deep dish washer; 25mm



Panel Thickness	Fastener Code
50	DF12-SS-HT-5.5 x 95 (with SP-40-DD plate)
60	DF12-SSA4-P-HT-SFW-5.5 x 165
80	DF12-SSA4-P-HT-SFW-5.5 x 165
100	DF12-SSA4-P-HT-SFW-5.5 x 165
125	DF12-SSA4-P-HT-SFW-5.5 x 165
150	DF12-SSA4-P-HT-SFW-5.5 x 230
175	DF12-SSA4-P-HT-SFW-5.5 x 230
200	DF12-SSA4-P-HT-SFW-5.5 x 230
220	DF12-SS-HT-5.5 x 300 (with SP-40-DD plate)

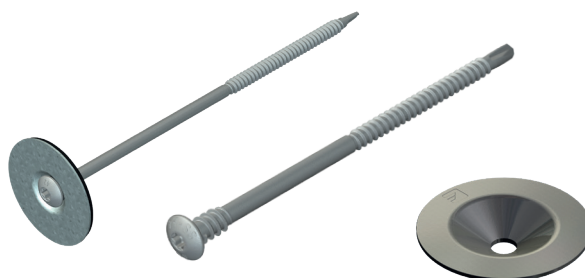
KS1100 CS external wall primary fixing to 1.2 - 3.0mm steel for flush finish under flashing

Use DrillFast® Stainless fasteners and deep dish washer or DrillFast® stainless low profile fastening system

8mm hex head, use Fixfast GreenDrive

Low profile head, TX drive - use Fixfast RedDrive

Cut out for deep dish washer; 25mm



Panel Thickness	Fastener Code
50	DF3-SSA4-P-HT-SFW-5.5 x 115
60	DF3-SSA4-P-HT-SFW-5.5 x 115
80	DF3-SSA4-P-HT-SFW-5.5 x 115
100	DF3-SSA4-P-HT-SFW-5.5 x 155
125	DF3-SSA4-P-HT-SFW-5.5 x 155
150	DF3-SSA4-P-HT-SFW-5.5 x 240
175	DF3-SSA4-P-HT-SFW-5.5 x 240
200	DF3-SSA4-P-HT-SFW-5.5 x 240
220	DF3-SS-HT-5.5 x 275 (with SP-40-DD)

For fixing panels to timber, please contact Fixfast Customer Service team on **0800 304 7616**

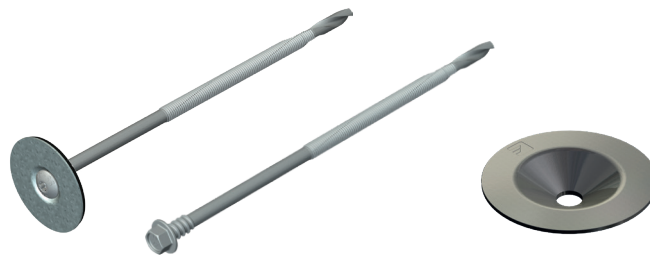
KS1100 CS external wall primary fixing to steel 4.0 - 12.0mm for flush finish under flashing

Use DrillFast® Stainless fasteners and deep dish washer or DrillFast® stainless low profile fastening system

8mm hex head, use Fixfast GreenDrive

Low profile head, TX drive - use Fixfast RedDrive

Cut out for deep dish washer: 25mm



Panel Thickness	Fastener Code
50	DF12-SS-HT-5.5 x 95 (with SP-40-DD plate)
60	DF12-SSA4-P-HT-SFW-5.5 x 165
80	DF12-SSA4-P-HT-SFW-5.5 x 165
100	DF12-SSA4-P-HT-SFW-5.5 x 165
125	DF12-SSA4-P-HT-SFW-5.5 x 165
150	DF12-SSA4-P-HT-SFW-5.5 x 230
175	DF12-SSA4-P-HT-SFW-5.5 x 230
200	DF12-SSA4-P-HT-SFW-5.5 x 230
220	DF12-SS-HT-5.5 x 300 (with SP-40-DD plate)

KS1100 CS external wall primary fixing to steel 1.2 - 3.0mm

Use MatchFast® stainless fasteners

11mm bi-hex head, use Fixfast MF1165 drive.



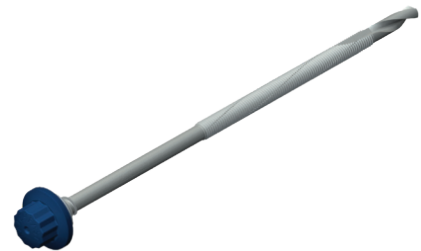
Panel Thickness	Fastener Code
50	MF3-SS-HT-A15-5.5 x 85 + colour
60	MF3-SS-HT-A15-5.5 x 85 + colour
80	MF3-SS-HT-A15-5.5 x 110 + colour
100	MF3-SS-HT-A15-5.5 x 130 + colour
125	MF3-SS-HT-A15-5.5 x 150 + colour
150	MF3-SS-HT-A15-5.5 x 180 + colour
175	MF3-SS-HT-A15-5.5 x 225 + colour
200	MF3-SS-HT-A15-5.5 x 225 + colour
220	MF3-SS-HT-A15-5.5 x 275 + colour

For fixing panels to timber, please contact Fixfast Customer Service team on **0800 304 7616**

KS1100 CS external wall primary fixing to steel 4.0 - 12.0mm

Use MatchFast® stainless fasteners

11mm bi-hex head, use Fixfast MF1165 drive.



Panel Thickness	Fastener Code
50	MF12-SS-HT-A15-5.5 x 95 + colour
60	MF12-SS-HT-A15-5.5 x 115 + colour
80	MF12-SS-HT-A15-5.5 x 150 + colour
100	MF12-SS-HT-A15-5.5 x 150 + colour
125	MF12-SS-HT-A15-5.5 x 200 + colour
150	MF12-SS-HT-A15-5.5 x 200 + colour
175	MF12-SS-HT-A15-5.5 x 250 + colour
200	MF12-SS-HT-A15-5.5 x 250 + colour
220	Please enquire for details

KS1100 CS external wall sheet sticher

Use MatchFast® stainless fasteners

11mm hex head, use Fixfast MF1165.



Fastener Code

MF2-SS-A15-6.3 x 25 + colour

KS1100 CS external wall sheet sticher

Use DrillFast® Lacquered fasteners

TX25 drive, use Fixfast RedDrive.

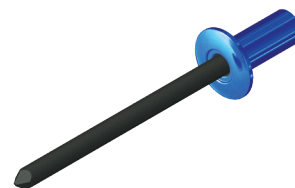


Fastener Code

DF2-SSA4-PL-S15-6.3 x 25 + colour

KS1100 CS fixing internal wall trims and finish detailing

Use lacquered stainless steel sealed head rivets



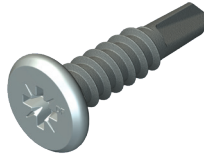
Fastener Code

RSH-AS-LAC-4.8 x 11 + colour

RSH-AS-LAC-4.8 x 14 + colour

KS1100 CS fixing internal wall trims and finish detailing

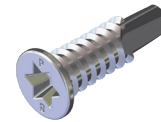
Use DrillFast® Lacquered fasteners



DF3-CF-L



DF3-SS-CF-L



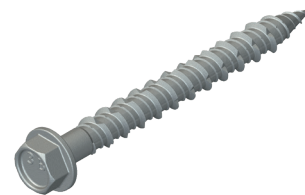
DF2-CFX

Fastener Code	Drive bit type
DF2-CFX-L-20 + colour	CFX-20
DF3-CF-L-4.8 x 16 + colour	2PZD
DF3-CF-L-5.5 x 22 + colour	2PZD
DF3-SS-CF-L-4.8 x 25 + colour	2PP

KS1100 CS fixing internal wall base channel to floor

UseTufFast® stainless masonry fasteners

8mm hex head - use GreenDrive.



Pilot hole required - recommended size in concrete - 4.8/5.0mm*

Fastener Code
HTF-SS-6.3 x 45

Please note: many other sizes are available, please enquire for details.

*in certain situations 5.0mm may be necessary, although 4.8mm is the standard recommendation.

KS1100 CS panel sealant

Use Seelex 40 polyurethane sealant



Sealant Code	Cartridge Size (ml)	Colour
SEELEX 40	310	White

KS1100 CS panel sealant

Use Seelex FS food safe low modulus silicone sealant



Sealant Code	Cartridge Size (ml)	Colour
Seelex FS	310	White

KS1100 CS vapour seal sealant inside panel joint

Use Seelex BR gun grade butyl rubber sealant



Sealant Code	Cartridge Size (ml)	Colour
SEELEX-BR	380	White

KS1100 CS seal between external flashing and panel

Use A Class butyl strip sealant



Sealant Code	Thickness x Width (mm)	Roll Length (m)
A-2 x 15 x 22.5	2 x 15	22.5
A-6 dia x 8	6mm bead	8

GreenDrive

One-piece drive socket for DrillFast® stainless fasteners, supports the head for easy accurate driving.



Product Code: GREENDRIVE

RedDrive

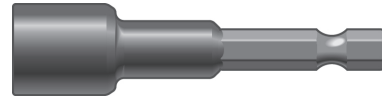
One-piece drive socket for DrillFast® low profile fasteners, supports the head for easy accurate driving.



Product Code: REDDRIVE

MF1165 Drive

One-piece drive socket for MatchFast® fasteners, supports the head for easy accurate driving.



Product Code: MF1165

Many other tools and accessories are available.

Please see the current Fixfast Product Directory, go to www.fixfast.com, or ask the Fixfast customer service team.

Technical Data

DF3-SSA4-P-HT-SFW-5.5 Range	
Material	1.4401 stainless steel (316M), with steel case hardened welded point, A4 stainless steel plate
Coating	Organic
Drilling Capacity	1.2mm - 3.0mm steel
Pull-out Values (axial load resistance)	
Substrate	Characteristic value
1.2mm Steel	1.30kN
2.0mm Steel	2.62kN
3.0mm Steel	4.76kN
Softwood 35mm Embedment	3.57kN

DF12-SSA4-P-HT-SFW-5.5 Range	
Material	1.4401 stainless steel (316M), with carbon steel case hardened welded point, A4 stainless steel plate
Coating	Organic
Head Type	Low profile
Drilling Capacity - DF12	4.0 – 12.0mm Steel
Pull-out Values (axial load resistance)	
Substrate	Characteristic Value
4.0mm steel	4.02 kN
6.0mm steel	5.44 kN
8.0mm steel	5.59 kN
12.0mm steel	5.59 kN

DF3-SS-HT-5.5 Range	
Material	1.4301 stainless steel (304M), with steel case hardened welded point
Coating	Organic
Drilling Capacity	1.2mm - 3.0mm steel
Pull-out Values (axial load resistance)	
Substrate	Characteristic value
1.2mm Steel	1.30kN
2.0mm Steel	2.62kN
3.0mm Steel	4.76kN
Softwood 35mm Embedment	3.57kN

Technical Data

DF12-SS-HT-5.5 Range

Material	1.4301 Stainless steel (304M), with steel case hardened welded point
Coating	Organic
Drilling Capacity	4.0mm - 12.0mm steel
Pull-out Values (axial load resistance)	
Substrate	Characteristic value
4.0mm Steel	2.80kN
6.0mm Steel	3.09kN
8.0mm Steel	6.89kN
12.0mm Steel	6.89kN

MF3-SS-HT-5.5 Range

Material	1.4301 stainless steel (304M), with steel case hardened welded point and UV-stabilised nylon moulded head
Coating	Organic
Drilling Capacity	1.2mm - 3.0mm steel
Pull-out Values (axial load resistance)	
Substrate	Characteristic value
1.2mm Steel	1.30kN
2.0mm Steel	2.62kN
3.0mm Steel	4.76kN
Softwood 35mm Embedment	3.57kN

MF12-SS-HT-5.5 Range

Material	1.4301 stainless steel (304M), with steel case hardened welded point and UV-stabilised nylon moulded head
Coating	Organic
Drilling Capacity	4.0 - 12.0mm steel
Pull-out Values (axial load resistance)	
Substrate	Characteristic value
4.0mm Steel	2.80kN
6.0mm Steel	3.09kN
8.0mm Steel	6.89kN
12.0mm Steel	6.89kN

Technical Data

MF2-SS-6.3 x 25	
Material	1.4301 stainless steel (304M), with steel case hardened welded point UV-stabilised nylon moulded head
Coating	Organic
Drilling Capacity	max 2 x 1.0mm S275 steel
Pull-out Values (axial load resistance)	
Fastener	Characteristic value
MF2-SS-6.3 x 25	0.60kN

DF2-SSA4-PL-6.3 x 25	
Material	1.4401 stainless steel (316M), with steel case hardened welded point
Coating	Organic
Drilling Capacity	Max 2 x 1.0mm S275 Steel
Pull-out Values (axial load resistance)	
Substrate	Characteristic value
0.5mm Steel	0.60kN
1.0mm Steel	1.23kN

DF3-CF-L-4.8 x 16	
Material	Steel SAE1022 steel case hardened
Coating	Bright zinc plated
Drilling Capacity	1.2mm - 3.0mm Steel
Pull-out Values (axial load resistance)	
1.2mm Steel	1.18kN
2.0mm Steel	2.35kN
3.0mm Steel	4.09kN

DF3-CF-L-5.5 x 22	
Material	Steel SAE1022 steel case hardened
Coating	Bright zinc plated
Drilling Capacity	1.2mm - 3.0mm steel
Pull-out Values (axial load resistance)	
1.2mm Steel	1.52kN
2.0mm Steel	3.01kN
3.0mm Steel	5.42kN

Technical Data

DF3-SS-CF-LS-4.8 x 25

Material	1.4301 stainless steel (304M), with steel case hardened welded point
Coating	Organic
Drilling Capacity	1.2mm - 3.0mm steel
Pull-out Values (axial load resistance)	
Substrate	Characteristic value
1.2mm Steel	1.12kN
2.0mm Steel	2.19kN
3.0mm Steel	4.10kN

DF2-CFX-L-20

Material	Steel SAE1022 case hardened
Coating	Bright zinc plated
Drilling Capacity	0.5mm - 2.0mm steel
Pull-out Values (axial load resistance)	
Substrate	Characteristic value
0.5mm Steel	0.30kN
1.2mm Steel	0.87kN
2.0mm Steel	1.92kN

HTF-SS-6.3 x 45

Material	A2 300 series stainless steel
Coating	Organic

Fastener Data

- + All dimensions are subject to manufacturing tolerances.
- + Performance values are tested and calculated according to Eurocode procedures and appropriate safety factors should be applied in any calculations using these values.

Fastener Selection

- + Recommended fastener lengths are calculated using standard tolerances for the fasteners and the combination of materials in the build-up.
- + If there is distortion in the supporting construction, or other non-standard application detail, longer fasteners may be necessary than those shown. Always check the actual circumstances before deciding on a particular length.

Further Assistance

- + For any enquiry, or to discuss your requirements with someone knowledgeable, call the Fixfast customer service team on **0800 304 7616**.
- + Full literature is available for the Fixfast range, or visit **www.fixfast.com**
- + Other performance data may be available on request. For more unusual applications, tests can be carried out in our in-house technical centre to provide the necessary data.
- + Site visits are also possible, particularly for pull-out performance into concrete, masonry or other variable substrates. Please ask for a Site Visit Request form if you think this service would be useful.
- + CAD files of fasteners are available on request for inclusion in drawings.

The information contained in this document is based on the specification of the Kingspan KS1100 CS system and Fixfast's product data. It is provided in good faith but Fixfast cannot be held liable for any errors. Performance is dependent on adherence to the conditions and instructions contained in Fixfast's Technical Data Sheets for the products shown. Performance values should be approved by a qualified engineer, and Fixfast recommend preliminary tests for any application where variation is possible in the materials or substrates involved.



Merlin House
Seven Mile Lane
Borough Green
Sevenoaks
Kent
TN15 8QY

Enquiries

0800 304 7616

International

+44 (0) 1732 882387

Fax

0845 450 7486

Email

info@fixfast.com



Certificate number 10905
ISO 9001, ISO 14001
OHSAS 18001