

FrameTec Select 2.0



Glazing profiles

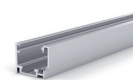
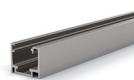


FrameTec Select 2.0 appeals through the unobtrusive, uniform appearance of the whole system. Frame and glazing profiles have the same, low depth of 36.5 mm and therefore provide a straight-lined design, which conveys a particularly harmonious and lightweight appearance.

The depth adjustability of the glazing profiles enables a harmonious appearance. The glass panes are safely clamped with the aid of high-quality sealing strips – completely without the need of any glass processing.

You can find more information and products for the FrameTec Select 2.0 glass partition wall system in our online shop.

- Quick and cost-saving assembly
- High quality processing
- Dry glazing with plug-in seals



GLAZING PROFILE ONE-PIECE

5000 mm	aluminium-coloured anodised E6/EV1	BO 5220843
5000 mm	stainless steel effect anodised E1/C31	BO 5220844
5000 mm	powder-coated matt black RAL 9005	BO 5220845

from 2021

GLAZING PROFILE TWO-PIECE

5000 mm	aluminium-coloured anodised E6/EV1	BO 5220840
5000 mm	stainless steel effect anodised E1/C31	BO 5220841
5000 mm	powder-coated matt black RAL 9005	BO 5220842

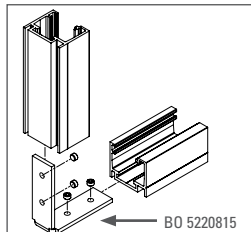
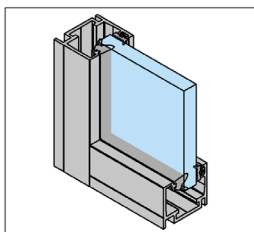
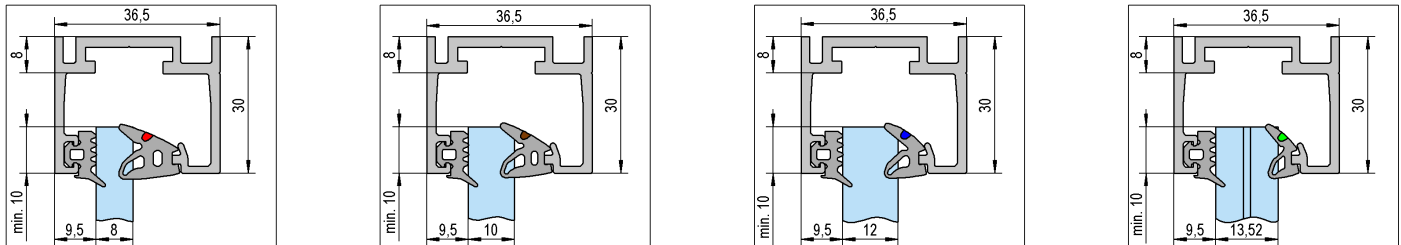
from 2021

FrameTec Select 2.0



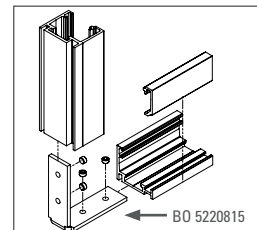
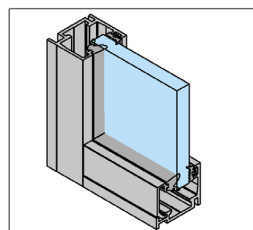
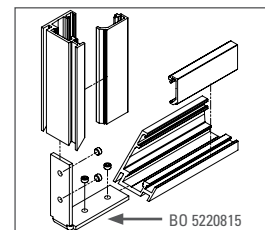
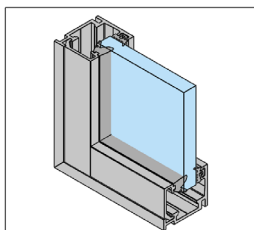
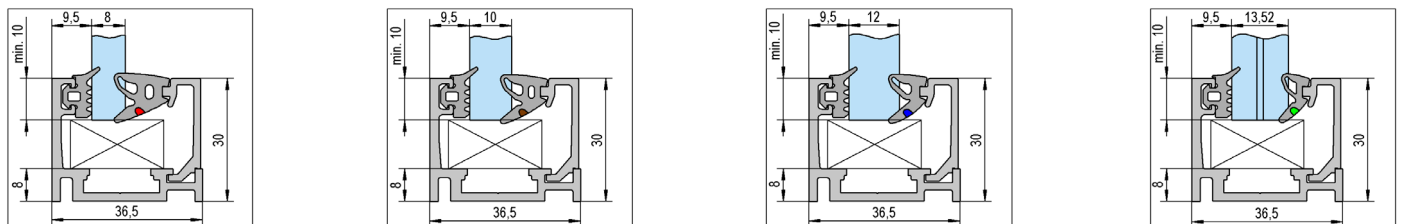
Glazing profiles

Glazing profile one-piece



i Glass thickness tempered glass 8 - 12 mm, laminated glass 8.76 - 13.52 mm · Please order corner connectors and sealing strips separately, depending on the glass thickness · Work length 4950 mm

Glazing profile tow-piece



i Glass thickness tempered glass 8 - 12 mm, laminated glass 8.76 - 13.52 mm · Please order corner connectors and sealing strips separately, depending on the glass thickness · Work length 4950 mm

Matching seals

The glass pane is securely clamped with the help of high quality gaskets and this completely without any glass processing. The gaskets are available in black or grey.

