

# OFFICE AND WORKPLACE WASHROOM SOLUTIONS





# FRANKE WATER SYSTEMS

World leader in supplying  
washroom solutions

*“Franke’s brand promise is to ‘Make It Wonderful’, whether you are a business partner or an end user”*

## Over 235 years of experience

Franke has been specialising in products for commercial washrooms for over 200 years and Dart Valley Systems are a market leader in the field of water-saving products along with automatic washroom solutions for over 30 years. Together Franke and DVS have united in order to provide one wonderful solution to specialist applications.

Washrooms in offices, factories and other workplace environments can be an important experience for users, from customers to employees. Our range has been designed to be robust and aesthetically pleasing in order to cater for all users.

With a complete range of sanitaryware including urinals and WC’s, washbasins and integrated stylish accessories, along with touch-free water saving taps our products are suitable for any workplace. The standard and bespoke products within the washroom range are scalable to match the size and scope of any project.



## Contents

4
6
8
10
12
14
16
18
20
22
24
26
28
30
32
34
36
38



**CE/UKCA MARKING** is applied to products to indicate conformity to the current regulations. Certifications can be found on our websites.

**BREEAM** Franke can assist specifiers in achieving BREEAM points for projects with a range of water and energy efficient products.

**UNIFIED WATER LABEL** Part of the BMA, the water efficient product label focuses on specific water saving products that are particularly water efficient.



**NSF TMV3**  
TMV3 scheme ensures that products are suitable for healthcare environments and provide a safe water supply.



**WRAS** promote, encourage and enforce the prevention of waste, undue consumption, misuse, or contamination of water.

**HOLDERS OF ISO9001** globally recognised rigorous set of standards for quality management.

**HOLDERS OF ISO14001** globally recognised rigorous set of standards for environmental management

**ACCREDITED CONTRACTOR CHAS** The Contractors Health and Safety Assessment Scheme improves health and safety standards across the UK.

**SAFE CONTRACTOR APPROVED**  
SafeContractor delivers a tailored health and safety accreditation.

**CONSTRUCTIONONLINE** Help buyers to simplify and speed up their search, improving resource and cost efficiency through the validation of purchasing decisions. Based on suppliers completion of multiple document working to the PAS 91 criteria.

**RIBA CPD** We offer a choice of RIBA approved CPD interactive seminars – a must for anyone specifying washrooms for commercial projects.

**BMA** The Bathroom Manufacturers association acts as an information highway between Industry Government and the consumer on all issues that affect the bathroom business in the UK.

**WELS** Australian Standards relating to product quality, including health and safety efficiency.



**IHEEM**  
Institute of Healthcare Engineering & Estate Management is the UK's largest specialist Institute for the Healthcare Estates sector.



**NBS SOURCE** is a tool that creates a single source for product information and data. There are over 200 products listed and a range of corresponding BIM models available for both Franke and Dart Valley branded ranges.



**WATER TECHNOLOGY LIST (WTL)** WTL provides details of products that qualify for the enhanced capital allowance scheme, both Franke and Dart Valley branded ranges are listed in the database.



# WORKPLACE WASHROOMS

From offices to factories...

## Versatile washroom solutions from Franke Water Systems UK

In today's commercial washroom environment design is becoming a big factor within the specification process, whether it be the integration of latest technology or design-led products. There are many products on the market that can create a smart and unique washroom to suit any budget. Washrooms can have an impact on the experience particularly in offices whether it be a client or employee the aesthetics and functionality are of key importance to any visitor. In larger work place washrooms such as big corporate offices or factory toilets water consumption can be an issue. Choosing efficient products can not only save hundreds of thousands of litres of water per year but also reduce running costs.

Washrooms in office buildings project company values to visitors while also providing a feel-good factor to employees, that can have a motivating impact on them. Clean, hygienic washrooms and workspaces show your employees how much you value their dedication and effort. Clear shapes and easy-care surfaces based on contemporary designs foster a friendly atmosphere in a hygienic environment and form the ideal basis for establishing this value. We offer a wide range of products suitable for any office or workplace environment.

## Project support

Specifying products for a project can be a long drawn out process, if you have a large project with various bespoke products and are unsure of what to specify, please get in touch with our pre-sales team. The support staff can offer product advice and pricing support on special products so you can achieve your specification and budget requirements.

For more information and advice call 01246 458900 or email [ws-info.uk@franke.com](mailto:ws-info.uk@franke.com). Alternatively you can go online and book an appointment with one of Franke's experienced Specification Sales Managers who are happy to help and offer you support.



304 stainless steel



Composite material



Touch free options



Easy installation



Water saving products



Programmable options





# SOAP AND SANITISER DISPENSERS

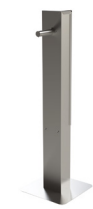
## Perfect for the entrance of any building

### Liquid soap and hand sanitiser dispensers

Manufactured from high quality durable stainless steel, these free-standing soap and sanitiser stations are ideal for almost any environment, from the foyer of any corporate building to office reception areas and factory canteens. Each unit can be easily refilled, either through the key lock fronts (Franke branded versions) or access panel (DVS branded versions). The battery operated touch-free operation and free-standing design adds ultimate flexibility when positioning. For large workplace spaces with multiple buildings, bespoke outdoor dispensers are also available on request, please get in touch to enquire.



Touch free operation   Liquid soap & sanitiser   Hygienic material   Easy to clean   304 stainless steel



#### DVS TOUCH-FREE HAND SANITISER DISPENSER WITH STAND

High quality stand with a small footprint which includes a DVS branded bib sanitiser dispenser and concealed 1.6 -2 litre refillable bottle.\* Please note the DVS branded dispenser is only suitable for alcohol-free sanitiser.

<b>AC00-050</b>	201.0624.808	
<b>AC00-008</b>	201.0631.912	Alcohol-free 5 litre gel refill



#### TOUCH-FREE SANITISER/SOAP DISPENSER WITH SLIMLINE STAND

Slimline stand with a small footprint and anti-spill tray. All touch-free dispensers have inspection window and key lock.\*

<b>RODX627H-STD37</b>	201.0624.739	Rodan sanitiser
<b>RODX625H-STD37</b>	201.0624.735	Rodan soap dispenser
<b>STRX627-STD37</b>	201.0631.094	Stratos sanitiser dispenser
<b>STRX625-STD37</b>	201.0624.801	Stratos soap dispenser
<b>EXOS625X-STD37</b>	201.0624.803	Exos. soap dispenser
<b>EXOS627X-STD37</b>	201.0631.096	Exos. sanitiser



#### TOUCH-FREE SOAP/HAND SANITISER DISPENSERS WITH PREMIUM STAND

Premium stand with a small footprint and anti-spill tray. All touch-free dispensers have inspection window and key lock.\*

<b>RODX627H-STD36</b>	201.0624.740	Rodan sanitiser
<b>RODX625H-STD36</b>	201.0624.737	Rodan soap dispenser
<b>STRX627-STD36</b>	201.0631.097	Stratos sanitiser dispenser
<b>STRX625X-STD36</b>	201.0624.802	Stratos soap dispenser
<b>EXOS625X-STD36</b>	201.0624.804	Exos. soap dispenser
<b>EXOS627X-STD36</b>	201.0631.098	Exos. sanitiser

\*Junior heights and manual dispensers are also available.



Completely touch-free hand washing places for optimum hand hygiene



#### Touch-free sanitiser dispenser station

Touch-free sanitiser dispenser station with built in sensors, manufactured from quality stainless steel. A clean shot of liquid soap is dispensed automatically without any need to touch the unit, reducing cross contamination and substantially improving hygiene in the washroom.

<b>AC00-053</b>	201.0657.799	
-----------------	--------------	--



# MIRANIT COMPOSITE WASHBASINS

Stylish and practical



## MIRANIT QUADRO WASHBASINS WITHOUT TAP HOLES

Dimensions: 125 x 530 mm (H x D)

<b>ANMW410</b>	203.0000.018	Single 600 mm (W)
<b>ANMW420</b>	203.0000.021	Double 1400 mm (W)
<b>ANMW430</b>	203.0000.024	Triple 2100 mm (W)

## MIRANIT QUADRO WASHBASINS WITH TAP HOLES

Dimensions: 125 x 530 mm (H x D)

<b>ANMW411</b>	203.0000.149	Single 600 mm (W)
<b>ANMW421</b>	203.0460.133	Double 1400 mm (W)
<b>ANMW431</b>	203.0000.132	Triple 2100 mm (W)

## MIRANIT RONDA WASHBASINS WITHOUT TAP HOLES

Dimensions: 125 x 530 mm (H x D)

<b>ANMW210</b>	203.0000.129	Single 600 mm (W)
<b>ANMW220</b>	203.0000.009	Double 1400 mm (W)
<b>ANMW230</b>	203.0000.013	Triple 2100 mm (W)

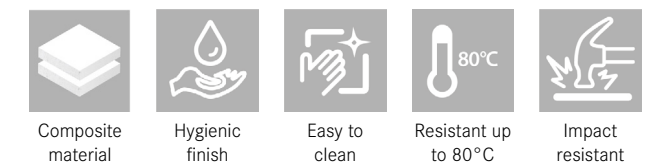
## MIRANIT RONDA WASHBASINS WITH TAP HOLES

Dimensions: 125 x 530 mm (H x D)

<b>ANMW211</b>	203.0000.130	Single 600 mm (W)
<b>ANMW221</b>	203.0000.011	Double 1400 mm (W)
<b>ANMW231</b>	203.0000.131	Triple 2100 mm (W)

## MIRANIT COMPOSITE WASHBASINS

Miranit composite washbasins are ideal for modern office toilets as they are manufactured from a robust solid surface material. Available in 1, 2 and 3 person wash stations the basins are ideal for even the largest facilities. The range includes Quadro square basins and Ronda rounded front basins with an option with or without tap holes. Pair with electronic or self-closing taps for a complete solution.



### AQUARIUS 45° SPOUT

Touch-free spout with a satin finish and PEX hoses. Nominal 5 litre per minute flow rate.

**AT03-011** 208.0000.080



### F3S MIXER TAP

F3 mixer self-closing mixer tap, Nominal 3 litres per minute flow rate.

**F3SM1001** 208.0563.601

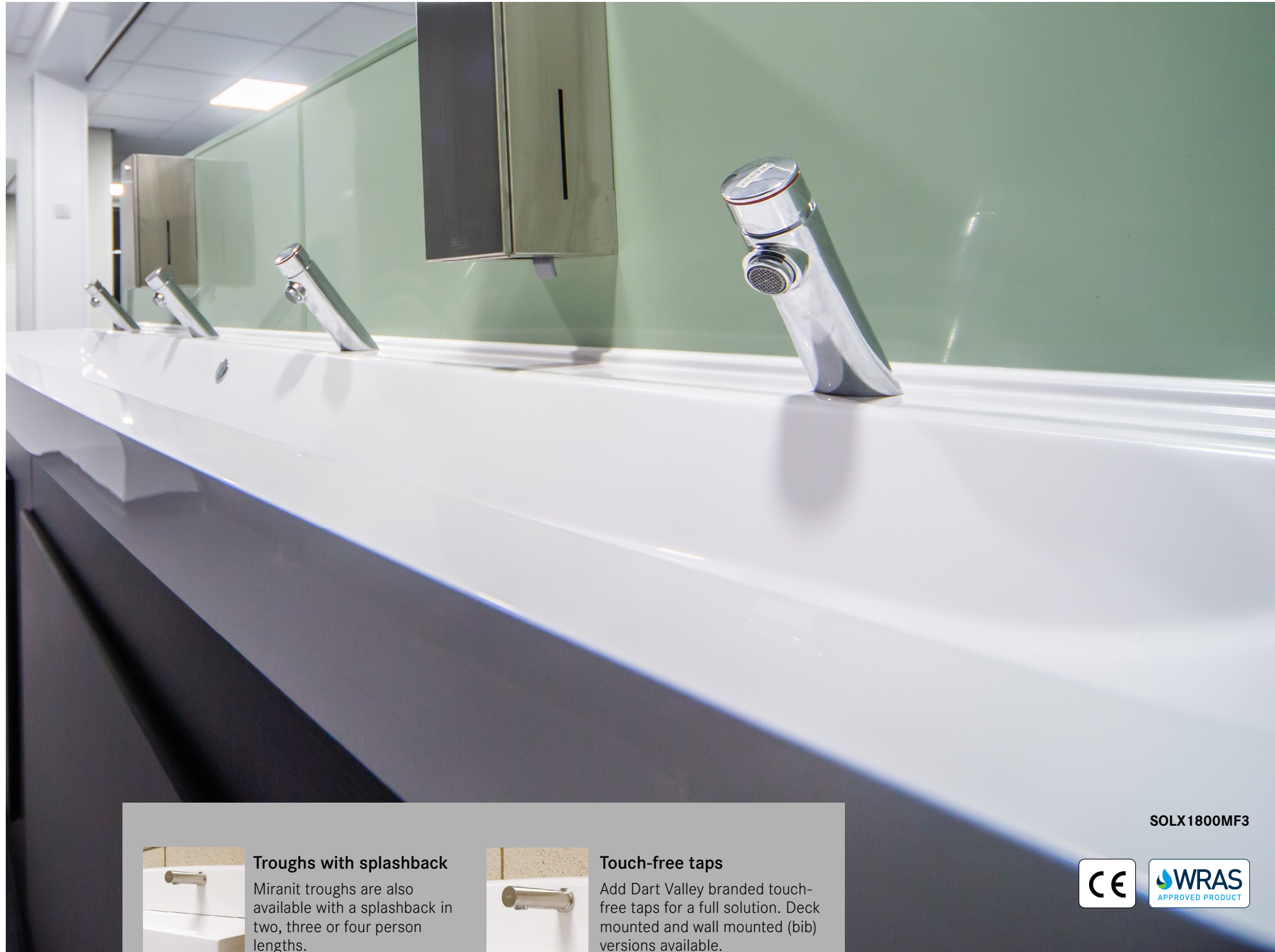


ANMW431



# MIRANIT COMPOSITE WASHTROUGHS

Stylish and practical



**2 PERSON MIRANIT COMPOSITE WASHTROUGH**  
Trough dimensions: 1200 x 170 x 480mm (W x H x D)

<b>SOLX1200</b>	203.0000.217	Without tap holes
<b>SOLX1200T</b>	203.0000.226	With tap holes
<b>SOLX1200E</b>	203.0000.218	With electronic taps
<b>SOLX1200MF3</b>	203.0547.761	With self-closing taps



**3 PERSON MIRANIT COMPOSITE WASHTROUGH**  
Trough dimensions: 1800 x 170 x 480mm (W x H x D)

<b>SOLX1800</b>	203.0000.229	Without tap holes
<b>SOLX1800T</b>	203.0000.238	With tap holes
<b>SOLX1800E</b>	203.0000.230	With electronic taps
<b>SOLX1800MF3</b>	203.0547.762	With self-closing taps



**4 PERSON MIRANIT COMPOSITE WASHTROUGH**  
Trough dimensions: 2400 x 170 x 480mm (W x H x D)

<b>SOLX2400</b>	203.0000.241	Without tap holes
<b>SOLX2400T</b>	203.0000.249	With tap holes
<b>SOLX2400E</b>	203.0000.242	With electronic taps
<b>SOLX2400MF3</b>	203.0547.763	With self-closing taps

SOLX1800MF3



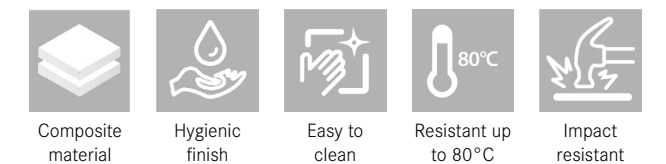
**Troughs with splashback**  
Miranit troughs are also available with a splashback in two, three or four person lengths.



**Touch-free taps**  
Add Dart Valley branded touch-free taps for a full solution. Deck mounted and wall mounted (bib) versions available.

**MIRANIT COMPOSITE WASHTROUGHS**

Manufactured from a robust solid surface material Franke's SOLX Miranit washtroughs are ideal for any workplace washroom area, providing a full hand washing solution. Available in 2, 3 or 4 person wash stations the troughs are ideal for any multiple WC washroom no matter the size. Different options available; with or without tap holes, with electronic or self-closing taps and splash-back options.





# RONDATOP AND QUADROTOP

Suitable for modern office environments



## QUADROTOP COUNTERTOP BASIN

Countertop basin manufactured from Miranit composite material. No silicone required due to the integrated invisible seal.

Bowl dims: 355 x 100 x 535mm (W x H x D)

**ANMT4001** 203.0601.044 Without overflow

**ANMT4002** 203.0601.041 With overflow



## RONDATOP COUNTERTOP WASHBASIN

Countertop basin manufactured from Miranit composite material. No silicone required due to the integrated invisible seal.

Bowl dims: 355 x 100 x 355mm (W x H x D)

**ANMT2001** 203.0598.590 Without tap ledge

**ANMT2002** 203.0598.591 With tap ledge

## MODERN COMPOSITE WASHBASINS

The RONDatop and QUADROtop countertop washbasins provide a modern design along with hygiene benefits. These eye catching centrepieces have been designed with a unique, integrated seal, providing a streamlined and hygienic finish with easy installation, making additional sealing with silicone a thing of the past. If you're designing a new office block, these basins are the ideal choice to provide a modern look and finish.

Manufactured from Miranit composite material, the solid surface basins easily transform the whole washroom and can revamp the overall look and space. Miranit is a poured material and manufactured using a single mould creating a finished product without any adhesive seams or joints. Complement the washbasins with an elevated tap from the F5 range.



Composite material



Hygienic and easy to clean



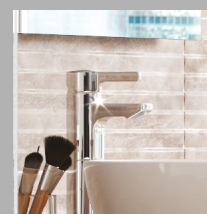
Resistant up to 80°C



Impact resistant



No silicone required



### Extension piece

In order to get the most modern and stylish solution, we have designed an extension piece for our F5 tap to suit Rondatop and Quadrotop basins and elevate the height of the tap for a complete wonderful solution.

**ACLM1010** 208.0599.909 140mm extension piece for F5L-Mix

ANMT4001



# PLANOX WASHTROUGHS

Robust stainless steel troughs ideal for factory and industrial toilets

## Stainless steel washtroughs

The Planox range of washtroughs offers a functional, easy-to-clean and user-friendly solution whilst ensuring optimum hygiene. Manufactured from 1.2mm thick grade 1.4301 (304) stainless steel with a satin polished finish, these troughs can withstand high usage areas and busy areas such as factory or industrial washrooms. The troughs are seamlessly welded using an innovative robotic laser, making them highly resistant to dirt and bacteria. The 1cm lowered tap ledge stops water from spilling on to the floor, preventing hazards and maintaining excellent levels of hygiene.

### Planox washtroughs

<b>PL6T-UK</b>	203.0564.759	600mm trough with tap ledge
<b>PL8T-UK</b>	203.0564.760	800mm trough with tap ledge
<b>PL12T-UK</b>	203.0563.654	1200mm trough with tap ledges
<b>PL16T-UK</b>	203.0564.761	1600mm trough with tap ledge
<b>PL18T-UK</b>	203.0564.762	1800mm trough with tap ledge
<b>PL24T-UK</b>	203.0564.763	2400mm trough with tap ledge
<b>PL30T-UK</b>	203.0564.767	3000mm trough with tap ledge

Also available with deck mounted taps, see brassware on pages 20-25

### Planox washtroughs with bib taps






<b>PL6-UK</b>	203.0564.719	600mm trough without tap ledge
<b>PL8-UK</b>	203.0564.751	800mm trough without tap ledge
<b>PL12-UK</b>	203.0564.752	1200mm trough without tap ledge
<b>PL16-UK</b>	203.0564.754	1600mm trough without tap ledge
<b>PL18-UK</b>	203.0564.755	1800mm trough without tap ledge
<b>PL24-UK</b>	203.0564.757	2400mm trough without tap ledge
<b>PL30-UK</b>	203.0564.758	3000mm trough without tap ledge

Also available with bib taps, see brassware on pages 20-25

## Optional shrouds

Conceal plumbing by adding a shroud (available in two sizes).

<b>PL-SHROUD LRG</b>	203.0563.655	23 x 305 x 244mm
<b>PL-SHROUD SML</b>	203.0564.788	123 x 305 x 241mm

				
304 stainless steel	Bespoke lengths	Hygienic material	Easy to clean	Seamlessly welded



Bespoke lengths between 600mm and 3000mm, with/without splashback or tap ledge are also available. Please call us on 01246 458900 to discuss your requirements.

PL24-UKMF3



**Stratos touch-free soap dispenser**

Infrared touch-free sensor activation and 800ml tank.

**STRX625** 201.0000.026



**Stratos touch-free paper towel dispenser**

Infrared sensor and integrated tear-off edge.

**STRX630** 201.0000.006

# COMPLETE ANY WASHROOM

## Manual and self-closing taps

### F3 and F5 range of taps

In highly frequented washrooms, it is important to choose taps which reduce the impact of water wastage and vandalism whilst ensuring efficient hygiene. The F5 range of taps excel in functionality and style and come in three ranges; electronic, self-closing and lever taps. All Franke F5S self-closing taps have been designed with the patented Franke Modular Innovation Cartridge (FRAMIC). The cartridge ensures stagnation-free, hydraulic control of the water flow and sets the highest hygiene standards.

The F3 range has been designed with a classic look in mind. The traditional and elegant design of the F3 self-closing mixer taps are ideal for smaller washroom environments such as visitors centres.



\*F5S taps only



#### F5S SELF-CLOSING PILLAR MIXER\*

F5S-Mix self-closing pillar mixer with adjustable, turn-proof temperature stop. Designed with the FRAMIC self-closing cartridge. Nominal 5 litres per minute flow rate.

**F5SM1001** 208.0563.593



#### F5S SELF-CLOSING PILLAR TAP\*

F5S self-closing pillar tap (pre-mixed) with adjustable flow duration. Designed with the FRAMIC self-closing cartridge. Nominal 5 litres per minute flow rate.

**F5SV1001** 208.0563.594



#### F5L-MIX PILLAR LEVER TAP

Designed with a mixing cartridge with ceramic disc technology and thermostatic protection from scalding. Nominal 5 litres per minute flow rate.

**F5LM1001** 208.0563.550 100mm project.

**F5LM1002** 208.0563.591 125mm project.



#### F3S SELF-CLOSING PILLAR TAPS

Hydraulically controlled self-closing function which prevents water from flowing back through the system. Nominal 3 litres per minute flow rate.

**F3SM1001** 208.0563.601 mixer tap

**F3SV1001** 208.0519.518 pre-mixed



F5EM1001



#### \*The Franke Modular Innovation Cartridge (FRAMIC)

The ceramic self-closing cartridge is the first of its kind in tap disc technology and enables a stagnation-free, hydraulic control of water flow ensuring perfect water hygiene. The operation of the cartridge is flow pressure-independent meaning drinking water is kept completely separate to the functional elements of the tap.



# COMPLETE ANY WASHROOM

## Hygienic, touch-free and water saving taps

### High performance touch-free taps

Hand washing has never been so important as it is today. The touch-free range of taps provides ultimate flexibility in any washroom environment. With three different ranges; F5E, Aquarius wall mounted straight spouts and the Classic range there is a solution for any size or type of washroom. The range of taps are all electronically controlled and provide a hygienic touch-free hand washing solution even in the busiest of environments. These WRAS approved taps come in a range of finishes, from satin and high polish grade 316 stainless steel to high polished chrome plated brass. The range is fully programmable with additional functions such as hygiene purge, lockouts and anti-vandal features. DVS and Franke hand held programmable remotes are sold separately.



#### AQUARIUS 45° SPOUT

Touch-free spout with a satin finish and PEX hoses. Nominal 5 litre per minute flow rate.\*

**AT03-011** 208.0000.080 140mm project.



#### AQUARIUS STRAIGHT SPOUT

Touch-free spout with a satin finish and PEX hoses. Nominal 5 litre per minute flow rate.\*

**AT02-001** 208.0000.077 150mm project.  
**AT02-011** 208.0606.402 200mm project.



#### F5E-MIX ELECTRONIC PILLAR MIXERS

For connecting to hot and cold water via connecting hoses, with an integrated backflow preventer. Nominal 5 litres per minute flow rate.

**F5EM1001** 208.0563.548 battery  
**F5EM1003** 208.0563.549 mains



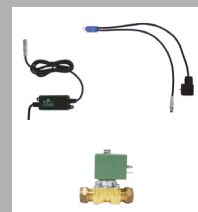
#### CLASSIC SWAN TAP

Touch-free Classic Swan taps with PEX hoses and nominal 5 litre per minute flow rate. Manufactured from chrome plated brass.\*

**AT01-011** 208.0617.515 145mm project.  
**AT01-001** 208.0481.307 145mm project.



AT03-011



#### Mains and battery kits

\*Mains or battery kits are required for Aquarius and Classic touch-free taps.

<b>AT00-001</b>	214.0544.450	Single station battery kit (1-6 bar brass valve)
<b>AT00-002</b>	230.0488.320	Single station mains kit (1-6 bar brass valve)
<b>AT00-003</b>	230.0000.061	Two station mains kit (1-6 bar brass valve)
<b>AT00-004</b>	230.0000.062	Three station mains kit (1-6 bar brass valve)

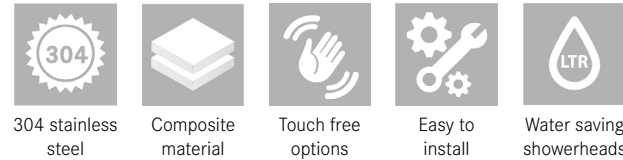


# SHOWER PANELS

## Contribute to employee wellbeing

### Showering facilities for employees

Providing shower facilities to staff is a great way to reward employees, shower and changing facilities are ideal for office spaces in big cities and employees who like fitness and may either run or cycle to work. Offering shower facilities is a great choice for new and modern buildings but also existing offices, particularly with our shower panels which can be easily integrated. The range of F5 and DVS branded range of showers offer a modern, easy to use solution. Designed with quality materials and is available in either Miranit composite or stainless steel are that are able to withstand high footfall and continuous use. Along with robust materials the F5 shower range offers a high energy efficiency and sustainability solution when pair with our water saving shower heads.



304 stainless steel   Composite material   Touch free options   Easy to install   Water saving showerheads



#### F5S MIX MIRANIT SHOWER PANEL

Miranit shower panel for wall mounting with DN 15 self-closing single control mixer and connecting nozzles for the shower head. Shower head sold separately\*.

**F5SM2026** 210.0629.599

#### F5S MIX STAINLESS STEEL SHOWER PANEL

Stainless steel shower panel for wall mounting with DN 15 self-closing single control mixer and connecting nozzles for the shower head. Shower head sold separately\*.

**F5SM2020** 210.0629.600



#### F5E THERM STAINLESS STEEL SHOWER PANEL

Stainless steel shower panel for wall mounting with thermostatic mixer and connecting nozzles for the shower head. Shower head sold separately\*.

**F5ET2020** 210.0629.651

#### CEILING HEIGHT SHOWER TOWER WITH TACTILE SWITCH

Ceiling height shower tower with high security shower head and tactile switch. With concealed pipework, ligature resistant design and in-built TMV3.

**SH01-005** 210.0611.633



SH01-005



#### \*Aquajet slimline

Shower head with plastic jet face with anti-limescale system and low aerosol formation.

**SHAS0011** 210.0588.383



#### \*Aquajet comfort

Adjustable shower head (13-23°) with anti-limescale system and low aerosol formation.

**SHAC0011** 210.0588.384



# ACCESSORISE

Stylish and robust washroom accessories



**EXOS.** - Available in three colours; black, white and stainless to suit all styles.



**Stratos** - Rounded style, finished with Inoxplus anti-fingerprint coating

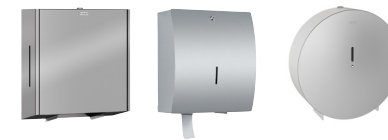


**Rodan** - Classic style, designed to suit a variety of environments.

CHR670

## High quality stainless steel accessories

Accessories are a vital part of any washroom and breaking away from mismatching sanitaryware and accessories can separate your washroom from the rest. Adding coordinating ranges of accessories such as matching soap dispensers, hand dryers and waste bins can bring the room to life and add value to the whole washroom.



### JUMBO TOILET ROLL HOLDER

<b>EXOS670X</b>	201.0479.701	Exos.
<b>STRX670</b>	201.0000.060	Stratos
<b>CHR670</b>	201.0000.059	Rodan



### DOUBLE TOILET ROLL HOLDER

<b>EXOS676X</b>	201.0479.684	Exos.
<b>EXOS676B</b>	201.0479.685	Exos.
<b>EXOS676W</b>	201.0479.687	Exos.
<b>STRX672</b>	201.0515.181	Stratos
<b>RODX672</b>	201.0000.056	Rodan



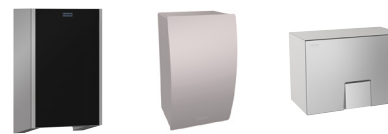
### LIQUID SOAP DISPENSER

<b>EXOS618X</b>	201.0000.041	Exos.
<b>EXOS618B</b>	201.0000.039	Exos.
<b>EXOS618W</b>	201.0000.040	Exos.
<b>STRX619</b>	201.0000.024	Stratos
<b>RODX619</b>	201.0000.017	Rodan



### HAND TOWEL DISPENSER

<b>EXOS637X</b>	201.0000.047	Exos.
<b>EXOS637B</b>	201.0000.045	Exos.
<b>EXOS637W</b>	201.0000.046	Exos.
<b>STRX600</b>	201.0515.168	Stratos
<b>RODX600</b>	201.0000.000	Rodan



### HAND DRYER

<b>EXOS220X</b>	201.0479.675	Exos.
<b>EXOS220B</b>	201.0479.676	Exos.
<b>EXOS220W</b>	201.0479.677	Exos.
<b>STRX220</b>	201.0473.301	Stratos
<b>RODX310</b>	201.0000.132	Rodan



### WASTE BIN


<b>EXOS605X</b>	201.0000.035	Exos.
<b>EXOS605B</b>	201.0000.033	Exos.
<b>EXOS605W</b>	201.0000.034	Exos.
<b>STRX607</b>	201.0000.078	Stratos
<b>RODX607</b>	201.0000.089	Rodan



# SOAP AND SANITISER DISPENSERS

Robust, elegant and touch-free washroom accessories



 <p>SANITISER DISINFECTANT</p>	<b>SO10L</b>	220.0000.000	Replacement liquid soap (10L)
	<b>AC00-052</b>	201.0624.809	Replacement hand sanitiser 70% alcohol
	<b>AC00-008</b>	201.0631.912	Alcohol-free gel sanitiser



## VANDAL RESISTANT TOUCH-FREE SOAP AND SANITISER DISPENSER

Stainless steel touch-free dispenser. 800ml refill tank.

**AC00-030** 201.0615.051



## EXOS. TOUCH-FREE SANITISER/SOAP DISPENSERS

Stainless steel touch-free dispensers. 800ml refill tank.

**EXOS627X** 201.0631.106 Sanitiser dispenser-steel front

**EXOS625X** 201.0000.044 Soap dispenser - steel front

**EXOS625B** 201.0000.042 Soap dispenser - black front

**EXOS625W** 201.0000.043 Soap dispenser - white front

**EACCS055** 230.0601.308 Sanitiser conversion kit



## STRATOS TOUCH-FREE SANITISER/SOAP DISPENSERS

Stainless steel touch-free dispenser. 800ml refill tank.

**STRX627** 201.0631.105 Sanitiser dispenser

**STRX625** 201.0000.042 Soap dispenser

**EACCS057** 230.0598.604 Sanitiser conversion kit



## RODAN TOUCH-FREE SANITISER/SOAP DISPENSERS

Stainless steel touch-free dispensers. 800ml refill tank.





**RODX627H** 201.0615.053 Sanitiser dispenser

**RODX625H** 201.0622.783 Soap dispenser

**EACCS055** 230.0601.308 Sanitiser conversion kit

## WALL MOUNTED SOAP AND SANITISER DISPENSERS

Maximise hand hygiene with the Franke range of soap and sanitiser dispensers. Manufactured from high quality stainless steel, this durable touch-free range of soap and sanitiser dispensers release a predefined amount of soap when triggered. The four different styles enable a perfect fit for any washroom whether it be a small family run business or large corporate office.

			
Touch free operation	304 stainless steel	Hygienic material	Easy to clean

EXOS627X



# KEEP STAFF HYDRATED

Drinking fountains for all types of workplace



### BREEAM fixing kit

Breeam fixing kit for floor standing chilled drinking fountains. The fixing kit allows the drinking fountain to be placed against the wall and floor, concealing any pipe work or wires, adhering to BREEAM criteria. Dimensions: 354 x 924 x 100 mm (W x H x D)

**ANMX315** 213.0000.000



ANMX309



### STAINLESS STEEL CENTINEL DRINKING FOUNTAIN

Manufactured from 1.2mm thick grade 304 stainless steel. Supplied complete with 19mm waste.

**G20100N** 213.0000.011 Bubbler only

**G20109N** 213.0000.013 Bubbler & bottle filler



### STAINLESS STEEL DRINKING FOUNTAIN

Manufactured from 1.2mm thick grade 304 stainless steel. Designed with a flat pressed rectangular top with rounded edges.

**ANMX300** 213.0000.024 Bubbler only

**ANMX306** 213.0000.002 Bubbler & bottle filler



### STAINLESS STEEL DRINKING FOUNTAIN WITH PEDESTAL

Manufactured from 1.2mm thick grade 304 stainless steel. Designed with a flat pressed rectangular top.

**ANMX301** 213.0000.025 Bubbler only

**ANMX307** 213.0000.003 Bubbler & bottle filler



### FLOOR STANDING CHILLED DRINKING FOUNTAIN WITH WATER FILTER

The fountain is for connection direct to the water mains to supply an unlimited amount of fresh chilled water.

**ANMX308** 213.0000.004 Bubbler only

**ANMX309** 213.0000.005 Bubbler & bottle filler

### FRANKE BRANDED DRINKING FOUNTAINS

The free-standing or wall-mounted drinking fountains, made of stainless steel, are the perfect addition to any workplace. Combined with bubblers and bottle fillers, they can quench the thirst of any employee. Fresh drinking water helps staff stay hydrated and can aid productivity, allowing employees perform better mentally and physically.



304 stainless steel



Chilled options



Easy to install



Breeam fixing kit available



# SANITARYWARE

Robust touch-free WCs, flushvalves and cistern kits



### Flush valve kit complete with sensor

Complete with wave on sensor and 1 1/2" base flush valve, control box and 3 metre cable. Other kits are available with tactile or programmable operations and alternative base size. See [www.dartvalley.co.uk](http://www.dartvalley.co.uk) for more information.

**WC03-002** 209.0583.506



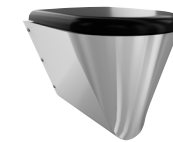
### CAMPUS FLOOR STANDING PUSH FIT WC PAN

Manufactured from grade 304 steel. Flushing certified to EN 997, concealed flushing rim with min. 4 litre flushing capacity.

**CMPX597B** 205.0000.012 Black seat and lid

**CMPX597G** 205.0000.013 Grey seat and lid

**CMPX597W** 205.0000.015 White seat and lid



### CAMPUS WALL MOUNTED PUSH FIT WC PAN

Manufactured from grade 304 steel. Flushing certified to EN 997, concealed flushing rim with min. 4 litre flushing capacity.

**CMPX592B** 205.0000.002 Black seat and lid

**CMPX592G** 205.0000.003 Grey seat and lid

**CMPX592W** 205.0000.005 White seat and lid



### CONCEALED PLASTIC CISTERN KIT

Kit includes; WRAS approved side entry valve, 2" to 1 1/2" flush pipe, back to pan connector, enhanced flushing concealed cistern kit (flush valve sold separately).

**WC02-014** 209.0610.923

### SANITARYWARE

Modern washrooms need to be functional, stylish and long lasting. Franke have designed a range of robust sanitaryware for a wide range of facilities, whether it be a simple renovation or complete washroom revamp.

Franke's stainless steel WCs are a perfect choice for any workplace washrooms. The range of grade 304 stainless steel sanitaryware is extremely robust and has been designed to match our range accessories, providing a modern industrial feel. The Dart Valley branded flush valves and cisterns can complete any busy washroom and provide a water saving solution.



304 stainless steel



Robust construction



Easy to clean



Easy to install



# STAINLESS STEEL URINALS

Save water with standard and waterless urinals



## URINAL POD

Stainless steel urinal pods.

<b>CMPX538WF</b>	205.0000.057	push fit, water-free
<b>CMPX538P</b>	205.0000.047	push fit, electronic
<b>CMPX538CD</b>	205.0000.044	push fit, duct mounted
<b>HDTX538P</b>	205.0000.052	bolt fix, electronic



## WATERLESS URINAL SLAB

Stainless steel waterless urinal slabs, easy to maintain with unique key system, available with left and right hand wastes.

<b>G20125L</b>	205.0560.088	1200mm left hand
<b>G20125R</b>	205.0000.066	1200mm right hand
<b>G20126L</b>	205.0553.762	1800mm left hand
<b>G20126R</b>	205.0553.763	1800mm right hand



## CENTINEL SLAB URINAL

Stainless steel urinal with concealed sparge pipe. Bespoke lengths and exposed sparge pipe options are also available.

<b>G20117N</b>	205.0000.058	1200 x 300 x 555mm (9l)
<b>G20123N</b>	205.0000.064	1500 x 300 x 555mm (9l)
<b>G20118N</b>	205.0000.059	1800 x 300 x 555mm (13.5l)
<b>G20119N</b>	205.0000.060	2400 x 300 x 555mm (13.5l)

## STAINLESS STEEL URINALS

Over half of 'domestic' water used in commercial premises can be due to urinals operating without flush controls. Adding the correct flush controls such as DVS Flushmatic, or installing waterless products can vastly reduce water bills with minimal initial outlay, particularly in busy office environments.

All Franke branded urinals are manufactured from robust 1.2mm thick grade 1.4301 (304) stainless steel with a satin finish. The urinals have been specifically designed for easy installation and maintenance.



### Urinal control system

Two station urinal control kit, complete with mains control box, two solenoid valves & two sensors, for direct flushing.

**UC07-011** 205.0611.714



### Urinal flush controls

Flushmatic surface mount kit in White - battery complete with solenoid valve, for cistern fed flushing.

**UC01-005** 205.0611.714

CMPX538P



Water saving



Efficient design



304 stainless steel



Easy maintenance



Robust material

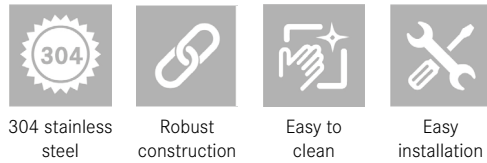


# CATERING SOLUTIONS

## Office canteen and dining areas

### Catering and hand washing

Franke Water Systems has a range of solutions for workplaces and shared office buildings with kitchens, canteens and food halls. When working with food processing on a daily basis or having multiple users, continuous hygiene is an obvious requirement. Functionality, material selection and easy cleaning are essential for equipment in the food processing industry in order to guarantee the continuous high quality of the food being produced. The range includes catering sinks, preparation tables and a variety of wall shelves. Manufactured from grade 304 stainless steel, this material is highly durable, resistant to corrosion and long lasting. Stainless steel is the perfect material for any large kitchen or catering environment and with a range of inset basins, optional supports, stands and shelves (sold separately) and complementary parts including taps and waste kits provide a full solution.



304 stainless steel   Robust construction   Easy to clean   Easy installation



#### SINGLE BOWL SINGLE DRAINER MINI CATERING SINK

Manufactured from 1.2mm thick austenitic grade stainless steel polished to a satin finish. Dimensions: 1000 x 900 x 600mm (W x H x D)\*

<b>E20601L</b>	214.0000.000	Left hand drainer
<b>E20601R</b>	214.0000.000	Right hand drainer



#### REVERSIBLE SINKS

Manufactured from grade 304 stainless steel these multi-purpose sinks are ideal for canteens or staff room sinks.

<b>F0306NP</b>	203.0529.988	Single bowl sink
<b>F0309NP</b>	203.0529.985	Bowl 1/2 sink



#### MINI WALL TABLES

Mini wall tables are manufactured from 1.2 thick austenitic grade stainless steel polished to a satin finish.\*

<b>F20601Z</b>	214.0000.121	1200 x 900mm
<b>F20600Z</b>	214.0000.119	900 x 600mm



#### WALL SHELVES

Manufactured from 1.2mm thick grade 1.4016 (430) stainless steel polished to a satin finish.

<b>F10512N</b>	214.0000.168	900 x 300mm
<b>F10515N</b>	214.0000.171	1800 x 300mm

Additional variants and sizes are available, please get in touch to request more information.

\*Stand pack sold separately.



#### Bespoke solutions

For workplace canteens and staff kitchens we can create fully bespoke solutions including stainless steel worktops with integrated sinks to suit your space. Get in touch on 01246 458900 or [ws-info.uk@franke.com](mailto:ws-info.uk@franke.com) to discuss your requirements with a member of our team.



# CLEANING SOLUTIONS

## Stainless steel janitorial and cleaning



### FLOOR STANDING STAINLESS STEEL JANITORIAL UNIT

Manufactured from grade 1.4301 (304) stainless steel (lower bowl 0.9mm thick) complete with monobloc mixer.

**G20050N** 207.0000.058



### FLOOR STANDING STAINLESS STEEL BUCKET SINK

Manufactured from grade 1.4301 (304) stainless steel, material thickness 1.2mm, with splash back, hinged grating, 38mm BSP waste fitting.

**G21663N** 207.0000.060

### MAINTENANCE

Maintenance is key in any large workplace with a high number of employees. Behind the scenes of any office, factory or industrial place of work are cleaning facilities which are absolutely vital in order to keep hygiene standards to a maximum. Ensure you have the correct products that will last for years to come and provide the maintenance staff with the correct tools to carry out a high standard of cleaning with Franke's range of janitorial and utility products.

Franke's cleaning and janitorial range includes general kitchen sinks, bucket and cleaners sinks, janitorial units and a variety of utility sinks. All manufactured from grade 304 stainless steel these products guarantee the best quality.



#### Crosshead bib taps

Complete the bucket sink with bib taps. Conforms to BS5412 standard.

**F1071/3N** 208.0574.188



#### Monobloc mixer

Add a mixer tap to canteen or staff room sinks. Conforms to BS5412 standard.

**F1059N** 208.0574.216

G20050N



316 lab sinks



Easy to clean



Low maintenance



Compliant products



Make  
it  
Wonderful

#### NORTHERN OFFICE

Franke Water Systems  
14 Napier Court  
Gander Lane  
Barlborough  
S43 4PZ  
Phone +44 (0)1246 458900  
ws-info.uk@franke.com  
www.franke.co.uk

#### SOUTHERN OFFICE

Dart Valley Systems  
Kemings Close  
Long Road  
Paignton, Devon  
TQ4 7TW  
Phone +44 (0) 1803 529021  
sales@dartvalley.co.uk  
www.dartvalley.co.uk

