

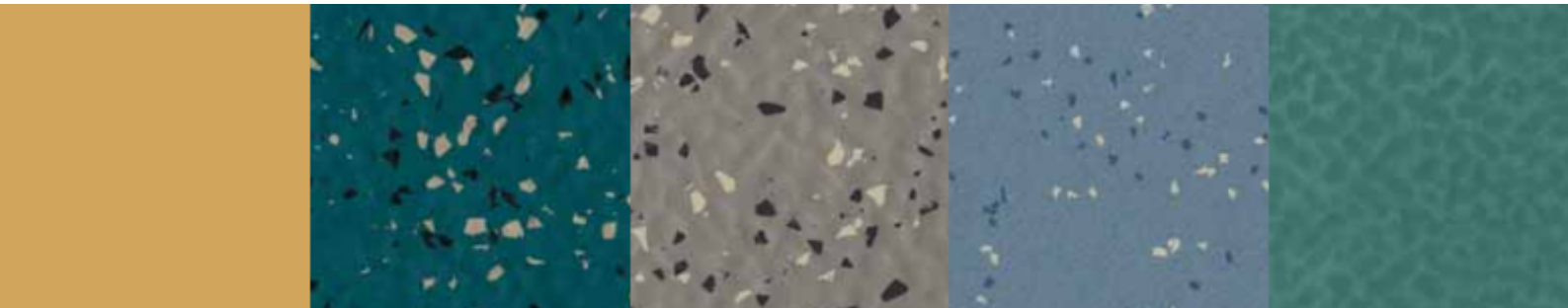


Jaymart

**Rubber
Flooring
Systems**

Duo-Floor

**Rubber Flooring
Colours &
Technical
Information**



Tough choice

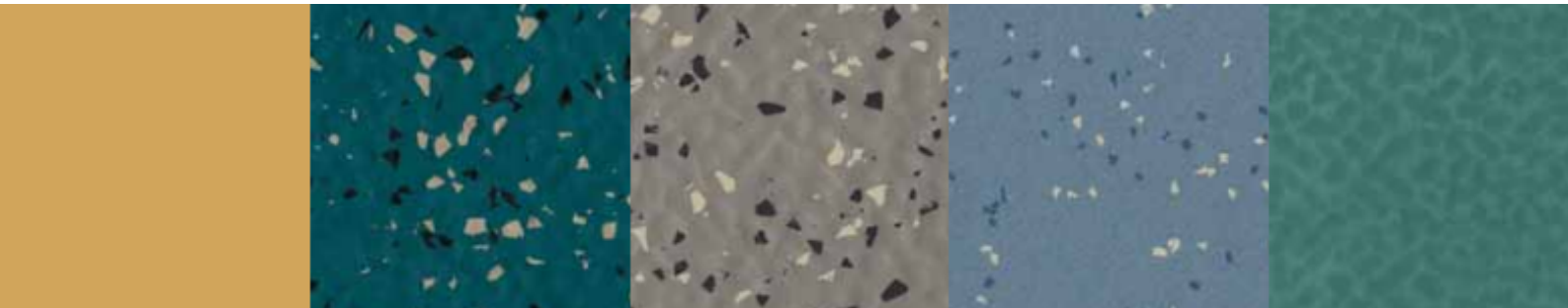
For decades, rubber flooring has been one of the world's most popular hard-surface flooring types for a wide variety of indoor situations, such as airports, department stores, kindergartens, schools, hospitals, offices and residential buildings. Now, after many years of research, development and heavy testing, Jaymart brings you a new generation of rubber floorings. Jaymart's Rubber Collection is a range of innovative products that are tougher, more flexible and more suitable in more situations than ever before. These floorings are made of natural and synthetic rubber, using eco-friendly colour pigments and mineral fillers, yet every product in Jaymart's range is characterised by its increased load-bearing capacity and suitability for installation under the most varied and difficult conditions. In heavy traffic situations, rubber flooring has for a long time been the obvious choice. It's safe, durable, flexible, low maintenance, and it's tough. Now, with the range and improved characteristics of Jaymart's rubber flooring, making a tough flooring choice has never been easier



Responsible choice

Jaymart's rubber flooring has been developed to improve performance and safety while also being more ecologically responsible. It has a lifetime cost that is well below most other flooring materials, and can also now be used in nearly any flooring application, including directly above under-floor heating. The floorings are compatible with eco-friendly and solvent-free dispersion adhesives, they contain no PVC, formaldehyde, cadmium, asbestos, CFHC or plasticisers, and will not release any harmful substances in any situation.

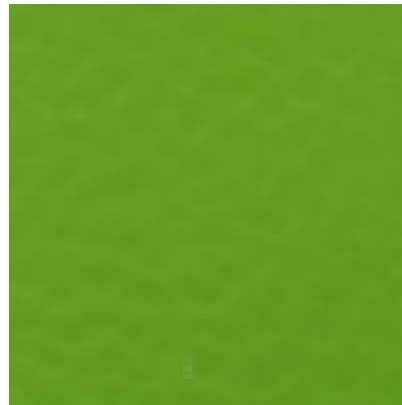




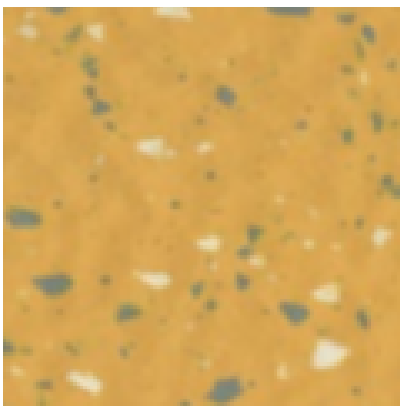
Versatile choice

Rubber is a versatile, heavy duty, environmentally friendly floorcovering.

Jaymart can offer a wide range of rubber flooring in rolls and tiles, in an extensive and vibrant colour palette for use in every application imaginable such as Gyms, Airports, Banks, Barracks, Public Buildings, Apartment Blocks, Chain Stores, Cinemas, Colleges, Office Buildings, Department Stores, Factories, Hospitals, Hotels, Homes, Sports and Leisure Centres, Stadia, Theatres, Universities



At A Glance

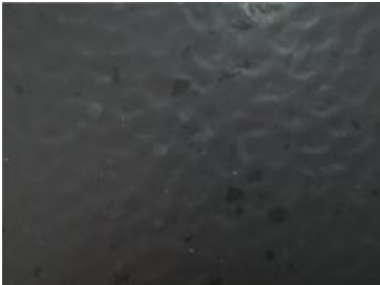


Our range of rubber flooring offers the following key features and benefits

- Rubber is extremely durable and hardwearing leading to long life expectancy and further conservation of material resources.
- Jaymart rubber flooring is coated with a factory applied finish to prevent marking and making it easier to maintain reducing cleaning costs and use of harmful chemicals to maintain the floorcovering.
- Rubber is environmentally friendly - it contains no PVCs, Plasticers or halogens. Leading to a healthier environment in the application
- Toxologically safe
- Flame retardant – Rubber flooring guarantees low Opacity and smoke toxicity in the case of fire.
- Good resistance to chemicals (Even diluted acids!) and oils

Jaymarts range of superior quality rubber flooring is a bespoke range made especially for your project. Available in a phenomenal range of designs and colours there is something for every type of project and application. We can also work with you on bespoke colours subject to minimum order quantities. Please consult with our technical team for more information.

DUOFLOOR



DF 32



DF 110



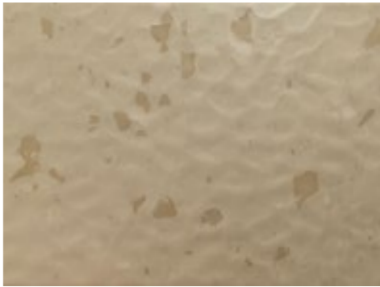
DF 107



DF 12



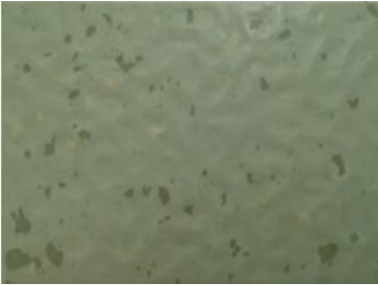
DF 117



DF 105



DF 11



DF 126



DF 103

Duofloor is a heavy duty tile with non-directional colour chips inset into a hammerblow surface. The textured surface has been designed to limit the extent of light reflections



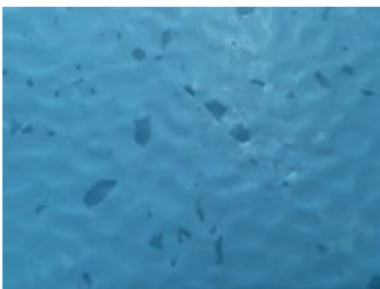
DF 125



DF 114



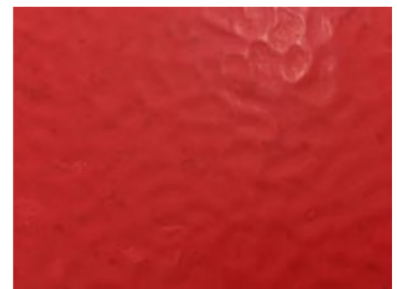
DF 20



DF 115



DF 512



DF 124



DF 118



DF 112



DF 106

 500x500 | 1000x1000mm
  2,5 mm
  kg/m² 4,00
 500x500 | 1000x1000mm
  3,5 mm
  kg/m² 5,50

 EN 14041
 








Proprietà secondo EN 14 041/EN 12 199/EN 1817 <i>Properties according to EN 14 041/EN 12 199/EN 1817</i>	Norma di prova <i>Test method</i>	U.m. & Requisiti <i>U.m. & Requirements</i>	Valori medi risultati da collaudi della produzione in corso <i>Average test results from running production</i>	
Spessore <i>Thickness</i>	UNI EN ISO 24346 (Ex. EN 428)	Valore medio senza retro espanso $\pm 0,15$ mm	2,5 mm	3,5 mm
Durezza <i>Hardness</i>	UNI EN ISO 7619-1	≥ 70 Shore A	88 \pm 3	
Resistenza all'abrasione a 5 N di carico <i>Abrasion resistance at 5 N load</i>	ISO 4649 Procedura A <i>Procedure A</i>	≤ 250 mm ³	160 mm ³	
Impronta residua <i>Residual indentation</i>	UNI EN ISO 24343 (Ex. EN 433)	Valore medio $\leq 0,20$ mm a spessore $\geq 2,5$ mm <i>Mean value $\leq 0,20$ mm at thickness $\geq 2,5$ mm</i>	0,050 mm	0,080 mm
Stabilità dimensionale <i>Dimensional stability</i>	UNI EN ISO 23999 (Ex. EN 434)	$\pm 0,4\%$	$\pm 0,3\%$	
Flessibilità <i>Flexibility</i>	UNI EN ISO 24344 (Ex. EN 435 Procedura A - Procedure A)	Diametro del mandrino 20 mm nessuna formazione di fessura <i>Mandrel diameter 20 mm no fissuring</i>	Conforme <i>Fulfilled</i>	
Resistenza alla lacerazione <i>Tear strength</i>	ISO 34-1 Procedura A, Metodo B <i>Procedure A, Method B</i>	Valore medio ≥ 20 N/mm <i>Mean value ≥ 20 N/mm</i>	Conforme <i>Fulfilled</i>	
Solidità dei colori alla luce artificiale <i>Color fastness to artificial light</i>	ISO 105-B02 Procedura 3 <i>Procedure 3</i>	Almeno 6 sulla scala del blu; \geq livello 3 sulla scala del grigio (= 350 MJ/m ²) <i>At least level 6 on the blue scale; \geq level 3 on the grey scale (= 350 MJ/m²)</i>	Conforme <i>Fulfilled</i>	
Resistenza alla brace di sigaretta <i>Cigarette-burn resistance</i>	EN 1399 Procedura A - B <i>Procedure A - B</i>	Procedura A [espulso] \geq livello 4 Procedura B [in fiamme] \geq livello 3 <i>Procedure A [stubbed out] level \geq 4 Procedure B [burning] level \geq 3</i>	Conforme <i>Fulfilled</i>	
Tossicità fumi <i>Smoke toxicity</i>	BS 6853 Ann. B.2	≤ 5 R	Conforme <i>Fulfilled</i>	
Classificazione <i>Classification</i>	UNI EN ISO 10874 (Ex. EN 685)	Abitazioni - Negozi - Industrie <i>Residential - Commercial - Industrial</i>	23/32/42	23/34/43
Resistenza alla trasmissione del calore <i>Thermal conductivity</i>	DIN 52 612	-	0,022 m ² K/W	
Reazione alle sostanze chimiche <i>Effect of chemicals</i>	UNI EN ISO 26987 (Ex. EN 423)	-	Dipende dalla concentrazione e dal tempo d'azione <i>Resistant depending on concentration and time of exposure</i>	
Fattore di correzione del rumore da calpestio <i>Improvement in footfall sound absorption</i>	UNI EN ISO 10140-3 (Ex. ISO 140 - 8)	-	6 dB	12 dB
Proprietà elettro-isolante <i>Electrical insulation properties</i>	IEC 60093	-	$> 10^{10}$ Ohm	
Carica elettrostatica da calpestio <i>Electrical propensity when walked upon</i>	EN 1815	-	Antistatico, carica elettrostatica in caso di soles in gomma ≤ 2 KV <i>Antistatic - charging in case of rubber soles ≤ 2KV</i>	
Effetto sedia a rotelle <i>Effect of a castor chair</i>	EN 425	-	Prova di rulli, tipoW, conformi alla norma EN 12529 <i>Suitable if castor wheels, typeW, according to EN 12529 are used</i>	
Resistenza allo scivolamento <i>Slip resistance</i>	EN 13 893	$\geq 0,30$ DS	DS	
Classe antincendio <i>Reaction to fire</i>	EN 13 501 - 1	-	Bfl - s1 Appoggiato o incollato <i>Not bonded or Bonded</i>	

I DATI TECNICI POSSONO ESSERE SOGGETTI A MODIFICHE SENZA PREAVVISO
TECHNICAL DATA ARE SUBJECT TO CHANGE WITHOUT NOTICE

EN 12 199 Pavimenti di gomma con rilievo omogenei ed eterogenei
EN 12 199 Specification for homogeneous and heterogeneous profiled rubber floor coverings
EN 1817 Pavimenti di gomma lisci omogenei ed eterogenei
EN 1817 Specification for homogeneous and heterogeneous smooth rubber floor coverings

500x500 | 1000x1000mm  | 2,5 mm  kg/m² 4,00
500x500 | 1000x1000mm  | 3,5 mm  kg/m² 5,50

CE
EN 14041



EN 685



23



34



43





Jaymart



**Jaymart Rubber &
Plastics Limited**
**Roman Way, Crusader
Park,**
Warminster
BA12 8SP

Tel 01985 218994
Email:
sales@jaymart.co.uk
www.jaymart.co.uk