

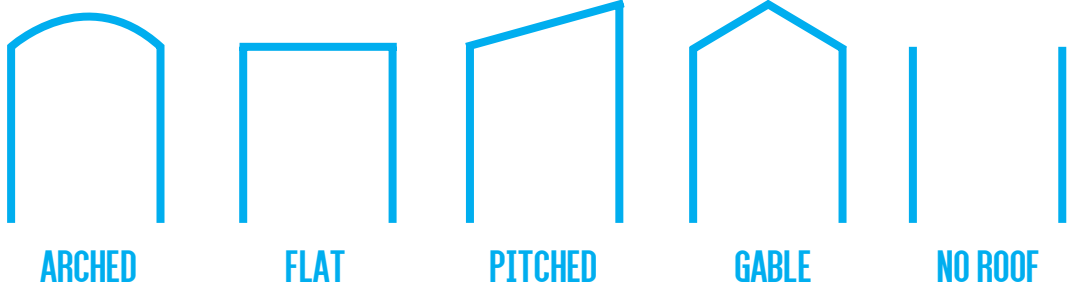
CYCLE HUBS

Our Cycle Hubs are the cutting edge in high volume bike storage facilities. We provide a range of technology and equipment that can be used to create maximum security, access control, data recording and cyclist friendly amenities. Every hub has to be carefully designed to fit bespoke requirements and needs, so there is no such thing as a generic cycle hub. This is why we have created the ability to customise your hub by designing the individual components, so you can pick and choose exactly what goes into your hub!



ROOF STYLE

Several roof styles are available to customise your cycle hub, from no roof (ideal for Cycle Hubs built under a pre-existing structure) to gabled or arched. Pitch height can also be determined to fit your requirements.



ARCHED

FLAT

PITCHED

GABLE

NO ROOF

DESIGN

CLADDING STYLE

We provide cladding options to suit all environments. For conservation areas, a wood, composite or glass cladding is usually preferred. For public areas, perforated steel, glass or Kalzip are ideal as they allow for passive surveillance.



METAL SHEETING



GLASS



PET G



COMPOSITE



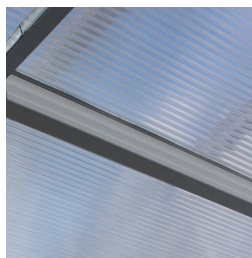
WOODEN PANELS

ROOF COVERING

As well as styles of roof, you can select your roof covering. PET G, chambered polycarbonate and metal roofing options are available as well as specialist green roofs.



GREEN ROOF



CHAMBERED
POLYCARBONATE



PET G



TRAPEZOIDAL
STEEL



DESIGN

LEWES STYLE HUB EXAMPLE SPECIFICATION

STRUCTURE

- Mild steel galvanised to BS EN ISO 1461:2009
- Powder coated BS EN 12206-1:2004
- Support columns 100 x 100 x 4mm
- Base plates 250 x 250 x 10mm
- Outer roof frame 120 x 60 x 4mm
- Unequal angle glazing flange 100 x 75 x 5

ROOF

- Metztec purlins 142 x 42 gauge lines 56
- Ziplock seam roof by Ridigal or similar, powder coated to match frame, insulated 140mm deep
- Hidden box gutter as per detail
- Cladding trims as per detail

GLAZING

- 12mm thick toughened and laminated single glaze panels, For secured by design rating increase to BS EN 356:2000 P2A - Supplier, Pilkington -Product -Optilam - Spec EN356 Class P2A
- Stainless glass connectors as per detail 304 Satin finish - counter sunk

FOUNDATION (suggestion as depends on location)

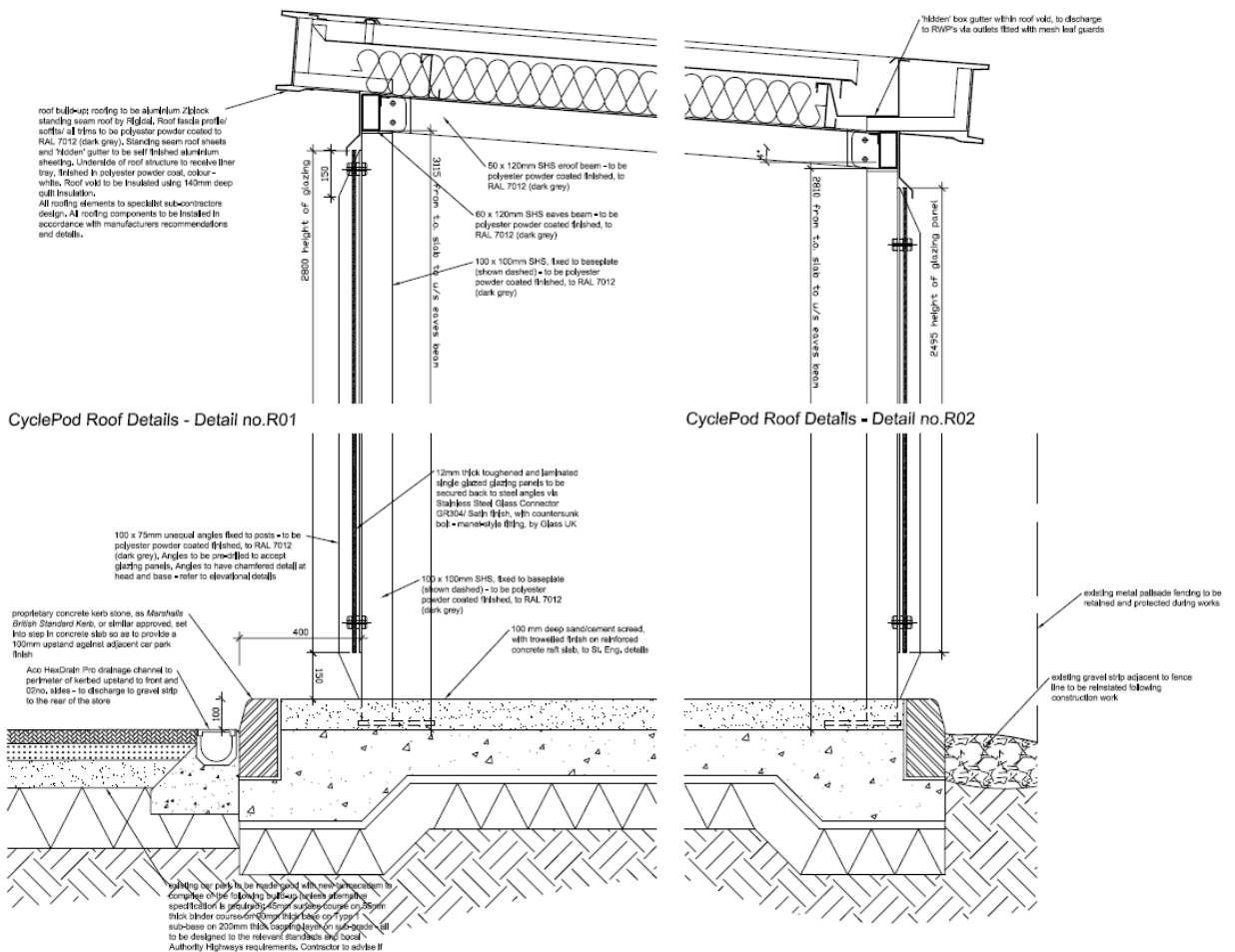
- Raft foundation as per detail - 250mm x 400mm decreasing to 150mm. 2 x A252 mesh
- Structural calculations on request

DOOR

- Sliding door option, security rated to PAS24:2012 for secured by design rating, tested to BS EN 1627/30.
- Suggested width 1500-1780 clear opening.

ACCESS CONTROL

- Cyclepods, Cycology division supplies a "cyclist" specific access control system which is design to work perfectly for cyclists and the provider of facilities such as this.
- Off the shelf access control products can also be used however Cyclepods highly recommends it specific access control technology.



CYCLE HUBS

STORAGE



**EASYLIFT
PREMIUM**

TWO-TIER CYCLE PARKING

Two-Tier storage maximises the amount of possible bike parking spaces in the available space. For most Cycle Hubs, this is the most appropriate storage system but it is important to ensure that a quality two-tier system is provided, preferably with gas-assisted lift, to ensure they are user-friendly and long-lasting. Cyclepods provide two types of two-tier storage systems: the Easylift Premium and the CapaCITY.



CAPACITY

Features	Easylift Premium	CapaCITY
User friendly	★★★	★★☆
Controlled hands-free descent	✓	
Noise dampening	✓	
Gas assisted	✓	✓
Ergonomically designed, non slip hand grips	✓	✓
Securing loop	✓	✓
Extra locking loop	✓	✓
Low loading height	31cm	37cm

SINGLE TIER CYCLE PARKING

There are several options for single tier storage. From traditional Sheffield stands to the Secured-by-Design approved Streetpod. Single storage options are most beneficial to Cycle Hub users with non-standard bicycles such as tandems, tricycles, cargo bikes and recumbent cycles. Cyclepods provide a range of options for single tier storage;



STREETPOD



SHEFFIELD STANDS



MOTU CARGO PARK

Cyclepods can provide low-voltage electricity systems for your Cycle Hub to keep them as cost-effective, low-maintenance and sustainable as possible.

ACCESS CONTROL

If you are choosing to have a Cycle Hub with doors, Cyclepods offer several types of locks – from basic padlocks to full access control systems which work with many options such as key fobs, coded locks or key cards..

Our access technology systems are highly secure entry and exit controls which are easily adapted to suit any environment and location and can be easily retro-fitted to existing Hubs or linked to an existing ITSO-style travelcards such as The Key.



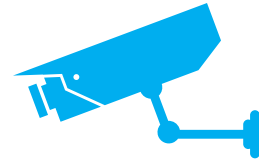
E-BIKE CHARGING UNITS

The trend in electric bike usage is increasing rapidly, so equipping your Cycle Hub with special points for electric bike parking is something to be considered.



CCTV

CCTV is an important security tool for any cycle parking facility. Having and advertising the presence of CCTV is also a great anti-theft deterrent.



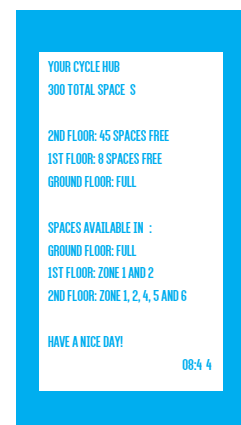
LIGHTING

Cyclepod's LED lighting systems ensure all areas of Cycle Hubs are well lit and inviting. These lights can be run off low-voltage electricity and triggered with PIR motion sensors to stay lit as long as movement within the hub is detected. This makes them energy-saving, long lasting and very low maintenance.



BIKE DETECTION

Bike Detection systems are a new concept to reach the UK but are already extremely popular in Cycle Hubs throughout Europe. Bike detection sensors can be installed into each space and linked to an LED screen at the hub entrance showing how many spaces are available. You can even go a step further and introduce an LED 'path' to guide users to the available spaces, saving them from having to search all over the hub for a space!



KIT LOCKERS

Cyclists can need a lot of kit such as helmets, saddle bags, bike lights, extra clothes in case of weather changes, repair and maintenance kits etc. which they need to remove from their bike once it is stored in case of theft. Particularly if they are commuting, having to carry all these things with them all day as well as a change of clothes, laptops, handbags etc. isn't ideal. Kit lockers are an easy solution to this, they can keep their bike kits in the Hub safely all day whilst they continue their journey.



LOCK STANDS

Secure bike locks are heavy and cumbersome for cyclists to transport every day, especially difficult for commuters who already need to carry a lot on their journeys. Lock stands are for users to keep their locks in the cycle facility after they have retrieved their bike so they don't need to transport it back and forth. Dedicated lock stands prevent the bike storage stands from being cluttered or 'reserved' with locks.



CYCLE REPAIR AND MAINTENANCE

Cycle Repair Stands and Pumps keep your cyclists on the go by providing easy-to-use tools for basic bike repairs. The Cyclepods XL Pump is our most robust public pump, designed for heavy duty use day in, day out. The pump fits both Schrader and Presta valves which means all cyclists are accommodated for. The Fix It Repair Stand is designed for public use and includes tools to perform basic repairs from changing a flat tyre to adjusting brakes and derailleurs. The tools are securely attached to the stand with stainless steel cables and tamper-proof fasteners. Hanging the bike from the arms allows the pedals and wheels to spin freely whilst making adjustments.

